

nørdic

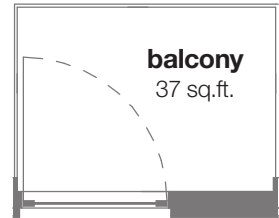
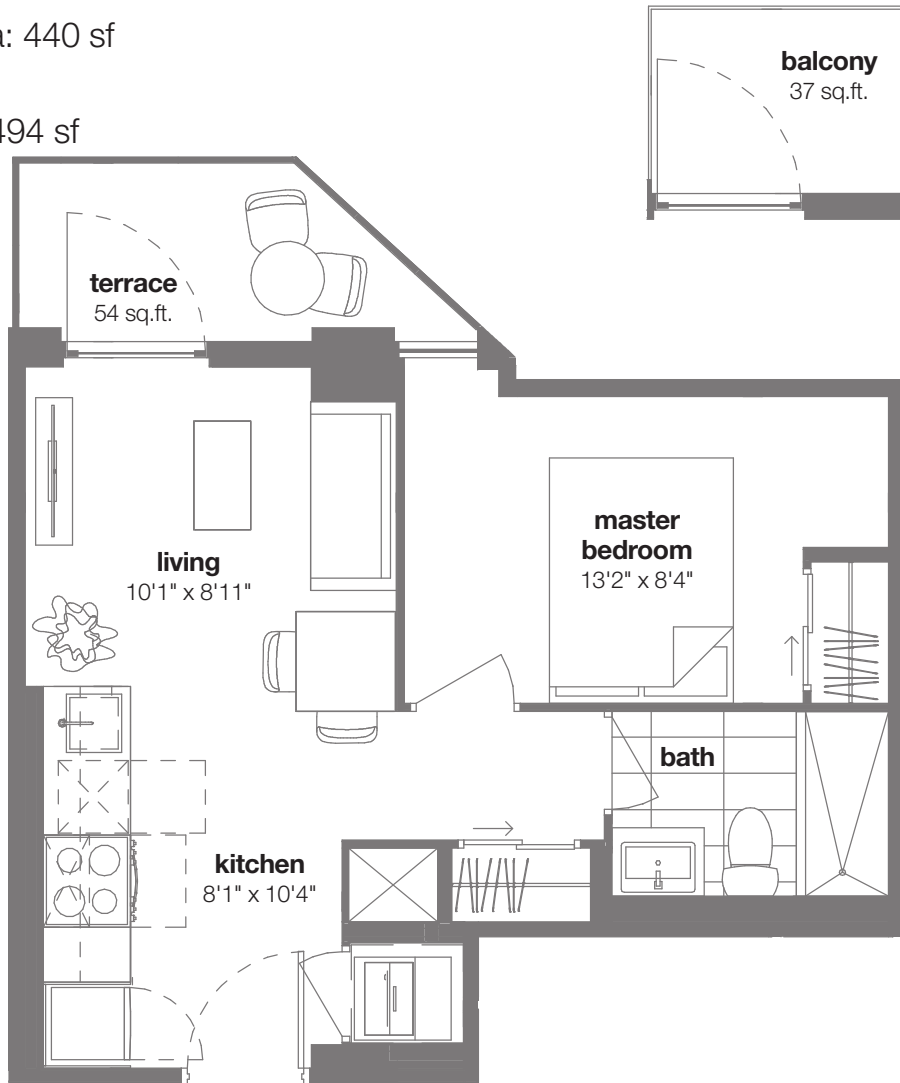
condos

1 bedroom - B3-A

interior living area: 440 sf

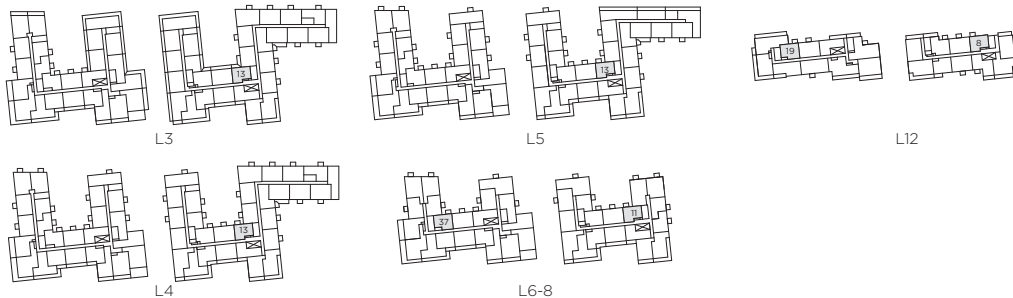
terrace: 54 sf

total living area: 494 sf



balcony
level 4-8, 12

terrace
level 3



Materials, specifications and floorplans are subject to change without notice. All renderings are artists' conception. All floorplans have approximate dimensions. Actual useable floor space may vary from the stated floor area. E. & O.E. Balcony depths vary depending on floor level locations.



nørdic

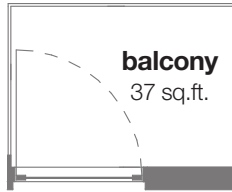
condos

1 bedroom - B7-A

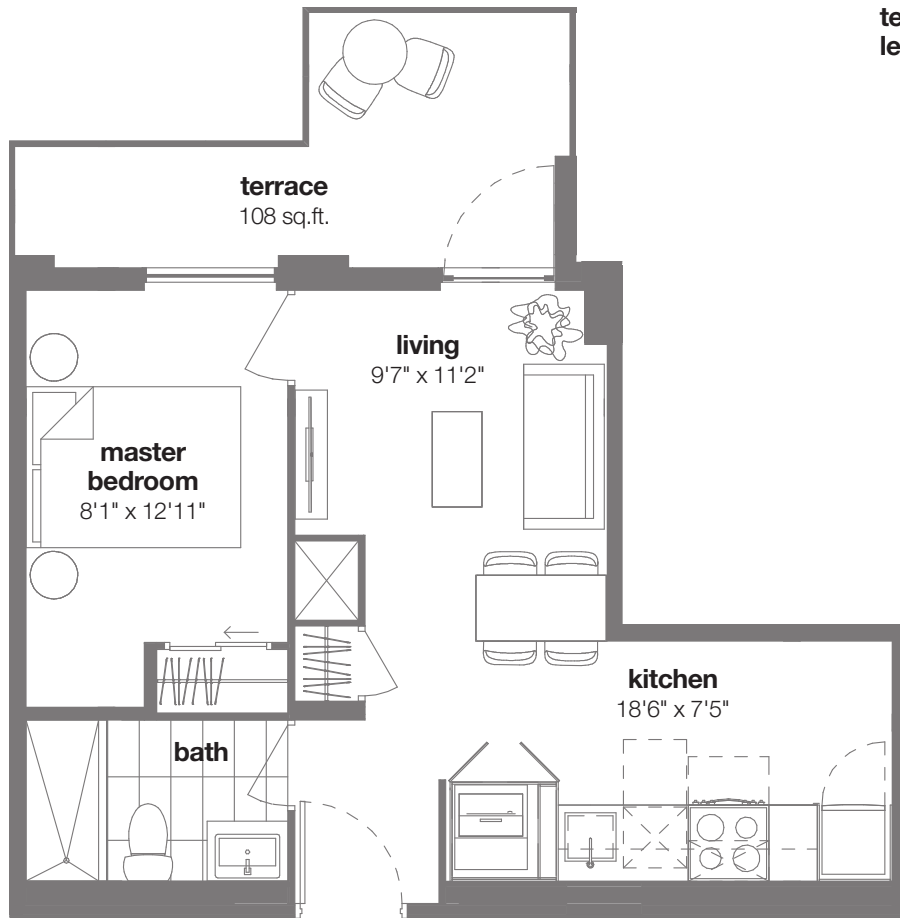
interior living area: 457 sf

terrace: 108 sf

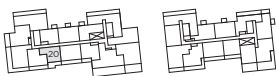
total living area: 565 sf



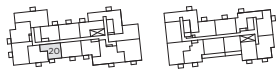
balcony
level 10-11



terrace
level 9



L9



L10-11



Materials, specifications and floorplans are subject to change without notice. All renderings are artists' conception. All floorplans have approximate dimensions. Actual useable floor space may vary from the stated floor area. E. & O.E. Balcony depths vary depending on floor level locations.



nørdic

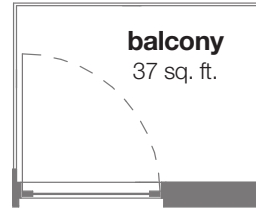
condos

1 bedroom + den - C5-A

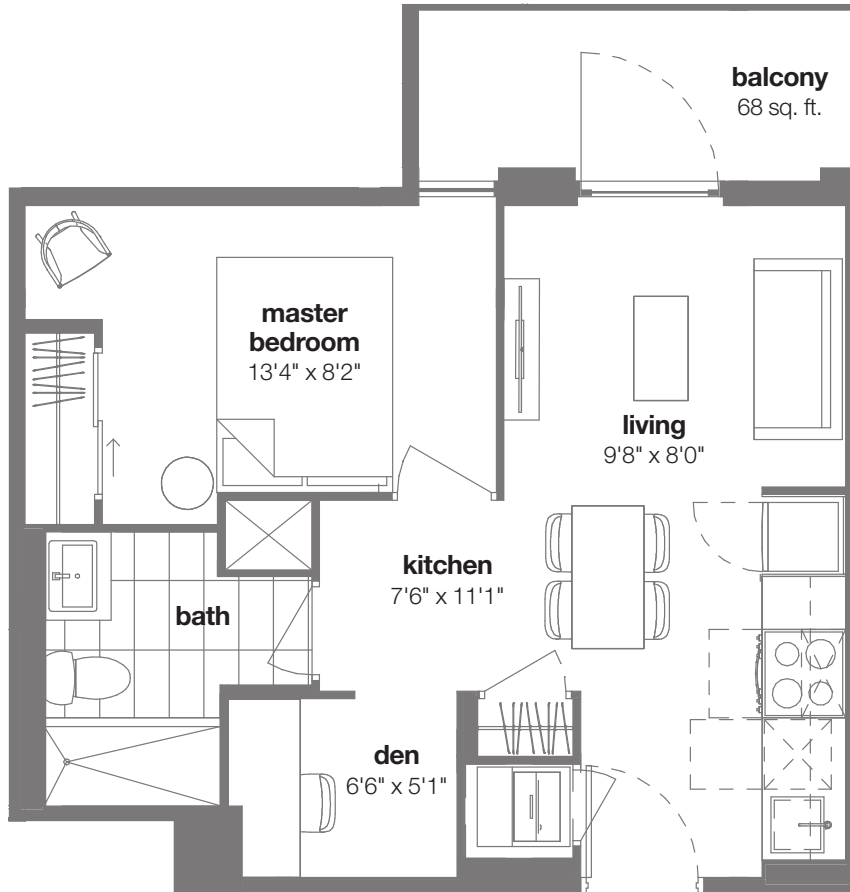
interior living area: 482 sf

balcony: 68 sf

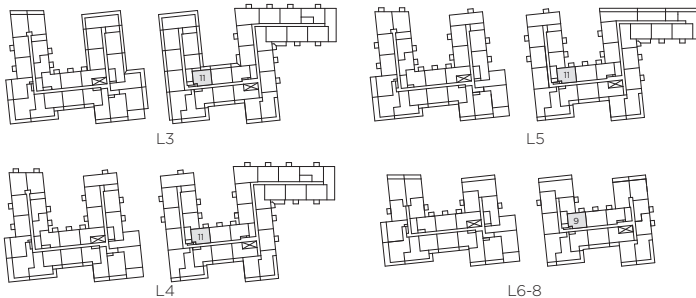
total living area: 550 sf



balcony level 4-8



balcony level 3



Materials, specifications and floorplans are subject to change without notice. All renderings are artists' conception. All floorplans have approximate dimensions. Actual useable floor space may vary from the stated floor area. E. & O.E. Balcony depths vary depending on floor level locations.



nørdic

condos

1 bedroom + den - C6-A

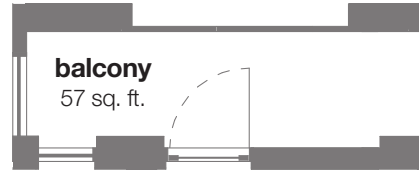
interior living area: 490 sf

balcony: 37 sf

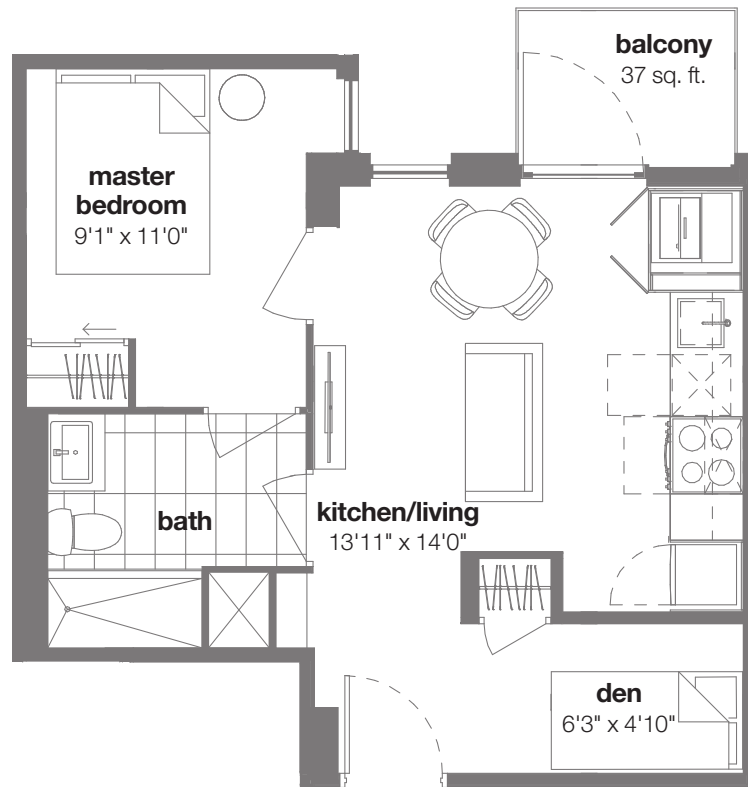
total living area: 527 sf



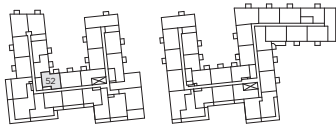
balcony level 9



balcony level 3-8



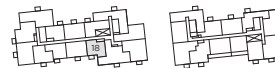
balcony level 3-5, 10-11



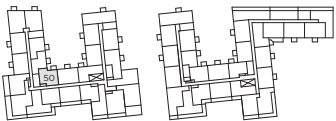
L3-4



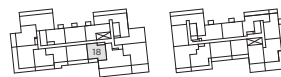
L6-8



L10-11



L5



L9



Materials, specifications and floorplans are subject to change without notice. All renderings are artists' conception. All floorplans have approximate dimensions. Actual useable floor space may vary from the stated floor area. E. & O.E. Balcony depths vary depending on floor level locations.



nørdic

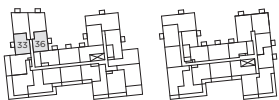
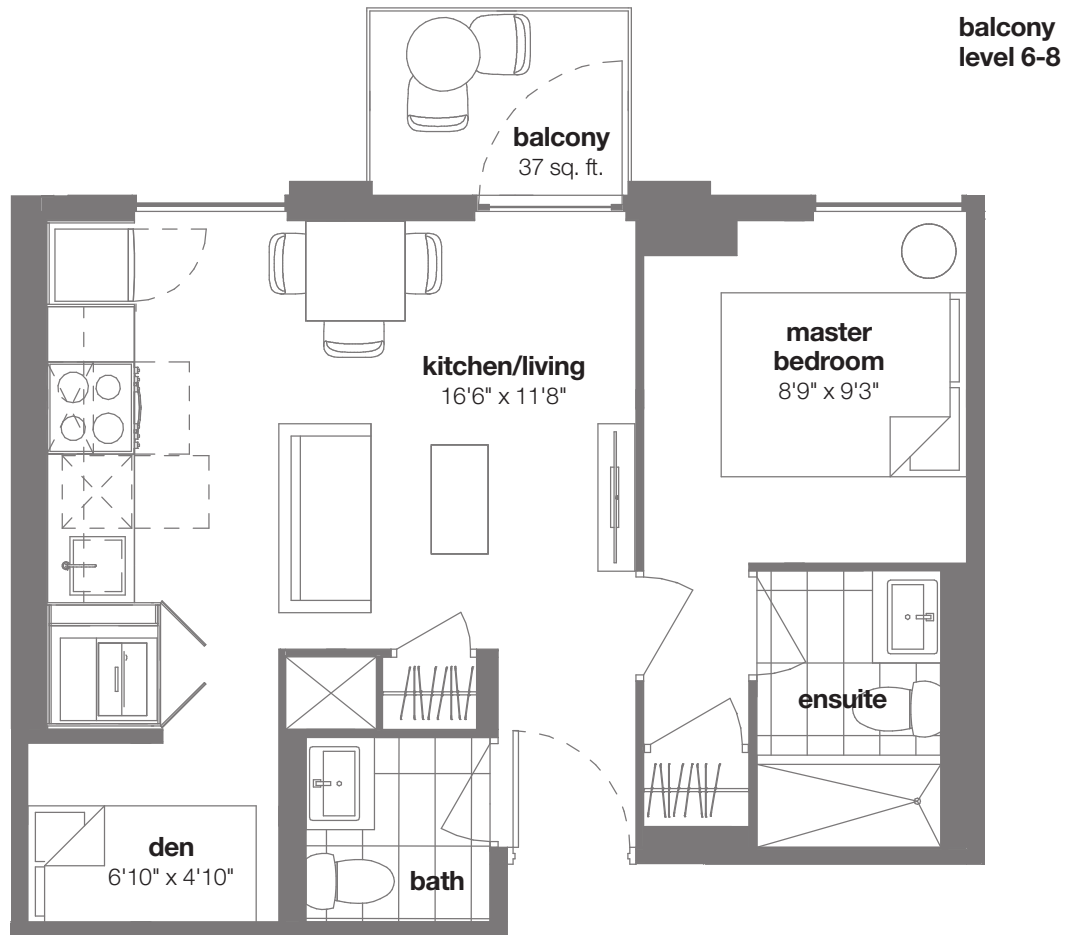
condos

1 bedroom + den - D1

interior living area: 501 sf

balcony: 37 sf

total living area: 538 sf



L6-8



Materials, specifications and floorplans are subject to change without notice. All renderings are artists' conception. All floorplans have approximate dimensions. Actual useable floor space may vary from the stated floor area. E. & O.E. Balcony depths vary depending on floor level locations.

nørdic

condos

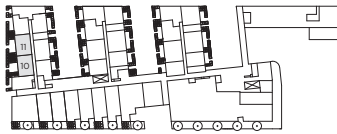
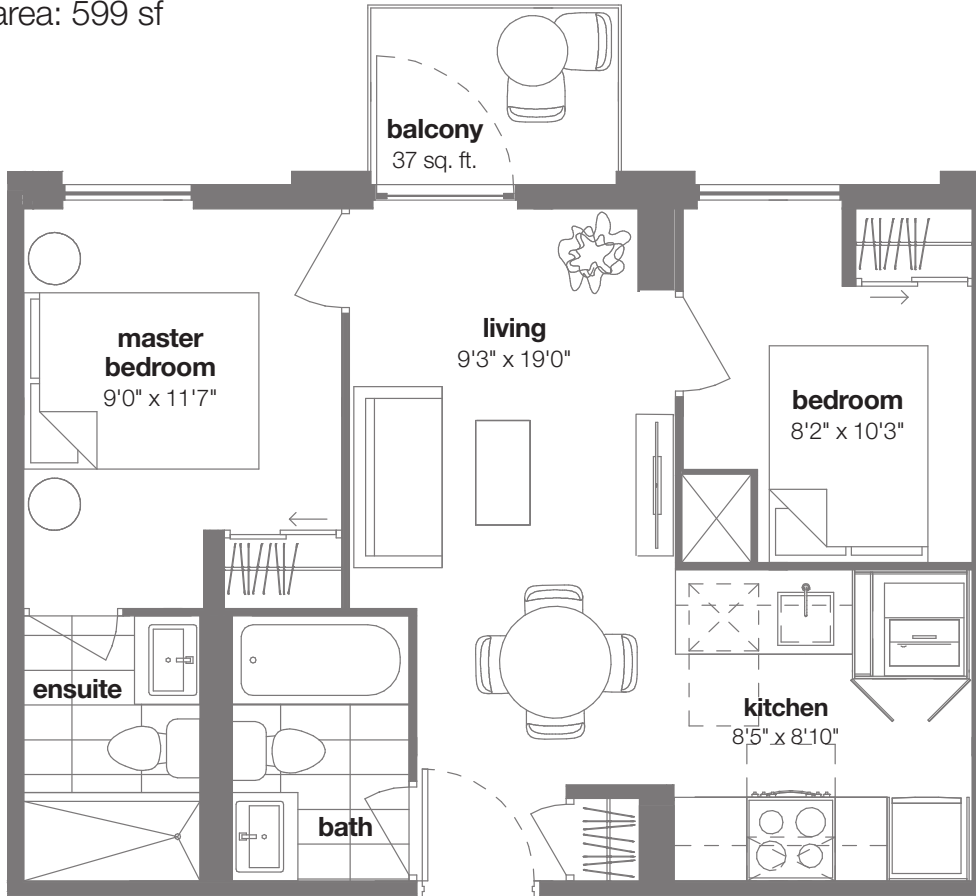
2 bedroom - E1-D

interior living area: 562 sf

balcony: 37 sf

total living area: 599 sf

balcony
level 2-12



L1



L3



L5



L9



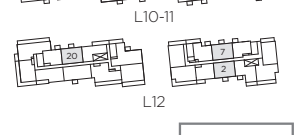
L2



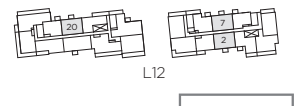
L4



L6-8



L10-11



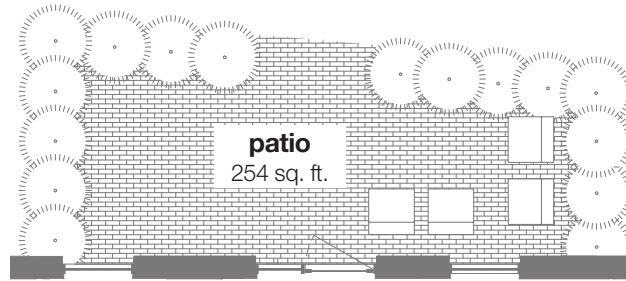
L12



Materials, specifications and floorplans are subject to change without notice. All renderings are artists' conception. All floorplans have approximate dimensions. Actual useable floor space may vary from the stated floor area. E. & O.E. Balcony depths vary depending on floor level locations.



2 bedroom - E1-D - balcony/terrace/patio types



patio
level 1



balcony
90 sq. ft.

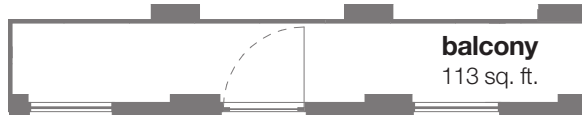
balcony
level 3-5

juliet balcony
level 2-11



terrace
108 sq. ft.

terrace
level 3



balcony
113 sq. ft.

balcony
level 3-9



balcony
113 sq. ft.

balcony
level 9, west building



balcony
137 sq. ft.

balcony
level 10



balcony
137 sq. ft.

balcony
level 11

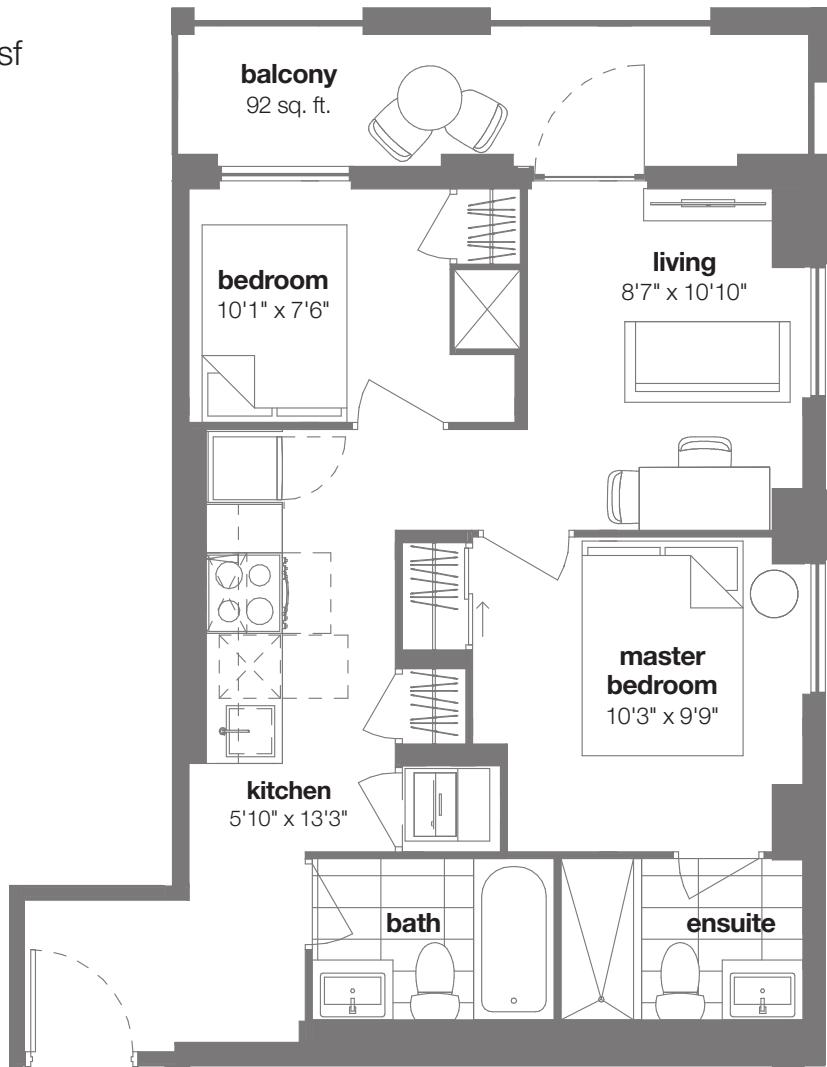


2 bedroom - E8-A

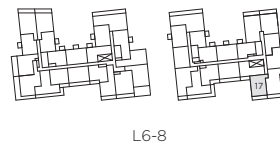
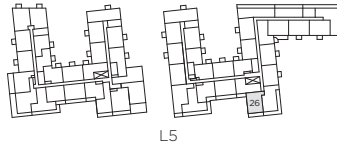
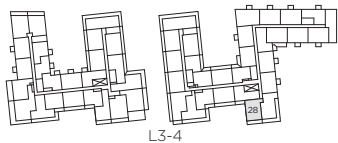
interior living area: 582 sf

balcony: 92 sf

total living area: 674 sf



balcony
level 3-8



nørdic

condos

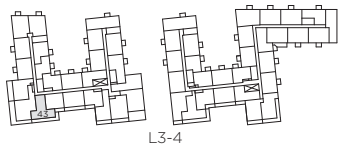
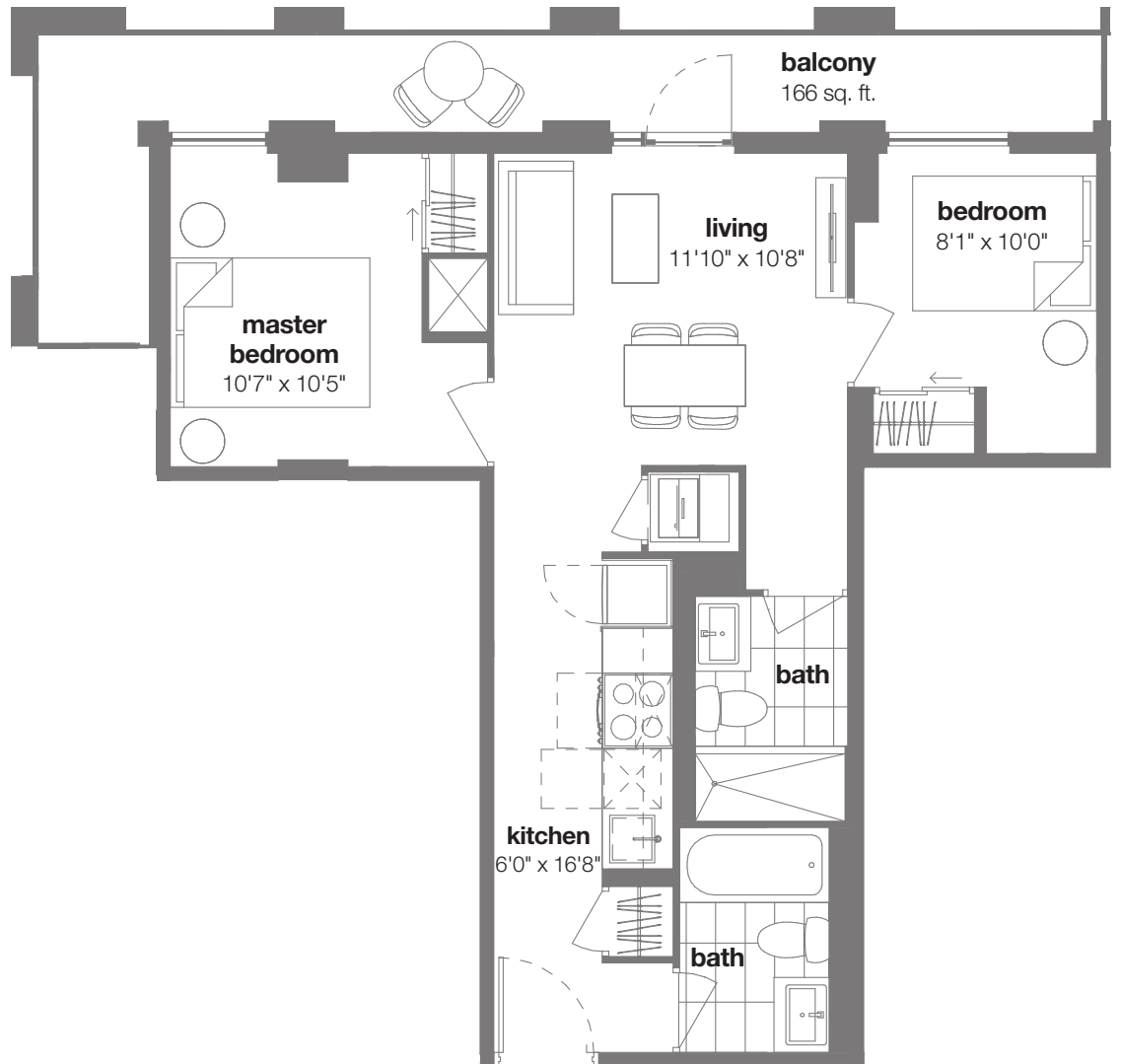
2 bedroom - E11-A

interior living area: 610 sf

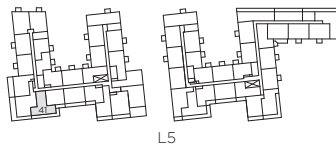
balcony terrace: 166 sf

total living area: 776 sf

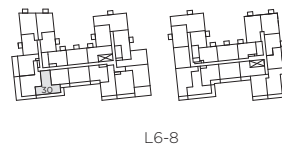
balcony
level 3-8



L3-4



L5



L6-8



Materials, specifications and floorplans are subject to change without notice. All renderings are artists' conception. All floorplans have approximate dimensions. Actual useable floor space may vary from the stated floor area. E. & O.E. Balcony depths vary depending on floor level locations.



nørdic

condos

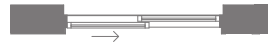
2 bedroom - E12-A

interior living area: 615 sf

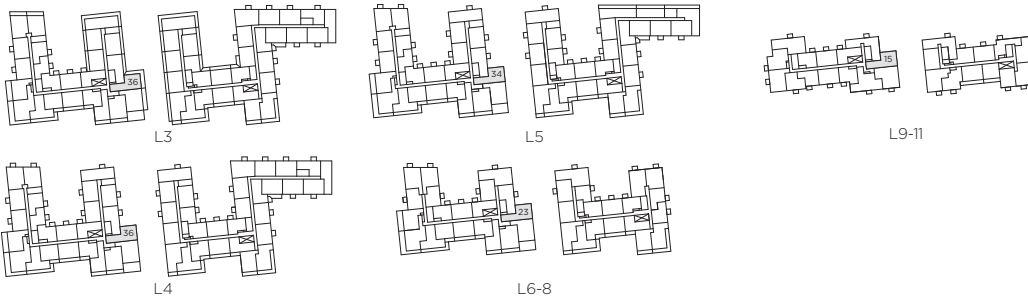
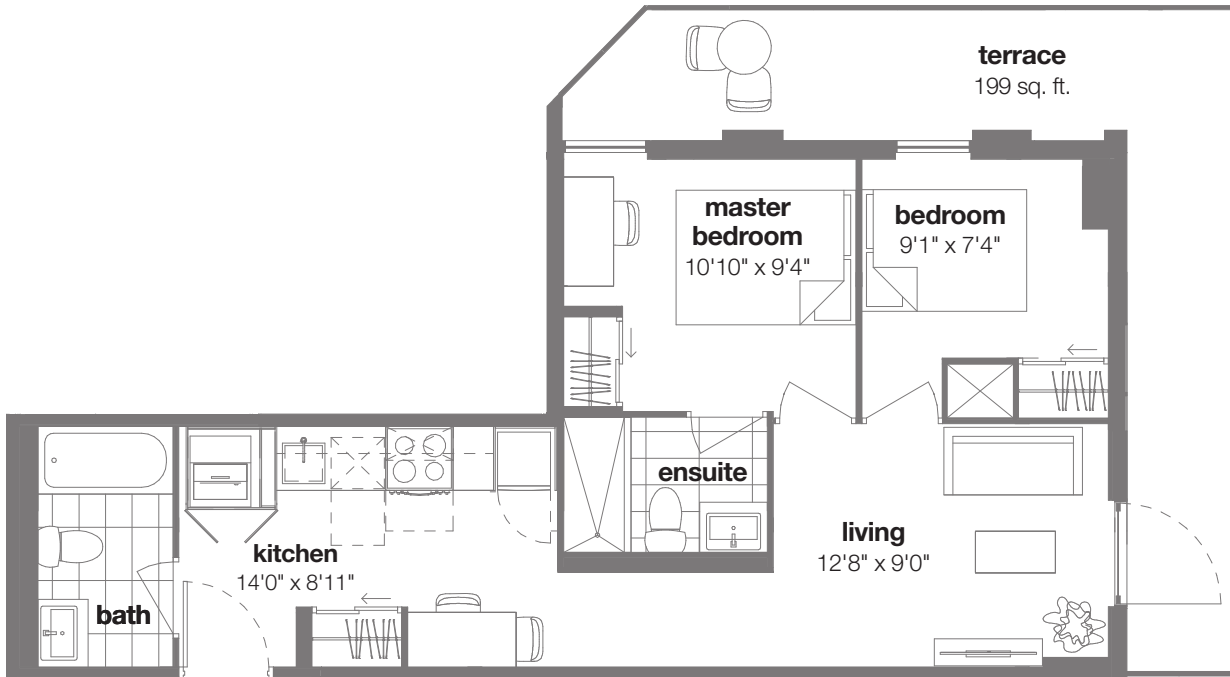
terrace: 199 sf

total living area: 814 sf

juliet balcony
level 4-11



terrace
level 3



Materials, specifications and floorplans are subject to change without notice. All renderings are artists' conception. All floorplans have approximate dimensions. Actual useable floor space may vary from the stated floor area. E. & O.E. Balcony depths vary depending on floor level locations.



nørdic

condos

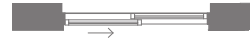
2 bedroom + den - F3

interior living area: 680 sf

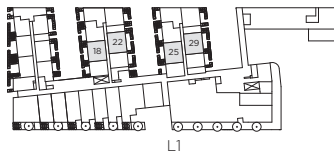
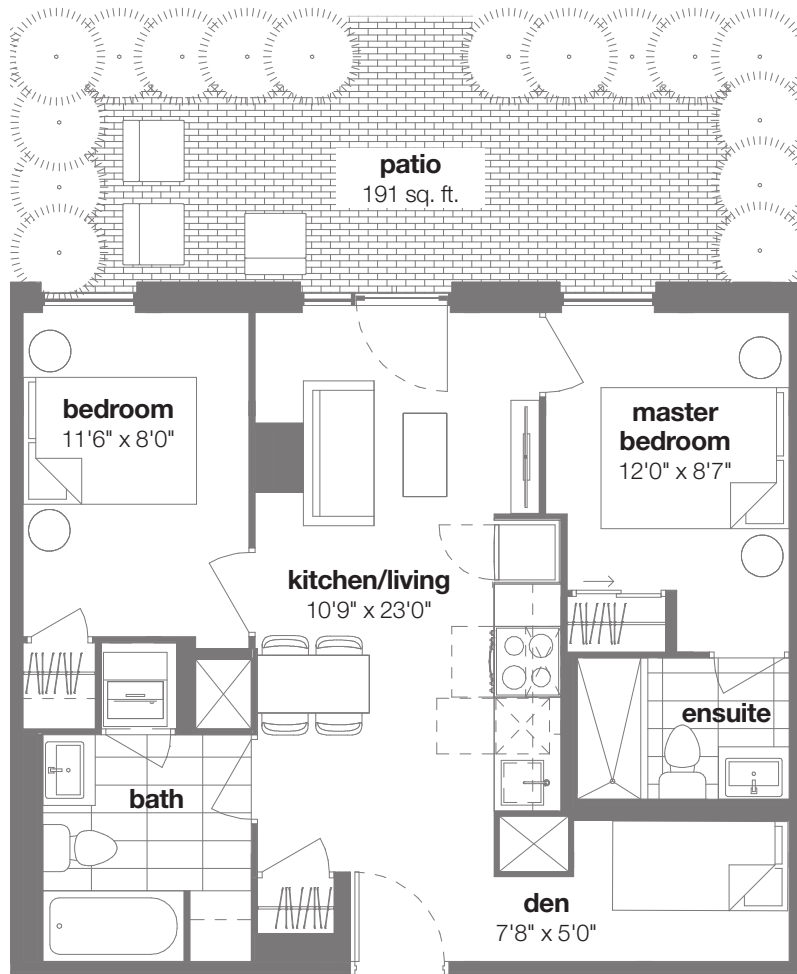
patio: 191 sf

total living area: 871 sf

juliet balcony
level 2



patio
level 1



Materials, specifications and floorplans are subject to change without notice. All renderings are artists' conception. All floorplans have approximate dimensions. Actual useable floor space may vary from the stated floor area. E. & O.E. Balcony depths vary depending on floor level locations.

nørdic

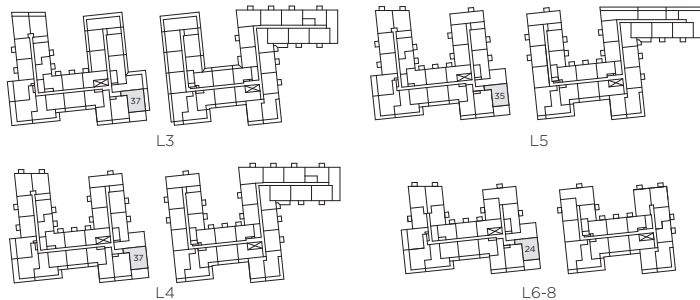
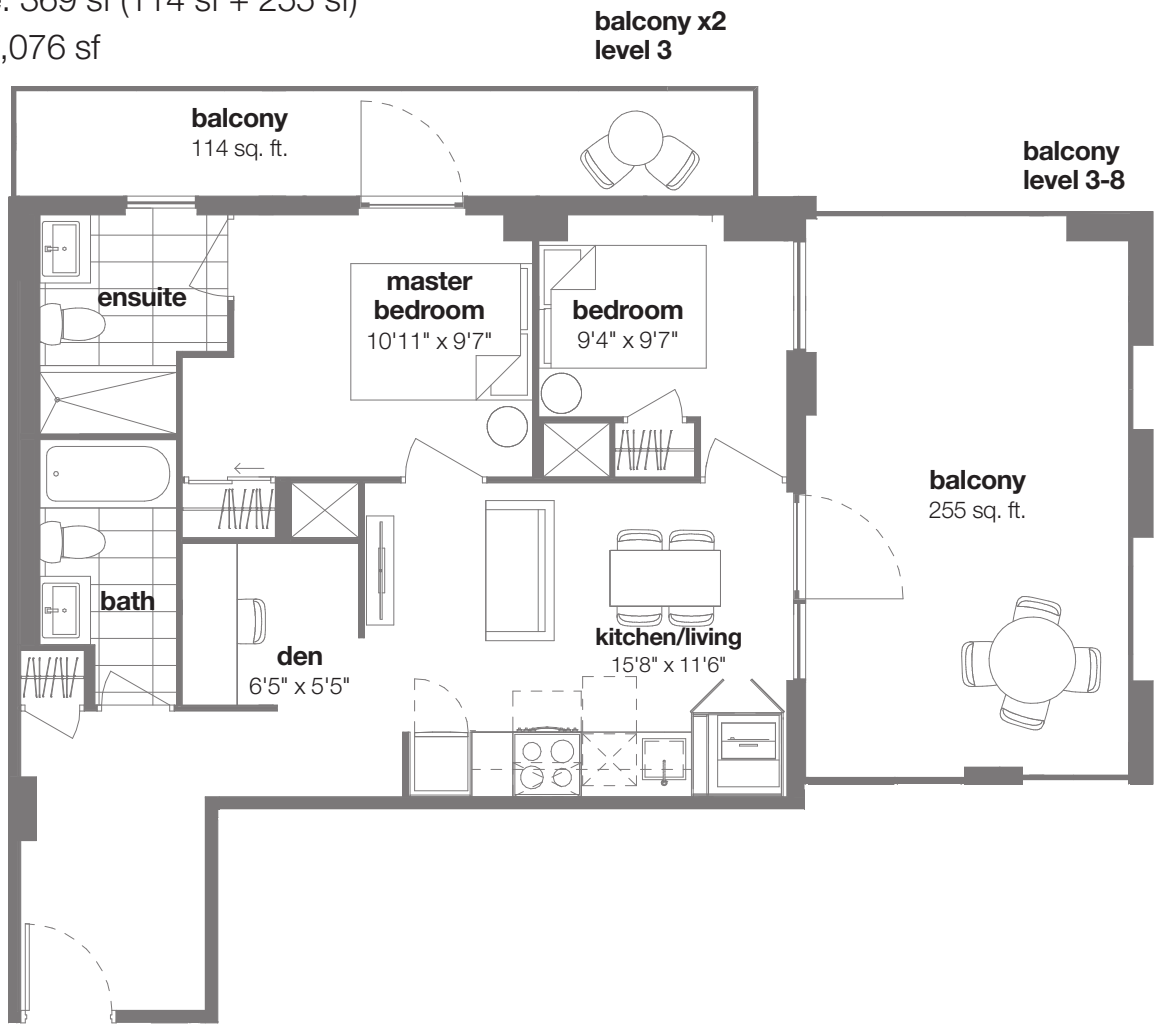
condos

2 bedroom + den - F6-B

interior living area: 707 sf

balcony + terrace: 369 sf (114 sf + 255 sf)

total living area: 1,076 sf



Materials, specifications and floorplans are subject to change without notice. All renderings are artists' conception. All floorplans have approximate dimensions. Actual useable floor space may vary from the stated floor area. E. & O.E. Balcony depths vary depending on floor level locations.



nørdic

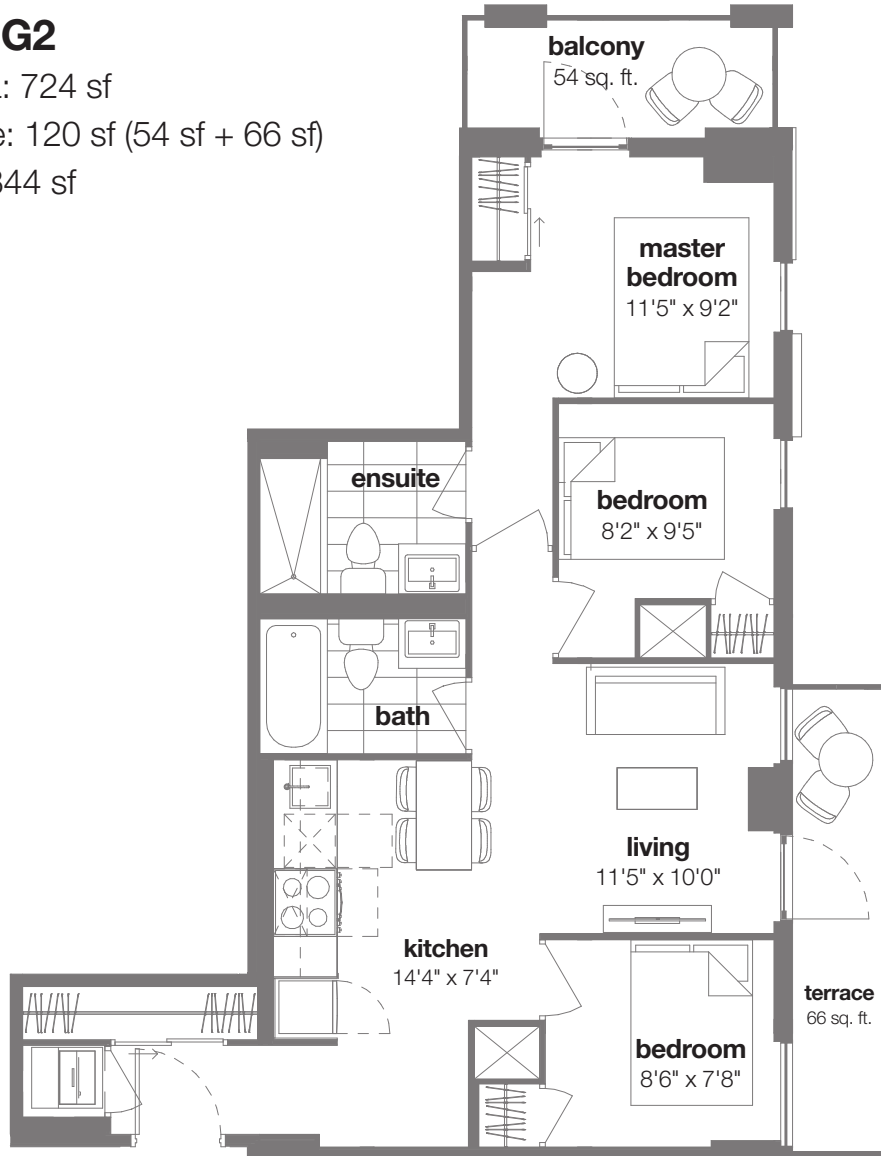
condos

3 bedroom - G2

interior living area: 724 sf

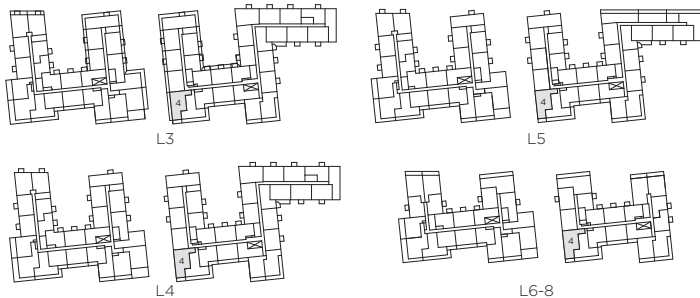
balcony + terrace: 120 sf (54 sf + 66 sf)

total living area: 844 sf



balcony
level 4-8

terrace + balcony
level 3



Materials, specifications and floorplans are subject to change without notice. All renderings are artists' conception. All floorplans have approximate dimensions. Actual useable floor space may vary from the stated floor area. E. & O.E. Balcony depths vary depending on floor level locations.



nørdic

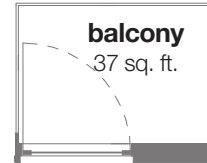
condos

3 bedroom - G8-A

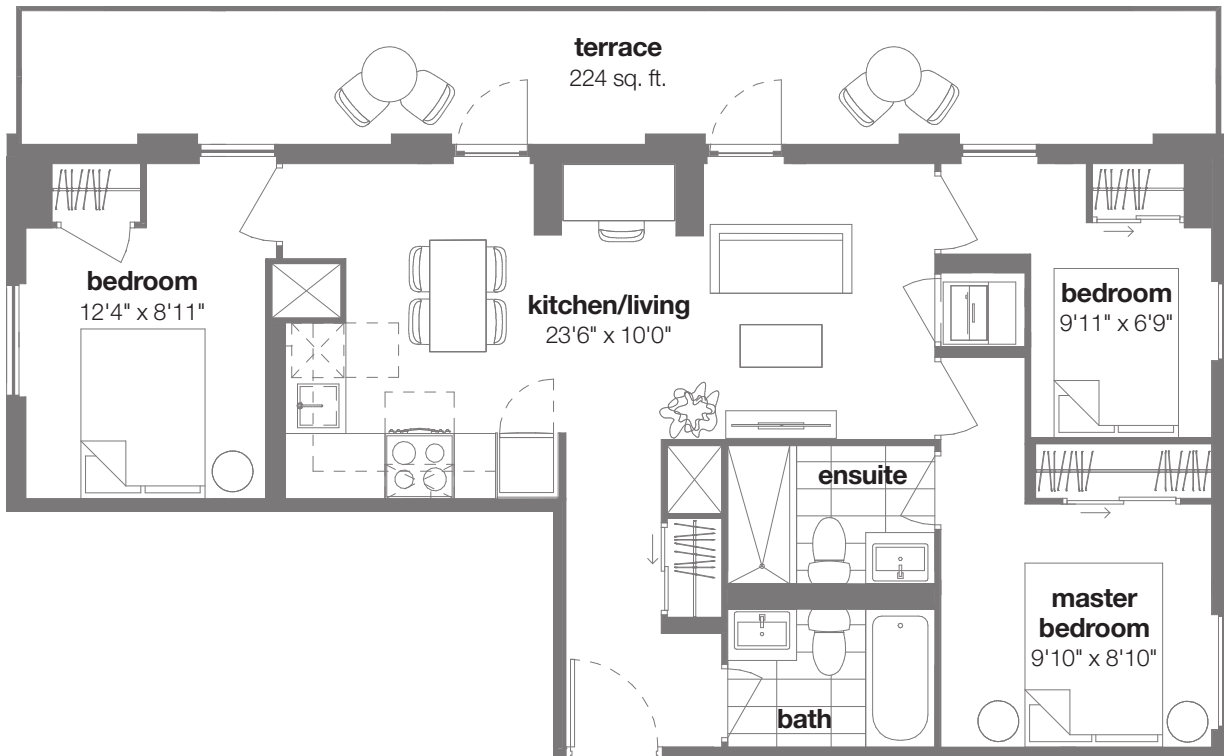
interior living area: 807 sf

terrace: 224 sf

total living area: 1,031 sf



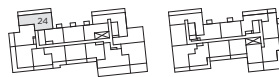
balcony
37 sq. ft.
level 7-8
10-11



terrace
level 6,9



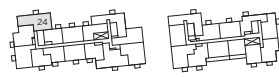
L6



L9



L7-8



L10-11



Materials, specifications and floorplans are subject to change without notice. All renderings are artists' conception. All floorplans have approximate dimensions. Actual useable floor space may vary from the stated floor area. E. & O.E. Balcony depths vary depending on floor level locations.

