

nørdic

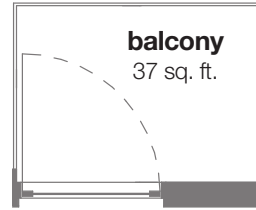
condos

1 bedroom + den - C5-A

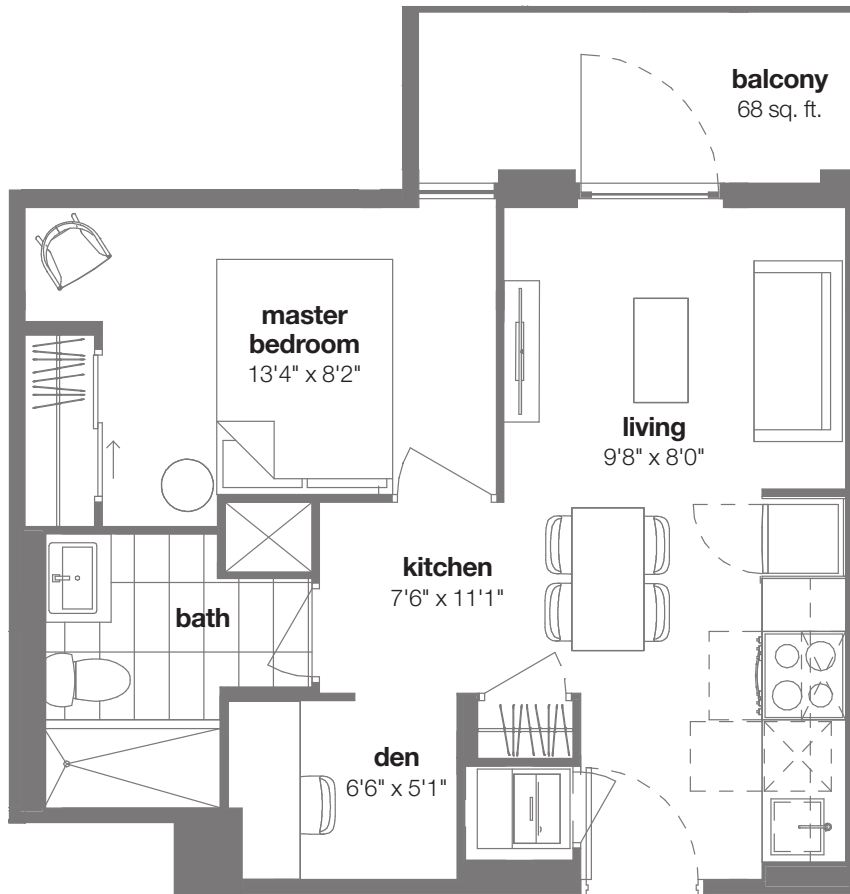
interior living area: 482 sf

balcony: 68 sf

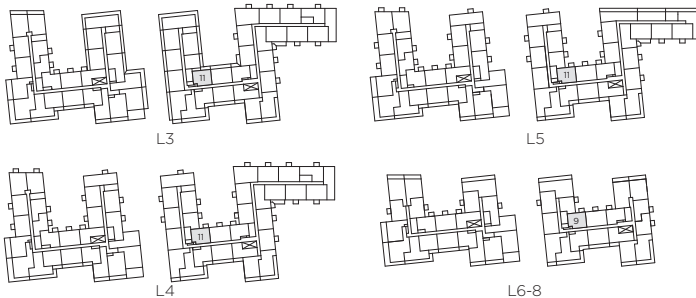
total living area: 550 sf



balcony
level 4-8



balcony
level 3



Materials, specifications and floorplans are subject to change without notice. All renderings are artists' conception. All floorplans have approximate dimensions. Actual useable floor space may vary from the stated floor area. E. & O.E. Balcony depths vary depending on floor level locations.



nørdic

condos

1 bedroom + den - C6-A

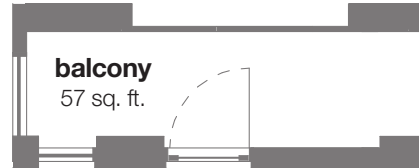
interior living area: 490 sf

balcony: 37 sf

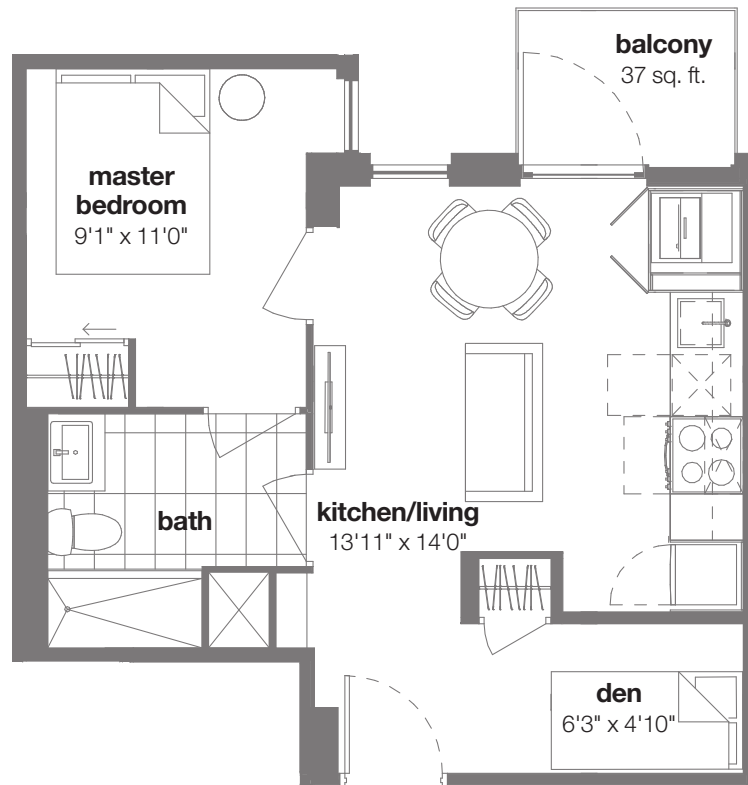
total living area: 527 sf



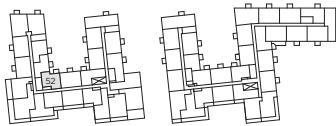
balcony
level 9



balcony
level 3-8



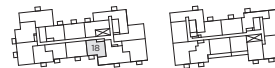
balcony
level 3-5, 10-11



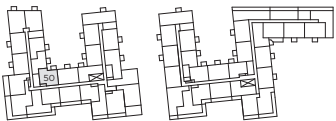
L3-4



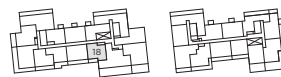
L6-8



L10-11



L5



L9



Materials, specifications and floorplans are subject to change without notice. All renderings are artists' conception. All floorplans have approximate dimensions. Actual useable floor space may vary from the stated floor area. E. & O.E. Balcony depths vary depending on floor level locations.



nørdic

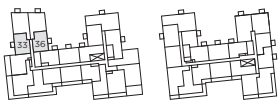
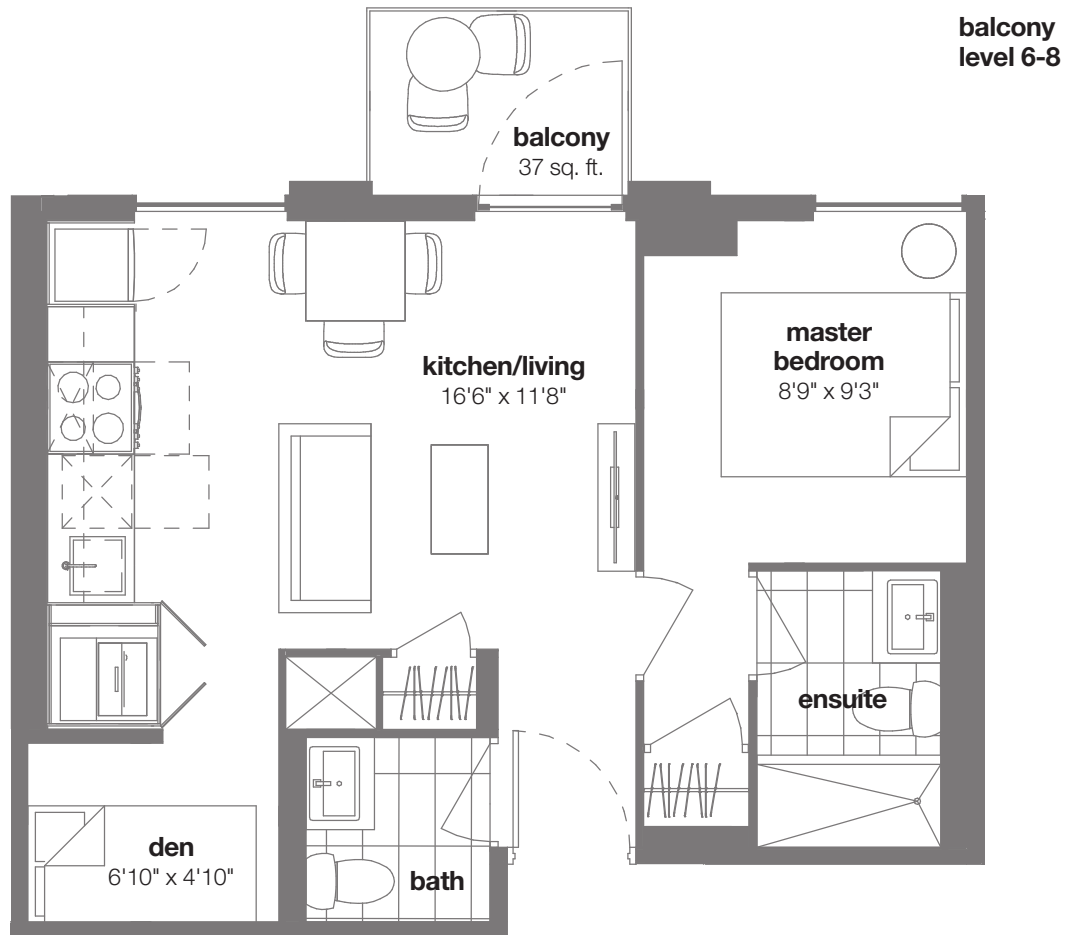
condos

1 bedroom + den - D1

interior living area: 501 sf

balcony: 37 sf

total living area: 538 sf



L6-8



Materials, specifications and floorplans are subject to change without notice. All renderings are artists' conception. All floorplans have approximate dimensions. Actual useable floor space may vary from the stated floor area. E. & O.E. Balcony depths vary depending on floor level locations.