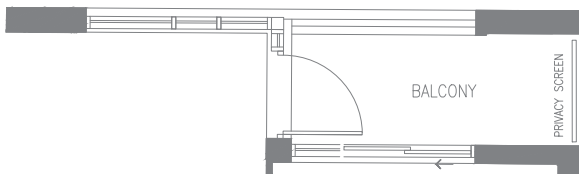
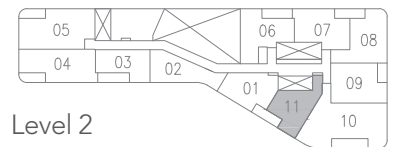


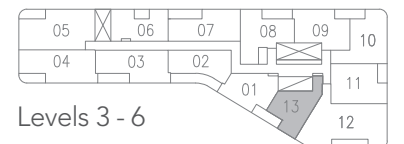
UNIT 211



UNITS 313, 513



Level 2



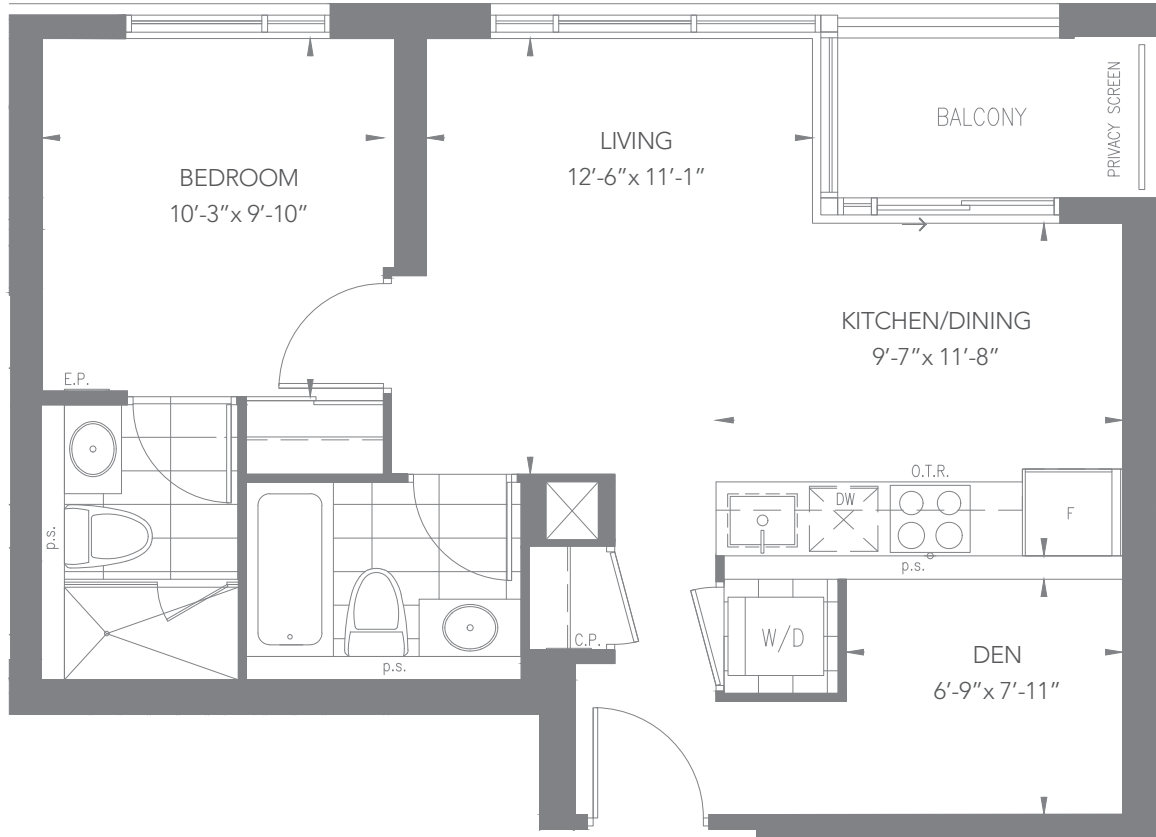
Levels 3 - 6



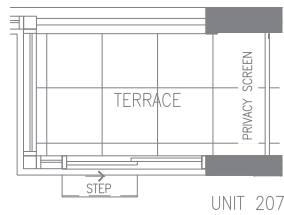


THE MACKENZIE
BOUTIQUE CONDOS IN MAPLE

1 BEDROOM + DEN – 1D-B
680 SQ.FT.



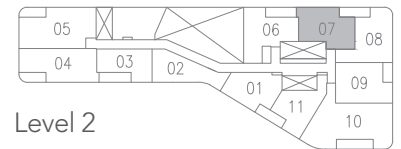
UNITS 409, 609



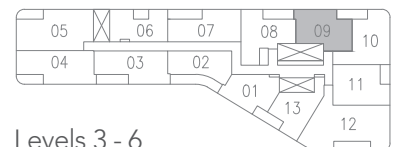
UNIT 207



UNITS 309, 509



Level 2

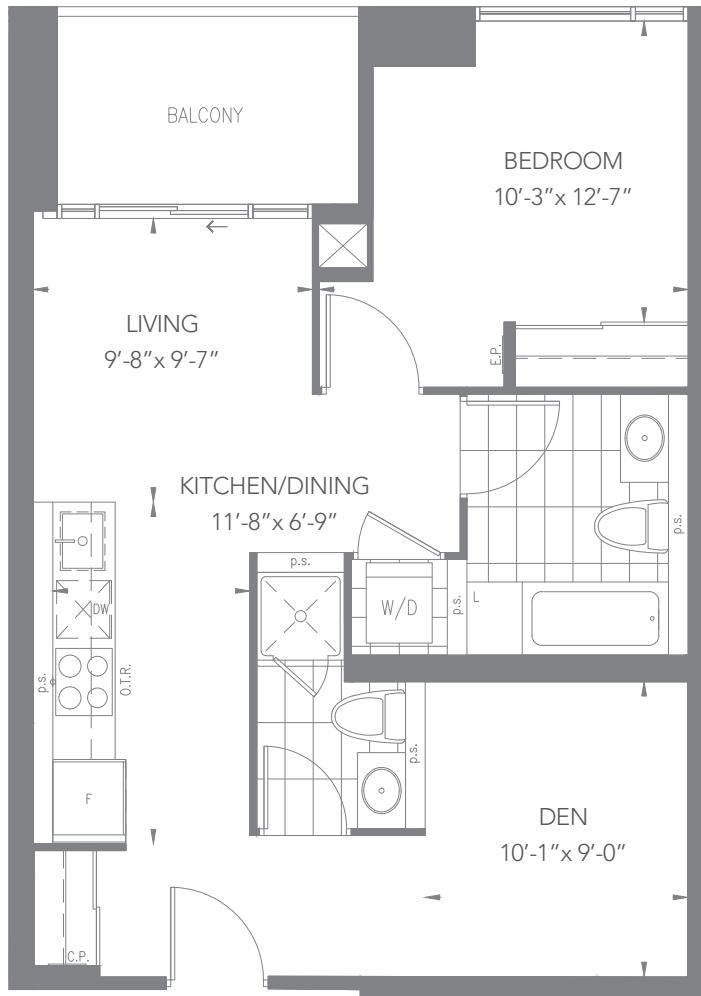


Levels 3 - 6

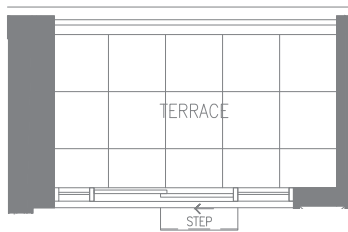
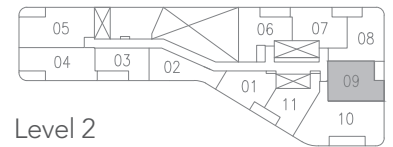


Pemberton
Everything a home should be

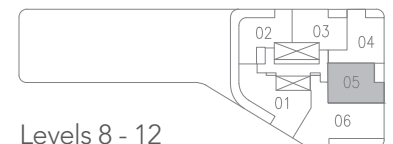
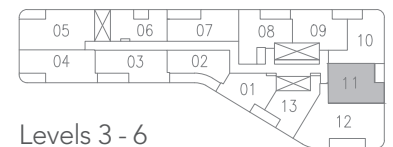
Dimensions, specifications, layouts and materials are approximate only and are subject to change without notice. Tile patterns may vary. Window size and location may vary. Actual usable floor space may vary from stated floor area. Balcony/terrace/patio area is approximate and not included in net suite area.

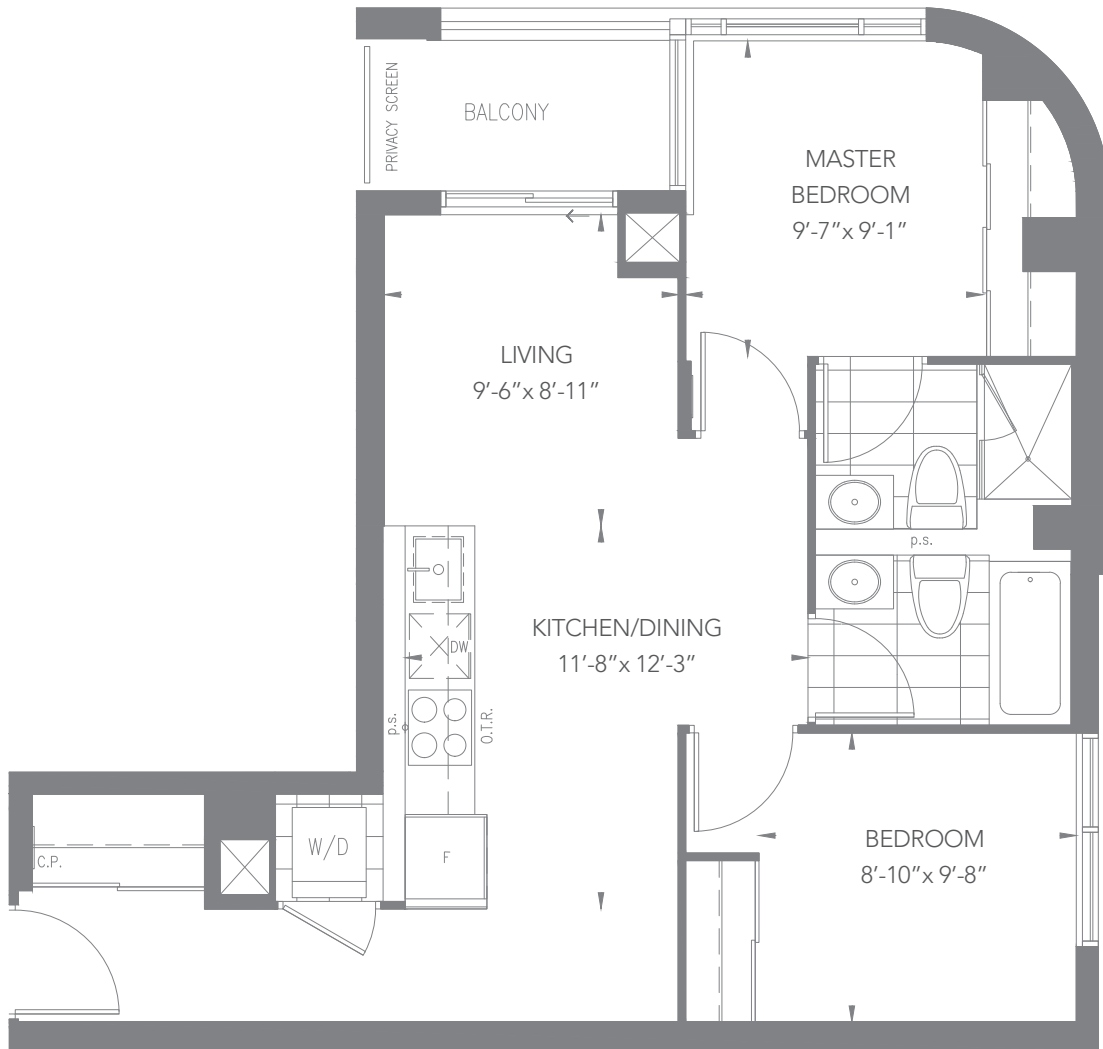


UNITS 311, 411, 511, 611, 905, 1005, 1105, 1205

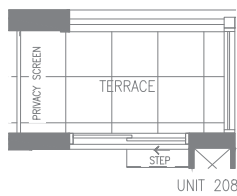


UNIT 209, 805





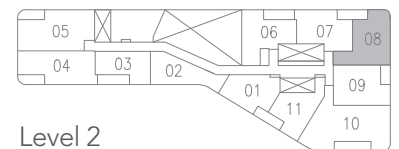
UNITS 410, 610



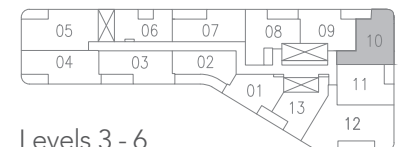
UNIT 208



UNITS 310, 510

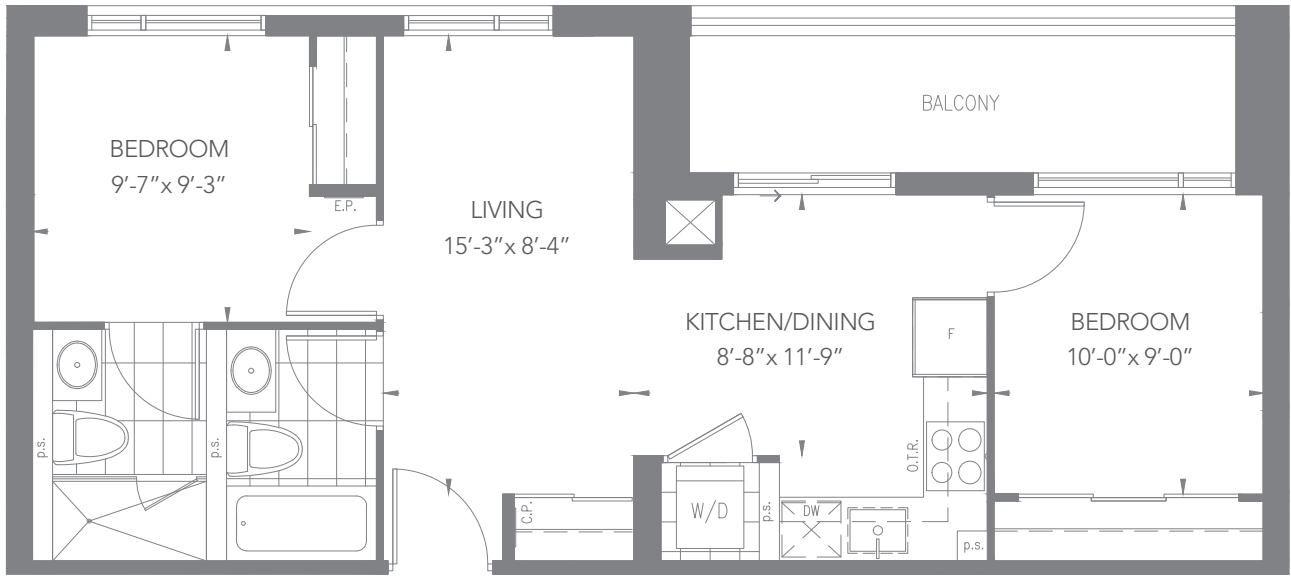


Level 2



Levels 3 - 6

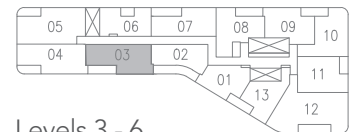




UNITS 403, 603



UNITS 303, 503



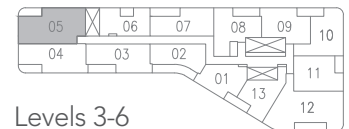
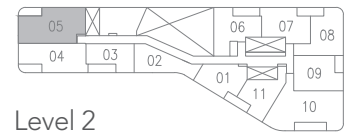
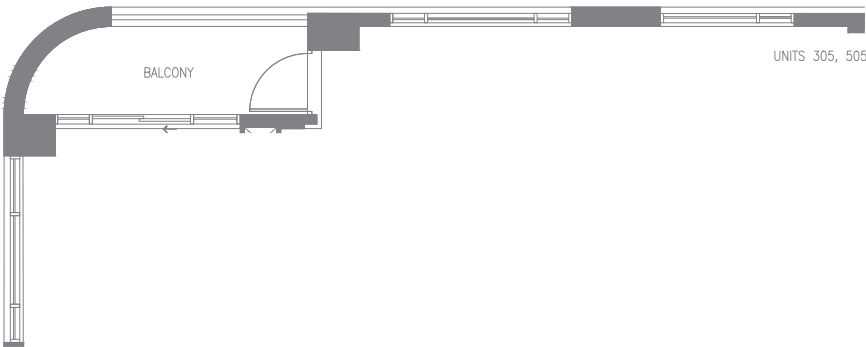
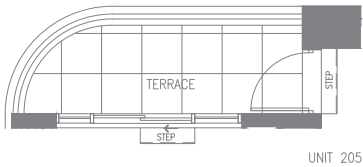
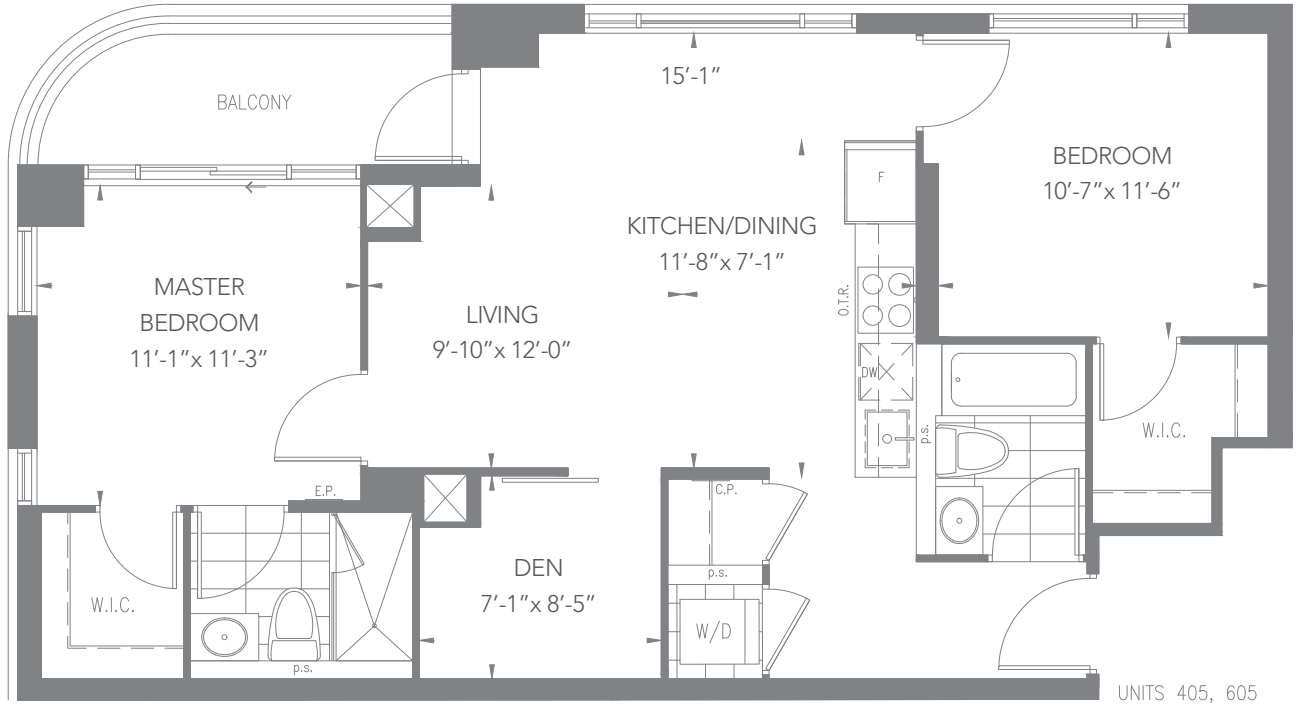
Levels 3 - 6





THE MACKENZIE
BOUTIQUE CONDOS IN MAPLE

2 BEDROOMS + DEN – 2D-D
955 SQ.FT.



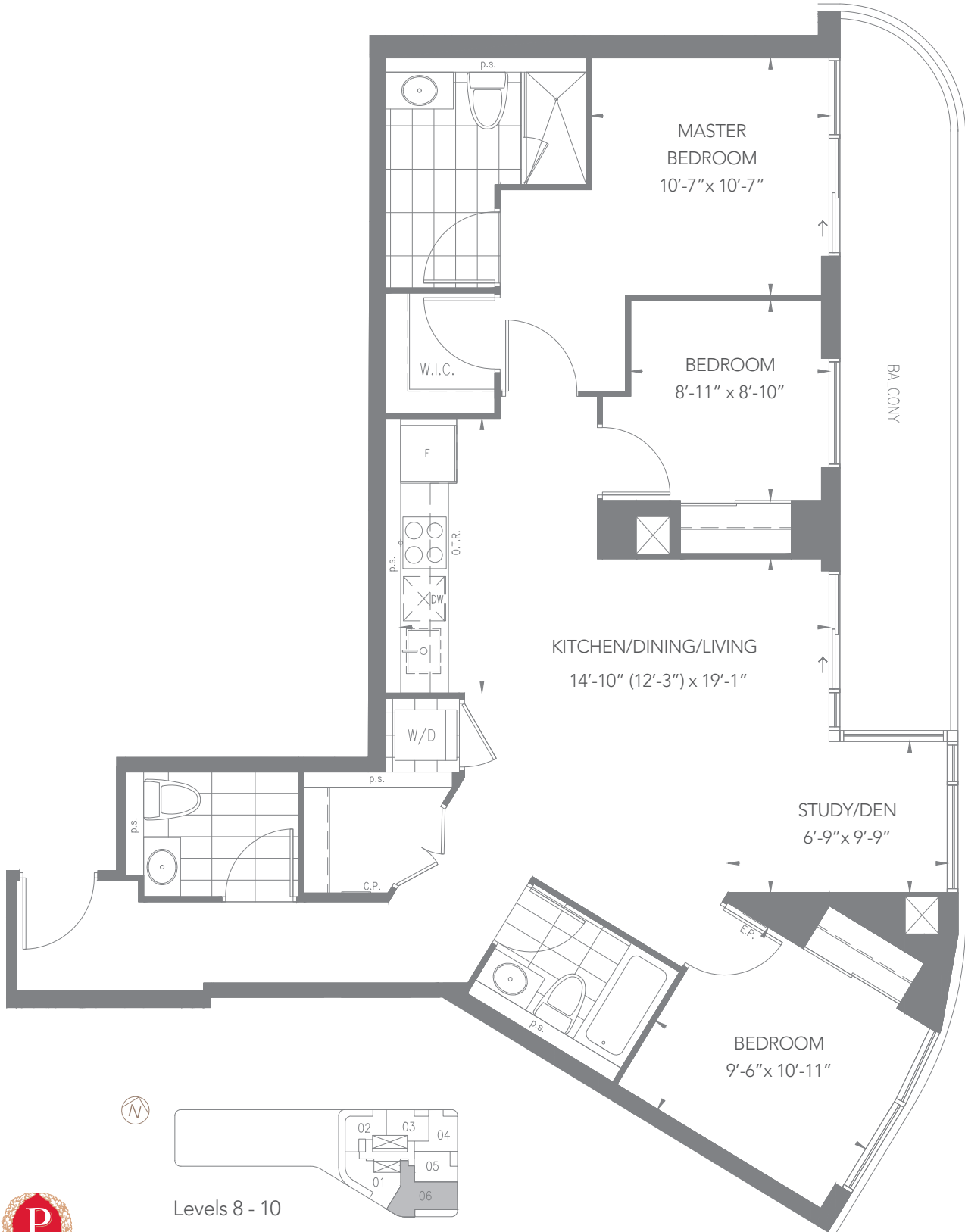
Pemberton
Everything a home should be

Dimensions, specifications, layouts and materials are approximate only and are subject to change without notice. Tile patterns may vary. Window size and location may vary. Actual usable floor space may vary from stated floor area. Balcony/terrace/patio area is approximate and not included in net suite area.



THE MACKENZIE
BOUTIQUE CONDOS IN MAPLE

3 BEDROOMS + DEN – 3D-B (BF)
1,250 SQ.FT.



Pemberton
Everything a home should be

Dimensions, specifications, layouts and materials are approximate only and are subject to change without notice. Tile patterns may vary. Window size and location may vary. Actual usable floor space may vary from stated floor area. Balcony/terrace/patio area is approximate and not included in net suite area.