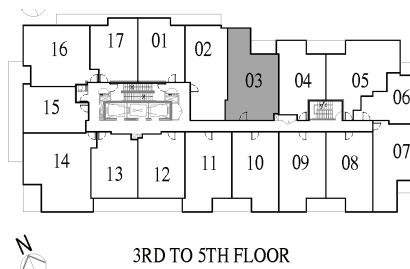
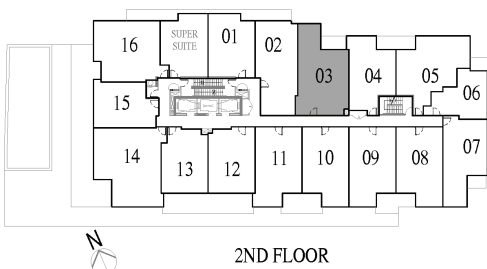
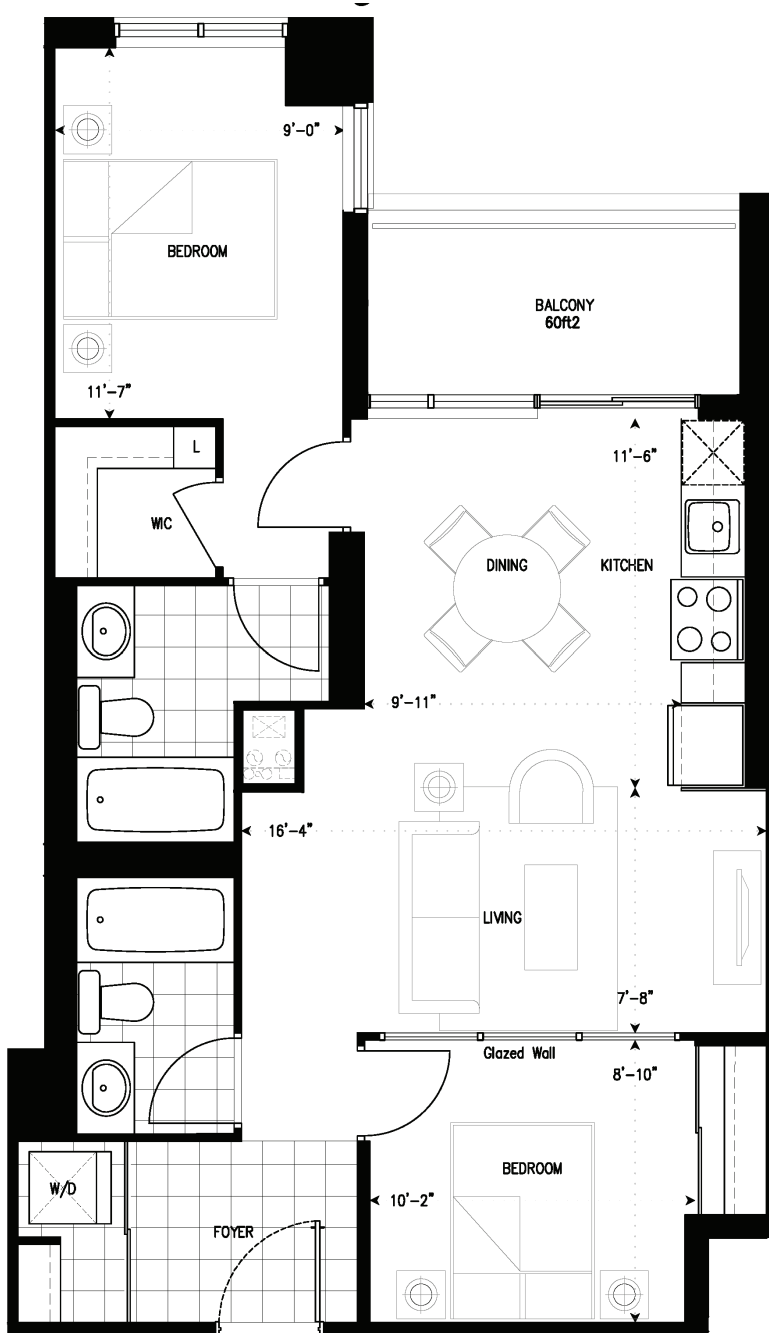


21

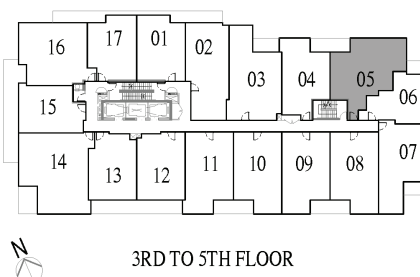
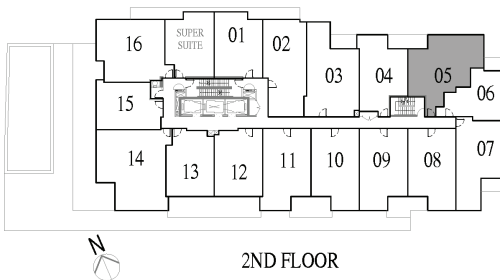
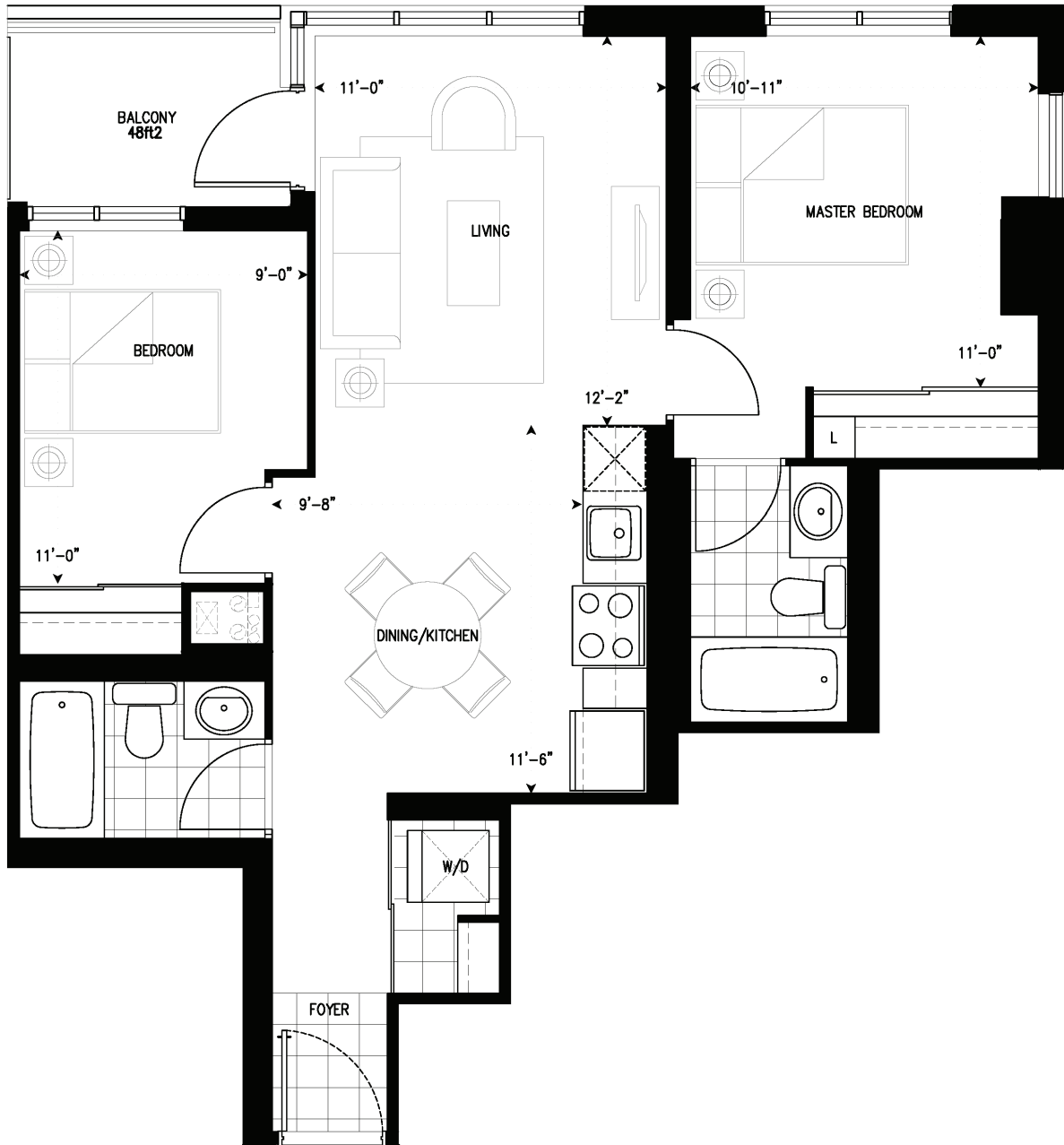
799 Sq. Ft.
Two Bedroom
Units 203, 303, 403, 503



Dimensions, specifications, flooring finish pattern and architectural detailing (including window size and location) are approximate and are subject to modification without notice. Orientation of the suite may be reversed and the purchaser agrees to accept same. Actual usable floor space may vary from the stated floor area. Ceiling height is approximate and is measured from the top surface of the floor slab to the under surface of the concrete ceiling slab, before finishes. Where ceiling bulkheads are installed, the ceiling height will be less than the stated ceiling height for that floor, and where drop ceilings are required, the ceiling height will also be less than that the stated ceiling height for that floor. E.&O.E.

2E

788 Sq. Ft.
Two Bedroom
Units 205, 305, 405, 505



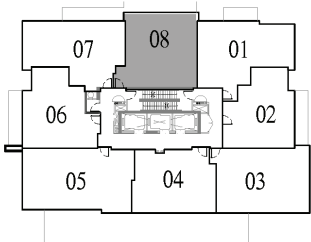
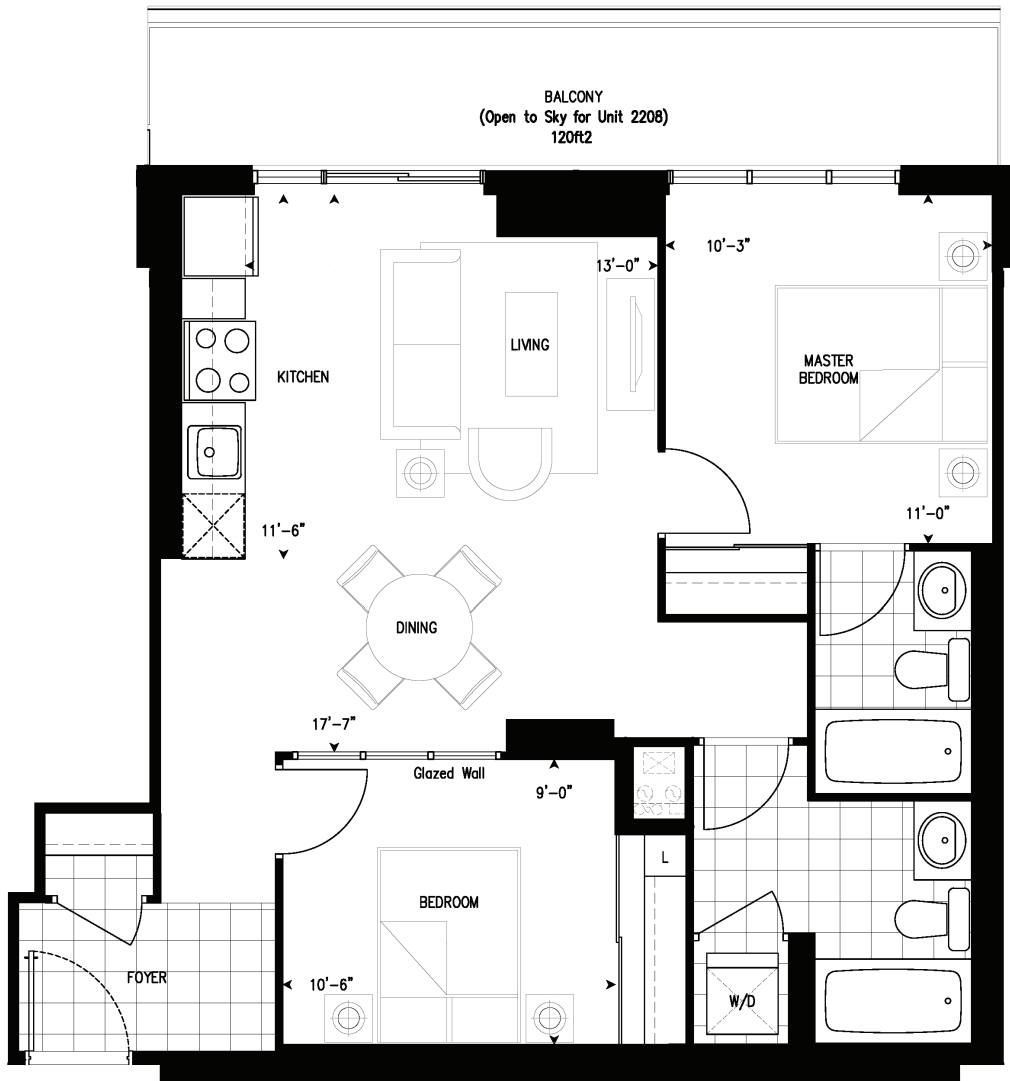
Dimensions, specifications, flooring finish pattern and architectural detailing (including window size and location) are approximate and are subject to modification without notice. Orientation of the suite may be reversed and the purchaser agrees to accept same. Actual usable floor space may vary from the stated floor area. Ceiling height is approximate and is measured from the top surface of the floor slab to the under surface of the concrete ceiling slab, before finishes. Where ceiling bulkheads are installed, the ceiling height will be less than the stated ceiling height for that floor, and where drop ceilings are required, the ceiling height will also be less than that the stated ceiling height for that floor. E.&O.E.

2F

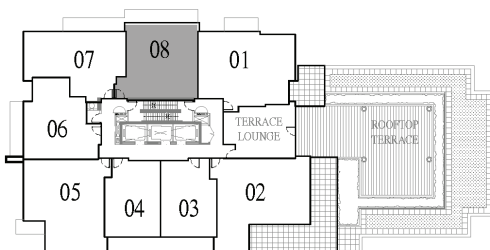
816 Sq. Ft.

Two Bedroom

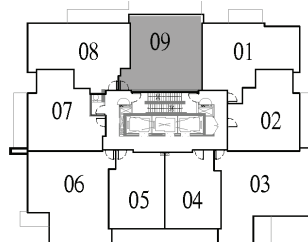
Units 708, 809, 909, 1009, 1109, 1209, 1309, 1409,
1509, 1609, 1709, 1809, 1909, 2009, 2109, 2208



22ND FLOOR



7TH FLOOR



TYPICAL FLOOR
8TH -21ST

Dimensions, specifications, flooring finish pattern and architectural detailing (including window size and location) are approximate and are subject to modification without notice. Orientation of the suite may be reversed and the purchaser agrees to accept same. Actual usable floor space may vary from the stated floor area. Ceiling height is approximate and is measured from the top surface of the floor slab to the under surface of the concrete ceiling slab, before finishes. Where ceiling bulkheads are installed, the ceiling height will be less than the stated ceiling height for that floor, and where drop ceilings are required, the ceiling height will also be less than that the stated ceiling height for that floor. E.&O.E.