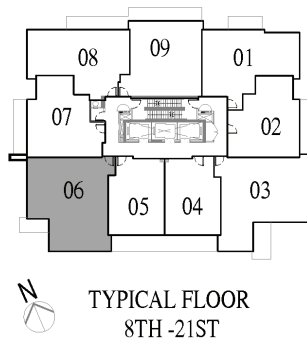
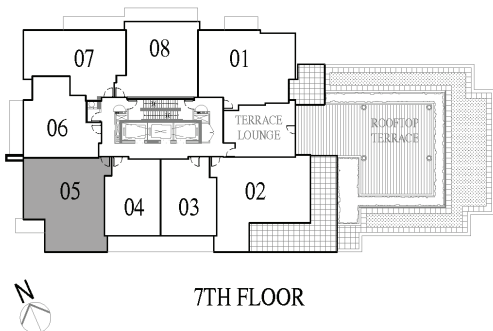
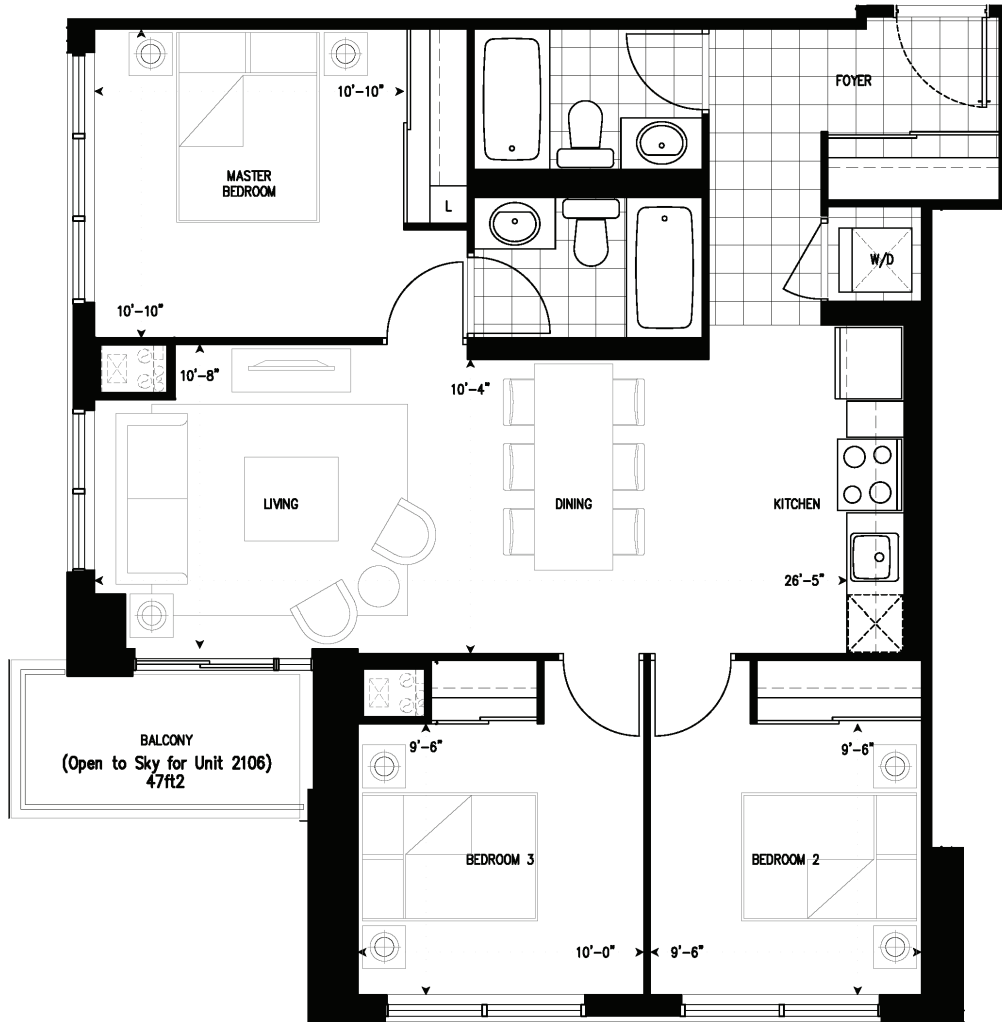


3B

988 Sq. Ft.

Three Bedroom

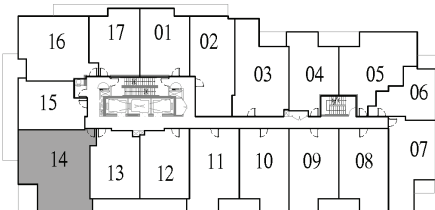
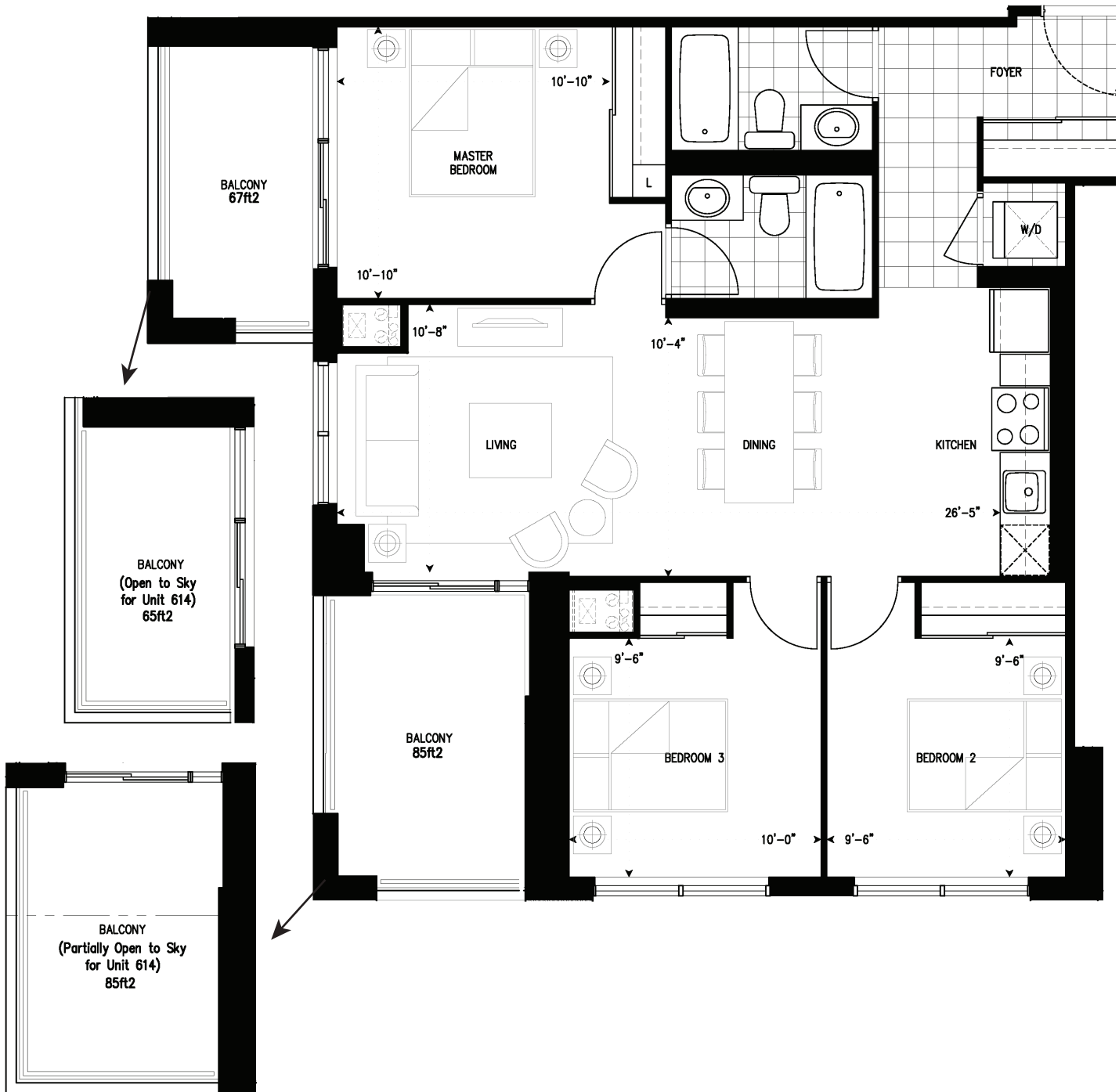
Units 705, 806, 906, 1006, 1106, 1206, 1306, 1406,
1506, 1606, 1706, 1806, 1906, 2006, 2106, 2106



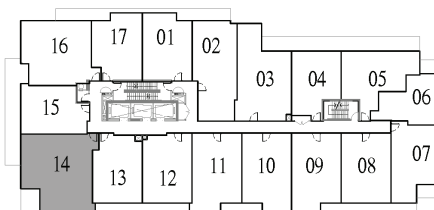
Dimensions, specifications, flooring finish pattern and architectural detailing (including window size and location) are approximate and are subject to modification without notice. Orientation of the suite may be reversed and the purchaser agrees to accept same. Actual usable floor space may vary from the stated floor area. Ceiling height is approximate and is measured from the top surface of the floor slab to the under surface of the concrete ceiling slab, before finishes. Where ceiling bulkheads are installed, the ceiling height will be less than the stated ceiling height for that floor, and where drop ceilings are required, the ceiling height will also be less than that the stated ceiling height for that floor. E.&O.E.

3B1

988 Sq. Ft.
Three Bedroom
Units 314, 414, 514, 614



3RD TO 5TH FLOOR



6TH FLOOR

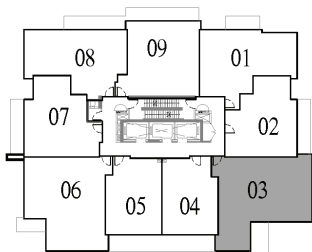
Dimensions, specifications, flooring finish pattern and architectural detailing (including window size and location) are approximate and are subject to modification without notice. Orientation of the suite may be reversed and the purchaser agrees to accept same. Actual usable floor space may vary from the stated floor area. Ceiling height is approximate and is measured from the top surface of the floor slab to the under surface of the concrete ceiling slab, before finishes. Where ceiling bulkheads are installed, the ceiling height will be less than the stated ceiling height for that floor, and where drop ceilings are required, the ceiling height will also be less than that the stated ceiling height for that floor. E.&O.E.

3C

1021 Sq. Ft.

Three Bedroom

Units 803, 903, 1003, 1103, 1203, 1303, 1403,
1503, 1603, 1703, 1803, 1903, 2003, 2103



TYPICAL FLOOR
8TH -21ST

Dimensions, specifications, flooring finish pattern and architectural detailing (including window size and location) are approximate and are subject to modification without notice. Orientation of the suite may be reversed and the purchaser agrees to accept same. Actual usable floor space may vary from the stated floor area. Ceiling height is approximate and is measured from the top surface of the floor slab to the under surface of the concrete ceiling slab, before finishes. Where ceiling bulkheads are installed, the ceiling height will be less than the stated ceiling height for that floor, and where drop ceilings are required, the ceiling height will also be less than that the stated ceiling height for that floor. E.&O.E.