



250 | LAWRENCE
AT AVENUE ROAD

INSPIRED TASTE

Internationally inspired gourmet grocery shopping steps away.

INSPIRATION REALIZED

Setting the stage for a new kind of neighbourhood architecture.

THE MODERN COLLECTOR

A beautiful backdrop for those who want to live well.

250 | LAWRENCE

AT AVENUE ROAD

DISTINCTLY AVENUE & LAWRENCE. DEFINITELY YOU.

With every new project, we have the pleasure of bringing to life impressive communities that provide not only extraordinary homes, but outstanding investments. 250 Lawrence is no exception.

This elegant nine-storey building will take shape on Lawrence Avenue, just east of Avenue Road, introducing a convenient new residential lifestyle to one of North Toronto's most coveted neighbourhoods, in a manner that respects and enhances what's already there.

The area offers everything one could want in a community, from a tranquil ravine system dotted with public gardens and jogging paths, to exciting retail and restaurants, not to mention access to some of the best schools and educational institutions in the city.

The building rises to the same level of distinction. Suites that offer spacious, thoughtfully-designed layouts, quality finishes, and light-filled interiors. They are homes optimized for today's lifestyle and built with a vision of a prosperous tomorrow. Urban living with traditional community values.

We invite you to take a closer look and discover what sets 250 Lawrence apart. You just might find a distinctive new setting that suits you to a T.





METICULOUSLY BLENDED,
FIERCELY BELOVED.

CONNECTED TO NATURE

Parks, paths, and places to stay active and fit in Bedford Park.

09

INSPIRING GENIUS

A look at the esteemed educational institutions surrounding 250 Lawrence.

10

INSPIRED TASTE

Pusateri's matriarch, Ida Pusateri, on the importance of a good olive oil and good taste.

14

24 HOURS IN BEDFORD PARK

The perfect way to pass the day in one of Toronto's most welcoming neighbourhoods.

16

CONTEMPORARY STYLE,
GENUINE CHARM.

INSPIRATION REALIZED

Quadrangle Architects speak to their affinity for mid-century modern design.

24

A PERFECT TRANSITION

An elegant porte cochère eases the transition from the public to the private realm.

26

CLOSELY-KNIT,
INVITINGLY SOCIAL.

NATURALLY AT EASE

Explore the rooftop lounge at 250 Lawrence through all four seasons.

30

LIFE IN ALIGNMENT

Secrets to staying fit and active with Barreworks instructor, Carman Chan.

36

INTIMATE SPACE,
IMPRESSIVE SCALE.

THE MODERN COLLECTOR

An interview with the designers from Patton Design Studio on the key to living comfortably.

42

A DIFFERENT PERSPECTIVE

Experience a different perspective and a new way to live in midtown.

45

BUILT FOR TODAY, BUILT FOR TOMORROW

Graywood's promise for a prosperous future.

46

A MEETING OF THE MINDS

A look at the best names in the business, hard at work behind the scenes.

48



METICULOUSLY BLENDED,
FIERCELY BELOVED.

With a plethora of parks, restaurants, retail, schools, shops, and cafés all just minutes from your front door, the neighbourhood of Bedford Park is a wonderful reminder of just how comfortable and convenient city living can be.

A network of ravines and forest connects through the community, starting at the Douglas Greenbelt, tracing a green line all the way to the Don Valley. This lush landscape sits alongside thriving urban amenities — a blend of inviting boutiques, cinemas, transit, private clubs, and gourmet grocery shops.

Delight your senses with a lineup of international products at Pusateri's Fine Foods. Shop your favourite designer brands in the stores along Yonge Street. Work up a sweat at local studios like Barreworks. Walk your kids to one of the best schools in the city.

With all of this at your fingertips, it's no wonder that Bedford Park residents are so fiercely proud and protective of their community. After all, this is a neighbourhood bursting with charm, character, and a personal touch.



CONNECTED TO NATURE

On any given afternoon you can find residents walking their dogs through the Douglas Greenbelt, a hidden band of parkland on the northeast corner of Avenue and Lawrence. The greenbelt connects to the Toronto ravine system, extending more than eight kilometres across the city all the way to the Don Valley, providing locals with easy access to a wide variety of parks, paths, and places to stay active and fit.

In fact, Bedford Park is brimming with residents who aren't willing to compromise access to nature, for life in the city. And here, they don't have to. The area surrounding Avenue and Lawrence boasts over two dozen parks filled with playgrounds, baseball diamonds, wading pools, basketball and tennis courts, not to mention the numerous walking, jogging, and cycling paths.

There are community centres and a host of private clubs, including the **Toronto Cricket Skating and Curling Club**, the **Granite Club**, and the **Rosedale Golf Club**.

The Douglas Greenbelt Ravine will be expanded with the addition of 250 Lawrence, providing improved access, putting your daily walks closer to home.



INSPIRING GENIUS

Every spring the graduating class of Haverгал College gathers under the tents on Ratcliffe Field, a stone's throw from 250 Lawrence, ready to take their place as the school's newest "Old Girls." The bright young women join the esteemed ranks of Haverгал alumni, graduates that include distinguished authors, athletes, journalists, politicians, even an inductee in the Canadian Golf Hall of Fame.

Since 1894 this revered private school for girls has been preparing young women to make a difference, turning out more than 9,000 alumnae who have helped shape the cultural, political, economic, and academic landscapes of the nation and the world. Today, Haverгал continues to build on more than a century of tradition, but they're not the only school in the area pushing the boundaries of education to turn out tomorrow's leaders.

250 Lawrence offers access to an impressive lineup of esteemed institutions including Upper Canada College, Blessed Sacrament Catholic School, Bedford Park Public School, John Ross Robertson Junior Public School, Glenview Senior Public School, and John Wanless Junior Public School, nearly all of which have consistently appeared on lists of the top schools in Toronto.

Directly across the street is Lawrence Park Collegiate Institute. The distinguished high school has consistently scored well on Ontario's EQAO testing, with 97% of students surpassing provincial standards. They also offer an award-winning music program and strong student support in the arts.





“First and foremost quality, we offer the best. Whether it’s the freshest product from the market that day or the best imports from Europe and Italy - we have it all under one roof. And, at this location, we also have staff that have been with us since the beginning, some for 30 years.”



INSPIRED TASTE Q&A WITH IDA PUSATERI



Ida Pusateri is a tough woman to get a hold of. But it should come as no surprise since she sits at the helm of a gourmet grocery chain that includes three stores, two Saks Food Halls, and plans to expand into British Columbia and Quebec.

Pusateri's, one of North Toronto's most beloved retail institutions, has been tantalizing palates from its flagship location at Avenue and Lawrence since 1986, just steps to 250 Lawrence. Today the business is run by Ida, her brother, and her three children, continuing the legacy started by her husband Cosimo and his parents, more than 50 years ago.

We had a chance to speak to the Pusateri's matriarch about today's evolving lifestyle, the importance of a good olive oil and good taste. Here's what she had to say.

Q Welcome Ida! Thank you so much for being with us today and for sharing the impressive story behind Pusateri's, a family-run business for three generations. How did you and your husband decide on Avenue and Lawrence as the location for Pusateri's flagship store?

A It's my pleasure. I'm always excited to welcome new neighbours to midtown. We were operating a small grocery store on St. Clair. It started as a fruit market and slowly we added meat and grocery items. Cosimo was a visionary, he decided to move the store to Avenue and Lawrence. We had some customers follow us there and we built up a new customer base in the neighbourhood. We really became a destination. Chefs would always say if you can't find it anywhere you can find it at Pusateri's. We began to import Italian olive oil, balsamic vinegar, Parma Ham and truffles. We became known for our amazing imports and the best local products and meat.

Q What's your favourite part about having a shop here?

A Our history in the neighbourhood. We've been around so long that we've really gotten to know our customers - they've become like one big extended family. I love walking through the store on a Saturday, chatting with old friends. We feel like we're part of the fabric of the community, this really feels like our home.

Q What do you love most about the neighbourhood?

A It's the perfect location. The street itself is always evolving, the schools are wonderful, and there's a mix of young families and older generations and everyone is so friendly. It's also really easy to get everywhere in the city from Avenue and Lawrence.

Q What sets Pusateri's apart in the market?

A First and foremost quality, we offer the best. Whether it's the freshest product from the market that day or the best imports from Europe and Italy - we have it all under one roof. And, at this location, we also have staff that have been with us since the beginning, some for 30 years.

Q Pusateri's also offers home-meal-replacement and catering, so if someone wanted to throw a dinner party with all the fun and none of the fuss, they could call up the store and order a feast set to impress?

A Our customers love good food but sometimes don't want the mess, so we have chefs in every Pusateri's location, making the freshest items for our counters. We have a full catering department offering everything from simple lunch platters to fully planned events. Our chefs will also come to your home, cook and plate a 3-course meal, and serve it to your guests. We also partner with a wine rep who will come to present a wine and food pairing. It's a wonderful event for a small dinner party and one of our most requested services these days.

24 HOURS IN BEDFORD PARK

08:00

First things first, coffee. Take a stroll to Oliva, where you can get your caffeine in many forms, from the classic Americano, to trendy Turmeric Lattes.



09:00

If breakfast is the most important meal of the day then make it a good one with a classic all-day breakfast at Uncle Betty's. On weekends, try the Betty's Benedict served on King's Hawaiian sweet rolls topped with lemon hollandaise.



10:30

Do a little window shopping (and walk off breakfast while you're at it) checking out beautiful displays of home décor at Manor Manor, beach-worthy bikinis at Melmira, or incredible floral creations at Gilded & Green.



12:00

Pick up something fast, healthy and delicious at Pusateri's for a quick lunch at home.



13:30

Time to break a sweat. Get in touch with your inner ballerina in a bAAArre class at Barreworks, or, if your hand-eye coordination is better than your rhythm, head to the Cricket Club to hit some balls on the tennis court.



17:30

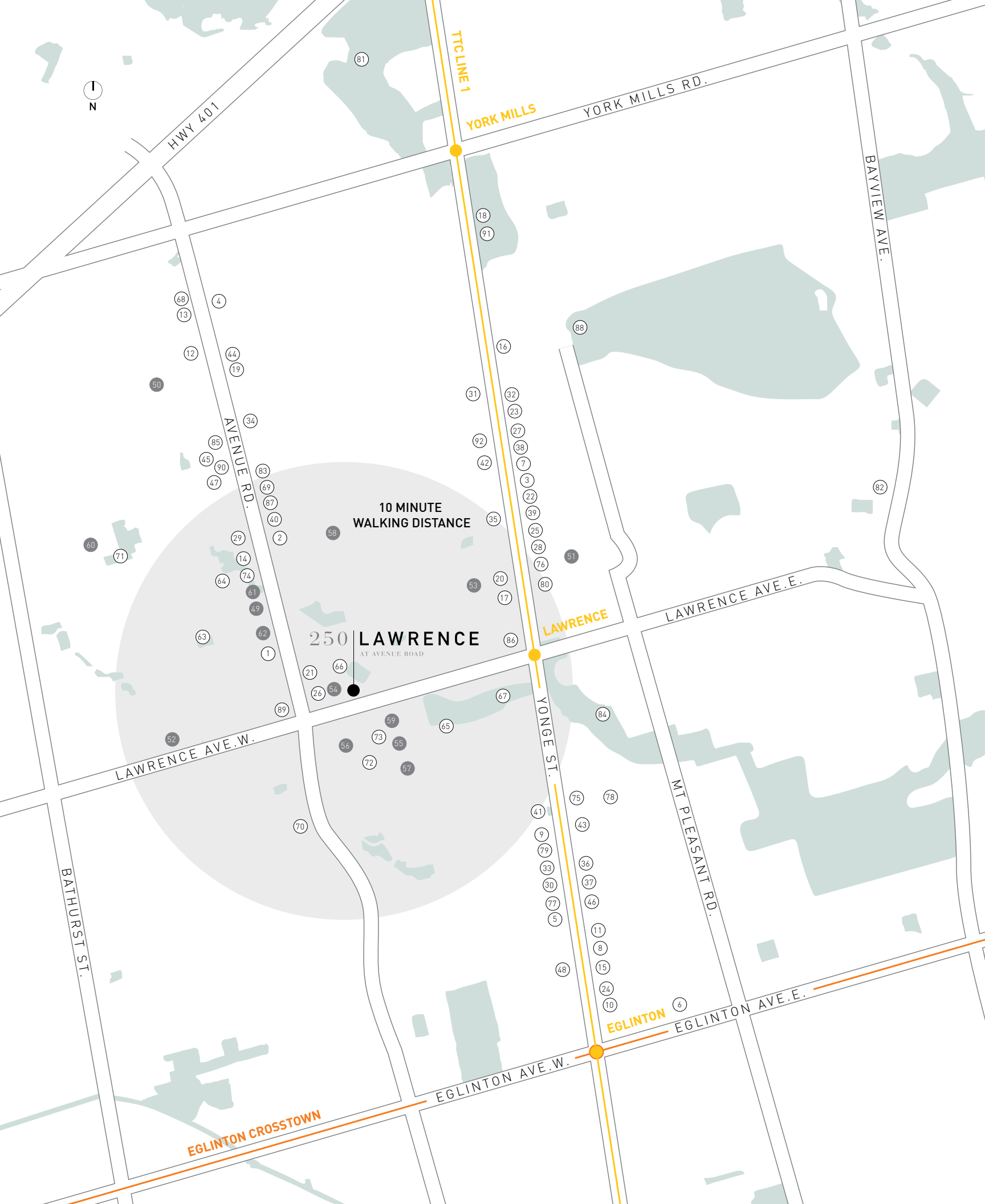
Get a fresh blowout at The Blowdry Lounge. There's no better accessory than fabulous hair.



19:00

Make sure you visit Anna Maria, owner of Tutto Pronto for her signature Spaghetti ai Frutti di Mare.





FOOD & DINING

- 1 | 12 Tables
- 2 | Ambrosia Natural Foods
- 3 | Bobbette & Belle Artisanal Pastries
- 4 | Bruno's Fine Foods
- 5 | Cibo Wine Bar
- 6 | Copacabana Brazilian Steakhouse
- 7 | Coppi
- 8 | De Mello Palheta Coffee Roasters
- 9 | Dufflet Pastries
- 10 | Grazie Ristorante
- 11 | Greenhouse Juice Co.
- 12 | Issmi Sushi
- 13 | Karbouzi
- 14 | La Bamboche
- 15 | La Vecchia Ristorante
- 16 | Loblaws
- 17 | Metro
- 18 | Miller Tavern
- 19 | Padella - Italian Eatery
- 20 | Parmigiano Trattoria
- 21 | Pusateri's Fine Foods
- 22 | Riz on Yonge
- 23 | Shinobu Sushi
- 24 | SIP Wine Bar
- 25 | STACK
- 26 | Starbucks
- 27 | The Burger Cellar
- 28 | Trio Ristorante
- 29 | Tutto Pronto
- 30 | Uncle Betty's Diner
- 31 | Wildfire Steakhouse
- 32 | Yonge Sushi

SHOPPING

- 33 | Club Monaco
- 34 | Distinct Furniture & Upholstery
- 35 | Gilded and Green Flowers
- 36 | Jerome's Menswear
- 37 | L'Occitane
- 38 | Manor Manor
- 39 | Melmira Bra & Swimsuits
- 40 | Out on a Limb Boutique
- 41 | Roots
- 42 | Spectacle
- 43 | Sporting Life
- 44 | Su Casa Design
- 45 | The Hatter
- 46 | WANT Apothecary
- 47 | Want Boutique
- 48 | West Elm

SCHOOL

- 49 | AVRO Academy
- 50 | Bannockburn School
- 51 | Bedford Park Public School
- 52 | Beth Jacob Private School
- 53 | Blessed Sacrament Catholic School
- 54 | Canadian Language Learning College
- 55 | Glenview Senior Public School
- 56 | Havergal College
- 57 | John Ross Robertson Junior Public School
- 58 | John Wanless Junior Public School
- 59 | Lawrence Park Collegiate Institute
- 60 | Ledbury Park Elementary and Middle School
- 61 | Martha Hicks School of Ballet
- 62 | Scholars Education Centre

ENTERTAINMENT & LEISURE

- 63 | Bedford Parkette
- 64 | Brookdale Park
- 65 | Chatsworth Ravine
- 66 | Douglas Greenbelt
- 67 | Duplex Parkette
- 68 | Frame of Mind Gallery
- 69 | Fusion Artz Cafe
- 70 | Heart Park
- 71 | Ledbury Outdoor Swimming Pool
- 72 | North Toronto Aquatic Club
- 73 | Otter Creek Centre
- 74 | Sheldon Rose Gallery

LIFESTYLE & OTHER

- 75 | Anytime Fitness
- 76 | Ashtanga Yoga Centre of Toronto
- 77 | Barworks
- 78 | Bella Fit Yoga
- 79 | Civello
- 80 | Corallo Men's Salon
- 81 | Don Valley Golf Course
- 82 | Granite Club
- 83 | La Beauty Boutique
- 84 | Lawrence Park Tennis Club
- 85 | LCBO
- 86 | Mind Health Toronto
- 87 | Pure Salon & Spa
- 88 | Rosedale Golf Club
- 89 | Shoppers Drug Mart
- 90 | The Blowdry Lounge
- 91 | Valley Tennis Club
- 92 | Yoga Centre Toronto







CONTEMPORARY STYLE,
GENUINE CHARM.

The mark of a great architect is not the ability to reproduce, but to reinvent. At 250 Lawrence, Quadrangle Architects have hit that mark.

The elegant nine-storey building sits beautifully within the surrounding neighbourhood, creating a notable street presence on Lawrence Avenue, while maintaining the charm and intimacy of Bedford Park. Designed with neighbouring homes, businesses, and residents in mind, the mid-rise structure blends perfectly with the streetscape, giving the impression that it's been part of the community for years.

The architecture is clean and crisp, anchored by a ground level porte cochère that invites residents and guests to step away from the bustle of midtown and enter a space where function and beauty coexist. Strong horizontal lines, oversized wood doors, and a striking colour palette of bronze and gunmetal grey offer the perfect counterpoint to emphasize natural light. Throughout the lobby, the amenities, and through each and every one of the suites, there is a sense of ease, inspired by tradition, but designed for modern life.



INSPIRATION REALIZED **Q&A WITH QUADRANGLE ARCHITECTS**

The work of Quadrangle Architects is imbued with considered design, in pursuit of a balance between beauty, functionality and feasibility. We spoke to the architects responsible for the energetic vision for 250 Lawrence, Principal, Les Klein, and Senior Associate, Dev Mehta. Here, they share their inspiration behind the building and their affinity for mid-century modern design.

Q How did you approach the design of 250 Lawrence? What was your inspiration?

LK When we looked at the surrounding context of the area we were immediately reminded of a Madmen aesthetic, that late '50s, early '60s style known as 'mid-20th-century modern' design. These are buildings that, at first glance, might be dismissed as mundane, yet when you take a closer look, they actually have an enormously beautiful level of detail and a strong aesthetic.

At 250 Lawrence we've used this aesthetic through subdued horizontal lines and a palette of imperial colours like bronze metal accents and gunmetal grey.

Q How did you consider the context of the surrounding neighbourhood in the design?

DM Another prominent feature of mid-century modern architecture is that it is often juxtaposed against a natural landscape, and we felt the site's location, adjacent to the Douglas Greenbelt, was the perfect opportunity to play up that pairing. At 250 Lawrence we've designed a building form with strong, simple horizontal lines that sit in contrast to the lush, organic backdrop of the Greenbelt.

Q What sets 250 Lawrence apart?

LK One of the things people often associate with mid-rise architecture is the idea of a heavy slab and we very much wanted to avoid that. We worked hard to blur the distinction between floors, so that they are expressed in a unique way – for example every second floor at 250 Lawrence is accented with a heavier horizontal line so the architecture becomes graphic but not repetitive. We also set back the top floors and carved out the edge of the southeast corner, creating a feature element on the first four storeys above the canopy, creating a unique design. The most successful mid-rise buildings that we've done have all incorporated those particular elements: the blurring of the lines between floors, the stepping back at higher elevations.

Q What do you think 250 Lawrence brings to the neighbourhood?

LK We hope that 250 Lawrence sets the stage for a new kind of neighbourhood architecture in Bedford Park – design that offers height, scale, and quality befitting the location. Our hope is that we will see many more buildings like this begin to define the Avenue and Lawrence neighbourhood.

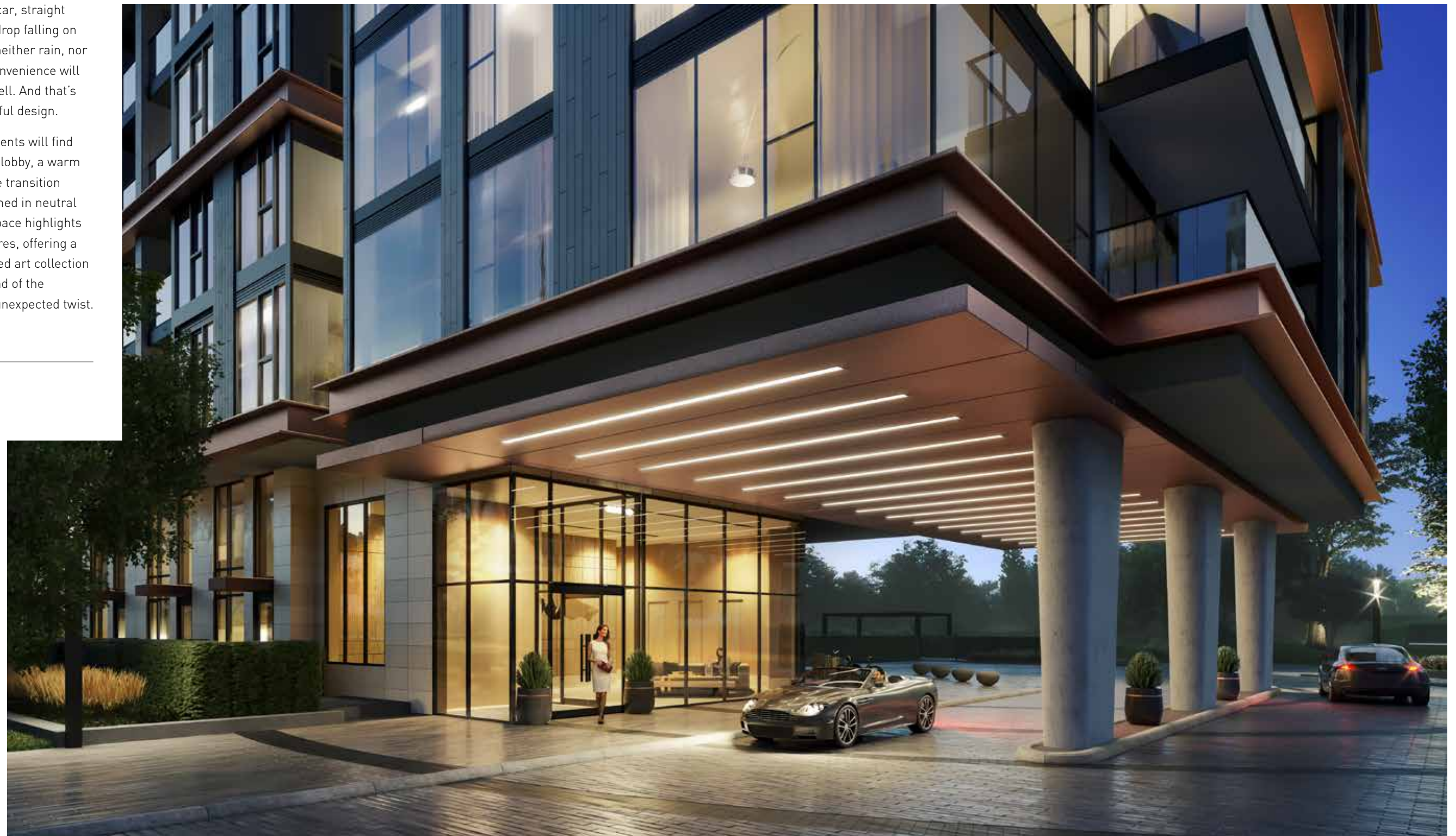
DM One thing we never lost focus on was connectivity. As the city plans for future growth in the area, connectivity and improvements to infrastructure – two elements of our design – will be key.

A PERFECT TRANSITION

There is something to be said for the ease of arriving home during a rainstorm, pulling under an elegant bronze-coloured canopy and exiting the car, straight through the front door, without a single drop falling on your favourite trench. At 250 Lawrence, neither rain, nor snow, nor any other climate-related inconvenience will hinder residents on their path to living well. And that's just one feature of the building's thoughtful design.

Passing through the porte cochère, residents will find themselves in the elegant double-height lobby, a warm and welcoming entry point that eases the transition from the public to the private realm. Bathed in neutral tones and natural finishes, the refined space highlights an array of exquisite materials and textures, offering a taste of what's to come upstairs. A curated art collection reflects the personality of the building and of the residents themselves – refined, with an unexpected twist.

PORTE COCHÈRE





CLOSELY-KNIT,
INVITINGLY SOCIAL.

If there's one word that describes the community of Bedford Park, it's "social," and 250 Lawrence mirrors that same feeling within the building that residents will find outside the front door. Whether it's in the lobby, the in-house fitness studio, the rooftop club lounge, the co-working lounge, or the rooftop terrace, 250 Lawrence is full of amenities to entertain, host, socialize, and relax.

Disconnect from your smartphone and connect to friends and family by the fireside in the ravine lounge. Find a way to stay fit without any excuses in the fitness studio. Exercise man's best friend on the dog run then clean up in the pet wash station. Set up shop on the rooftop terrace, or invite friends over for an outdoor barbeque and fight for the title of grill master. These are inviting amenities that bring people together, complete with a sense of belonging and a dash of fun.



NATURALLY AT EASE

As soon as the sun breaks through the clouds and the temperatures can respectfully be referred to as "spring," Canadians are out in force, traversing the city's walking trails and warming up the barbeque. We are a nation that prides itself on taking full advantage when Mother Nature is in a giving mood, and at 250 Lawrence, residents don't have to go far to enjoy the fresh air.

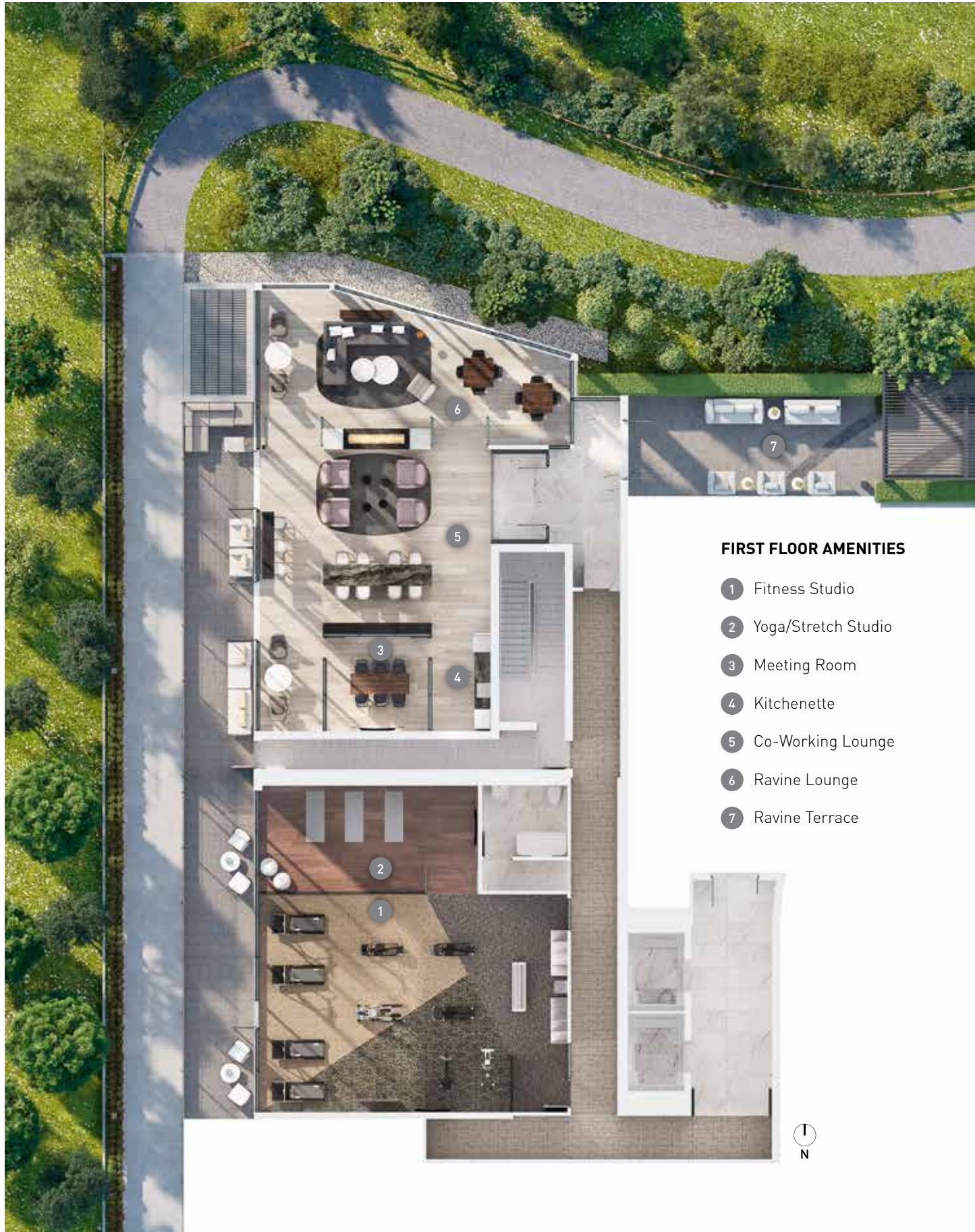
At the very top of the nine-storey building, with views stretching to North York, 250 Lawrence's rooftop terrace is the perfect place to host an impromptu patio dinner from the catering kitchen and soak up the long hours of daylight during the summer months. Shake off winter's hibernation and breathe in deep to welcome spring under a blue sky. Bask in the glow of the double-sided indoor/outdoor fireplace come fall. Or marvel at the beauty of the season's first snowfall when winter arrives. It's never out of season to get some fresh air and turn neighbours into friends.

CO-WORKING LOUNGE



ROOFTOP CLUB LOUNGE





FIRST FLOOR AMENITIES

- 1 Fitness Studio
- 2 Yoga/Stretch Studio
- 3 Meeting Room
- 4 Kitchenette
- 5 Co-Working Lounge
- 6 Ravine Lounge
- 7 Ravine Terrace



NINTH FLOOR AMENITIES

- 1 Rooftop Club Lounge
- 2 Entertaining Kitchen
- 3 Fireplace/Media Lounge
- 4 Rooftop Terrace

LIFE IN ALIGNMENT

What's the secret to a long life? Staying fit and active, whether at home or out and about. 250 Lawrence offers options for both, including a state-of-the-art fitness space located on site, and access to local sports and fitness

clubs, and neighbourhood hot spots like ballet barre-based fitness studio, Barreworks. Here we sit down with Carman Chan, an instructor at the studio's midtown location, to talk about alignment and living life on pointe.



Q Barreworks isn't your typical dance studio – what is it that people can expect from classes here?

A Contrary to popular belief, Barreworks is not a ballet studio. We offer dynamic group fitness classes that work the full body. Our methodology was developed by a team of dance and fitness professionals and combines dance, pilates, yoga, and fitness into a unique workout that focuses on optimal posture, alignment, and core strength.

Q What does fitness mean to you?

A Fitness is my favourite way to connect with others in the community, de-stress, feel confident, and connect with my own mind, body, and spirit.

Q What's your best advice for people who "don't have time" to exercise?

A Start small! You don't have to go to the gym and work out for hours in order to feel the effects and benefits of exercise - just get moving!

Q Favourite cheat food?

A I'm a sucker for the chocolate filled croissants from Himalayan Coffee House - an organic coffee shop just a minute from the studio.

Q What's your favourite thing about working at Barreworks on Yonge?

A The community. We have an incredible team that are passionate about what we do, and since your vibe attracts your tribe, our clients are passionate and incredible too!





INTIMATE SPACE,
IMPRESSIVE SCALE.

There is a thread that runs through the spaces at 250 Lawrence, one that pulls at your senses, elevating the experience to something you not only see with your eyes, but feel with your heart. Residences are designed as a statement of how you want to live, maintaining intimacy and character through the use of natural materials and contemporary fixtures that invite you to linger and give you a sense of home.

Materials like matte porcelain, wood plank floating floors, and premium quality quartz are elegant and durable, distinguished by proportion, texture, and subtle detail. Colour palettes in shades of white, sand, and gunpowder are timeless, yet provide a modern setting for your unique style to shine.

These are ideal spaces to bring people together or provide a haven of individual retreat; places outfitted with creativity, intelligence, and style, and designed to give the impression that they've evolved organically over time.

Classic, yet contemporary, the interiors at 250 Lawrence are graced with the same elements that define the neighbourhood – charm, authenticity, a sense of invitation. Proof that good design makes life better.





THE MODERN COLLECTOR Q&A WITH PATTON DESIGN STUDIO

Toronto-based design firm Patton Design Studio is renowned for creating welcoming interiors within some of the city's most notable residences. Their work speaks to a sense of taste and unpretentious comfort, borne from an appreciation for classic design. They were the obvious choice for the interiors at 250 Lawrence, spaces that meticulously blend tradition with playful nuance. We sat down for a conversation with them, that revealed the inspiration behind the project, and their ultimate goal with every design – to create spaces where people can live well and live comfortably.

Q What was the inspiration behind the interiors at 250 Lawrence?

A We design with the end lifestyle in mind, creating spaces that provide a carefree, beautiful backdrop for those who want to live well. We begin by addressing the goal that each design is intended to accomplish. Our priority is to find a solution that works well, then we concentrate on how it looks. The result isn't just great design that looks beautiful. It's design that works beautifully! Frank Lloyd Wright said it best: "form follows function."

Q How did the contemporary mid-century architecture influence your design?

A It's imperative that the design of interior and exterior spaces are unified. The international mid-century modern look that Graywood and Quadrangle chose for 250 Lawrence is one of our favourites – it's crisp and clean, with a nod to the past, perfect for both classic and modern tastes. We worked in collaboration with the architects to continue the sensibility and style of the façade throughout the interiors.

Q What are the key elements that make a space feel elegant and welcoming?

A Exceptionally beautiful, sumptuous, sophisticated materials such as stone, porcelain, and wood, interpreted with unique detailing; a variety of carefully planned lighting; interesting textures; beautiful furniture and fabrics – these are the elements that combine to create an elegant and welcoming space.

KITCHEN/DINING/LIVING ROOM



Q What's unique about the aesthetic at 250 Lawrence?

A The Bedford Park neighbourhood is a wonderful community within the city. It's an area that successfully combines an established history, green space, and peaceful streets with charming homes, gardens, schools, boutiques, gourmet food shops, and a vast variety of restaurants. The area is timeless, not trendy, and our design at 250 Lawrence follows that lead. We've used a traditional, yet refined aesthetic. Very chic. Very comfortable.

Q What's the biggest mistake to avoid when decorating a space?

A Always keep the "big picture" in mind. And make sure that furniture isn't too large for the space.

Q What excites you most about 250 Lawrence?

A We love the location! It's cosmopolitan and vibrant, yet extremely welcoming – a place where your neighbours make you feel instantly at home. Some of the suites feature ceiling heights up to 15' and the professional kitchens will turn even reluctant cooks into enthusiastic chefs.



A DIFFERENT PERSPECTIVE

Surrounded by low-rise residential neighbourhoods, backing onto the Toronto ravine network, and facing the verdant field of Lawrence Park Collegiate Institute and the forested grounds at Havergal College, 250 Lawrence offers a plethora of truly spectacular views.

The expansive scenes create an unexpected sense of space and luxury that many people don't anticipate from a condominium lifestyle. But that's only because they haven't seen 250 Lawrence.

Here, residents will look out the window and feel a sense of lightness as their eyes travel across treetops and graze the rooftops to the city beyond. This is a different perspective on life, a new way of seeing things, and a new way to live in midtown.

BUILT FOR TODAY, BUILT FOR TOMORROW.

Shouldn't a home be both a place to rest your head and a rewarding investment? That has been Graywood's philosophy for over three decades. As a Toronto-based private investment management company that specializes in the development of real estate properties of exceptional quality, we have a keen eye on how and where people want to live, and we work hard to ensure that our purchasers are making the right investment, both personally and financially.



From our home base in Toronto, we have developed an impressive portfolio of single-family homes, townhomes, boutique mid-rise condo buildings, and high-rise towers throughout North America. From the landmark Ritz Carlton Hotel and Residences, Toronto to notable communities like Ocean Club, The Mercer, Five St. Joseph, Peter and Adelaide, Scoop, and Scout, Wonder Condos, as well as Fish Creek Exchange, and The Theodore in Calgary, we believe in developing spaces that are not just optimized for life today, but built with a vision of a prosperous tomorrow. Because if a home is one of the biggest investments you'll ever make, shouldn't your real estate developer also be an investment expert?

We think so. And that's why we're both.



FIVE ST. JOSEPH,
TORONTO



WONDER CONDOS & LOFTS,
TORONTO



RITZ CARLTON HOTEL & RESIDENCES,
TORONTO



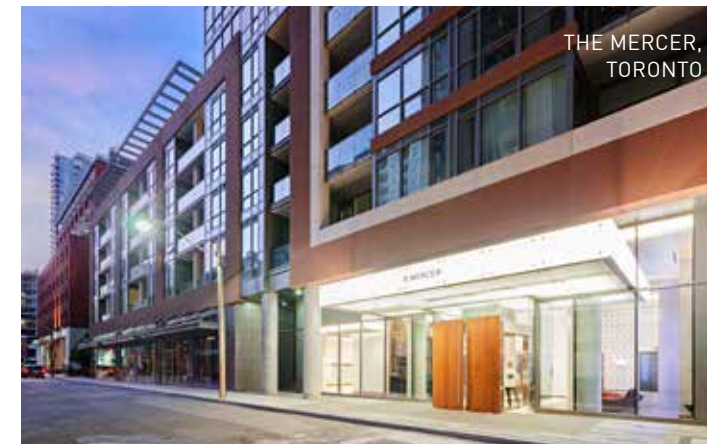
OCEAN CLUB,
TORONTO



PETER & ADELAIDE,
TORONTO



EUROPA,
TORONTO



THE MERCER,
TORONTO

A MEETING OF THE MINDS

Bringing an elegant new residential lifestyle to fruition is not a job for a single entity. As the adage goes, it takes a village, and for 250 Lawrence, that “village” is made up of some of the best names in the business. From design to sales to construction, from the ground outside to the suites within, this building represents a meeting of masterful minds. Here’s a look.



QUADRANGLE, ARCHITECTURE

Quadrangle can be summed up in two words: inspiration realized. For nearly 35 years, this full-service architecture firm has been shaping the city skyline with award-winning projects that include commercial, mixed-use, multi-unit residential, content media and retail markets. They design spaces where people live, work and play, where design and business go together, and where creativity and sustainability are inseparable. Using light, space, materials and movement, the firm helps redefine the human experience for the better.



STRYBOS BARRON KING, LANDSCAPE DESIGN

Motivated by purpose and creativity, the team of Landscape Architects and designers at Strybos Barron King deliver functional, innovative, and aesthetically pleasing landscape solutions for projects across the GTA. The design team at SBK create unique and sustainable landscapes that maintain a respect for the natural environment while addressing the needs of the user. This sensitive approach has garnered the firm numerous awards and has earned them an esteemed position within the development industry.



PATTON DESIGN STUDIO, INTERIOR DESIGN

Patton Design Studio is a creative team of interior designers that have worked with developers and private residential clients for over 30 years. The studio continues to create elegant, timeless spaces in both high-rise and low-rise developments as well as private city and country residences in Canada and abroad. The Studio is not tied to a signature style. Diversity continues to challenge the creative interpretation to reflect their clients’ needs and aspirations. It is by combining the old and the new, foreign and familiar that they find inspiration that is relevant to all of their design and marketing work.



MONTANA STEELE, MARKETING

Toronto-based strategic marketing firm Montana Steele has been creating award-winning real estate brands, at home and around the world, for more than two decades. The firm is widely regarded as North America’s leading agency for new homes and condo developments, and for good reason; in 25 years Montana Steele has launched nearly 1000 successful projects, in 30 cities, with some of the biggest names in the business. They have a passionate team of industry experts, skilled in every stage of the marketing cycle. From launch to sell-out, from beginning to end, Montana Steele crafts the story of how people want to live.



BAKER REAL ESTATE, SALES

Baker is the engine that powers the country’s most successful real estate networks, bringing innovation, expertise, technology, and unparalleled experience to every new challenge. Being Canada’s industry leader in the planning, sales and marketing of luxury residential and resort developments, the company works at every scale, in all four corners of the globe, lending extensive expertise at every step - from architecture to advertising, legal to logistics.



All illustrations are artist's concept and all content and specifications are subject to change without notice. Exclusive Listing: Baker Real Estate Incorporated, Brokerage. Brokers Protected. E. & O.E.

A new residential boutique lifestyle in one of North Toronto's most coveted neighbourhoods. Spacious, thoughtfully-designed layouts. Quality finishes. Light-filled interiors. Homes optimized for today and built with a vision of tomorrow.



250LAWRENCE.COM