



THE  
**KING'S MILL**  
—  —  
AT BACKYARD CONDOS

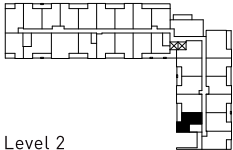
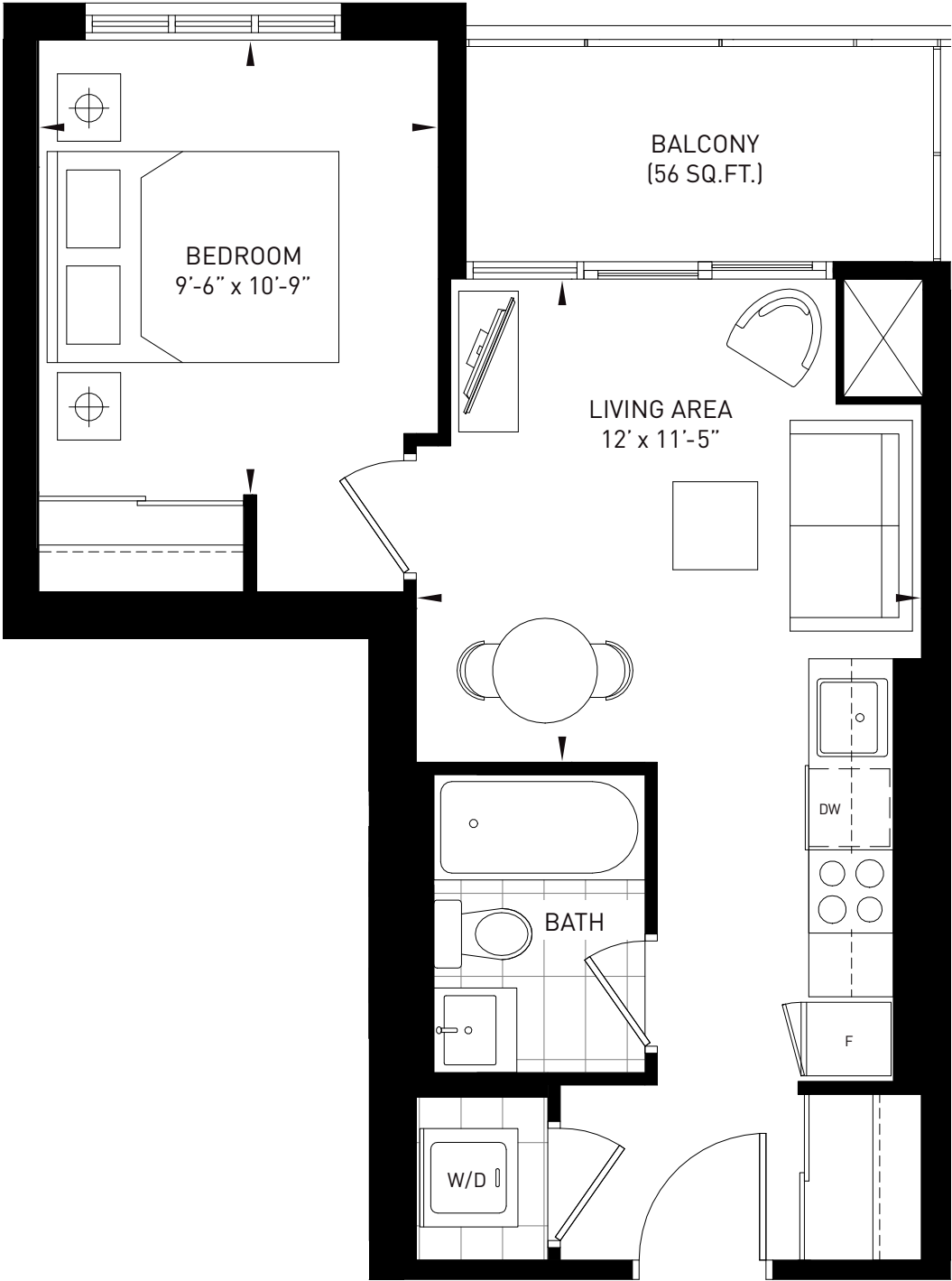
1 B E D R O O M

# EASY

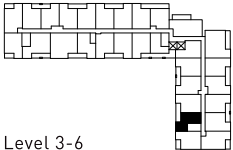
518 Square Feet

INDOOR: 462 SQ.FT. / OUTDOOR: 56 SQ.FT.

Starting Price - \$430,990



Level 2



Level 3-6



All measurements and dimensions are approximate and are not guaranteed to be exact or to scale. Actual usable floor area may vary from stated floor area. Dimensions may vary with actual construction. Furnishings and accessories represented are for illustration purposes only and are not included. Specifications, sizes, materials are subject to change without notice. E&O.E.



1 B E D R O O M

THE  
KING'S MILL  
AT BACKYARD CONDOS

# CALM

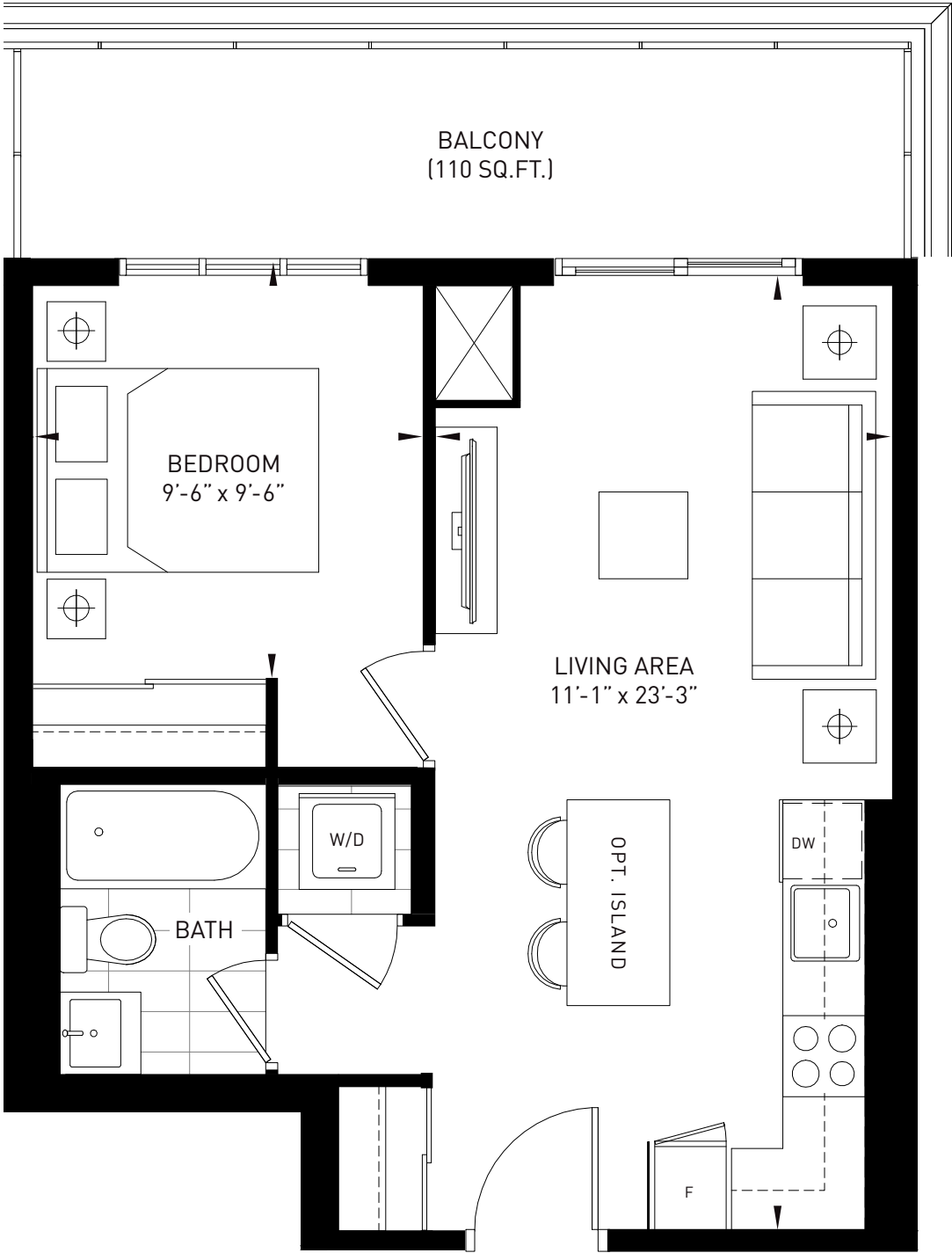
618 Square Feet

INDOOR: 508 SQ.FT. / OUTDOOR: 110 SQ.FT.

2nd Floor - North/East - 449,990.



Patio on Level 1 (110 sq.ft.)



Level 1

Level 2

Level 3-6

Level 7



All measurements and dimensions are approximate and are not guaranteed to be exact or to scale. Actual usable floor area may vary from stated floor area. Dimensions may vary with actual construction. Furnishings and accessories represented are for illustration purposes only and are not included. Specifications, sizes, materials are subject to change without notice. E&O.E.



1 B E D R O O M + D E N



# VIBE

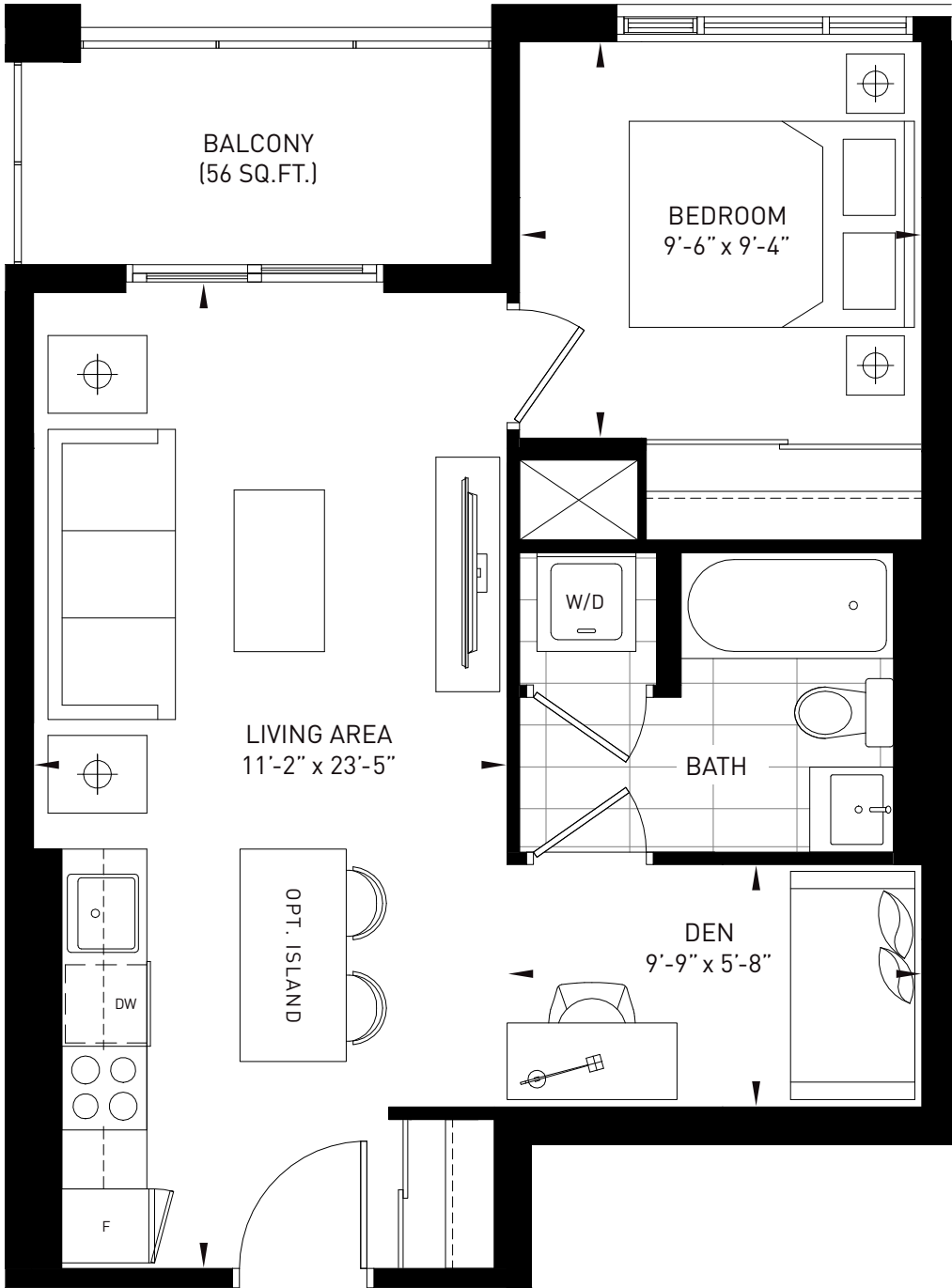
610 Square Feet

INDOOR: 554 SQ.FT. / OUTDOOR: 56 SQ.FT.



Pricing Starting at \$454,990

Patio on Level 1 (56 sq.ft.)



Level 1

Level 2

Level 3-6

Level 7

Level 8



All measurements and dimensions are approximate and are not guaranteed to be exact or to scale. Actual usable floor area may vary from stated floor area. Dimensions may vary with actual construction. Furnishings and accessories represented are for illustration purposes only and are not included. Specifications, sizes, materials are subject to change without notice. E&O.E.



1 BEDROOM + DEN

THE  
KING'S MILL  
AT BACKYARD CONDOS

# IMAGINE

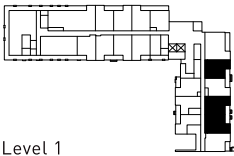
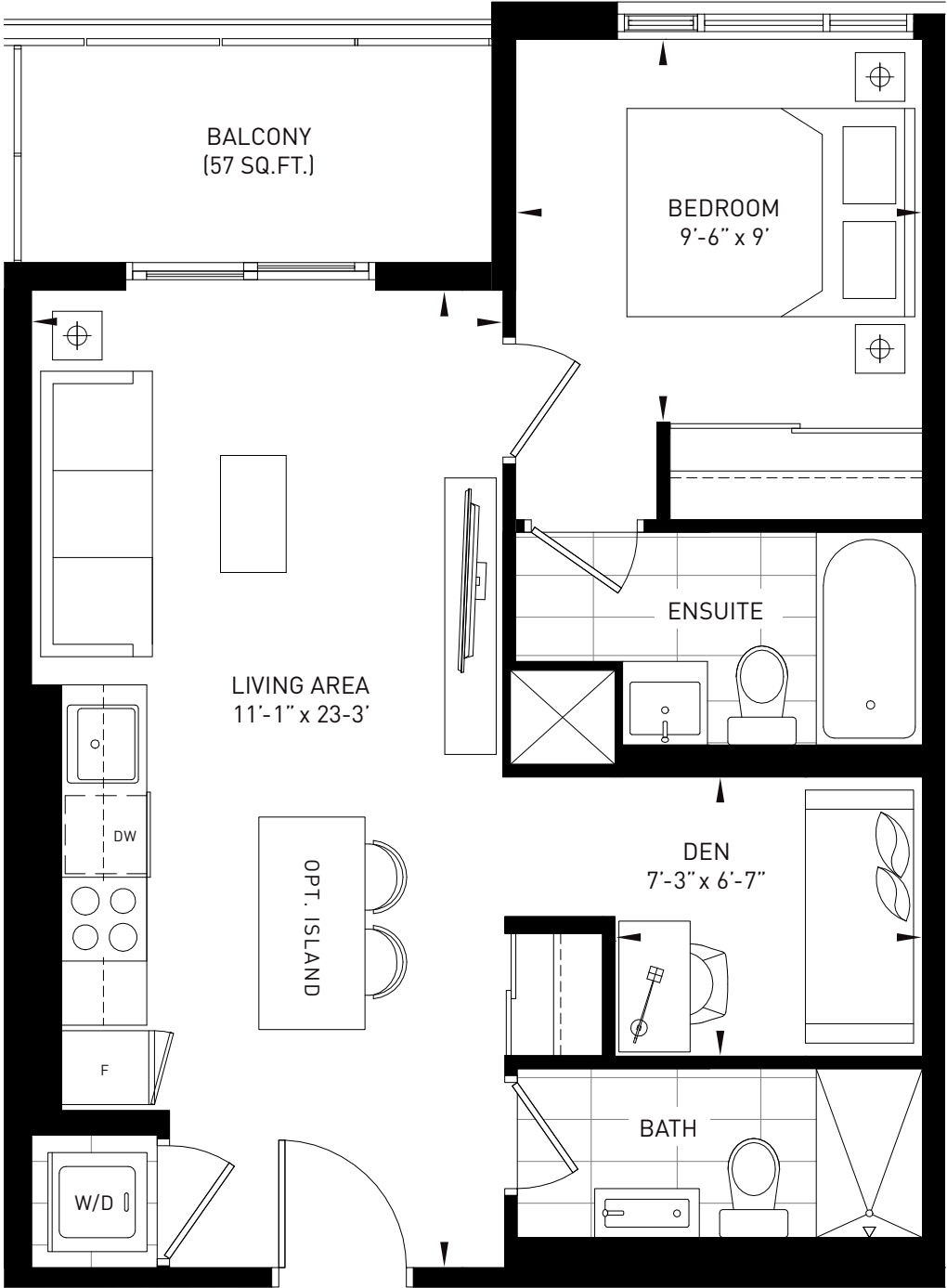
643 Square Feet

INDOOR: 586 SQ.FT. / OUTDOOR: 57 SQ.FT.

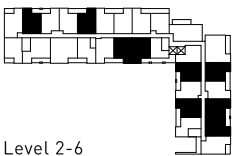
CROWD  
PLEASER

Starting Price - \$468,990

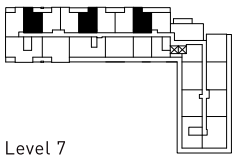
Patio on Level 1 (57 sq.ft.)



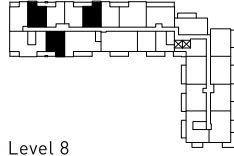
Level 1



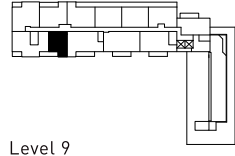
Level 2-6



Level 7



Level 8



Level 9



All measurements and dimensions are approximate and are not guaranteed to be exact or to scale. Actual usable floor area may vary from stated floor area. Dimensions may vary with actual construction. Furnishings and accessories represented are for illustration purposes only and are not included. Specifications, sizes, materials are subject to change without notice. E&O.E.



1 B E D R O O M + D E N

THE  
KING'S MILL  
AT BACKYARD CONDOS

# IMAGINE

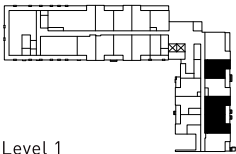
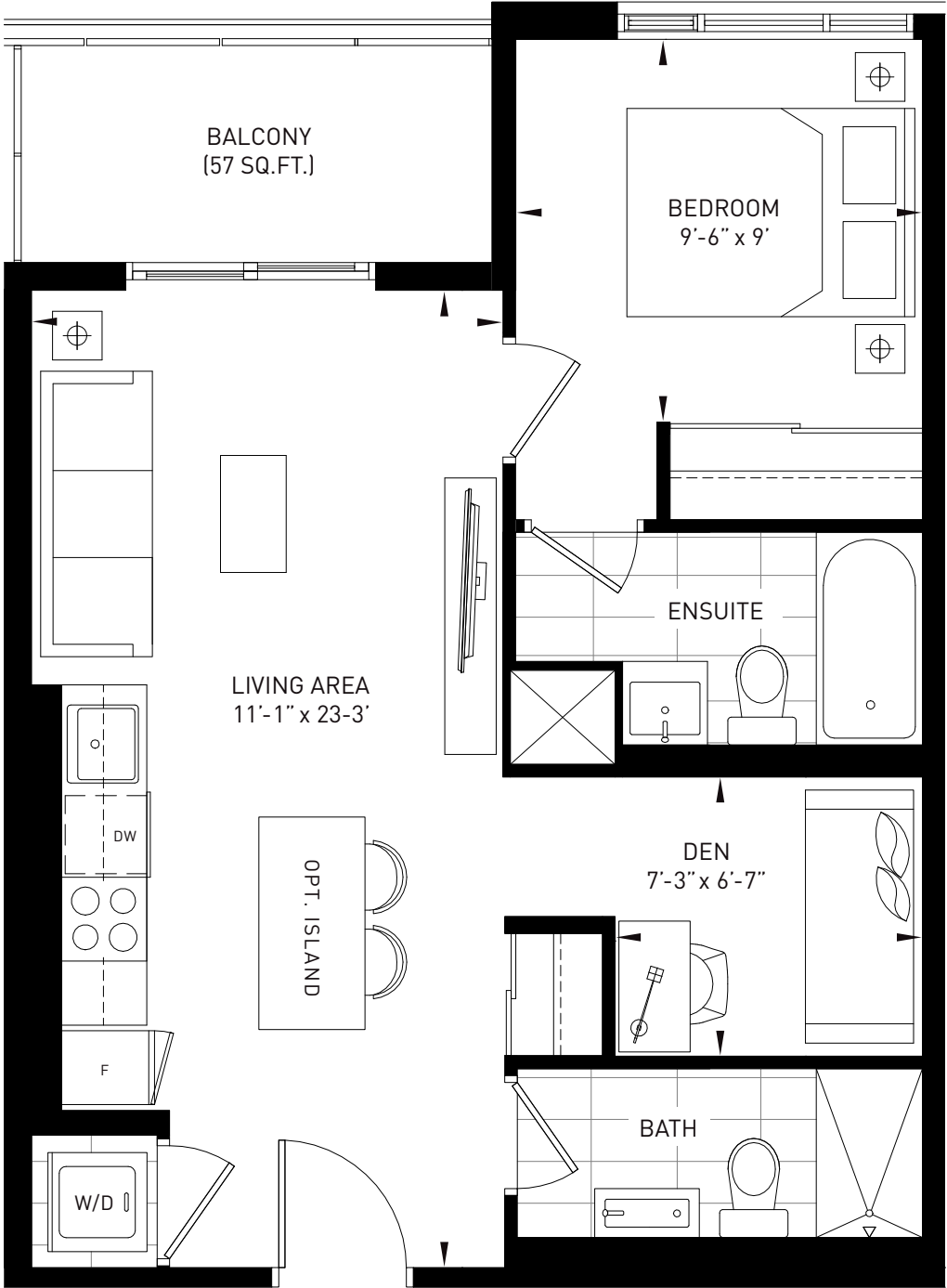
643 Square Feet

INDOOR: 586 SQ.FT. / OUTDOOR: 57 SQ.FT.

1st Floor - East - \$478,990.

CROWD  
PLEASER

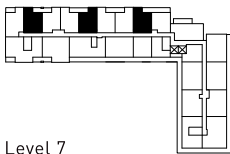
Patio on Level 1 (57 sq.ft.)



Level 1



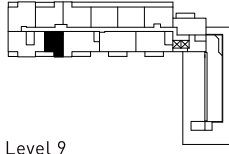
Level 2-6



Level 7



Level 8



Level 9



All measurements and dimensions are approximate and are not guaranteed to be exact or to scale. Actual usable floor area may vary from stated floor area. Dimensions may vary with actual construction. Furnishings and accessories represented are for illustration purposes only and are not included. Specifications, sizes, materials are subject to change without notice. E&O.E.



2 B E D R O O M

THE  
KING'S MILL  
AT BACKYARD CONDOS

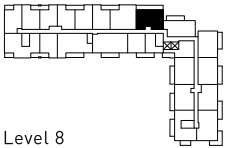
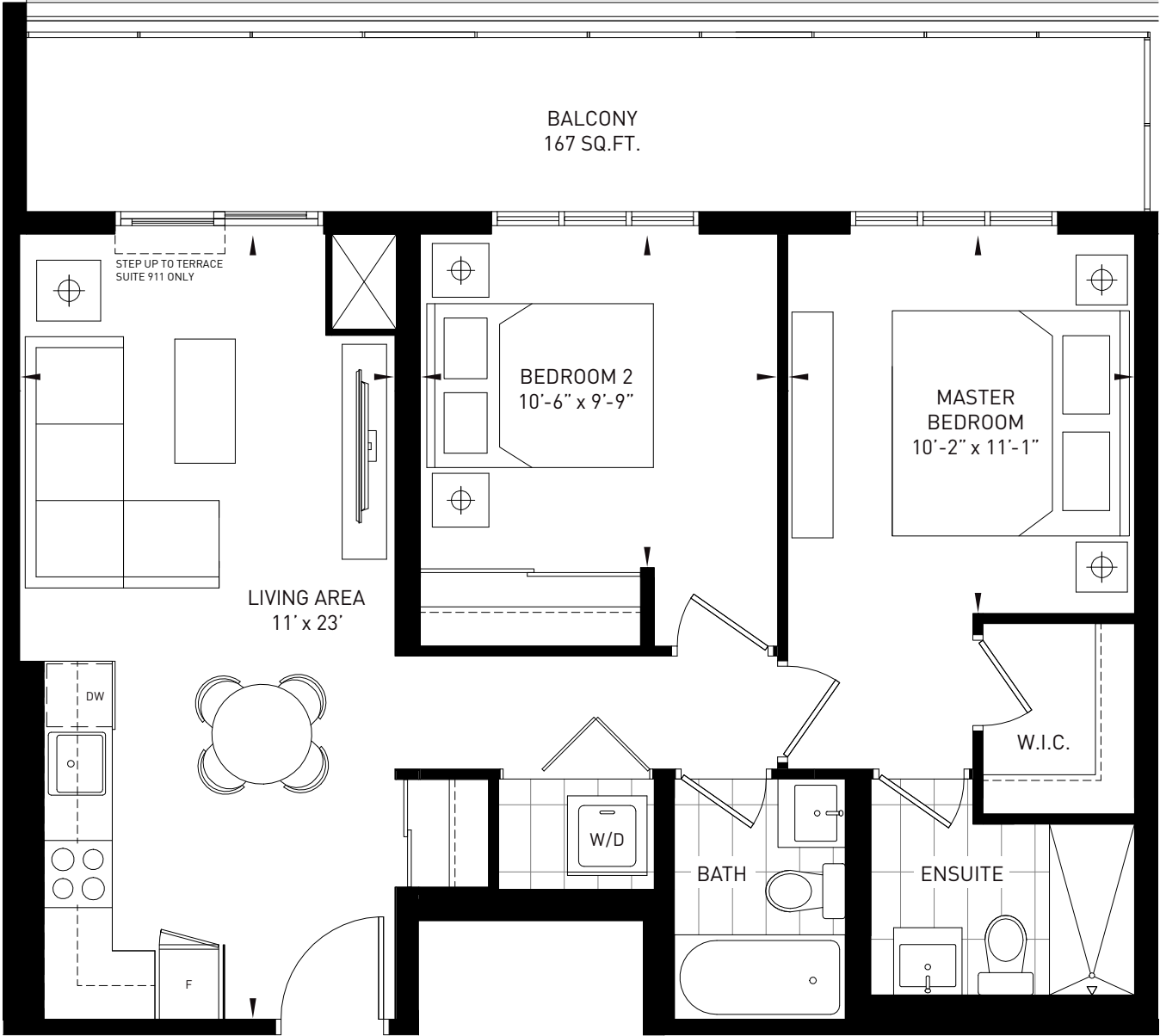
# PEACE

953 Square Feet  
INDOOR: 786 SQ.FT. / OUTDOOR: 167 SQ.FT.

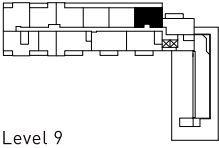
NORTHERN  
HEIGHTS

Pricing Starting at \$576,990

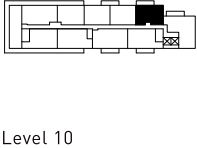
Terrace on Level 9 (171 sq.ft.) / Balcony on Level 10 (109 sq.ft.)



Level 8



Level 9



Level 10



All measurements and dimensions are approximate and are not guaranteed to be exact or to scale. Actual usable floor area may vary from stated floor area. Dimensions may vary with actual construction. Furnishings and accessories represented are for illustration purposes only and are not included. Specifications, sizes, materials are subject to change without notice. E&O.E.



2 B E D R O O M

THE  
**KING'S MILL**  
— ✂ —  
AT BACKYARD CONDOS

# BRILLIANT

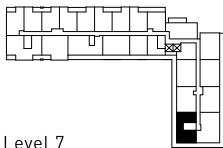
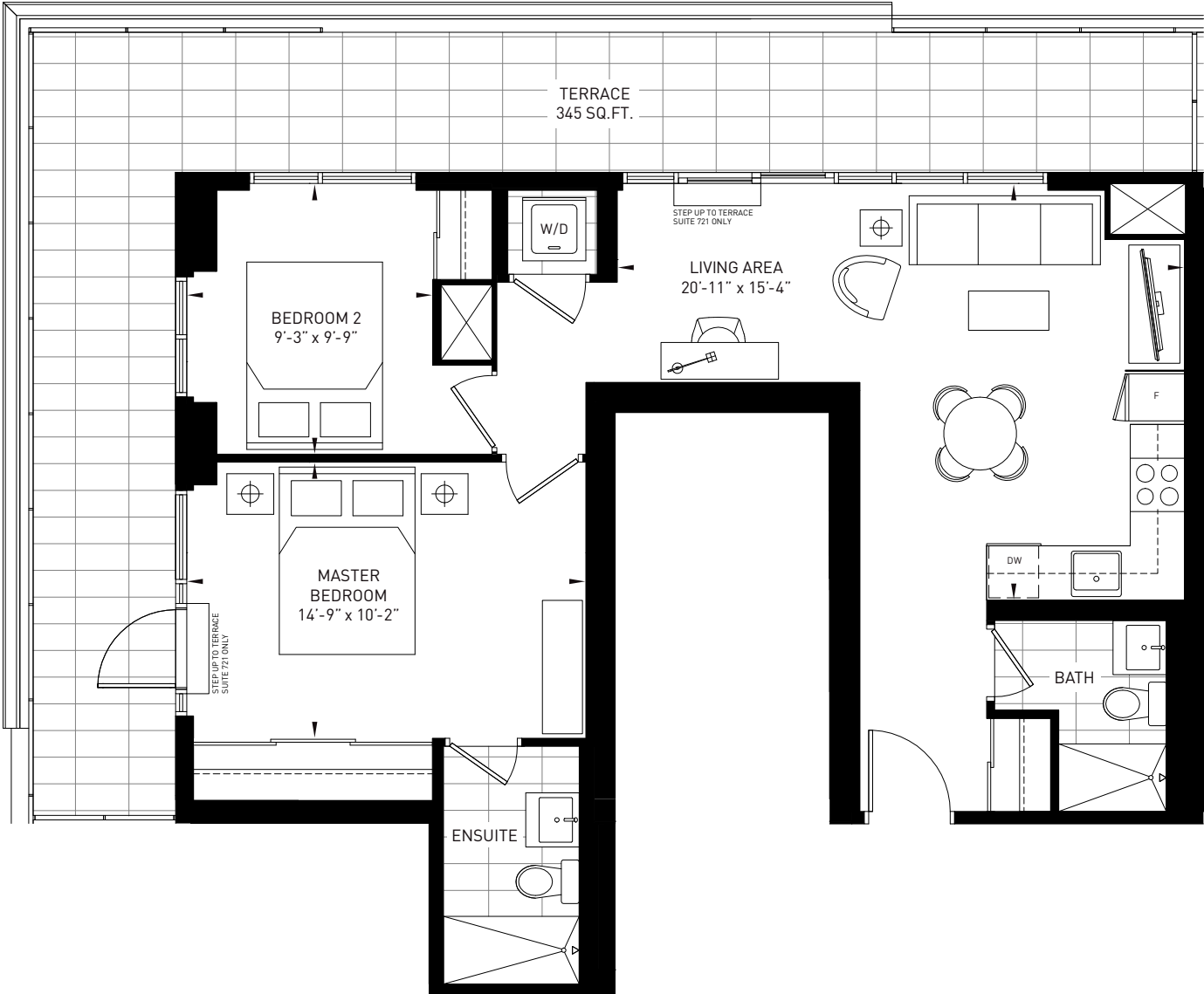
1,165 Square Feet

INDOOR: 820 SQ.FT. / OUTDOOR: 345 SQ.FT.

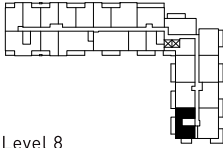
BIG &  
BRIGHT

7th Floor - South/West - \$659,990

Balconies on Level 8 (170 sq.ft.)



Level 7



Level 8



THE  
**KING'S MILL**  
AT BACKYARD CONDOS

3 B E D R O O M + D E N

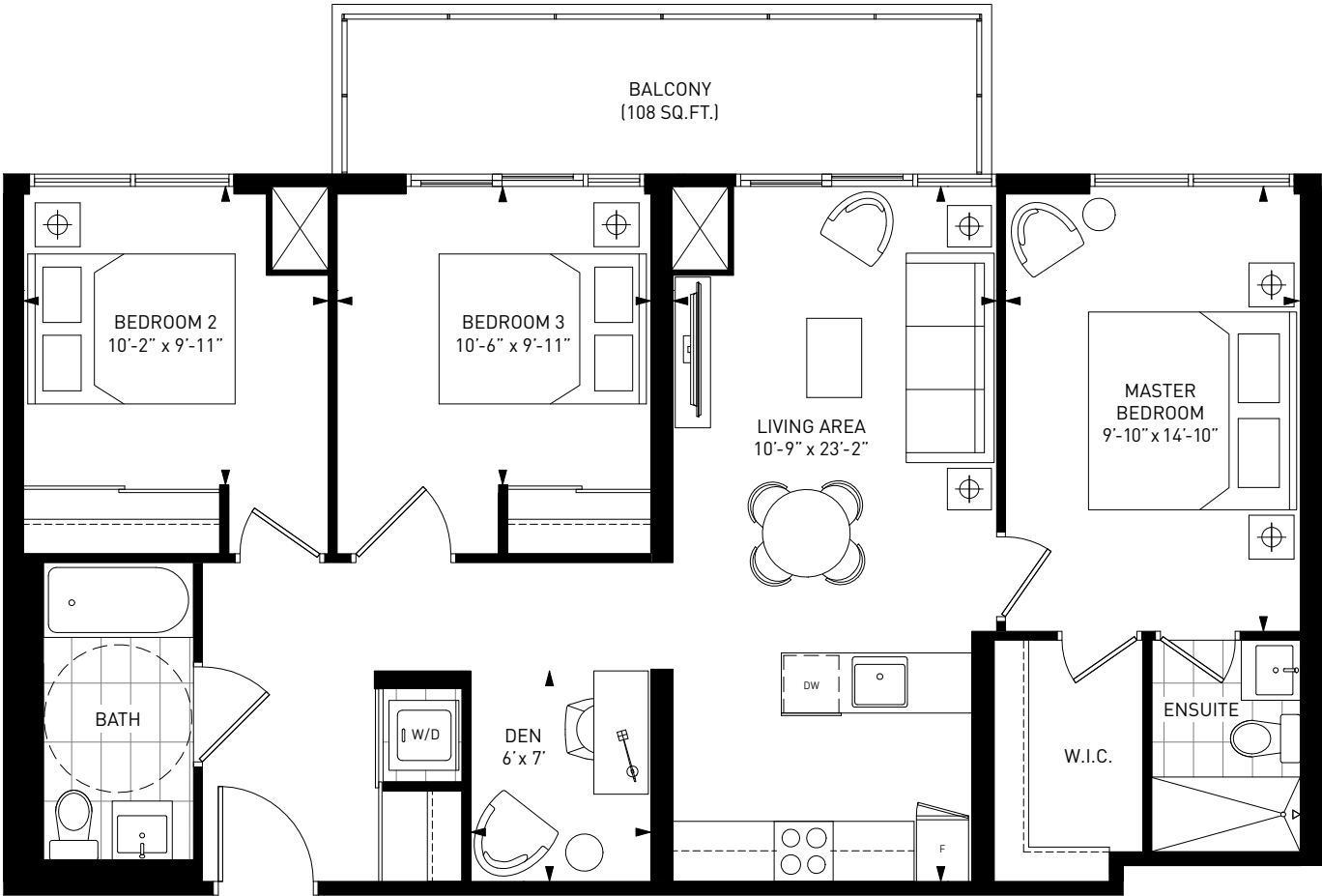
# VIBRANT

1,147 Square Feet

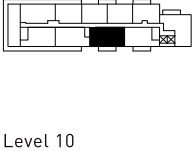
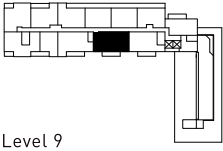
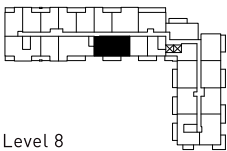
INDOOR: 1,039 SQ.FT. / OUTDOOR: 108 SQ.FT.



8th Floor - South - \$749,990.



Barrier-Free Floorplan



All measurements and dimensions are approximate and are not guaranteed to be exact or to scale. Actual usable floor area may vary from stated floor area. Dimensions may vary with actual construction. Furnishings and accessories represented are for illustration purposes only and are not included. Specifications, sizes, materials are subject to change without notice. E&O.E.