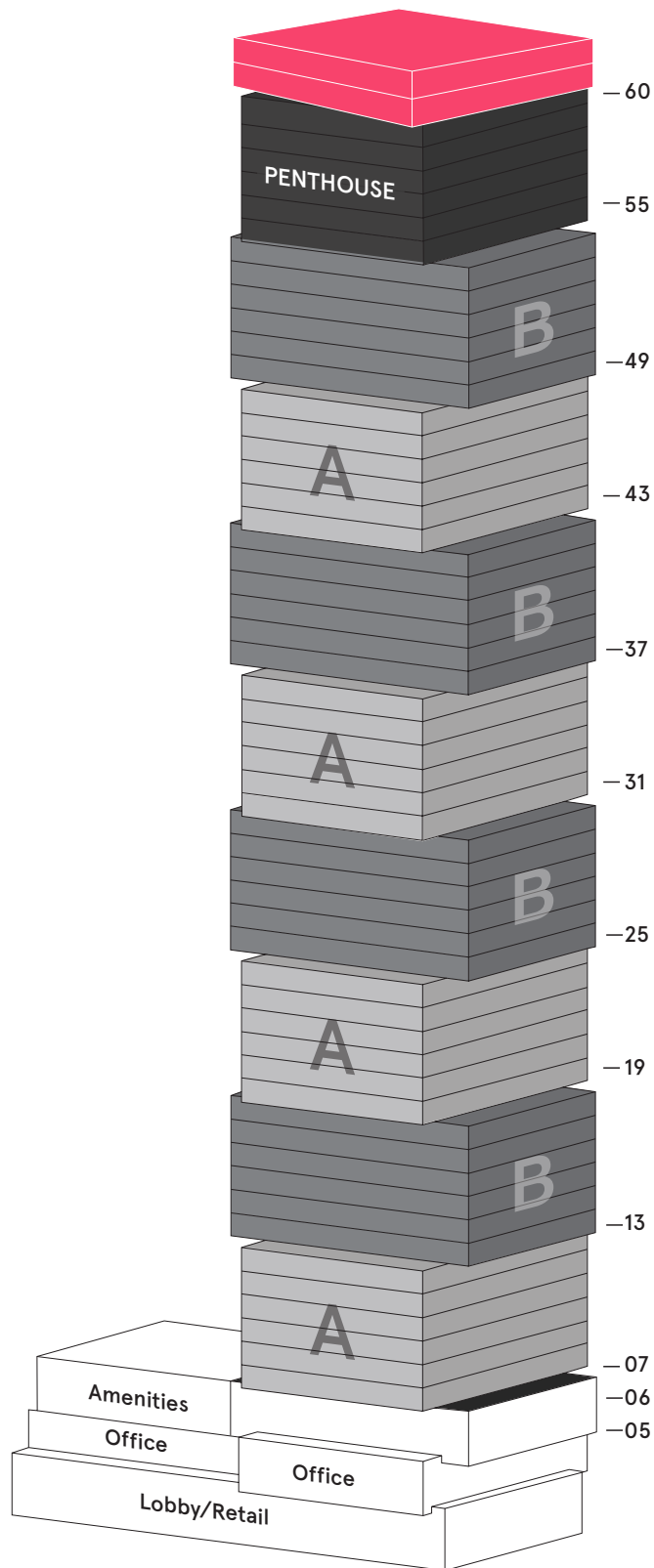




EXCHANGE DISTRICT

Massing Diagram

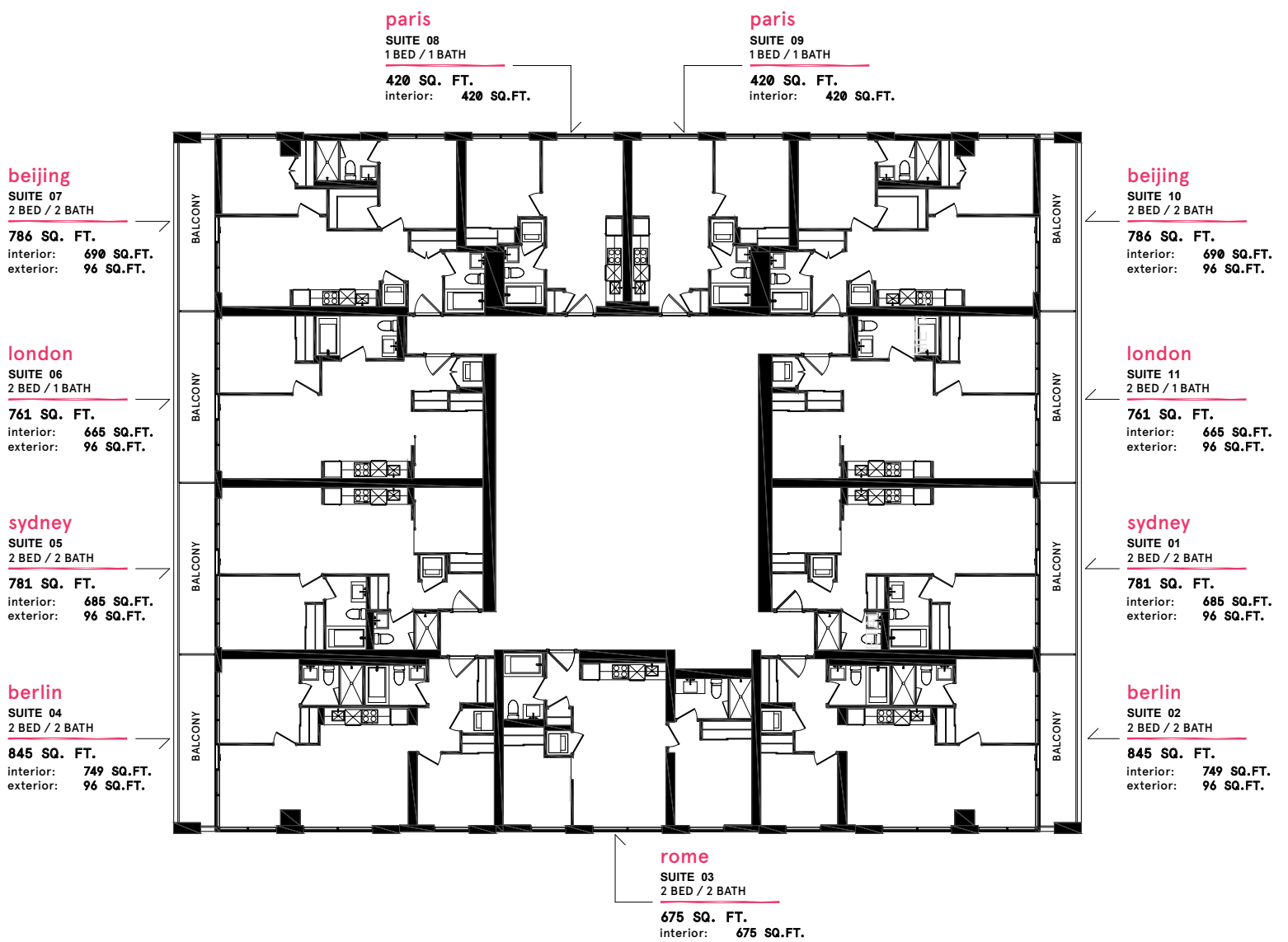


- Penthouse
- Typical Floor: A
- Typical Floor: B

Dimensions, specifications, layouts (including but not limited to tile patterns), window sizes, mullions, fixture representation, appliance and fixture locations, and materials are approximate only, may vary, and are subject to changes without notice as provided in the Agreement of Purchase and Sale. Plans may be reversed or flipped. Wall thickness will vary with floor levels reducing room dimensions accordingly. Actual usable floor space may vary from the stated floor area. Measurements of rooms set forth on any floor plan are generally taken at the greatest points of each given room and center line of windows (as if the room were perfectly rectangular). Furniture or Chattels are not included. Prices are subject to change without notice. E. & O. E. Plans are not to scale. For more information on the method used for calculating floor area of any unit, reference should be made to Builder Bulletin NO. 22 published by Tarion.

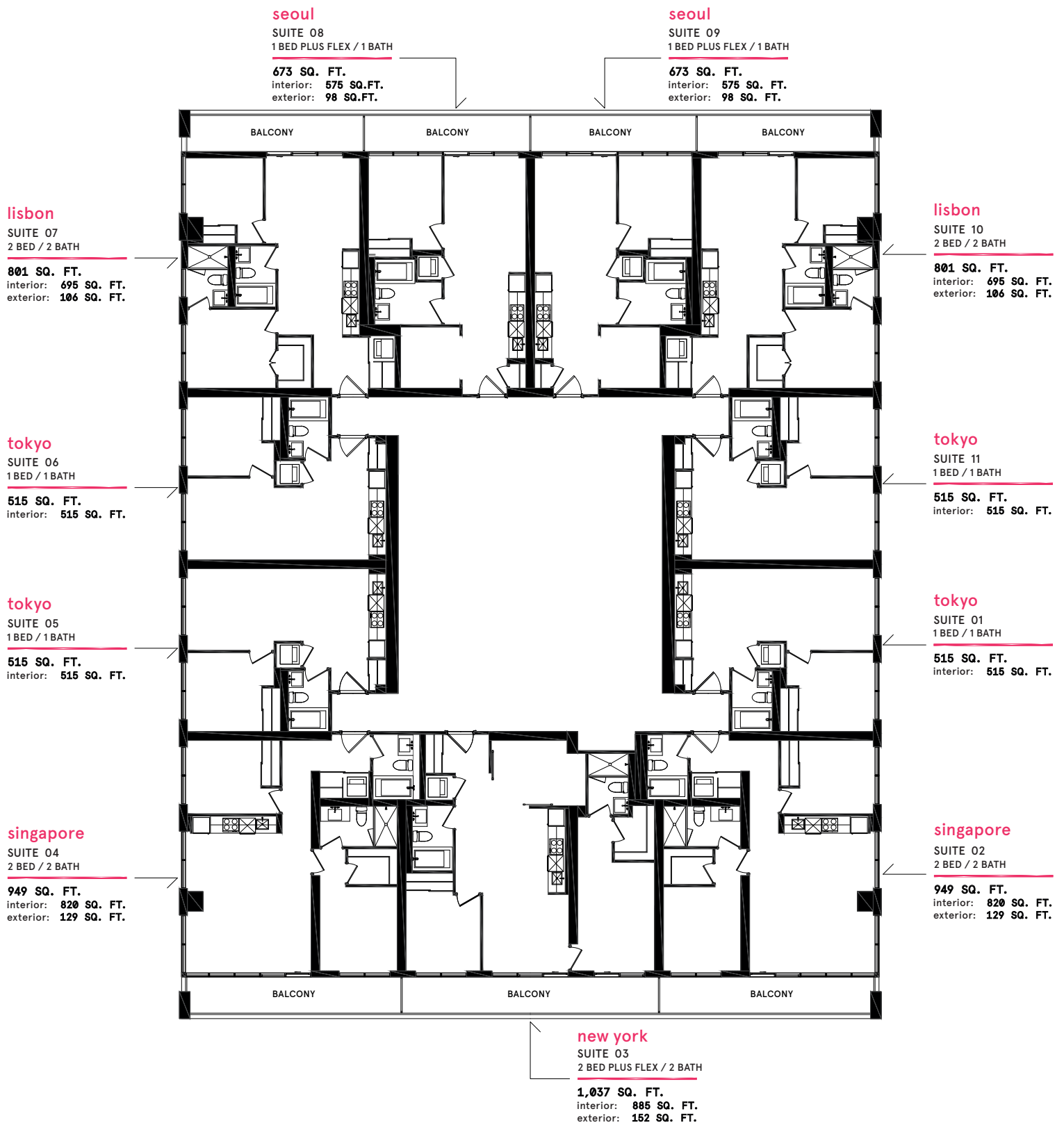


EXCHANGE DISTRICT





EXCHANGE DISTRICT



 **TYPICAL FLOOR - B**

Dimensions, specifications, layouts (including but not limited to tile patterns), window sizes, mullions, fixture representation, appliance and fixture locations, and materials are approximate only, may vary, and are subject to changes without notice as provided in the Agreement of Purchase and Sale. Plans may be reversed or flipped. Wall thickness will vary with floor levels reducing room dimensions accordingly. Actual usable floor space may vary from the stated floor area. Measurements of rooms set forth on any floor plan are generally taken at the greatest points of each given room and center line of windows (as if the room were perfectly rectangular). Furniture or Chattels are not included. Prices are subject to change without notice. E. & O. E. Plans are not to scale. For more information on the method used for calculating floor area of any unit, reference should be made to Builder Bulletin NO. 22 published by Tarion.