



TRIDEL®
BUILT FOR LIFE

ROWNTREE™
ENTERPRISES

CHATEAU

AUBERGE ON THE PARK



LUXURY BY NATURE

Auberge on the Park is a breath of fresh air, rising above an iconic and storied locale. Once a world-renowned urban resort and the first of its kind, Inn on the Park was the place to see and be seen, effectively defining the luxury now synonymous with Leslie and Eglinton.

Today, nestled amidst the extravagant estate homes of Leaside, Bridle Path and Hoggs Hollow, a breeze away from boutique-lined Mount Pleasant and effervescent Yonge Street, the aura surrounding the Auberge on the Park community is one steeped in affluence, history, leisure, and lush, green parkland.



FEAST YOUR EYES

Taking its place as the third and final, most indulgent building in the esteemed Auberge on the Park community, Chateau is a monument to elegance and style.

Under the dazzling blue sky, Chateau stands in the sunlight, climbing to where the air is fresher. Cascading terraces and luminescent glass walls invite the thrill of discovering unsurpassed views.

SITE PLAN

A fortress of glamour and allure, Chateau is perfectly situated within Auberge on the Park, surrounded by the leafy tranquility of Sunnybrook parkland. Chateau residents will embrace living within this master-planned community, interconnected by a vast network of treed pathways.





CHATEAU ENTRANCE



LOBBY





FLOOR PLANS

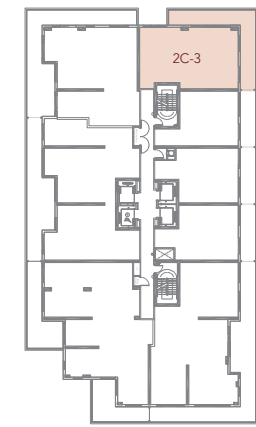
CHATEAU
AUBERGE ON THE PARK

2C-3

949 SQ.FT.

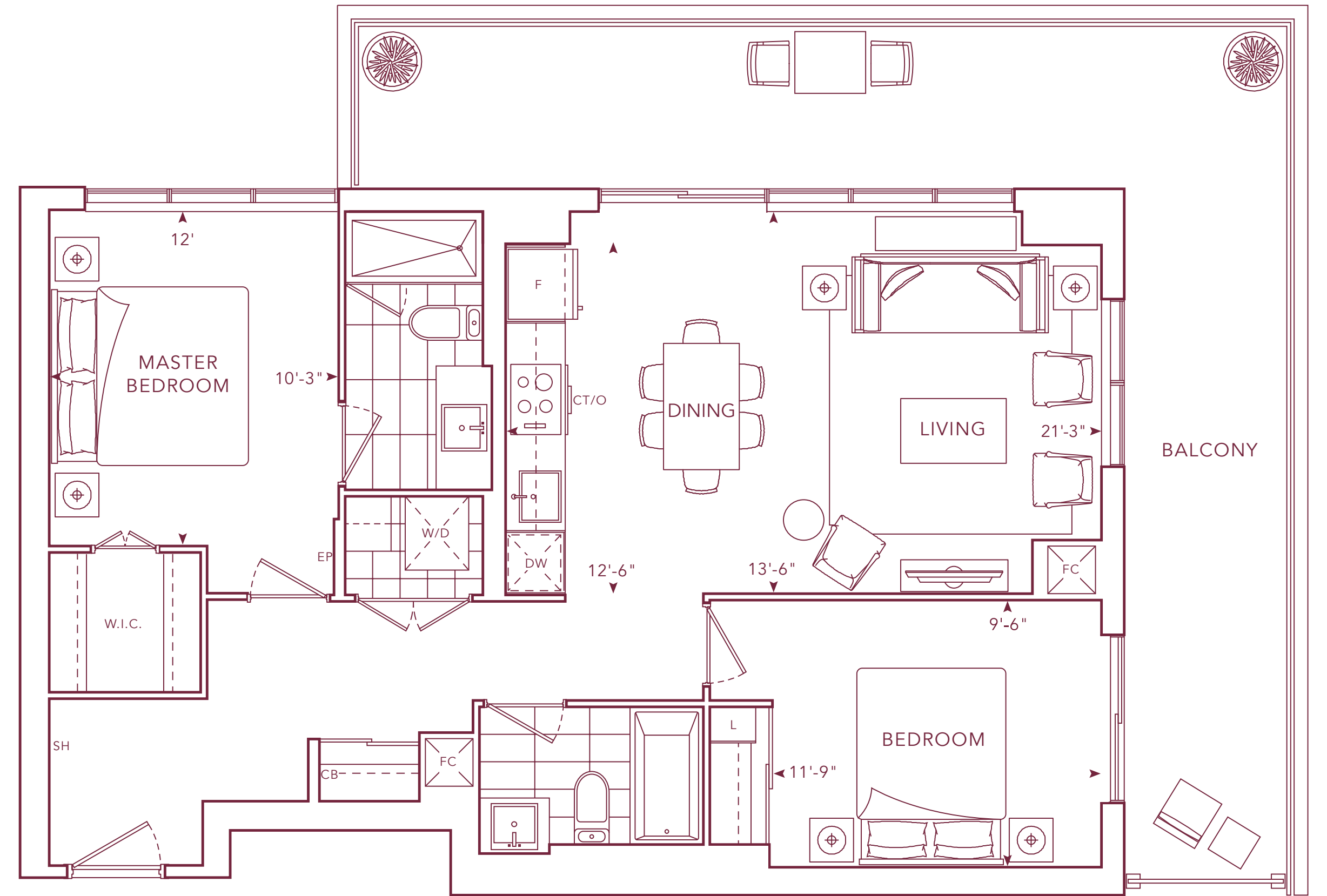
2 BEDROOMS

2 BATHROOMS



FLOOR

8, 10, 12, 14, 16, 18
20, 22, 24, 26

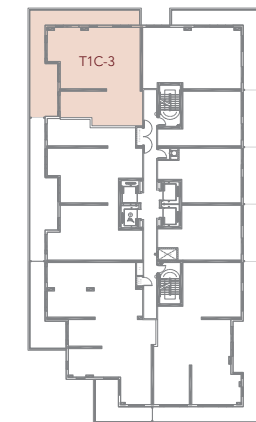


T1C-3

1,283 SQ.FT.

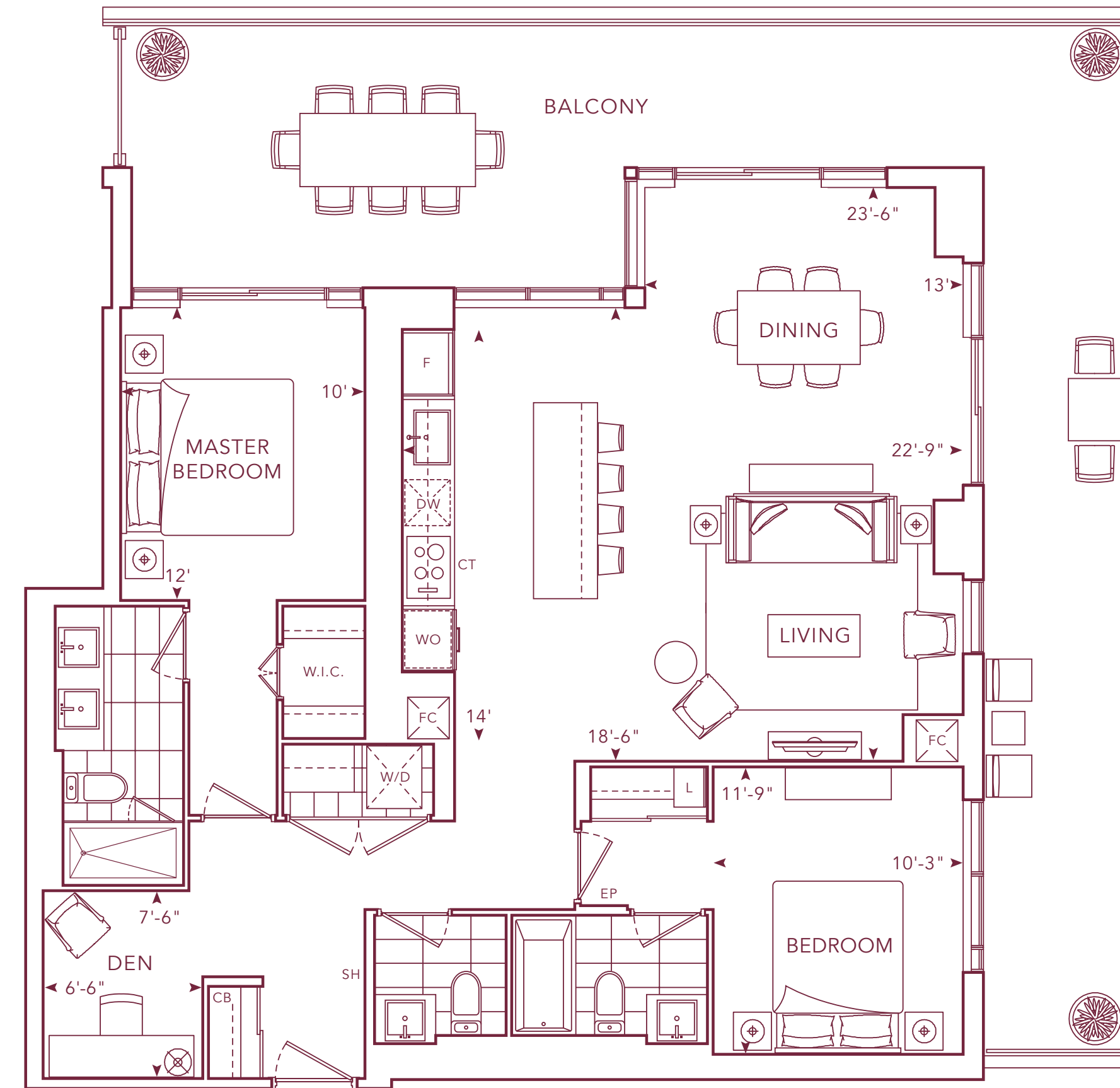
2 BEDROOMS+DEN

2.5 BATHROOMS



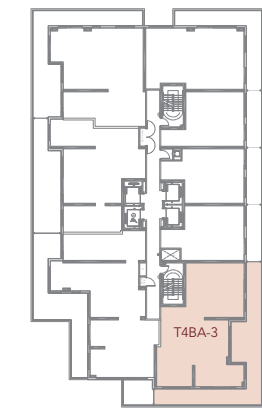
FLOOR

8, 10, 12, 14,
16, 18, 20, 22

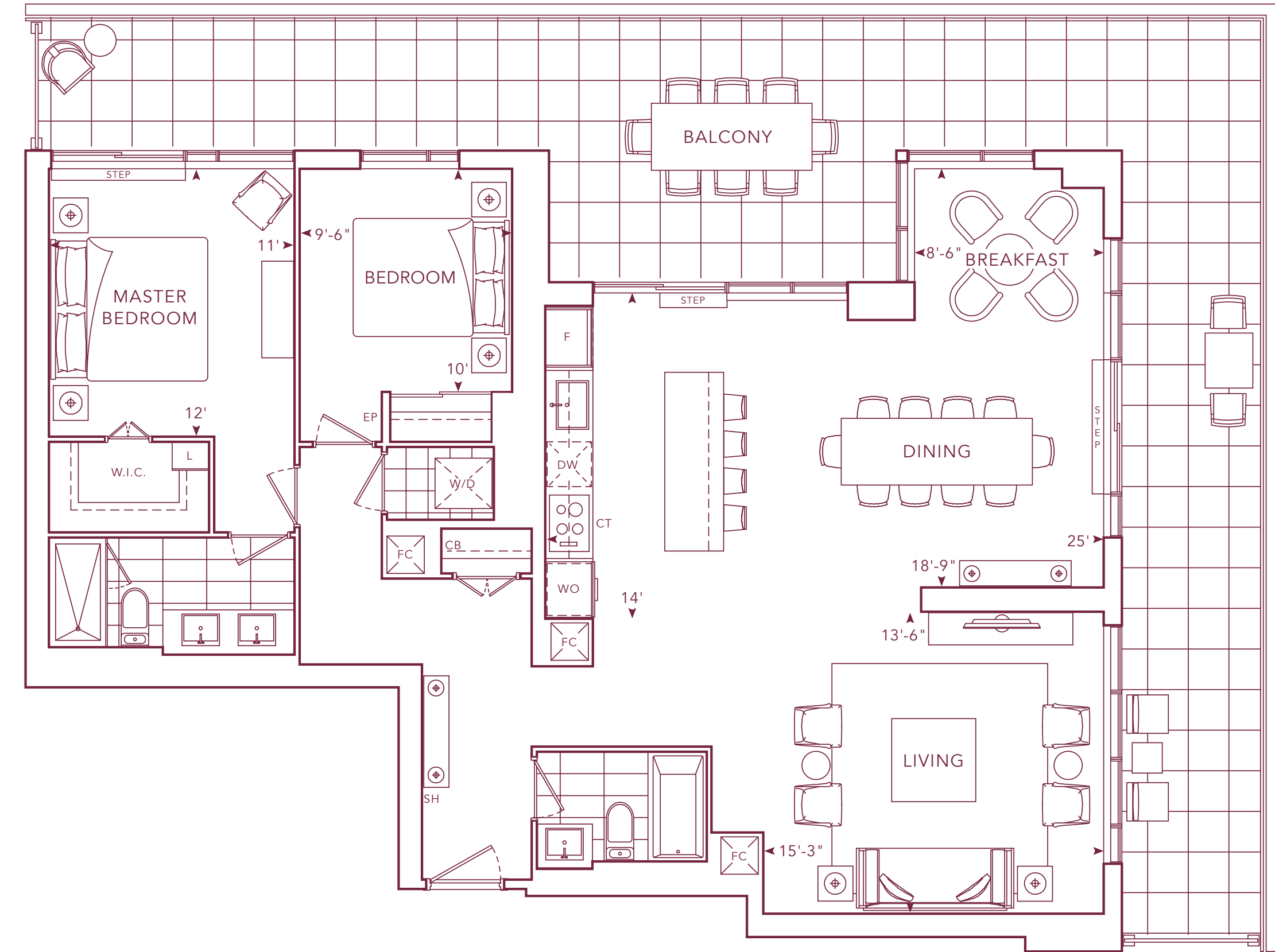


T4BA-3

1,403 SQ.FT.
2 BEDROOMS
2 BATHROOMS

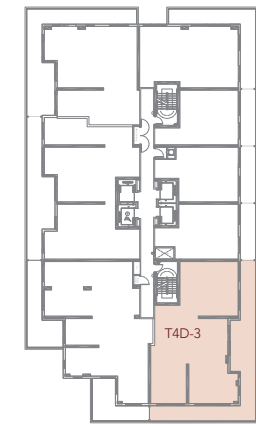


N
FLOOR
12

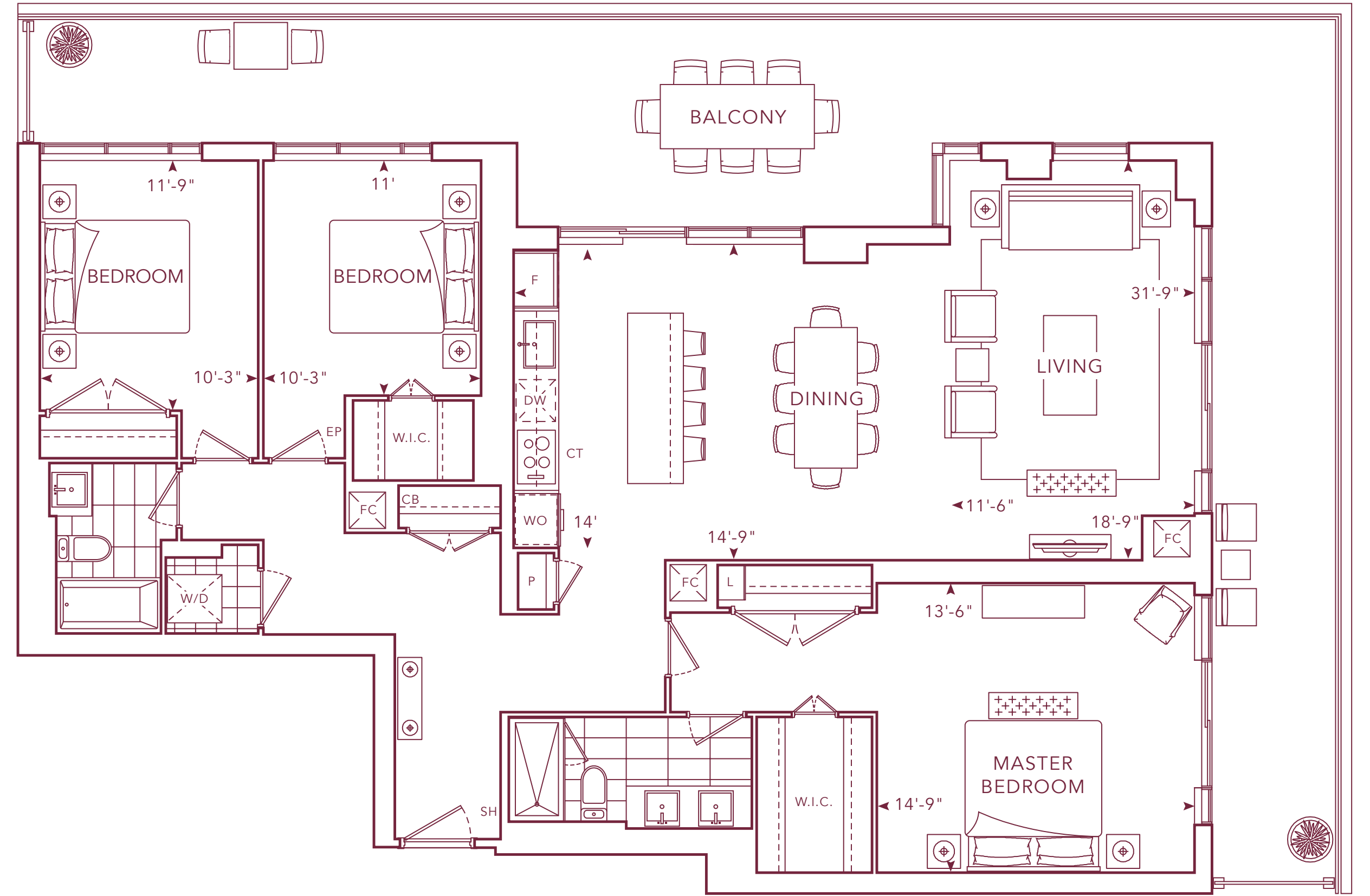


T4D-3

1,656 SQ. FT.
3 BEDROOMS
2 BATHROOMS



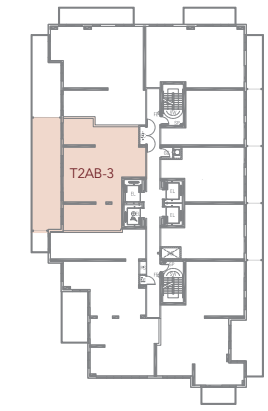
N
FLOOR
8, 10



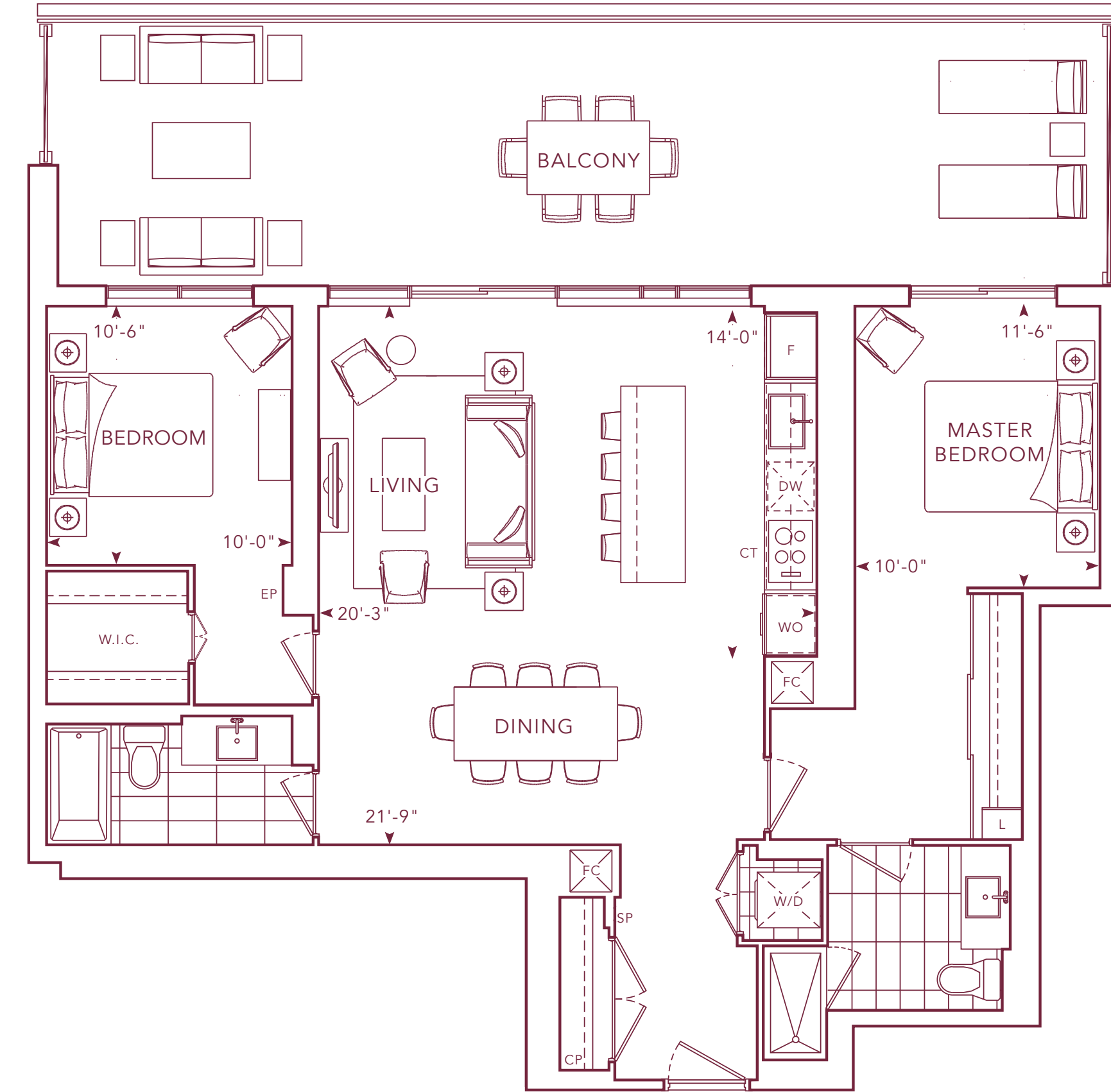
©Tridel 2019. ©Tridel, "D" design, Tridel Built for Life, Tridel Built for Life Design, and Tridel Built Green Built for Life are registered Trademarks of Tridel Corporation. Project names and logos are Trademarks of their respective owners. All rights reserved. Building and view not to scale. All dimensions are approximate and subject to normal construction variances. Dimensions may exceed the usable floor area. Sizes and specifications subject to change without notice. Actual usable floor space may vary from the stated floor area. Some features and finishes contained herein are upgrades or are for illustrative purposes only and may not be available. Furniture is displayed for illustration purposes only and does not necessarily reflect the electrical plan for the suite. Suites are sold unfurnished. Balcony and façade variations may apply, contact a sales representative for further details. Furniture, BBQs and planter locations on terraces are for illustration purposes only and subject to change. Illustrations are artist's concept only. Specifications subject to change without notice. E. & O.E. March 2019.

T2AB-3

1,174 SQ. FT.
2 BEDROOMS
2 BATHROOMS



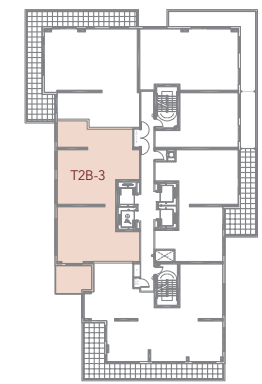
N
FLOOR
13 ~ 15



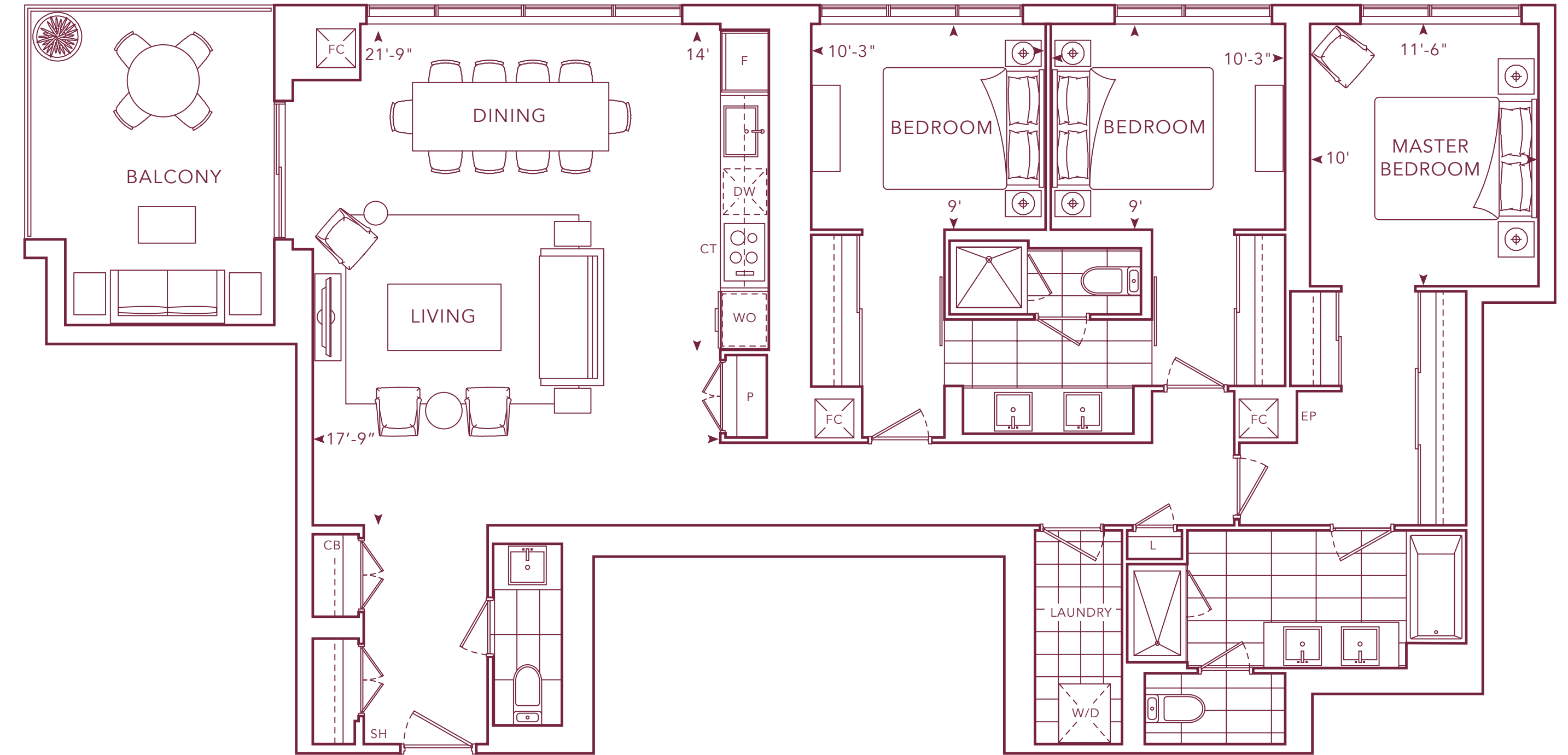
©Tridel 2019. "D" design, Tridel Built for Life, Tridel Built for Life Design, and Tridel Built Green Built for Life are registered Trademarks of Tridel Corporation. Project names and logos are Trademarks of their respective owners. All rights reserved. Building and view not to scale. All dimensions are approximate and subject to normal construction variances. Dimensions may exceed the useable floor area. Sizes and specifications subject to change without notice. Actual usable floor space may vary from the stated floor area. Some features and finishes contained herein are upgrades or are for illustrative purposes only and may not be available. Furniture is displayed for illustration purposes only and does not necessarily reflect the electrical plan for the suite. Suites are sold unfurnished. Balcony and façade variations may apply, contact a sales representative for further details. Furniture, BBQs and planter locations on terraces are for illustration purposes only and subject to change. Illustrations are artist's concept only. Specifications subject to change without notice. E. & O.E. March 2019.

T2B-3

1,564 SQ. FT.
3 BEDROOMS
2.5 BATHROOMS

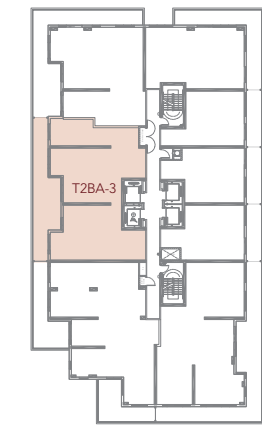


N
FLOOR
26 ~ 31

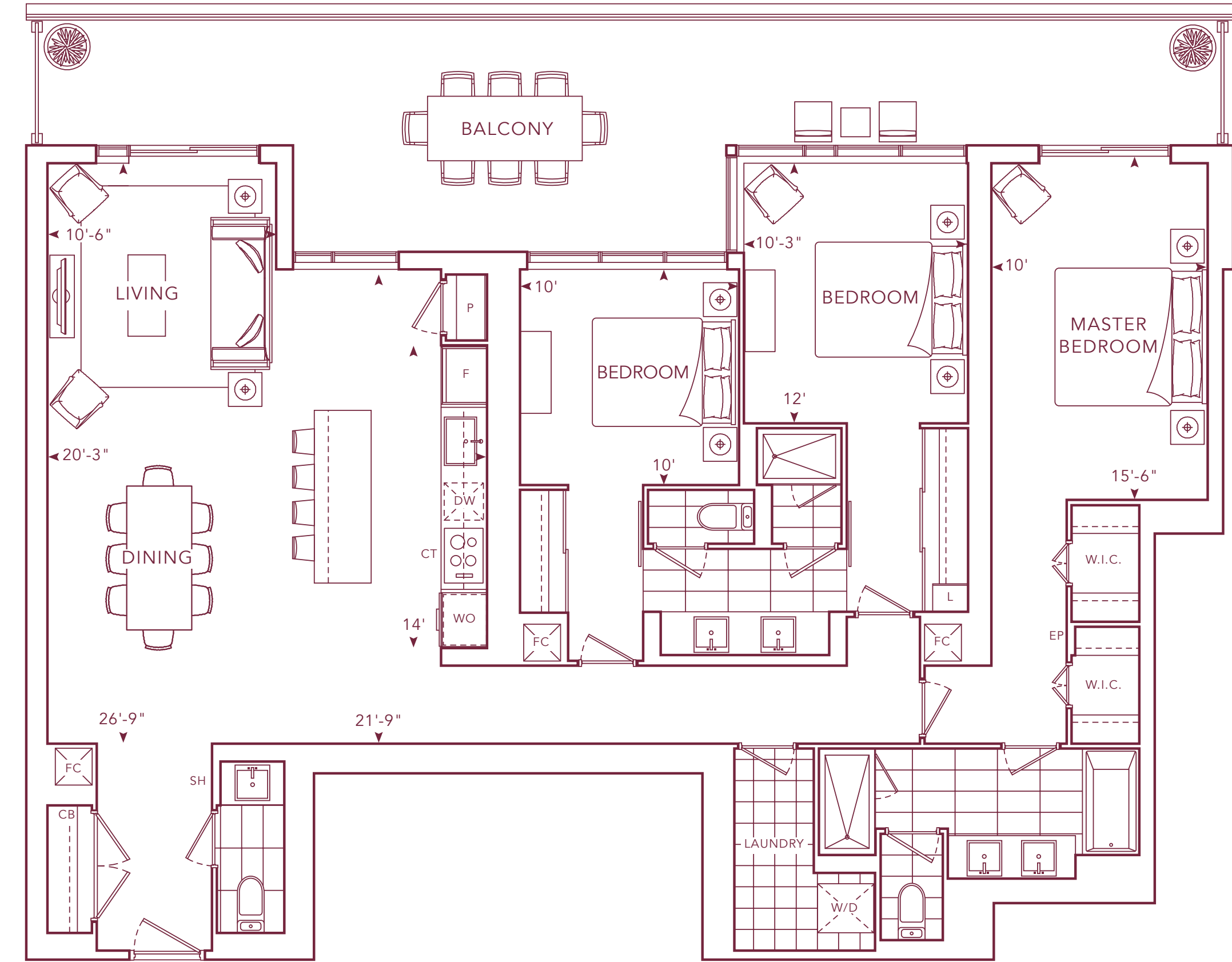


T2BA-3

1,724 SQ. FT.
 3 BEDROOMS
 2.5 BATHROOMS

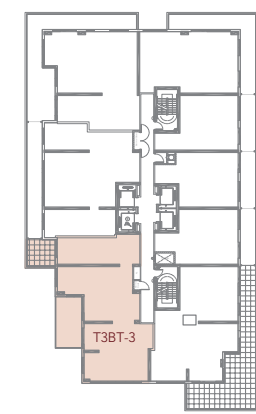


N
 FLOOR
 7 ~ 11

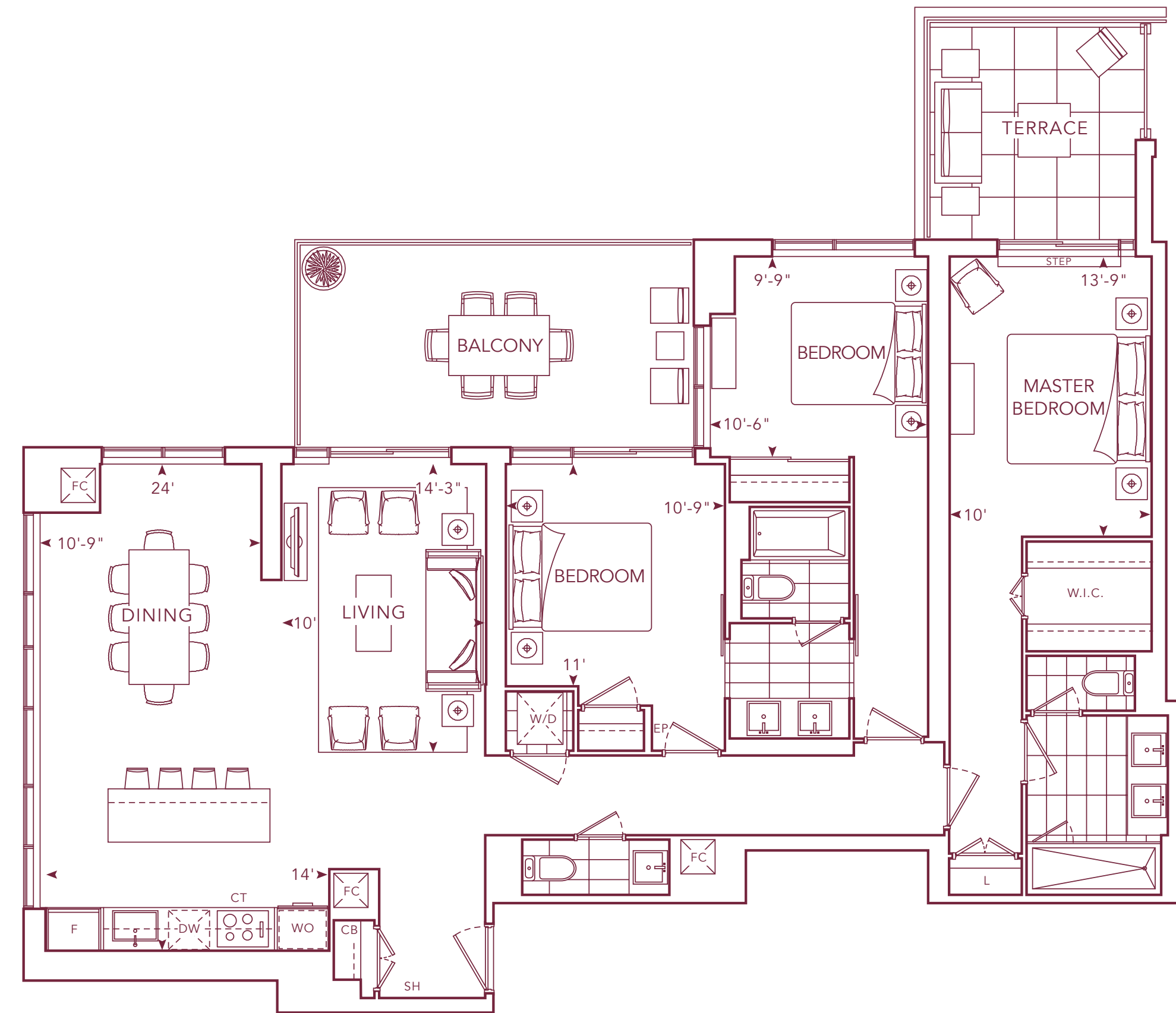


T3BT-3

1,586 SQ. FT.
3 BEDROOMS
2.5 BATHROOMS



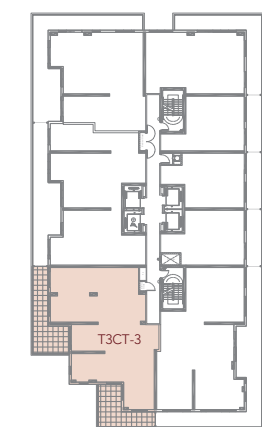
N
FLOOR
16



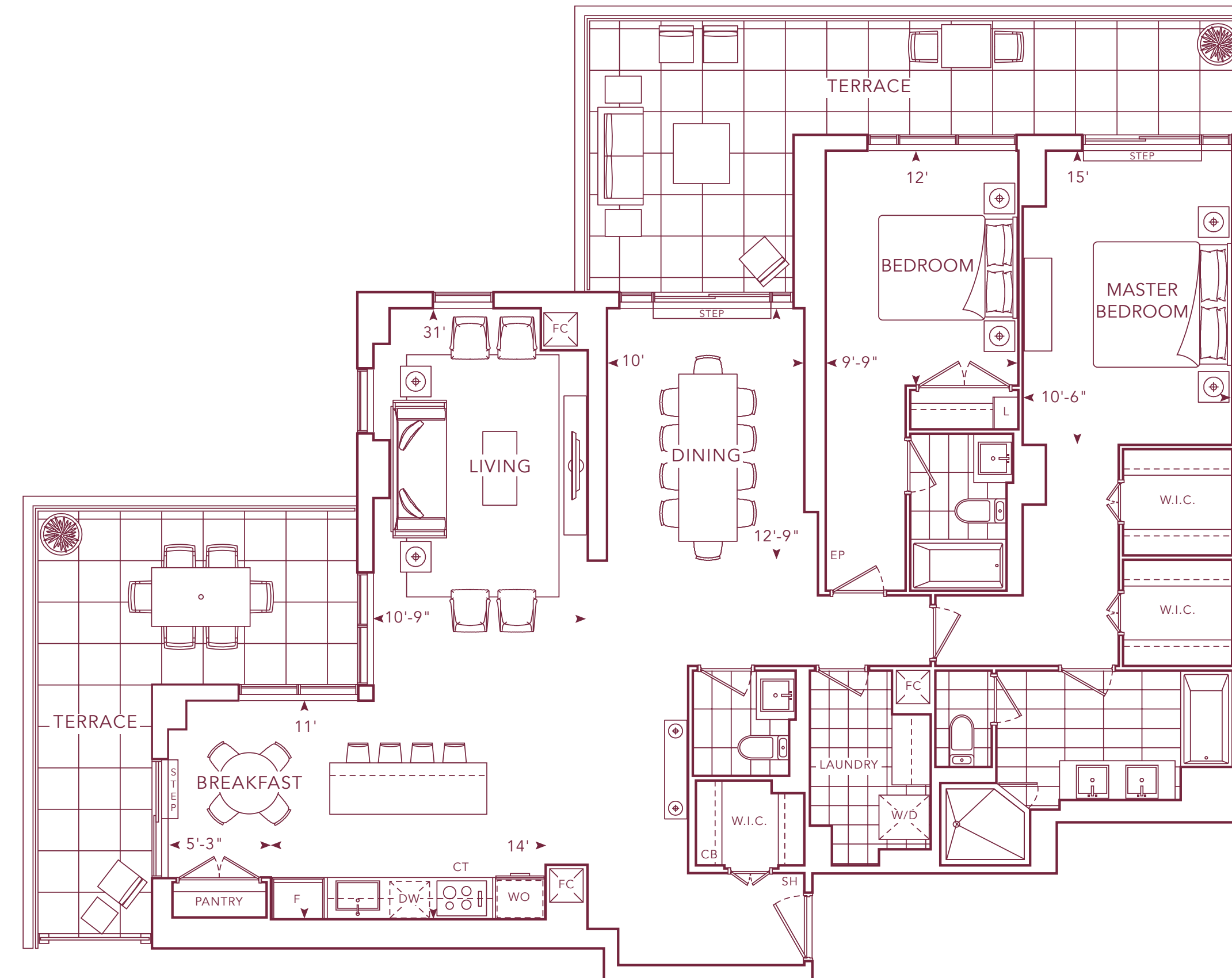
©Tridel 2019. "D" design, Tridel Built for Life, Tridel Built for Life Design, and Tridel Built Green Built for Life are registered Trademarks of Tridel Corporation. Project names and logos are Trademarks of their respective owners. All rights reserved. Building and view not to scale. All dimensions are approximate and subject to normal construction variances. Dimensions may exceed the usable floor area. Sizes and specifications subject to change without notice. Actual usable floor space may vary from the stated floor area. Some features and finishes contained herein are upgrades or are for illustrative purposes only and may not be available. Furniture is displayed for illustration purposes only and does not necessarily reflect the electrical plan for the suite. Suites are sold unfurnished. Balcony and façade variations may apply, contact a sales representative for further details. Furniture, BBQs and planter locations on terraces are for illustration purposes only and subject to change. Illustrations are artist's concept only. Specifications subject to change without notice. E. & O.E. March 2019.

T3CT-3

1,728 SQ.FT.
 2 BEDROOMS
 2.5 BATHROOMS



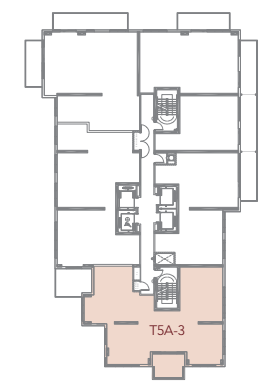
N
 FLOOR
 10



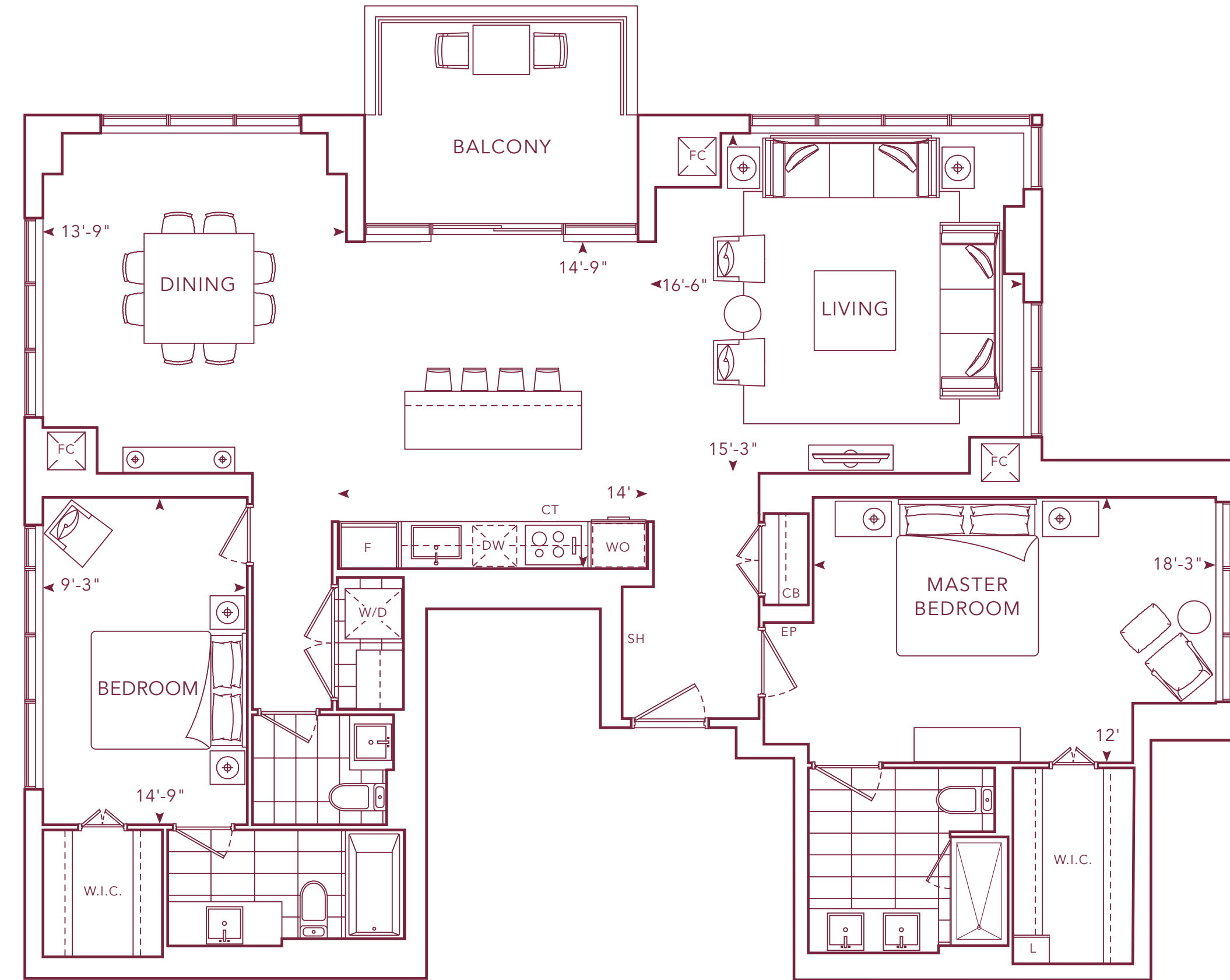
©Tridel 2019. ©Tridel, "D" design, Tridel Built for Life, Tridel Built for Life Design, and Tridel Built Green Built for Life are registered Trademarks of Tridel Corporation. Project names and logos are Trademarks of their respective owners. All rights reserved. Building and view not to scale. All dimensions are approximate and subject to normal construction variances. Dimensions may exceed the useable floor area. Sizes and specifications subject to change without notice. Actual useable floor space may vary from the stated floor area. Some features and finishes contained herein are upgrades or are for illustrative purposes only and may not be available. Furniture is displayed for illustration purposes only and does not necessarily reflect the electrical plan for the suite. Suites are sold unfurnished. Balcony and façade variations may apply, contact a sales representative for further details. Furniture, BBQs and planter locations on terraces are for illustration purposes only and subject to change. Illustrations are artist's concept only. Specifications subject to change without notice. E. & O.E. March 2019.

T5A-3

1,659 SQ. FT.
2 BEDROOMS
2.5 BATHROOMS



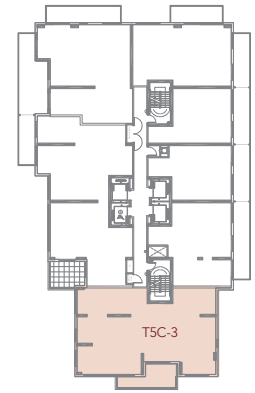
N
FLOOR
28 ~ 31



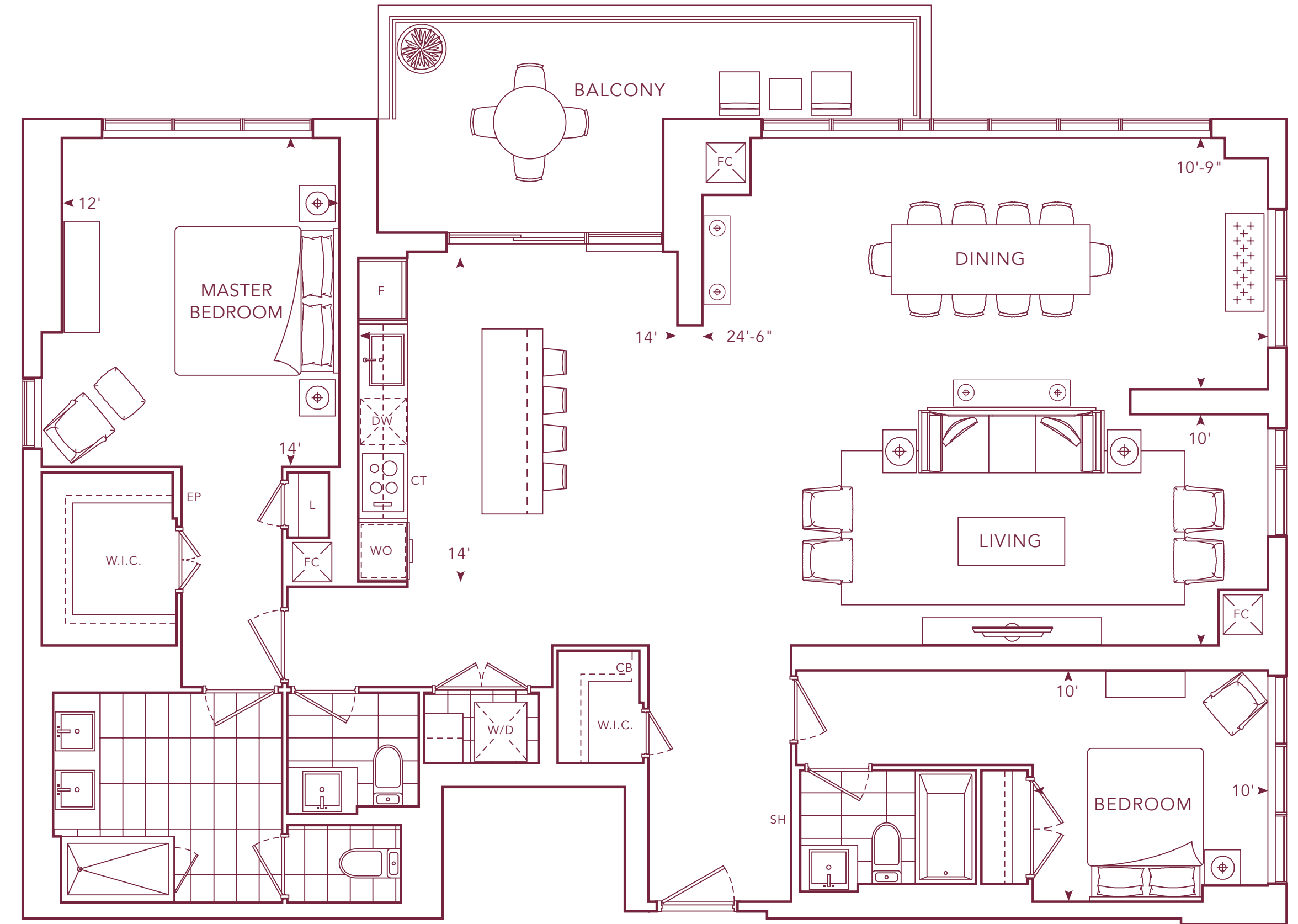
©Tridel 2019. "D" design, Tridel Built for Life, Tridel Built for Life Design, and Tridel Built Green Built for Life are registered Trademarks of Tridel Corporation. Project names and logos are Trademarks of their respective owners. All rights reserved. Building and view not to scale. All dimensions are approximate and subject to normal construction variances. Dimensions may exceed the useable floor area. Sizes and specifications subject to change without notice. Actual useable floor space may vary from the stated floor area. Some features and finishes contained herein are upgrades or are for illustrative purposes only and may not be available. Furniture is displayed for illustration purposes only and does not necessarily reflect the electrical plan for the suite. Suites are sold unfurnished. Balcony and façade variations may apply, contact a sales representative for further details. Furniture, BBQs and planter locations on terraces are for illustration purposes only and subject to change. Illustrations are artist's concept only. Specifications subject to change without notice. E. & O.E. March 2019.

T5C-3

1,772 SQ.FT.
2 BEDROOMS
2.5 BATHROOMS

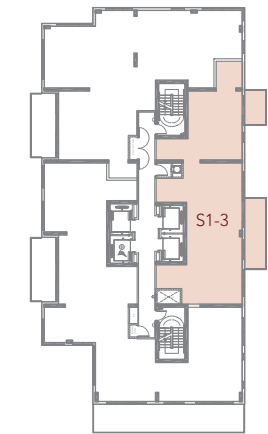


N
FLOOR
22 ~ 25

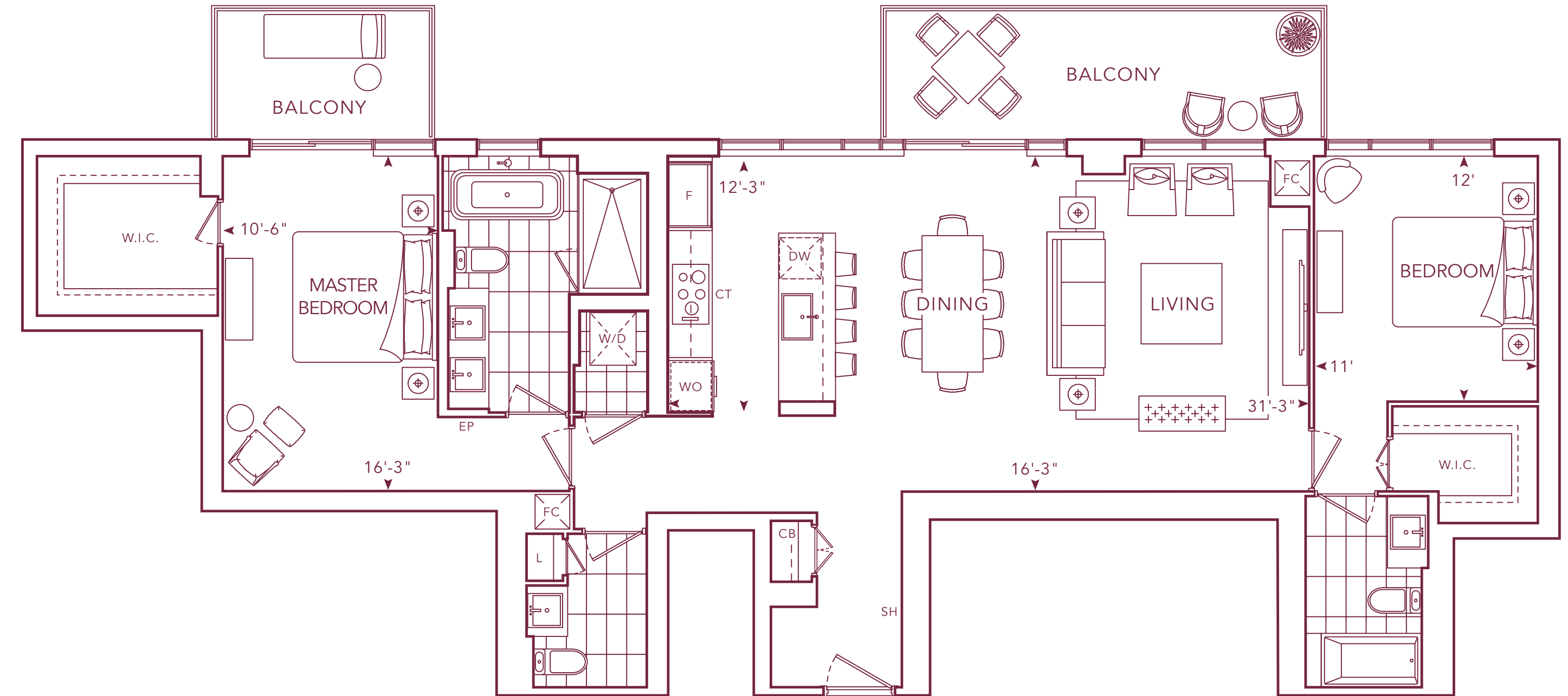


S1-3

1,519 SQ. FT.
2 BEDROOMS
2.5 BATHROOMS

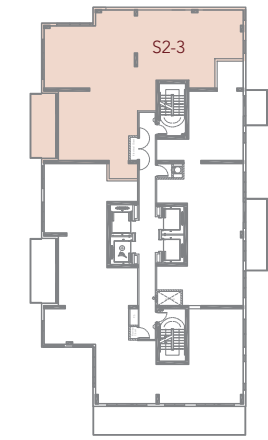


N
FLOOR
33 ~ 39

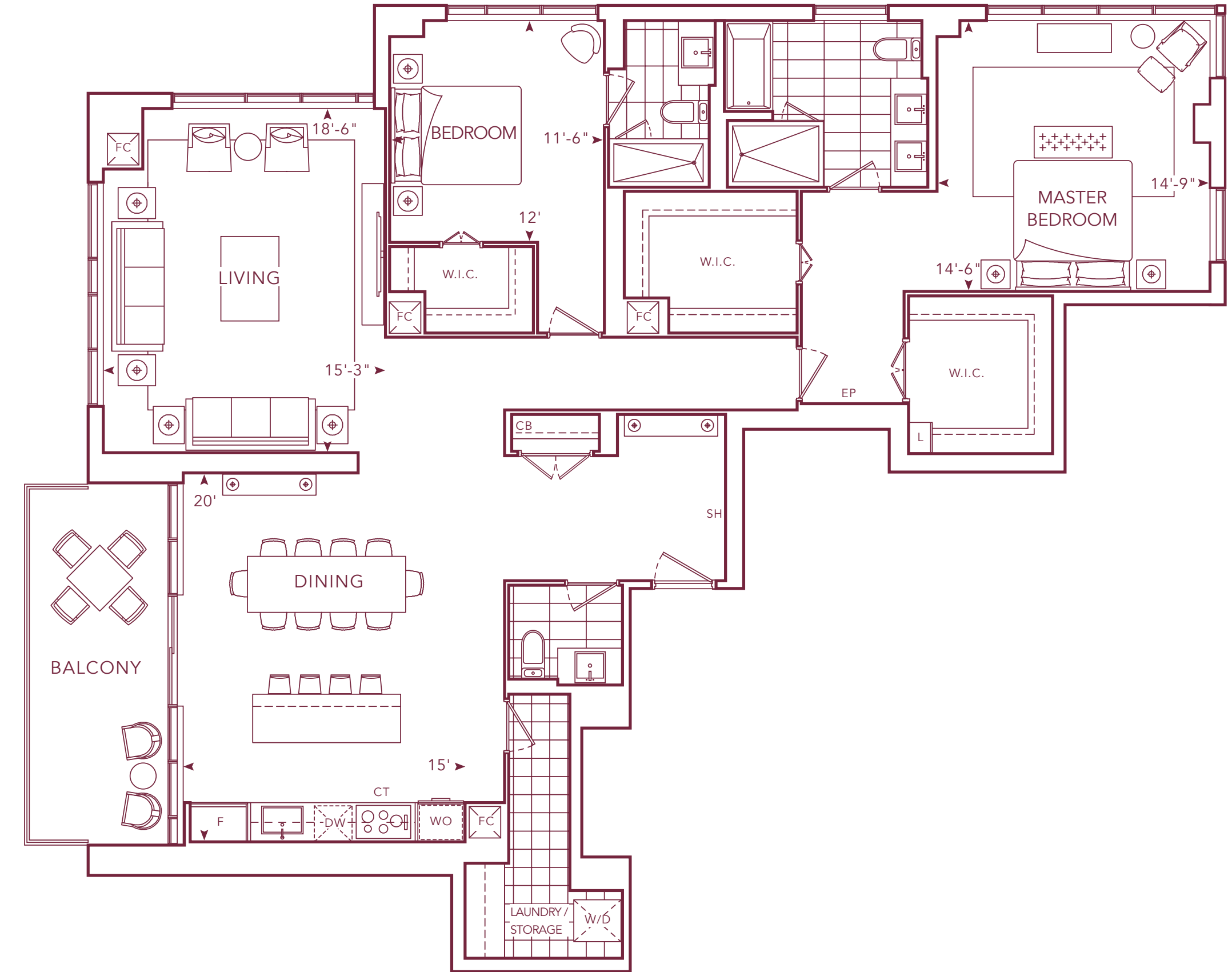


S2-3

1,978 SQ.FT.
2 BEDROOMS
2.5 BATHROOMS



N
FLOOR
33 ~ 39

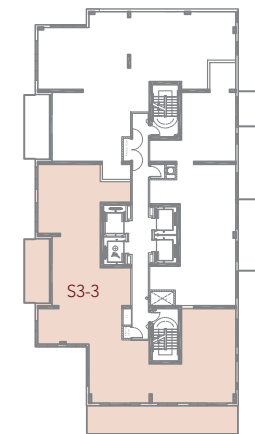


S3-3

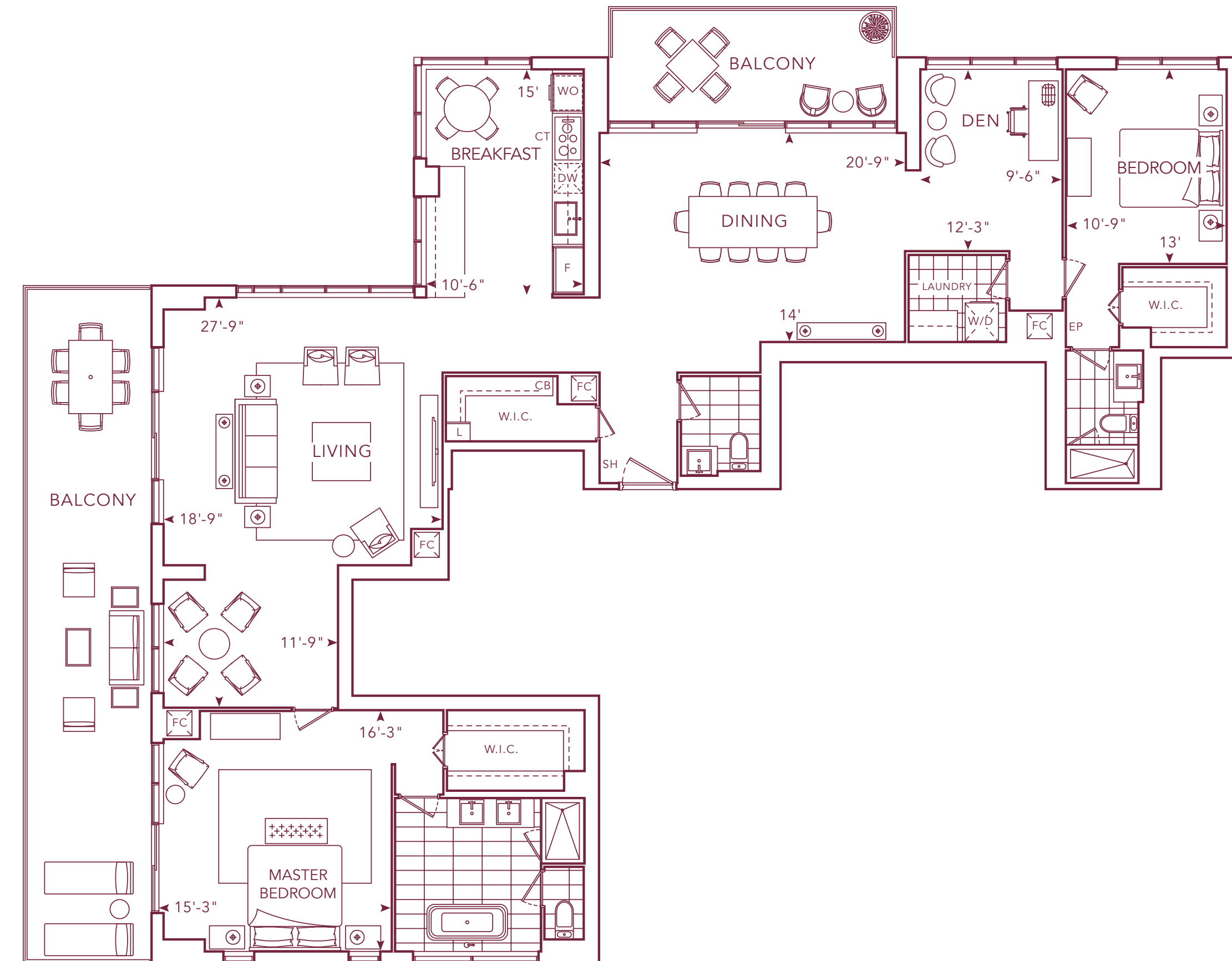
2,346 SQ.FT.

2 BEDROOMS+DEN

2.5 BATHROOMS



N
FLOOR
33 ~ 39



FEATURES AND FINISHES



SIGNATURE COLLECTION

GENERAL

- 24-hour concierge
- Hybrid fibre 250 high-speed Internet service
- Easy and convenient living with the Tridel Connect Smart Home system
- 9' and 10' ceilings with smooth finish
- Two-storey townhome suites with stairs will feature contemporary wood staircases with metal pickets and handrail

FLOOR COVERINGS

- Engineered hardwood floating floor with acoustic underlay
- Porcelain or natural stone floor tile in master ensuite and powder room(s)
- Porcelain floor tile in laundry, storage areas and other bathroom(s)

CHEF-INSPIRED KITCHENS

- Contemporary laminate and/or wood composite cabinetry including upper cabinets with valance
- Double square edge granite or engineered quartz countertop with matching slab backsplash
- Appliances
 - Miele, Energy Star high efficiency, fully integrated paneled dishwasher
 - Miele, Energy Star fully integrated paneled refrigerator
 - Pull-out hood fan
 - Miele ceramic cooktop
 - Miele wall oven
 - Miele stainless steel built-in microwave

SPA-INSPIRED BATHROOMS

- Vanity cabinetry including single polished square edge natural stone or quartz countertop with white basin
- Frameless glass shower enclosure with chrome hardware
- Wide spread chrome faucet in master ensuite and powder room
- Single lever faucet in all other bathroom(s)
- Porcelain or natural stone tiles in shower or tub enclosure and on vanity wall in master ensuite

LAUNDRY

- Stacked or side-by-side front loading white dryer and Energy Star high efficiency, front loading white washer (complete with stainless steel flexible hoses)

All features and finishes are subject to change without notice. Refer to Schedule B for exact details. Specifications vary by suite. E.&O.E. March 2019.

