

The background is a solid teal color with several overlapping, semi-transparent lines of varying shades of teal. These lines are thick and have rounded ends, creating a complex, abstract pattern that resembles a stylized 'G' or a series of interconnected paths. The lines are positioned diagonally across the frame, with some crossing each other.

# GALLERIA

ON THE PARK

GALLERIA  
ON THE PARK





**#LiveAsOne**

**A New Dupont City  
Park Community**

**ELADCANADA**



**06** Live, Work and Grow  
As One **12** Live **17** Play  
**28** Premium Retail **35**  
Walk To Work **39** Access  
Your City **48** Back In  
The Day **58** Discovering  
The New Dupont **67**  
Neighbourhood Amenities  
**94** School Days **99**  
The Buzz on Geary **110**  
The Flavours Of Portugal  
**116** The Developer



# Live, Work And Grow As One





Leading the new Dupont's ever-expanding, vibrant cultural scene, **Galleria on the Park** is Toronto's most inspired new neighbourhood of condominiums, shops and places to gather, all located next to an incredible eight-acre park.

Galleria is everything we love about Toronto all in one new neighbourhood, beautifully mirroring the diversity that continually brings fresh energy to our city.

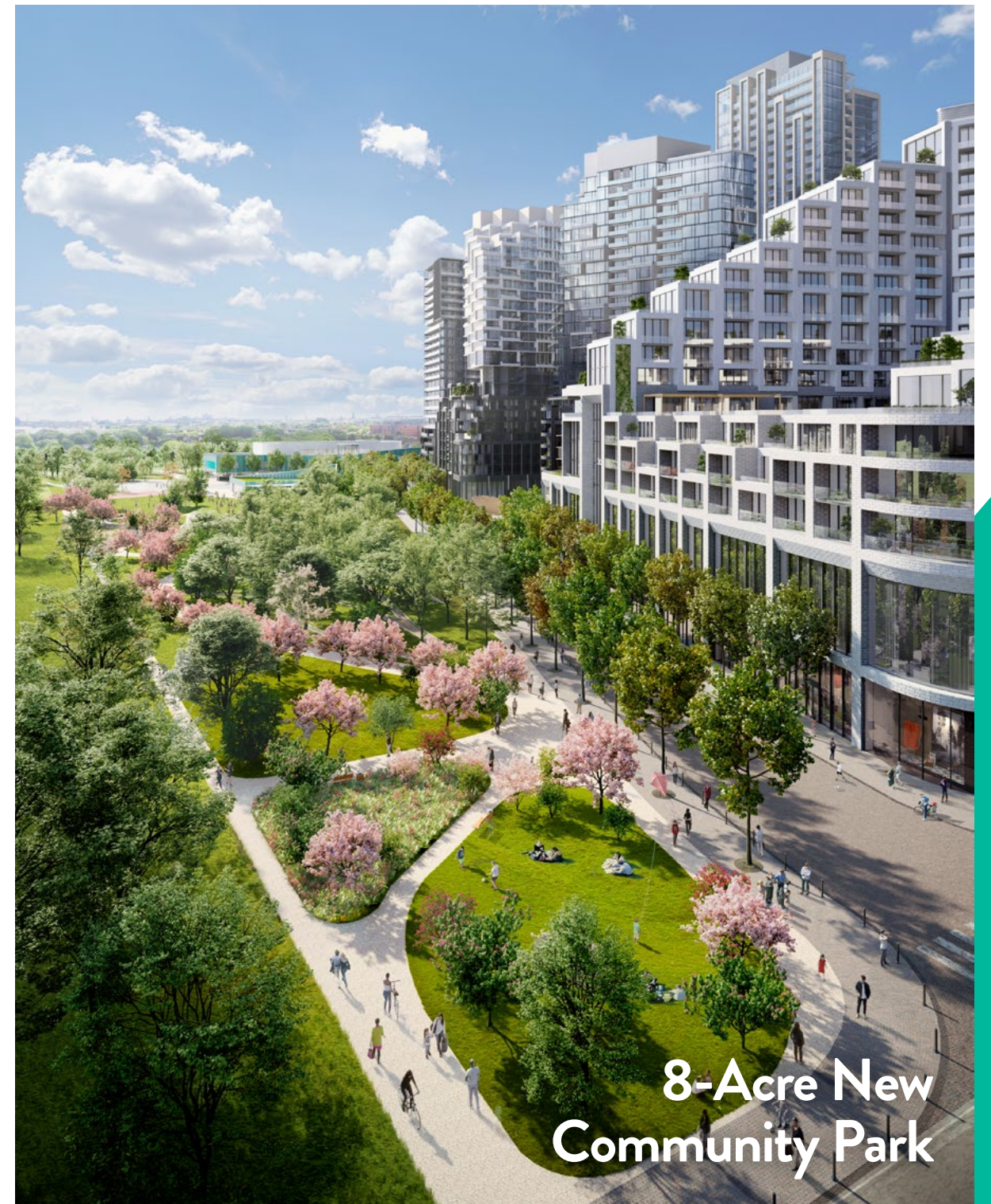
#### Master-planned through collaboration

Warm and welcoming to the surrounding community and the entire city, Galleria on the Park started as the seed of an idea and blossomed into a ground-breaking master plan. People already living in the neighbourhood were invited to participate in numerous working sessions.

The result is that cherished and necessary components of the existing site will be retained and revitalized, complementing the sophisticated new additions. Galleria on the Park is truly a community envisioned by a community.

#### Large, new community centre & park

Encompassing the most enlightened urban planning features of this century, Wallace-Emerson Park will be enlarged to nearly 8 acres, anchored by a brand-new, 95,000 sq.ft. community centre — one of the largest in the city.



**8-Acre New  
Community Park**

#### Toronto Fun Facts

Source: Statistics Canada

COUNTRIES OF ORIGIN

**230**

LANGUAGES SPOKEN

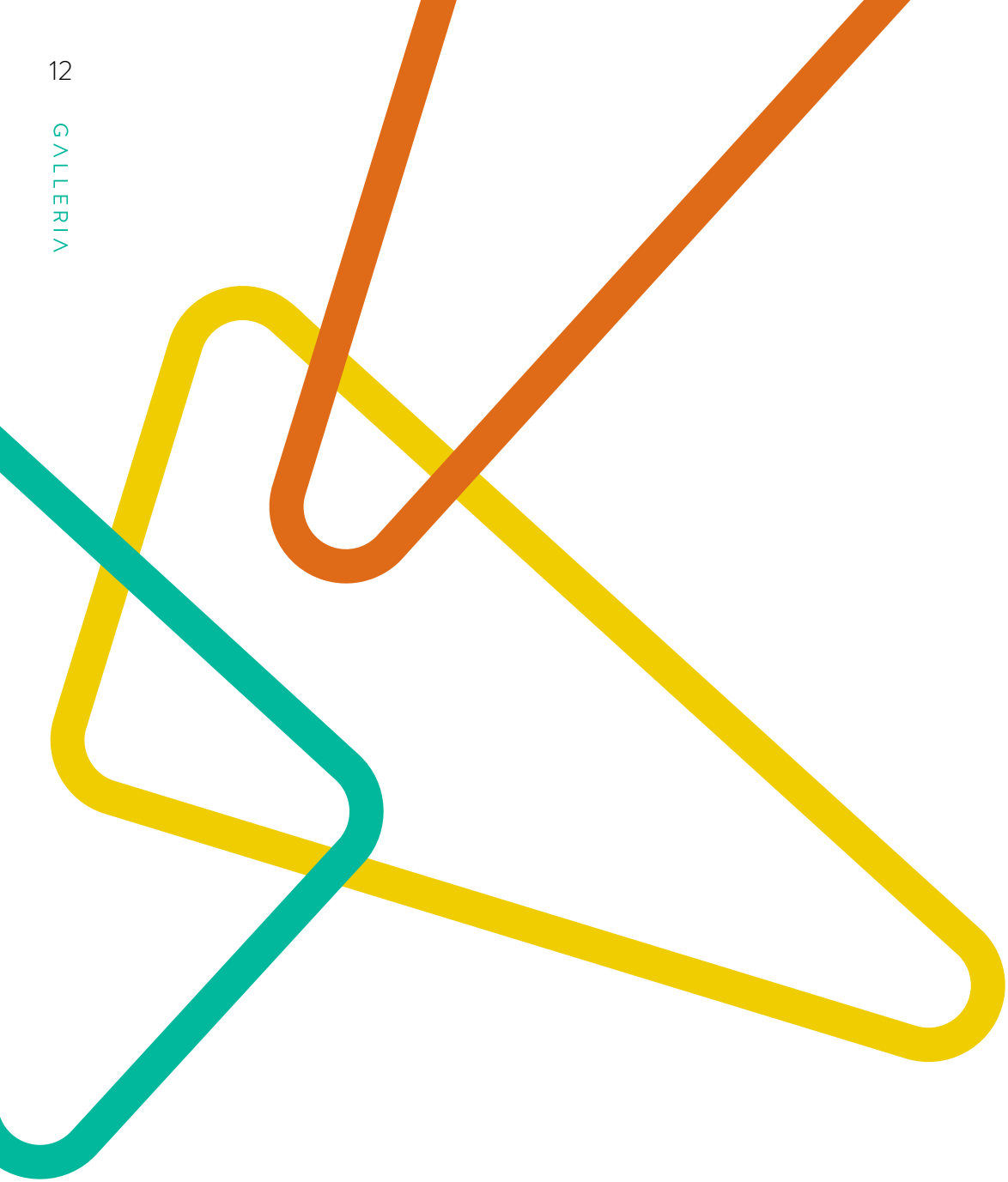
**140**





An Inspired New  
Neighbourhood





# Live







Points Plaza, located at the heart of Galleria on the Park, will be a gathering space for everyone. Featuring restaurants and stores, with patios spilling out onto the sidewalk, it will foster a dynamic, active and cheerful scene. Look forward to outdoor dining, farmers' markets, street vendors and street festivals.

A large green park with a massive, state-of-the-art community centre; walkable, generous sidewalks lined with trees and plants; and colourfully patterned streets create an ideal environment for urban living at Galleria on the Park.

With room for almost 6,000 people to live as one community in eight architecturally distinct buildings, Galleria on the Park comprises condominium suites and rental suites – with their own lobbies and dedicated property management. Galleria offers a premium lifestyle and convenient access to on-site creative office spaces and high-quality retail outlets.

The eight residential buildings offer plenty of choice, including studio, one-bedroom, two-bedroom, and three-bedroom suites that offer sophisticated, modern design, a leading-edge technology package and all the amenities you could ever imagine right outside your door.

#### A connected community

Galleria's wide, open, pedestrian-friendly streets and pedestrian mews criss-cross the new district, connecting to the established family neighbourhoods around it. With area residents easily able to come and go from the park, the community centre, outdoor gathering spaces and amazing shops and retailers, Galleria is a safe and welcome connection point for the entire neighbourhood – and visitors from all over the city.

Cyclists have top priority, too. It's easy to get to and from Galleria along cycling routes such as the bike lanes on Bloor Street, and the new cycling loop in the park.

#### Galleria Fun Facts

BIKE PARKING SPACES

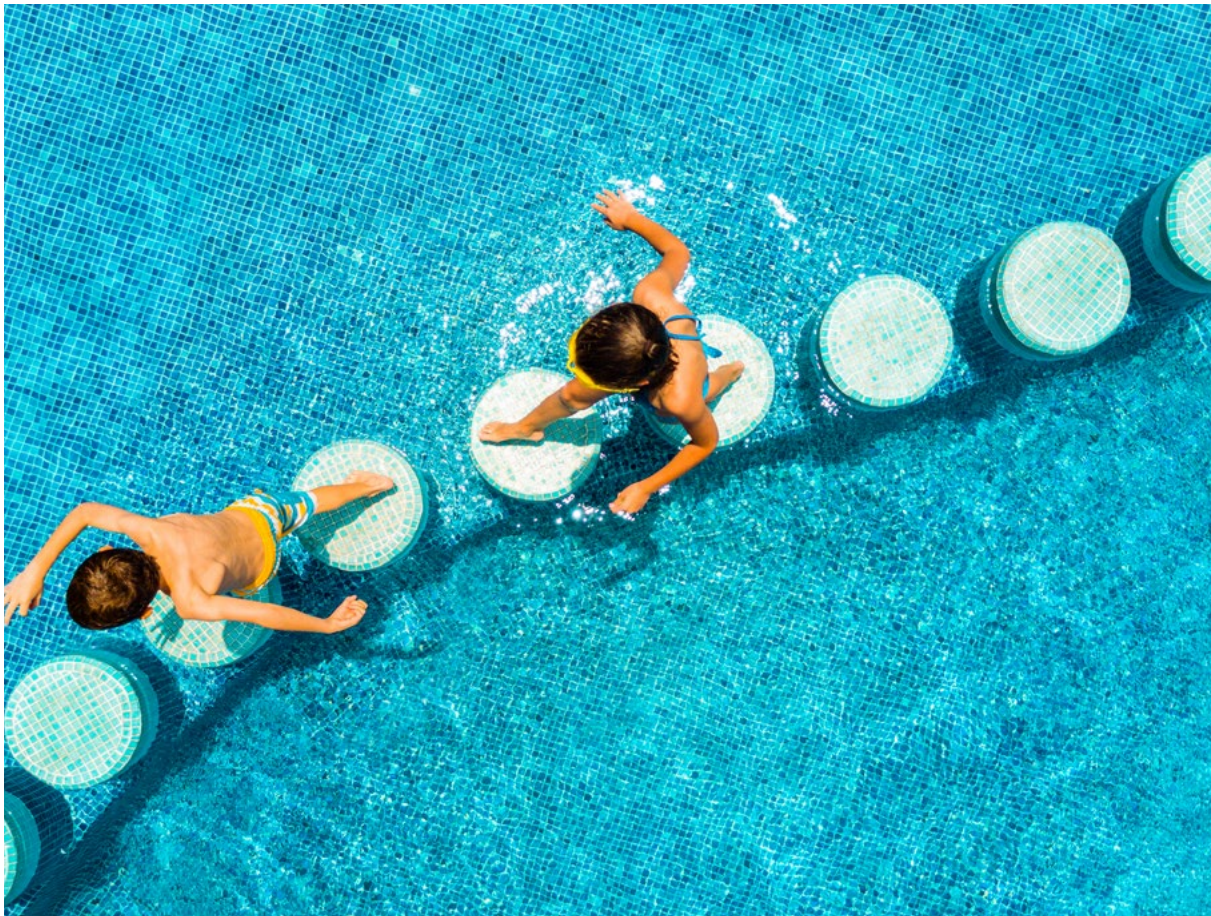
3,595





**Play**





For decades, the Wallace-Emerson Community Centre and park on the Galleria site have attracted area residents looking for fun and leisure activities.

Now Galleria on the Park offers a greatly enhanced experience at the completely new, reimagined community centre and park – both of which will be a popular destination for the entire city of Toronto.







The new 95,000 sq.ft. Wallace-Emerson Community Centre\* will be one of the largest in Toronto, offering a variety of spaces, indoor and outdoor options for play, and ways to rejuvenate and socialize.







Community Centre planned for Galleria on the Park.



**Bigger and better**

Along with a gym, multi-purpose rooms, community kitchen, outdoor skating trail, swimming pool, dance studio, running track, and full fitness facilities, the new community centre will feature a child care centre and playground.

**A park with heart**

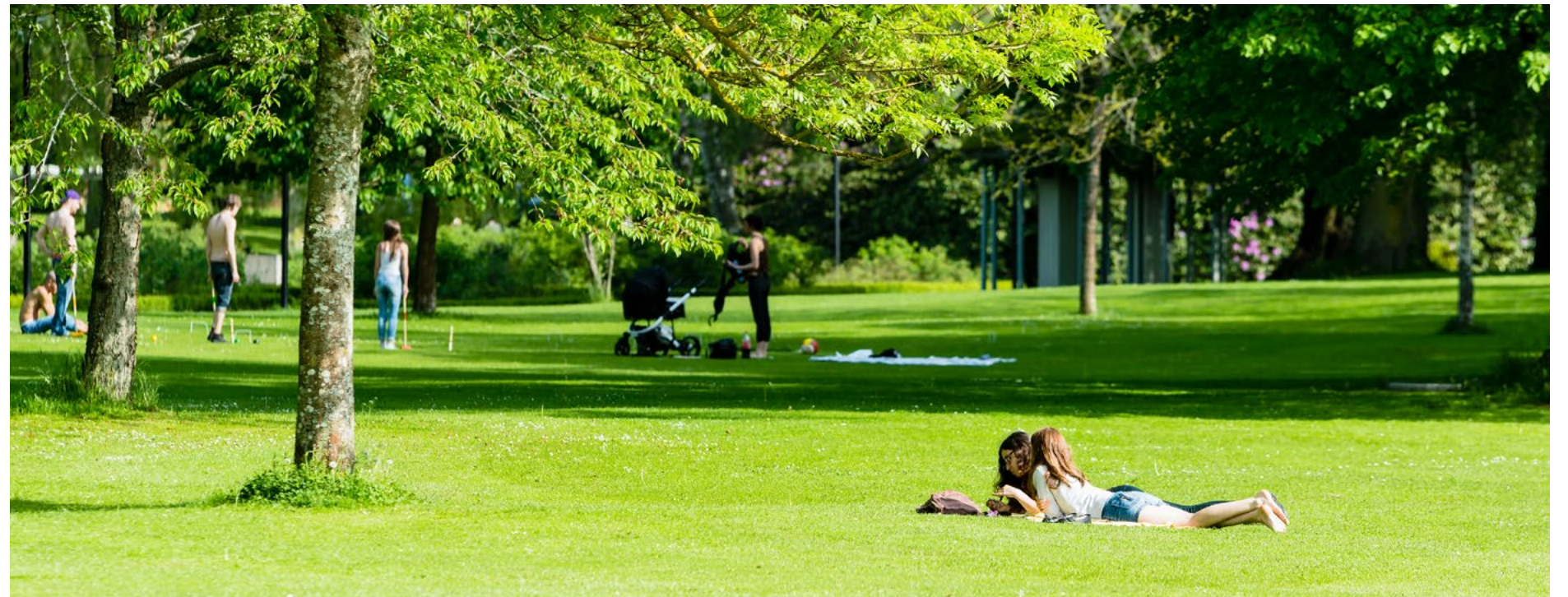
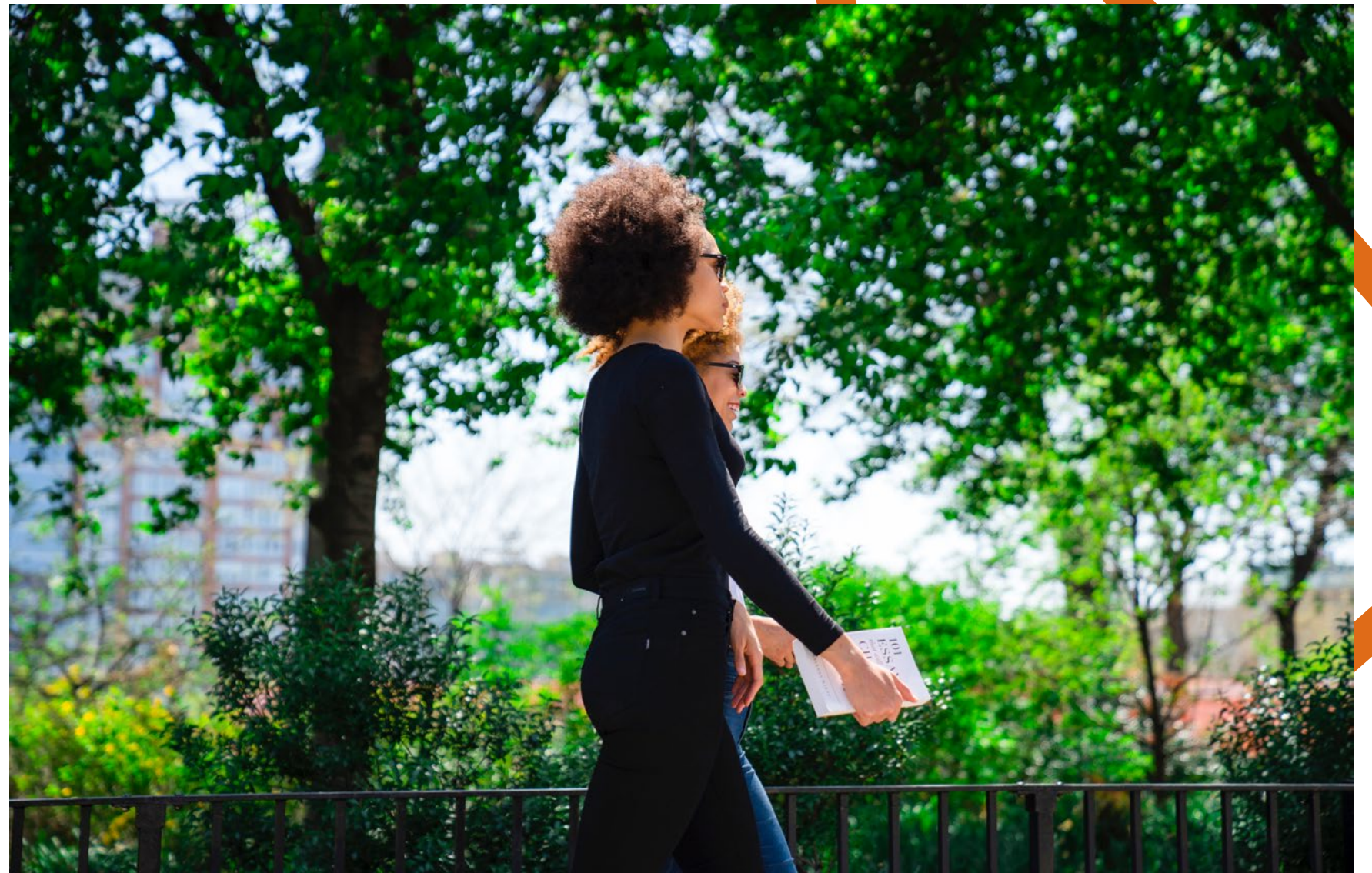
You'll want to spend a lot of time in the inviting new Wallace-Emerson Park. Whether simply relaxing under the trees, hosting a picnic, or playing ball with the kids, you'll love this large and revamped green space, designed to maximize sunlight and south views of the Toronto skyline.

**A park for everyone, it's apportioned into three multi-functional spaces\*:**

**The Community Heart** surrounds the new community centre at the west end of the park, and features a BMX/skateboard park, a multi-use sport court, and skating pad, along with a skating trail.

**The Play Heart**, at the centre of the park, is a multi-use green field with a hill that invites all Torontonians of all ages to gather and play.

**The Nature Heart**, at the east end of the park has a treed canopy and meandering pathways for wandering and relaxing in a natural setting.







**#LiveAsOne**





# Premium Retail





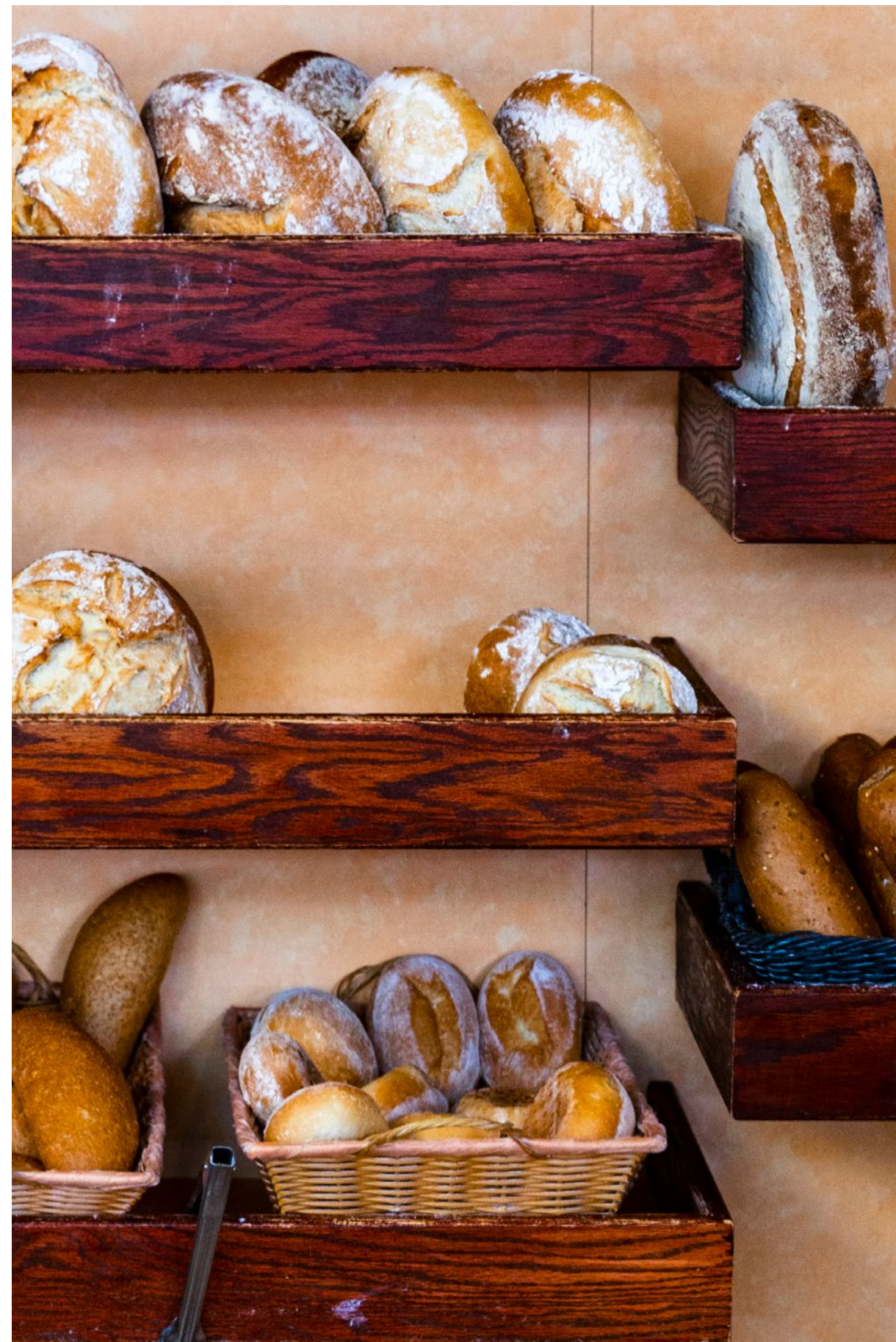
At Galleria on the Park, **convenience and creativity artfully merge at The Mews**, a European-style pedestrian-only shopping street. In total, **Galleria boasts close to 300,000 sq.ft. of retail space, with a vibrant range of shops and services**, including convenient retail and unique, one-of-a-kind boutiques and artisan shops — mirroring the spirit of the new Dupont.

Grab a coffee at a café just steps from your home. Meet a friend for ice cream on a patio. Or shop for a new outfit for that party you're attending on the weekend. No matter what you're looking for, you'll find it at Galleria's exclusive retail venue.

#### Galleria Fun Facts

SQ. FT. OF RETAIL SPACE

# 300,000







Coffee House





# Walk to Work



Imagine stepping out your door,  
picking up a latte at your favourite café  
just around the corner, and within five  
minutes, arriving at your office.

At Galleria on the Park, opportunities  
to change your work life abound.

Almost 20,000 sq.ft. of open, airy  
workspaces will attract the creative  
class and tech entrepreneurs of  
Toronto. Professional offices, studios  
and flex spaces will offer enriched  
employment opportunities to Galleria  
residents and anyone looking for an  
inspiring place to work.

Galleria on the Park brings it all  
together in an exhilarating work-  
life balance that frees up your  
commuting time and creates a  
comfortable schedule for focusing  
on what matters most.



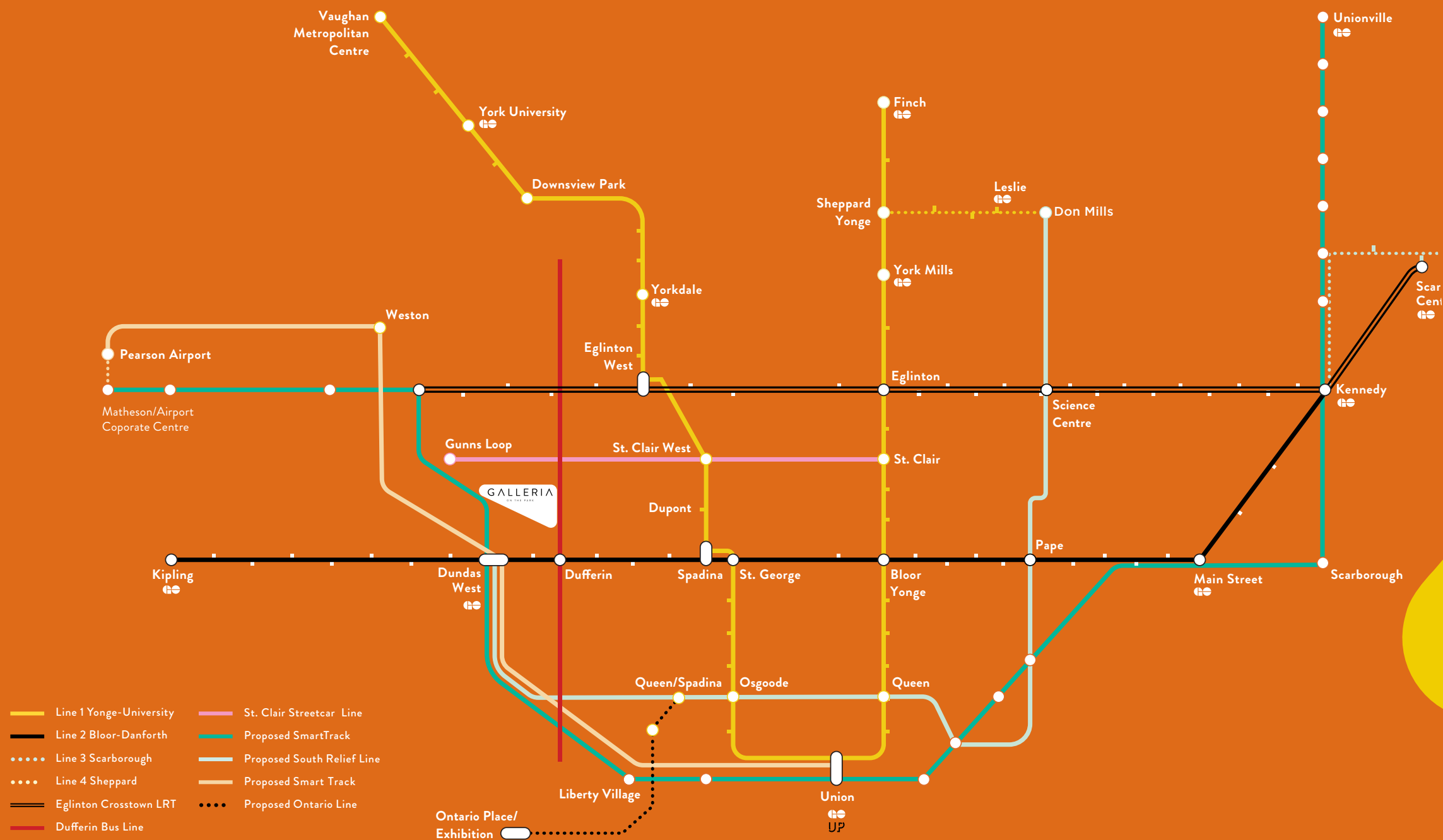




**Access  
Your City**



# Designed to make getting around on foot and by bike easy, Galleria on the Park also has the TTC and airport connections you need.



### TTC

The #29 Dufferin bus runs 24 hours a day, south to the lake, and north to North York, with a stop at Yorkdale Mall. Dufferin station is just 5 minutes south by bus, giving you access to Line 2 of the Bloor Danforth subway line.

The #26 bus runs along Dupont between St. George Station and Jane Station. TTC buses will also travel through the Galleria on the Park district, making public transit safer and more convenient.

### Biking

Galleria on the Park's thrilling new park will incorporate cycling lanes that connect to the city's existing infrastructure for cyclists. You'll be able to ride from home to the bike lanes on Lappin, Dupont, Davenport, and Bloor.

### Highways

Dufferin Street takes you south and connects you to the Gardiner Expressway.

### Walking

Galleria on the Park has a walk score of 92, which means everything you need to access is on your doorstep. For exercise and as a viable transportation option in itself, you can easily walk south to Bloor or north to St. Clair, and along Dupont in either direction. And from your suite, it's only a 1-minute walk to the closest bus stop.

### Union-Pearson Express

Need to catch a flight from Pearson Airport? The Union-Pearson (UP) Express train makes a stop right next to the Dundas West subway station. You can also take a quick trip on the UP to Union Station in the Financial District.

### Galleria Fun Facts

FUTURE BIKE LANES

# 04

Source: walkscore.com

TRANSIT SCORE

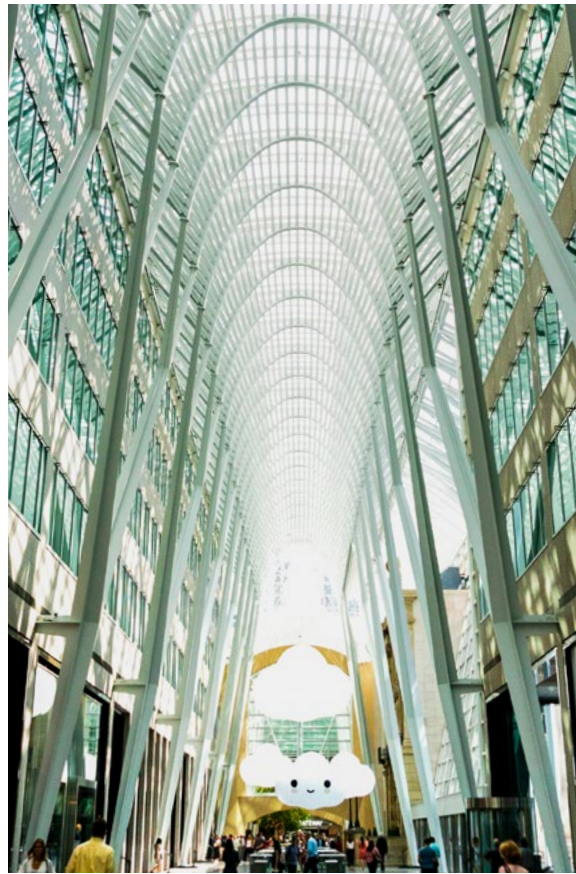
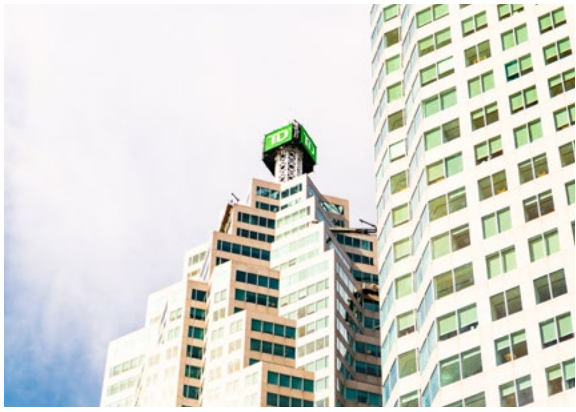
# 86



*DuPont St*

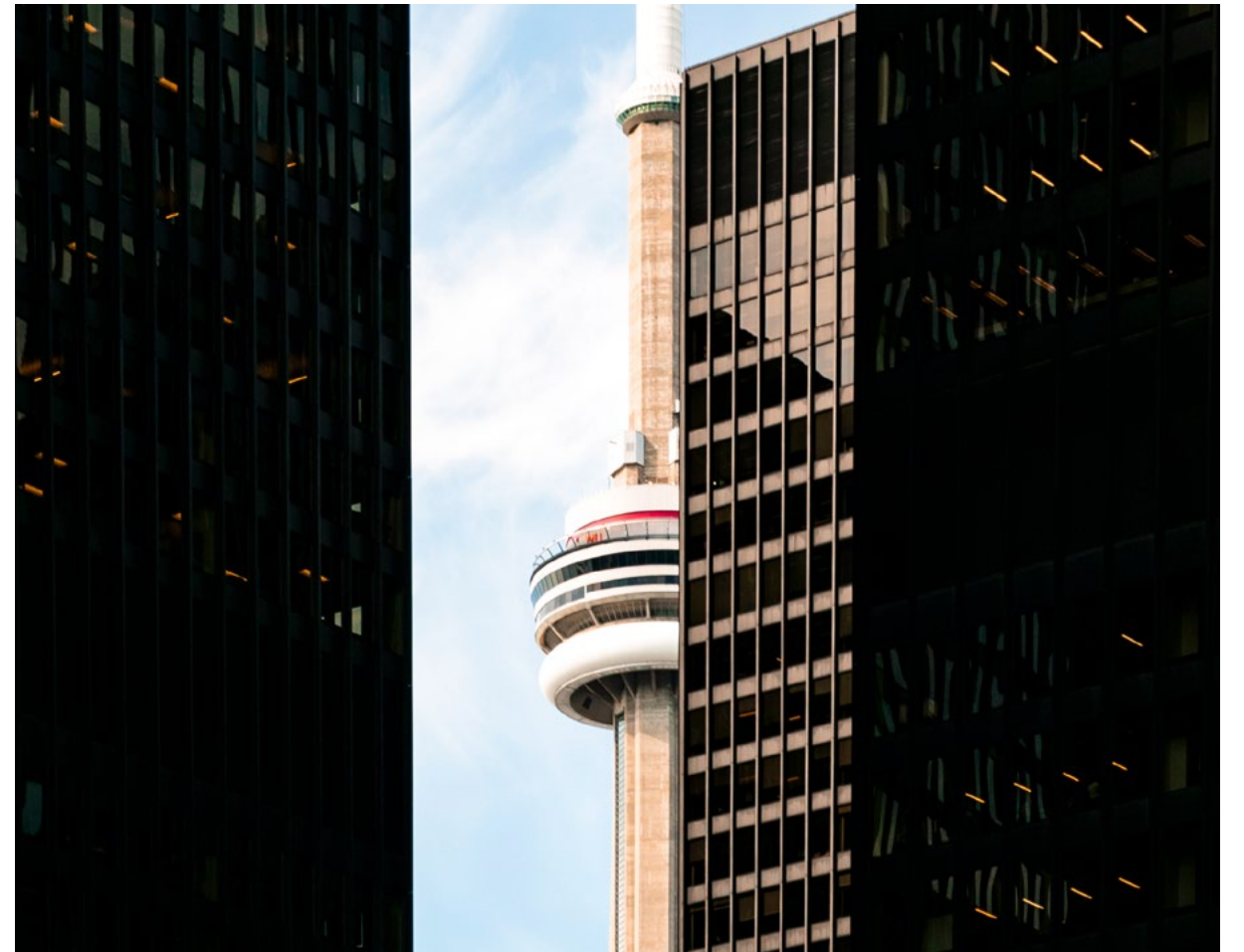
1343





## FAST FINANCIAL DISTRICT CONNECTIONS

Whether you work in the Financial District or you're planning to take in some of this downtown Toronto area's sights and attractions, **you can easily get there in just over half an hour.** The Dufferin bus connects you to Dufferin subway station in minutes, and from there it's only a short subway ride away.







**#LiveAsOne**





# Back In The Day





The Galleria site has transitioned through the ages from forest to industrial heartland, to 1970s shopping mall, and now an unprecedented, mixed-use, city park community.

In the early 1900s, the site began to house a succession of large factories that turned out the most in-demand products of the day. This area was the focus of intense industrialization – raw materials were shipped in by train on the new east-west railway corridor, and shipped out as finished goods.

# THE EVOLUTION OF THE GALLERIA SITE

Curtiss Canada Aircraft Operations  
made World War 1 airplanes

## 1900s

After WWI, the site was sold to the  
Columbia Gramophone Company.

## 1919-25

Dupont Street was created in 1924, just  
before the site was redeveloped as an  
automobile factory – first by Dodge  
Brothers in 1925, later by Chrysler in 1928.

## 1925-72

As one of Toronto's first enclosed  
malls, the Galleria Shopping Centre  
had a large draw as a neighbourhood  
shopping plaza.

## 1972





**TORONTO PUBLIC LIBRARY  
BLOOR GLADSTONE BRANCH**

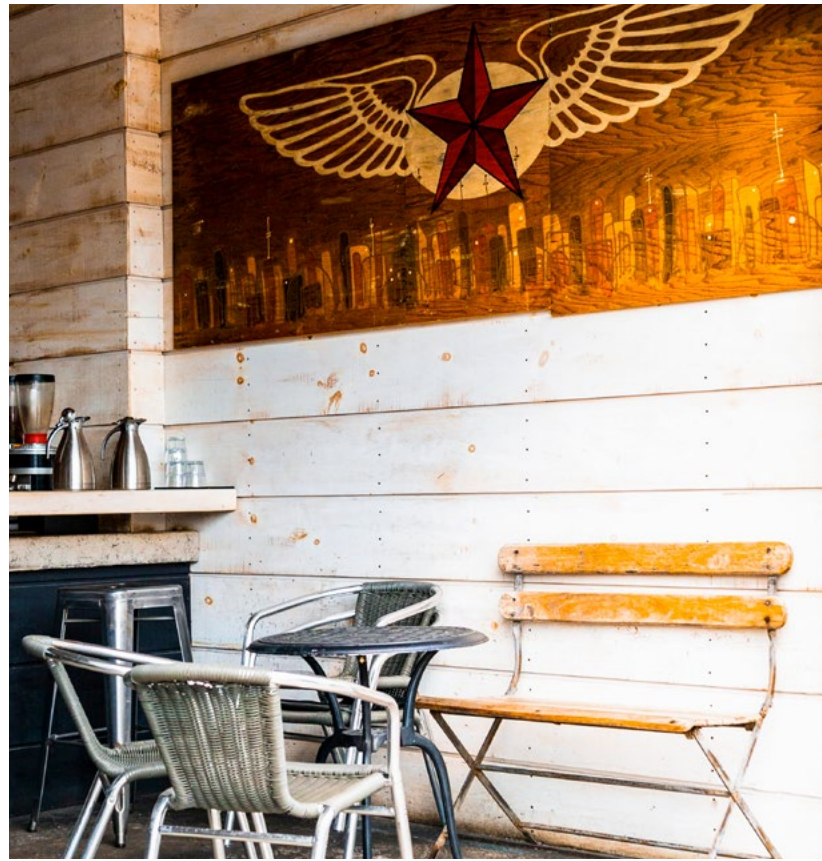


**Shopping – 1970s style**

By 1972, industrial production in central Toronto was beginning to wind down. Taking over the old factory site, the Galleria shopping centre arose to provide a comfortable, convenient indoor shopping experience for locals.

**Resurgence of Dupont**

The Dupont area has come full circle and is once again alive with industry and creativity – though on a smaller scale than 100 years ago. Artisans, artists, and makers, master chefs and brew masters are creating a dynamic, magnetic scene, embodying the ambitious spirit of days past.

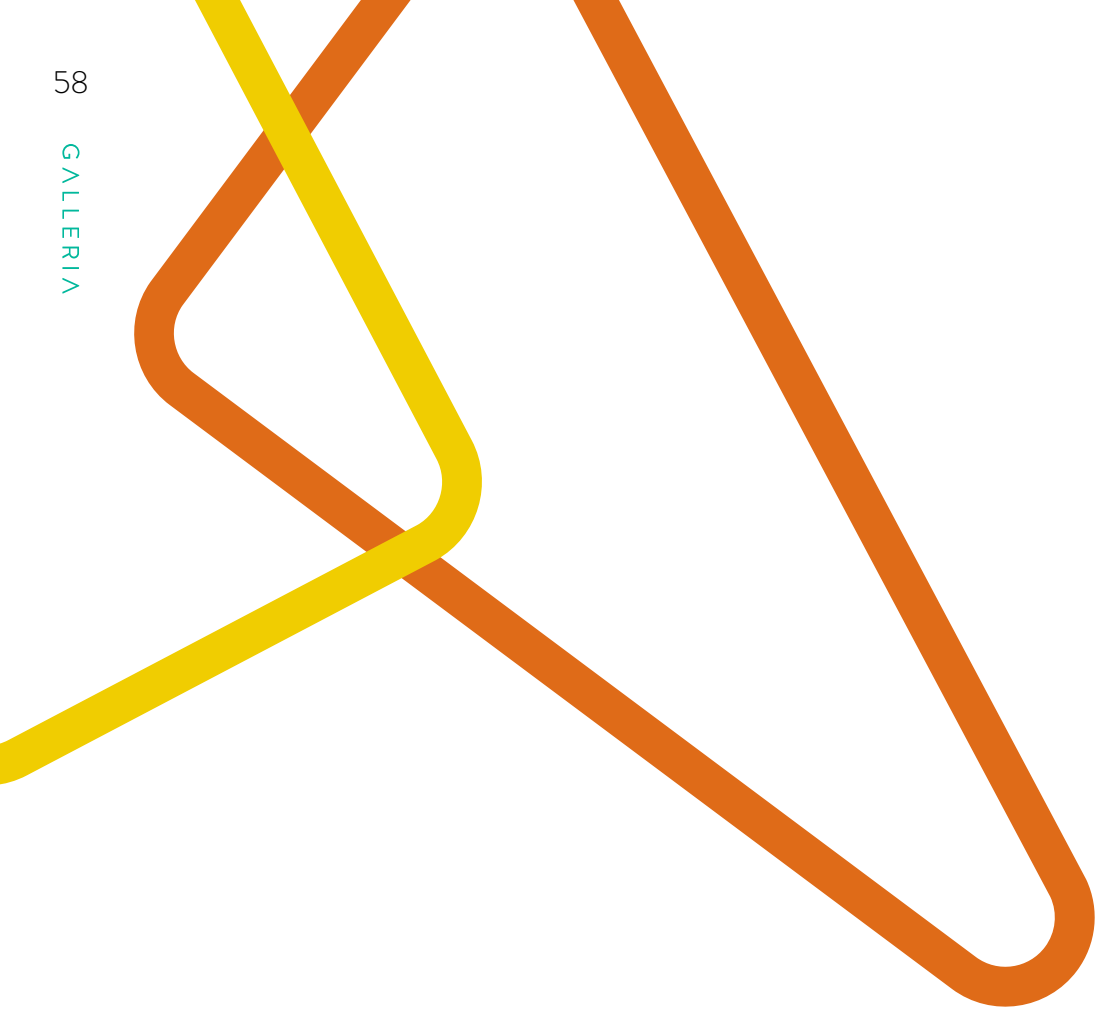






#LiveAsOne

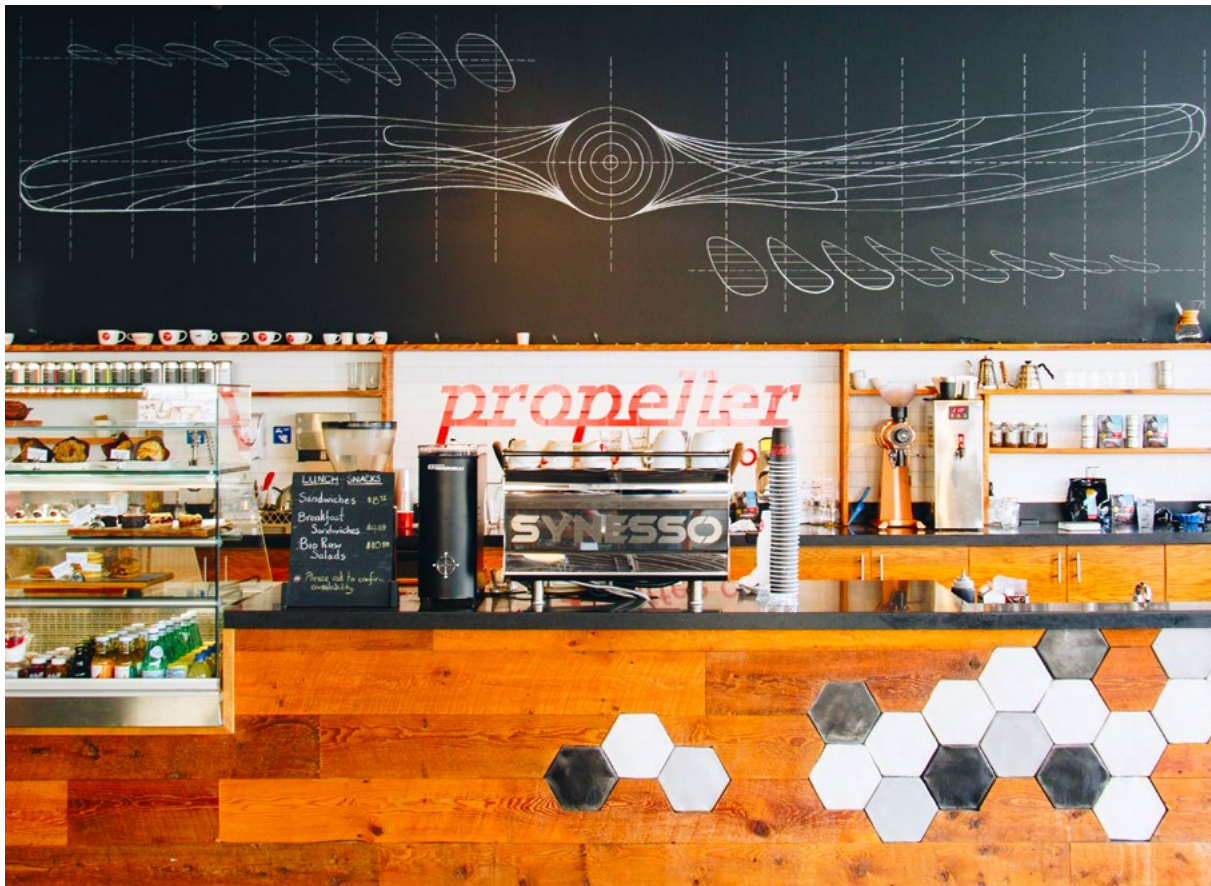




# Discovering The New Dupont







It's people that make a place, and people with their infinite ideas are remaking the Dupont corridor, converting its former factories into welcoming social, work, and entertainment spaces.

The new Dupont's art galleries, brew pubs, cafés, and restaurants are exerting an irresistible pull on Torontonians from across the city who are looking for something unique and heart-felt.





**A fair exchange**

Living at Galleria on the Park, you're part of the exuberant energy of the new Dupont scene – in a symbiotic relationship with the purveyors of new flavours and crafts, artwork, and styles. Spontaneous social exchange occurs as you discover more exciting ways to spend your time, widening the circle of community and familiarity.







Handwash



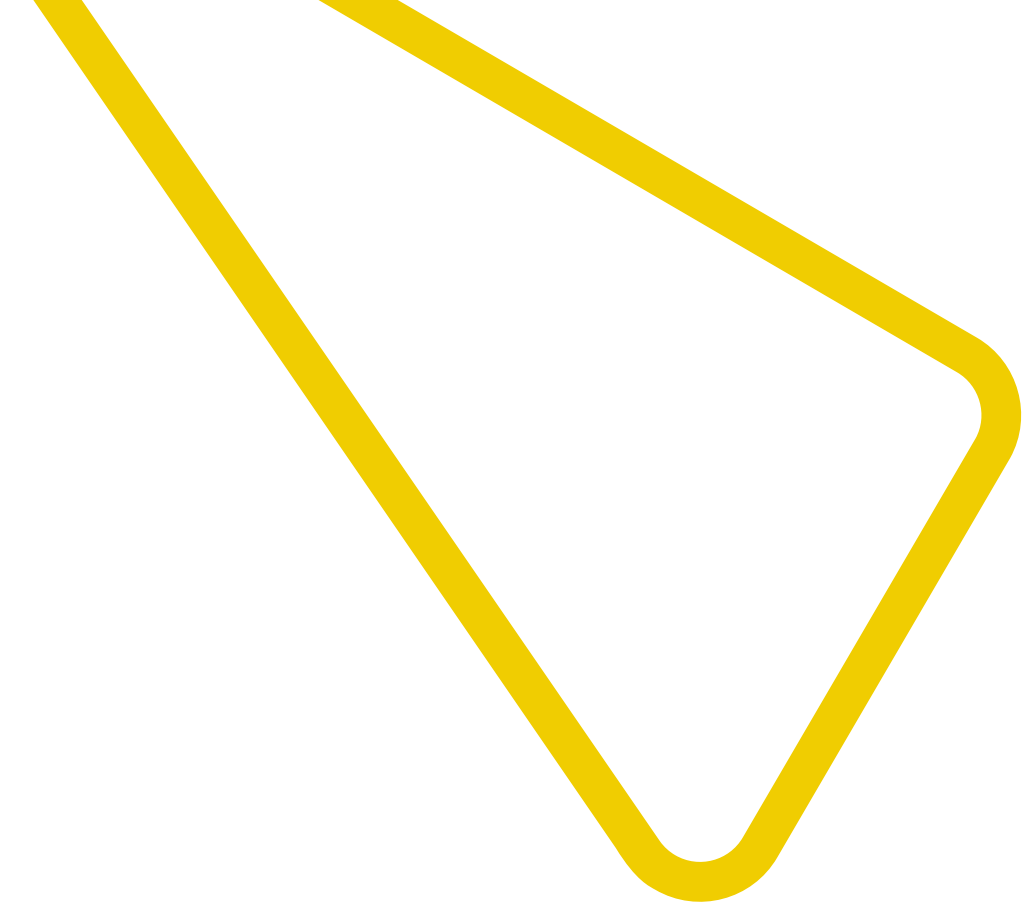
MARZOTTO







# Neighbourhood Amenities





A head-spinning universe of flavours surrounds Galleria on the Park. Travel in any direction, and **you're guaranteed to find a place with exactly the kind of food and drinks you crave** – including top-drawer grocery stores for all the ingredients and fresh produce you need to stock your kitchen. When it comes to food and drink, you're in the perfect spot.



**WHERE TO  
FIND FLAVOUR**





**RESTAURANTS**

1. **Parallel**  
217 Geary Ave.
2. **Sugo**  
1281 Bloor St. W.
3. **Defina Wood Fired**  
1485 Dupont St.
4. **Alma**  
1194 Bloor St. W.
5. **Famiglia Baldassarre**  
122 Geary Ave.
6. **Donna's**  
827 Lansdowne Ave.
7. **Baddies**  
679 Lansdowne Ave.
8. **Giulietta's**  
972 College St.
9. **Fat Pasha**  
414 Dupont St.
10. **Skippa**  
379 Harbord St.
11. **Love Chix**  
1588 Dupont St.
12. **Farmhouse Tavern**  
1627 Dupont St.
13. **Brock Sandwich**  
1260 Bloor St. W.
14. **Mattachioni**  
1617 Dupont St.
15. **Porta Nova Steakhouse**  
211 Geary Ave.
16. **North of Brooklyn Pizzeria**  
229 Geary Ave.

**BARS**

1. **Seoul Shakers**  
1241 Bloor St. W.
2. **Northwood**  
815 Bloor St. W.
3. **Civil Liberties**  
878 Bloor St. W.
4. **Mulberry Bar**  
828 Bloor St. W.
5. **Paradise Grapevine**  
841 Bloor St. W.
6. **The Greater Good**  
229 Geary Ave.
7. **The 3 Speed**  
1163 Bloor St. W.
8. **Grey Tiger**  
1190 Bloor St. W.
9. **Bar Neon**  
1226 Bloor St. W.
10. **The Gaslight**  
1426 Bloor St. W.
11. **Hawaii Bar 989**  
989 Dovercourt Rd.

**CRAFT BREWERIES & DISTILLERIES**

1. **Burdock Brewery**  
1184 Bloor W.
2. **Yongehurst Distillery**  
346 Westmoreland Ave.
3. **Halo Brewery**  
247 Wallace Ave.
4. **Blood Brothers Brewing**  
165 Geary Ave.

**COFFEE & TREATS**

1. **Dark Horse Espresso Bar**  
120 Geary Ave.
2. **Wallace Espresso**  
188 Wallace Ave.
3. **Propeller Coffee Co.**  
50 Wade Ave.
4. **Starbucks**  
1090 Bloor St. W.
5. **Contra Café**  
1028 Shaw St.
6. **Field Trip**  
3 Westmoreland Ave.
7. **Sovereign**  
1359 Davenport Rd.
8. **Knock Out Ice Cream**  
342 Westmoreland Ave. N.
9. **Bakerbots**  
205 Delaware Ave.

**FOOD AND GROCERY STORES**

1. **Freshco**  
Galleria Mall
2. **Fiesta Farms**  
200 Christie St.
3. **Food Basics**  
830 Lansdowne Ave.
4. **Loblaws**  
50 Dupont St.
5. **Sobeys**  
840 Dupont St.
6. **No Frills**  
900 Dufferin St.
7. **Dufferin Grove Organic Farmers' Market**  
Thursdays from 3-7 p.m. year round



## SOUP + SALAD

- SEASONAL SOUP** 12  
chef's daily creation, market-inspired
- CREAMY CAESAR** 14  
gem lettuce, soft egg, black forest bacon,  
parmesan, sourdough croutons
- WARM CAULIFLOWER + FENNEL** 14  
cashew crema, brandy pickled grapes,  
basil pesto (v/so)
- CALI AVOCADO + PRAWN SALAD** 23  
smoked whitefish, arugula, grapefruit,  
yuzu vinaigrette (so)
- SIDE GREENS SALAD** 4  
preserved lemon dressing (v/so)
- SALAD ADD-ONS:**  
chicken +6  
miso egg +3  
mackerel +6  
avocado +4

## PIZZA BY THE SLICE

- CLASSIC MARGHERITA** 7  
tomatoes, mozzarella + basil (v)
- SPICY PEPPERONI** 7  
with blistered pepperoni
- SPINACH + GOAT CHEESE** 7  
with confit garlic

## SANDWICHES

- CHILI + BEEF TOAST** 7  
**CHICKEN SANDWICH** 7  
poblano, smoked queso,  
picada, grilled
- DELI-STYLE REUBEN** 7  
smoked brisket,  
Russian dressing, pickles

## SELECTED DRINKS

- REUNION ISLAND COFFEE**  
coffee/espresso 3.50  
americano 3.75  
cappuccino 4.25  
latte 4.50  
macchiato 3.75  
matcha latte 6  
maple almond latte 6  
turmeric latte 6
- PLUCK TEA**  
various 4.50
- ARTISANAL SODA**  
RED + GREEN JUICE 8  
ORANGE JUICE 5  
GRAPEFRUIT 7
- ICED TEA** 5  
various 4.50
- FRUIT SMOOTHIE** 9







## STYLE YOUR HOME

Decorating your Galleria on the Park suite can be a fun exercise, with such a great variety of furniture, art, and décor shops in the surrounding neighbourhoods. You're bound to find exactly what you need to pull a look together that's all yours.

### Designer Tip

Buy items like sofas, beds, and desks at basic furniture stores, and then shop the new Dupont's art and vintage stores for one-of-a-kind décor items. Mix and match to create your signature style.



## ART, DÉCOR AND FURNITURE

Rebarn 1611 Dupont St.

Furniture Emporium 1237 Bloor St. W.

Saudade 1191 Dundas St. W.

Vintage Home Boutique 1639 St. Clair Ave. E.

Artscape at Wychwood Barns 601 Christie St.

The Brick 1352 Dufferin St.

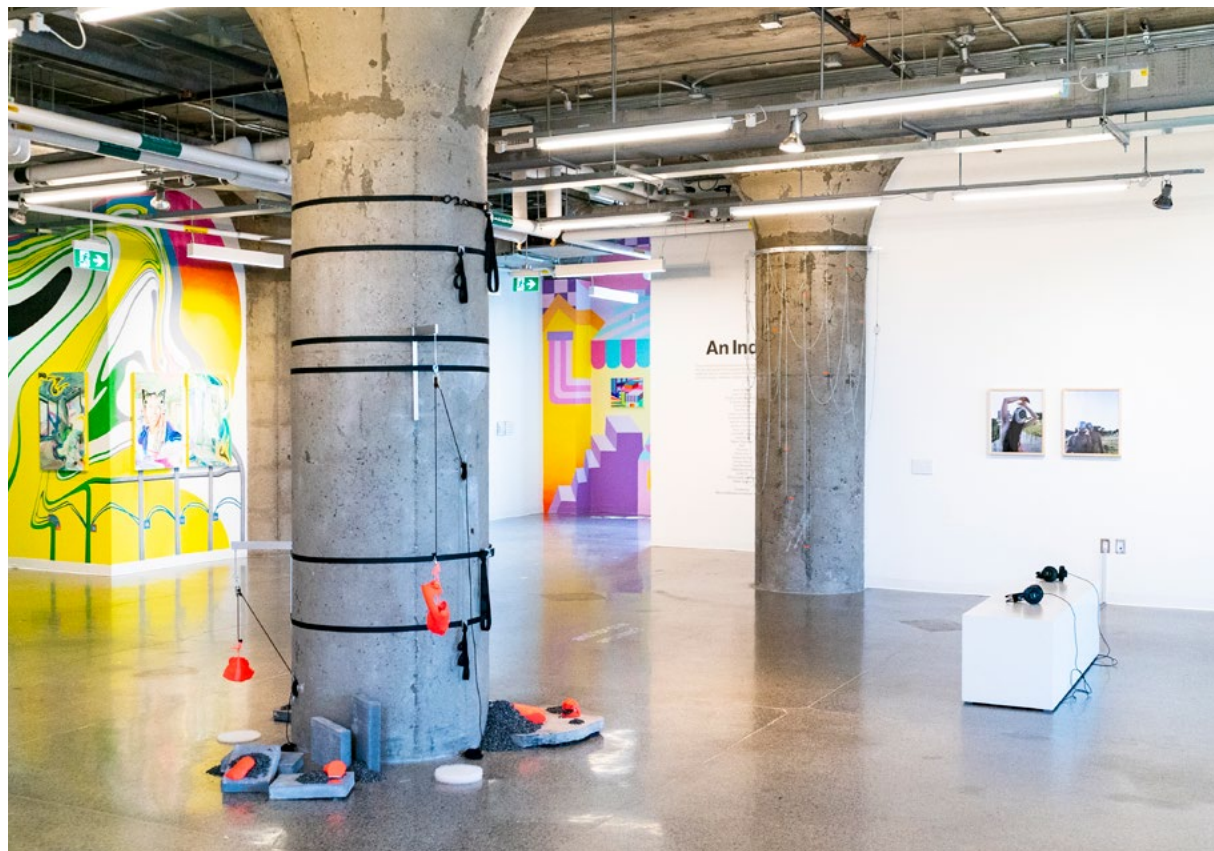
Toronto Weston Flea Market 404 Old Weston Rd.

The Art of Demolition 390 Keele St.

G.H. Johnson's Trading Company 950 Dupont St.







## GALLERIES &amp; THEATRES

- Cooper Cole Gallery 1134 Dupont St.
- Matter Gallery 344 Westmoreland Ave.
- Angell Gallery 1444 Dupont St.
- Erin Stump Projects 1558 Dupont St.
- Division Gallery 45 Ernest Ave.
- Scrap Metal Gallery 11 Dublin St. E.
- Clint Roenisch Gallery 190 St. Helens Ave.
- Mercer Union 1286 Bloor St. W.
- Xpace Cultural Centre 303 Lansdowne Ave.
- MOCA Toronto 158 Sterling Rd.
- Paradise Theatre 1006 Bloor St. W.









#LiveAsOne





Learn how to rock climb. Earn a black belt in martial arts. Practice the latest dance moves or strengthen and tone at yoga classes. **Whatever your passion, you'll find fantastic options for exercise and fitness in the new Dupont area.**

**YOGA**

**Archa Mati's Yoga For Life**  
990 Dovercourt Rd.

**Yoga Mix**  
1444 Dupont St.

**Yoga for Life**  
990 Davenport Rd.

**Union Yoga**  
956 Bloor St. W.

**Liberty Movement & Wellness**  
983 Dovercourt Rd.

**BOXING**

**Sully's Boxing & Athletic Club**  
1024 Dupont St.

**United Boxing Club**  
1034 Bloor St. W.

**CROSS TRAINING**

**Carpio Strength and Conditioning**  
213 Geary Ave.

**F45 - The Junction**  
1655 Dupont St.

**DANCE**

**Millennium Dance Complex**  
950 Dupont St.

**MARTIAL ARTS**

**Shark Muay Thai**  
213 Geary Ave.

**Zirger Academy Martial Arts**  
927 Dupont St.

**CLIMBING**

**Boulderz Climbing Centre**  
1444 Dupont St.

**Basecamp Climbing**  
677 Bloor St. W.

**SKATING / BMX**

**Dufferin Skating Rink**  
Dufferin Grove Park

**Skatepark**  
Dufferin Grove Park

# GET PHYSICAL





Newly expanded Wallace-Emerson Park is right outside your door at Galleria, but you can also explore several other parks in the area. **Walk, bike, or TTC there for the open spaces and greenery.**

**PARK  
YOURSELF**



**Campbell Park**  
Skating and soccer:  
225 Campbell Ave.

**Dovercourt Park**  
Tennis courts, splashpad, playground,  
and tree cover:  
155 Bartlett Ave.

**Christie Pitts Park**  
Skateparks, splash pads,  
baseball diamond and more:  
750 Bloor St. W.

**Dufferin Grove**  
Skateparks, splash pads, playground,  
basketball courts, picnic areas,  
Thursday farmers market year 'round:  
875 Dufferin St.



**Earlscourt Park**  
Running track, sports field, picnic  
area: Lansdowne & Davenport

**Geary Avenue Parkette**  
Garden, kids' playground, wading  
pool: 15 Geary Ave.

**Wychwood Barns Park**  
Skating, sports field, picnic area,  
beach volleyball court and weekly  
farmers market:  
76 Wychwood Ave.





# ESSENTIAL SERVICES

Any time you need to take care of personal business – from getting your bike fixed to meeting with a financial services rep – **you're close to all kinds of services**, with people ready to help you.

## BANKS

**TD Canada Trust**  
Galleria Mall

**Bank of Montreal**  
1502 Dupont St.

**RBC**  
972 Bloor St. W.

**Scotiabank**  
992 Bloor St. W.

**CIBC**  
1129 Bloor St. W.

**National Bank**  
1295 St. Clair Ave. W.

## BIKE REPAIR SHOPS

**Sweet Pete's Bike Shop**  
1204 Bloor St. W.

**Bike Depot**  
1222 Bloor St. W.

**Riders Cycle and Board**  
386 Harbord St.

**Dave Fix My Bike**  
254 Christie St.

## LIBRARIES

**Bloor and Gladstone Public Library**  
1101 Bloor St. W.

**Perth and Dupont Public Library**  
1589 Dupont St.

## MEDICAL OFFICES & PHARMACIES

**Rexall**  
Galleria Mall

**Dentistry on Dupont**  
1375 Dupont St.

**Shoppers Drug Mart**  
1400 Dupont St.

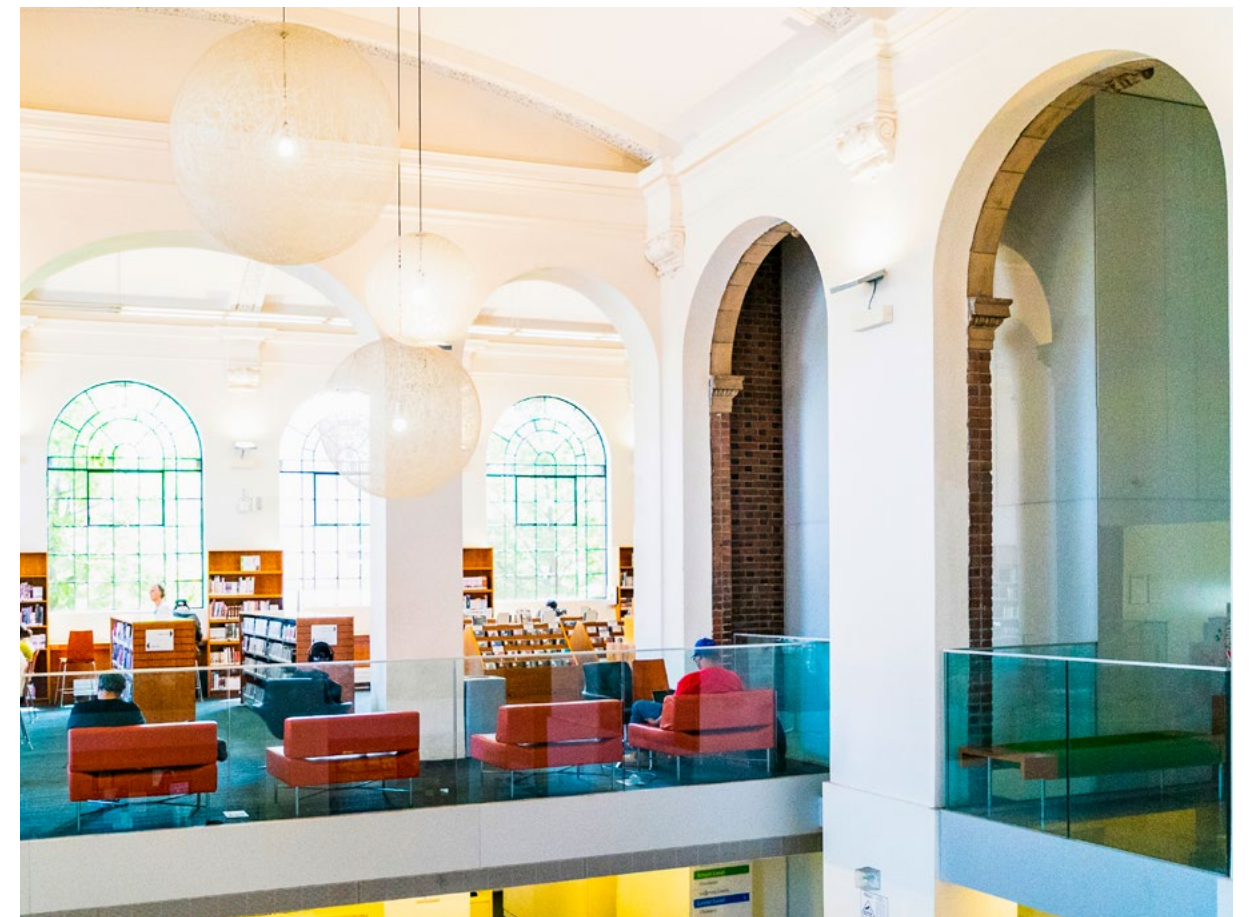
**Davenport Perth Neighbourhood Community Health Centre**  
1900 Davenport Rd.

**Rollcare Medical Services**  
1254 Bloor St. W.

**Main Drug Mart**  
1130 Bloor St. W.

**Bloor Lansdowne Dental Centre**  
703 Lansdowne Ave.

**Good Health Walk-in Medical Clinic**  
1615 Dufferin St.



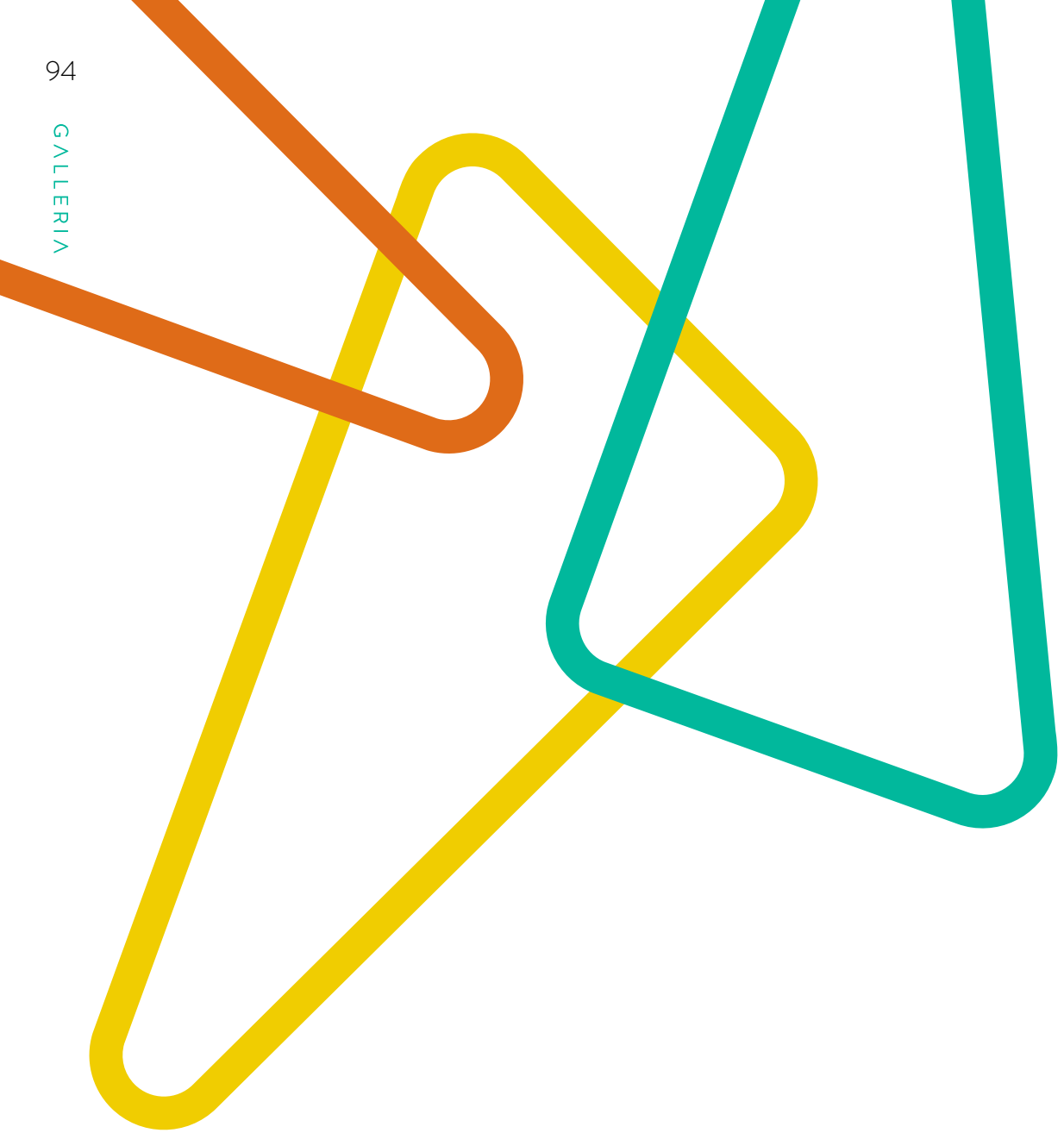




**#LiveAsOne**



# School Days





Whatever age your kids have reached and the style of teaching you prefer for them, you'll find a **variety of educational institutions around Galleria on the Park.**



**TORONTO DISTRICT SCHOOL BOARD**

- Dovercourt Public School**  
228 Bartlett Ave.
- Pauline Junior Public School**  
100 Pauline Ave.
- Essex Junior & Senior Public School**  
50 Essex St.
- Kent Senior Public School**  
980 Dufferin St.
- Bloor Collegiate Institute**  
1141 Bloor St. W.
- Regal Road Junior Public School**  
96 Regal Rd.

**TORONTO DISTRICT CATHOLIC SCHOOL BOARD**

- St. Sebastian Elementary School**  
717 Brock Ave.
- St. Anthony Catholic School**  
130 Shanly St.
- St. Mary Catholic Academy**  
66 Dufferin Park Ave. W.

**EXTRACURRICULAR**

- The Children's Arts Theatre School**  
165 Geary Ave.

**POST-SECONDARY**

- George Brown College, Casa Loma Campus**  
160 Kendal Ave.
- Ryerson University**  
350 Victoria St.
- University of Toronto**  
27 King's College Cir.





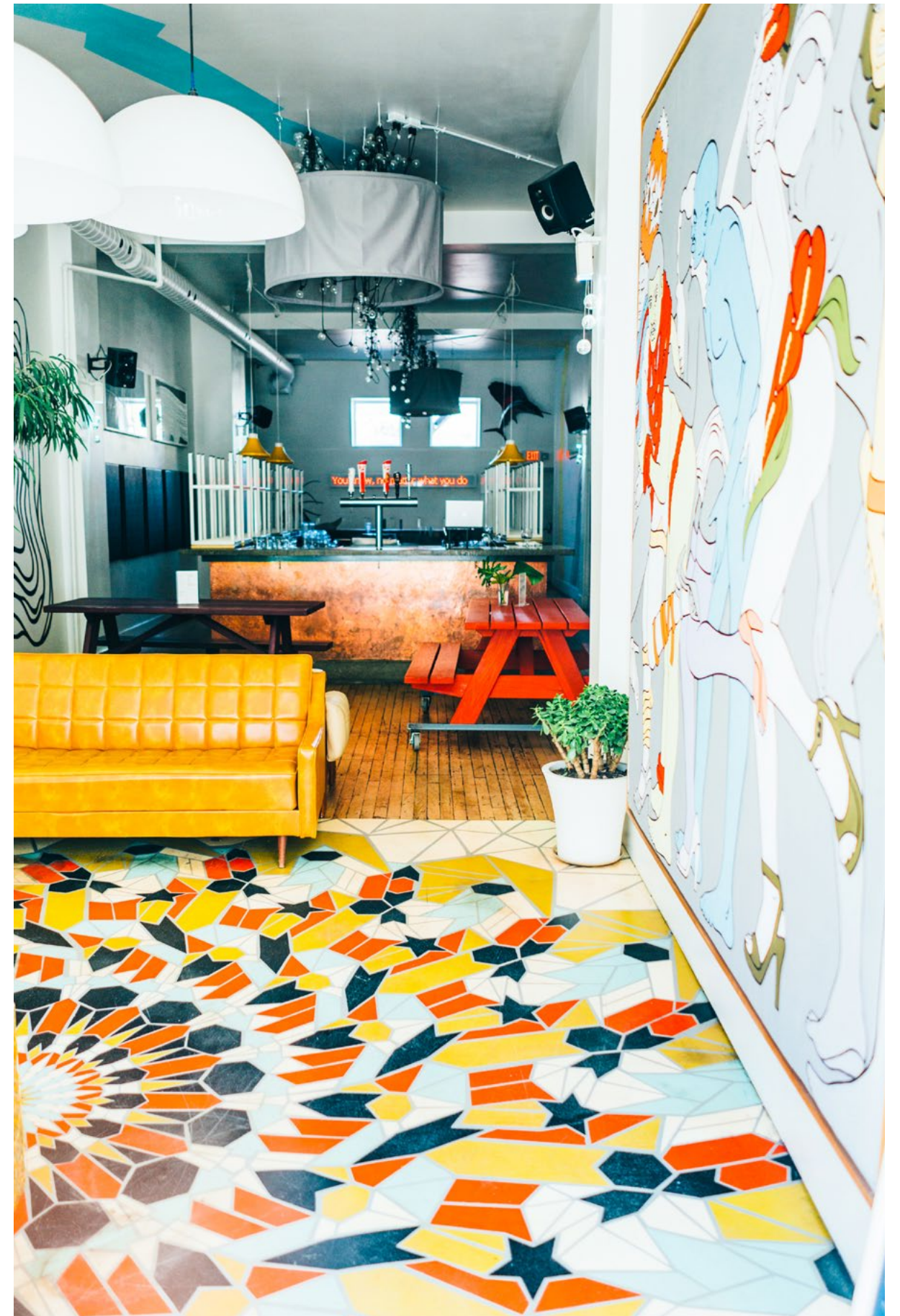
# The Buzz On Geary





A street can define a neighbourhood. Think Queen West – quirky bohemianism. Broadway, NYC – the pinnacle of live theatre. And Bangkok’s Khao San Road – ground zero for backpackers.

Geary Avenue, just north of Galleria on the Park, is **one of those rare urban destinations** that evolves organically when a few artists and entrepreneurs move into former industrial spaces and convert them to studios, cafés, and galleries.



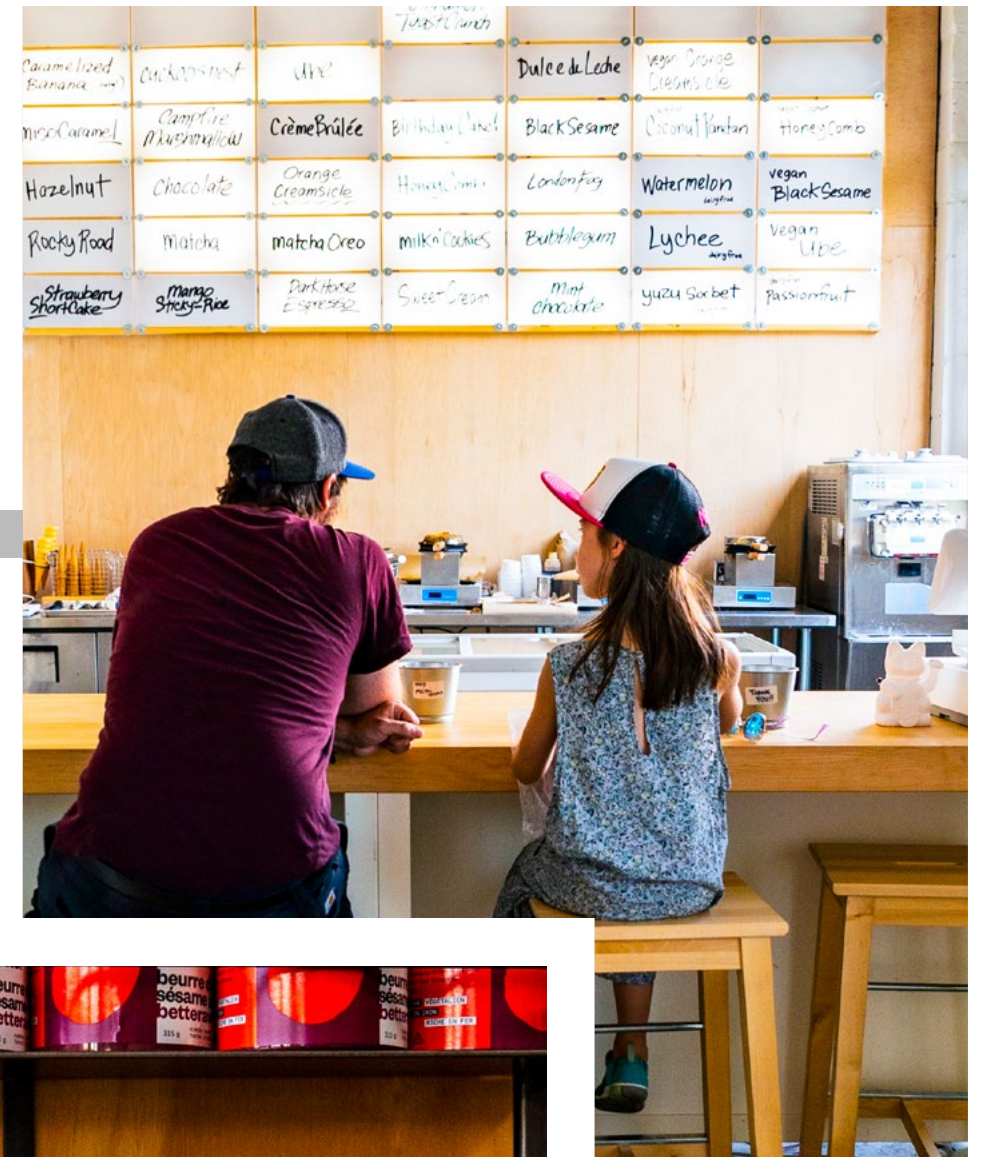






When their products are unique and high-quality, they attract local residents, and a buzz slowly begins to spread outside the area, pulling in more artisans and cultural creators, and more curious visitors from all over the city. This is exactly what's happening on Geary Avenue.

Some say it all started to happen at the Artisan Factory, a converted warehouse building at the corner of Geary and Westmoreland Ave. geared toward artisans, artists, cafés and events.



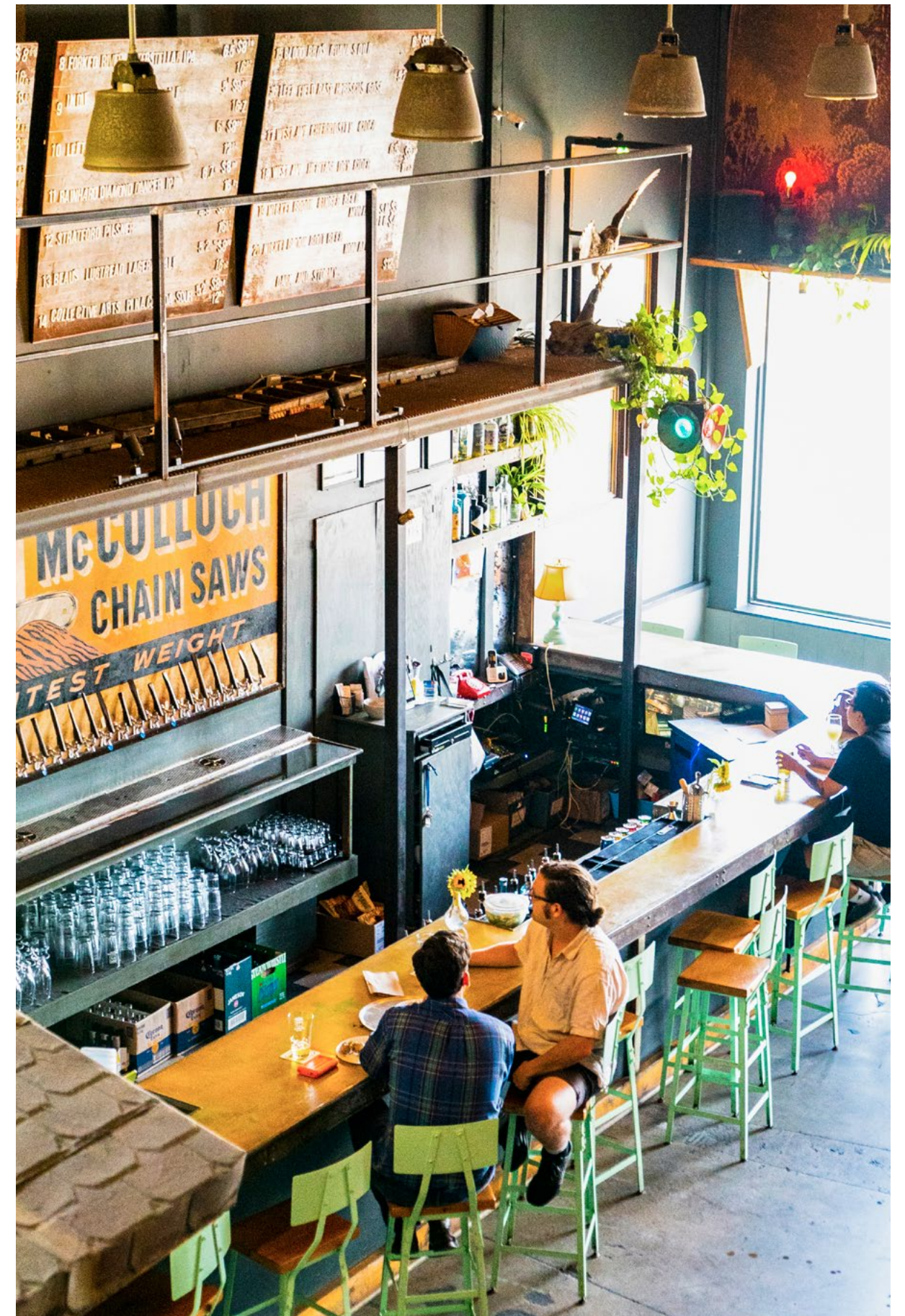




#### Where to go on Geary

Take a walk along Geary Ave. and check out these intriguing spots:

- Gearly Guitarworks 116 Geary Ave.
- Dark Horse Espresso Bar 120 Geary Ave.
- Famiglia Baldassarre 122 Geary Ave.
- Blood Brothers Brewing 165 Geary Ave.
- Porta Nova Restaurant 211 Geary Ave.
- Parallel 217 Geary Ave.
- Nova Era Bakery 200 Geary Ave.
- North of Brooklyn Pizzeria 229 Geary Ave.
- The Greater Good 229 Geary Ave.







**#LiveAsOne**



# The Flavours of Portugal







Galleria is right in the centre of the one area in Toronto with the highest concentration of Portuguese people. And even though Little Portugal is a bit farther south on College Street, Portuguese restaurants are all over the city, including the new Dupont. There's even a street off Ossington called Acores Ave., paying tribute to the thousands of Portuguese people who have immigrated here from the Azores Islands.

Plan a trip to any of these Portuguese eateries, and “*Bom Appetite*” to you!

**Caldense Bakery**  
Croissants, coffee and Portuguese desserts: 337 Symington Ave.

**Piri Piri Grillhouse**  
Portuguese cuisine, with a multitude of fish options: 1444 Dupont St.

**Porta Nova Restaurant**  
Portuguese-influenced surf & turf with local flavour: 211 Geary Ave.

**Bairrada Churrasqueira**  
Chicken rotisserie: 1000 College St.

**Ilhas de Bruma**  
Seafood restaurant, with a weekend buffet: 1136 College St.

With so many Portuguese people living and working nearby, there's no doubt the flavours and styles of Portugal have contributed in a big way to the neighbourhood.





**#LiveAsOne**





# ELAD CANADA

The realization of development projects and value enhancement forms the cornerstone of ELAD Canada's multi-billion dollar operations. Backed by extensive international capital and benefiting from experience and in-depth knowledge of the industry, **ELAD has a proven track record with large scale, multi-phase projects and numerous office, industrial and retail properties** throughout Canada and the US. With a best-in-class reputation for creative thinking and investing in the execution and delivery of untapped development opportunities, ELAD is highly skilled at seeking out sites with high potential, close to transit and major points of interest. **Best known for its visionary approach** at the award winning, master planned Emerald City in Toronto, ELAD also leads the way with innovative projects in Montreal. ELAD has recently acquired Lansing Square, a 400,000 sq.ft. office complex on approximately 15 acres, slated to be redeveloped as a mixed-use community.



All renderings are artist's impression only. Certain design elements are subject to change. Some descriptions and renderings in the brochure include details or images of a planned building or feature within the development or associated with the development (such as the community park), which are still in the development stage and subject to further approvals. The inclusion of these descriptions and renderings demonstrates our current vision for the community but does not represent a guarantee that the final build-out will be the same as described or as shown. (\*) This is the planned size of the new community centre. Certain parts of the park will be developed by the City of Toronto. The Community Heart is part of the Galleria development but the Play Heart and the Nature Heart are areas planned by the City for future implementation.

[GALLERIAONTHEPARK.COM](http://GALLERIAONTHEPARK.COM)





**A New Dupont City Park Community**

**ELADCANADA**