

ION
CULTURE

RUSH

520 RICHMOND WEST

Alterra
DEFINING URBAN LIVING

04-13

ALTERRA PROJECTS

34-41

A RUSH OF KING WEST

14-27

A RUSH OF QUEEN WEST

42-57

ABOUT RUSH

AREA 28-33 AMENITIES

FLOORPLANS
& FEATURES

58-81

RUSH STANDS BOLDLY AS THE GATEWAY BETWEEN TWO LIFESTYLES.

4

Nestled in perfect proximity to eclectic Queen Street West and polished King Street West, it's this juxtaposition that makes RUSH so singular. The building's design and architecture expertly blend both sensibilities, culling characteristics from each neighbourhood. An intricate, open weave pattern of classic brick, embedded in precast elements, is an homage to the area's famed Fabric District, while timeless glass French balconies represent the bordering street's opulence. Rising 15 storeys, RUSH shines a light on the palpable energy, diversity and history of its surroundings.

RUSH — 520 RICHMOND W



ALTERRA — DEFINING URBAN LIVING

Illustration is artist's concept only. E. & O. E.

6 **DEFINING URBAN LIVING**

Alterra

At Alterra, we define urban living with our exceptionally high standards of construction, masterfully crafting buildings that go on to define the neighbourhood. Because in order to define a neighbourhood, you must first understand it.

We recognize the complex relationship between people and places. From concept to completion, it is the guiding force behind every decision we make. We design buildings that complement the neighbourhoods in which they rise. Buildings that become cultural hubs and spaces for connecting, gathering, and growing.

Forty-five years strong, we are inspired by the ever-changing world around us. To that end, we continually adopt innovative practices, utilize new technology and enhance amenities - all in an effort to create a lifestyle beyond compare.

POST HOUSE

Steps away from St. Lawrence Market, Post House Condominium is a distinctly modern residence set in a heritage-rich neighbourhood. Nuanced and stylish, Post House is located next door to Toronto's very first Post Office. Designed by renowned Wallman Architects, the exterior of the tower is made of modern glass and steel, exuding sleek city cool.



36

HAZELTON

36 Hazelton exemplifies effortless luxury that embraces style defined by substance. Set within a tree-lined street in the heart of Yorkville, this exclusive collection of 20 homes is unlike any other in both setting and design. Not one suite the same. Each unique in its own right.



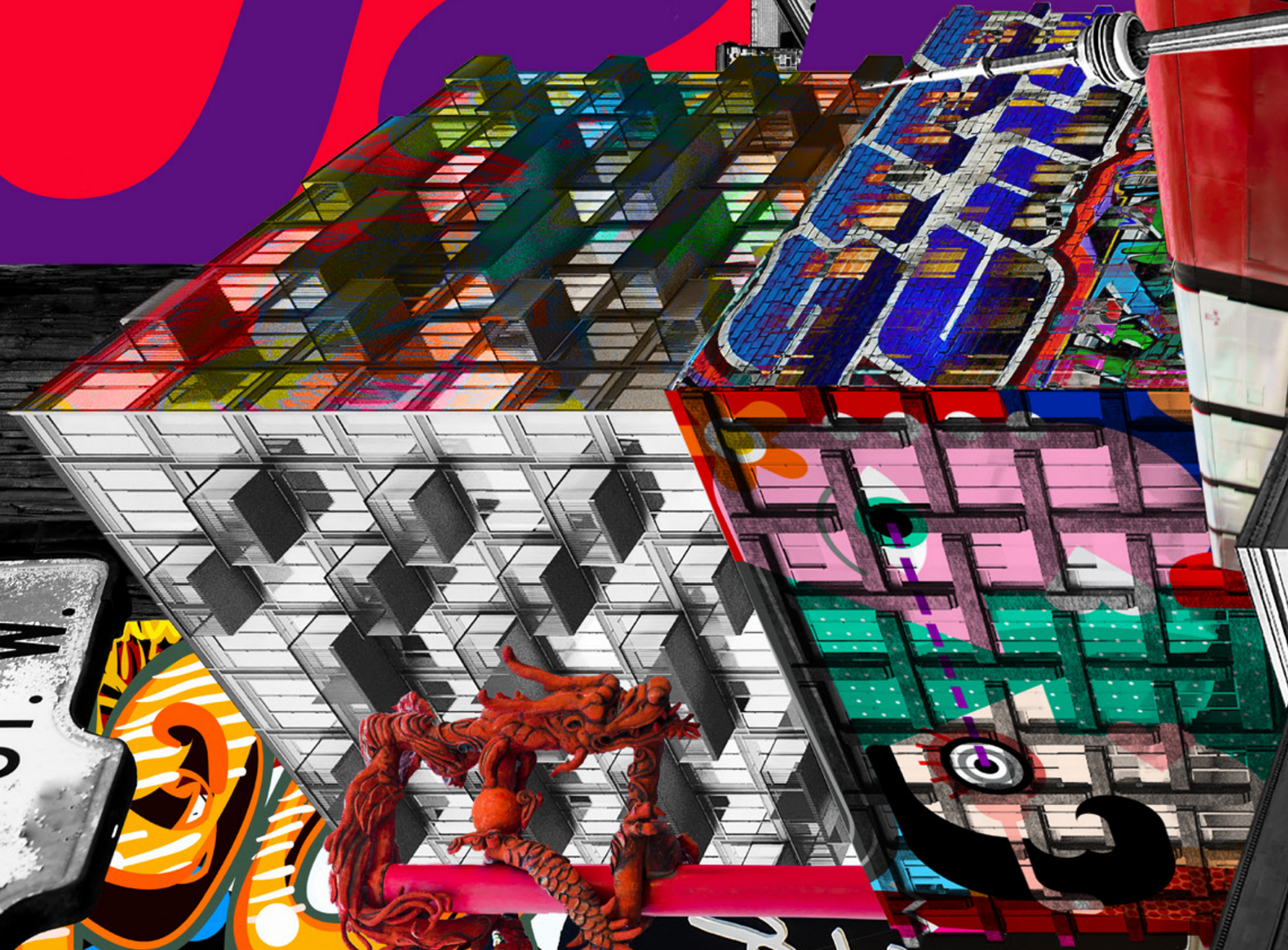
159SW

DEFINED THROUGH DISTINCTION

Striking and sophisticated, 159SW is a far-reaching structure governing the area it defines. Levels of glass, black steel and a robustly gridded framework invoke associations of strength—the strength to radically invigorate an area. Floating high above the heart of Toronto, with eclectic city views and suites anchored in excitement, 159SW is designed to define.

Entertainment District
KING ST. W.

Fashion District
QUEEN ST. W.



Flamethrower Market



**TORONTO'S NEWEST BOUTIQUE
CONDOMINIUM RISES AT
520 RICHMOND STREET WEST.**

Illustration is artist's concept only. E. & O. E.

RUSH



14

15

QUEEN WEST

RUSH is situated in an area that is highly accessible to coveted communities like West Queen West — twice named “one of the coolest streets in the world” by Vogue magazine — King West, and the vibrant Entertainment and Fashion districts. At the heels of Toronto’s famed Rush Lane, this new boutique condominium offers the opportunity to live in an already established neighbourhood while putting you in the heart of one of Toronto’s most exciting regeneration zones.

RUSH — 520 RICHMOND W

ALTERRA — DEFINING URBAN LIVING

Arzt Lampe



A RUSH OF CAFFEINE

18

EARLY BIRD

613 QUEEN W

A cozy café with plenty of seating for days dedicated to daydreaming, reading or catching up with friends. Find a selection of exceptional coffees, sweets, and the best avocado toast.

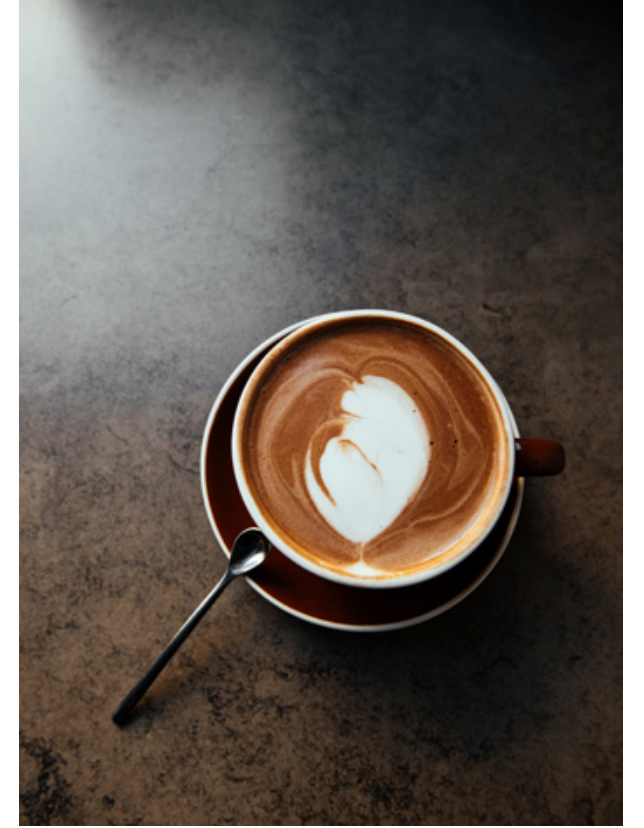


RUSH — 520 RICHMOND W

FAHRENHEIT COFFEE

529 RICHMOND W

A favourite among discerning coffee-lovers, this cozy café serves up three kinds of espresso beans roasted by Pilot Coffee Roasters. Baked goods, in the form of scones, croissants and cookies, grace the countertops waiting to complement your cup of Joe.



STRANGELOVE COFFEE

627 QUEEN W

The folks at Strange Love obsess over coffee. Known for formulating complex, yet delicious blends, and curating heirloom varietals from craft farming regions, the shop has given "artisanal" new meaning. Adorably decorated and overflowing with baked goods, this is a spot you'll keep coming back to.



19

SUD FORNO

716 QUEEN W

Step inside and you'll soon forget you're in Toronto. Bustling with people, brimming with sublime Sicilian delicacies and impeccably designed, Terroni's little sister is a big deal.



ALTERRA — DEFINING URBAN LIVING

A RUSH ²⁰ OF FLAVOUR



THE DIME

538 QUEEN W

A distressed, saloon-inspired bar serving up an expansive range of drinks. Loud, fun, and economical - all food is \$4.95 - you'll soon discover why this establishment merits the long lines.

416 SNACK BAR

181 BATHURST

Infamous for their cutlery-free environment, this cozy gastropub delivers a diverse menu of mouth-watering snacks. Turning out tasty tapas, cool tunes and an even cooler vibe, it's the kind of place that quickly becomes a go-to spot.

BARCHEF

472 QUEEN W

Dimly lit and intimate, BarChef is a feast for the senses. Famed for the city's most innovative cocktails, you can expect their signature drink arriving, ceremoniously, in a smoke-filled bell jar. Beyond the spectacular selection of libations, the snacks are delicious, too.

RUSH — 520 RICHMOND W



ALTERRA — DEFINING URBAN LIVING



TERRONI

720 QUEEN W

Terroni's been serving up Southern Italian cuisine in Toronto since 1992. Famed for fusing authentic dishes with impeccable design, the Queen St location occupies a special place in everyone's heart, since it's the restaurant chain's original shop.



RUSH — 520 RICHMOND W

THE BURGER'S PRIEST

463 QUEEN W

Unpretentious, cool, and wildly delicious, this burger joint will make a believer out of anyone. Responsible for reviving the burger, expect long lineups for their juicy patties, perfect sides, and walls covered in bible narratives.



LISA MARIE

638 QUEEN W

An airy, open space that's ideal for large groups, thanks to communal tables. Diners crowd around Italian tapas, classic comfort food, local craft brews, and cocktails. On warm days, the front window is retracted for maximum sun and fun.



MAKER PIZZA

59 CAMERON

The most decadent and indulgent lineup of pizzas are found at Maker. If cheesy pies aren't your thing, try the shop's Buffalo wings, salads or hot Italian sandwiches. Pro-tip: pick up your pizza in person, as delivery times can be lengthy.



HEEL BOY

773 QUEEN W

Known for their ever-changing, diverse inventory, this is a shoe lover's paradise. The shop's authentic customer service and dog-friendly reputation sets them apart from other retailers.

AESOP

880 QUEEN W

Luxury personal care products from air-silk face oils to fragrant body lotions. Placed on the shop's exterior is a rotating selection of products to try as you stroll by.

REIGNING CHAMP

383 QUEEN W

Elevated athletic wear that's both modern and comfortable. Canadian designed and manufactured, these slick staples stand the test of time.

DUE WEST

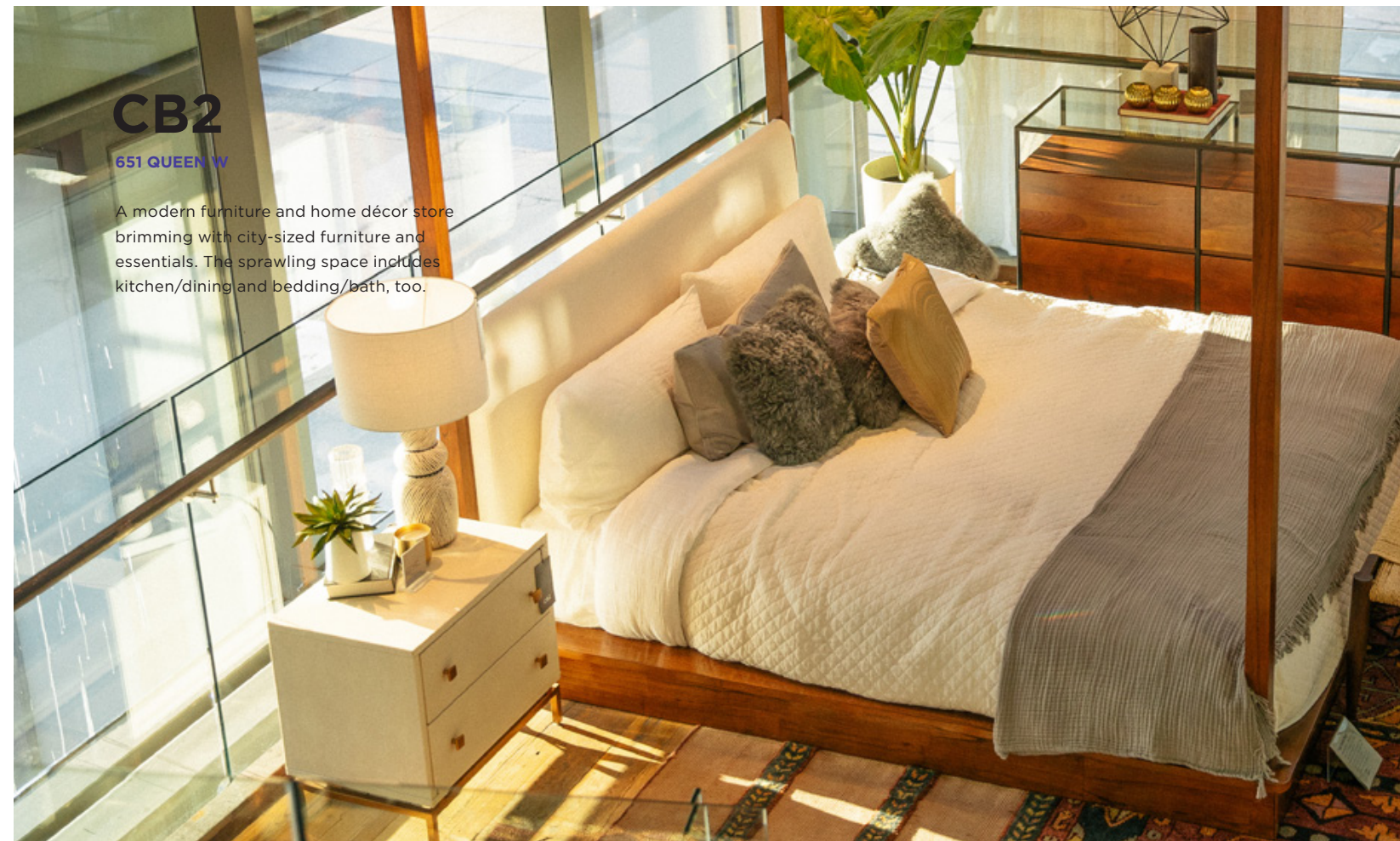
431 QUEEN W

Once a denim destination, Due West now carries premium outerwear, think Canada Goose, and lots of other luxe labels. A Queen W staple, the store is packed with accessories and apothecary, too.

24

A RUSH OF REMARK-ABLE RETAIL

25



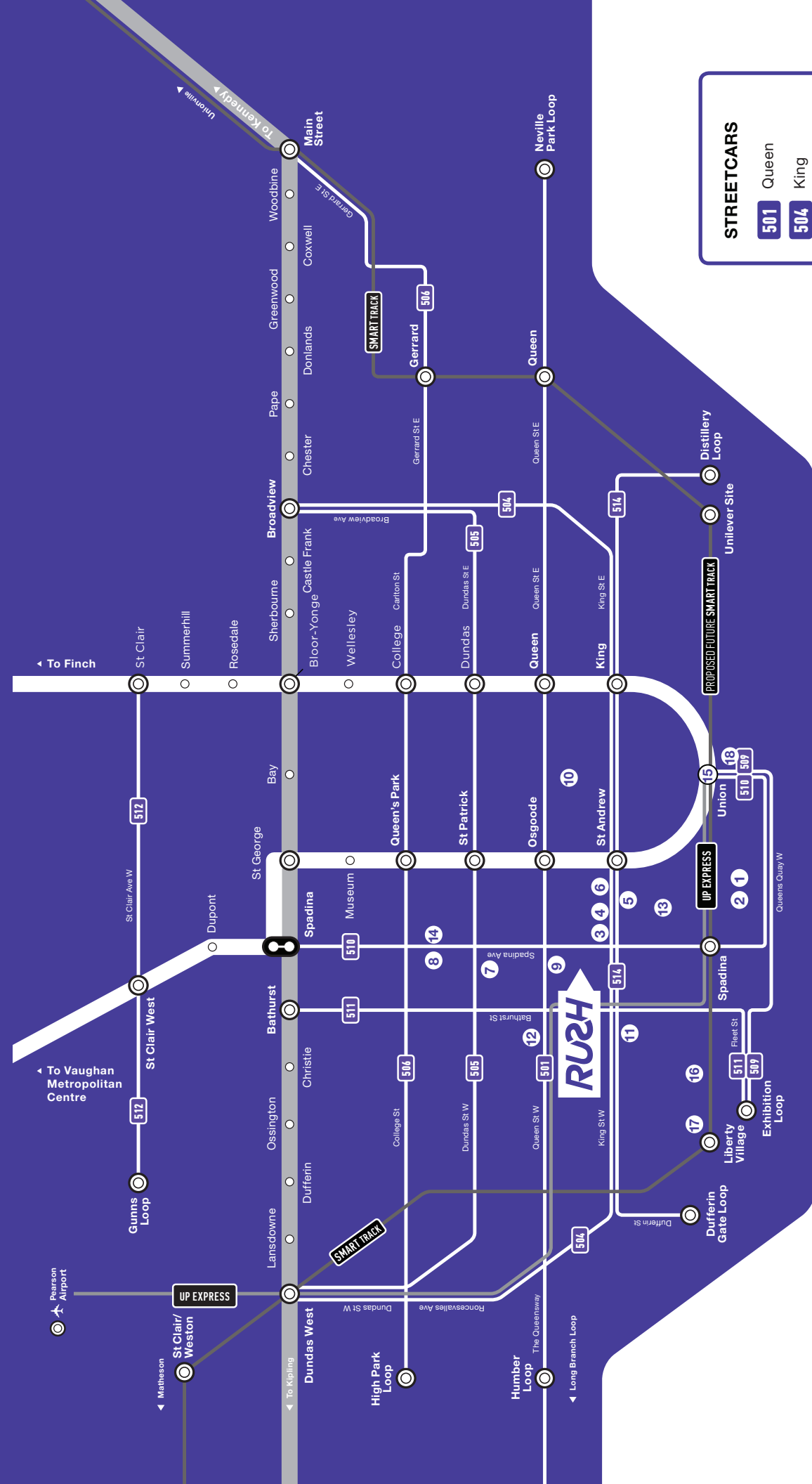
CB2

651 QUEEN W

A modern furniture and home décor store brimming with city-sized furniture and essentials. The sprawling space includes kitchen/dining and bedding/bath, too.

STROLL. CYCLE. SUBWAY.

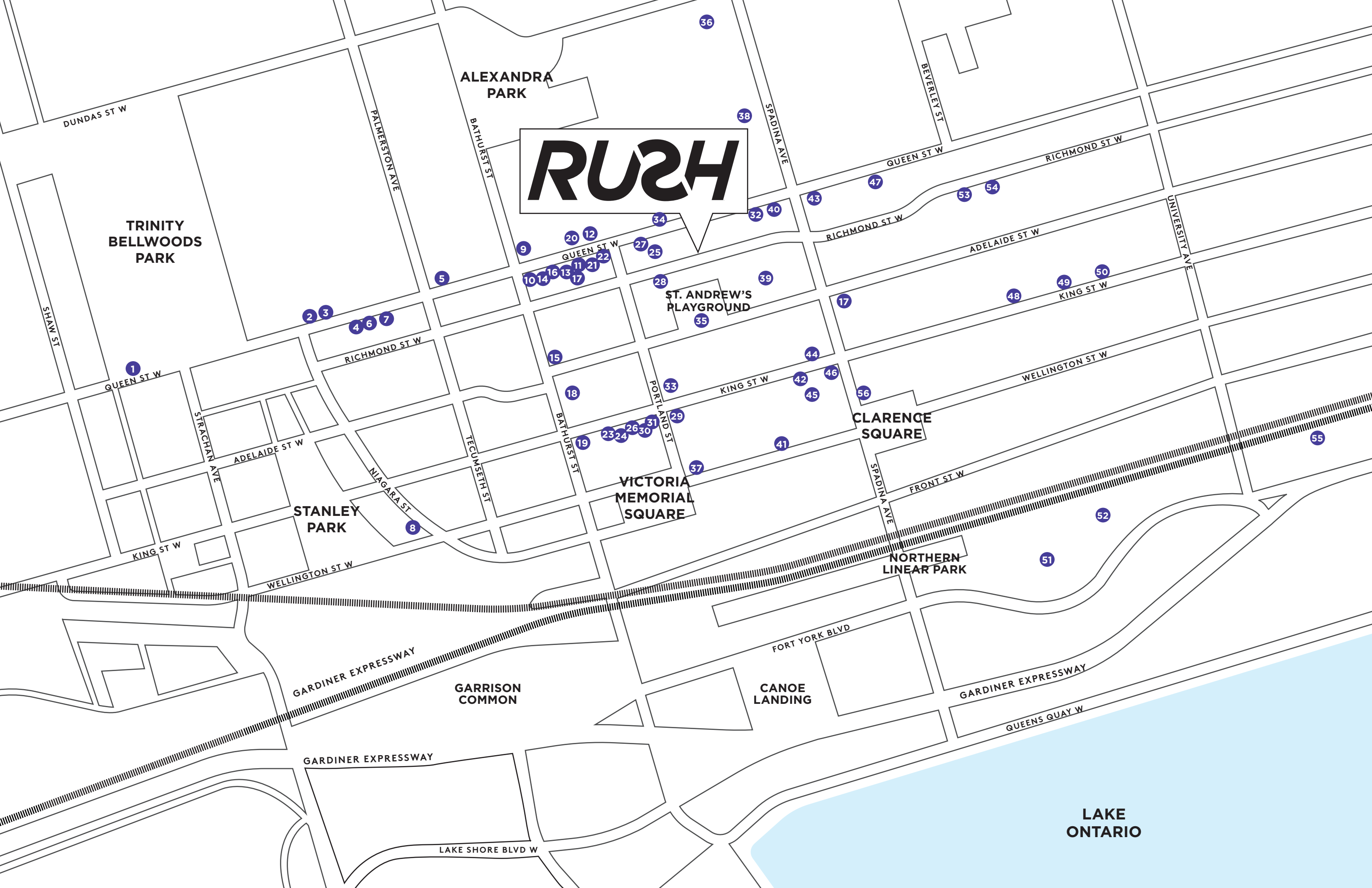
With a transit score of 100 and a walk score of 99, daily errands can be run on foot. When days require a commute, world-class public transportation will whisk you off to every corner of the city and beyond. For those who prefer two wheels, the area is graced with plenty of bike lanes and bike share locations to choose from.



STREETCARS

- 501 Queen
- 504 King
- 505 Dundas
- 506 Carlton
- 509 Harbourfront
- 510 Spadina
- 511 Bathurst
- 512 St Clair
- 514 Cherry

- 1 CN TOWER
- 2 ROGERS CENTRE
- 3 TIFF BELL LIGHTBOX
- 4 PRINCESS OF WALES THEATRE
- 5 ROY THOMSON HALL
- 6 ROYAL ALEXANDRA THEATRE
- 7 CHINATOWN
- 8 KENSINGTON MARKET
- 9 FASHION/GARMENT DISTRICT
- 10 FINANCIAL DISTRICT
- 11 KING WEST
- 12 QUEEN WEST
- 13 ENTERTAINMENT DISTRICT
- 14 BALDWIN VILLAGE
- 15 UNION STATION
- 16 FORT YORK
- 17 LIBERTY VILLAGE
- 18 SCOTIABANK ARENA



AREA AMENITIES

- | | |
|---------------------------------|------------------------------|
| 1 AESOP | 29 BAR BUCA |
| 2 TERRONI | 30 LEE |
| 3 SUD FORNO | 31 LOCALS ONLY |
| 4 HEEL BOY | 32 GRAFFITI ALLEY |
| 5 LISA MARIE | 33 THE SPOKE CLUB |
| 6 ANTHROPOLOGIE | 34 BARCHEF |
| 7 PURE BARRE | 35 ST. ANDREW'S PLAYGROUND |
| 8 EDULIS | 36 CHINATOWN |
| 9 416 SNACK BAR | 37 BAR WELLINGTON |
| 10 CB2 | 38 MAKER PIZZA |
| 11 LCBO | 39 OLD SCHOOL MUAY THAI |
| 12 SHOPPERS DRUG MART | 40 THE BURGER'S PRIEST |
| 13 BMO BANK OF MONTREAL | 41 THE ADDISONS RESIDENCE |
| 14 BARREWORKS | 42 BRASSAI |
| 15 FACTORY THEATRE | 43 DUE WEST |
| 16 EARLY BIRD COFFEE & KITCHEN | 44 WESLODGE |
| 17 STRANGE LOVE COFFEE | 45 SPIN TORONTO |
| 18 BLACKTOE RUNNING | 46 SOULCYCLE |
| 19 EFS | 47 REIGNING CHAMP |
| 20 THE DIME | 48 TIFF BELL LIGHTBOX |
| 21 LOBLAWS | 49 PRINCESS OF WALES THEATRE |
| 22 WINNERS | 50 ROYAL ALEXANDRA THEATRE |
| 23 LAVELLE | 51 ROGERS CENTRE |
| 24 WVRST | 52 CN TOWER |
| 25 ALEX WILSON COMMUNITY GARDEN | 53 SCOTIABANK THEATRE |
| 26 GOLDIE | 54 MICHAELS |
| 27 THE HEALTHY BUTCHER | 55 SCOTIABANK ARENA |
| 28 FAHRENHEIT COFFEE | 56 PETRO CANADA |



PRINCESS OF WALES THEATRE



ROYAL ALEXANDRA THEATRE



TIFF BELL LIGHTBOX



WATERFRONT



FINANCIAL DISTRICT

PLACES TO PARK



TRINITY-BELLWOODS PARK

30

TRINITY-BELLWOODS PARK

🚌 8 MIN 🚲 5 MIN 🚶 13 MIN

In the summer, you'll be hard pressed to find a square inch of green grass that isn't covered with colourful picnic blankets, or occupied by tightrope walking, rounds of Frisbee or outdoor yoga sessions. More than just a place to gather, the park has become respite for city-dwellers craving a nature connection. Plus, visitors flock to spot the illusive white squirrel.

ALEX WILSON COMMUNITY GARDEN

🚲 1 MIN 🚶 1 MIN

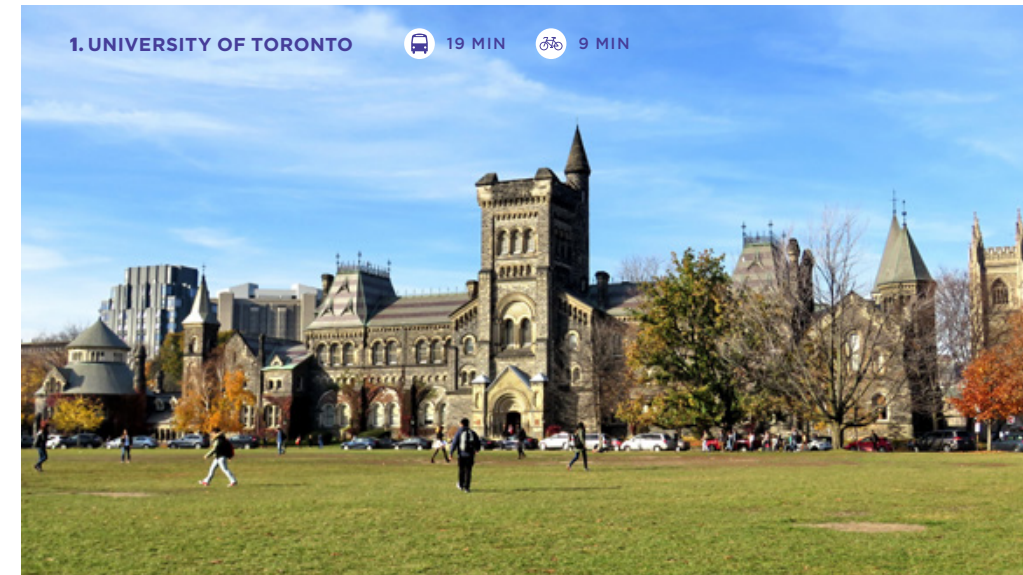
Tucked between two buildings is a 2,000 square foot sanctuary. Started in 1997, this community garden has 40 small allotments for members, a boardwalk, communal plantings of native grasses, a hedgerow and a woodland garden. Named in memoriam of Alex Wilson, a landscape designer, community activist, and writer who worked and lived in Toronto until his death in 1993, a wander through this secret garden is a must-do.



ST. ANDREW'S PLAYGROUND
🚲 3 MIN 🚶 4 MIN



STANLEY PARK
🚌 12 MIN 🚲 5 MIN 🚶 16 MIN
A CITY WITHIN A PARK
Stanley Park
845 King Street W.
Toronto Parks, Forestry & Recreation
Municipal Code Chapter 218



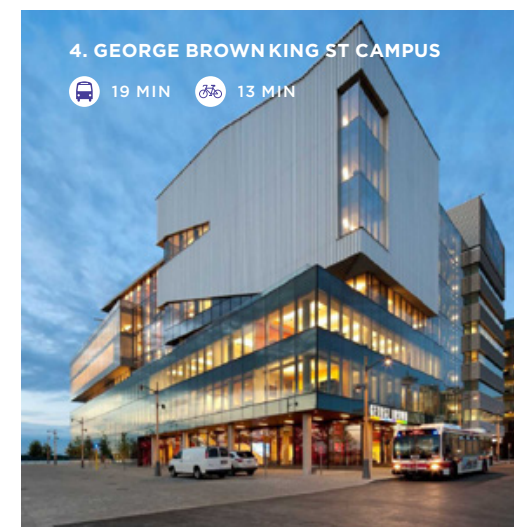
1. UNIVERSITY OF TORONTO
🚌 19 MIN 🚲 9 MIN



2. RYERSON UNIVERSITY
🚌 23 MIN 🚲 14 MIN



3. OCAD UNIVERSITY
🚲 6 MIN 🚶 17 MIN



4. GEORGE BROWN KING ST CAMPUS
🚌 19 MIN 🚲 13 MIN



5. GEORGE BROWN SPADINA
🚌 27 MIN 🚲 17 MIN

31

TOP OF THE CLASS

From colleges to universities, a variety of premier educational institutions permeate the area. While most can be reached on foot, conveniently located public transportation is an option when backpacks are bulky.

STEEPED IN HISTORY, REVOLUTIONIZED BY INNOVATION.

Mere steps away from RUSH sits the city's famed Waterworks Building. With a much-anticipated reuse development in motion, residents of RUSH will have a food hall, retail shops and a new YMCA right outside their door. Neighbouring the Waterworks Building is a 14-storey world-class boutique hotel, expected to open in 2020. The chain's first Canadian hotel will be a hub for Toronto's creative design set and an instant icon.



**RUSH PUTS YOU STEPS
AWAY FROM A DESIRED
DESTINATION.**

KING WEST.

RUSH

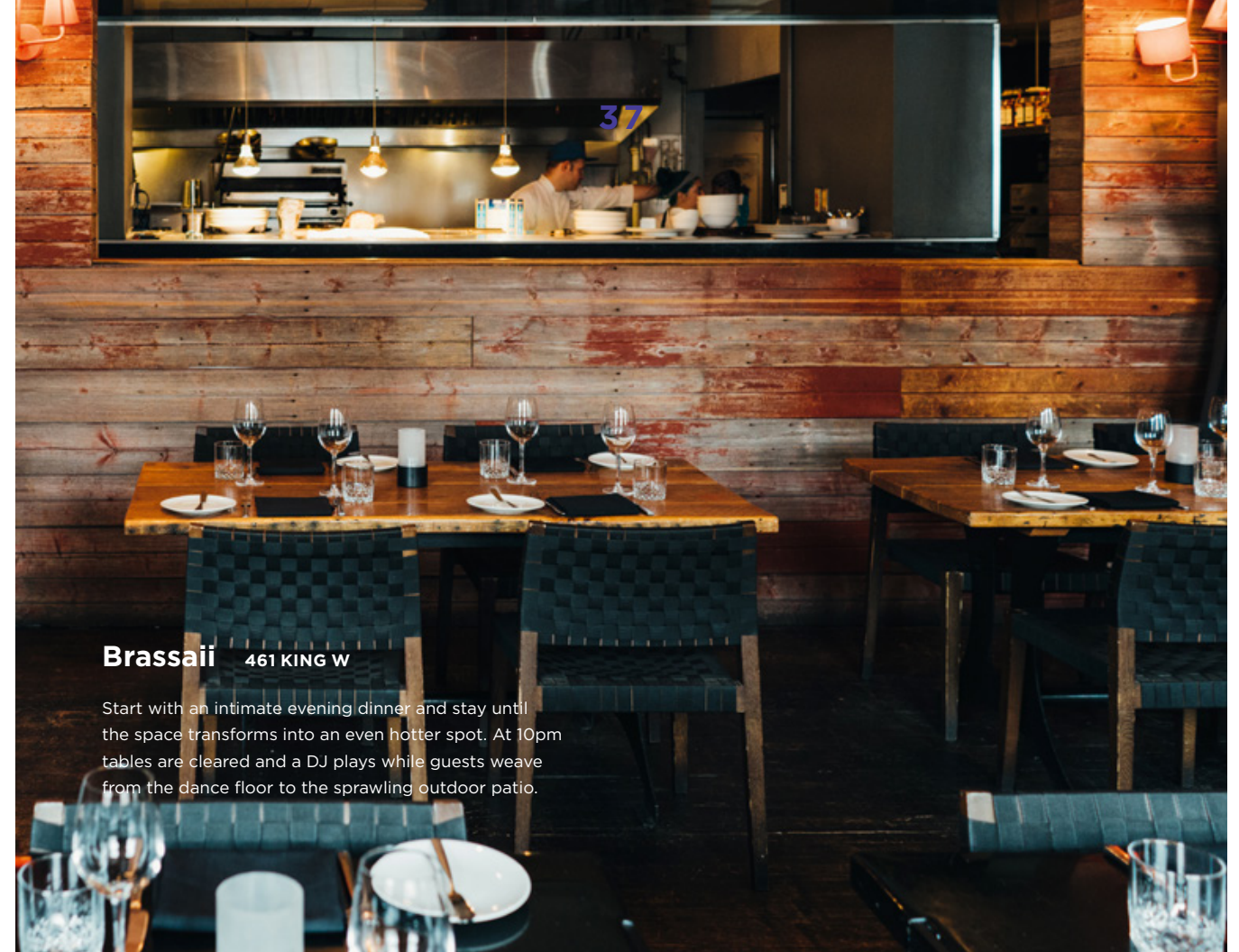
SOUTH OF RUSH IS A STREET UNTO ITSELF. A THOROUGHFARE LINED WITH BOUTIQUE BAKERIES, SWANKY BARS AND DECADENT DINING. SYNONYMOUS WITH SOPHISTICATION, KING STREET IS THE PLACE TO SEE AND BE SEEN. A STROLL DOWN KING REVEALS CHARMING LANEWAY PATIOS, CLASSIC BRICK BUILDINGS, AND A NIGHTLIFE THAT RIVALS THE LIKES OF NEW YORK CITY.

A RUSH OF ADRENALINE

Goldie 619 KING W

Filled with Instagram-rich photo opportunities, Goldie is as gorgeous as it is fun. Located in a century old townhouse in the heart of King West, the multi-level cocktail bar and lounge is a celebration of style and sophistication.

RUSH — 520 RICHMOND W



Brassai 461 KING W

Start with an intimate evening dinner and stay until the space transforms into an even hotter spot. At 10pm tables are cleared and a DJ plays while guests weave from the dance floor to the sprawling outdoor patio.

EFS 647 KING W

A rotation of the finest DJs spin in the nightclub that sits underneath the identically-named rooftop patio - a gorgeously decorated space, tucked away from the sights and sounds of King Street.



ALTERRA — DEFINING URBAN LIVING

Lee 601 KING W

Named for Susur Lee, one of Canada's most renowned chefs, an intriguing range of French and Asian influenced food spills out of the buzzing kitchen. The menu is created for sharing, allowing you to sample a little bit of everything.

**Buca** 604 KING W

Rustic Italian fare served in a high-end setting. Tucked away from bustling King St, expect dishes bursting with flavour, fresh ingredients and scissors for perfect pie-cutting.

**WVRST** 609 KING W

A modern beer hall specializing in artisan sausages, craft beer and good times. Bavarian-inspired, the restaurant's communal tables are ideal for large parties and meeting new friends.

**Bar Wellington** 520 WELLINGTON W

Affectionately known as The Welly, neighbourhood residents flock here for the patio, drinks menu, and gastropub eats. Set in a gracious Victorian home, it's a notorious meeting place for advertising and design types and the occasional movie star.

Weslodge 480 KING W

A long list of libations, elevated saloon food, and a lot of vibe, this is the place to see and be seen. Modern and marvellous, enter through the electrifying yellow doors and a notable night awaits.

Edulis 169 NIAGARA

A seasonal menu of wild and foraged foods in the coziest dining room. Warm and intimate, go here for exceptional Mediterranean and Spanish influenced cooking.



The Addisons Residence 456 WELLINGTON W

Fine art and retro décor are matched with board games, air hockey and foosball. This lounge-meets-club is divided into a kitchen area, living room and rec room, resulting in the best house party you've ever been to.

The Spoke Club 600 KING W

Media types and creatives flock to this discreet 5-storey space that also offers memberships. Apart from dinners, DJs and dancing, this is a thriving meeting place where people with interests in entertainment and the arts can converge.

Locals Only 589 KING W

Scraps of neon, graffiti, and shipping containers characterize Locals Only, a neighbourhood favourite with an industrial vibe. While the food is delicious and the drink list long, the main event here is the washroom. Inside, you'll find the most Instagrammable wall art, fit for a perfect selfie moment.

RUSH — 520 RICHMOND W



Lavalle 627 KING W

A swanky rooftop lounge complete with a pool, splendid skyline views, and French food. Need we say more?

ALTERRA — DEFINING URBAN LIVING

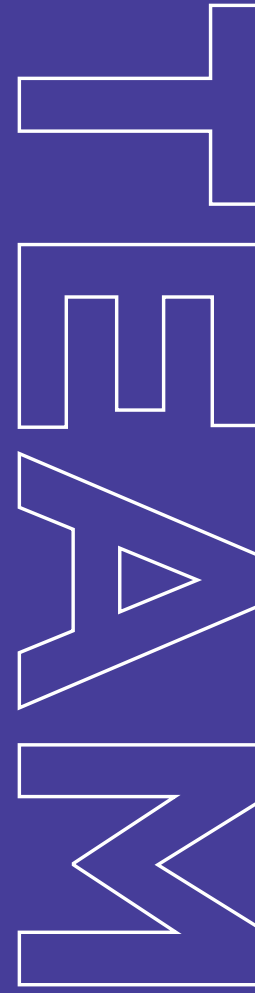


Quadrangle

Founded in 1986, Quadrangle is a full-service architecture and interior design firm with projects spanning the commercial, mixed-use, multi-unit residential, content media and retail markets, with expert specializations in areas that include master planning, feasibility studies, accessibility, sustainability and adaptive reuse. In conceiving RUSH, Quadrangle and Alterra worked collaboratively to create a singular, boutique condominium rich in character that would complement the bordering neighbourhoods.

“Continuing the successful nine-year relationship between Alterra and Quadrangle, RUSH testifies to our shared goal of delivering contextually designed residences that harmoniously integrate with the fabric of the neighbourhood while maintaining a unique identity.”

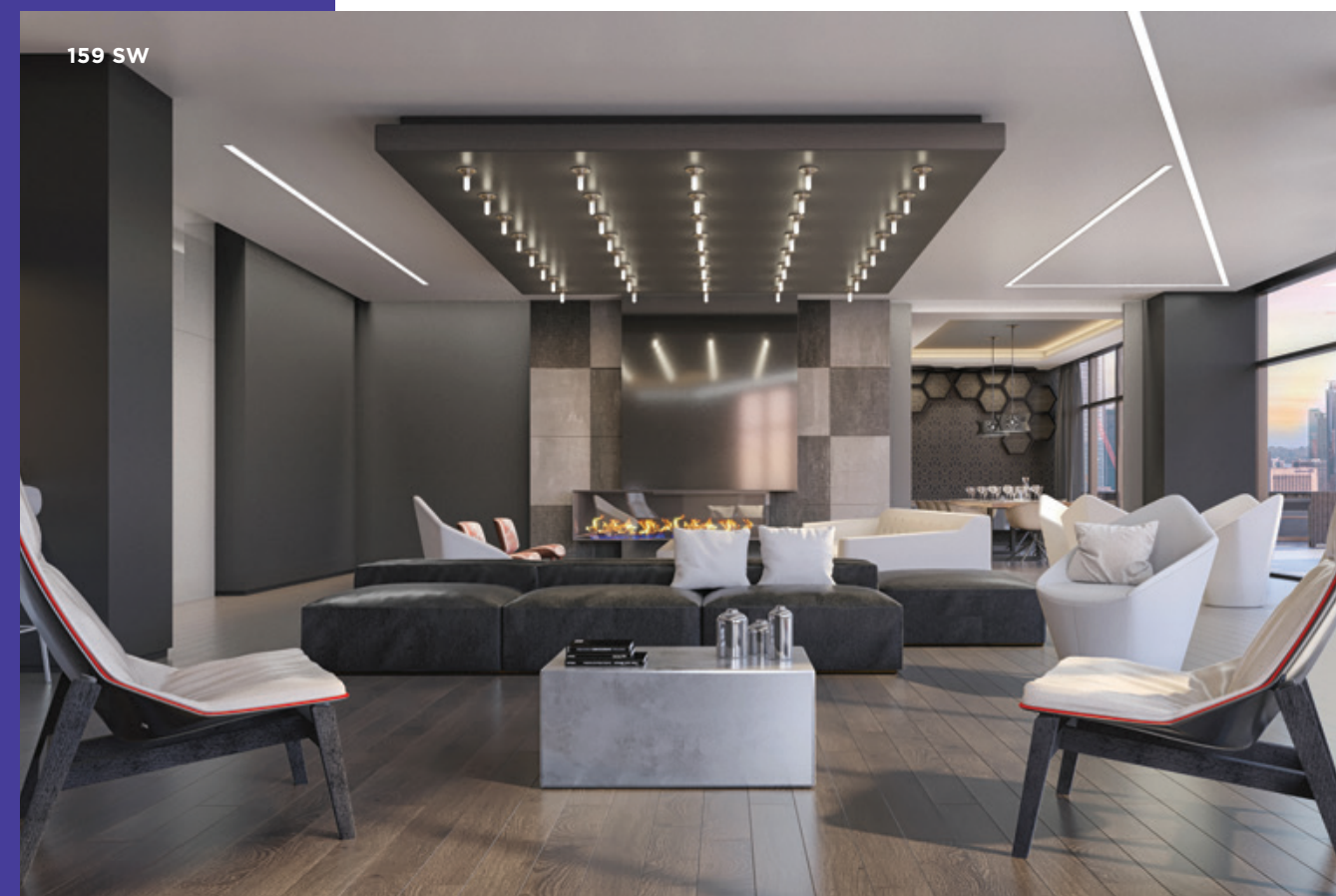
ALTERRA HANDPICKS INDUSTRY LEADERS TO HELP MATERIALIZE THEIR UNRIVALED CONDOMINIUM LIVING CONCEPTIONS.



U31

U31 is an award winning interior architecture and design studio led by creative principles, Kelly Cray and Neil Jonsohn. The firm focuses on diverse commercial, residential and hospitality projects for clients across the globe, including luxury homes and large scale mixed use developments. With over three decades of industry experience and proven accomplishments, U31 continuously challenges convention, while seeking to satisfy clients needs and going beyond their expectations.

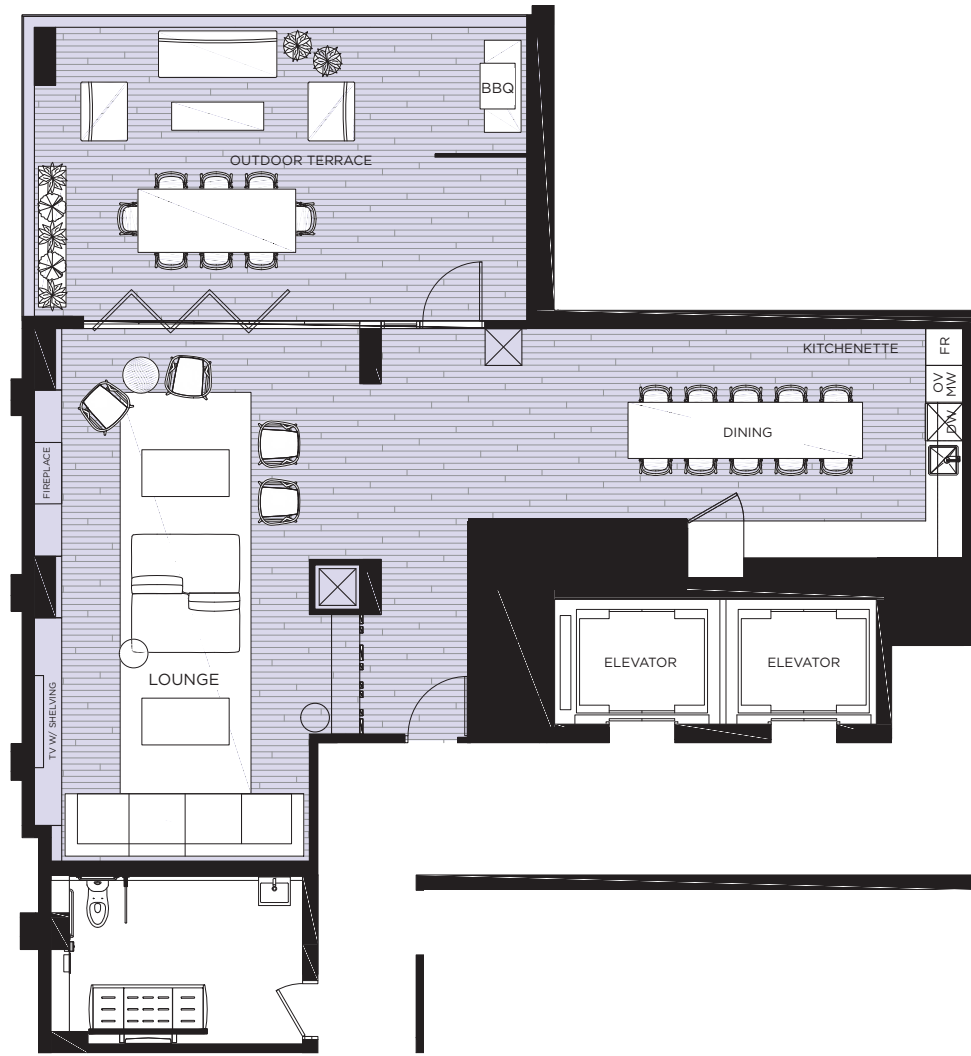
“Edgy, contemporary with high-contrast defines our vision for the interiors. Inspired by the dichotomy of Street art and refined materials, our design aims to capture the brand mission statement “collision of culture”. Concrete surfaces, combined with natural stone, graffiti feature walls and fashion forward accents creates a casual, yet hip downtown residence. The spaces are inherently dramatic - weaving dark and light, raw and sleek and a dose of the unexpected.”



AMENITY PLAN

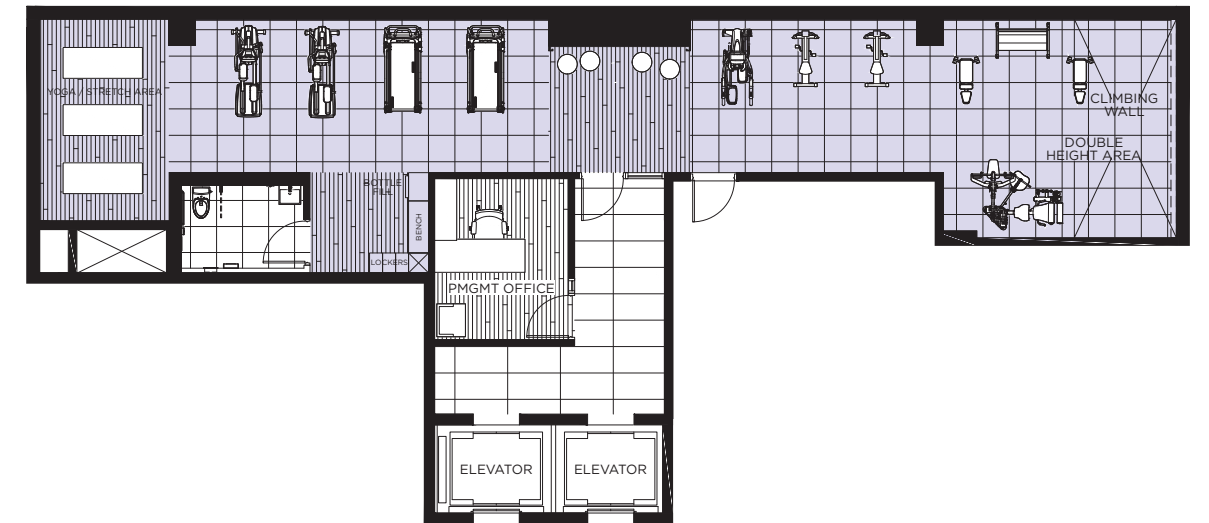
44

PARTY ROOM

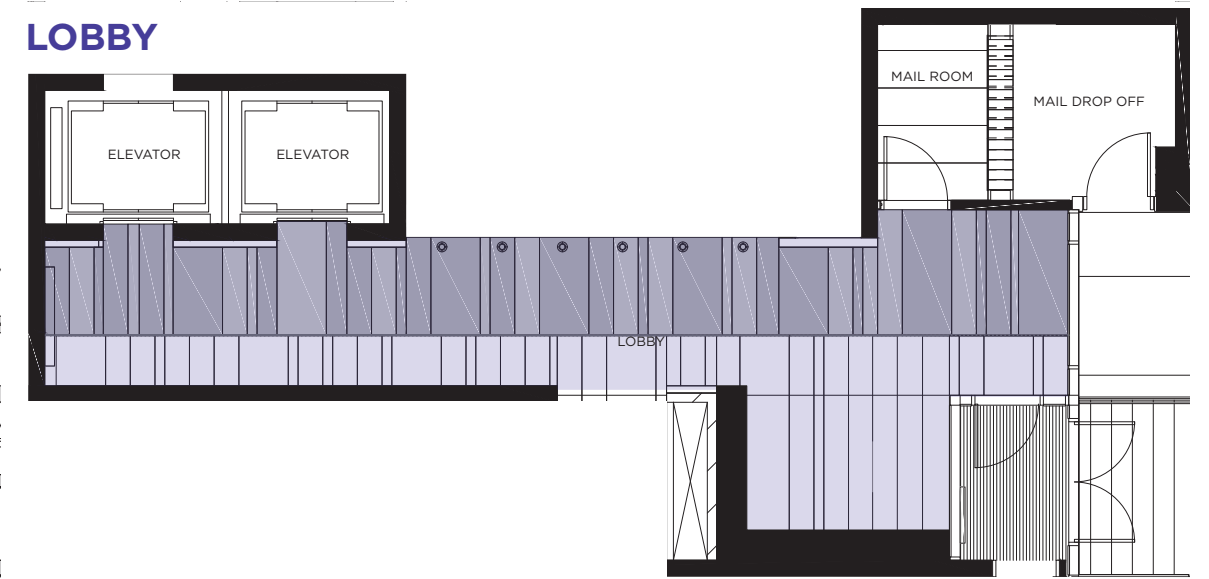


RUSH — 520 RICHMOND W

FITNESS CENTRE



LOBBY



PLAN IS NOT TO SCALE AND ALL ILLUSTRATIONS ARE ARTIST CONCEPT ONLY.

ALTERRA — DEFINING URBAN LIVING

45

WEL- COME HOME

LOBBY

RUSH's coolly contemporary lobby is characterized by swaths of marble and glass. Designed in a sleek, tonal palette of white, black and grey, it's a gorgeous first impression.



PARTY ROOM

LOW PARTY THROUGH A PARTY

48



Illustration is artist's concept only. E. & O. E.



Illustration is artist's concept only. E. & O. E.

Entertain guests against a beautiful backdrop in a warm and inviting party room. Make memories in an open, airy space deliberately dotted with stylish seating, plush sofas and a generously sized dining table. Complete with a glowing fireplace, outdoor terrace, and BBQ, playing host has never been easier.

PARTY ROOM



RUSH — 520 RICHMOND W

ALTERRA — DEFINING URBAN LIVING

Illustration is artist's concept only. E. & O. E.



Illustration is artist's concept only. E. & O. E.

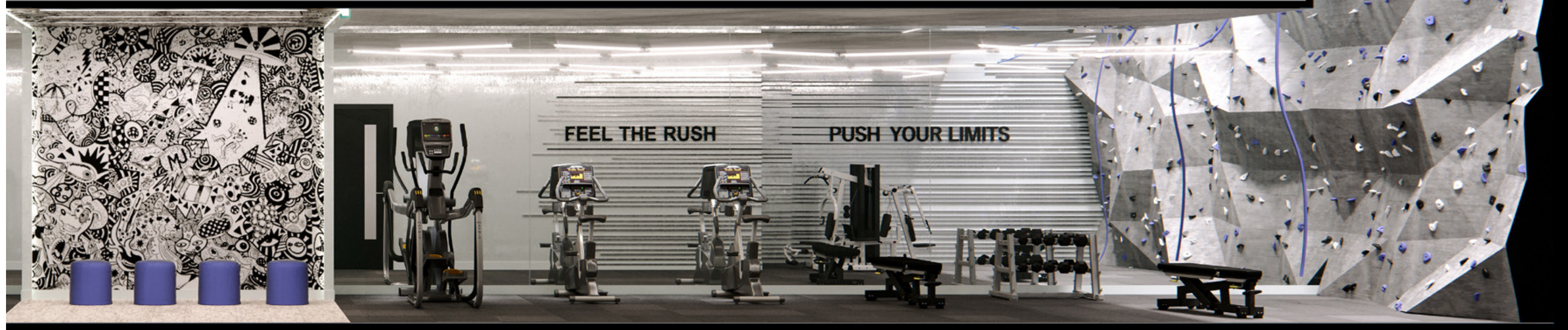


PARTY ROOM KITCHEN / DINING

Illustration is artist's concept only. E. & O. E.

FITNESS CENTRE

Whether you prefer weights, cardio or yoga, RUSH's state-of-the-art fitness centre is designed for endorphin-boosting workouts. Exhale the day's demands, and test your skills with a challenging but rewarding climb on the gym's rock climbing wall.



FINE-TUNE YOUR FITNESS

RUSH — 520 RICHMOND W



Illustration is artist's concept only. E. & O. E.

Illustration is artist's concept only. E. & O. E.



Illustration is artist's concept only. E. & O. E.

KITCHEN, DINING & LIVING ROOM

RUSH — 520 RICHMOND W

ALTERRA — DEFINING URBAN LIVING

RESURFACE

FEATURES & FINISHES

SUITE FEATURES

- Custom-designed modern European style cabinetry with integrated fridge and dishwasher.
- Upgraded Kitchen soft close door and drawer system.
- Stainless steel wall oven and induction cooktop.
- Engineered quartz Kitchen countertop.
- Integrated LED under cabinet lighting system in Kitchen.
- Wide single plank designer-selected laminate flooring throughout suite except tiled areas.
- Modern white floating vanity cabinets with integrated open towel shelf below.
- Matte black finish faucets.
- Choice of exposed concrete ceilings or painted white ceilings for non dropped ceiling areas.
- Thermally insulated energy efficient windows.
- For improved indoor air quality and energy savings, an in-suite energy recovery ventilation system is provided.

BUILDING FEATURES

- Conveniently located within steps to TTC, restaurants and parks.
- High speed internet service with advanced WI-FI modem included in all suites plus WI-FI access throughout amenity areas.
- Fully appointed Fitness Centre with Yoga Stretch Area and Climbing Wall.
- Party Room with Dining area.
- Outdoor Terrace with BBQ area.

RUSHCONDOS.COM

A COLLIS
RUSH
OF