

KING

HOME 705 N



ST.01

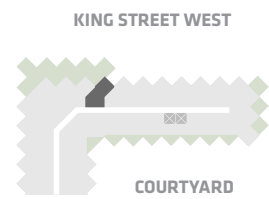
**Studio
1 Bathroom**

**Total Living:
533 ft²**

Interior Living:
390 ft²

Exterior Living:
143 ft²

LIVING/ BEDROOM	10' 11" X 9' 3"
DINING	8' 2" X 6' 4"
TERRACE	9' 1" X 6' 8"



NORTH MOUNTAIN KEYPLAN



All dimensions and specifications are approximate. Certain plans are reverse or mirror image. Balcony square footages are estimated and may vary from that stated. Please see Sales Representative for details. Furniture not included. Refer to key plan for unit location and orientation. E. & O.E.

KING

HOME 507 N



1BD.23

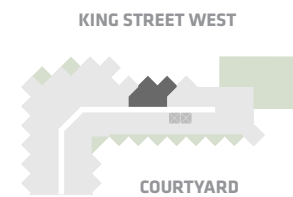
1 Bedroom
1 Bathroom

Total Living:
806 ft²

Interior Living:
735 ft²

Exterior Living:
72 ft²

LIVING	12' 0" X 10' 0"
DINING	8' 2" X 6' 5"
BEDROOM	9' 10" X 8' 8"
BALCONY	11' 0" X 4' 11"



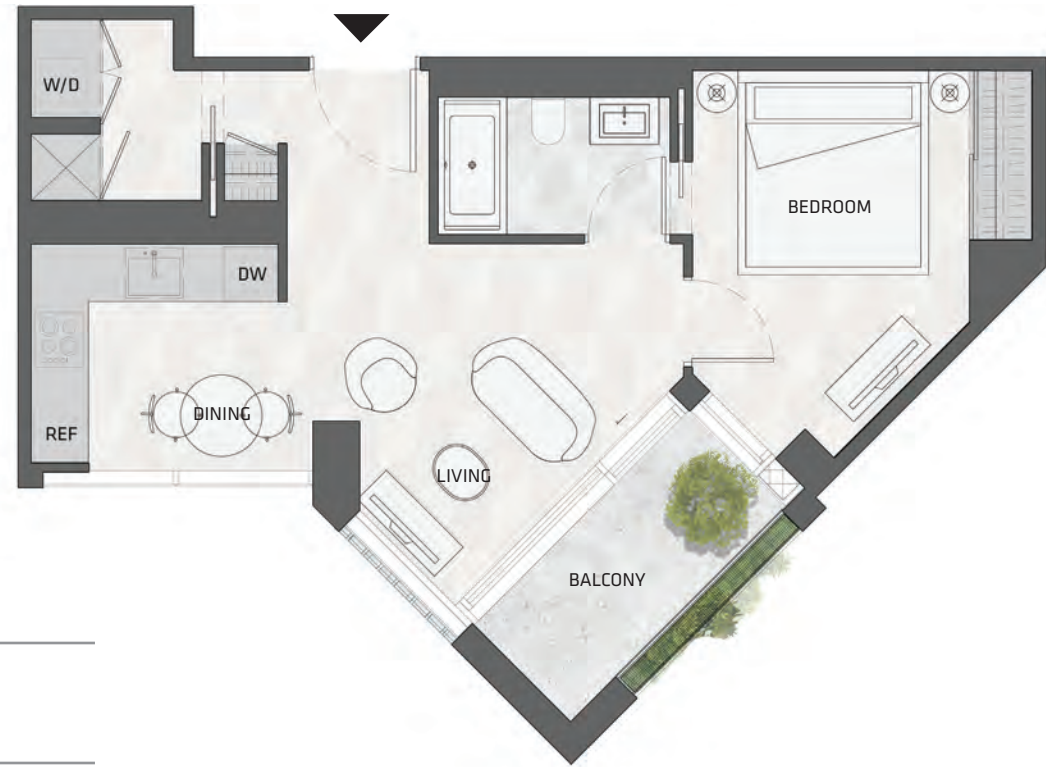
NORTH MOUNTAIN KEYPLAN



All dimensions and specifications are approximate. Certain plans are reverse or mirror image. Balcony square footages are estimated and may vary from that stated. Please see Sales Representative for details. Furniture not included. Refer to key plan for unit location and orientation. E. & O.E.

KING

HOME 508 N



1BD.70

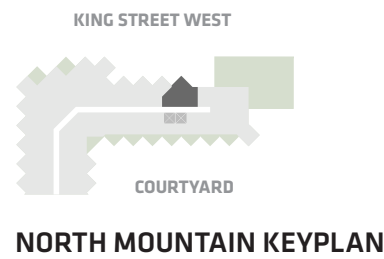
1 Bedroom
1 Bathroom

Total Living:
647 ft²

Interior Living:
575 ft²

Exterior Living:
72 ft²

LIVING	12' X 11" x 9' 4"
DINING	9' 10" x 12' 7"
BEDROOM	11' 5" x 10' 2"
ATELIER	6' 9" X 8' 2"



All dimensions and specifications are approximate. Certain plans are reverse or mirror image. Balcony square footages are estimated and may vary from that stated. Please see Sales Representative for details. Furniture not included. Refer to key plan for unit location and orientation. E. 6 O.E.

KING

HOME 509 N



1BD.37

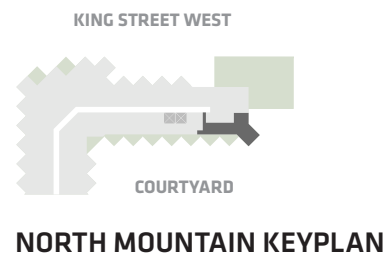
1 Bedroom
1 Bathroom

Total Living:
859 ft²

Interior Living:
681 ft²

Exterior Living:
178 ft²

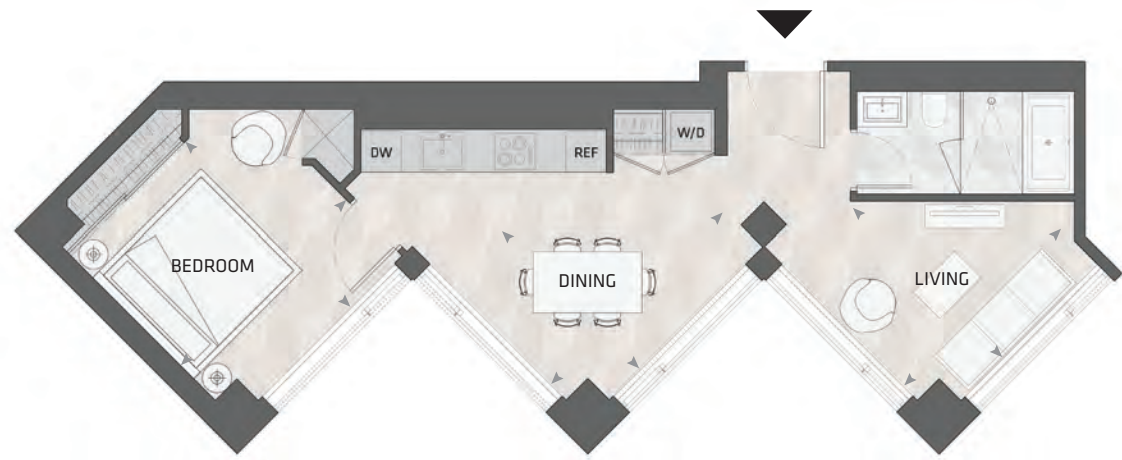
LIVING	10' 2" X 9' 5"
DINING	20' 0" X 6' 11"
BEDROOM	11' 10" X 8' 11"
BALCONY	13' 0" X 7' 9"



All dimensions and specifications are approximate. Certain plans are reverse or mirror image. Balcony square footages are estimated and may vary from that stated. Please see Sales Representative for details. Furniture not included. Refer to key plan for unit location and orientation. E. & O.E.

KING

HOME 1105 N



1BD.73

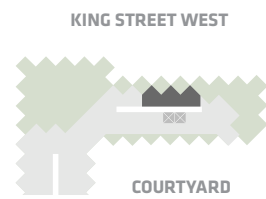
1 Bedroom
1 Bathroom

Total Living:
686 ft²

Interior Living:
686 ft²

Exterior Living:
N/A

LIVING 10' 11" X 12' 0"
DINING 12' 0" X 10' 11"
BEDROOM 11' 4" X 11' 4"



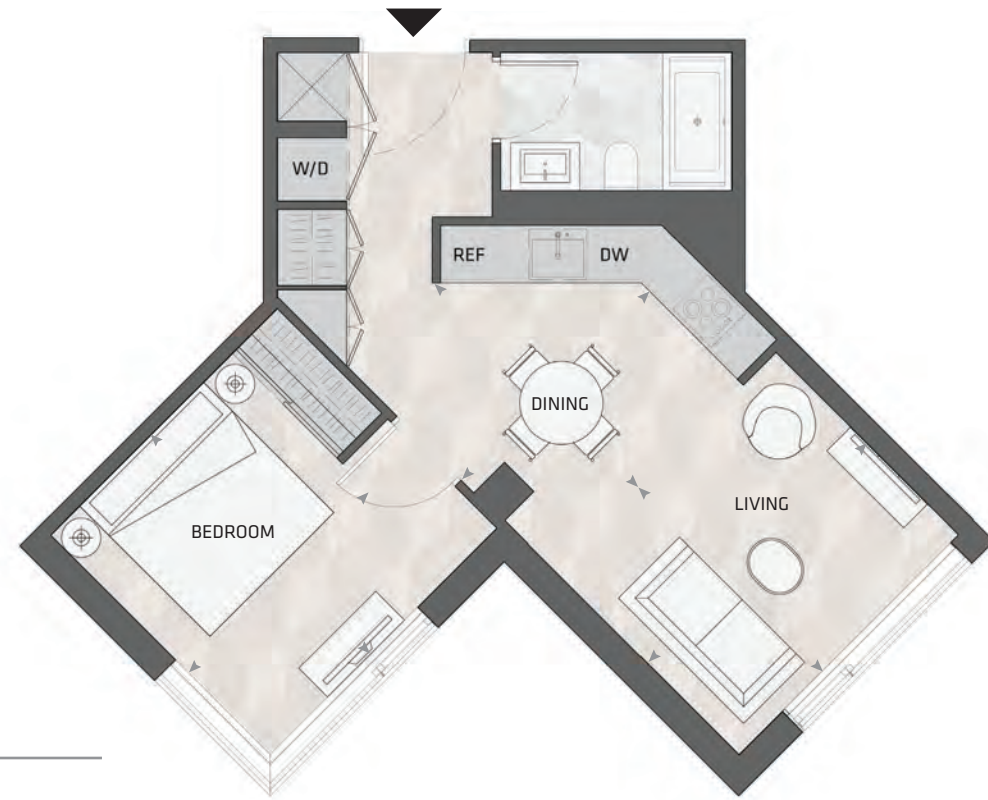
NORTH MOUNTAIN KEYPLAN



All dimensions and specifications are approximate. Certain plans are reverse or mirror image. Balcony square footages are estimated and may vary from that stated. Please see Sales Representative for details. Furniture not included. Refer to key plan for unit location and orientation. E. & O.E.

KING

HOME 906 N



1BD.09A

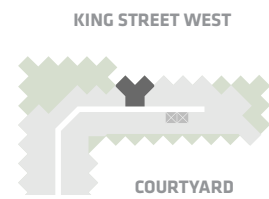
1 Bedroom
1 Bathroom

Total Living:
554 ft²

Interior Living:
554 ft²

Exterior Living:
N/A

LIVING 11' 8" X 9' 6"
DINING 8' 8" X 10' 5"
BEDROOM 9' 3" X 11' 2"



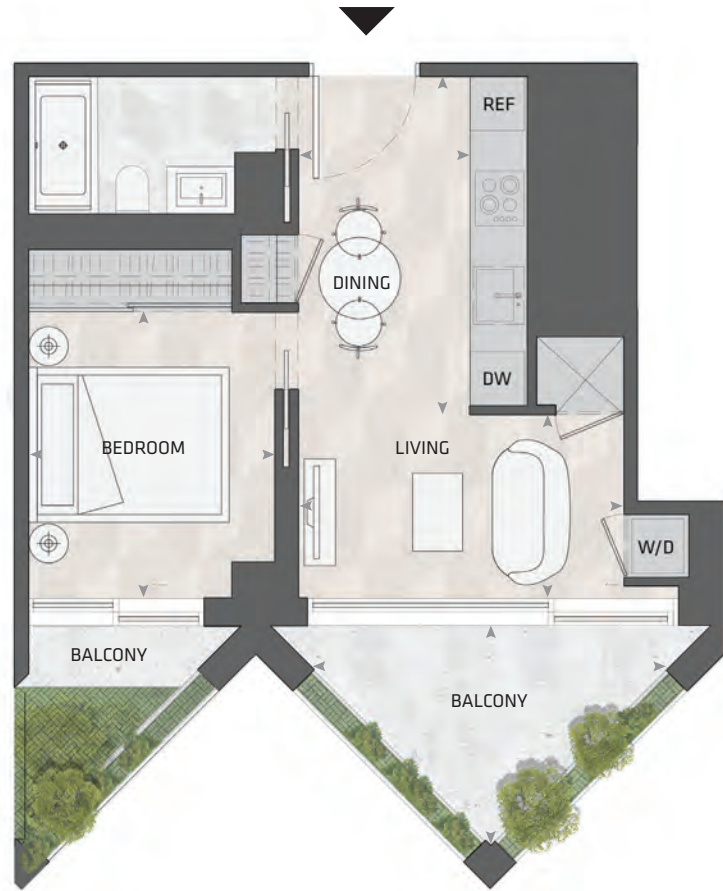
NORTH MOUNTAIN KEYPLAN



All dimensions and specifications are approximate. Certain plans are reverse or mirror image. Balcony square footages are estimated and may vary from that stated. Please see Sales Representative for details. Furniture not included. Refer to key plan for unit location and orientation. E. & O.E.

KING

HOME 1101 N



1BD.12B

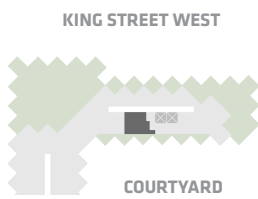
**1 Bedroom
1 Bathroom**

**Total Living:
583 ft²**

Interior Living:
451 ft²

Exterior Living:
132 ft²

LIVING	6' 10" x 10' 9"
DINING	6' 2" x 12' 2"
BEDROOM	8' 11" x 10' 6"
BALCONY	13' 0" x 7' 9"



NORTH MOUNTAIN KEYPLAN



All dimensions and specifications are approximate. Certain plans are reverse or mirror image. Balcony square footages are estimated and may vary from that stated. Please see Sales Representative for details. Furniture not included. Refer to key plan for unit location and orientation. E. & O.E.

KING

HOME 1102 N



1BD.86

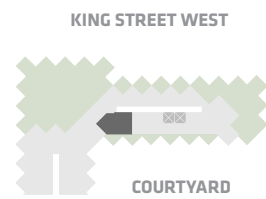
1 Bedroom
1 Bathroom

Total Living:
687 ft²

Interior Living:
555 ft²

Exterior Living:
132 ft²

LIVING	11' 6" X 15' 1"
DINING	11' 10" X 9' 2"
BEDROOM	9' 6" X 10' 0"
BALCONY	13' 0" X 7' 9"



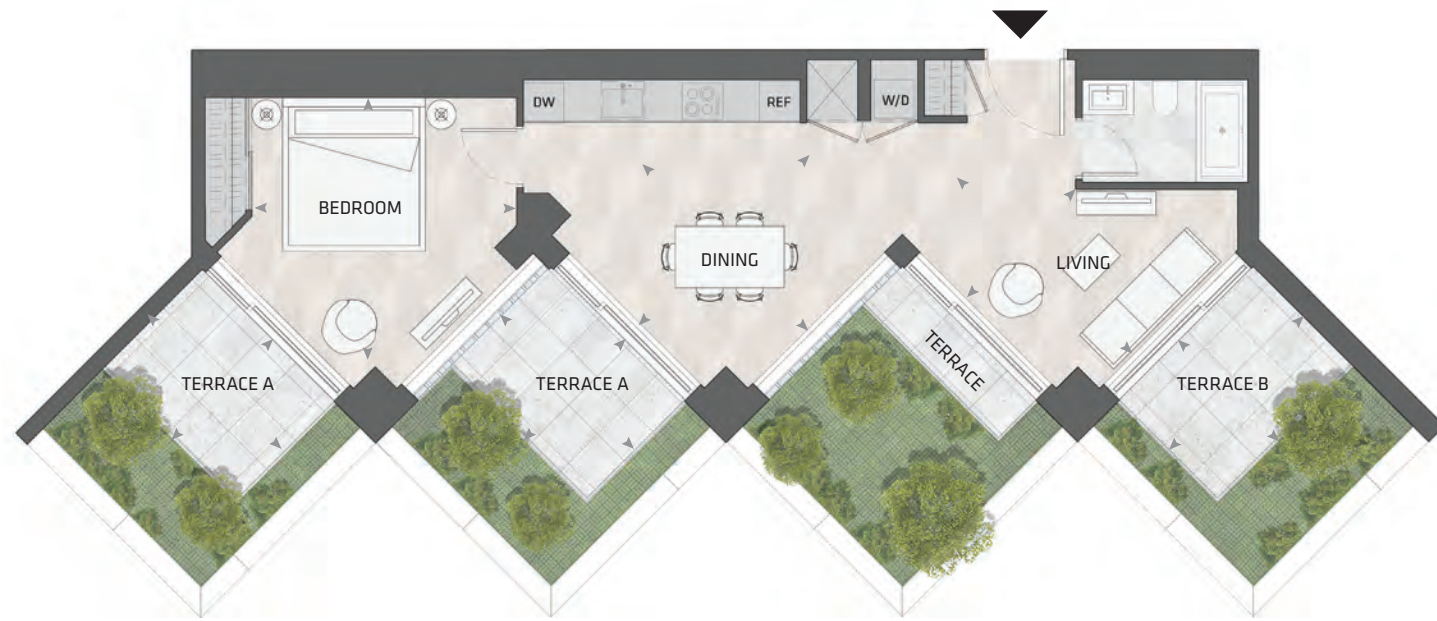
NORTH MOUNTAIN KEYPLAN



All dimensions and specifications are approximate. Certain plans are reverse or mirror image. Balcony square footages are estimated and may vary from that stated. Please see Sales Representative for details. Furniture not included. Refer to key plan for unit location and orientation. E. 6 O.E.

KING

HOME 1005 N



1BD.71

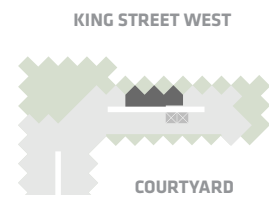
1 Bedroom
1 Bathroom

Total Living:
1161 ft²

Interior Living:
730 ft²

Exterior Living:
430 ft²

LIVING	7' 6" x 12' 0"
DINING	12' 0" x 12' 0"
BEDROOM	13' 0" x 12' 9"
TERRACE A	6' 8" x 9' 1"
TERRACE B	9' 1" x 6' 8"



NORTH MOUNTAIN KEYPLAN



All dimensions and specifications are approximate. Certain plans are reverse or mirror image. Balcony square footages are estimated and may vary from that stated. Please see Sales Representative for details. Furniture not included. Refer to key plan for unit location and orientation. E. & O.E.

KING

HOME 907 N



1BD.10A

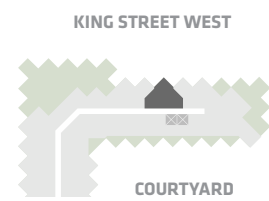
1 Bedroom
1 Bathroom

Total Living:
612 ft²

Interior Living:
540 ft²

Exterior Living:
72 ft²

LIVING	12' 0" X 7' 8"
DINING	7' 10" X 7' 9"
BEDROOM	8' 8" X 8' 8"
BALCONY	11' 0" X 4' 11"



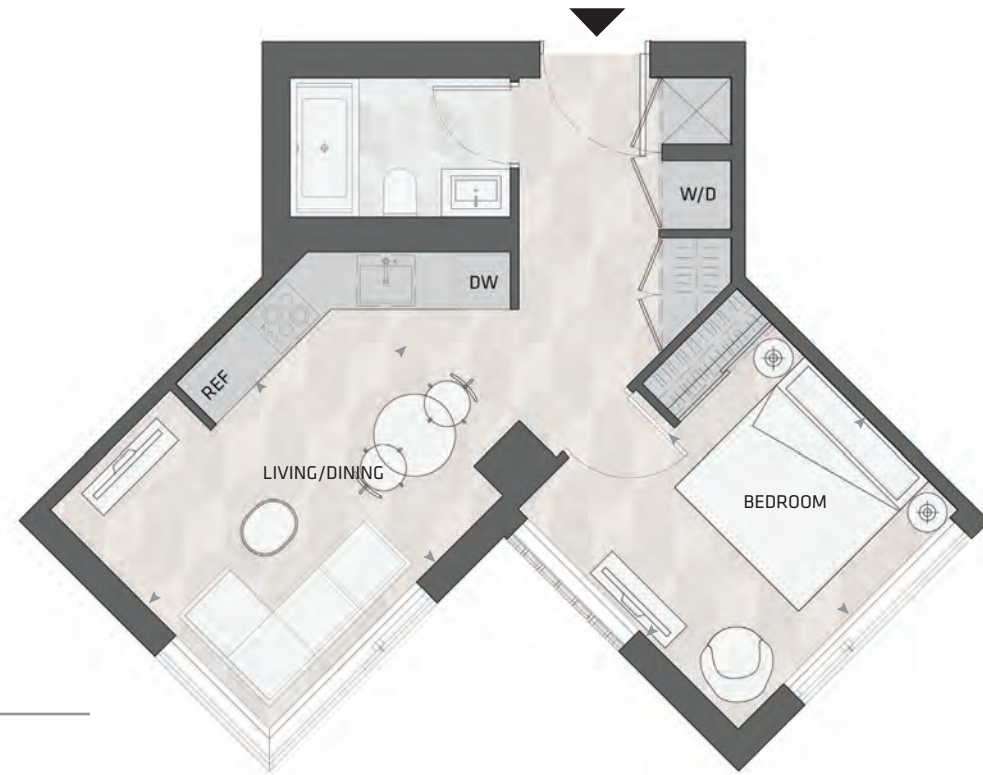
NORTH MOUNTAIN KEYPLAN



All dimensions and specifications are approximate. Certain plans are reverse or mirror image. Balcony square footages are estimated and may vary from that stated. Please see Sales Representative for details. Furniture not included. Refer to key plan for unit location and orientation. E. & O.E.

KING

HOME 908 N



1BD.09B

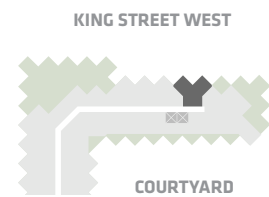
1 Bedroom
1 Bathroom

Total Living:
535 ft²

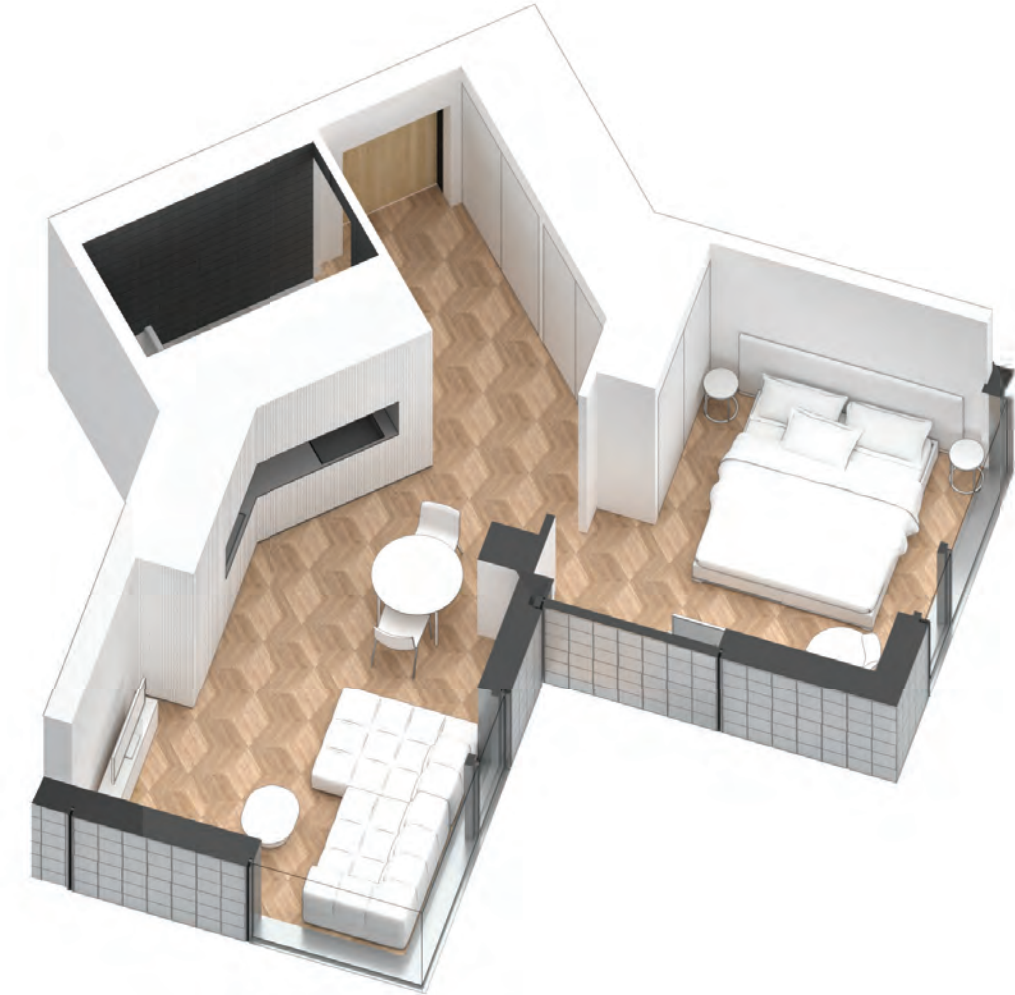
Interior Living:
535 ft²

Exterior Living:
N/A

**LIVING/
DINING** 17' 4" X 11' 2"
BEDROOM 11' 2" X 9' 3"



NORTH MOUNTAIN KEYPLAN



All dimensions and specifications are approximate. Certain plans are reverse or mirror image. Balcony square footages are estimated and may vary from that stated. Please see Sales Representative for details. Furniture not included. Refer to key plan for unit location and orientation. E. & O.E.

KING

HOME 503 N



1BD.79A

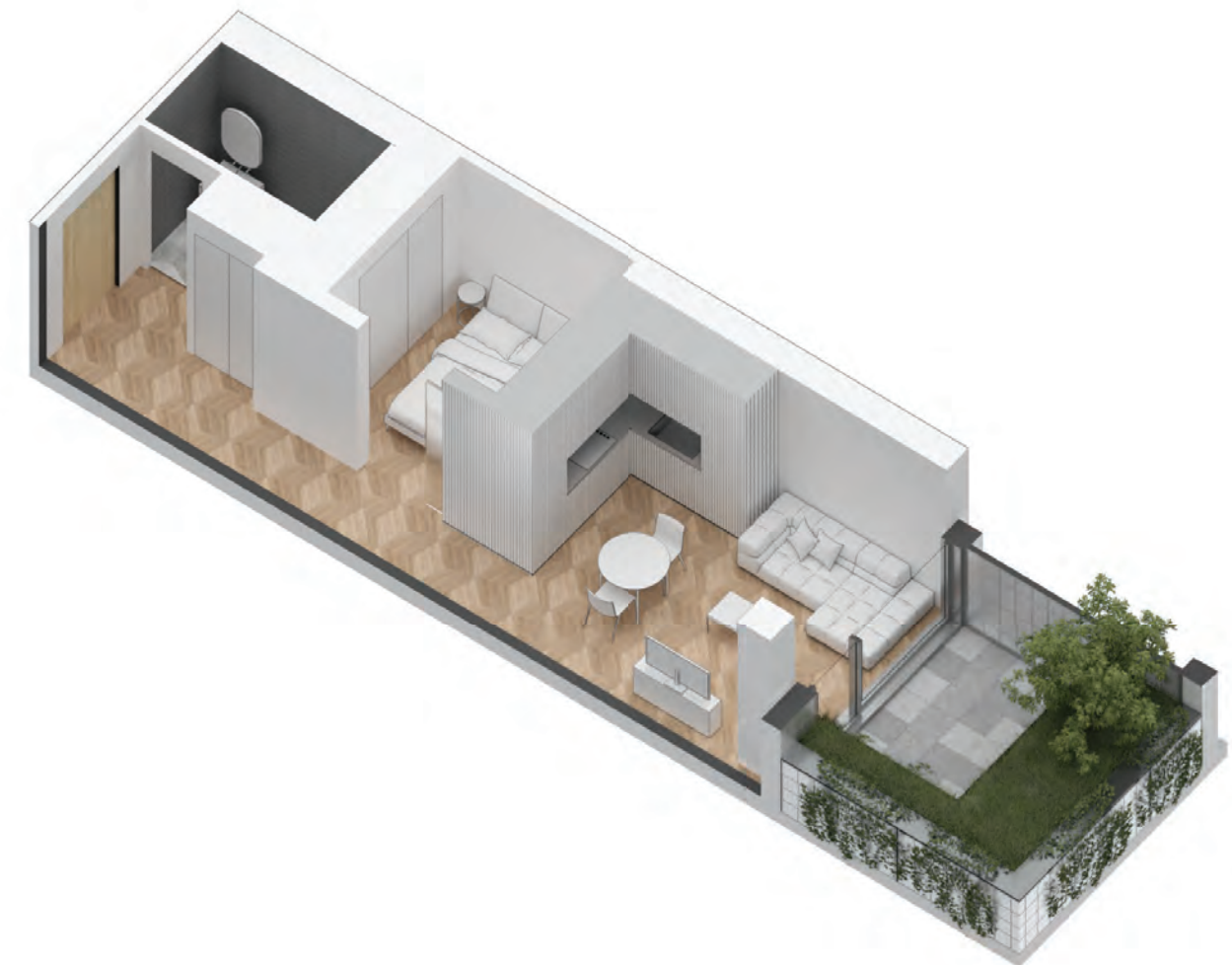
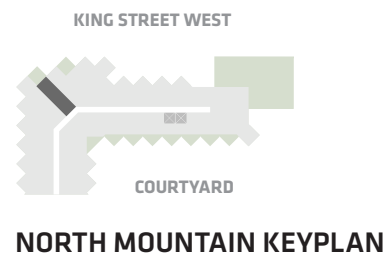
1 Bedroom
1 Bathroom

Total Living:
620 ft²

Interior Living:
477 ft²

Exterior Living:
143 ft²

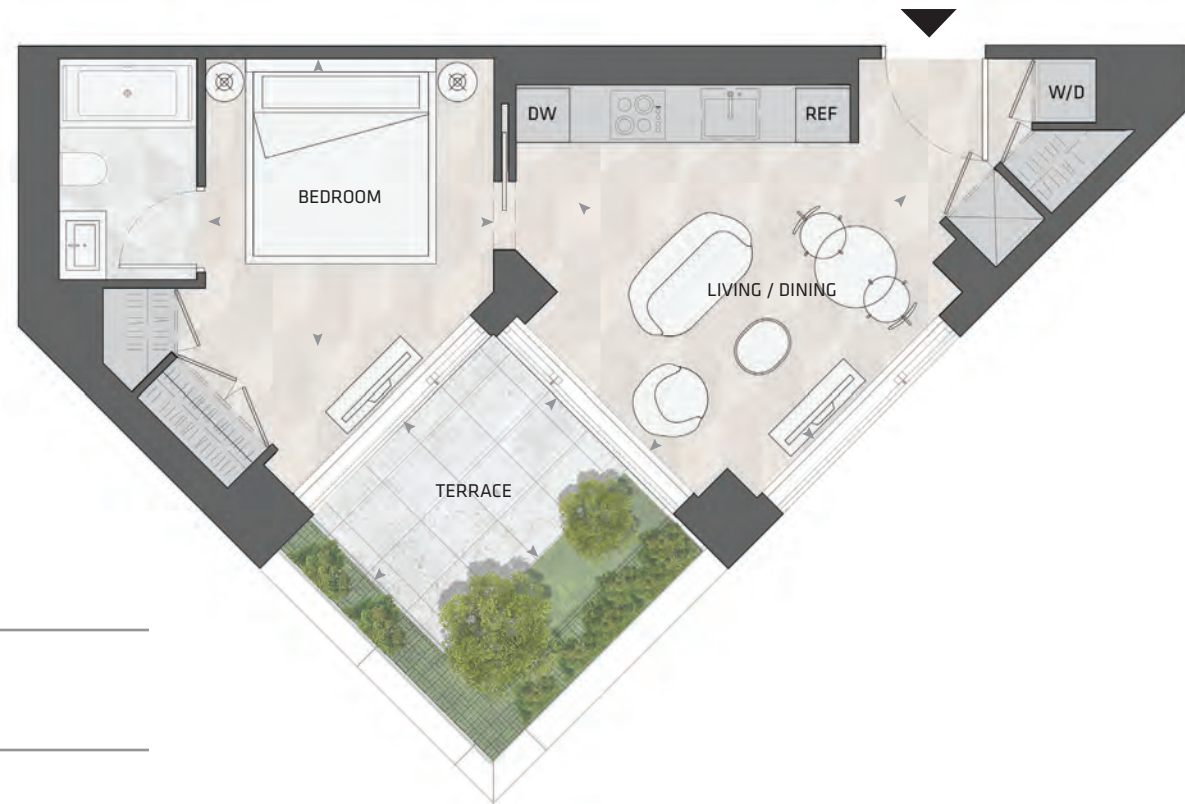
LIVING	8' 2" X 11' 9"
DINING	5' 9" X 9' 8"
BEDROOM	8' 6" X 8' 8"
TERRACE	6' 8" X 9' 1"



All dimensions and specifications are approximate. Certain plans are reverse or mirror image. Balcony square footages are estimated and may vary from that stated. Please see Sales Representative for details. Furniture not included. Refer to key plan for unit location and orientation. E. & O.E.

KING

HOME 905 N



1BD.25

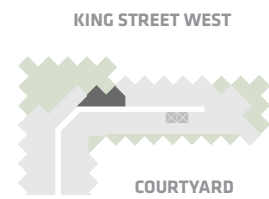
1 Bedroom
1 Bathroom

Total Living:
672 ft²

Interior Living:
529 ft²

Exterior Living:
143 ft²

LIVING/ DINING	13' 2" X 12' 6"
BEDROOM	10' 5" X 10' 6"
TERRACE	9' 1" X 6' 8"



NORTH MOUNTAIN KEYPLAN



All dimensions and specifications are approximate. Certain plans are reverse or mirror image. Balcony square footages are estimated and may vary from that stated. Please see Sales Representative for details. Furniture not included. Refer to key plan for unit location and orientation. E. & O.E.

KING

HOME 811 N



1BD.12A

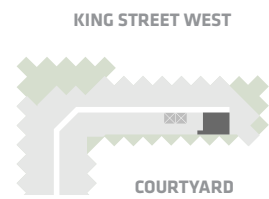
1 Bedroom
1 Bathroom

Total Living:
668 ft²

Interior Living:
492 ft²

Exterior Living:
177 ft²

LIVING	12' 6" X 8' 10"
DINING	9' 6" X 11' 10"
BEDROOM	9' 6" X 9' 11"
BALCONY	13' 0" X 7' 9"



NORTH MOUNTAIN KEYPLAN



All dimensions and specifications are approximate. Certain plans are reverse or mirror image. Balcony square footages are estimated and may vary from that stated. Please see Sales Representative for details. Furniture not included. Refer to key plan for unit location and orientation. E. & O.E.

KING

HOME 711 N



1BD.12A

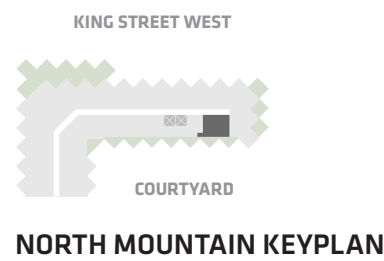
**1 Bedroom
1 Bathroom**

**Total Living:
624 ft²**

Interior Living:
491 ft²

Exterior Living:
133 ft²

LIVING	12' 7" X 6' 11"
DINING	9' 10" X 10' 11"
BEDROOM	9' 6" X 9' 11"
BALCONY	13' 0" X 7' 9"



All dimensions and specifications are approximate. Certain plans are reverse or mirror image. Balcony square footages are estimated and may vary from that stated. Please see Sales Representative for details. Furniture not included. Refer to key plan for unit location and orientation. E. & O.E.

KING

HOME 806 N



1BD.09A

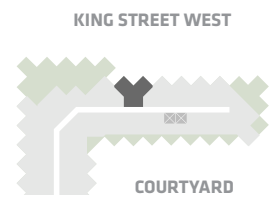
1 Bedroom
1 Bathroom

Total Living:
553 ft²

Interior Living:
553 ft²

Exterior Living:
N/A

LIVING 11' 8" X 9' 6"
DINING 8' 8" X 10' 5"
BEDROOM 9' 3" X 11' 2"



NORTH MOUNTAIN KEYPLAN



All dimensions and specifications are approximate. Certain plans are reverse or mirror image. Balcony square footages are estimated and may vary from that stated. Please see Sales Representative for details. Furniture not included. Refer to key plan for unit location and orientation. E. & O.E.

KING

HOME 807 N



1BD.10A

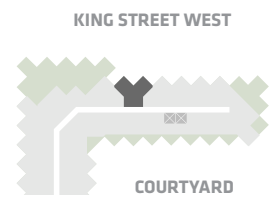
1 Bedroom
1 Bathroom

Total Living:
613 ft²

Interior Living:
541 ft²

Exterior Living:
72 ft²

LIVING	12' 0" X 7' 8"
DINING	7' 10" X 7' 9"
BEDROOM	8' 8" X 8' 8"
BALCONY	11' 0" X 4' 11"



NORTH MOUNTAIN KEYPLAN



All dimensions and specifications are approximate. Certain plans are reverse or mirror image. Balcony square footages are estimated and may vary from that stated. Please see Sales Representative for details. Furniture not included. Refer to key plan for unit location and orientation. E. & O.E.

KING

HOME 808 N



1BD.09B

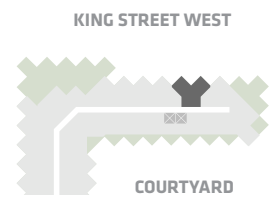
1 Bedroom
1 Bathroom

Total Living:
535 ft²

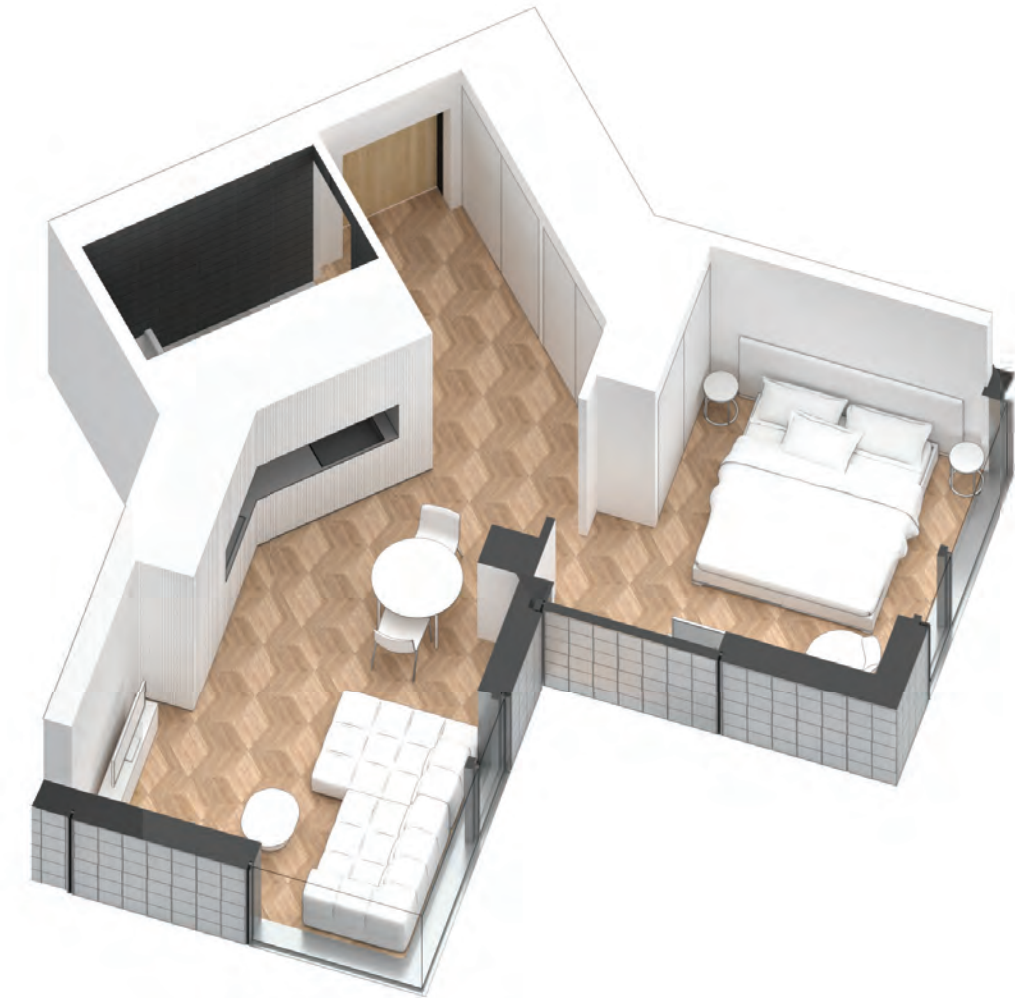
Interior Living:
535 ft²

Exterior Living:
N/A

**LIVING/
DINING** 17' 4" X 11' 2"
BEDROOM 11' 2" X 9' 3"



NORTH MOUNTAIN KEYPLAN



All dimensions and specifications are approximate. Certain plans are reverse or mirror image. Balcony square footages are estimated and may vary from that stated. Please see Sales Representative for details. Furniture not included. Refer to key plan for unit location and orientation. E. & O.E.

KING

HOME 707 N



1BD.10A

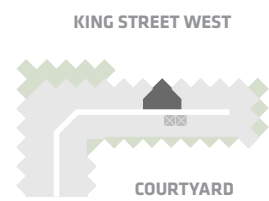
1 Bedroom
1 Bathroom

Total Living:
612 ft²

Interior Living:
541 ft²

Exterior Living:
72 ft²

LIVING	12' 0" X 7' 8"
DINING	7' 10" X 7' 9"
BEDROOM	8' 8" X 8' 8"
BALCONY	11' 0" X 4' 11"



NORTH MOUNTAIN KEYPLAN



All dimensions and specifications are approximate. Certain plans are reverse or mirror image. Balcony square footages are estimated and may vary from that stated. Please see Sales Representative for details. Furniture not included. Refer to key plan for unit location and orientation. E. & O.E.

KING

HOME 708 N



1BD.09B

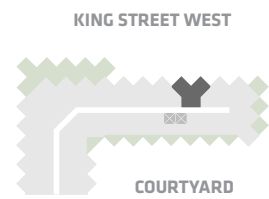
1 Bedroom
1 Bathroom

Total Living:
536 ft²

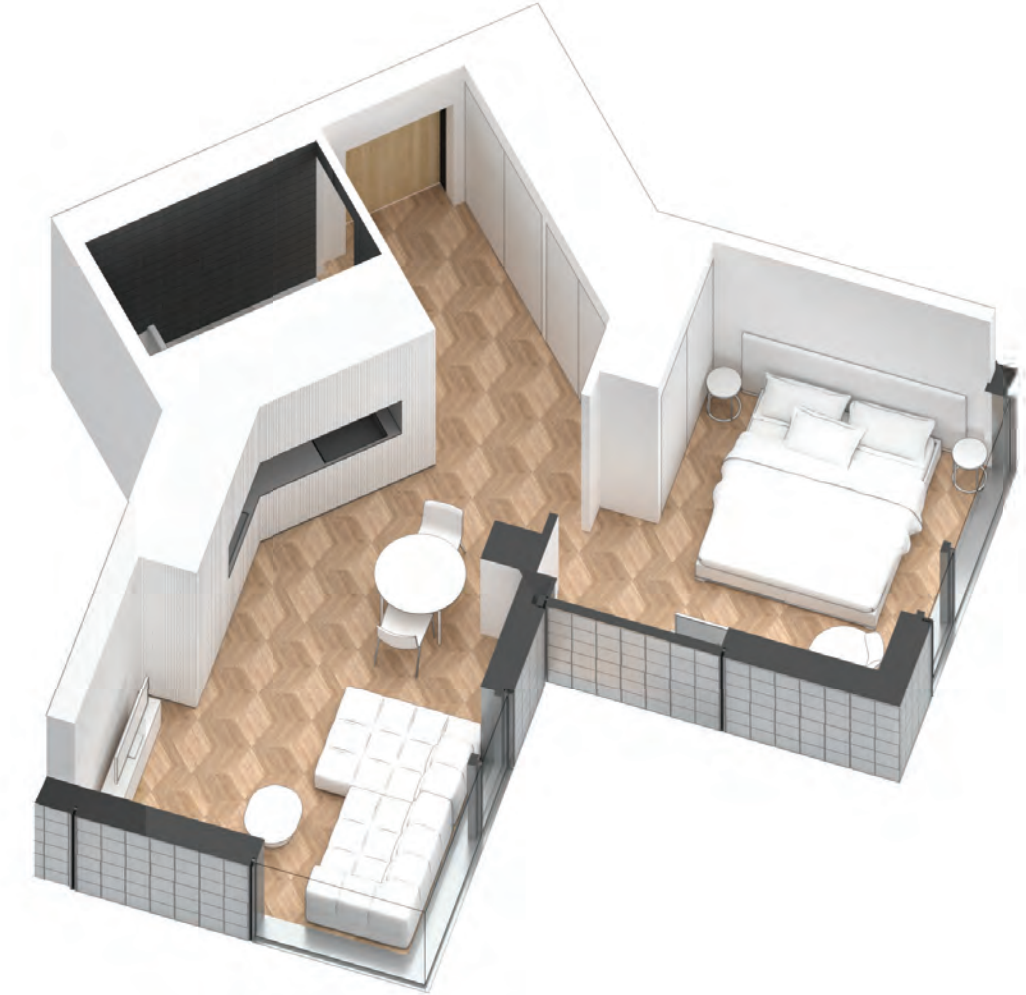
Interior Living:
536 ft²

Exterior Living:
N/A

**LIVING/
DINING** 17' 4" X 11' 2"
BEDROOM 11' 2" X 9' 3"



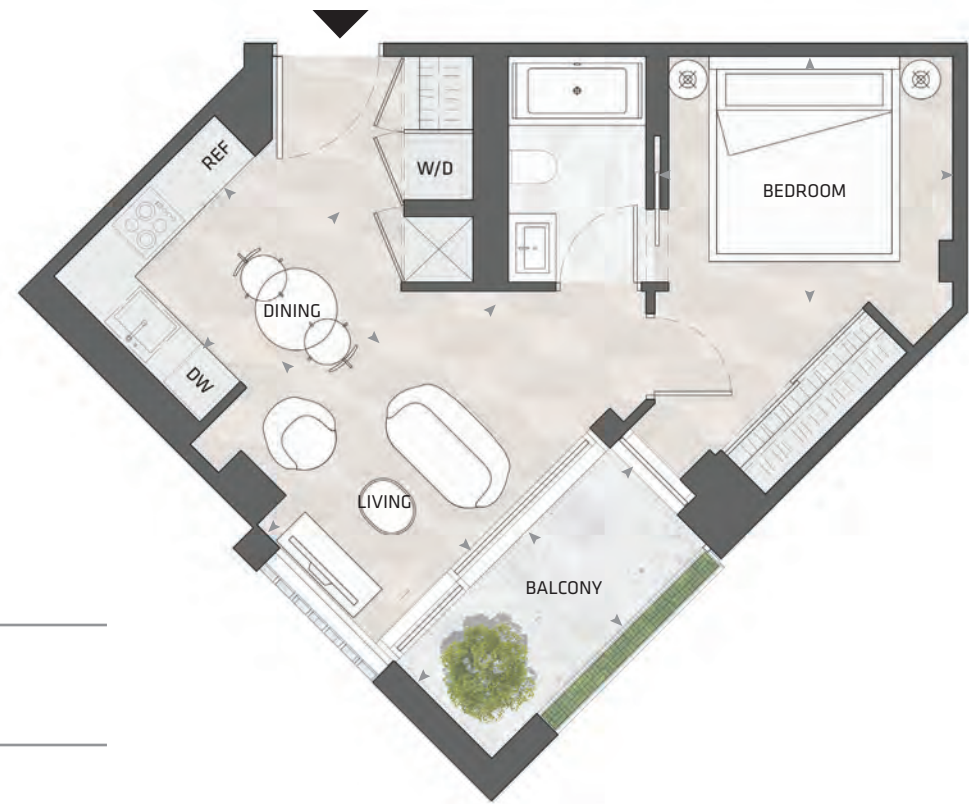
NORTH MOUNTAIN KEYPLAN



All dimensions and specifications are approximate. Certain plans are reverse or mirror image. Balcony square footages are estimated and may vary from that stated. Please see Sales Representative for details. Furniture not included. Refer to key plan for unit location and orientation. E. 6 O.E.

KING

HOME 709 N



1BD.10B

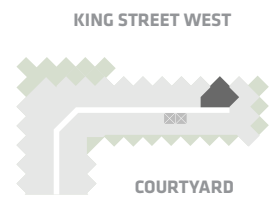
**1 Bedroom
1 Bathroom**

**Total Living:
579 ft²**

Interior Living:
507 ft²

Exterior Living:
72 ft²

LIVING	12' 0" X 9' 10"
DINING	6' 7" X 7' 2"
BEDROOM	10' 3" X 8' 11"
BALCONY	11' 0" X 4' 11"



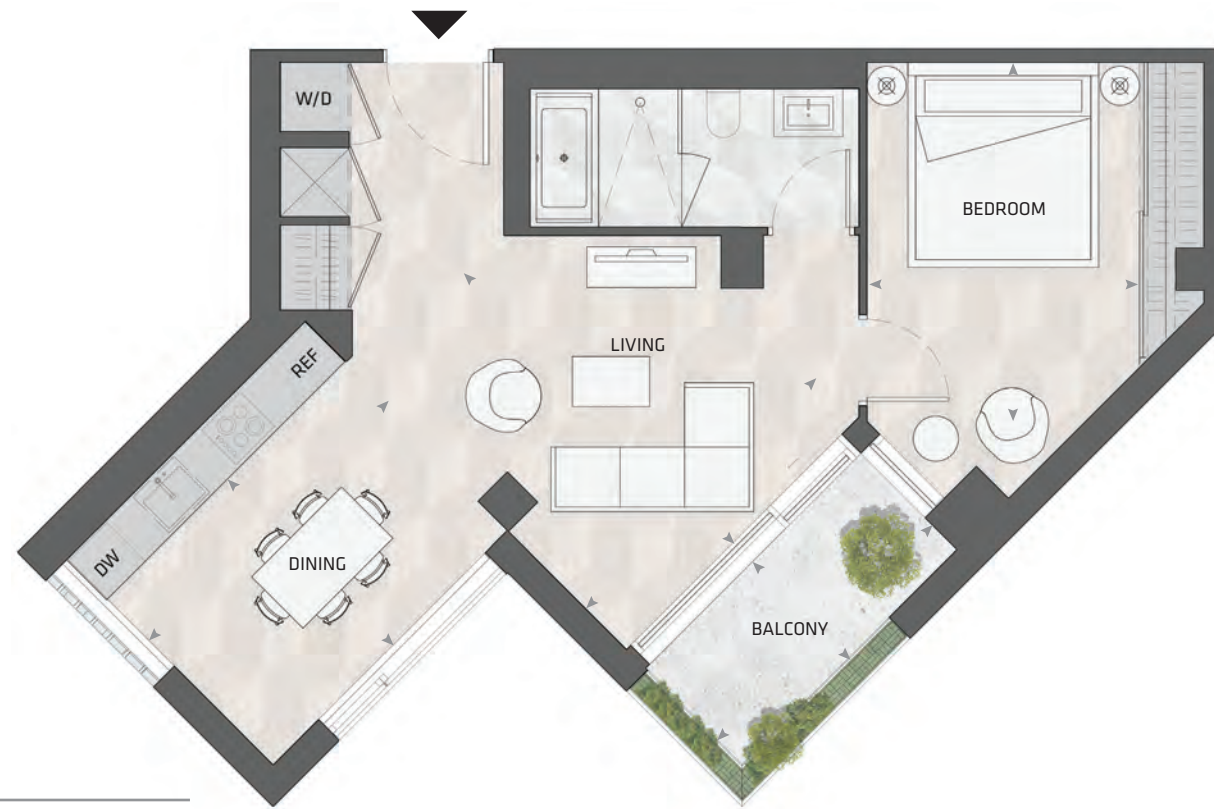
NORTH MOUNTAIN KEYPLAN



All dimensions and specifications are approximate. Certain plans are reverse or mirror image. Balcony square footages are estimated and may vary from that stated. Please see Sales Representative for details. Furniture not included. Refer to key plan for unit location and orientation. E. & O.E.

KING

HOME 706 N



1BD.23

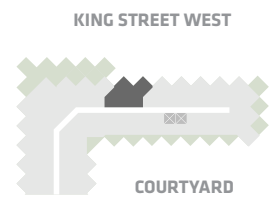
1 Bedroom
1 Bathroom

Total Living:
779 ft²

Interior Living:
708 ft²

Exterior Living:
72 ft²

LIVING	12' 0" X 13' 3"
DINING	13' 6" X 8' 5"
BEDROOM	9' 10" X 13' 0"
BALCONY	11' 0" X 4' 11"



NORTH MOUNTAIN KEYPLAN



All dimensions and specifications are approximate. Certain plans are reverse or mirror image. Balcony square footages are estimated and may vary from that stated. Please see Sales Representative for details. Furniture not included. Refer to key plan for unit location and orientation. E. & O.E.

KING

HOME 603 N



1BD.79B

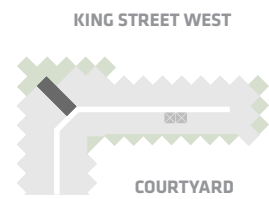
1 Bedroom
1 Bathroom

Total Living:
472 ft²

Interior Living:
472 ft²

Exterior Living:
N/A

**LIVING/
DINING** 11' 0" X 14' 0"
BEDROOM 8' 4" X 8' 6"



NORTH MOUNTAIN KEYPLAN



All dimensions and specifications are approximate. Certain plans are reverse or mirror image. Balcony square footages are estimated and may vary from that stated. Please see Sales Representative for details. Furniture not included. Refer to key plan for unit location and orientation. E. & O.E.

KING

HOME 605 N



1BD.36

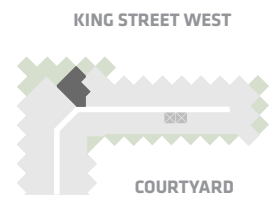
1 Bedroom
1 Bathroom

Total Living:
845 ft²

Interior Living:
558 ft²

Exterior Living:
287 ft²

LIVING	13' 2" X 10' 2"
DINING	8' 8" X 8' 0"
BEDROOM	8' 11" X 9' 10"
TERRACE A	6' 8" X 9' 1"
TERRACE B	9' 1" X 6' 8"



NORTH MOUNTAIN KEYPLAN



All dimensions and specifications are approximate. Certain plans are reverse or mirror image. Balcony square footages are estimated and may vary from that stated. Please see Sales Representative for details. Furniture not included. Refer to key plan for unit location and orientation. E. & O.E.

KING

HOME 612 N



1BD.12A

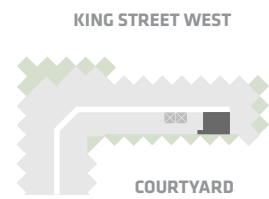
1 Bedroom
1 Bathroom

Total Living:
624 ft²

Interior Living:
492 ft²

Exterior Living:
133 ft²

LIVING	12' 7" X 6' 11"
DINING	9' 10" X 10' 11"
BEDROOM	9' 6" X 9' 11"
BALCONY	13' 0" X 7' 9"



NORTH MOUNTAIN KEYPLAN



All dimensions and specifications are approximate. Certain plans are reverse or mirror image. Balcony square footages are estimated and may vary from that stated. Please see Sales Representative for details. Furniture not included. Refer to key plan for unit location and orientation. E. & O.E.

KING

HOME 609 N



1BD.09B

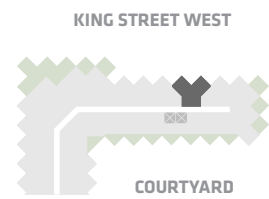
1 Bedroom
1 Bathroom

Total Living:
536 ft²

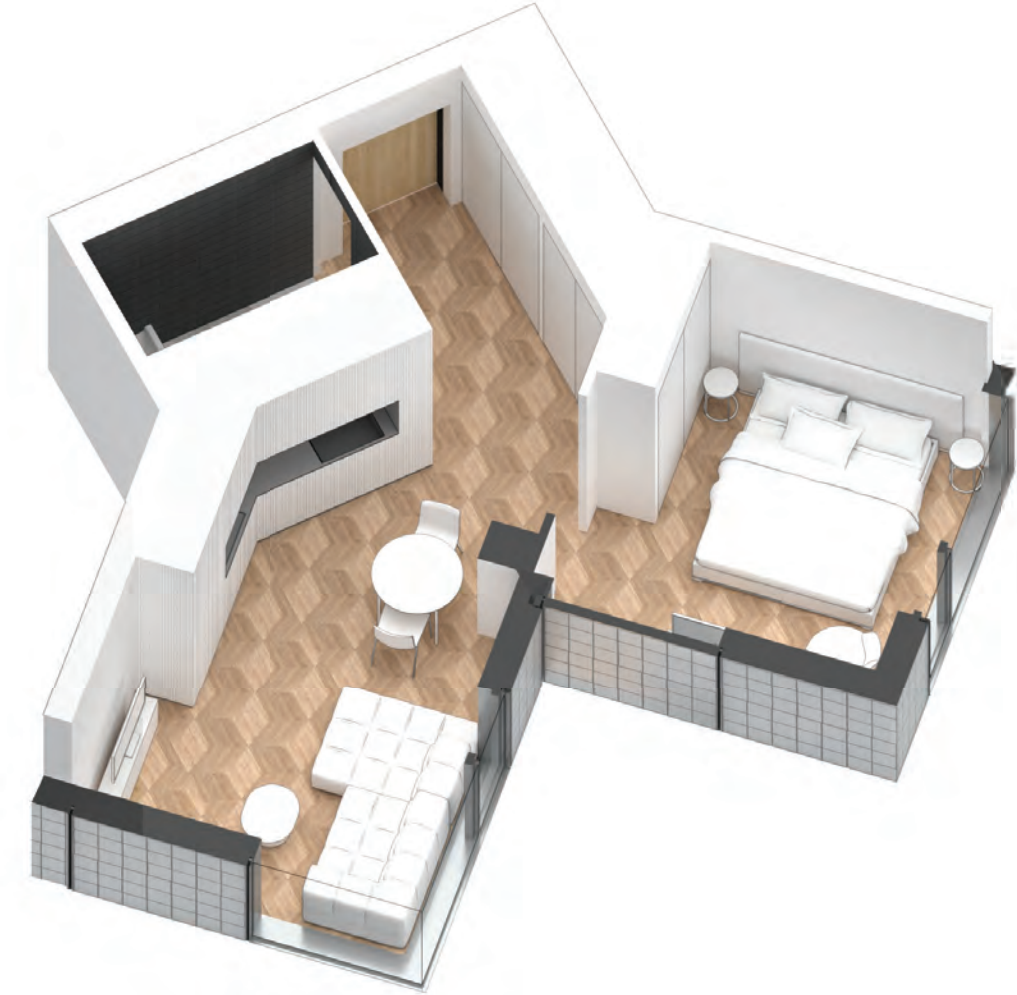
Interior Living:
536 ft²

Exterior Living:
N/A

**LIVING/
DINING** 17' 4" X 11' 2"
BEDROOM 11' 2" X 9' 3"



NORTH MOUNTAIN KEYPLAN



All dimensions and specifications are approximate. Certain plans are reverse or mirror image. Balcony square footages are estimated and may vary from that stated. Please see Sales Representative for details. Furniture not included. Refer to key plan for unit location and orientation. E. 6 O.E.

KING

HOME 610 N



1BD.10B

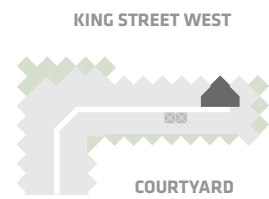
**1 Bedroom
1 Bathroom**

**Total Living:
579 ft²**

Interior Living:
507 ft²

Exterior Living:
72 ft²

LIVING	12' 0" X 9' 10"
DINING	6' 7" X 7' 2"
BEDROOM	10' 3" X 8' 11"
BALCONY	11' 0" X 4' 11"



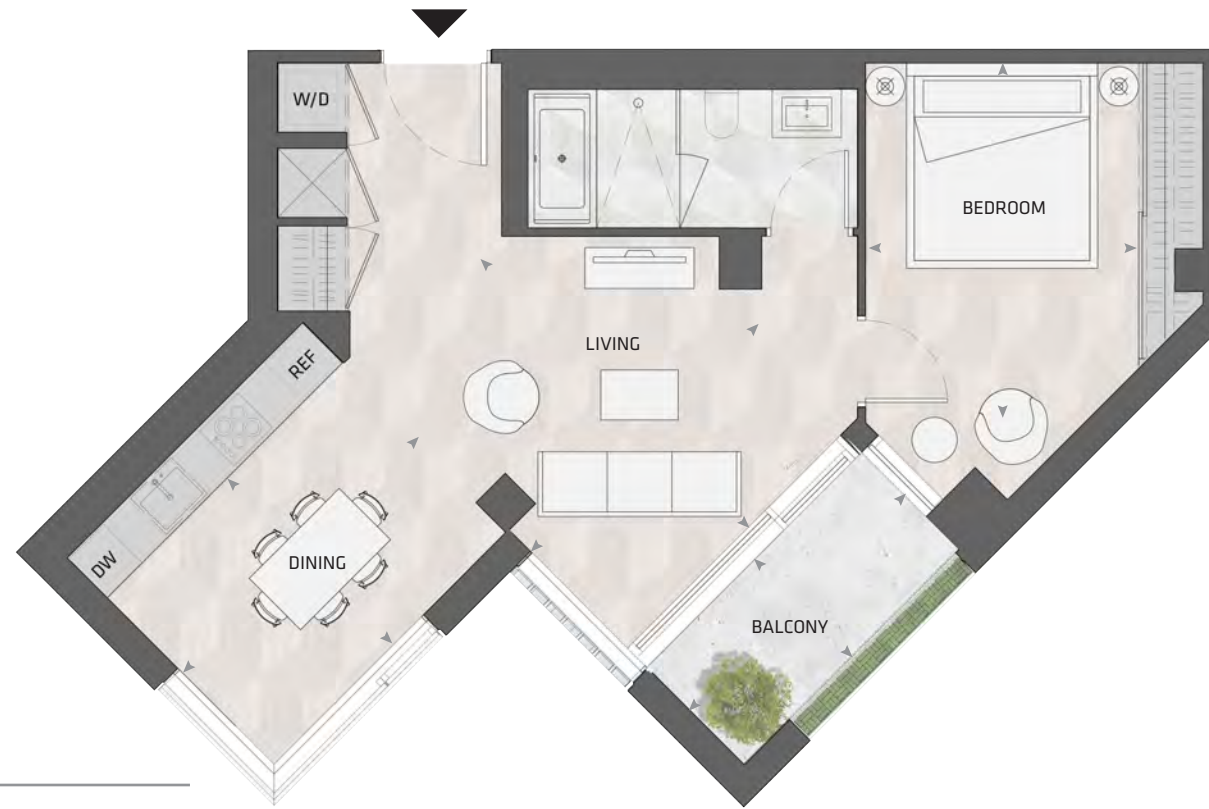
NORTH MOUNTAIN KEYPLAN



All dimensions and specifications are approximate. Certain plans are reverse or mirror image. Balcony square footages are estimated and may vary from that stated. Please see Sales Representative for details. Furniture not included. Refer to key plan for unit location and orientation. E. 6 O.E.

KING

HOME 607 N



1BD.23

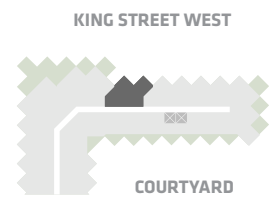
1 Bedroom
1 Bathroom

Total Living:
779 ft²

Interior Living:
708 ft²

Exterior Living:
72 ft²

LIVING	12' 0" X 13' 3"
DINING	13' 6" X 8' 5"
BEDROOM	9' 10" X 13' 0"
BALCONY	11' 0" X 4' 11"



NORTH MOUNTAIN KEYPLAN



All dimensions and specifications are approximate. Certain plans are reverse or mirror image. Balcony square footages are estimated and may vary from that stated. Please see Sales Representative for details. Furniture not included. Refer to key plan for unit location and orientation. E. & O.E.

KING

HOME 608 N



1BD.10A

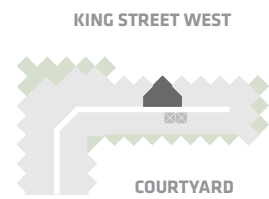
1 Bedroom
1 Bathroom

Total Living:
612 ft²

Interior Living:
541 ft²

Exterior Living:
72 ft²

LIVING	12' 0" X 7' 8"
DINING	7' 10" X 7' 9"
BEDROOM	8' 8" X 8' 8"
BALCONY	11' 0" X 4' 11"



NORTH MOUNTAIN KEYPLAN



All dimensions and specifications are approximate. Certain plans are reverse or mirror image. Balcony square footages are estimated and may vary from that stated. Please see Sales Representative for details. Furniture not included. Refer to key plan for unit location and orientation. E. & O.E.

KING

HOME 805 N



1BD.20A

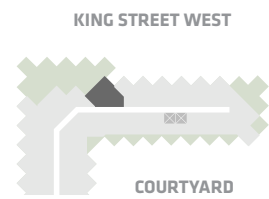
**1 Bedroom + Study
1 Bathroom**

**Total Living:
730 ft²**

Interior Living:
587 ft²

Exterior Living:
143 ft²

LIVING	12' 0" X 10' 4"
DINING	11' 4" X 8' 2"
BEDROOM	9' 10" X 10' 2"
TERRACE	9' 1" X 6' 8"



NORTH MOUNTAIN KEYPLAN



All dimensions and specifications are approximate. Certain plans are reverse or mirror image. Balcony square footages are estimated and may vary from that stated. Please see Sales Representative for details. Furniture not included. Refer to key plan for unit location and orientation. E. & O.E.

KING

HOME 809 N



1BD.20B

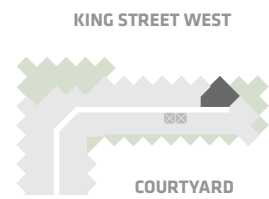
**1 Bedroom + Study
1 Bathroom**

**Total Living:
736 ft²**

Interior Living:
593 ft²

Exterior Living:
143 ft²

LIVING	11' 1" X 10' 4"
DINING	11' 4" X 8' 2"
BEDROOM	9' 10" X 10' 3"
TERRACE	6' 8" X 9' 1"



NORTH MOUNTAIN KEYPLAN



All dimensions and specifications are approximate. Certain plans are reverse or mirror image. Balcony square footages are estimated and may vary from that stated. Please see Sales Representative for details. Furniture not included. Refer to key plan for unit location and orientation. E. & O.E.

KING

HOME 1006 N



1BD.72

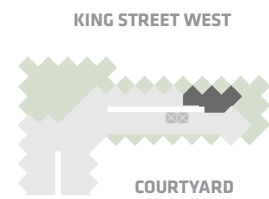
1 Bedroom + Study
1 Bathroom

Total Living:
1280 ft²

Interior Living:
850 ft²

Exterior Living:
430 ft²

LIVING	12' 0" x 12' 0"
DINING	11' 7" x 12' 5"
BEDROOM	10' 10" x 11' 10"
TERRACE A	9' 1" x 6' 8"
TERRACE B	6' 8" x 9' 1"



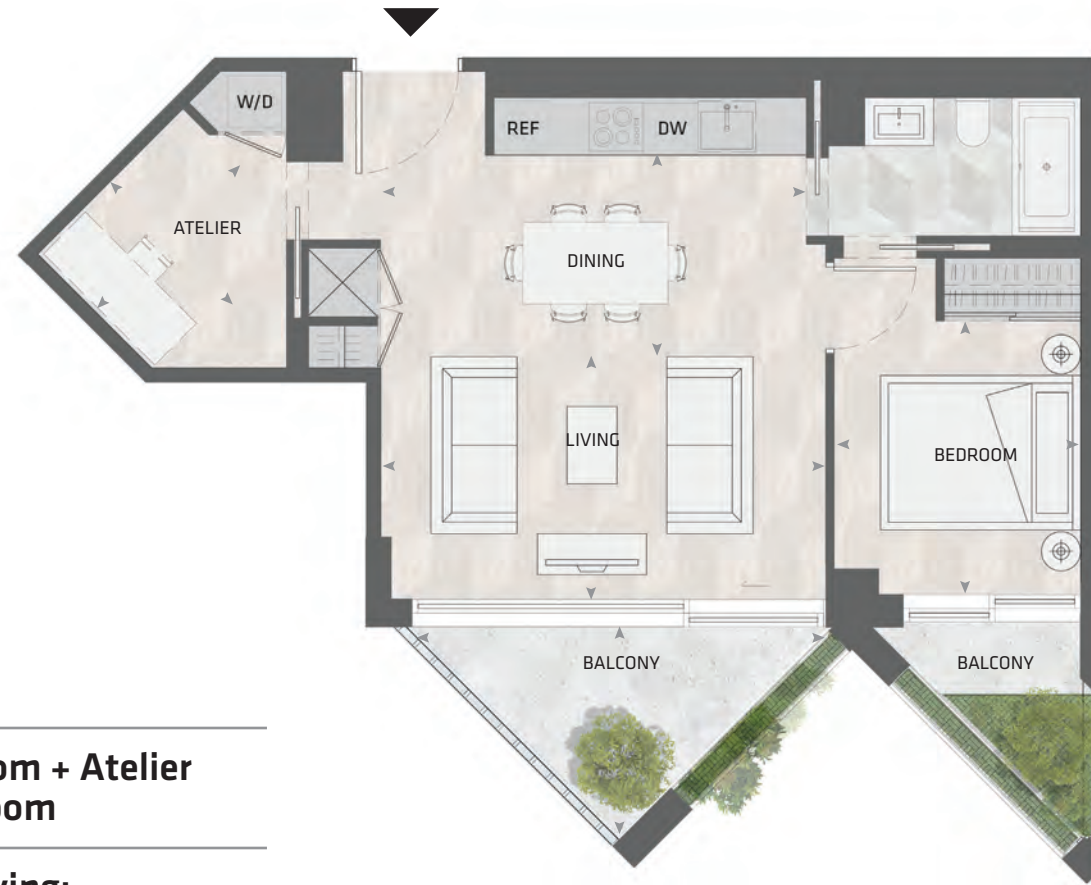
NORTH MOUNTAIN KEYPLAN



All dimensions and specifications are approximate. Certain plans are reverse or mirror image. Balcony square footages are estimated and may vary from that stated. Please see Sales Representative for details. Furniture not included. Refer to key plan for unit location and orientation. E. & O.E.

KING

HOME 502 N



1BD.17

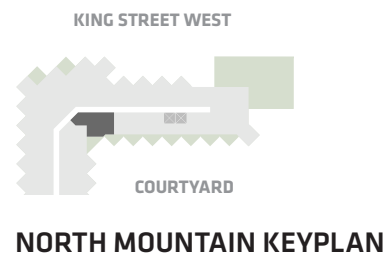
**1 Bedroom + Atelier
1 Bathroom**

**Total Living:
754 ft²**

Interior Living:
627 ft²

Exterior Living:
127 ft²

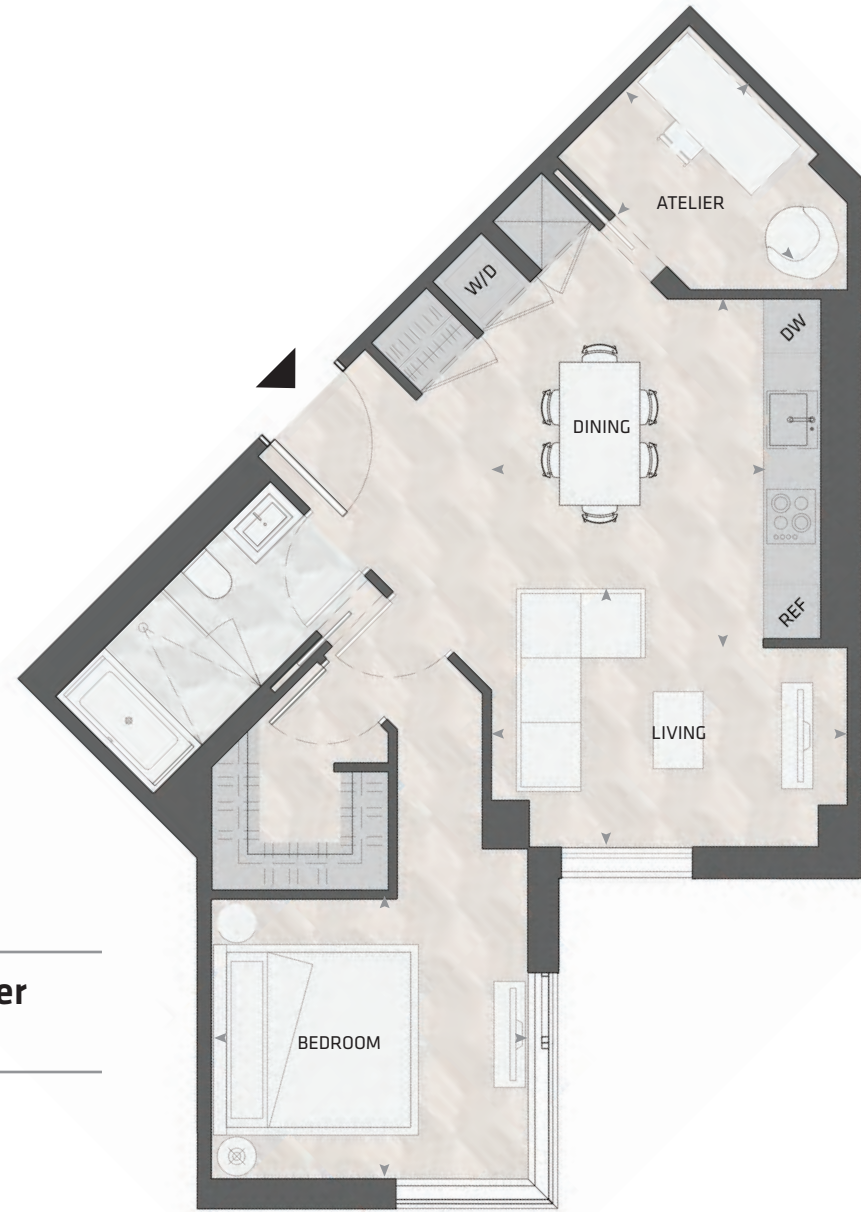
LIVING	16' 1" X 8' 9"
DINING	16' 1" X 7' 3"
BEDROOM	8' 11" X 9' 10"
ATELIER	7' 3" X 5' 10"
BALCONY	13' 0" X 7' 9"



All dimensions and specifications are approximate. Certain plans are reverse or mirror image. Balcony square footages are estimated and may vary from that stated. Please see Sales Representative for details. Furniture not included. Refer to key plan for unit location and orientation. E. & O.E.

KING

HOME 506 N



1BD.74

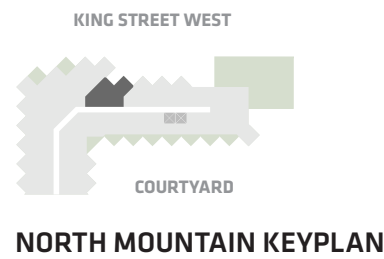
1 Bedroom + Atelier
1 Bathroom

Total Living:
762 ft²

Interior Living:
762 ft²

Exterior Living:
N/A

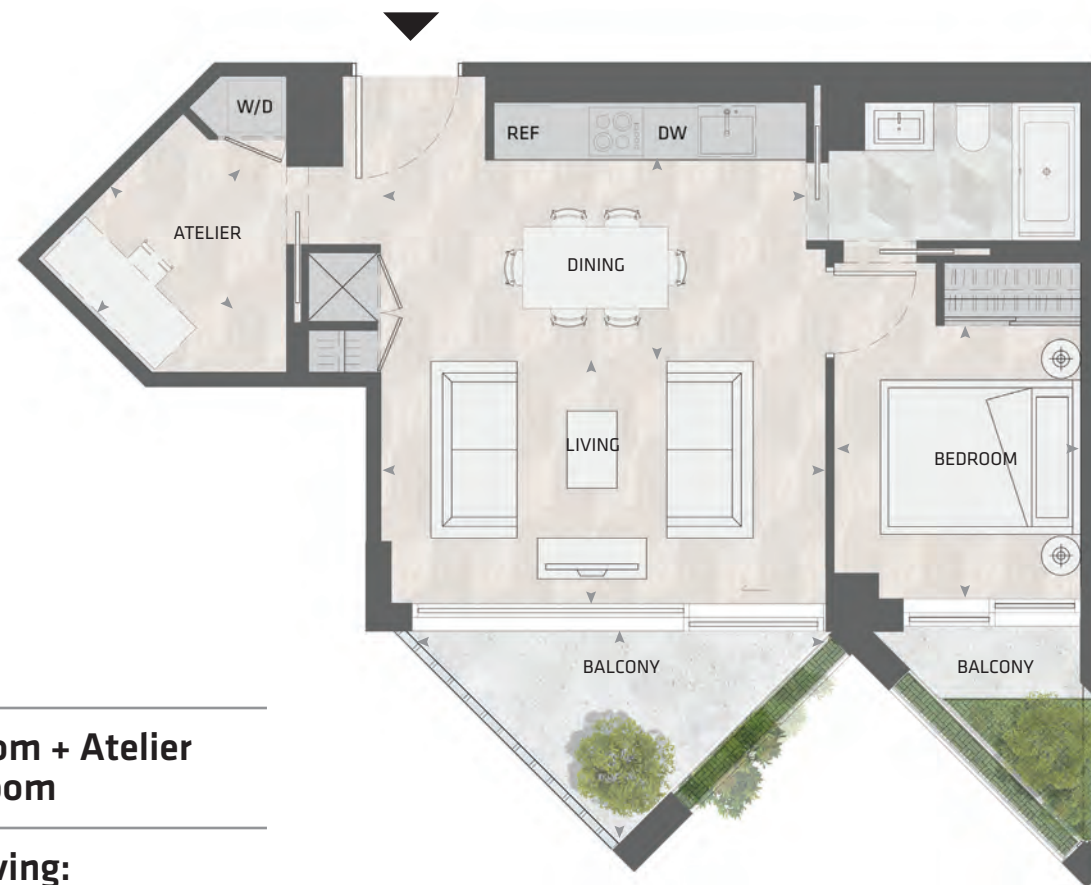
LIVING	12' X 11" x 9' 4"
DINING	9' 10" x 12' 7"
BEDROOM	11' 5" x 10' 2"
ATELIER	6' 9" X 8' 2"



All dimensions and specifications are approximate. Certain plans are reverse or mirror image. Balcony square footages are estimated and may vary from that stated. Please see Sales Representative for details. Furniture not included. Refer to key plan for unit location and orientation. E. & O.E.

KING

HOME 602 N



1BD.17

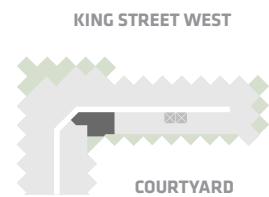
**1 Bedroom + Atelier
1 Bathroom**

**Total Living:
755 ft²**

Interior Living:
635 ft²

Exterior Living:
120 ft²

LIVING	16' 1" X 8' 9"
DINING	16' 1" X 7' 3"
BEDROOM	8' 11" X 9' 10"
ATELIER	7' 3" X 5' 10"
BALCONY	13' 0" X 7' 9"



NORTH MOUNTAIN KEYPLAN



All dimensions and specifications are approximate. Certain plans are reverse or mirror image. Balcony square footages are estimated and may vary from that stated. Please see Sales Representative for details. Furniture not included. Refer to key plan for unit location and orientation. E. & O.E.

KING

HOME 606 N



1BD.22A

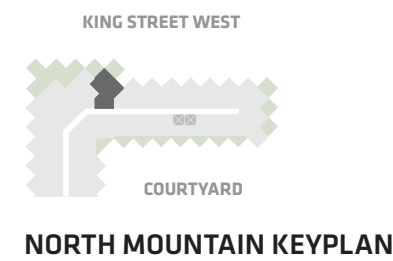
1 Bedroom + Atelier
1 Bathroom

Total Living:
793 ft²

Interior Living:
626 ft²

Exterior Living:
167 ft²

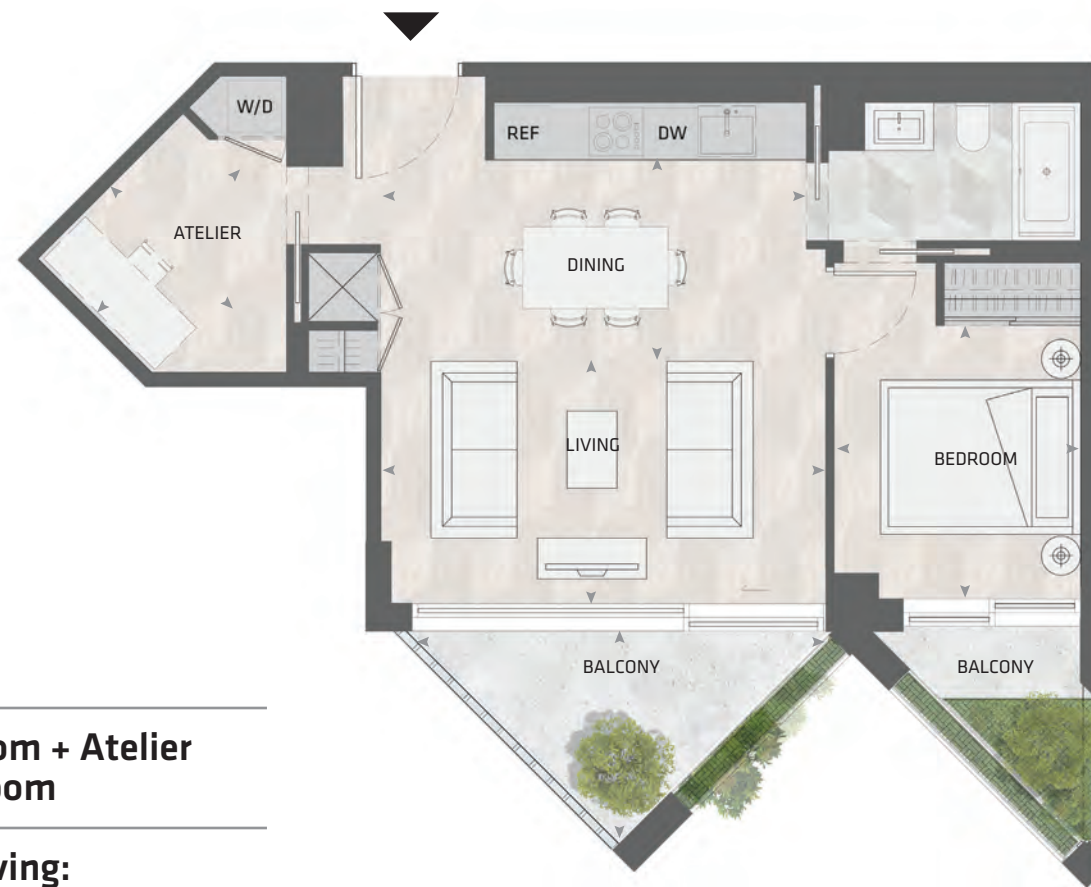
LIVING/ DINING	11' 4" X 10' 10"
BEDROOM	10' 0" X 10' 0"
ATELIER	5' 8" X 5' 1"
TERRACE	6' 8" X 8' 3"



All dimensions and specifications are approximate. Certain plans are reverse or mirror image. Balcony square footages are estimated and may vary from that stated. Please see Sales Representative for details. Furniture not included. Refer to key plan for unit location and orientation. E. & O.E.

KING

HOME 902 N



1BD.17

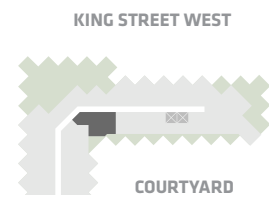
1 Bedroom + Atelier
1 Bathroom

Total Living:
758 ft²

Interior Living:
639 ft²

Exterior Living:
119 ft²

LIVING	16' 1" X 8' 9"
DINING	16' 1" X 7' 3"
BEDROOM	8' 11" X 9' 10"
ATELIER	7' 3" X 5' 10"
BALCONY	13' 0" X 7' 9"



NORTH MOUNTAIN KEYPLAN



All dimensions and specifications are approximate. Certain plans are reverse or mirror image. Balcony square footages are estimated and may vary from that stated. Please see Sales Representative for details. Furniture not included. Refer to key plan for unit location and orientation. E. & O.E.

KING

HOME 903 N



1BD.40

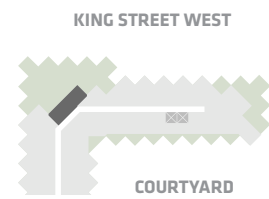
1 Bedroom + Atelier
1 Bathroom

Total Living:
769 ft²

Interior Living:
482 ft²

Exterior Living:
287 ft²

LIVING/ DINING	16' 0" X 8' 5"
BEDROOM	10' 8" X 9' 0"
ATELIER	5' 4" X 4' 0"
TERRACE	21' 2" X 6' 8"



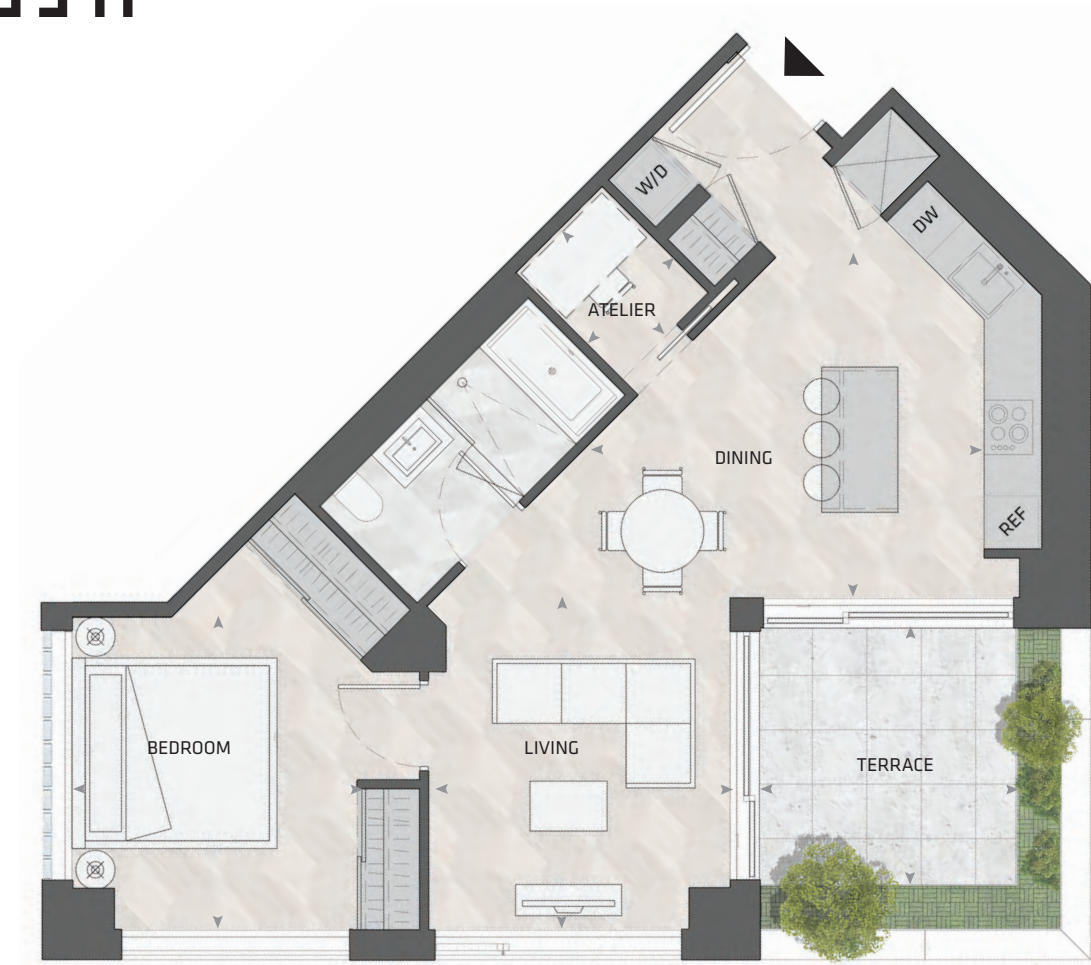
NORTH MOUNTAIN KEYPLAN



All dimensions and specifications are approximate. Certain plans are reverse or mirror image. Balcony square footages are estimated and may vary from that stated. Please see Sales Representative for details. Furniture not included. Refer to key plan for unit location and orientation. E. & O.E.

KING

HOME 909 N



1BD.38

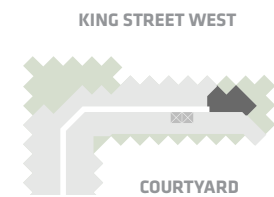
**1 Bedroom + Atelier
1 Bathroom**

**Total Living:
894 ft²**

Interior Living:
751 ft²

Exterior Living:
143 ft²

LIVING	10' 8" X 11' 0"
DINING	16' 8" X 16' 2"
BEDROOM	11' 4" X 10' 6"
ATELIER	4' 5" X 5' 5"
TERRACE	9' 1" X 9' 1"



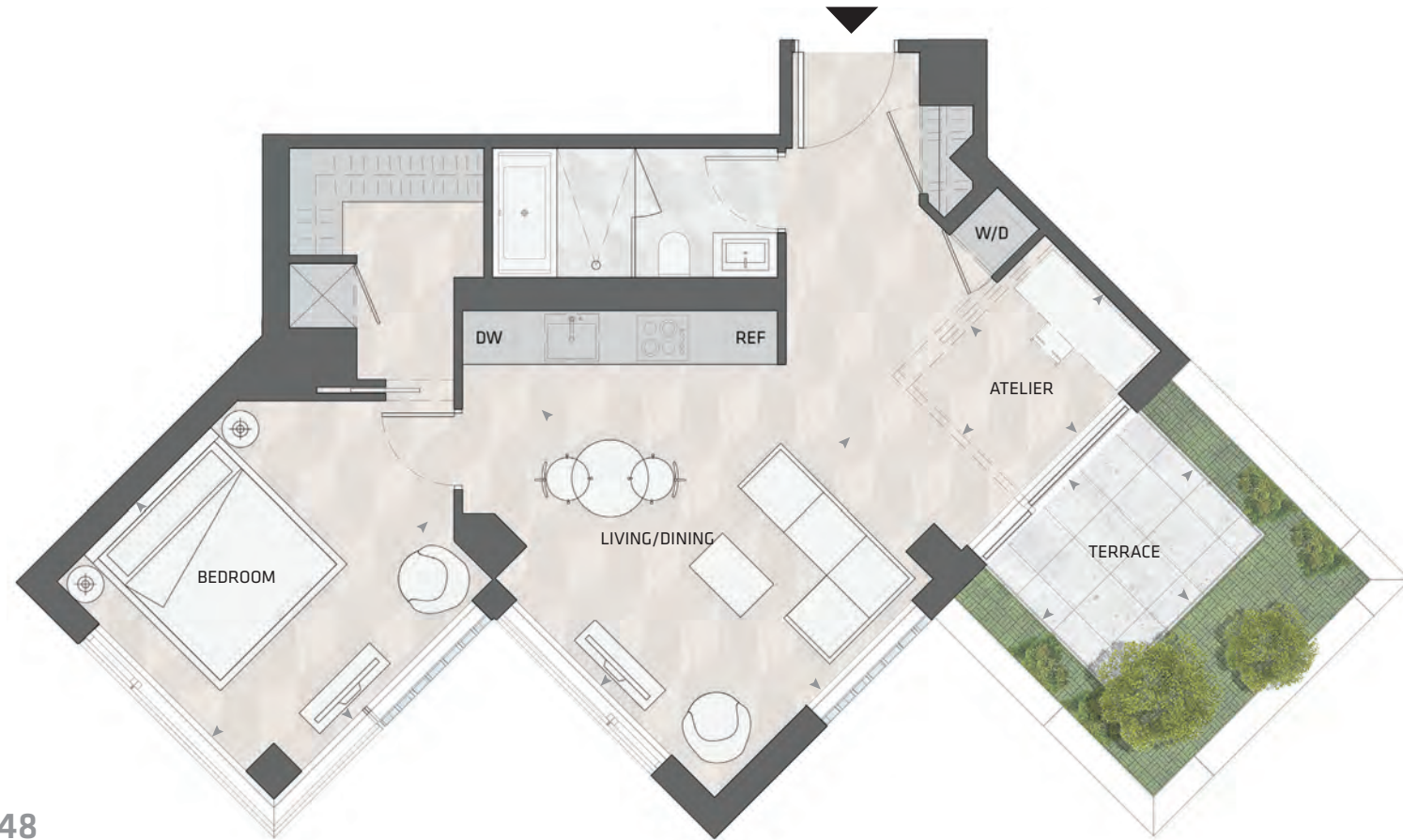
NORTH MOUNTAIN KEYPLAN



All dimensions and specifications are approximate. Certain plans are reverse or mirror image. Balcony square footages are estimated and may vary from that stated. Please see Sales Representative for details. Furniture not included. Refer to key plan for unit location and orientation. E. & O.E.

KING

HOME 810 N



1BD.48

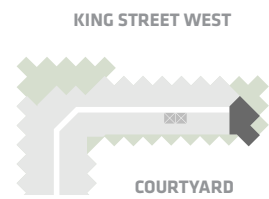
**1 Bedroom + Atelier
1 Bathroom**

**Total Living:
957 ft²**

Interior Living:
790 ft²

Exterior Living:
167 ft²

LIVING/ DINING	13' 5" X 13' 9"
BEDROOM	11' 11" X 11' 10"
ATELIER	7' 0" X 5' 10"
TERRACE	8' 3" X 6' 8"



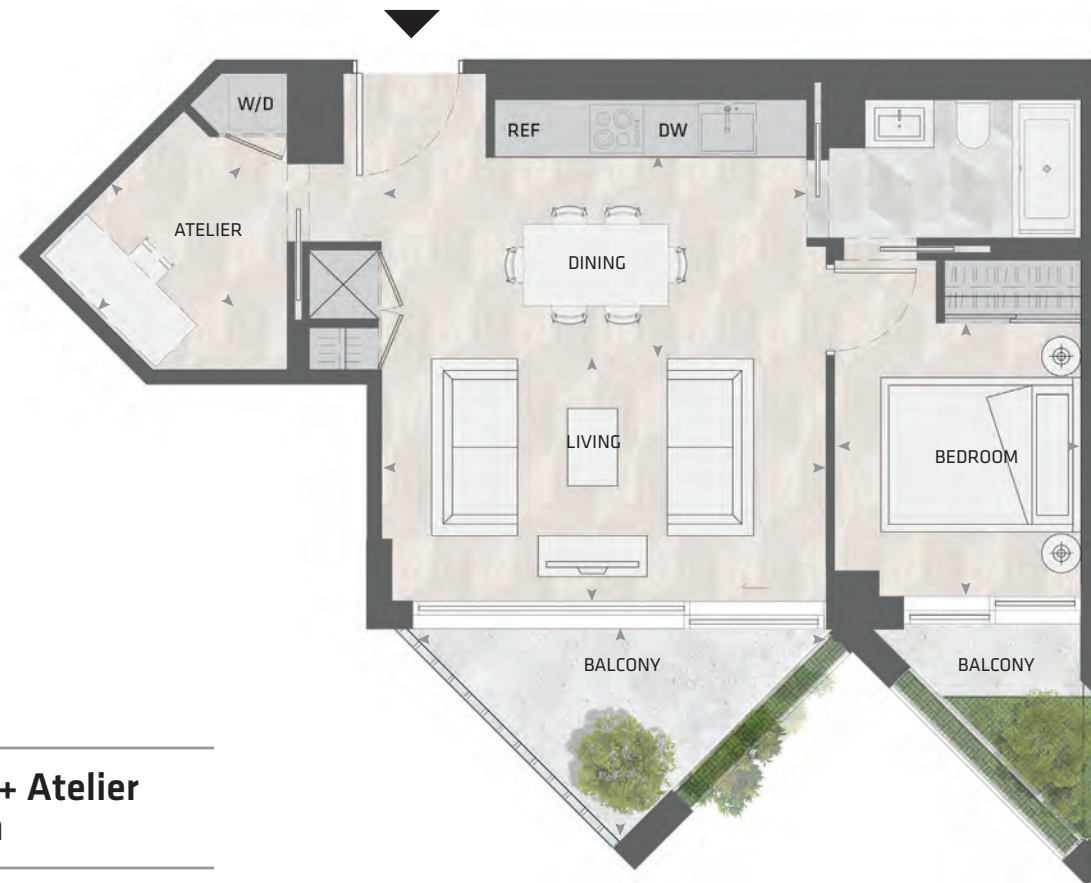
NORTH MOUNTAIN KEYPLAN



All dimensions and specifications are approximate. Certain plans are reverse or mirror image. Balcony square footages are estimated and may vary from that stated. Please see Sales Representative for details. Furniture not included. Refer to key plan for unit location and orientation. E. & O.E.

KING

HOME 702 N



1BD.17

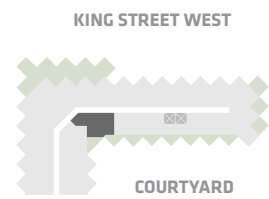
1 Bedroom + Atelier
1 Bathroom

Total Living:
758 ft²

Interior Living:
639 ft²

Exterior Living:
119 ft²

LIVING	16' 1" X 8' 9"
DINING	16' 1" X 7' 3"
BEDROOM	8' 11" X 9' 10"
ATELIER	7' 3" X 5' 10"
BALCONY	13' 0" X 7' 9"



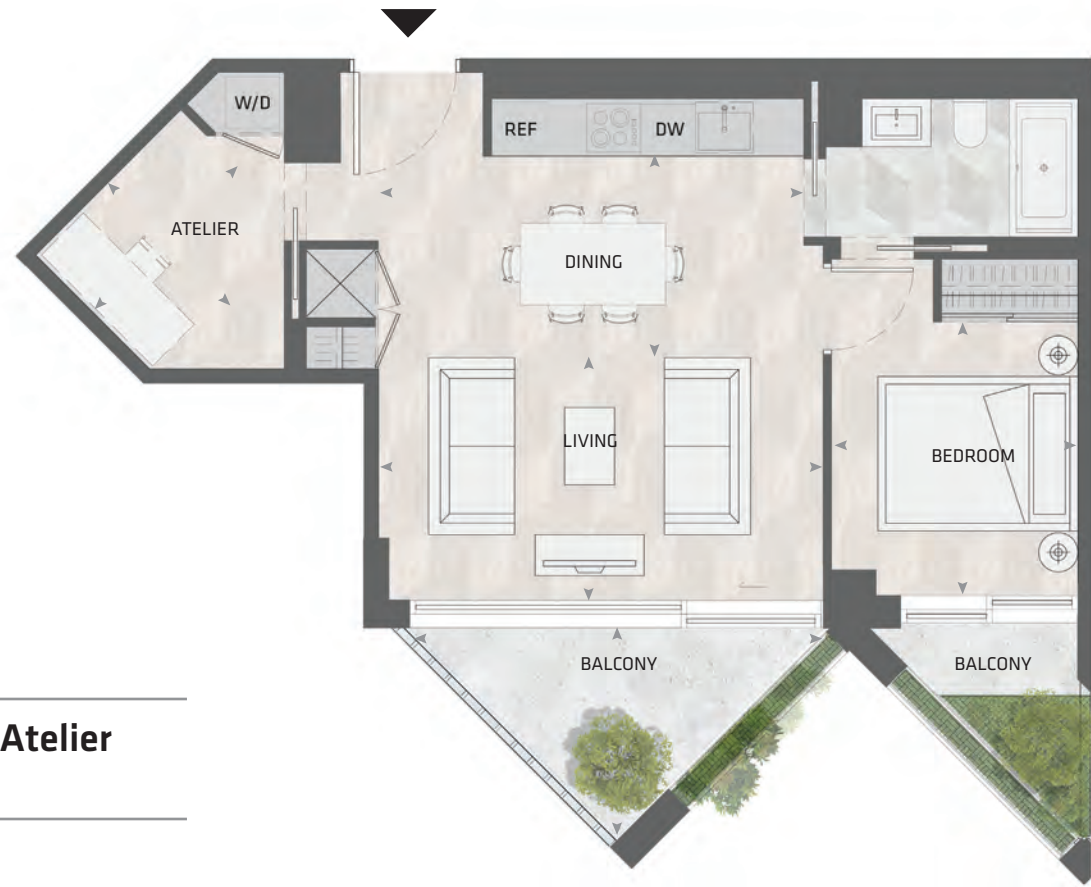
NORTH MOUNTAIN KEYPLAN



All dimensions and specifications are approximate. Certain plans are reverse or mirror image. Balcony square footages are estimated and may vary from that stated. Please see Sales Representative for details. Furniture not included. Refer to key plan for unit location and orientation. E. & O.E.

KING

HOME 802 N



1BD.17

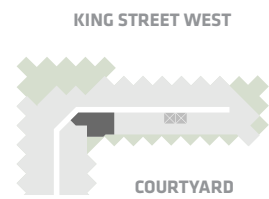
**1 Bedroom + Atelier
1 Bathroom**

**Total Living:
754 ft²**

Interior Living:
636 ft²

Exterior Living:
119 ft²

LIVING	16' 1" X 8' 9"
DINING	16' 1" X 7' 3"
BEDROOM	8' 11" X 9' 10"
ATELIER	7' 3" X 5' 10"
BALCONY	13' 0" X 7' 9"



NORTH MOUNTAIN KEYPLAN



All dimensions and specifications are approximate. Certain plans are reverse or mirror image. Balcony square footages are estimated and may vary from that stated. Please see Sales Representative for details. Furniture not included. Refer to key plan for unit location and orientation. E. & O.E.

KING

HOME 703 N



1BD.39

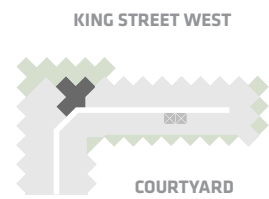
1 Bedroom + Atelier
1 Bathroom

Total Living:
812 ft²

Interior Living:
668 ft²

Exterior Living:
143 ft²

LIVING	11' 8" X 10' 11"
DINING	11' 0" X 6' 3"
BEDROOM	10' 0" X 11' 7"
TERRACE	9' 1" X 9' 1"



NORTH MOUNTAIN KEYPLAN



All dimensions and specifications are approximate. Certain plans are reverse or mirror image. Balcony square footages are estimated and may vary from that stated. Please see Sales Representative for details. Furniture not included. Refer to key plan for unit location and orientation. E. 6 O.E.

KING

HOME 601 N



2BD.06

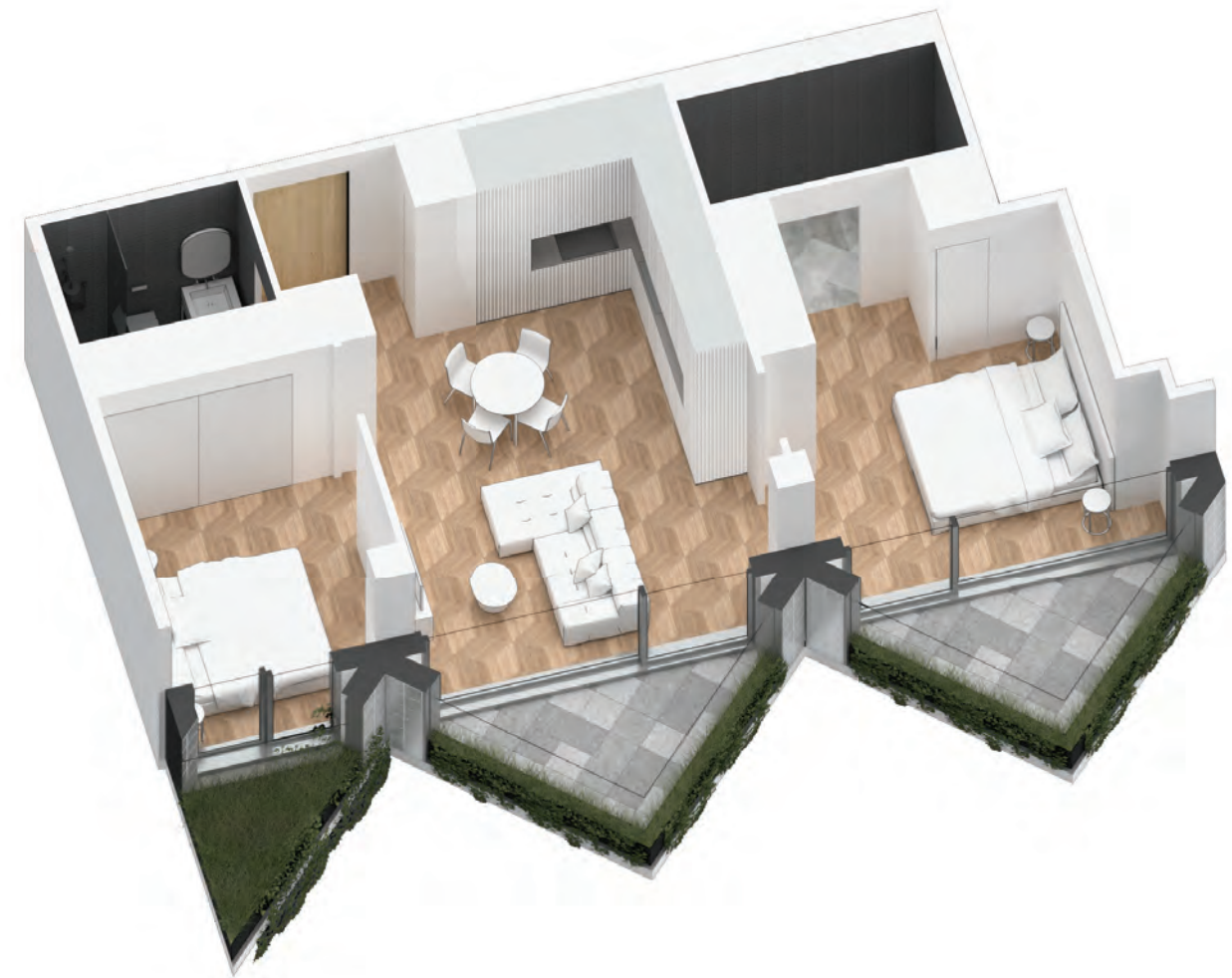
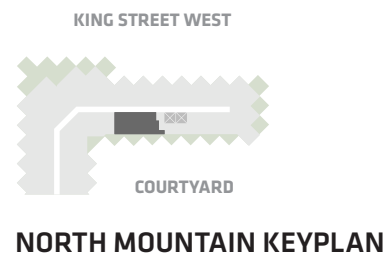
**2 Bedroom
2 Bathroom**

**Total Living:
1053 ft²**

Interior Living:
833 ft²

Exterior Living:
220 ft²

LIVING	14' 6" X 8' 0"
DINING	10' 10" X 9' 1"
MASTER BD	11' 5" X 9' 6"
BEDROOM 2	9' 6" X 10' 1"
BALCONY	13' 0" X 7' 9"



All dimensions and specifications are approximate. Certain plans are reverse or mirror image. Balcony square footages are estimated and may vary from that stated. Please see Sales Representative for details. Furniture not included. Refer to key plan for unit location and orientation. E. & O.E.

KING

HOME 501 N



2BD.06

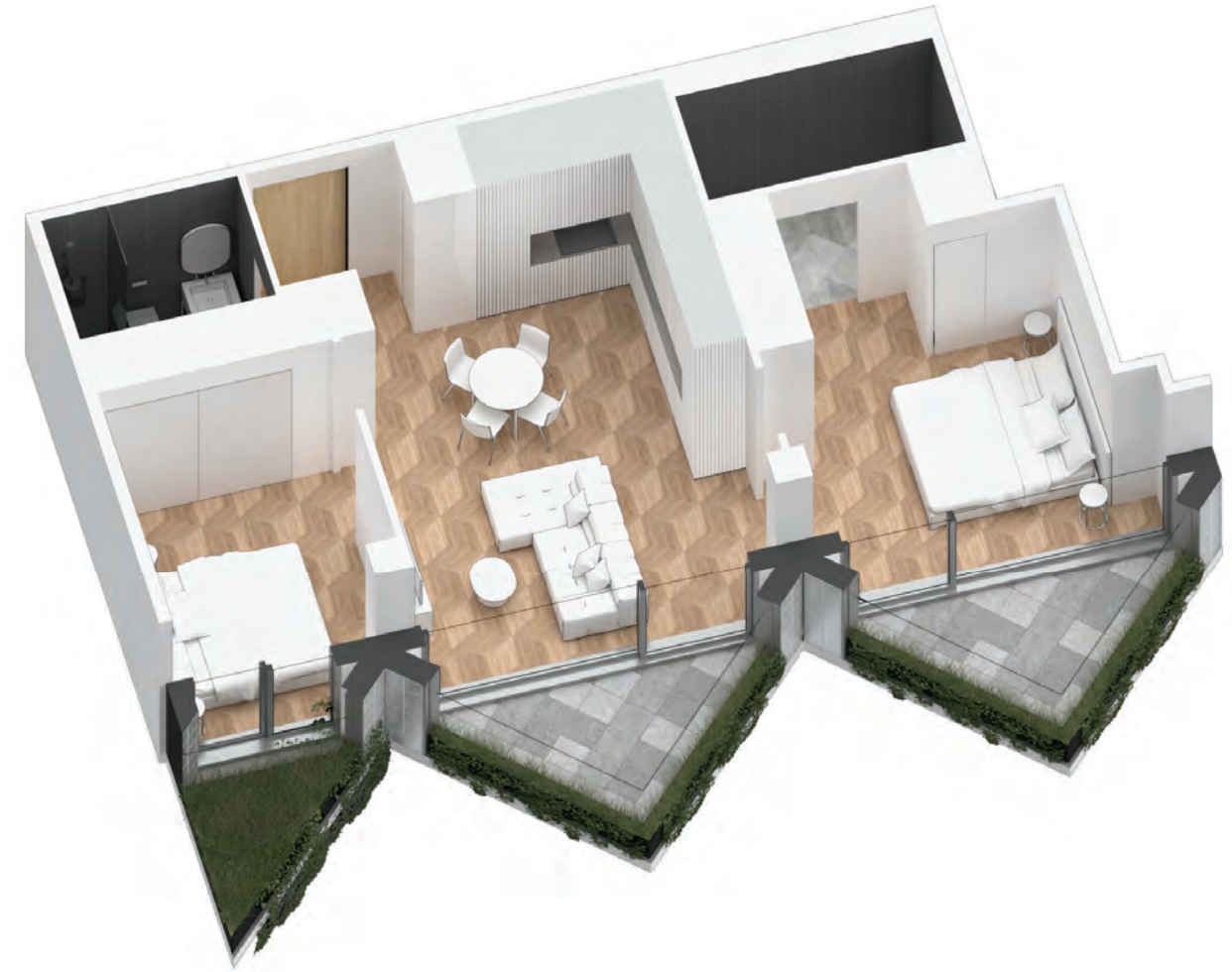
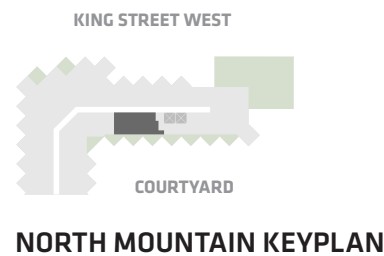
**2 Bedroom
2 Bathroom**

**Total Living:
1014 ft²**

Interior Living:
793 ft²

Exterior Living:
222 ft²

LIVING	14' 6" X 8' 0"
DINING	10' 10" X 9' 1"
MASTER BD	11' 5" X 9' 6"
BEDROOM 2	9' 6" X 10' 1"
BALCONY	13' 0" X 7' 9"



All dimensions and specifications are approximate. Certain plans are reverse or mirror image. Balcony square footages are estimated and may vary from that stated. Please see Sales Representative for details. Furniture not included. Refer to key plan for unit location and orientation. E. & O.E.

KING

HOME 611 N



2BD.50

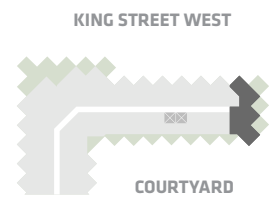
**2 Bedroom
2 Bathroom**

**Total Living:
1126 ft²**

Interior Living:
1010 ft²

Exterior Living:
116 ft²

LIVING	11' 11" X 11' 7"
DINING	19' 4" X 10' 7"
MASTER BD	15' 5" X 11' 9"
BEDROOM 2	13' 1" X 11' 9"
BALCONY	4' 11" X 11' 0"



NORTH MOUNTAIN KEYPLAN



All dimensions and specifications are approximate. Certain plans are reverse or mirror image. Balcony square footages are estimated and may vary from that stated. Please see Sales Representative for details. Furniture not included. Refer to key plan for unit location and orientation. E. & O.E.

KING

HOME 701 N



2BD.06

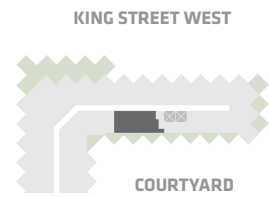
**2 Bedroom
2 Bathroom**

**Total Living:
1015 ft²**

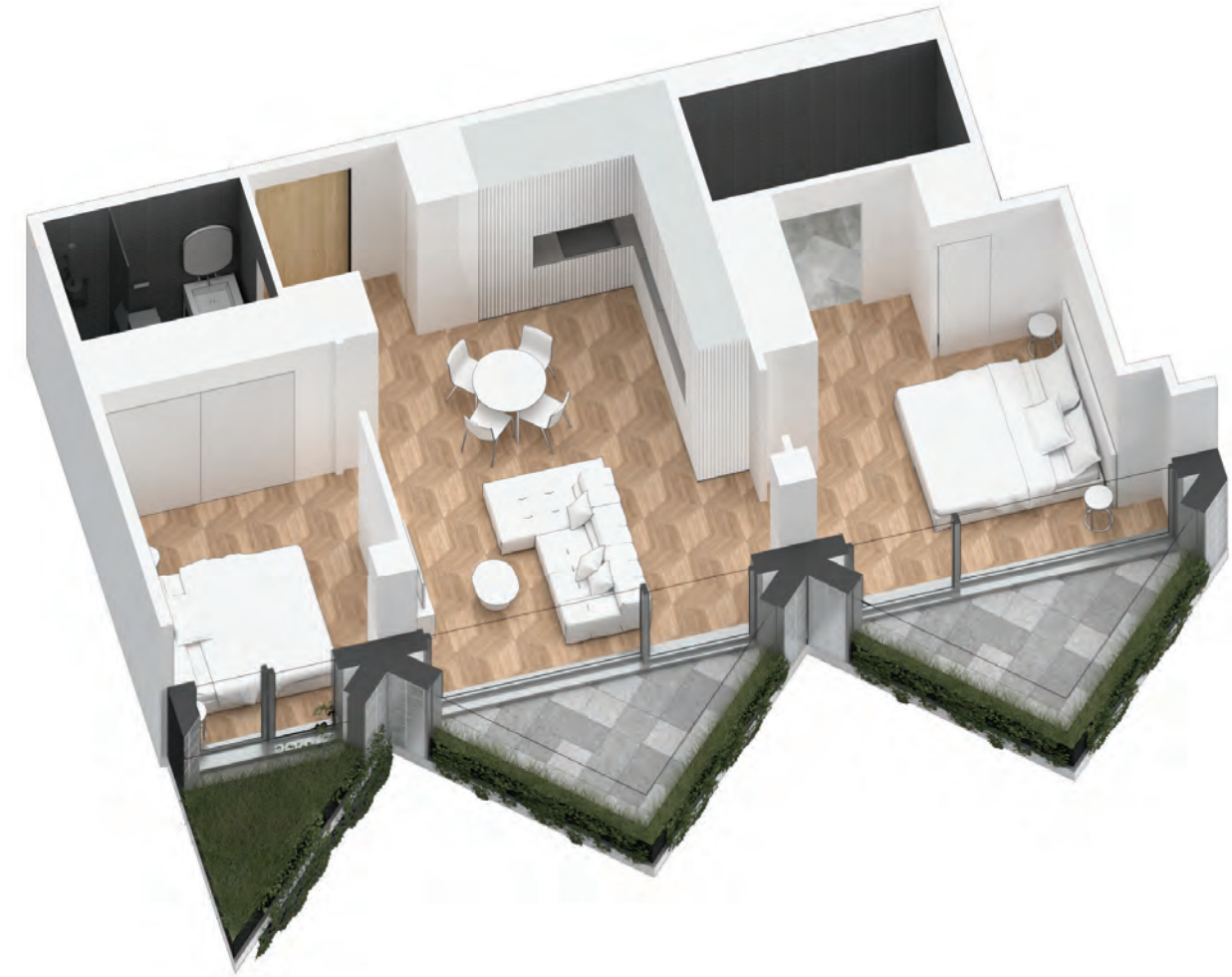
Interior Living:
794 ft²

Exterior Living:
220 ft²

LIVING	14' 6" X 8' 0"
DINING	10' 10" X 9' 1"
MASTER BD	11' 5" X 9' 6"
BEDROOM 2	9' 6" X 10' 1"
BALCONY	13' 0" X 7' 9"



NORTH MOUNTAIN KEYPLAN



All dimensions and specifications are approximate. Certain plans are reverse or mirror image. Balcony square footages are estimated and may vary from that stated. Please see Sales Representative for details. Furniture not included. Refer to key plan for unit location and orientation. E. & O.E.

KING

HOME 710 N



2BD.50

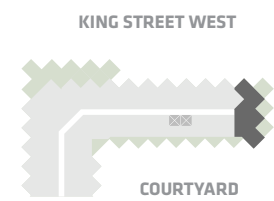
2 Bedroom
2 Bathroom

Total Living:
1126 ft²

Interior Living:
1010 ft²

Exterior Living:
116 ft²

LIVING	11' 11" X 11' 7"
DINING	19' 4" X 10' 7"
MASTER BD	15' 5" X 11' 9"
BEDROOM 2	13' 1" X 11' 9"
BALCONY	4' 11" X 11' 0"



NORTH MOUNTAIN KEYPLAN



All dimensions and specifications are approximate. Certain plans are reverse or mirror image. Balcony square footages are estimated and may vary from that stated. Please see Sales Representative for details. Furniture not included. Refer to key plan for unit location and orientation. E. & O.E.

KING

HOME 1007 N



2BD.32

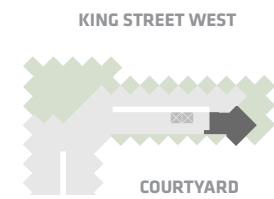
**2 Bedroom
2 Bathroom**

**Total Living:
1093 ft²**

Interior Living:
838 ft²

Exterior Living:
255 ft²

LIVING	10' 3" x 11' 5"
DINING	13' 11" x 8' 9"
MASTER BD	10' 7" x 8' 11"
BEDROOM 2	10' 5" x 8' 7"
BALCONY	13' 0" x 7' 9"
TERRACE	8' 3" x 6' 8"



NORTH MOUNTAIN KEYPLAN



All dimensions and specifications are approximate. Certain plans are reverse or mirror image. Balcony square footages are estimated and may vary from that stated. Please see Sales Representative for details. Furniture not included. Refer to key plan for unit location and orientation. E. & O.E.

KING

HOME 1002 N



2BD.23

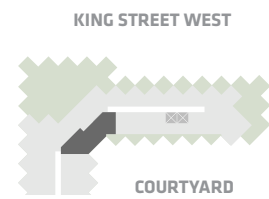
**2 Bedroom
2 Bathroom**

**Total Living:
1013 ft²**

Interior Living:
969 ft²

Exterior Living:
44 ft²

LIVING/ DINING	15' 10" x 15' 8"
MASTER BD	14' 8" x 13' 7"
BEDROOM 2	9' 11" x 8' 6"



NORTH MOUNTAIN KEYPLAN



All dimensions and specifications are approximate. Certain plans are reverse or mirror image. Balcony square footages are estimated and may vary from that stated. Please see Sales Representative for details. Furniture not included. Refer to key plan for unit location and orientation. E. & O.E.

KING

HOME 1001 N



2BD.06

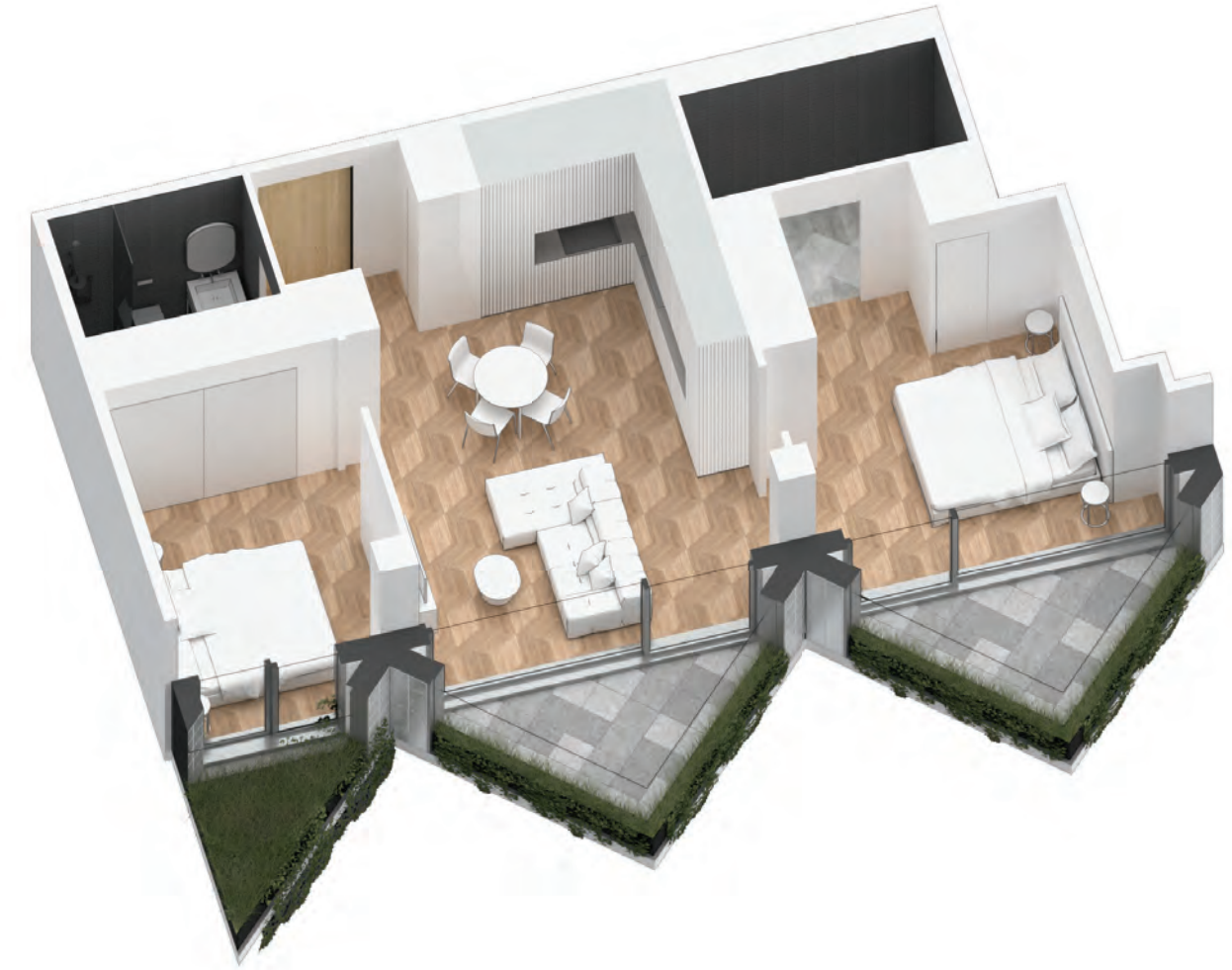
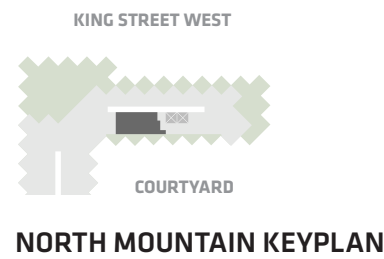
**2 Bedroom
2 Bathroom**

**Total Living:
1016 ft²**

Interior Living:
796 ft²

Exterior Living:
221 ft²

LIVING	14' 6" X 8' 0"
DINING	10' 10" X 9' 1"
MASTER BD	11' 5" X 9' 6"
BEDROOM 2	9' 6" X 10' 1"
BALCONY	13' 0" X 7' 9"



All dimensions and specifications are approximate. Certain plans are reverse or mirror image. Balcony square footages are estimated and may vary from that stated. Please see Sales Representative for details. Furniture not included. Refer to key plan for unit location and orientation. E. & O.E.

KING

HOME 801 N



2BD.06

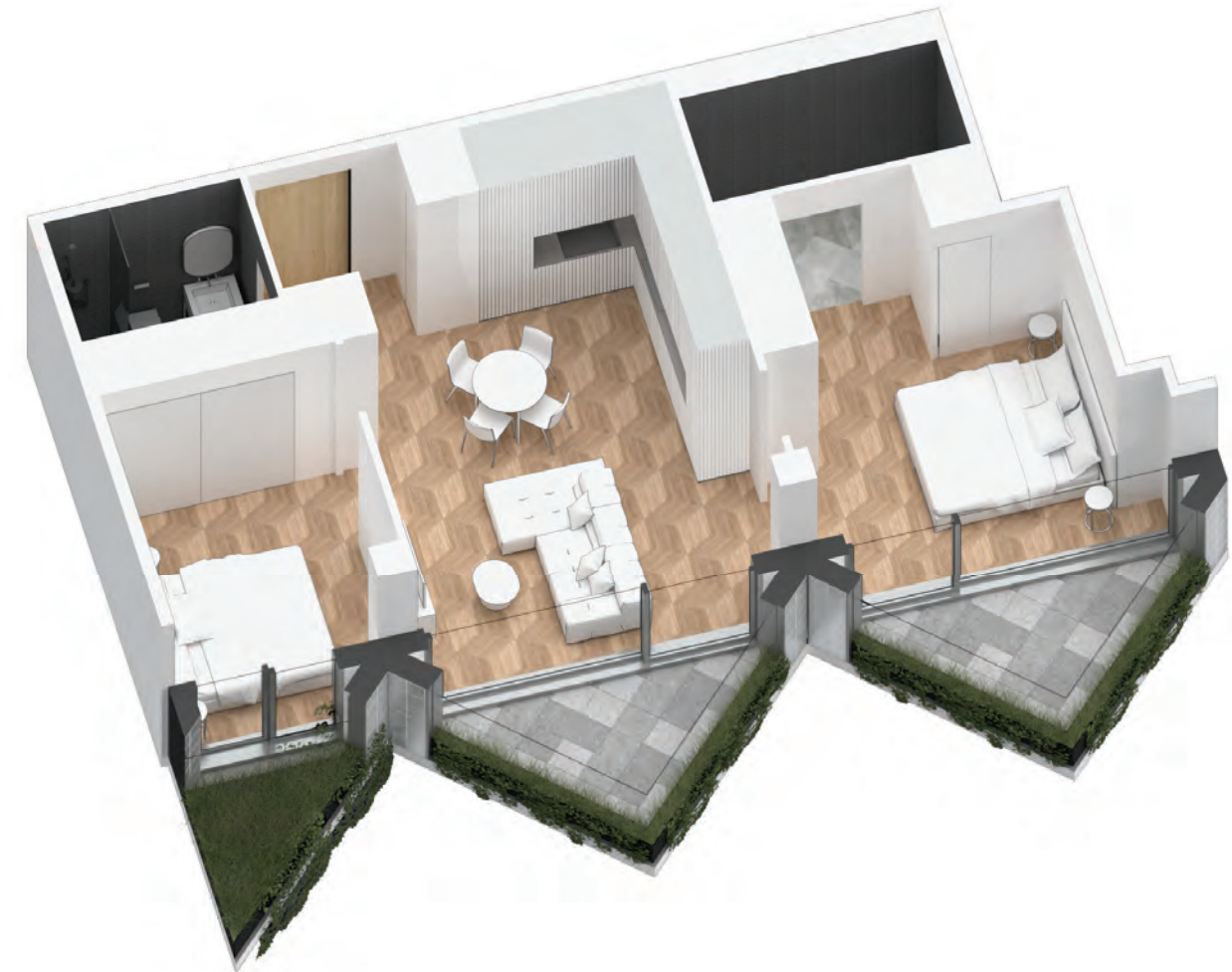
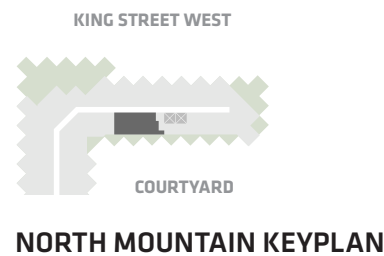
**2 Bedroom
2 Bathroom**

**Total Living:
1015 ft²**

Interior Living:
794 ft²

Exterior Living:
221 ft²

LIVING	14' 6" X 8' 0"
DINING	10' 10" X 9' 1"
MASTER BD	11' 5" X 9' 6"
BEDROOM 2	9' 6" X 10' 1"
BALCONY	13' 0" X 7' 9"



All dimensions and specifications are approximate. Certain plans are reverse or mirror image. Balcony square footages are estimated and may vary from that stated. Please see Sales Representative for details. Furniture not included. Refer to key plan for unit location and orientation. E. 6 O.E.

KING

HOME 901 N



2BD.06

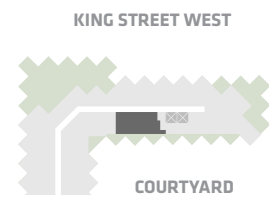
**2 Bedroom
2 Bathroom**

**Total Living:
1015 ft²**

Interior Living:
794ft²

Exterior Living:
221 ft²

LIVING	14' 6" X 8' 0"
DINING	10' 10" X 9' 1"
MASTER BD	11' 5" X 9' 6"
BEDROOM 2	9' 6" X 10' 1"
BALCONY	13' 0" X 7' 9"



NORTH MOUNTAIN KEYPLAN



All dimensions and specifications are approximate. Certain plans are reverse or mirror image. Balcony square footages are estimated and may vary from that stated. Please see Sales Representative for details. Furniture not included. Refer to key plan for unit location and orientation. E. & O.E.

KING

HOME 803 N



2BD.27

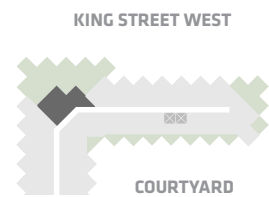
**2 Bedroom
2 Bathroom**

**Total Living:
1148 ft²**

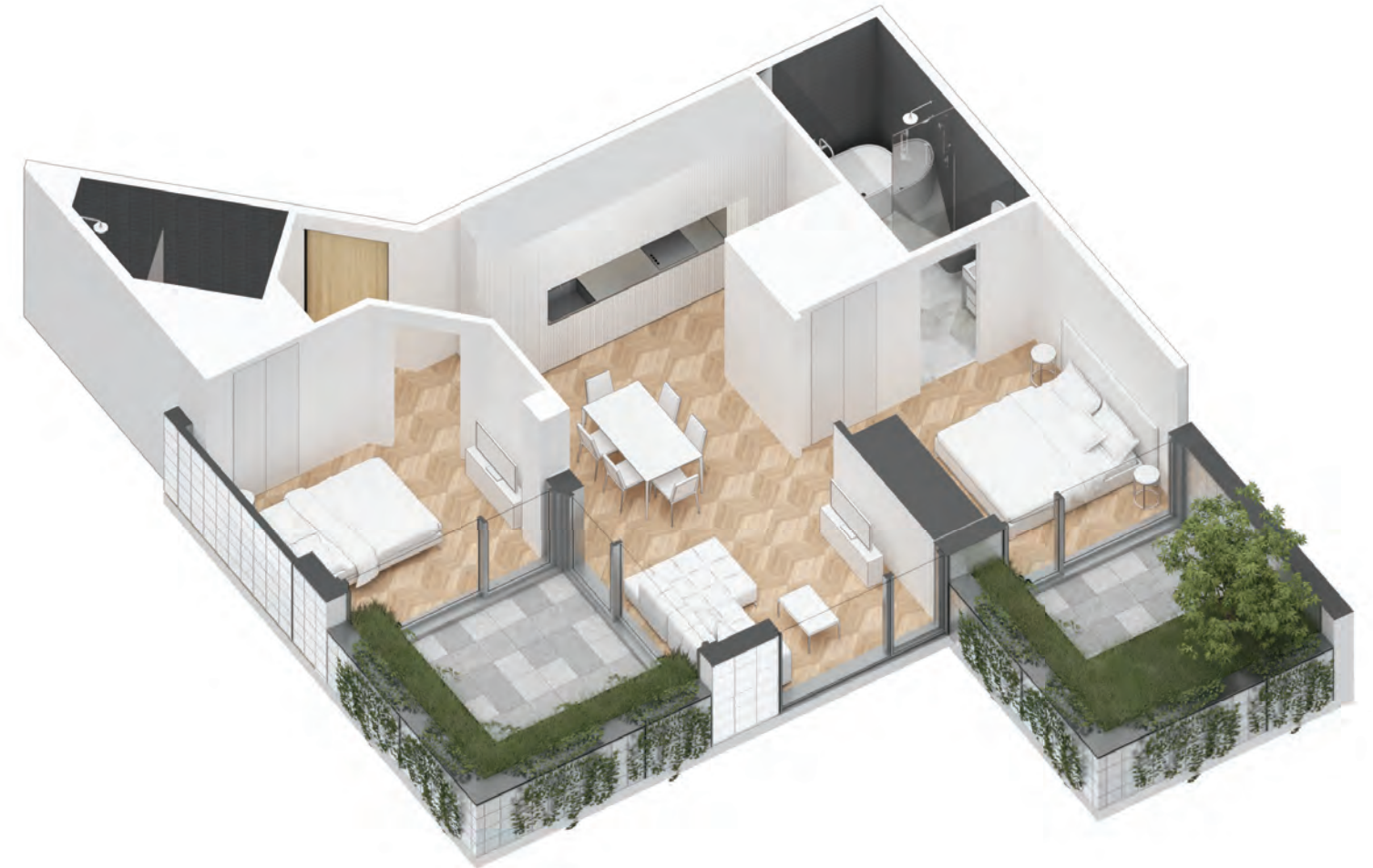
Interior Living:
861 ft²

Exterior Living:
287 ft²

LIVING	10' 11" X 11' 11"
DINING	10' 11" X 9' 8"
MASTER BD	9' 9" X 11' 5"
BEDROOM 2	11' 8" X 9' 8"
TERRACE A	9' 1" X 9' 1"
TERRACE B	9' 1" X 6' 8"



NORTH MOUNTAIN KEYPLAN



All dimensions and specifications are approximate. Certain plans are reverse or mirror image. Balcony square footages are estimated and may vary from that stated. Please see Sales Representative for details. Furniture not included. Refer to key plan for unit location and orientation. E. & O.E.

KING

HOME 910 N



2BD.19

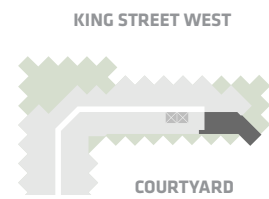
**2 Bedroom + Study
2 Bathroom**

**Total Living:
1237 ft²**

Interior Living:
917 ft²

Exterior Living:
320 ft²

LIVING	13' 4" X 9' 2"
DINING	13' 0" X 6' 8"
MASTER BD	12' 0" X 8' 11"
BEDROOM 2	11' 10" X 11' 4"
BALCONY	13' 0" X 7' 9"
TERRACE	9' 1" X 9' 1"



NORTH MOUNTAIN KEYPLAN



All dimensions and specifications are approximate. Certain plans are reverse or mirror image. Balcony square footages are estimated and may vary from that stated. Please see Sales Representative for details. Furniture not included. Refer to key plan for unit location and orientation. E. & O.E.

KING

HOME 1106 N



2BD.63

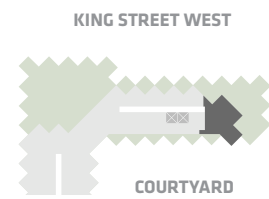
**2 Bedroom + Atelier
2 Bathroom**

**Total Living:
1396 ft²**

Interior Living:
1021 ft²

Exterior Living:
375 ft²

LIVING/ DINING	11' 0" X 16' 6"
MASTER BD	12' 11" X 9' 6"
BEDROOM 2	10' 0" X 10' 10"
ATELIER	5' 9" X 5' 4"
BALCONY	13' 0" X 7' 9"
TERRACE	6' 8" X 9' 1"



NORTH MOUNTAIN KEYPLAN



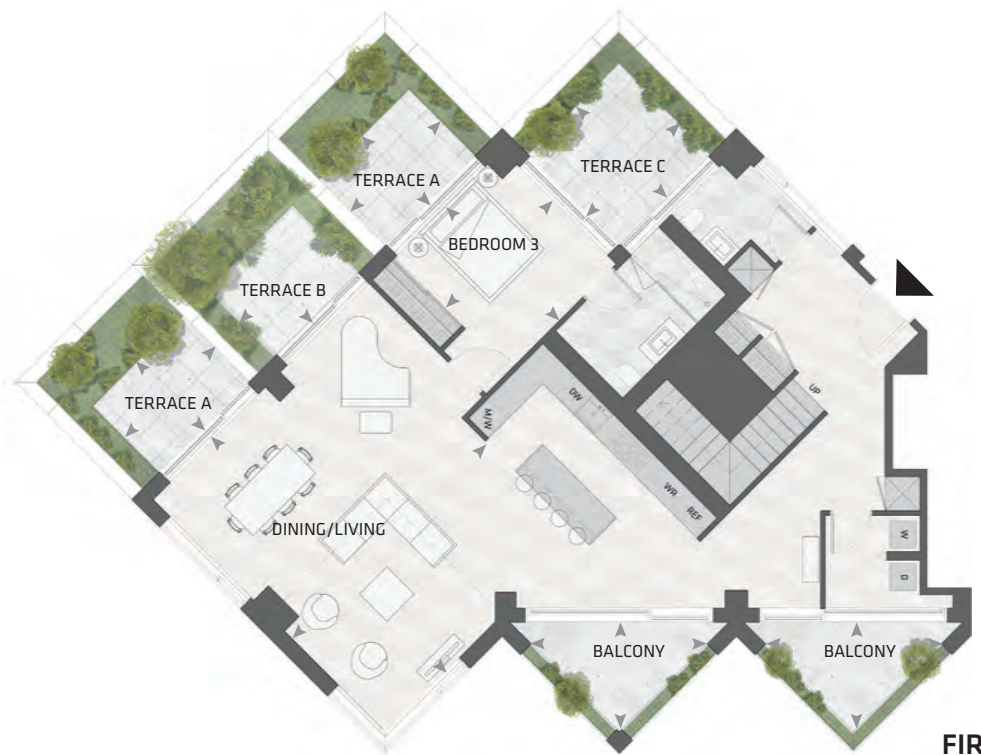
All dimensions and specifications are approximate. Certain plans are reverse or mirror image. Balcony square footages are estimated and may vary from that stated. Please see Sales Representative for details. Furniture not included. Refer to key plan for unit location and orientation. E. & O.E.

KING

HOME 1201 N



SECOND FLOOR



FIRST FLOOR



PH.01

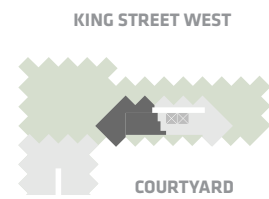
**3 Bedroom
3.5 Bathroom**

**Total Living:
3870 ft²**

Interior Living:
2786 ft²

Exterior Living:
1084 ft²

LIVING/ DINING	20' 0" X 23' 9"
FAMILY ROOM	10' 6" X 12' 0"
MASTER BD	11' 8" X 10' 11"
BEDROOM 2	10' 3" X 11' 6"
BEDROOM 3	11' 0" X 11' 8"
BALCONY	12' 8" X 7' 9"
TERRACE A	9' 1" X 6' 8"
TERRACE B	8' 3" X 6' 8"
TERRACE C	9' 1" X 9' 1"



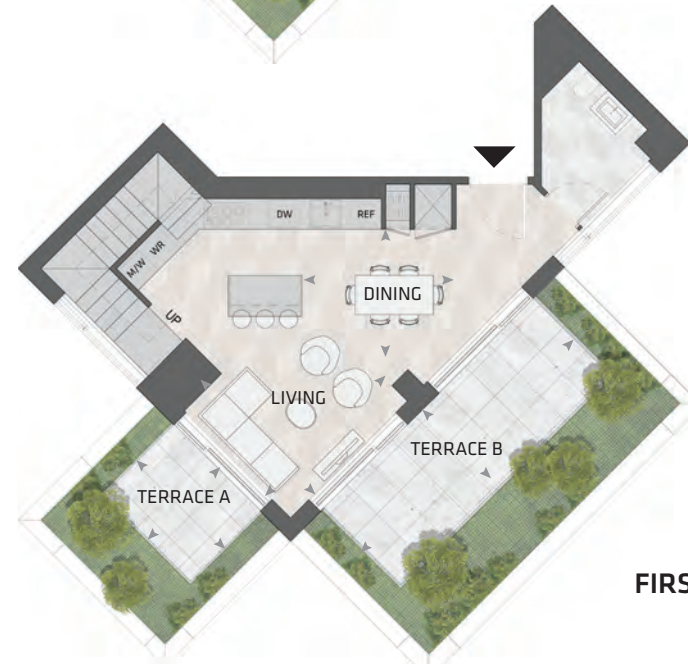
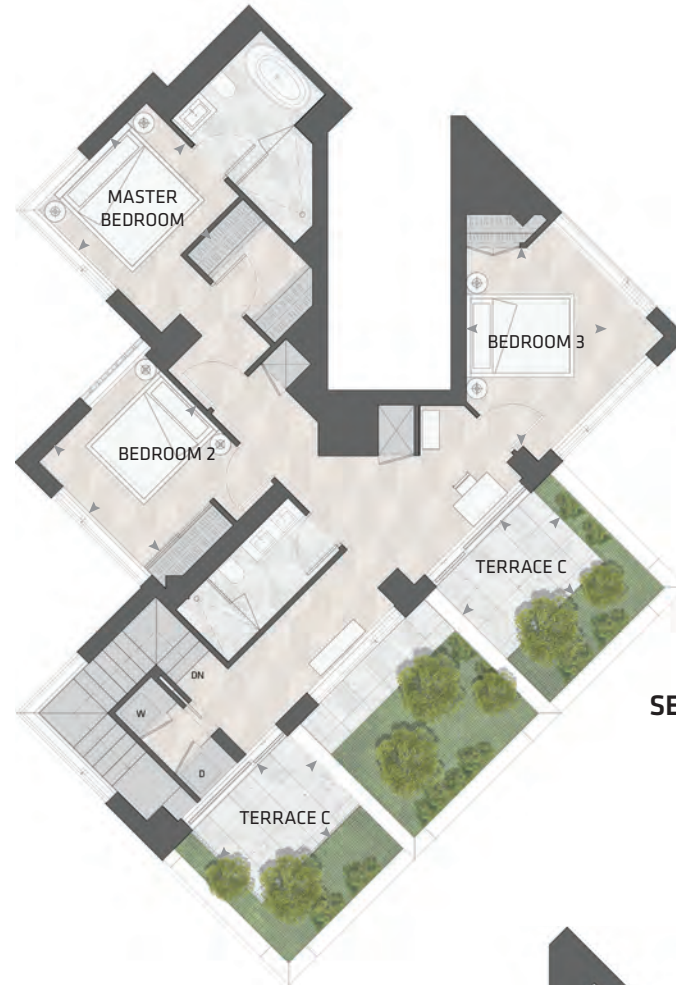
NORTH MOUNTAIN KEYPLAN



All dimensions and specifications are approximate. Certain plans are reverse or mirror image. Balcony square footages are estimated and may vary from that stated. Please see Sales Representative for details. Furniture not included. Refer to key plan for unit location and orientation. E. 6 O.E.

KING

HOME 1202 N



PH.02

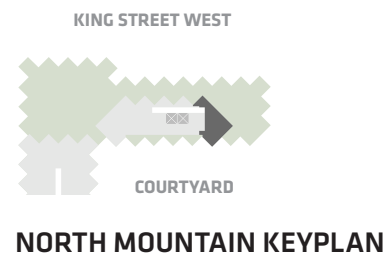
**3 Bedroom
2.5 Bathroom**

**Total Living:
2569ft²**

Interior Living:
1805 ft²

Exterior Living:
764 ft²

LIVING	11' 1" X 10' 2"
DINING	6' 8" X 9' 6"
MASTER BD	8' 10" X 10' 3"
BEDROOM 2	10' 0" X 10' 2"
BEDROOM 3	13' 9" X 10' 2"
TERRACE A	6' 8" X 9' 1"
TERRACE B	20' 4" X 6' 8"
TERRACE C	8' 3" X 6' 8"



All dimensions and specifications are approximate. Certain plans are reverse or mirror image. Balcony square footages are estimated and may vary from that stated. Please see Sales Representative for details. Furniture not included. Refer to key plan for unit location and orientation. E. 6 O.E.

KING

HOME 1103 N



3BD.3B

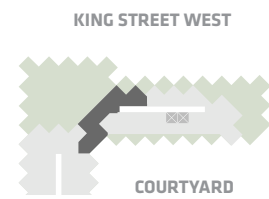
**3 Bedroom
2 Bathroom**

**Total Living:
1641 ft²**

Interior Living:
1354 ft²

Exterior Living:
287 ft²

LIVING	12' 8" X 11' 0"
DINING	9' 1" X 8' 11"
MASTER BD	14' 4" X 10' 1"
BEDROOM 2	8' 11" X 10' 9"
BEDROOM 3	12' 11" X 14' 9"
TERRACE	9' 1" X 6' 8"



NORTH MOUNTAIN KEYPLAN



All dimensions and specifications are approximate. Certain plans are reverse or mirror image. Balcony square footages are estimated and may vary from that stated. Please see Sales Representative for details. Furniture not included. Refer to key plan for unit location and orientation. E. & O.E.

KING

HOME 1003 N



3BD.28

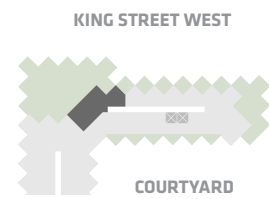
**3 Bedroom
2 Bathroom**

**Total Living:
1281 ft²**

Interior Living:
994 ft²

Exterior Living:
287 ft²

LIVING	13' 4" x 7' 6"
DINING	13' 4" x 8' 8"
MASTER BD	10' 1" x 10' 2"
BEDROOM 2	8' 8" x 10' 6"
BEDROOM 3	9' 8" x 10' 1"
TERRACE	9' 1" x 6' 8"



NORTH MOUNTAIN KEYPLAN



All dimensions and specifications are approximate. Certain plans are reverse or mirror image. Balcony square footages are estimated and may vary from that stated. Please see Sales Representative for details. Furniture not included. Refer to key plan for unit location and orientation. E. & O.E.

KING

HOME 505 N



3BD.03

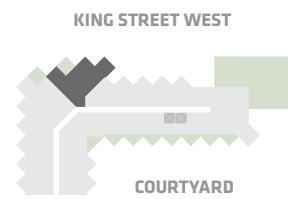
**3 Bedroom
2 Bathroom**

**Total Living:
1405 ft²**

Interior Living:
1262 ft²

Exterior Living:
143 ft²

LIVING	8' 2" X 11' 9"
DINING	5' 9" X 9' 8"
BEDROOM	8' 6" X 8' 8"
TERRACE	6' 8" X 9' 1"



NORTH MOUNTAIN KEYPLAN



All dimensions and specifications are approximate. Certain plans are reverse or mirror image. Balcony square footages are estimated and may vary from that stated. Please see Sales Representative for details. Furniture not included. Refer to key plan for unit location and orientation. E. & O.E.