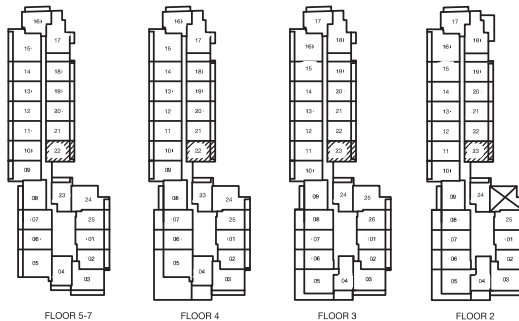
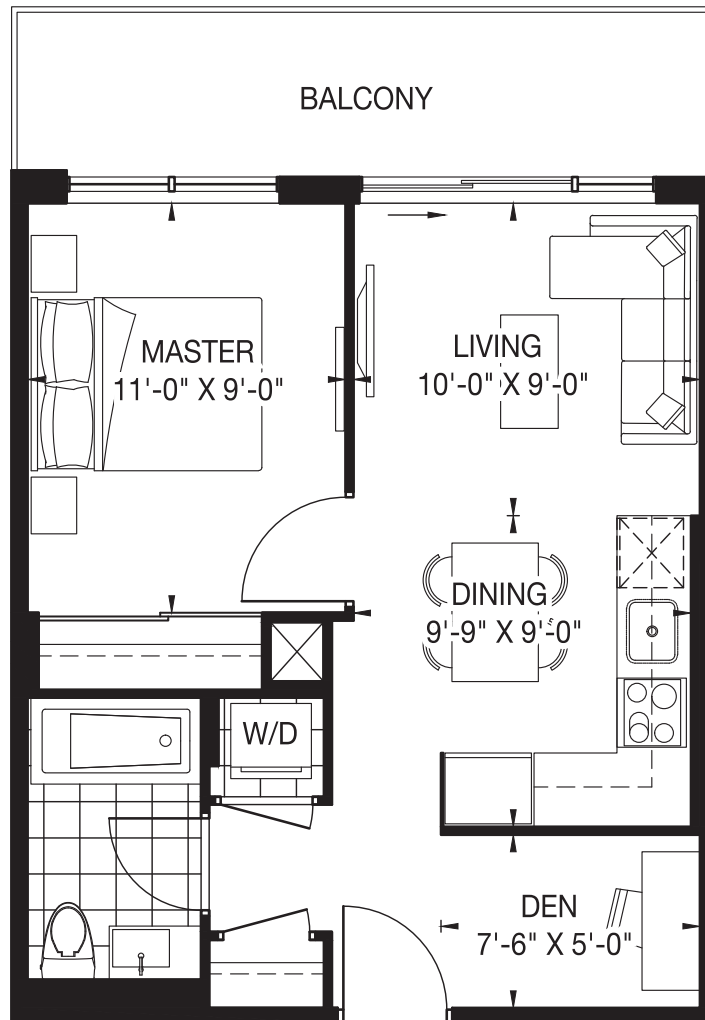


LUMINA

EMERALD CITY

PORCELAIN

One Bedroom + Den | Living Space 531 SF | Balcony 92 SF



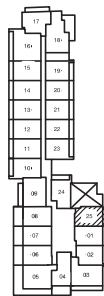
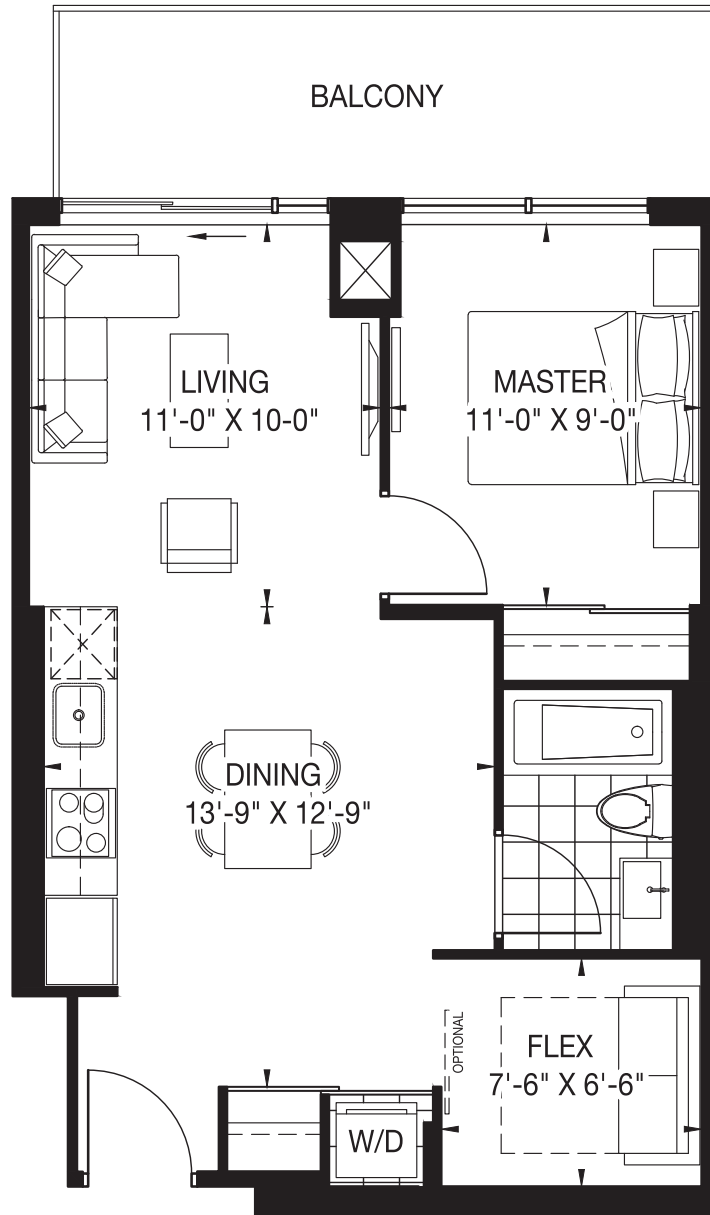
This plan is not to scale and is subject to architectural review and revision. The number of units per level and the number of floors may be reduced or increased at the vendor's sole discretion without notice. The purchaser acknowledges that the actual unit purchased may be a reverse layout to the plan shown. All materials, specifications, details and dimensions, if any, are approximate and subject to change without notice in order to comply with building site conditions and municipal, structural, vendor and/or architectural requirements. Actual living areas may vary from floor area stated. Floor areas have been measured and may vary in accordance with Bulletin #22 published by the Taroni Warranty Corporation. Bulkheads are not shown on this plan and may be located in areas of the Unit as required to provide venting and mechanical systems. Balconies, Terraces and Patios, if any, are exclusive use common elements shown for display purposes only and location and size are subject to change without notice. Window location, size and type may vary without notice. The length, width and directional position of the flooring are for illustration purposes only and may vary without notice. E.&O.E.

LUMINA

EMERALD CITY

DAISY

One Bedroom + Flex | Living Space 596 SF | Balcony 107 SF



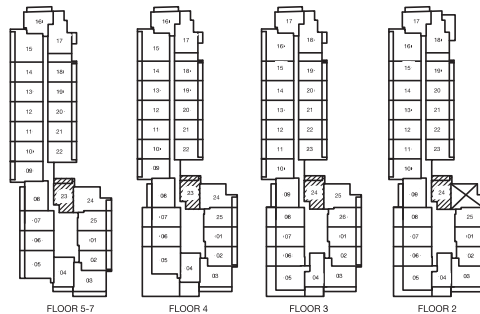
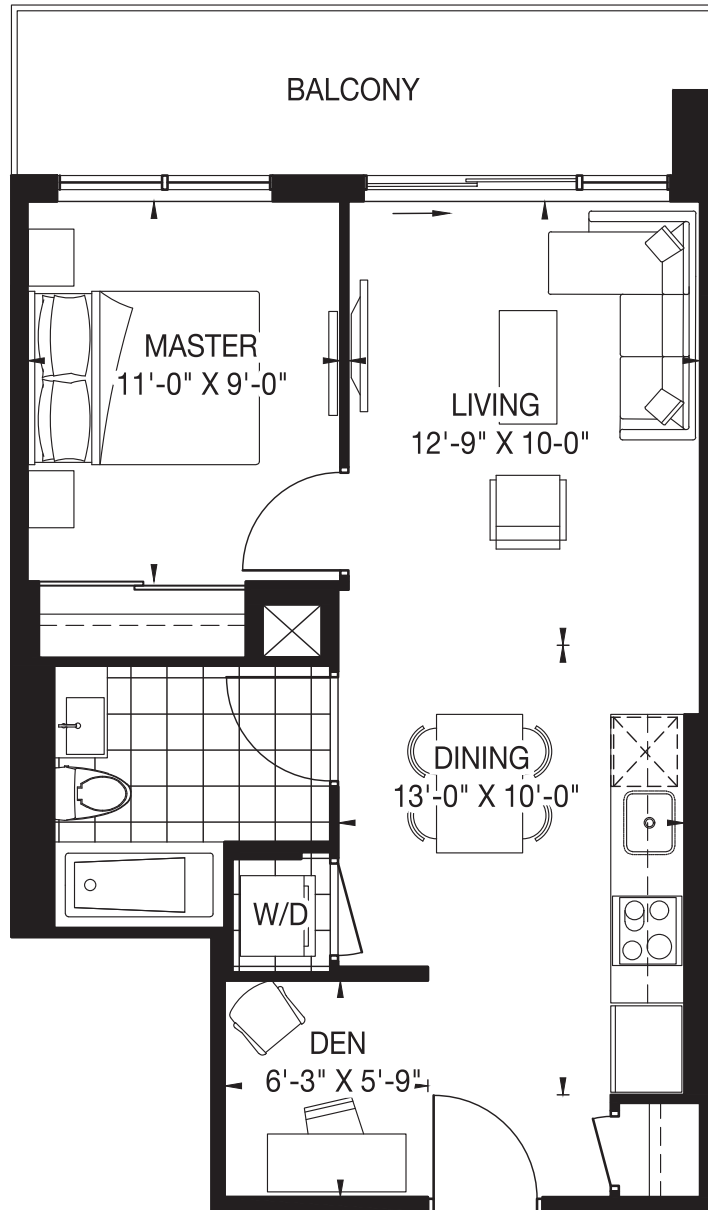
This plan is not to scale and is subject to architectural review and revision. The number of units per level and the number of floors may be reduced or increased at the vendor's sole discretion without notice. The purchaser acknowledges that the actual unit purchased may be a reverse layout to the plan shown. All materials, specifications, details and dimensions, if any, are approximate and subject to change without notice in order to comply with building site conditions and municipal, structural, vendor and/or architectural requirements. Actual living areas may vary from floor area stated. Floor areas have been measured and may vary in accordance with Bulletin #22 published by the Tarion Warranty Corporation. Bulkheads are not shown on this plan and may be located in areas of the Unit as required to provide venting and mechanical systems. Balconies, Terraces and Patios, if any, are exclusive use common elements shown for display purposes only and location and size are subject to change without notice. Window location, size and type may vary without notice. The length, width and directional position of the flooring are for illustration purposes only and may vary without notice. E.&O.E.

LUMINA

EMERALD CITY

PEARL

One Bedroom + Den | Living Space 598 SF | Balcony 98 SF



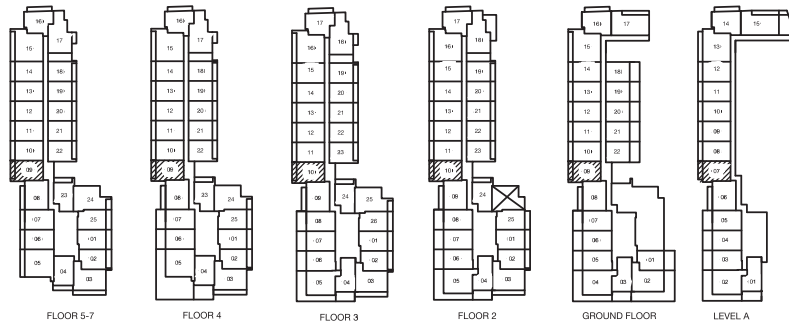
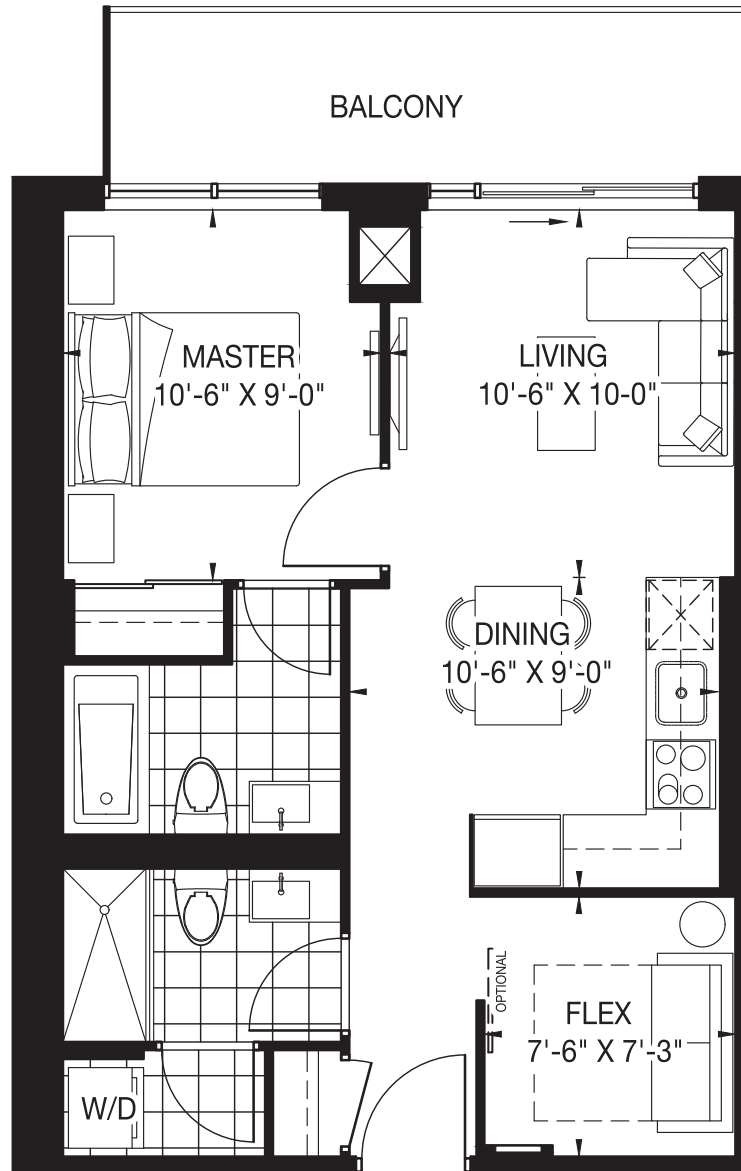
This plan is not to scale and is subject to architectural review and revision. The number of units per level and the number of floors may be reduced or increased at the vendor's sole discretion without notice. The purchaser acknowledges that the actual unit purchased may be a reverse layout to the plan shown. All materials, specifications, details and dimensions, if any, are approximate and subject to change without notice in order to comply with building site conditions and municipal, structural, vendor and/or architectural requirements. Actual living areas may vary from floor area stated. Floor areas have been measured and may vary in accordance with Bulletin #22 published by the Tarion Warranty Corporation. Bulkheads are not shown on this plan and may be located in areas of the Unit as required to provide venting and mechanical systems. Balconies, Terraces and Patios, if any, are exclusive use common elements shown for display purposes only and location and size are subject to change without notice. Window location, size and type may vary without notice. The length, width and directional position of the flooring are for illustration purposes only and may vary without notice. E.&O.E.

LUMINA

EMERALD CITY

SWAN

One Bedroom + Flex | Living Space 603 SF | Balcony 92 SF



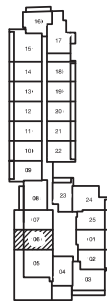
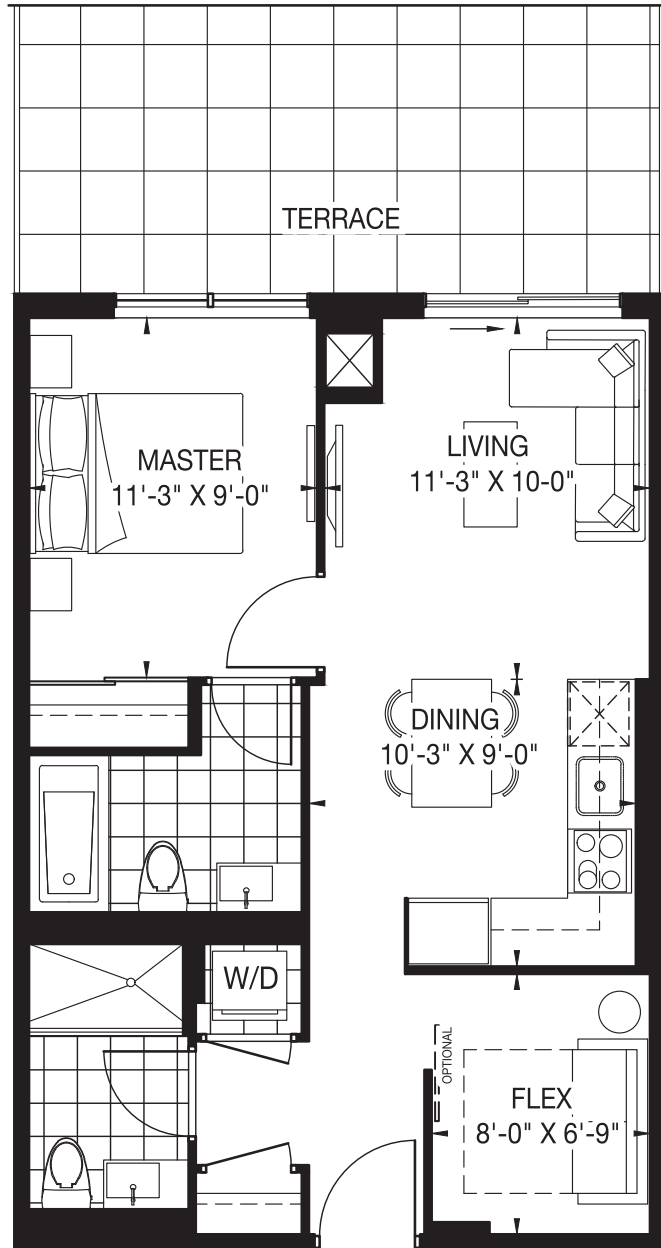
This plan is not to scale and is subject to architectural review and revision. The number of units per level and the number of floors may be reduced or increased at the vendor's sole discretion without notice. The purchaser acknowledges that the actual unit purchased may be a reverse layout to the plan shown. All materials, specifications, details and dimensions, if any, are approximate and subject to change without notice in order to comply with building site conditions and municipal, structural, vendor and/or architectural requirements. Actual living areas may vary from floor area stated. Floor areas have been measured and may vary in accordance with Bulletin #22 published by the Tarion Warranty Corporation. Bulkheads are not shown on this plan and may be located in areas of the Unit as required to provide venting and mechanical systems. Balconies, Terraces and Patios, if any, are exclusive use common elements shown for display purposes only and location and size are subject to change without notice. Window location, size and type may vary without notice. The length, width and directional position of the flooring are for illustration purposes only and may vary without notice. E.&O.E.

LUMINA

EMERALD CITY

IVORY (TERRACE)

One Bedroom + Flex | Living Space 608 SF | Terrace 200 SF



FLOOR 4



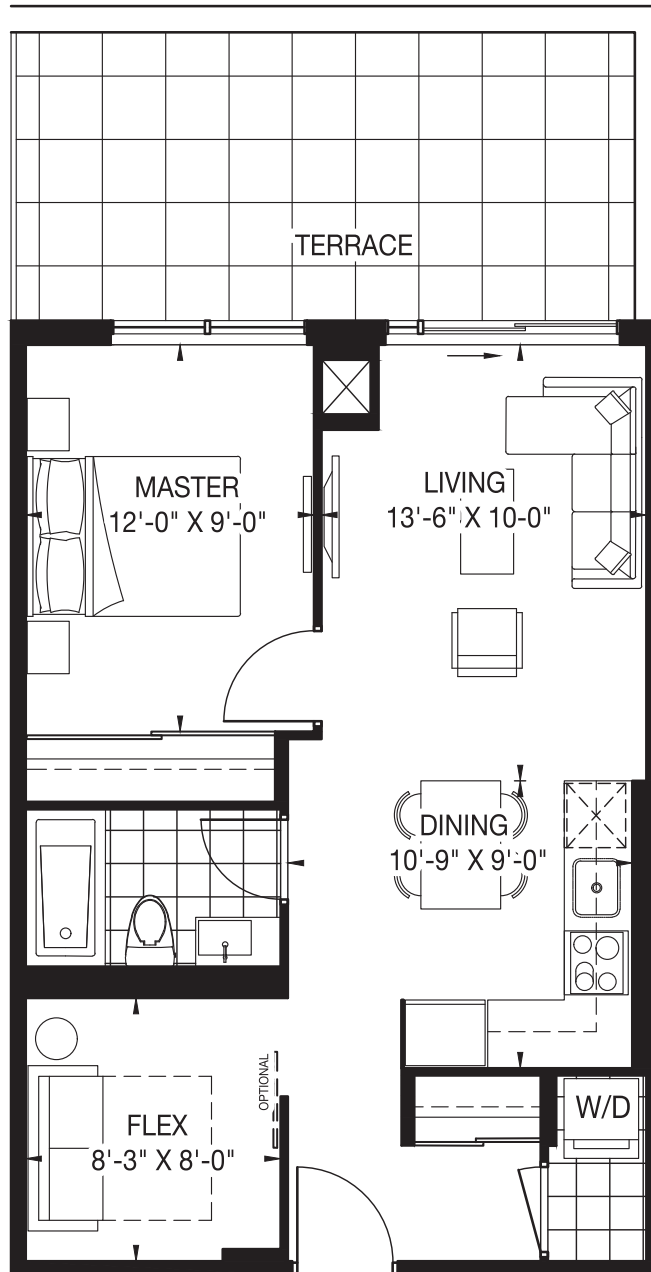
This plan is not to scale and is subject to architectural review and revision. The number of units per level and the number of floors may be reduced or increased at the vendor's sole discretion without notice. The purchaser acknowledges that the actual unit purchased may be a reverse layout to the plan shown. All materials, specifications, details and dimensions, if any, are approximate and subject to change without notice in order to comply with building site conditions and municipal, structural, vendor and/or architectural requirements. Actual living areas may vary from floor area stated. Floor areas have been measured and may vary in accordance with Bulletin #22 published by the Tarion Warranty Corporation. Bulkheads are not shown on this plan and may be located in areas of the Unit as required to provide venting and mechanical systems. Balconies, Terraces and Patios, if any, are exclusive use common elements shown for display purposes only and location and size are subject to change without notice. Window location, size and type may vary without notice. The length, width and directional position of the flooring are for illustration purposes only and may vary without notice. E.&O.E.

LUMINA

EMERALD CITY

VANILLA (TERRACE)

One Bedroom + Flex | Living Space 611 SF | Terrace 200 SF



FLOOR 4



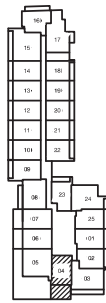
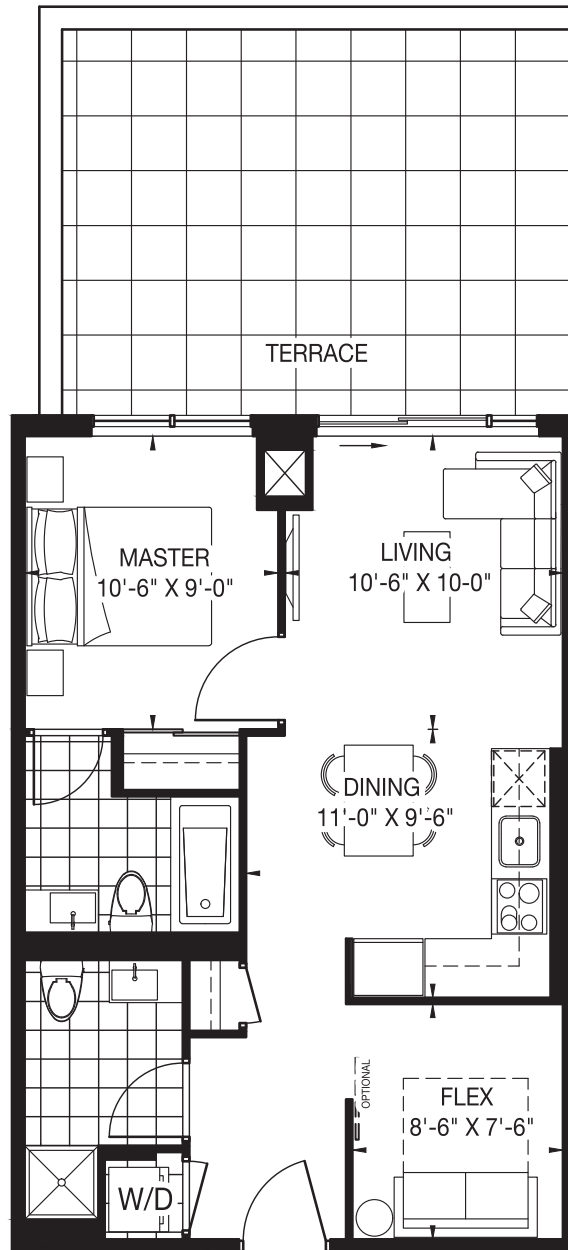
This plan is not to scale and is subject to architectural review and revision. The number of units per level and the number of floors may be reduced or increased at the vendor's sole discretion without notice. The purchaser acknowledges that the actual unit purchased may be a reverse layout to the plan shown. All materials, specifications, details and dimensions, if any, are approximate and subject to change without notice in order to comply with building site conditions and municipal, structural, vendor and/or architectural requirements. Actual living areas may vary from floor area stated. Floor areas have been measured and may vary in accordance with Bulletin #22 published by the Tarion Warranty Corporation. Bulkheads are not shown on this plan and may be located in areas of the Unit as required to provide venting and mechanical systems. Balconies, Terraces and Patios, if any, are exclusive use common elements shown for display purposes only and location and size are subject to change without notice. Window location, size and type may vary without notice. The length, width and directional position of the flooring are for illustration purposes only and may vary without notice. E.&O.E.

LUMINA

EMERALD CITY

CORNSILK (TERRACE)

One Bedroom + Flex | Living Space 623 SF | Terrace 300 SF



FLOOR 4



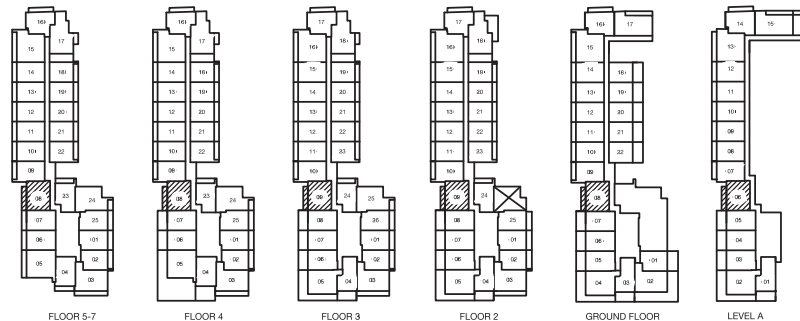
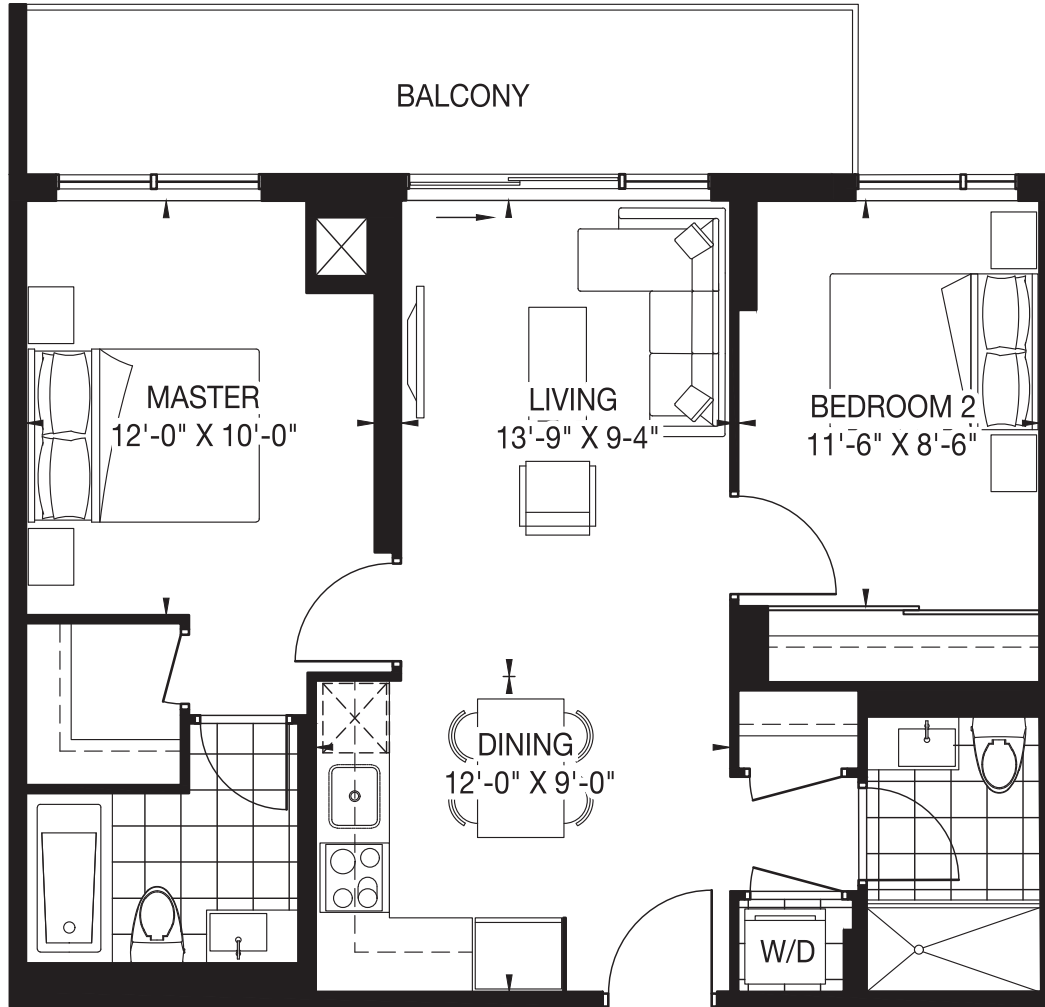
This plan is not to scale and is subject to architectural review and revision. The number of units per level and the number of floors may be reduced or increased at the vendor's sole discretion without notice. The purchaser acknowledges that the actual unit purchased may be a reverse layout to the plan shown. All materials, specifications, details and dimensions, if any, are approximate and subject to change without notice in order to comply with building site conditions and municipal, structural, vendor and/or architectural requirements. Actual living areas may vary from floor area stated. Floor areas have been measured and may vary in accordance with Bulletin #22 published by the Tarion Warranty Corporation. Bulkheads are not shown on this plan and may be located in areas of the Unit as required to provide venting and mechanical systems. Balconies, Terraces and Patios, if any, are exclusive use common elements shown for display purposes only and location and size are subject to change without notice. Window location, size and type may vary without notice. The length, width and directional position of the flooring are for illustration purposes only and may vary without notice. E.&O.E.

LUMINA

EMERALD CITY

CREAM

Two Bedroom | Living Space 732 SF | Balcony 118 SF



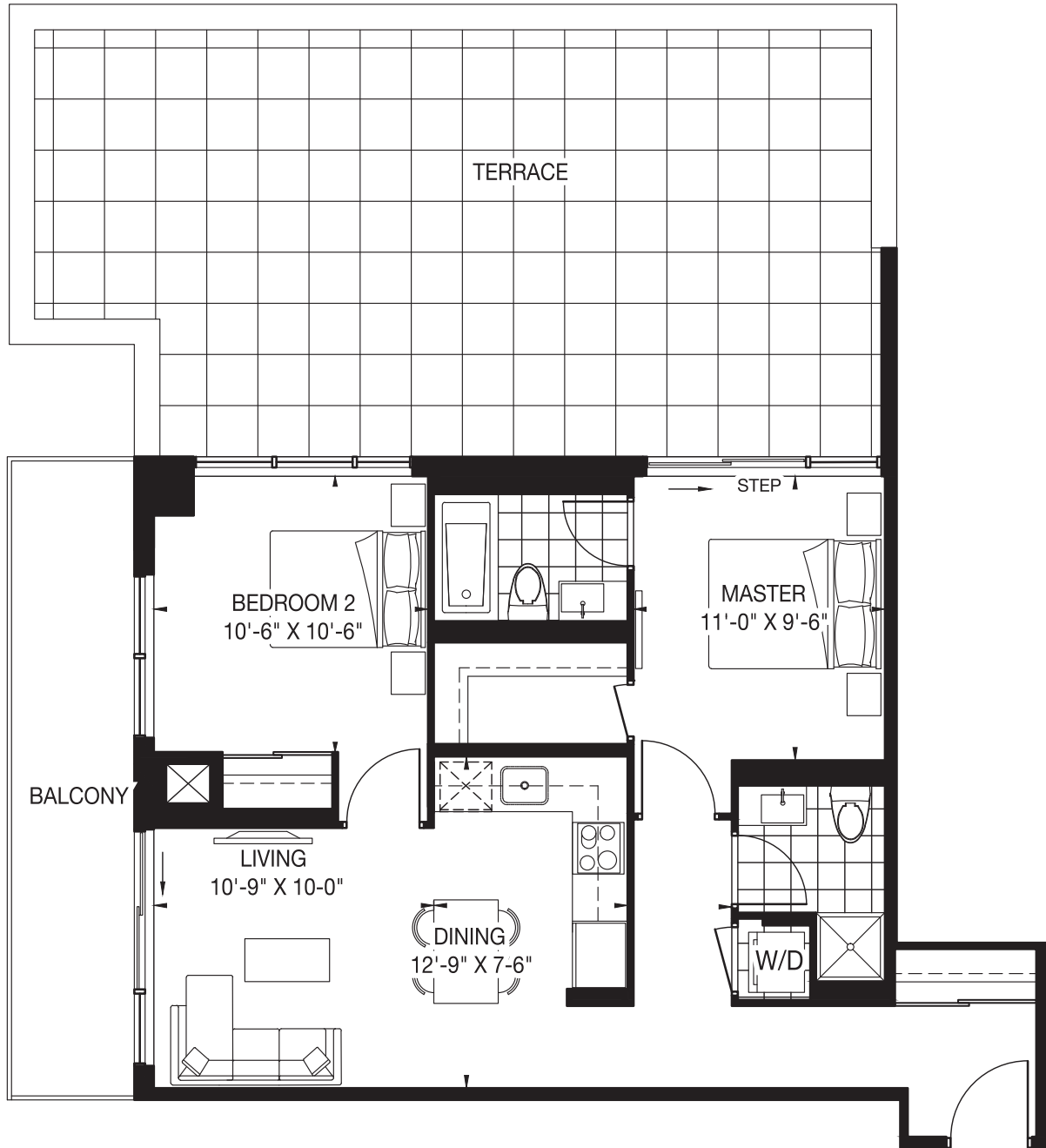
This plan is not to scale and is subject to architectural review and revision. The number of units per level and the number of floors may be reduced or increased at the vendor's sole discretion without notice. The purchaser acknowledges that the actual unit purchased may be a reverse layout to the plan shown. All materials, specifications, details and dimensions, if any, are approximate and subject to change without notice in order to comply with building site conditions and municipal, structural, vendor and/or architectural requirements. Actual living areas may vary from floor area stated. Floor areas have been measured and may vary in accordance with Bulletin #22 published by the Tarion Warranty Corporation. Bulkheads are not shown on this plan and may be located in areas of the Unit as required to provide venting and mechanical systems. Balconies, Terraces and Patios, if any, are exclusive use common elements shown for display purposes only and location and size are subject to change without notice. Window location, size and type may vary without notice. The length, width and directional position of the flooring are for illustration purposes only and may vary without notice. E.&O.E.

LUMINA

EMERALD CITY

CRYSTAL (TERRACE)

Two Bedroom | Living Space 780 SF | Balcony 123 SF | Terrace 580 SF



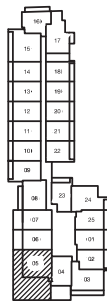
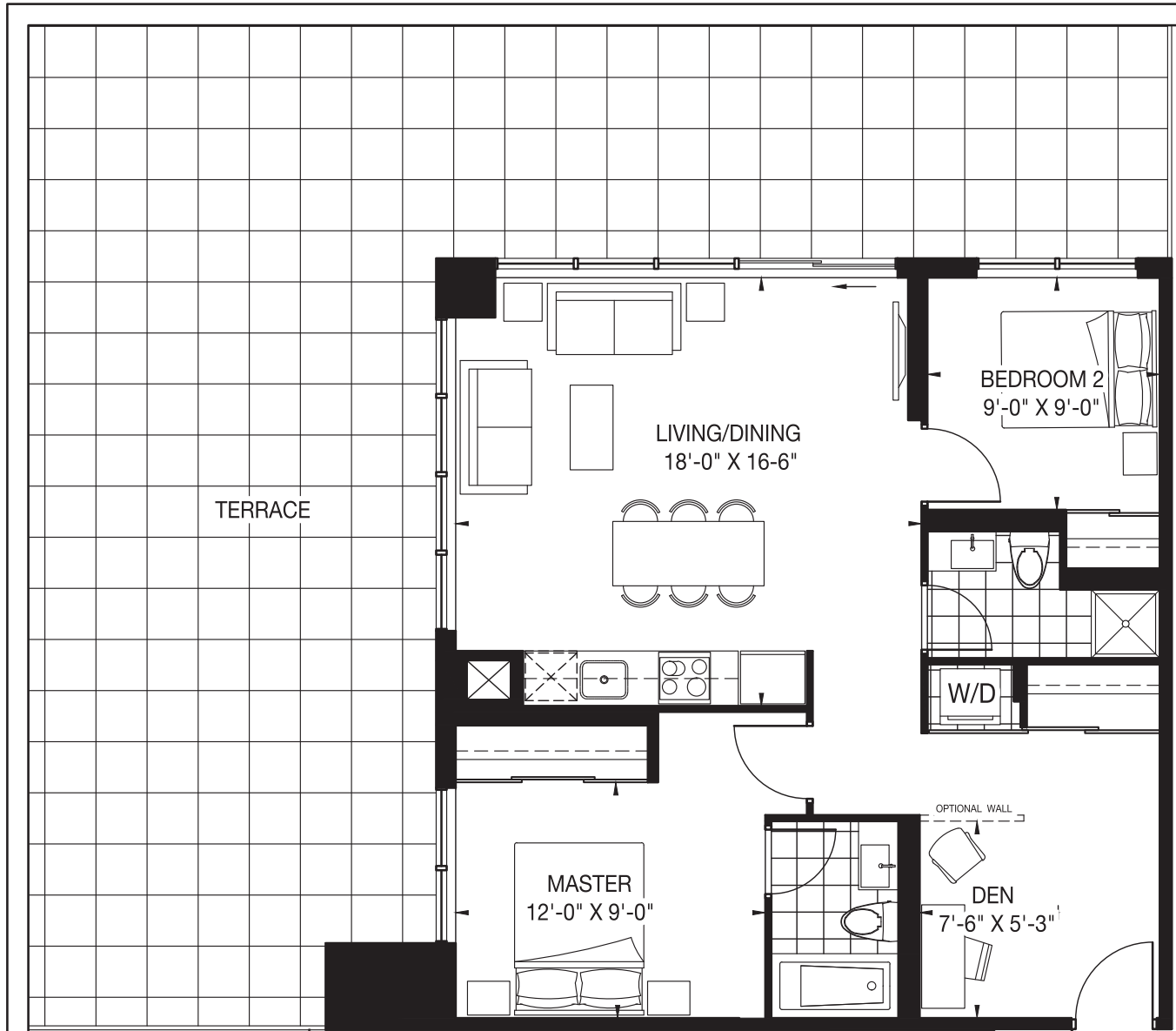
This plan is not to scale and is subject to architectural review and revision. The number of units per level and the number of floors may be reduced or increased at the vendor's sole discretion without notice. The purchaser acknowledges that the actual unit purchased may be a reverse layout to the plan shown. All materials, specifications, details and dimensions, if any, are approximate and subject to change without notice in order to comply with building site conditions and municipal, structural, vendor and/or architectural requirements. Actual living areas may vary from floor area stated. Floor areas have been measured and may vary in accordance with Bulletin #22 published by the Tarion Warranty Corporation. Bulkheads are not shown on this plan and may be located in areas of the Unit as required to provide venting and mechanical systems. Balconies, Terraces and Patios, if any, are exclusive use common elements shown for display purposes only and location and size are subject to change without notice. Window location, size and type may vary without notice. The length, width and directional position of the flooring are for illustration purposes only and may vary without notice. E.&O.E.

LUMINA

EMERALD CITY

CHAMPAGNE (TERRACE)

Two Bedroom + Den | Living Space 852 SF | Terrace 1186 SF



FLOOR 4



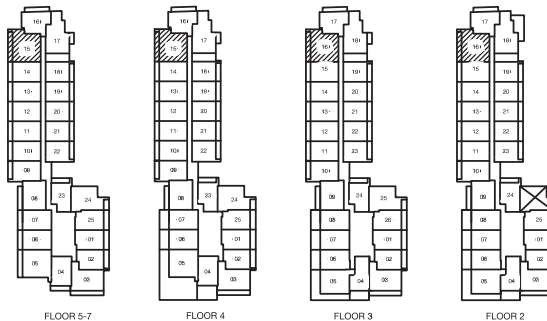
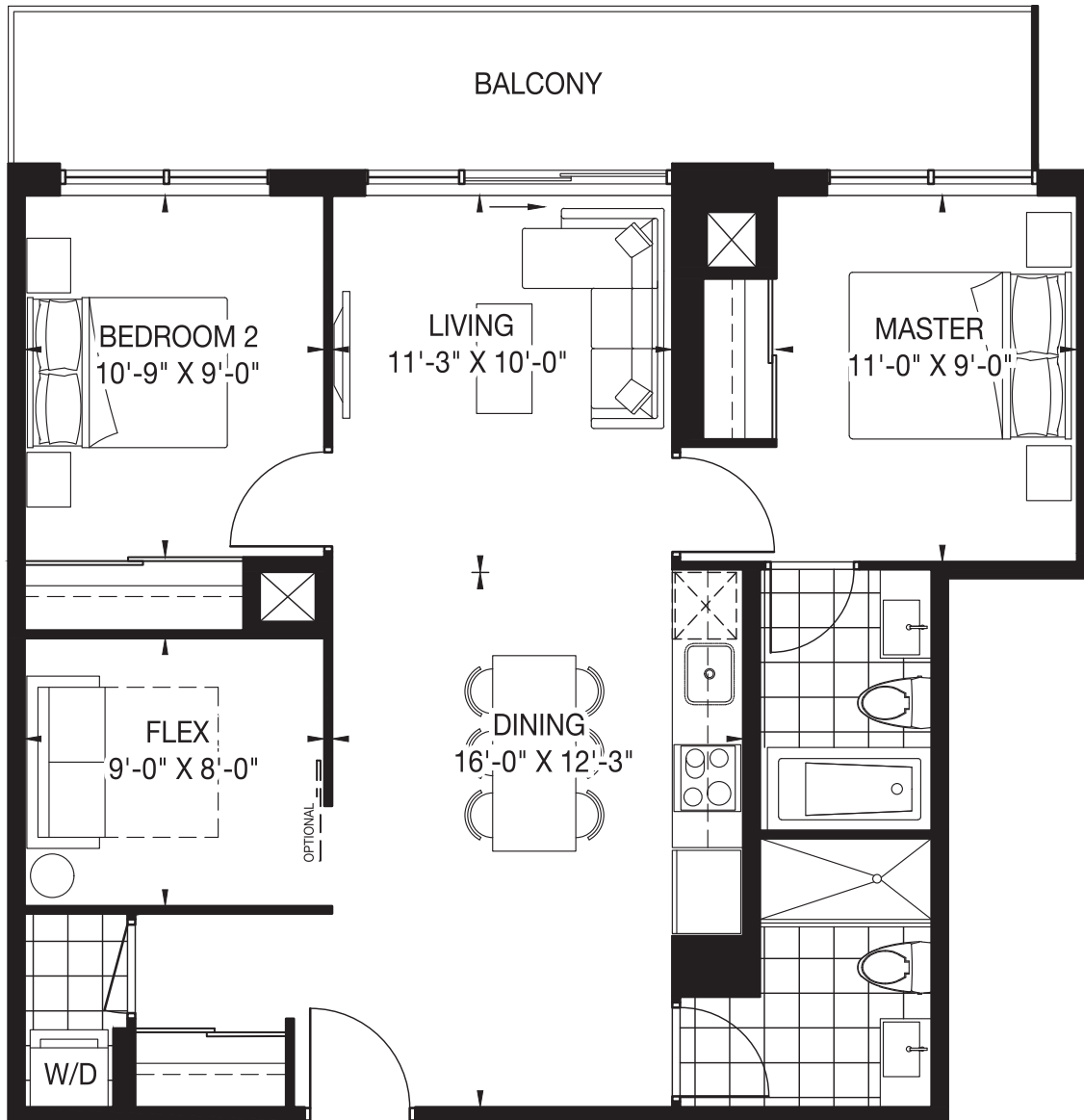
This plan is not to scale and is subject to architectural review and revision. The number of units per level and the number of floors may be reduced or increased at the vendor's sole discretion without notice. The purchaser acknowledges that the actual unit purchased may be a reverse layout to the plan shown. All materials, specifications, details and dimensions, if any, are approximate and subject to change without notice in order to comply with building site conditions and municipal, structural, vendor and/or architectural requirements. Actual living areas may vary from floor area stated. Floor areas have been measured and may vary in accordance with Bulletin #22 published by the Tarion Warranty Corporation. Bulkheads are not shown on this plan and may be located in areas of the Unit as required to provide venting and mechanical systems. Balconies, Terraces and Patios, if any, are exclusive use common elements shown for display purposes only and location and size are subject to change without notice. Window location, size and type may vary without notice. The length, width and directional position of the flooring are for illustration purposes only and may vary without notice. E.&O.E.

LUMINA

EMERALD CITY

LACE

Two Bedroom + Flex | Living Space 894 SF | Balcony 151 SF



This plan is not to scale and is subject to architectural review and revision. The number of units per level and the number of floors may be reduced or increased at the vendor's sole discretion without notice. The purchaser acknowledges that the actual unit purchased may be a reverse layout to the plan shown. All materials, specifications, details and dimensions, if any, are approximate and subject to change without notice in order to comply with building site conditions and municipal, structural, vendor and/or architectural requirements. Actual living areas may vary from floor area stated. Floor areas have been measured and may vary in accordance with Bulletin #22 published by the Tarion Warranty Corporation. Bulkheads are not shown on this plan and may be located in areas of the Unit as required to provide venting and mechanical systems. Balconies, Terraces and Patios, if any, are exclusive use common elements shown for display purposes only and location and size are subject to change without notice. Window location, size and type may vary without notice. The length, width and directional position of the flooring are for illustration purposes only and may vary without notice. E.&O.E.