



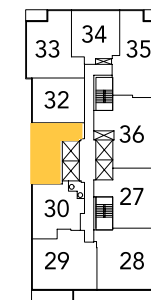
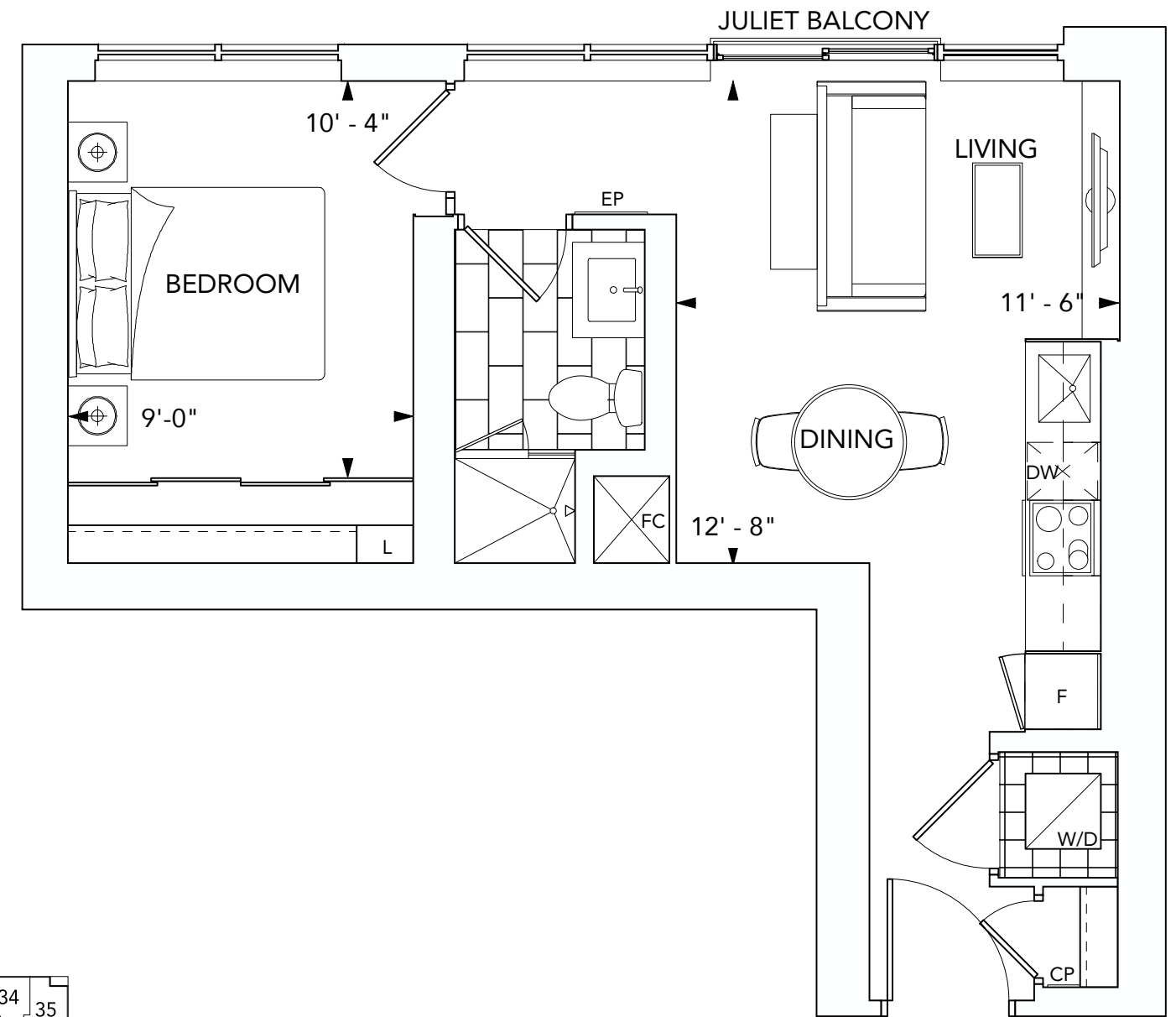
FLOOR PLANS

BLOOR PROMENADE

PROMENADE SUITES

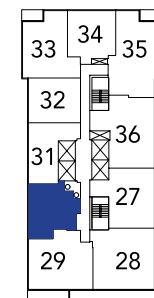
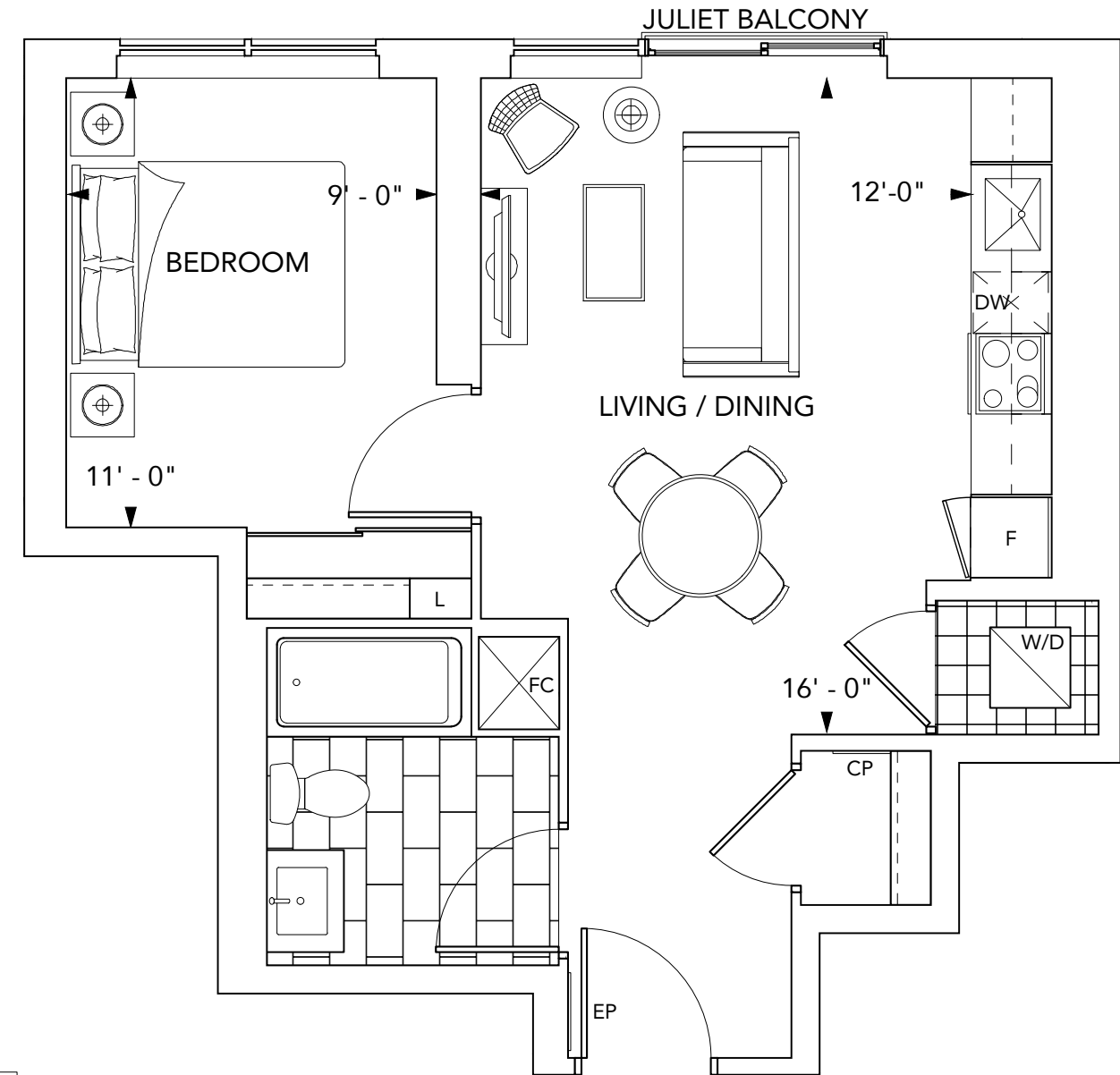


SUITE 1A 1 BEDROOM



Floors 4-35

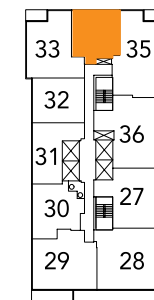
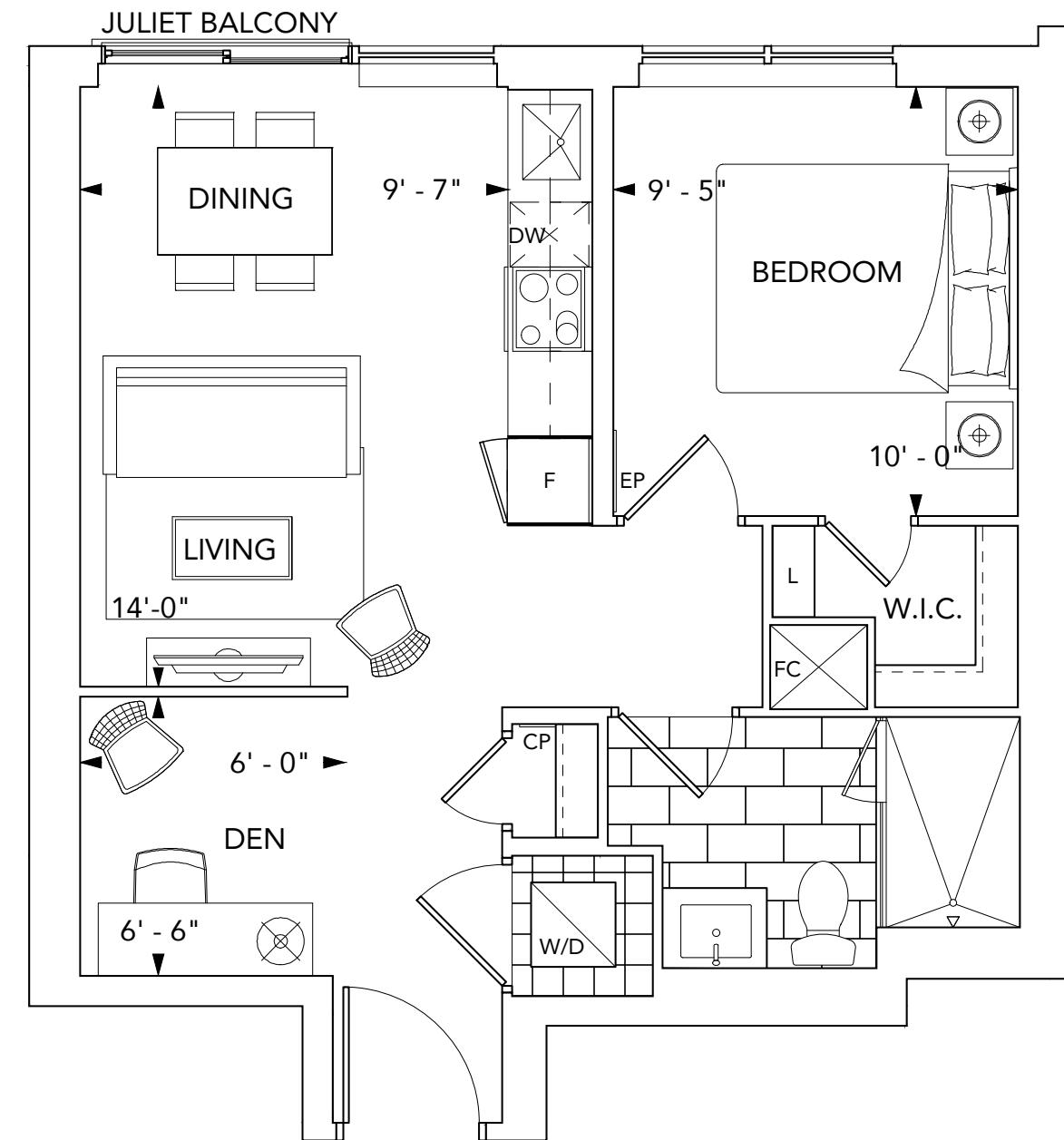
SUITE 1B 1 BEDROOM



Floors 4-35

SUITE 1D+D

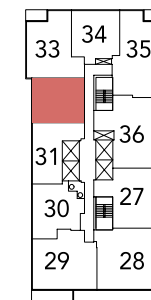
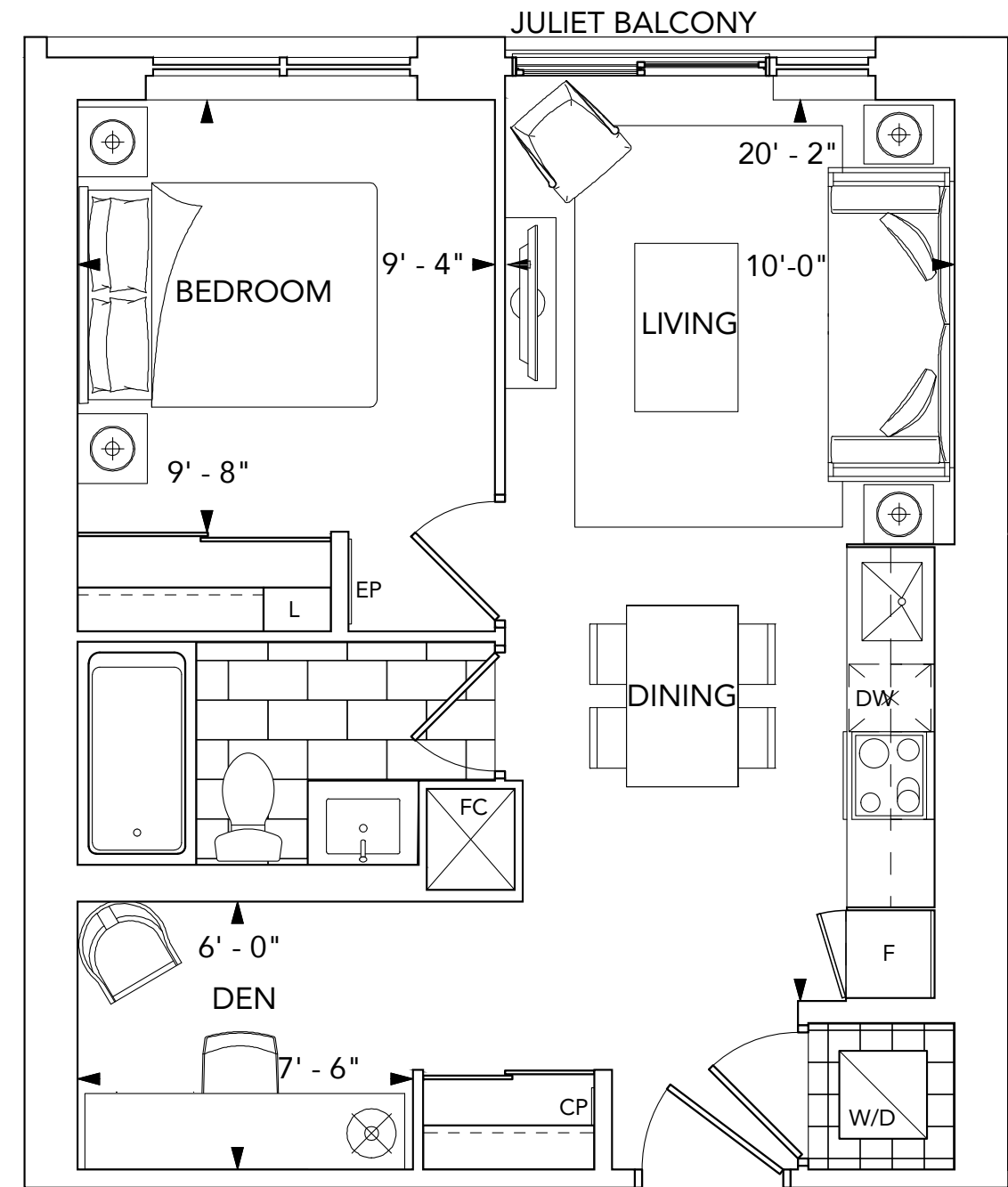
1 BEDROOM+DEN



Floors 4-35

SUITE 1C+D

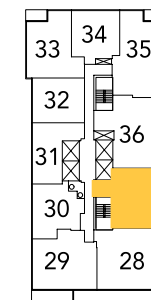
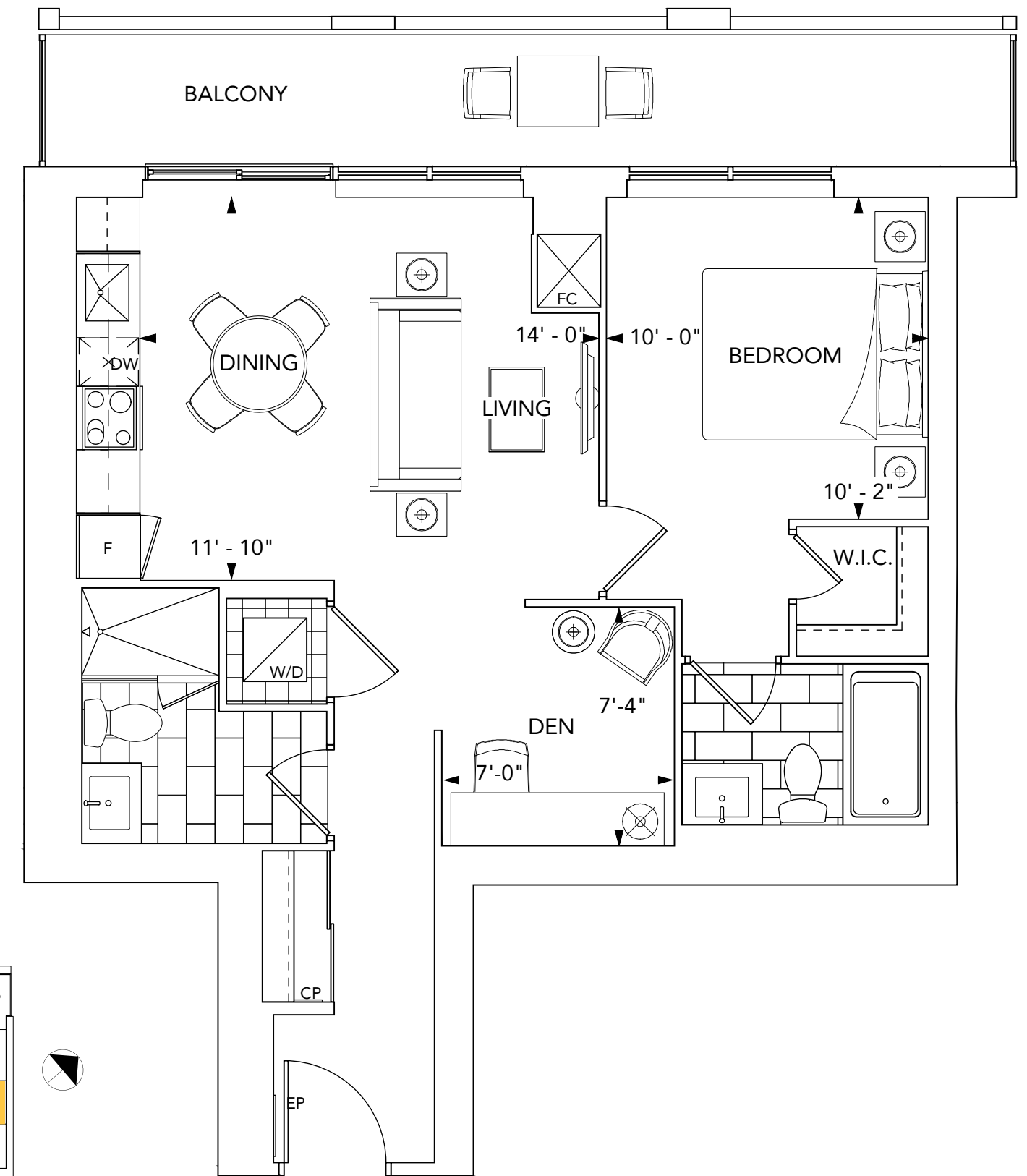
1 BEDROOM+DEN



Floors 4-35

SUITE 1E+D

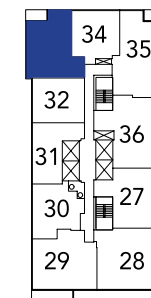
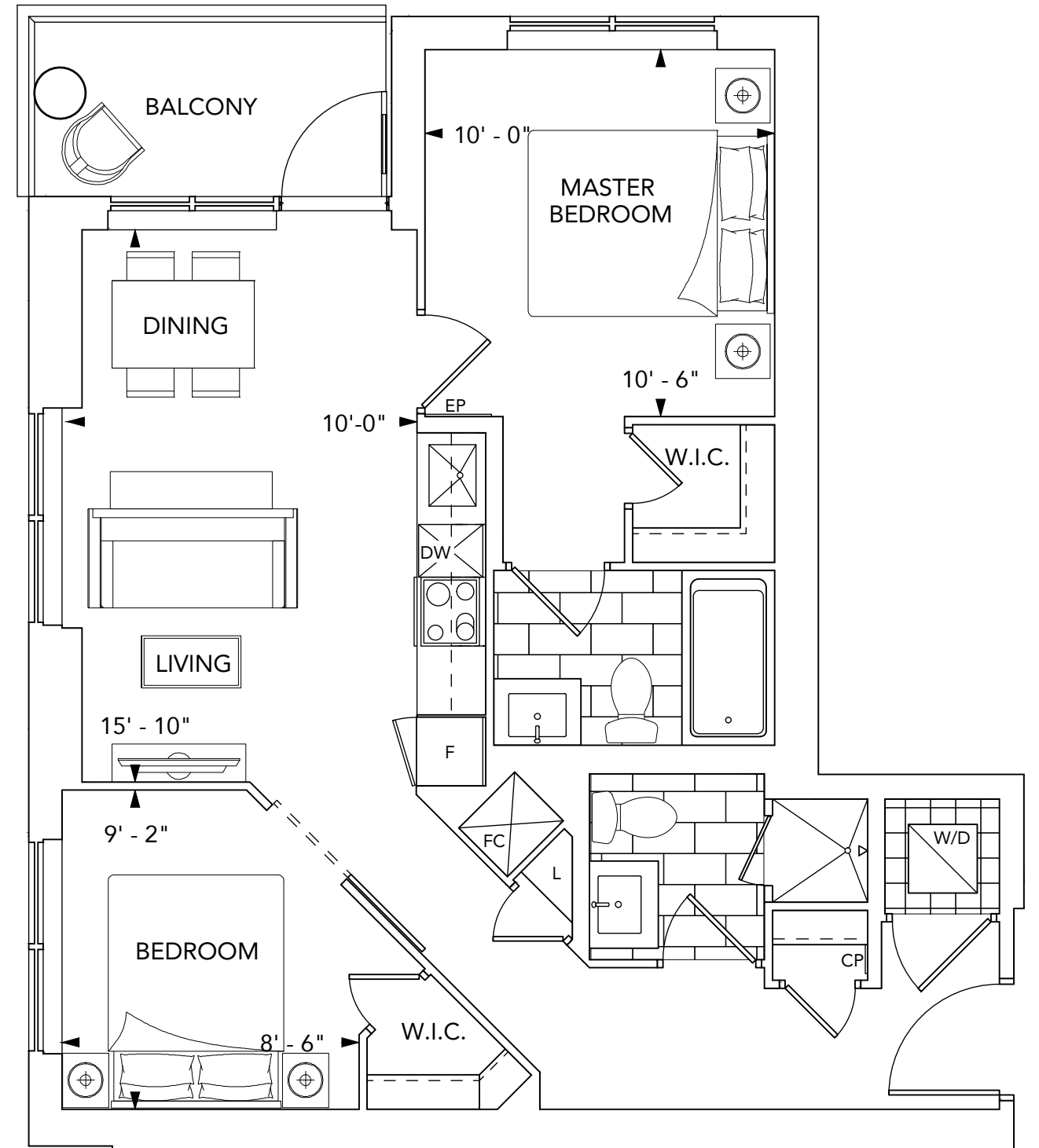
1 BEDROOM+DEN



Floors 4-35

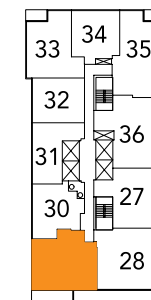
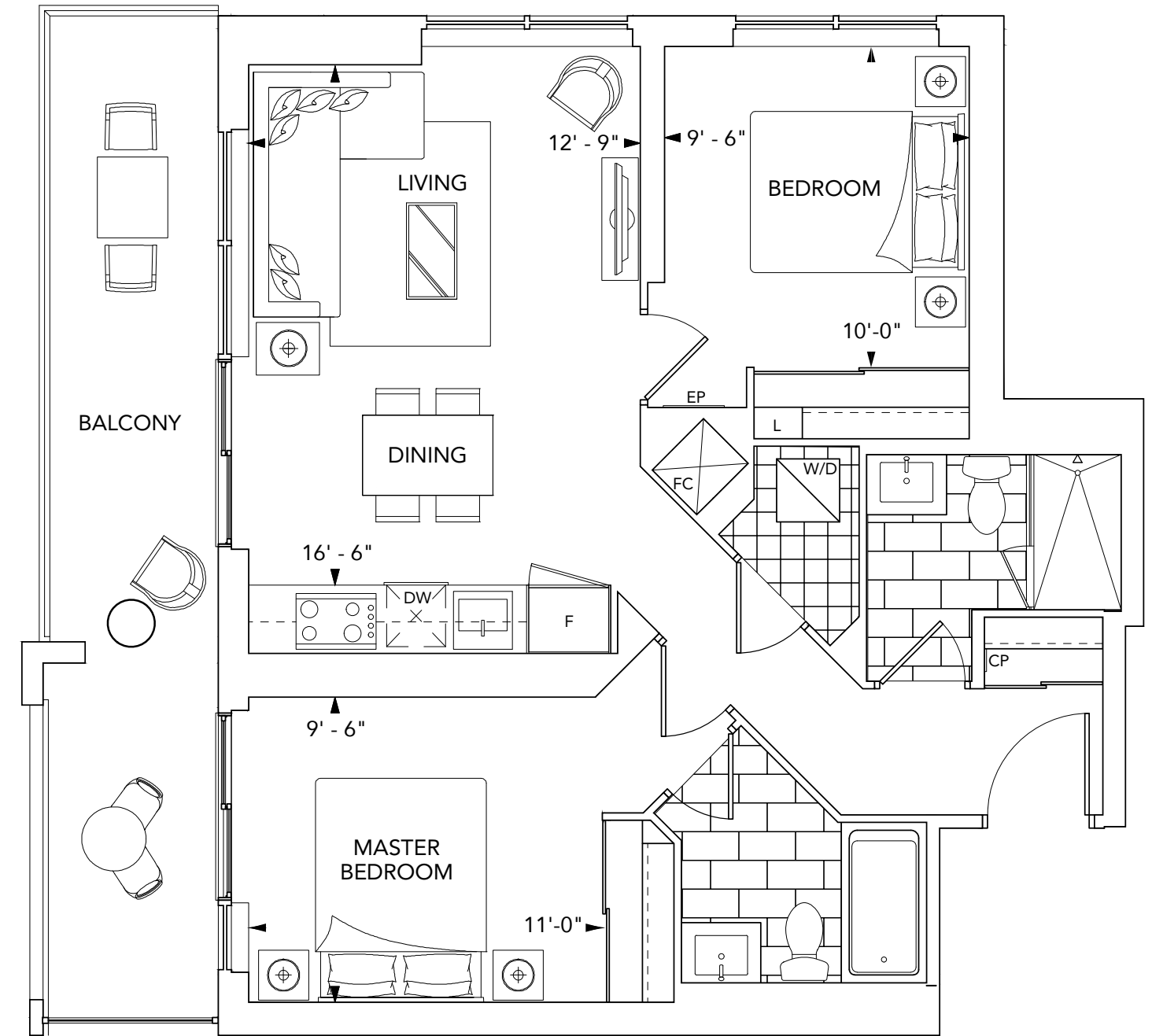
SUITE 2A

2 BEDROOM



Floors 4-35

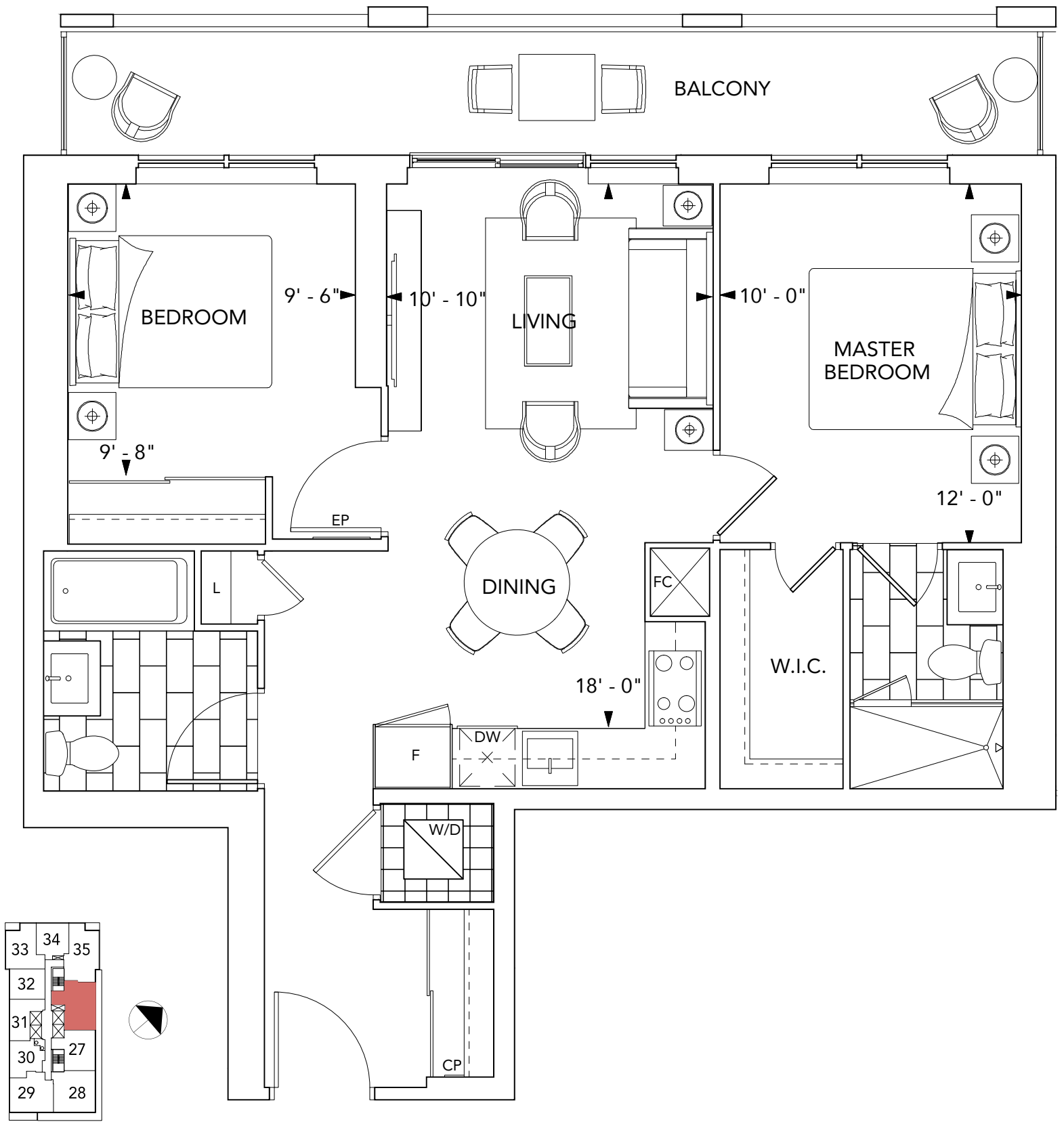
SUITE 2B 2 BEDROOM



Floors 4-35

SUITE 2C

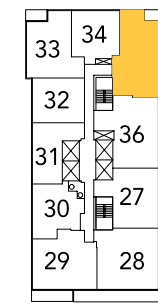
2 BEDROOM



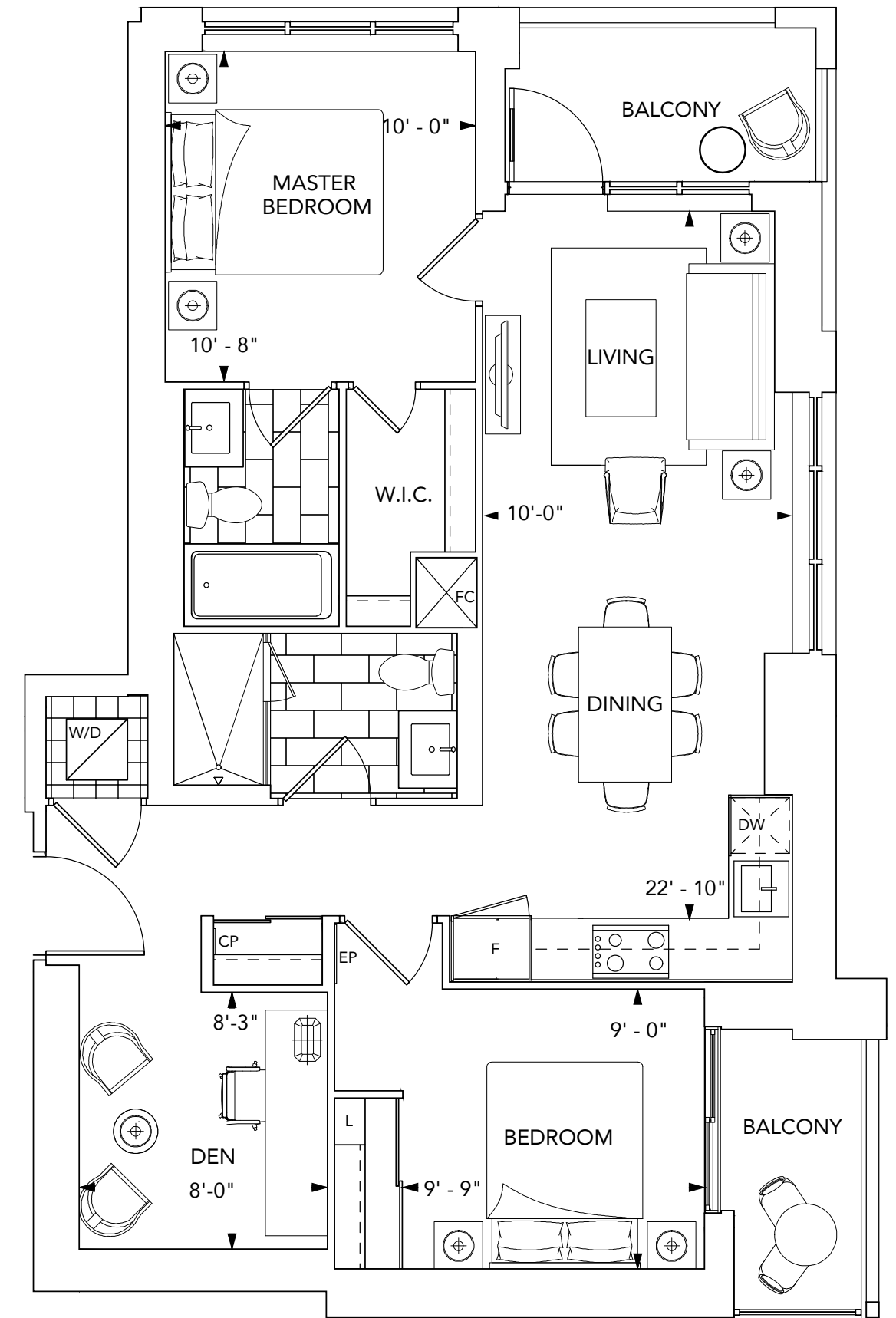
Floors 4-35

SUITE 2E+D

2 BEDROOM+DEN

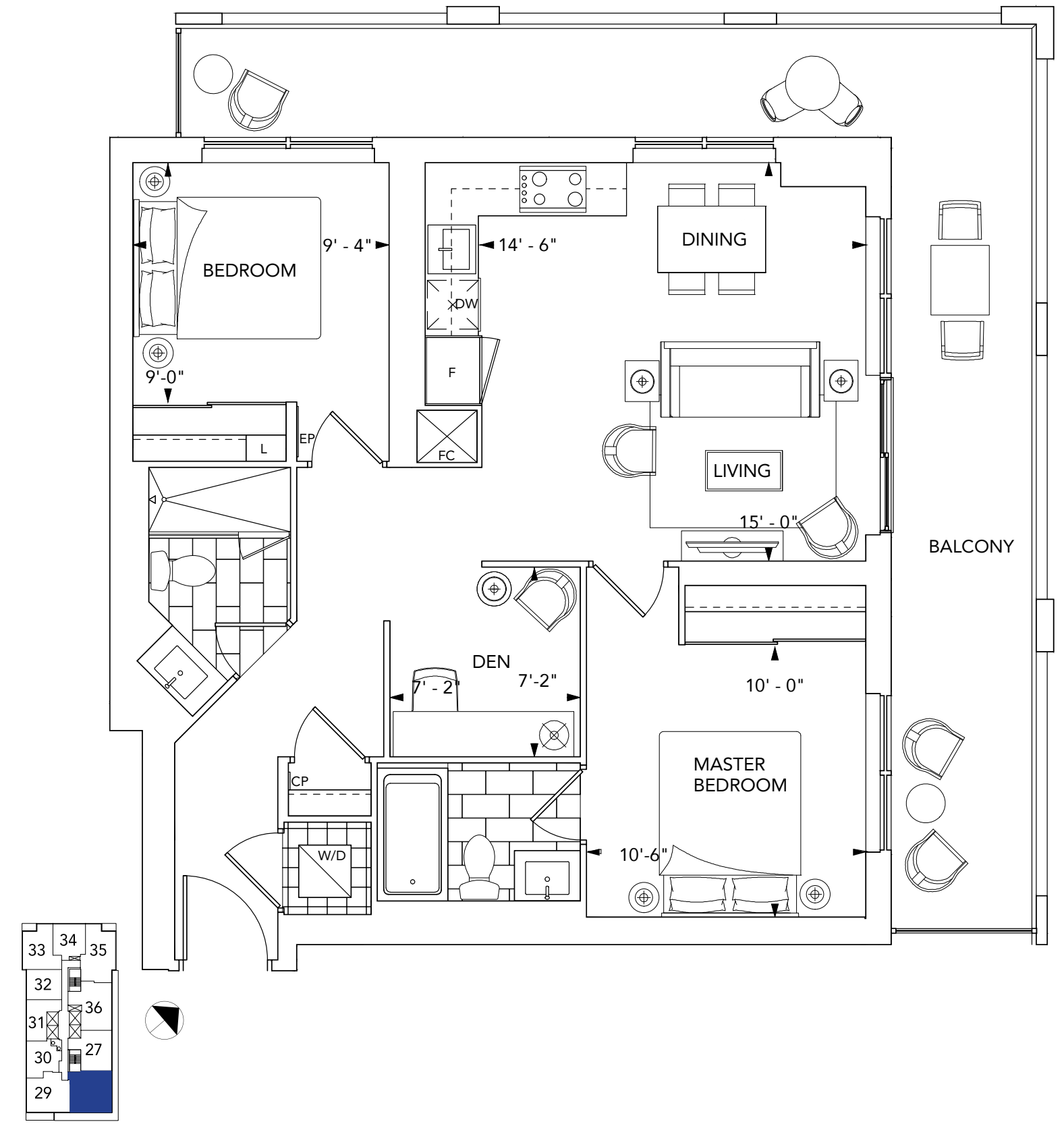


Floors 4-35



SUITE 2D+D

2 BEDROOM+DEN



Floors 4-35

FEATURES & FINISHES



GENERAL

- White smooth ceiling in all areas except the laundry/storage* rooms and bathrooms (laundry/storage and bathroom ceilings are smooth and painted with white semi-gloss paint).
- Interior walls are primed and then painted with two coats of off-white, quality latex paint (bathrooms, and all woodwork and trim painted with durable white semi-gloss paint). Paints have low levels of volatile organic compounds (VOC's).
- Contemporary style 6'8" interior doors (paint finish) with brushed metal hardware for 8' and 9' ceilings.
- 5" square edge paint finish baseboards in all areas except bathroom, laundry and storage areas.
- Cultured white marble window sills, on all windows*.
- Mirrored sliding closet doors*.
- Thermally broken aluminum windows with double pane, sealed glazing units and operable awning windows for added thermal comfort.
- White bathroom fixtures throughout.
- The ceiling height of the unit will be approximately 8' for suites located on the 3rd to 9th, 11th to 19th floors and 21st to 29th.
- The ceiling height of the unit will be approximately 9' for suites located on the 2nd, 10th, 20th and 30th to 35th floors.

FLOOR COVERINGS

- Premium plank laminate floating floor with acoustic underlay in foyer*, hallway(s)*, den*, living and dining area*, bedroom(s)* and kitchen.
- Porcelain floor tile in bathrooms and storage* areas.
- White porcelain floor tile in laundry.

KITCHENS

- Contemporary cabinetry with single square edge granite or quartz counter top.
- Stainless steel undermount sink.
- Low flow chrome, single lever pull down kitchen faucet.
- 1 bedroom and 1 bedroom plus den suites and 2A suites will feature:
 - Energy Star high efficiency, time-delay built-in 18" dishwasher in stainless steel finish.
 - Energy Star 24" counter depth refrigerator with bottom mount freezer in stainless steel finish.
 - 24" microwave hood fan combo in Stainless Steel.
 - 24" electric ceramic cook-top.
 - Built-in 24" electric convection oven.

- 2 bedroom (with the exception of 2A suites) and 2 bedroom plus den suites will feature:
 - Energy Star high efficiency, time-delay built-in 24" dishwasher in stainless steel finish.
 - Energy Star 30" counter depth refrigerator with bottom mount freezer in stainless steel finish.
 - 30" microwave hood fan combo in stainless steel.
 - 30" electric ceramic cook-top.
 - Built-in 30" electric convection oven.
- Granite or quartz slab backsplash.

BATHROOMS

- Contemporary cabinetry with white cultured marble vanity top with rectangular basin.
- Vanity mirror with integrated lighting.
- Deep soaker bathtub*.
- Low flow, single lever sink faucets
- Low flow, high pressure showerhead(s).

LAUNDRY

- Heavy-duty wiring and receptacle for dryer.
- Stacked front loading dryer and Energy Star, high efficiency, front loading washer (complete with stainless steel flexible hoses). Stacked laundry appliances are white in colour.

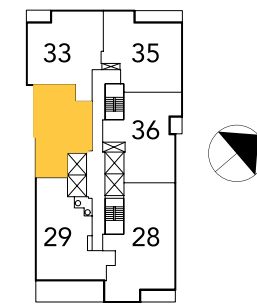
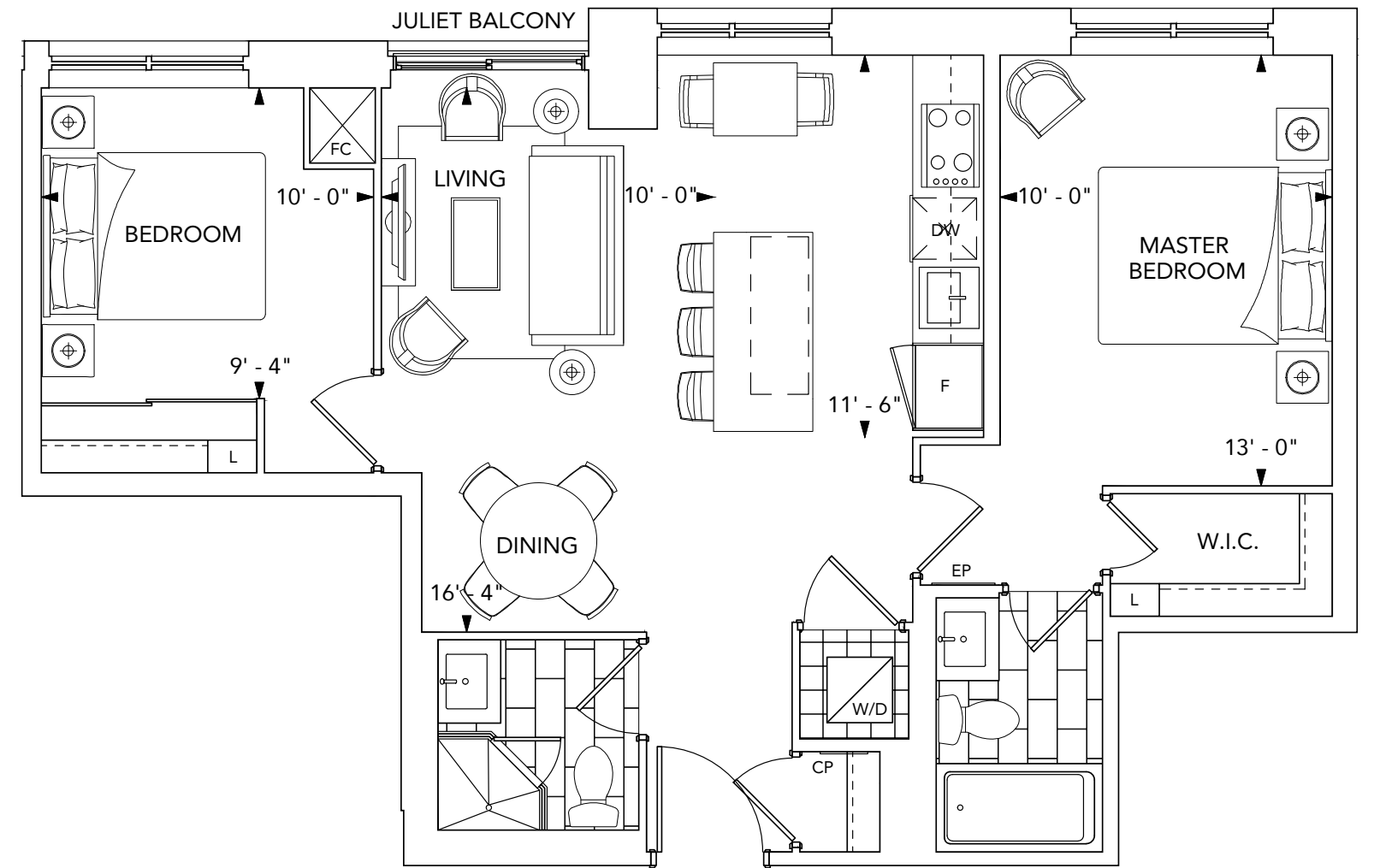
* - denotes availability determined by suite design.

All dimensions are approximate and subject to normal construction variances. Dimensions may exceed the useable floor area. Sizes and specifications subject to change without notice. Furniture is displayed for illustration purposes only and does not necessarily reflect the electrical plan for the suite. Suites are sold unfurnished. E.&O.E. ©Tridel 2017. ©Tridel, "D" design, Tridel Built for Life, Tridel Built for Life Design, and Built Green. Built for Life are registered Trademarks of Tridel Corporation. Project names and logos are Trademarks of their respective owners. All rights reserved. E.&O.E. April 2017.

SIGNATURE SUITES

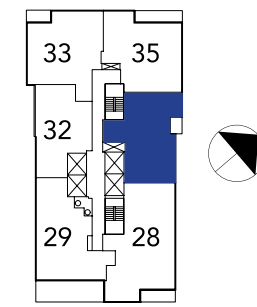
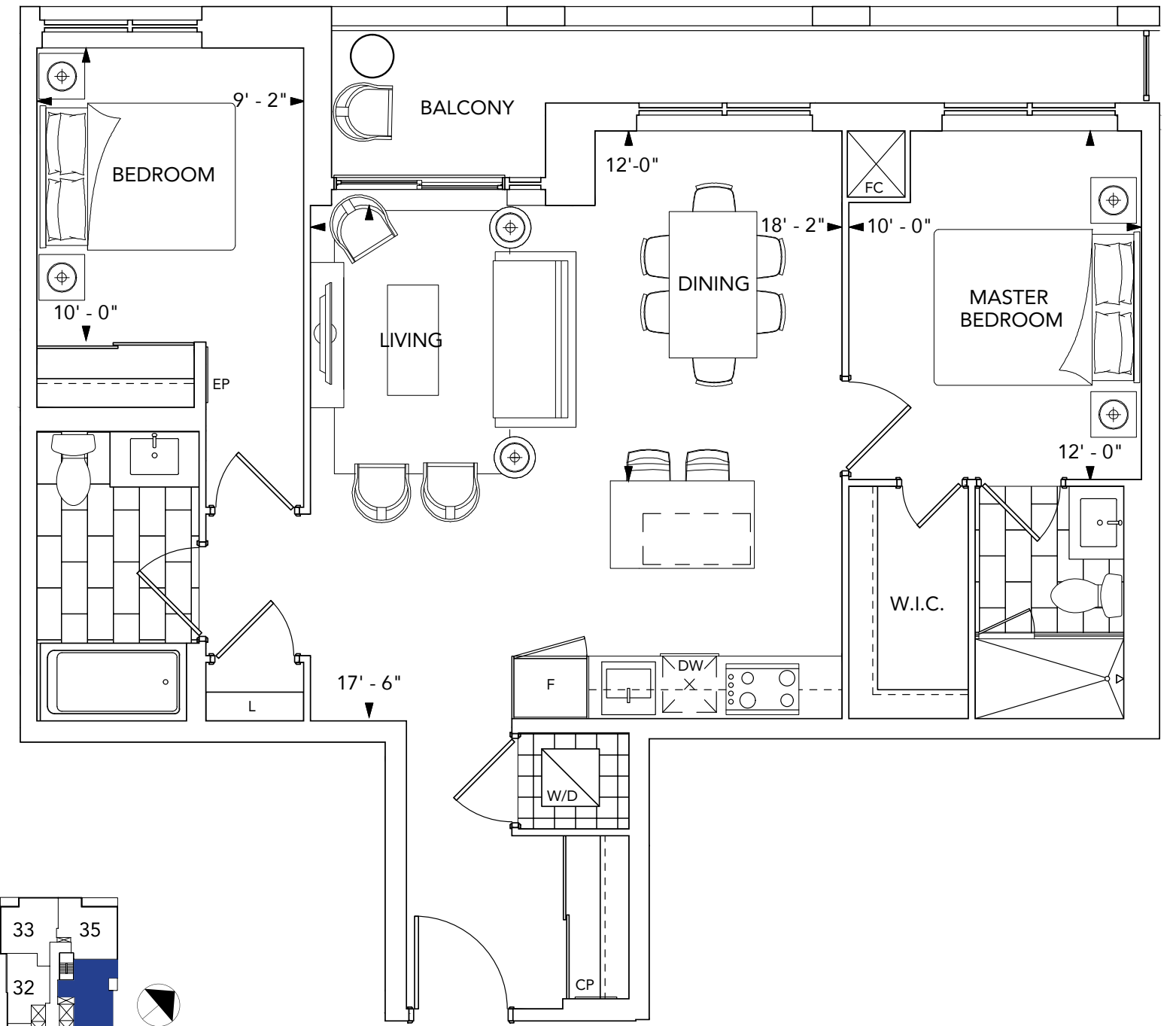


SUITE 2F 2 BEDROOM



Floors 36-PH

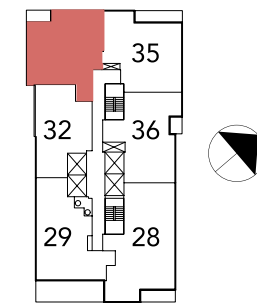
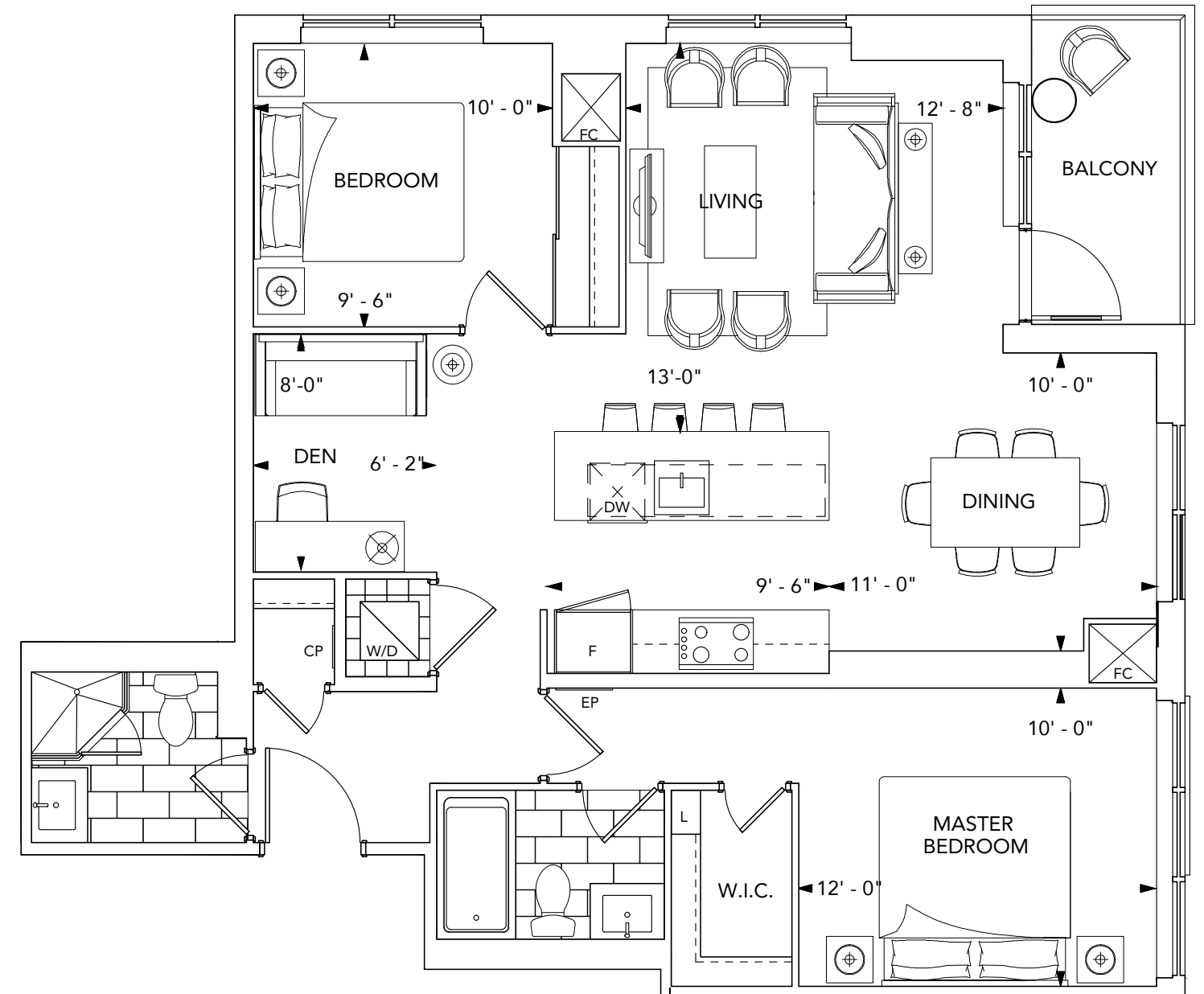
SUITE 2G 2 BEDROOM



Floors 36-PH

SUITE 2J+D

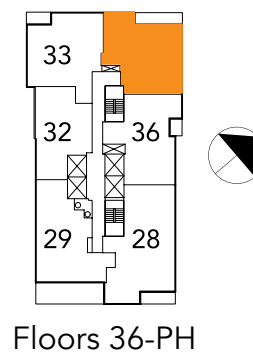
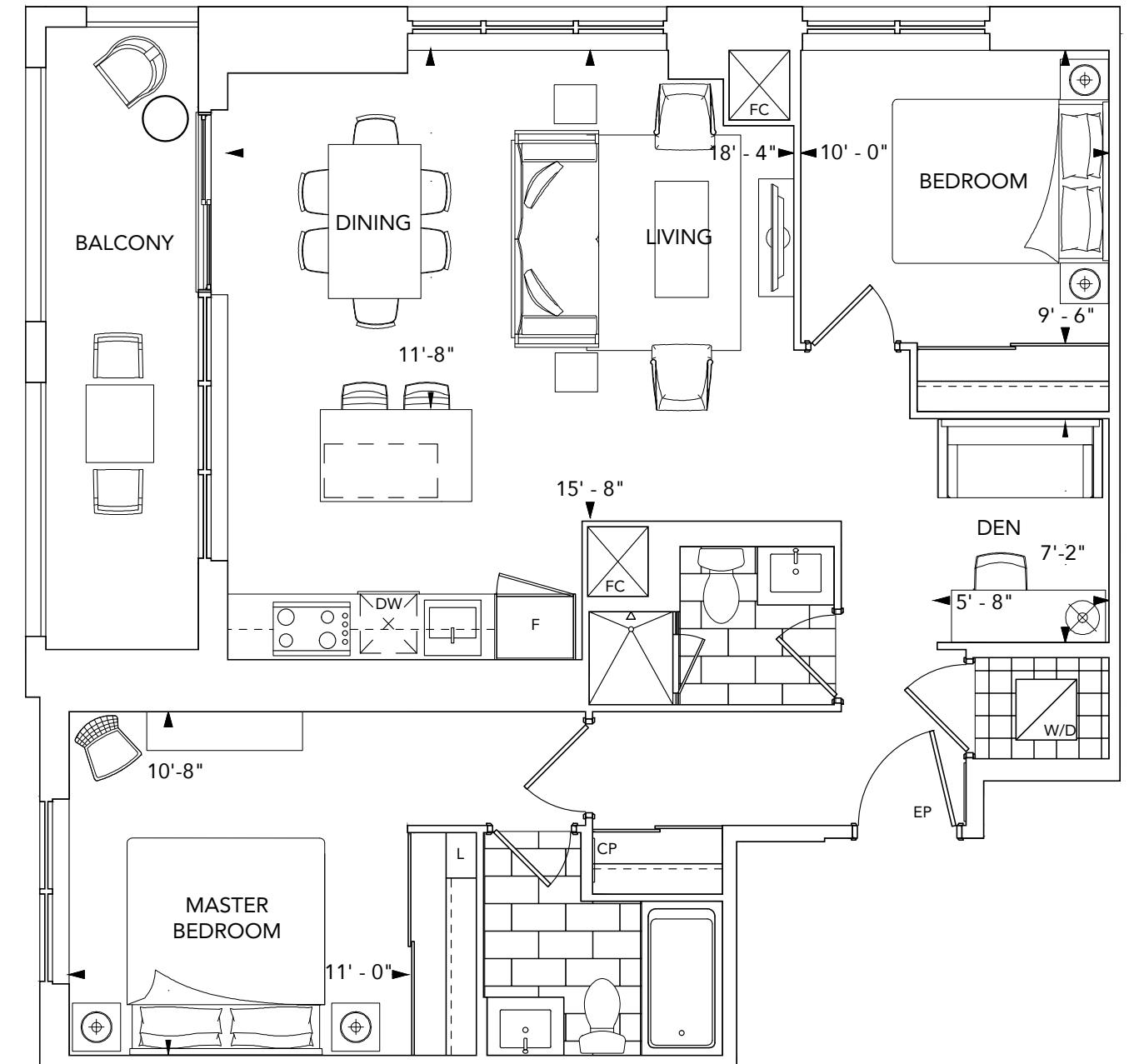
2 BEDROOM+DEN



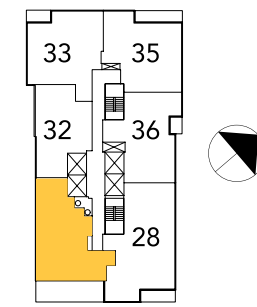
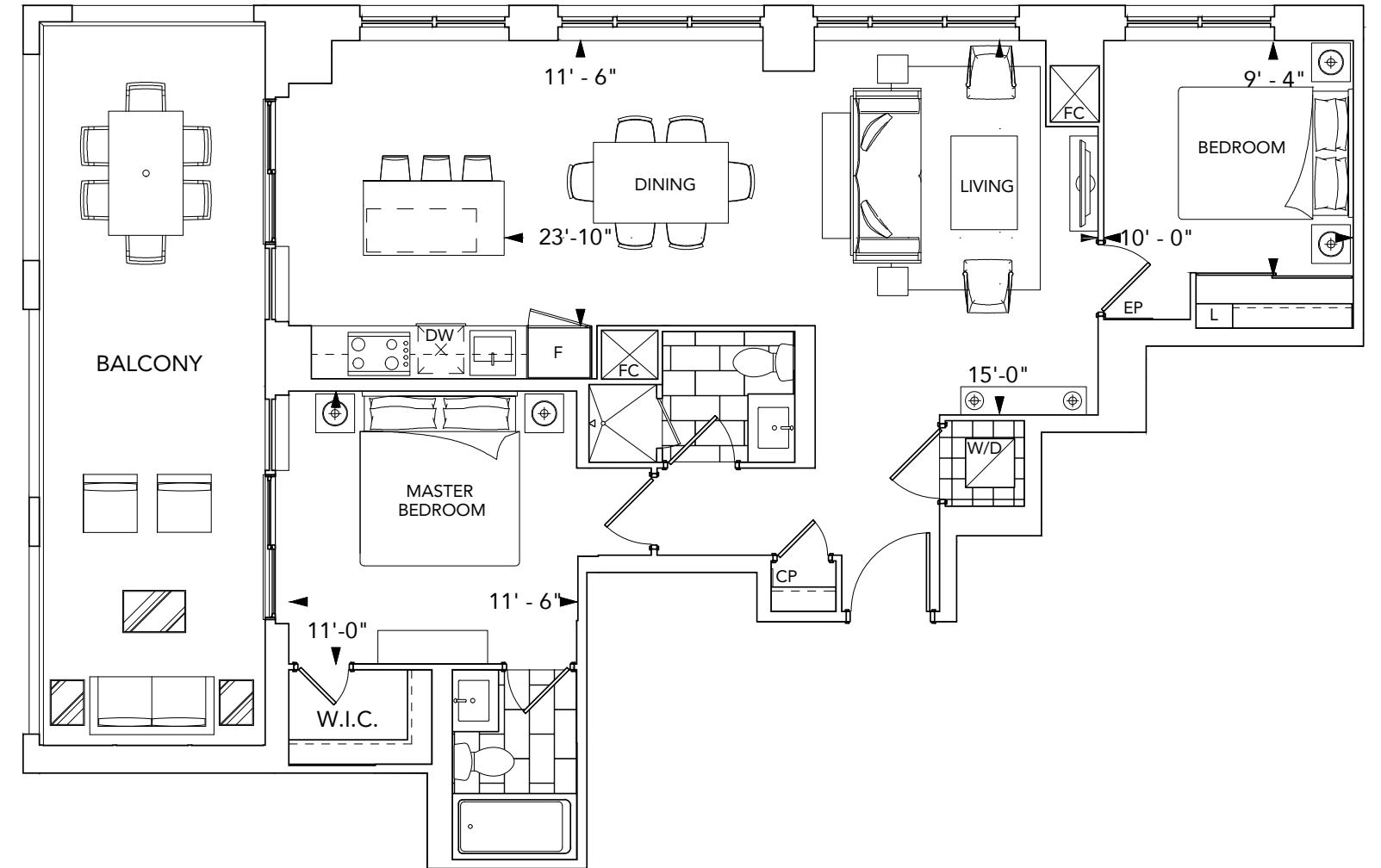
Floors 36-PH

SUITE 2H+D

2 BEDROOM+DEN



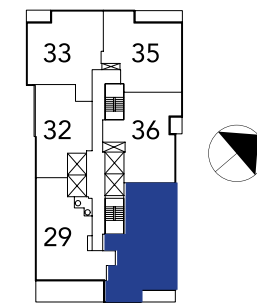
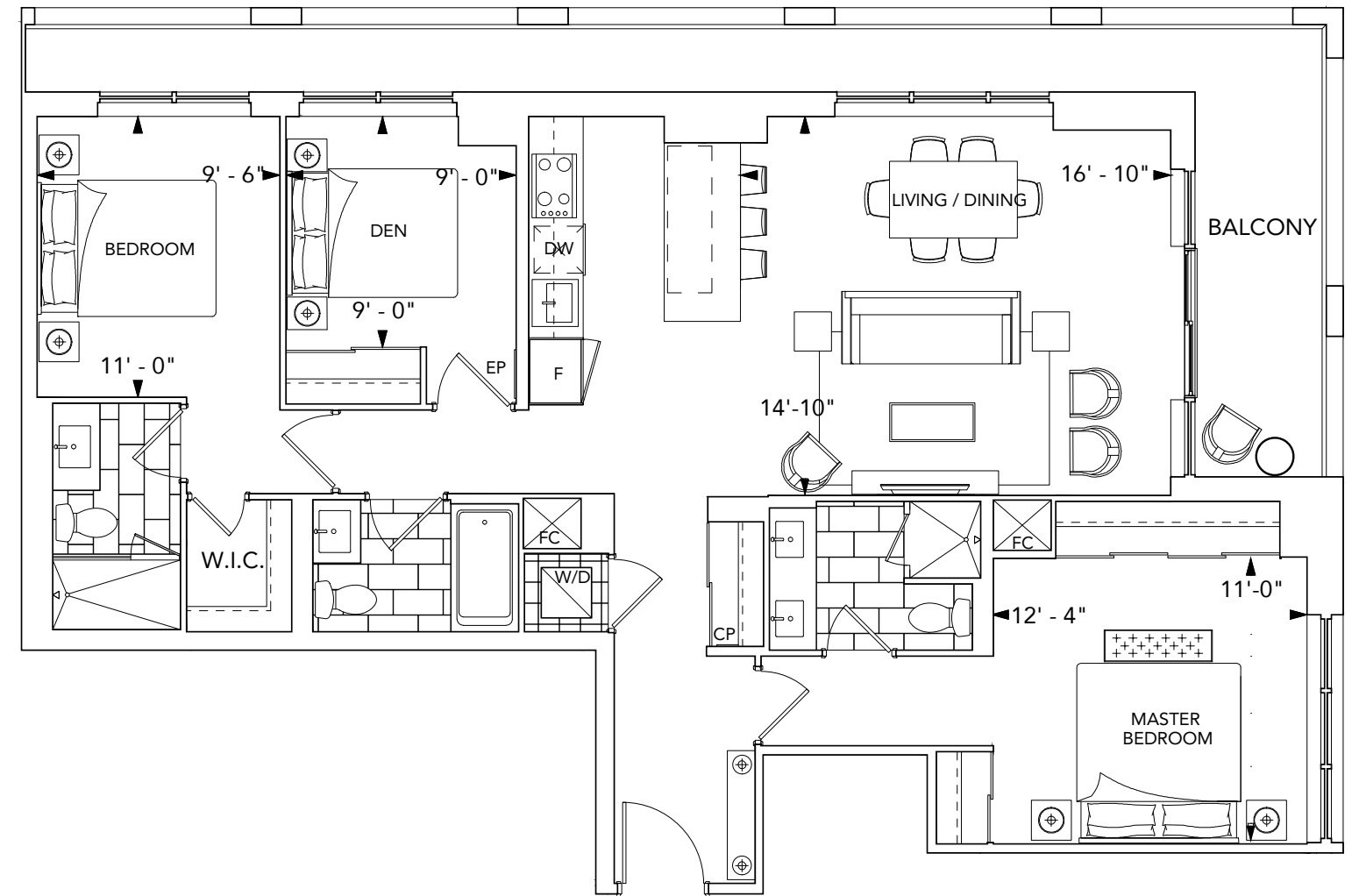
SUITE 2K 2 BEDROOM



Floors 36-PH

SUITE 2L+D

2 BEDROOM+DEN



Floors 36-PH

FEATURES & FINISHES



GENERAL

- White smooth ceiling in all areas except the laundry/storage* rooms and bathrooms (laundry/storage and bathroom ceilings are smooth and painted with white semi-gloss paint).
- Interior walls are primed and then painted with two coats of off-white, quality latex paint (bathrooms, and all woodwork and trim painted with durable white semi-gloss paint). Paints have low levels of volatile organic compounds (VOC's).
- Contemporary style 6'8" interior doors (paint finish) with brushed metal hardware for 8' and 9' ceilings.
- Contemporary style 8' interior doors (paint finish) with brushed metal hardware for 10' ceilings.
- 5" square edge paint finish baseboards in all areas except bathroom, laundry and storage areas.
- Cultured white marble window sills, on all windows*.
- Frameless mirrored sliding closet doors*.
- Thermally broken aluminum windows with double pane, sealed glazing units and operable awning windows for added thermal comfort.
- White bathroom fixtures throughout.
- The ceiling height of the unit will be approximately 9' for suites located on the 36th to 43rd floors, the ceiling height of the unit will be approximately 10' for suites located on the penthouse floor.

FLOOR COVERINGS

- Premium plank laminate floating floor with acoustic underlay in foyer*, hallway(s)*, den*, living and dining area*, bedroom(s)* and kitchen.
- Porcelain floor tile in bathrooms and storage* areas.
- White porcelain floor tile in laundry.

KITCHENS

- Contemporary cabinetry with single square edge granite or quartz counter top.
- Stainless-steel undermount sink.
- Low flow chrome, single lever pull down kitchen faucet.
- Energy Star high efficiency, time-delay built-in 24" dishwasher in stainless steel finish.
- Energy Star counter depth 30" refrigerator with bottom mount freezer in stainless steel finish.
- 30" microwave hood fan combo in Stainless Steel.
- 30" electric ceramic cook-top.
- Built-in 30" electric convection oven.
- Granite or quartz slab backsplash.

BATHROOMS

- Contemporary cabinetry with white cultured marble vanity top with rectangular basin.
- Vanity mirror with integrated lighting.
- Deep soaker bathtub*.
- Low flow, single lever sink faucets.
- Low flow, high pressure showerhead(s).

LAUNDRY

- Heavy-duty wiring and receptacle for dryer.
- Stacked front loading dryer and Energy Star, high efficiency, front loading washer (complete with stainless steel flexible hoses). Stacked laundry appliances are white in colour.

* - denotes availability determined by suite design.

All dimensions are approximate and subject to normal construction variances. Dimensions may exceed the useable floor area. Sizes and specifications subject to change without notice. Furniture is displayed for illustration purposes only and does not necessarily reflect the electrical plan for the suite. Suites are sold unfurnished. E.&O.E. ©Tridel 2017. @Tridel, "D" design, Tridel Built for Life, Tridel Built for Life Design, and Built Green. Built for Life are registered Trademarks of Tridel Corporation. Project names and logos are Trademarks of their respective owners. All rights reserved. E.&O.E. April 2017.