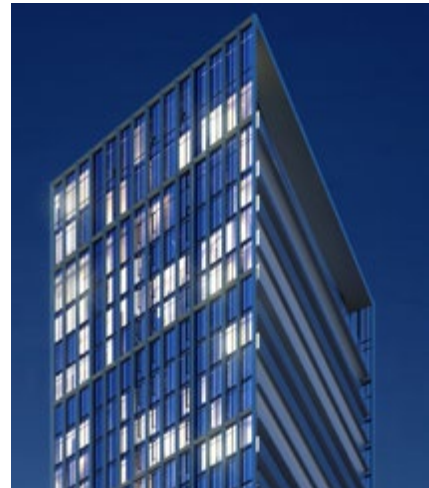




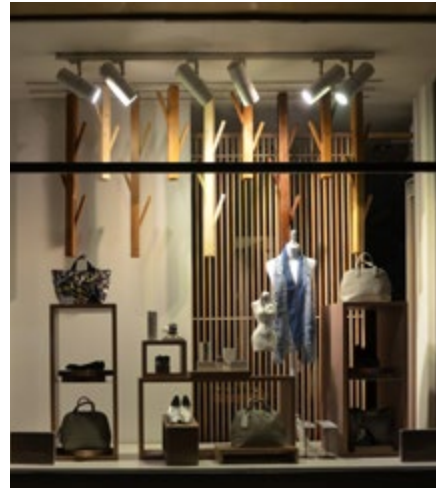
Toronto's Next Great Neighbourhood.





A Tale of Two Towers.

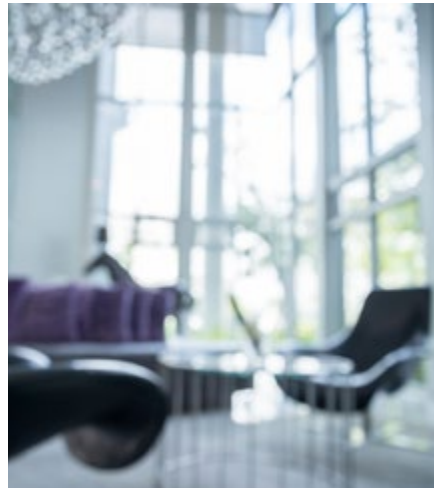




Unrivalled New Retail Promenade on Bloor.

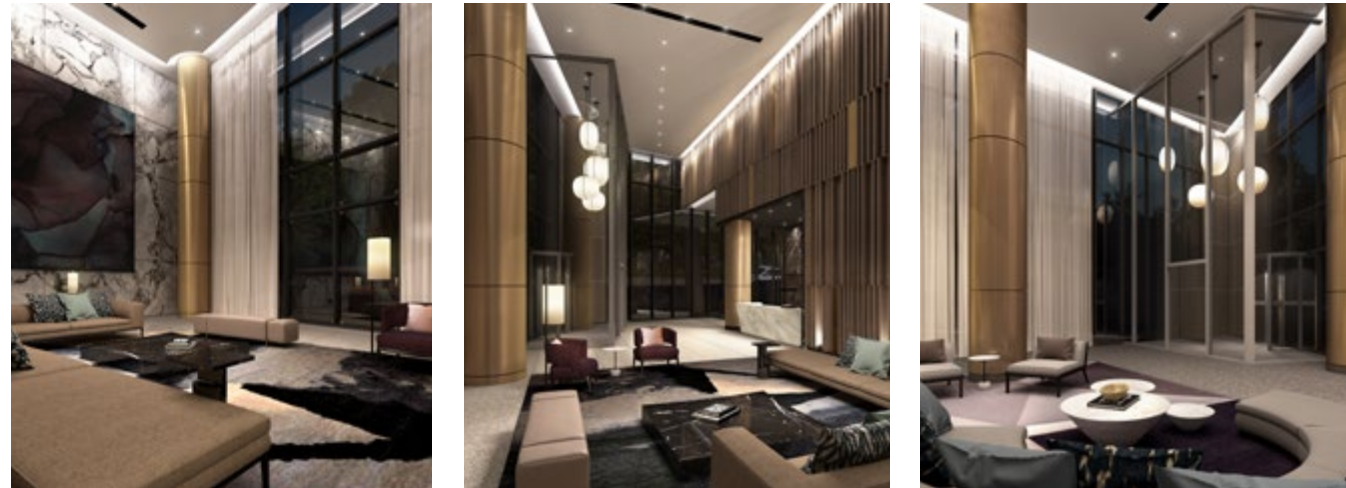


Luxury Storefronts • Via Bloor



Make an Entrance.

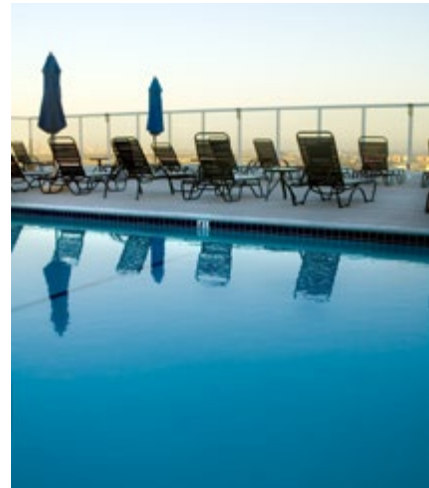




Stay a While.



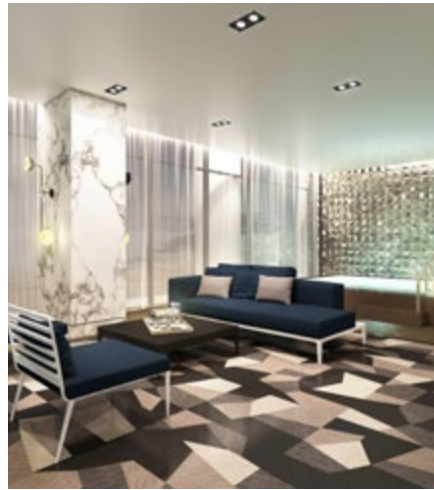
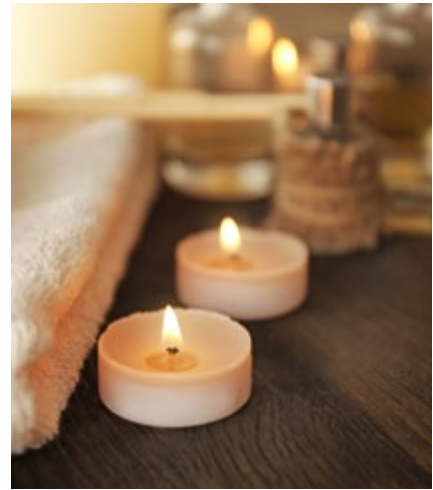
West Lobby • Via Bloor



Rooftop Temptations.



The Via Bloor Outdoor Amenity Space on 5th Floor will not be complete or available for use at the time of Tower 1 occupancy. These amenities will be provided upon the completion of future phases of the development. Specifications are subject to change without notice. E. & O.E. January 2017.



A Rejuvenating Dip.





Mind Over Muscle.

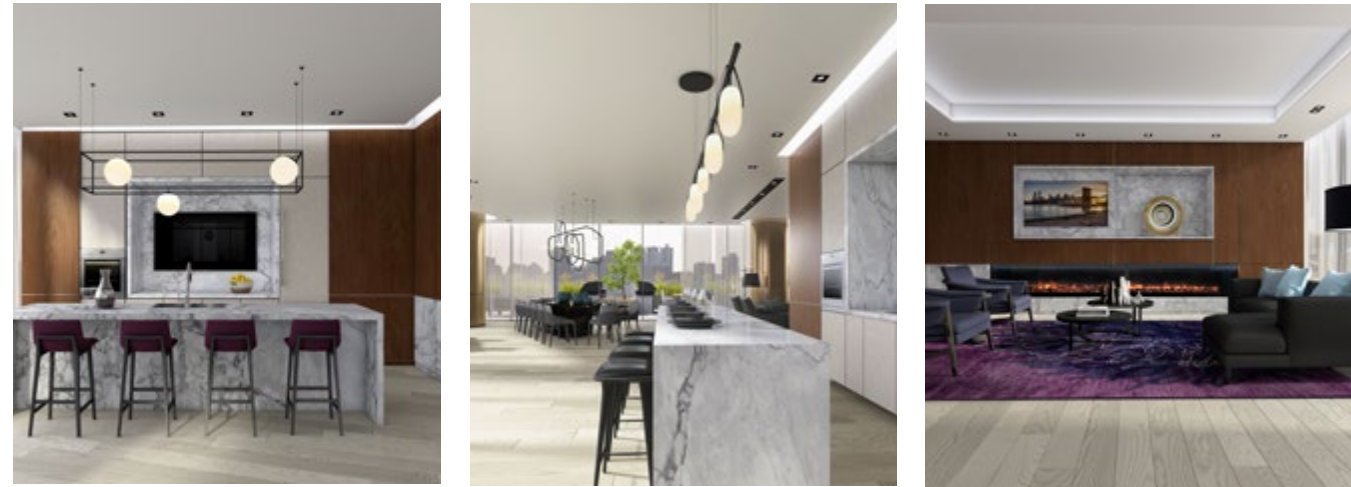




Lights. Camera. Action.



Theatre Room • Via Bloor

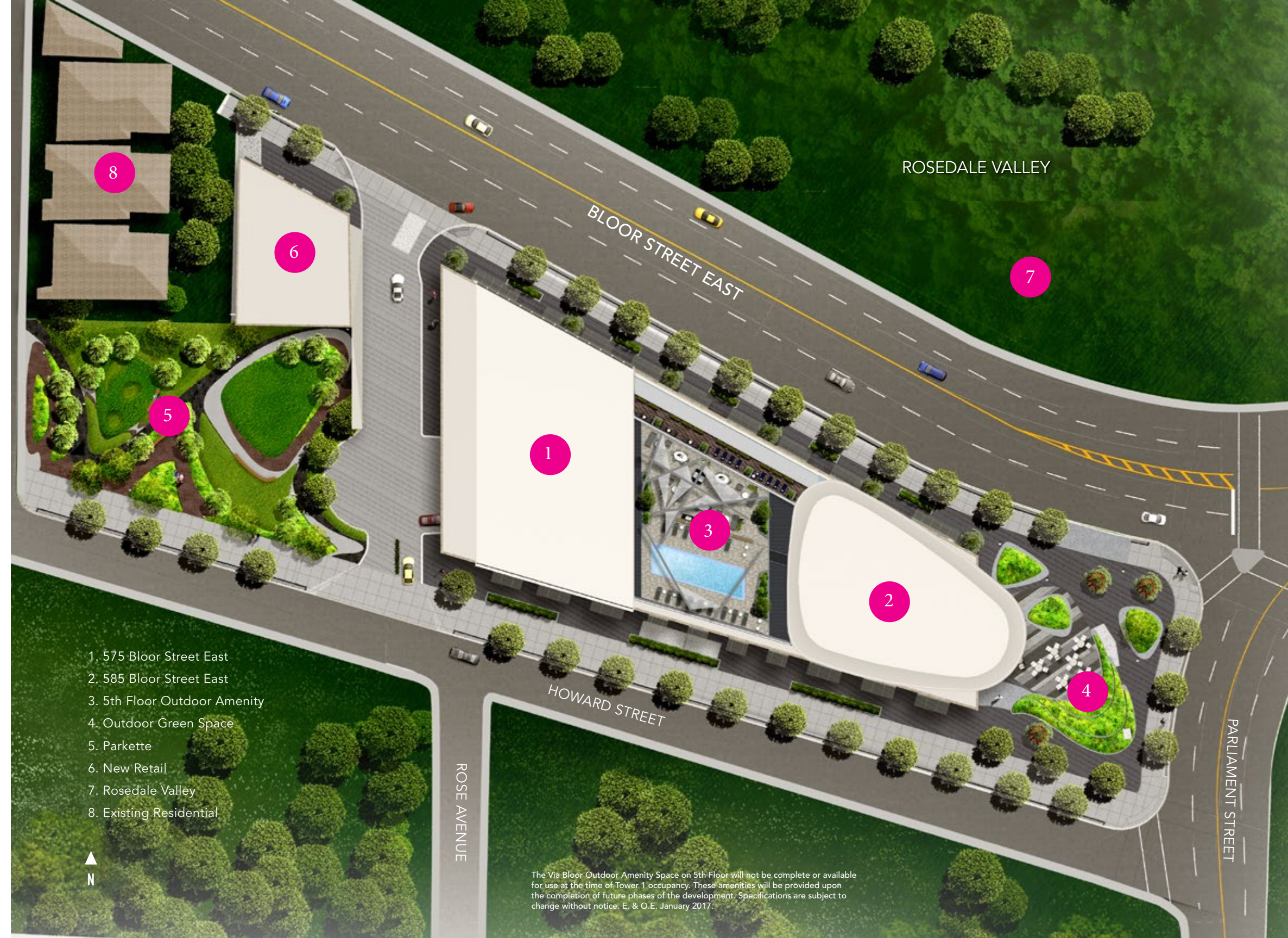


Your Social Network.





Site Plan

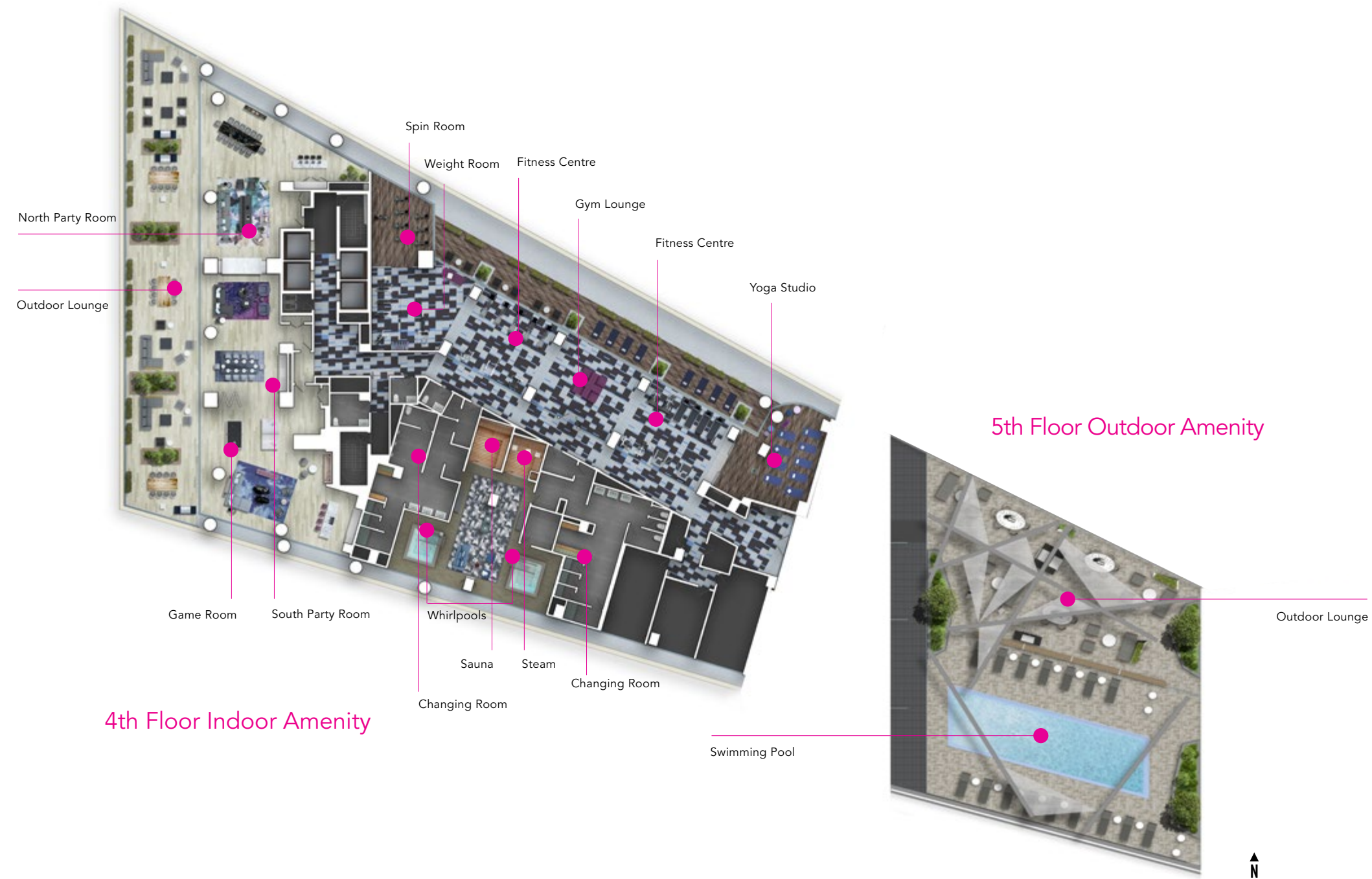


- 1. 575 Bloor Street East
- 2. 585 Bloor Street East
- 3. 5th Floor Outdoor Amenity
- 4. Outdoor Green Space
- 5. Parkette
- 6. New Retail
- 7. Rosedale Valley
- 8. Existing Residential

The Via Bloor Outdoor Amenity Space on 5th Floor will not be complete or available for use at the time of Tower 1 occupancy. These amenities will be provided upon the completion of future phases of the development. Specifications are subject to change without notice. E. & O.E. January 2017.



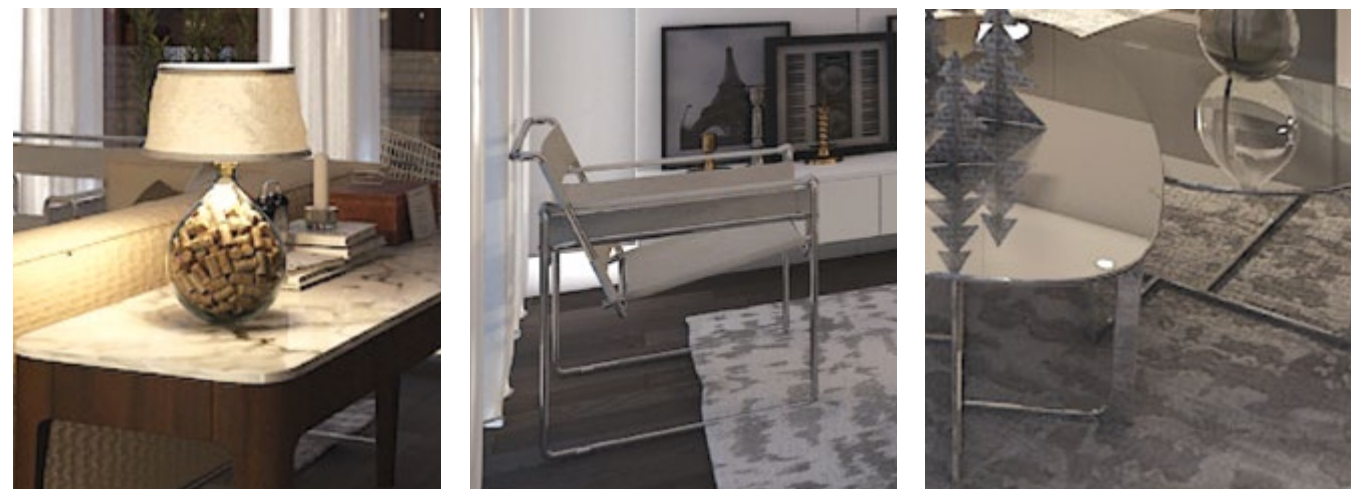
Amenity Plan



The following Via Bloor amenities spaces will not be complete or available for use at the time of Phase 1 occupancy: Fitness Centre, Spin Room, Weight Room, Gym Lounge, Yoga Studio, Whirlpool, Steam, Sauna, Men's Change Room, Women's Change Room and Outdoor Amenity Space on 5th Floor. These amenities will be provided upon the completion of future phases of the development. Specifications are subject to change without notice. E. & O.E. January 2017.

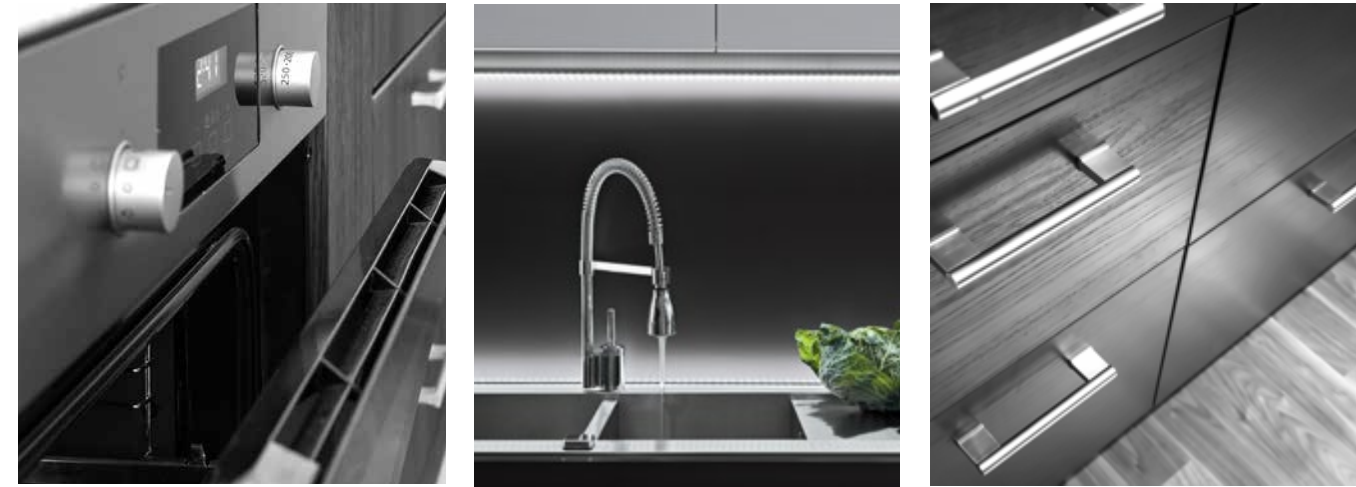
Interiors





Sitting Pretty.





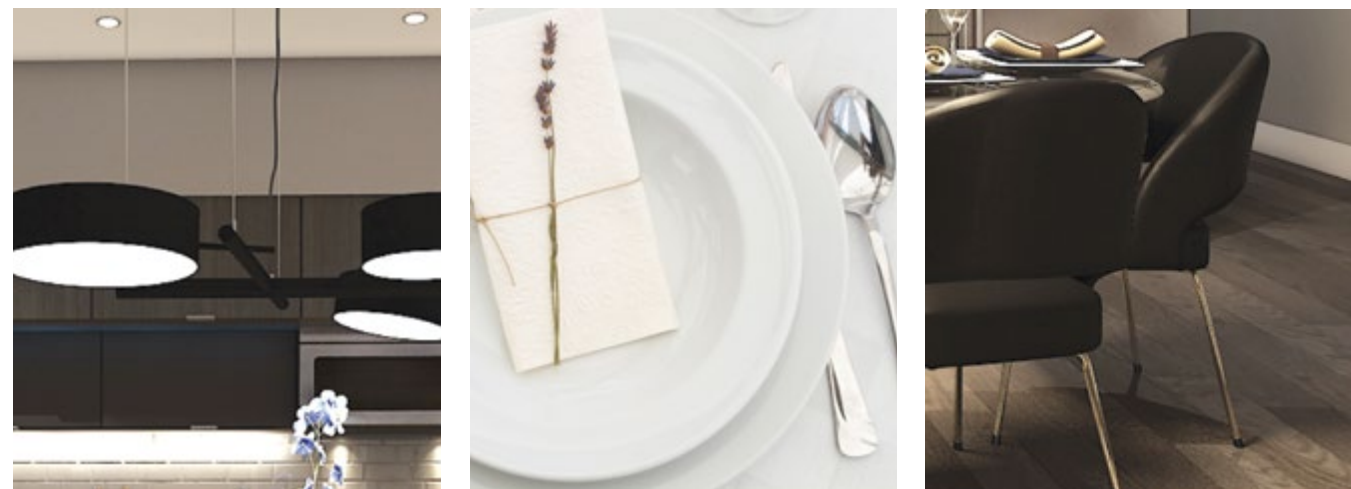
A Taste of Things to Come.





Personal Space.





Indulgence is Served.

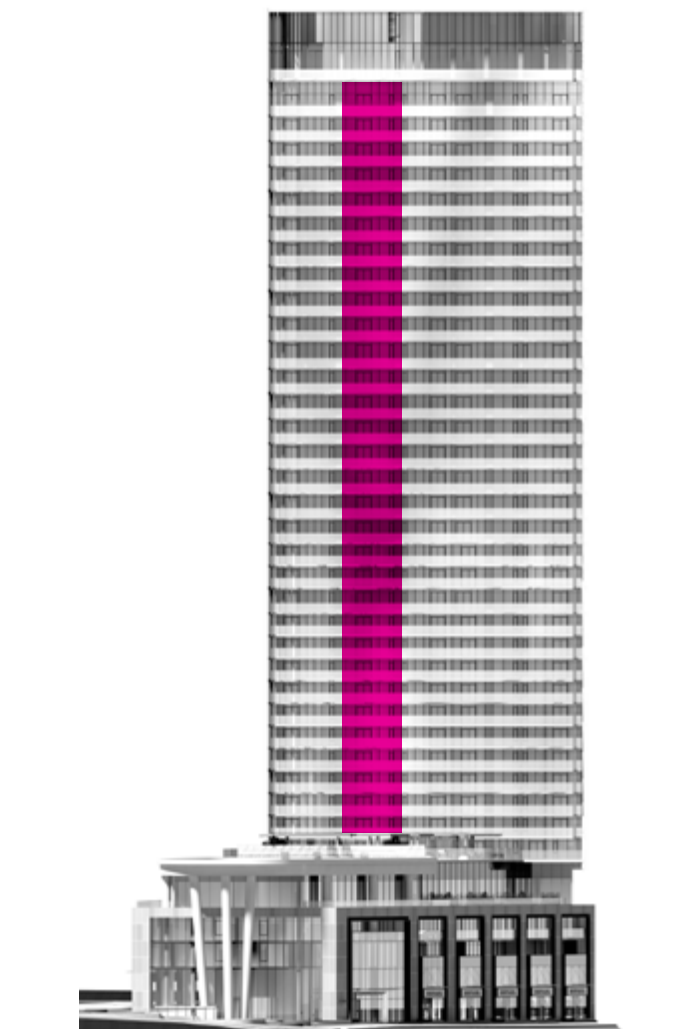




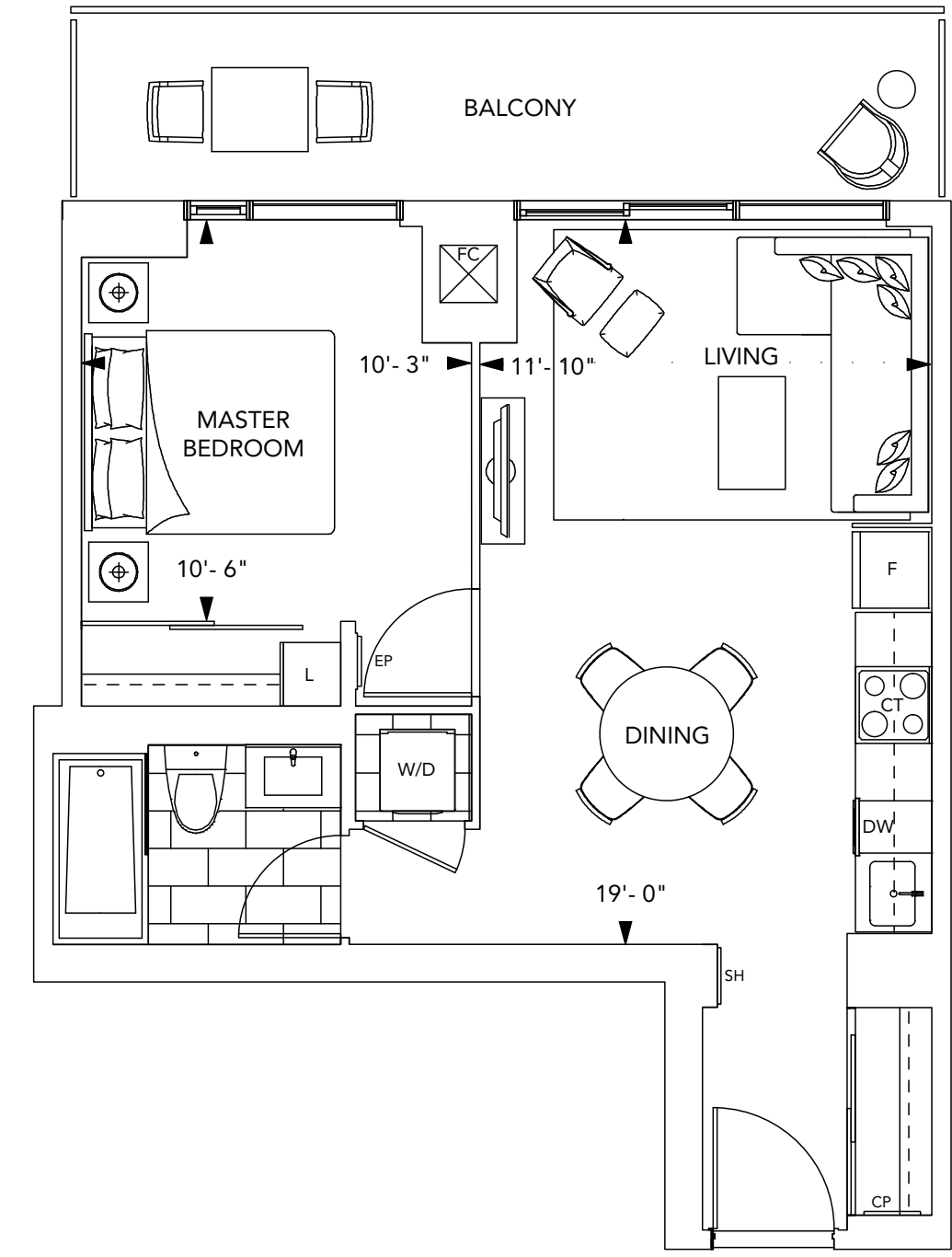
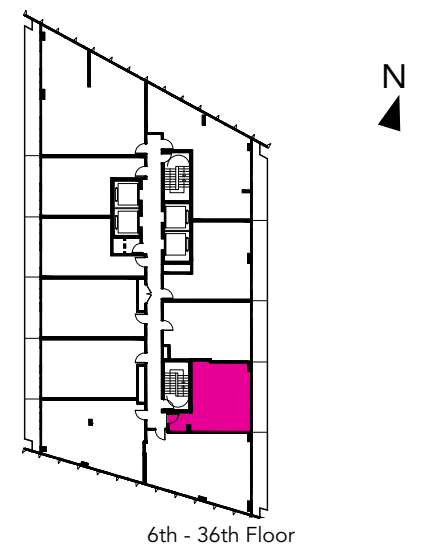
The Plans



Suite 1A
1 Bedroom •

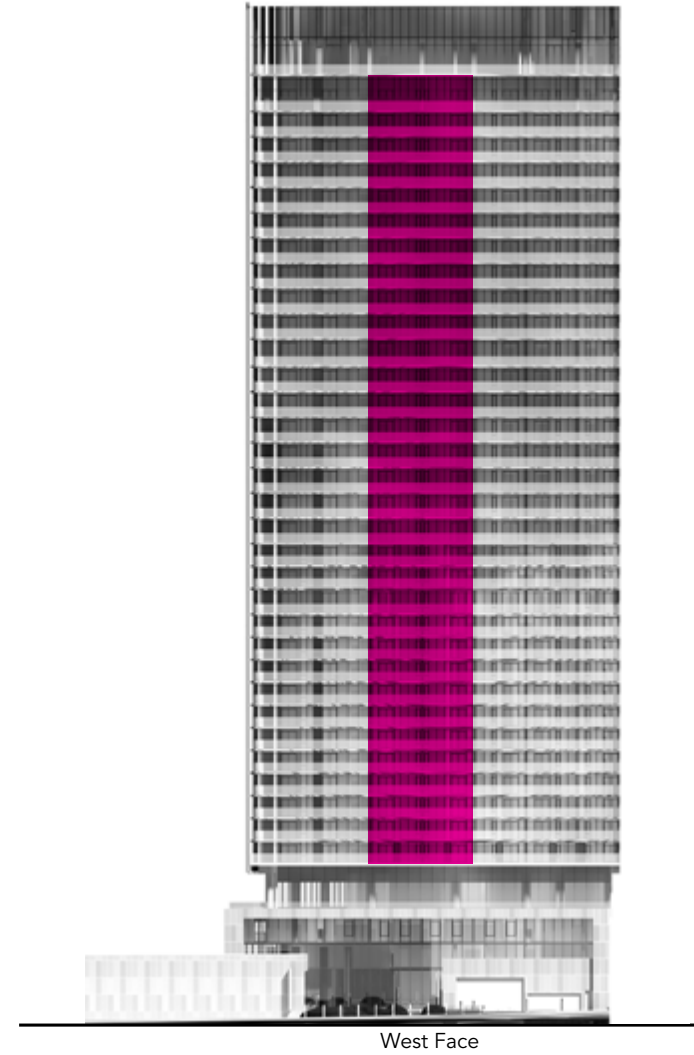


575 Bloor Street East

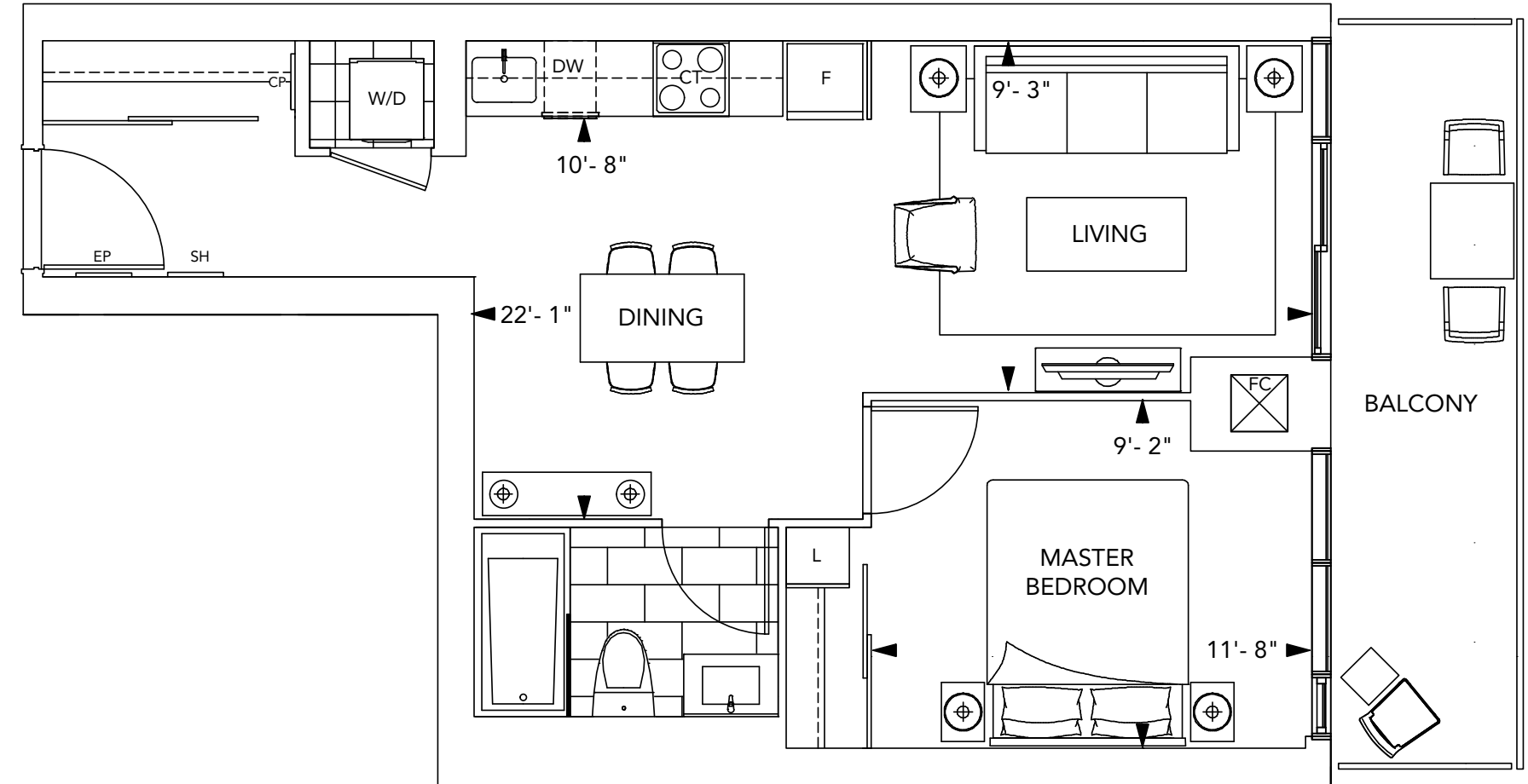
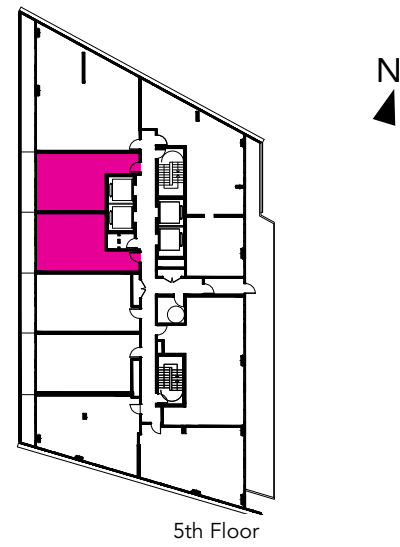
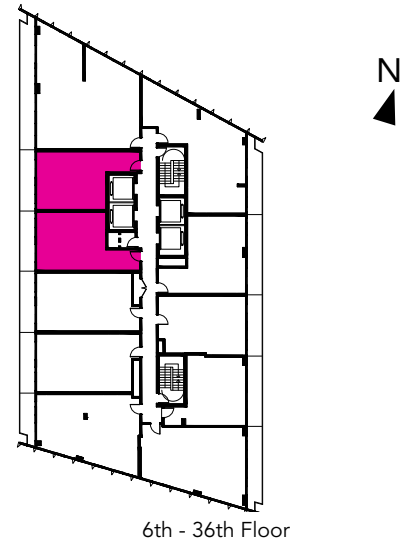


All dimensions are approximate and subject to normal construction variances. Dimensions may exceed the useable floor area. Sizes and specifications subject to change without notice. Furniture is displayed for illustration purposes only and does not necessarily reflect the electrical plan for the suite. Suites are sold unfurnished. E.&O.E. ©Tridel 2016. ©Tridel, "D" design, Tridel Built for Life, Tridel Built for Life Design, and Built Green. Built for Life are registered Trademarks of Tridel Corporation. Project names and logos are Trademarks of their respective owners. All rights reserved. E.&O.E. January 2017.

Suite 1B / 1BR
1 Bedroom •

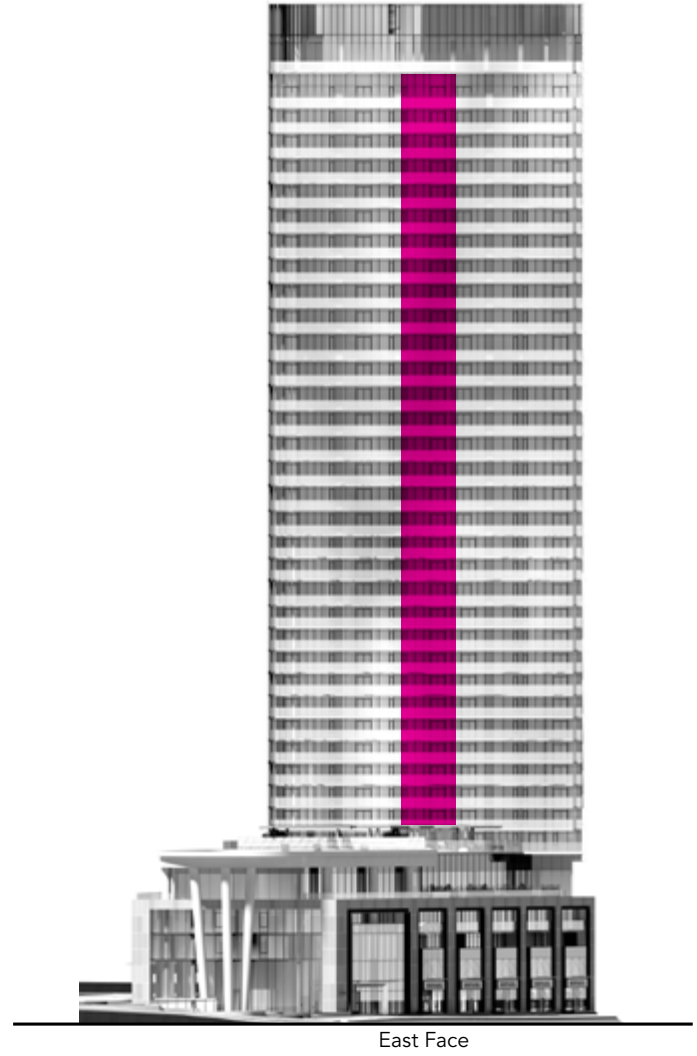


575 Bloor Street East

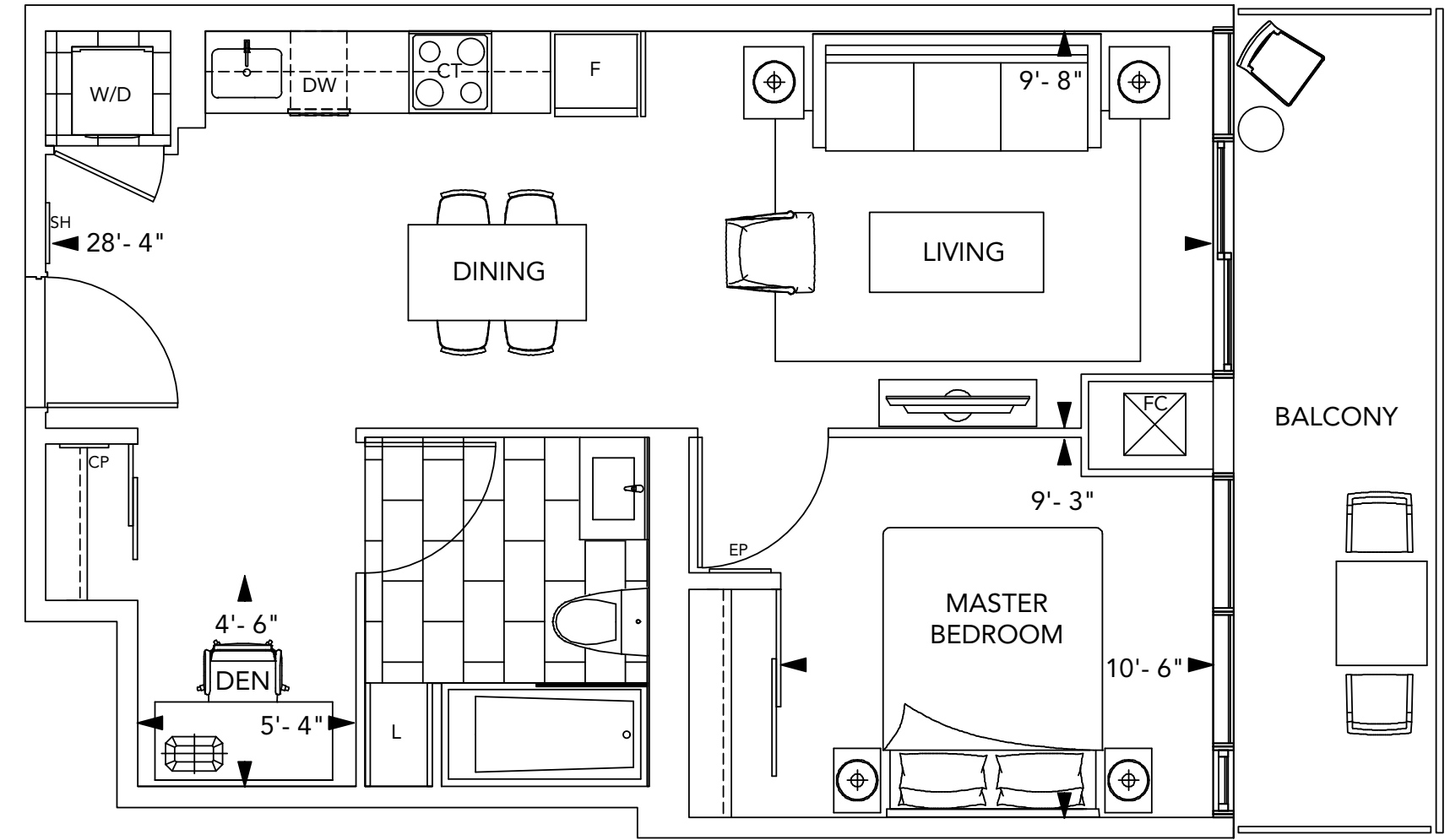
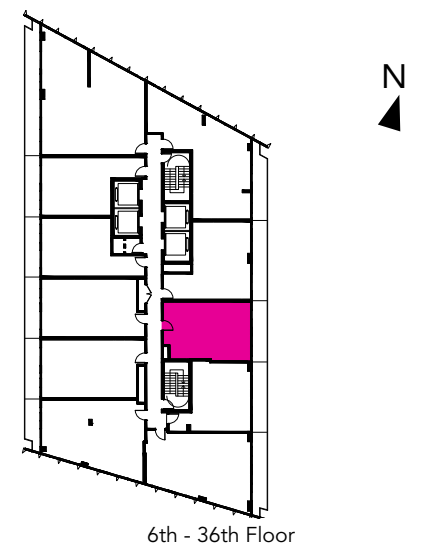


All dimensions are approximate and subject to normal construction variances. Dimensions may exceed the useable floor area. Sizes and specifications subject to change without notice. Furniture is displayed for illustration purposes only and does not necessarily reflect the electrical plan for the suite. Suites are sold unfurnished. E.&O.E. ©Tridel 2016. ©Tridel, "D" design, Tridel Built for Life, Tridel Built for Life Design, and Built Green. Built for Life are registered Trademarks of Tridel Corporation. Project names and logos are Trademarks of their respective owners. All rights reserved. E.&O.E. January 2017.

Suite 1C+D
1 Bedroom + Den •

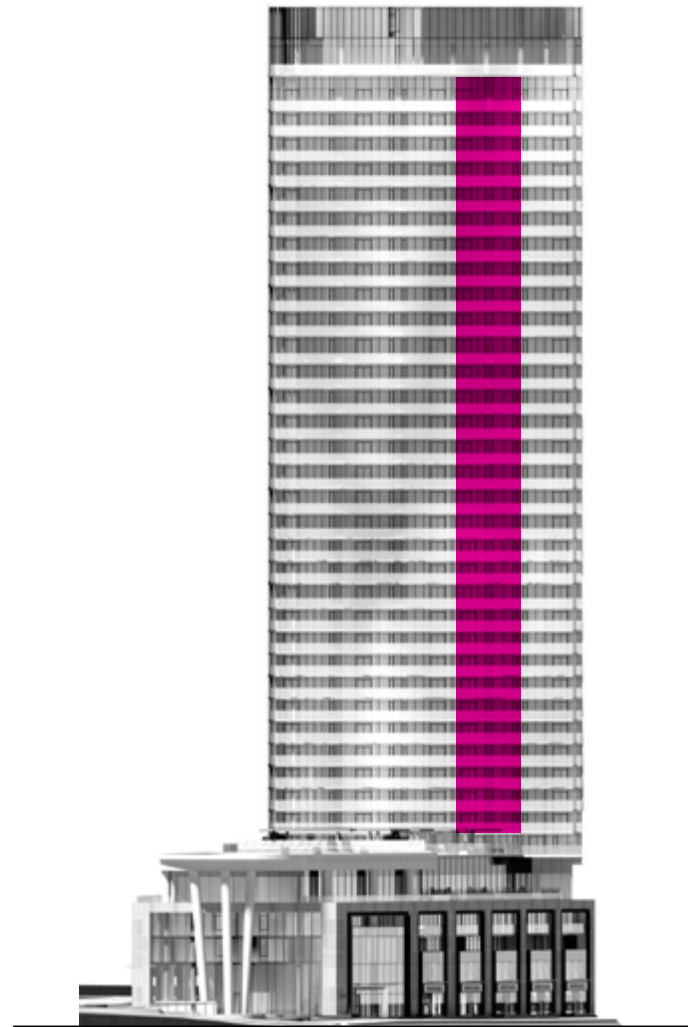


575 Bloor Street East



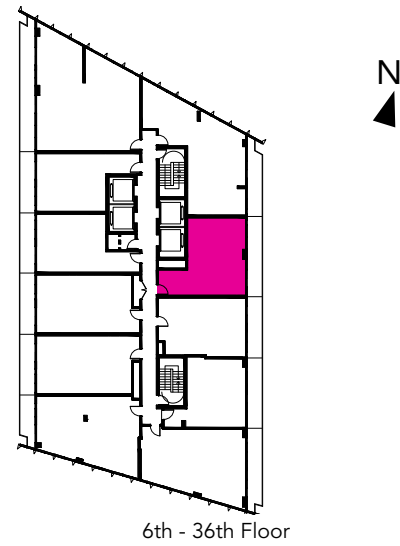
All dimensions are approximate and subject to normal construction variances. Dimensions may exceed the useable floor area. Sizes and specifications subject to change without notice. Furniture is displayed for illustration purposes only and does not necessarily reflect the electrical plan for the suite. Suites are sold unfurnished. E.&O.E. ©Tridel 2016. ©Tridel, "D" design, Tridel Built for Life, Tridel Built for Life Design, and Built Green. Built for Life are registered Trademarks of Tridel Corporation. Project names and logos are Trademarks of their respective owners. All rights reserved. E.&O.E. January 2017.

Suite 1D+D
1 Bedroom + Den •

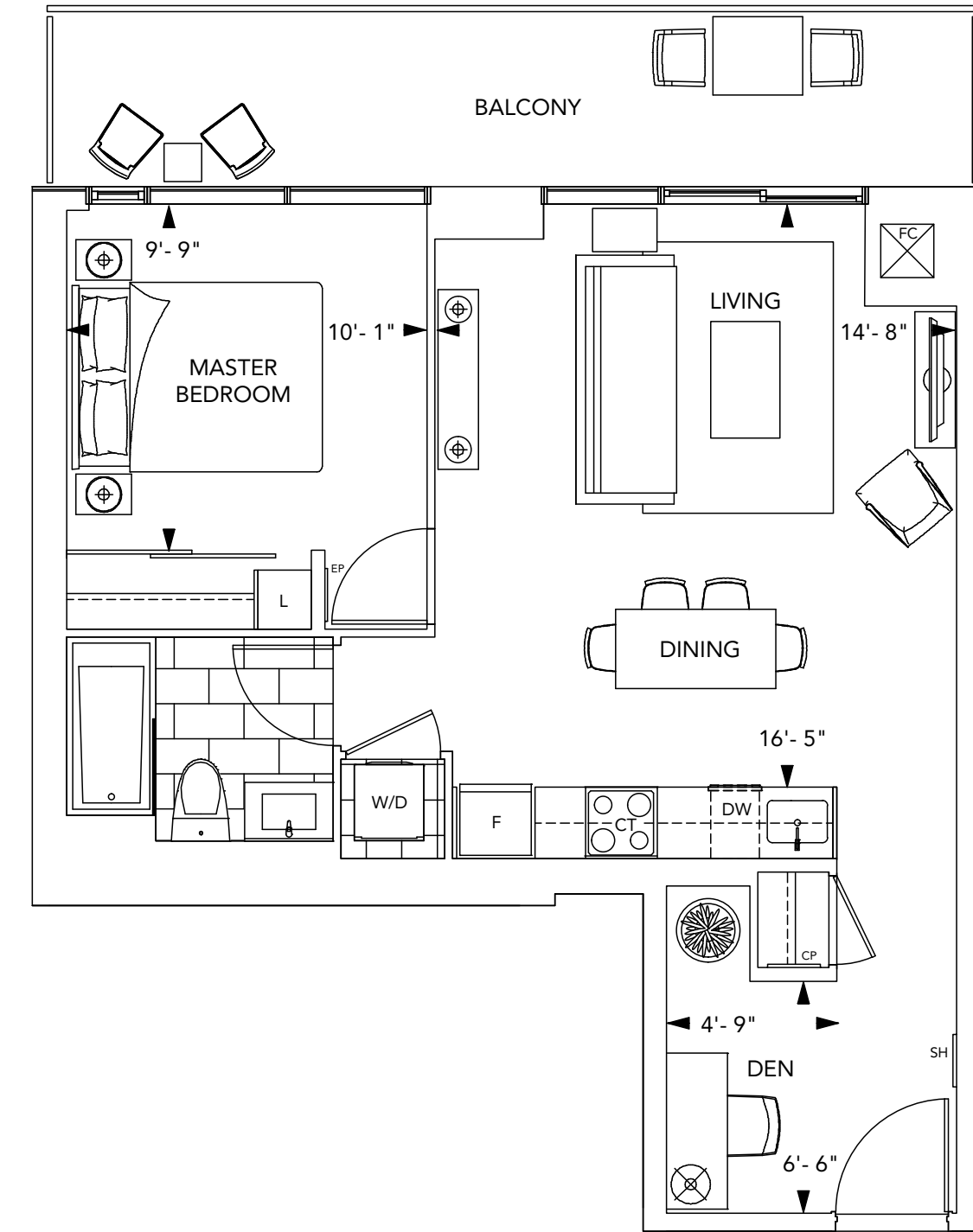


East Face

575 Bloor Street East

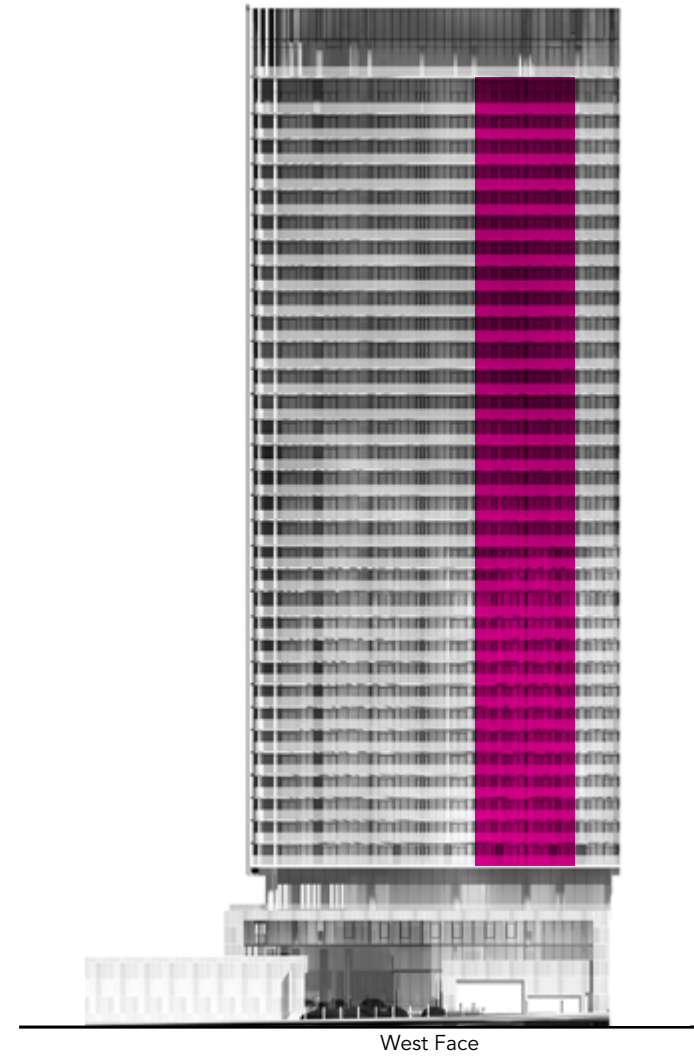


6th - 36th Floor

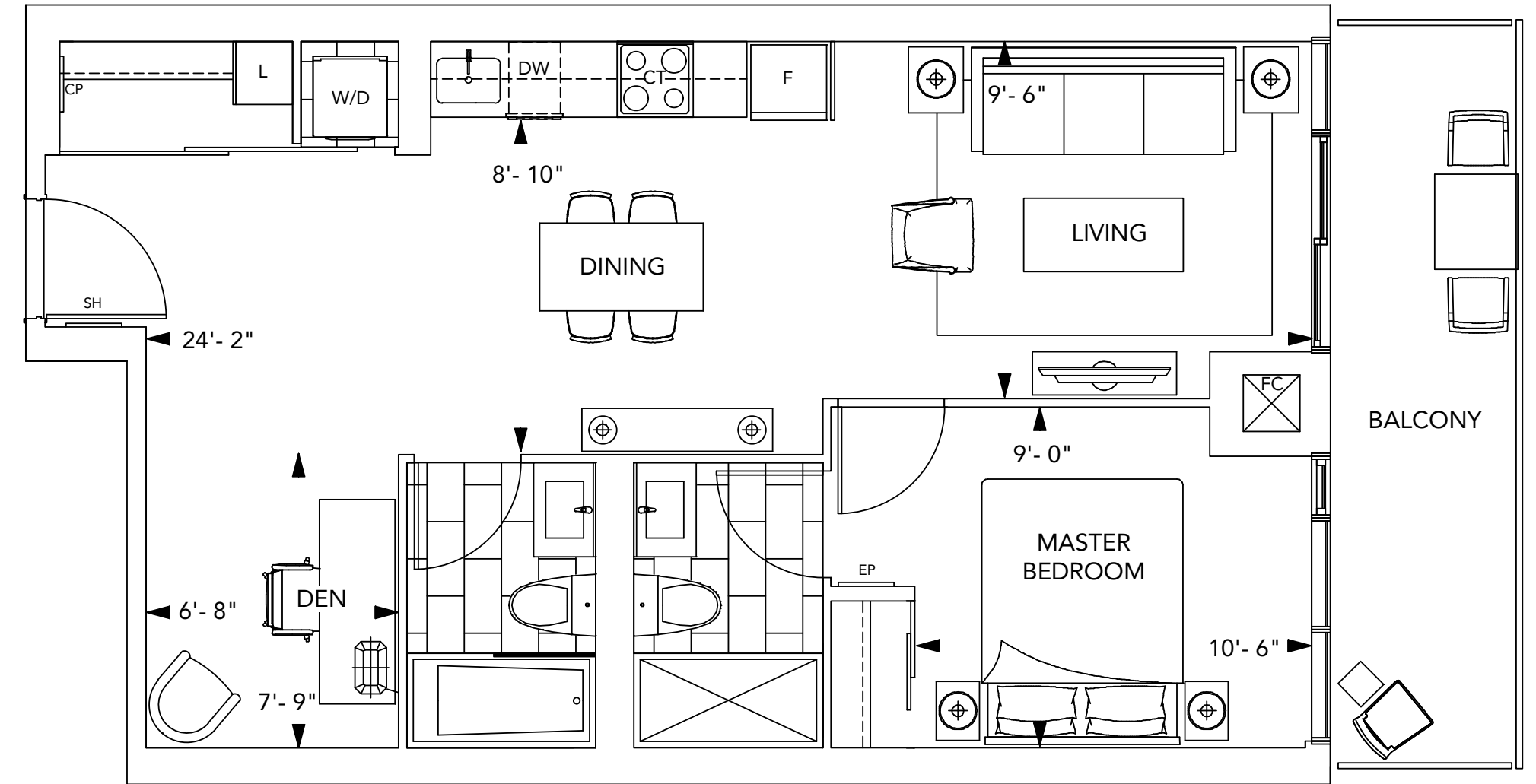
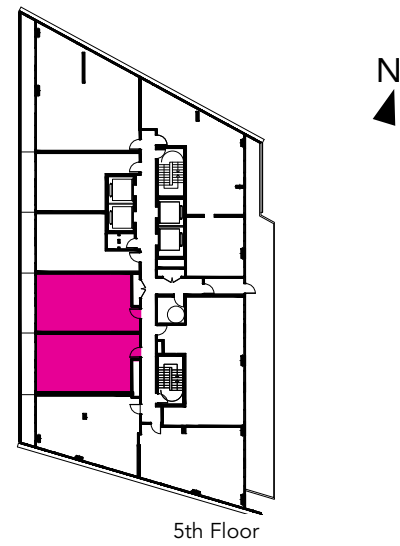
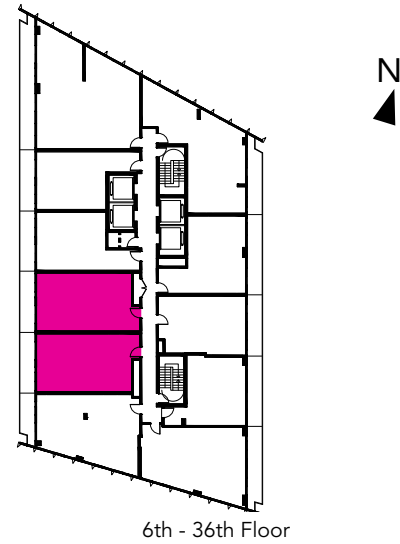


All dimensions are approximate and subject to normal construction variances. Dimensions may exceed the useable floor area. Sizes and specifications subject to change without notice. Furniture is displayed for illustration purposes only and does not necessarily reflect the electrical plan for the suite. Suites are sold unfurnished. E.&O.E. ©Tridel 2016. ©Tridel, "D" design, Tridel Built for Life, Tridel Built for Life Design, and Built Green. Built for Life are registered Trademarks of Tridel Corporation. Project names and logos are Trademarks of their respective owners. All rights reserved. E.&O.E. January 2017.

Suite 1E+D / 1E+DR
1 Bedroom + Den •

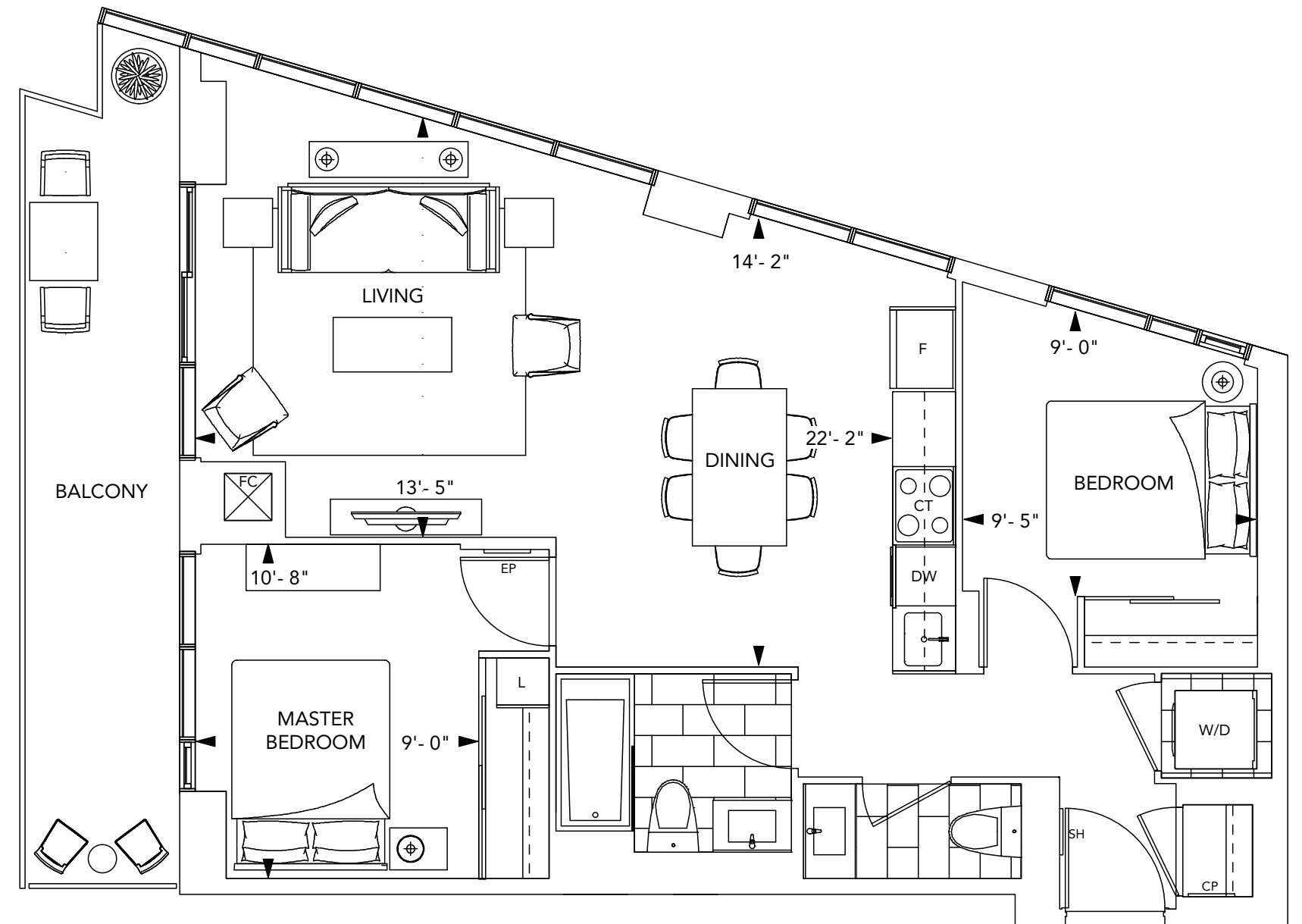
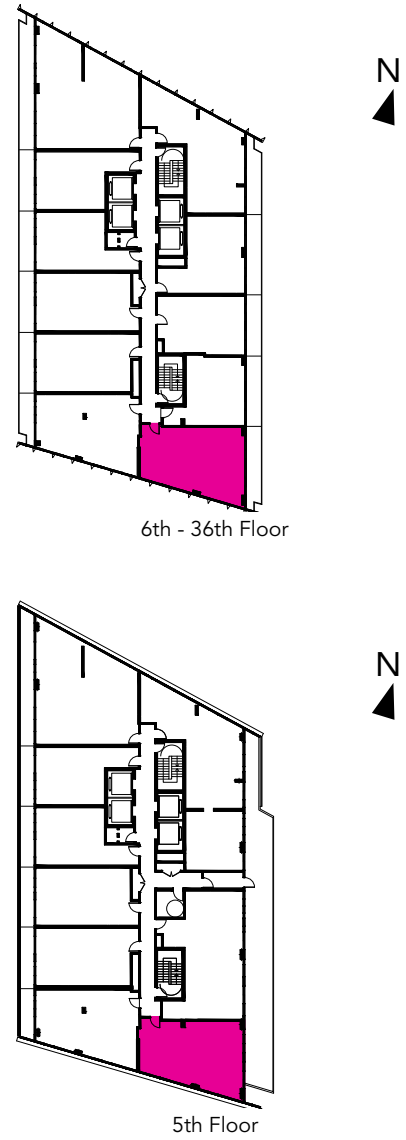
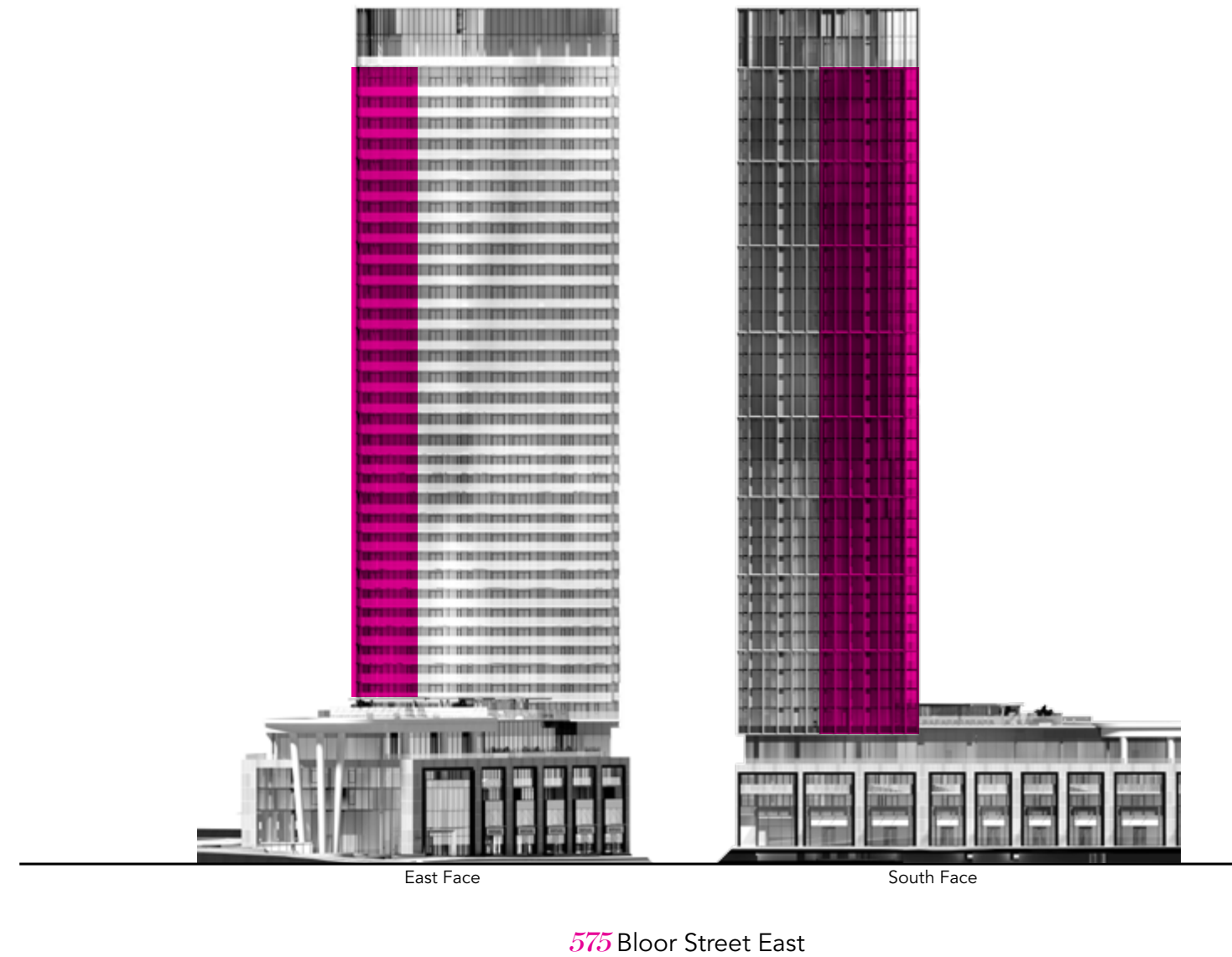


575 Bloor Street East



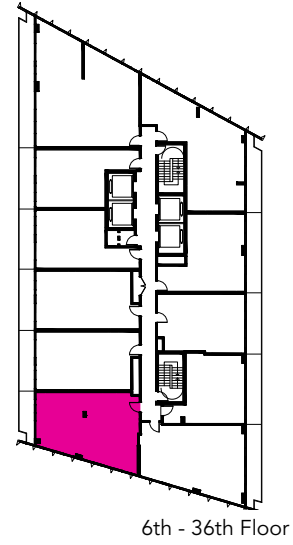
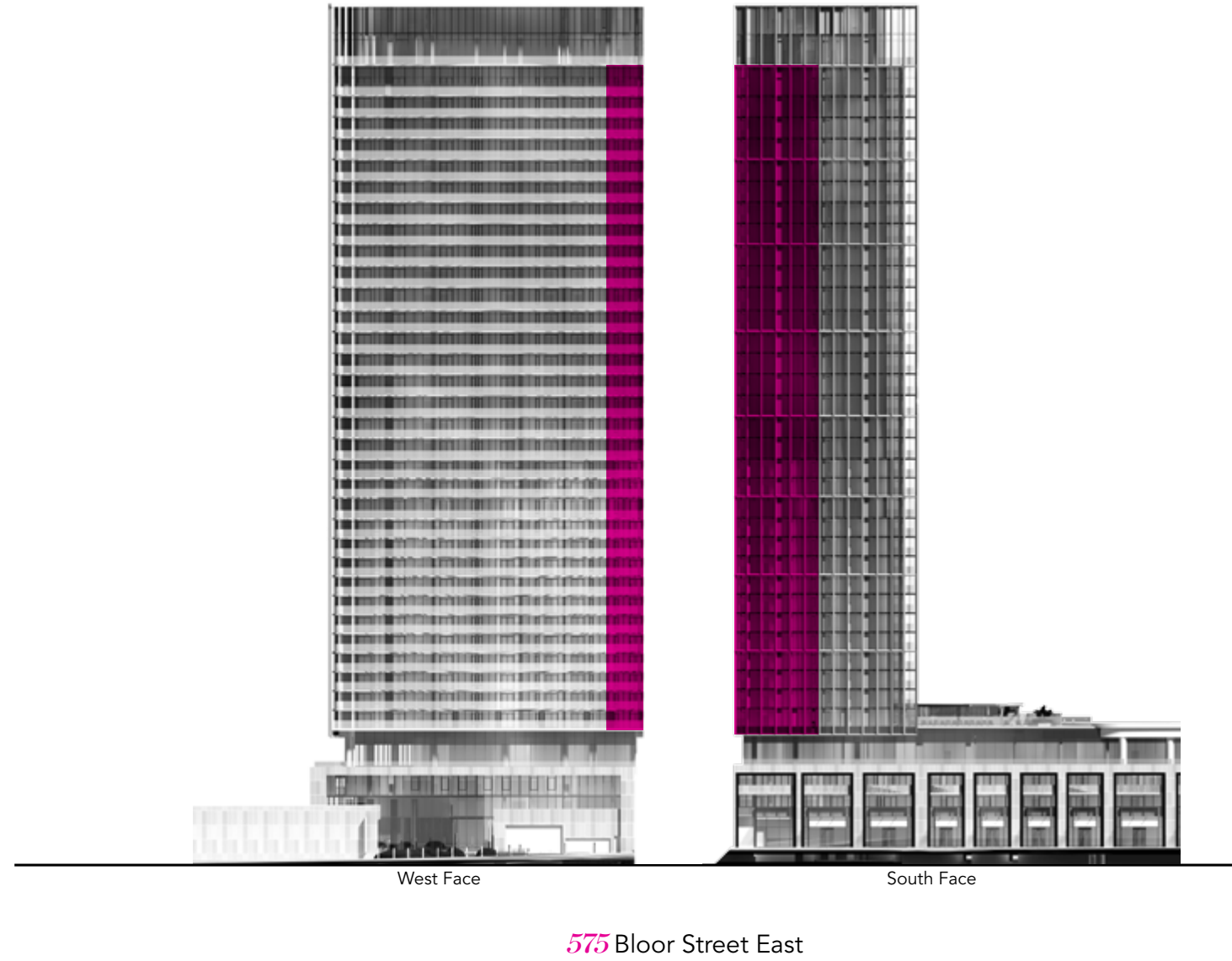
All dimensions are approximate and subject to normal construction variances. Dimensions may exceed the useable floor area. Sizes and specifications subject to change without notice. Furniture is displayed for illustration purposes only and does not necessarily reflect the electrical plan for the suite. Suites are sold unfurnished. E.&O.E. ©Tridel 2016. ©Tridel, "D" design, Tridel Built for Life, Tridel Built for Life Design, and Built Green. Built for Life are registered Trademarks of Tridel Corporation. Project names and logos are Trademarks of their respective owners. All rights reserved. E.&O.E. January 2017.

Suite 2A
2 Bedroom •

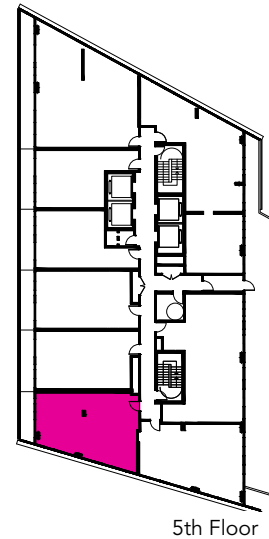


All dimensions are approximate and subject to normal construction variances. Dimensions may exceed the useable floor area. Sizes and specifications subject to change without notice. Furniture is displayed for illustration purposes only and does not necessarily reflect the electrical plan for the suite. Suites are sold unfurnished. E.&O.E. ©Tridel 2016. ©Tridel, "D" design, Tridel Built for Life, Tridel Built for Life Design, and Built Green. Built for Life are registered Trademarks of Tridel Corporation. Project names and logos are Trademarks of their respective owners. All rights reserved. E.&O.E. January 2017.

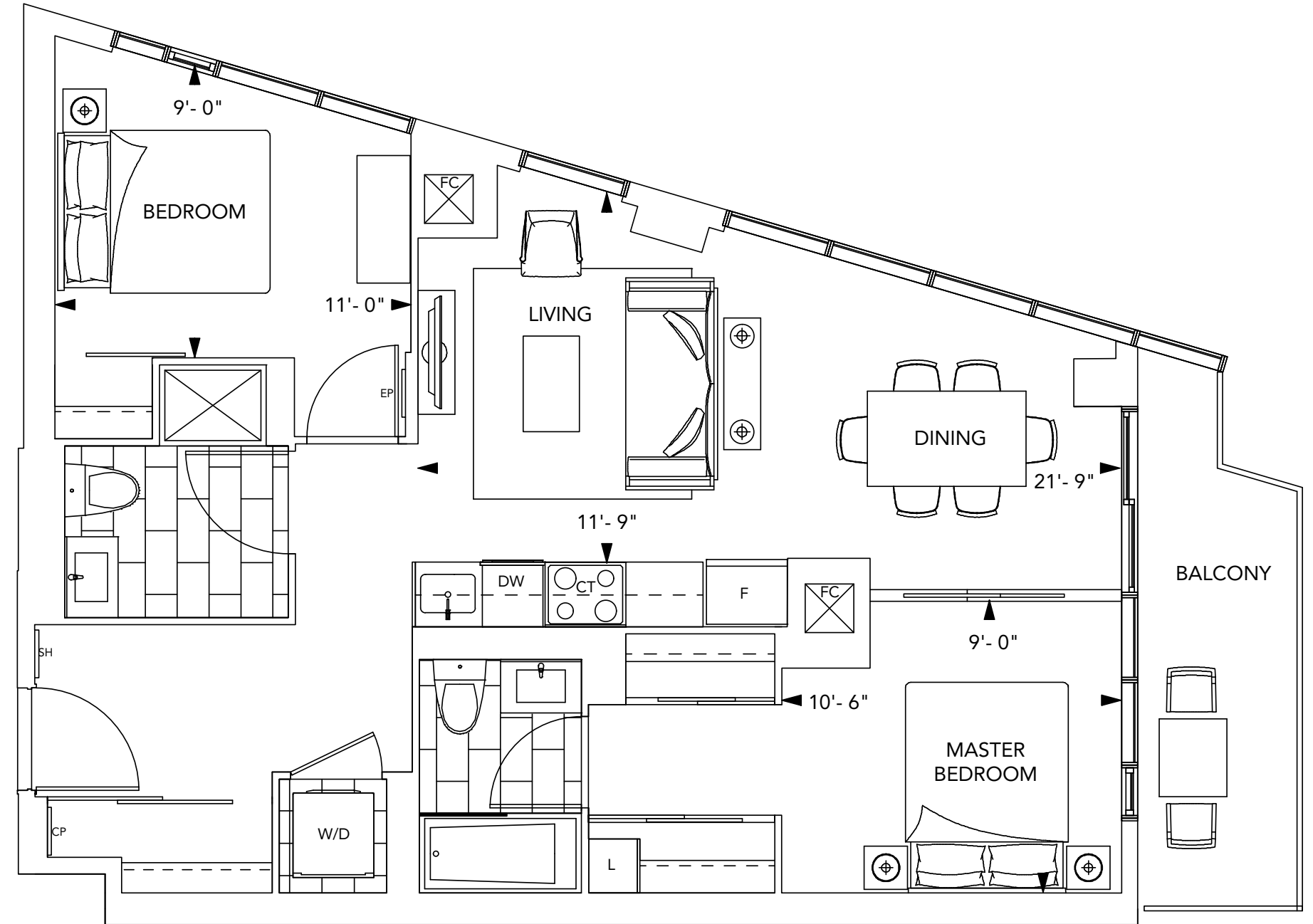
Suite 2B
2 Bedroom •



6th - 36th Floor

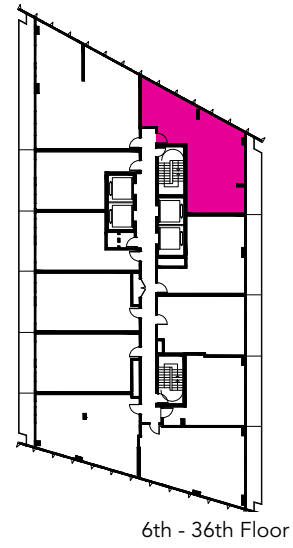


5th Floor

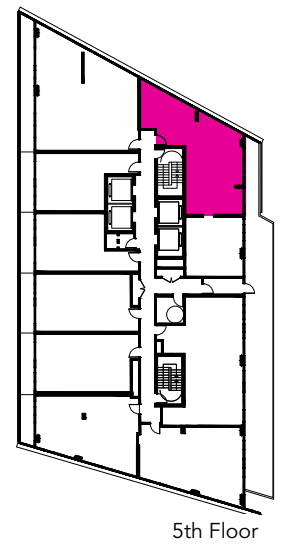


All dimensions are approximate and subject to normal construction variances. Dimensions may exceed the useable floor area. Sizes and specifications subject to change without notice. Furniture is displayed for illustration purposes only and does not necessarily reflect the electrical plan for the suite. Suites are sold unfurnished. E.&O.E. ©Tridel 2016. ©Tridel, "D" design, Tridel Built for Life, Tridel Built for Life Design, and Built Green. Built for Life are registered Trademarks of Tridel Corporation. Project names and logos are Trademarks of their respective owners. All rights reserved. E.&O.E. January 2017.

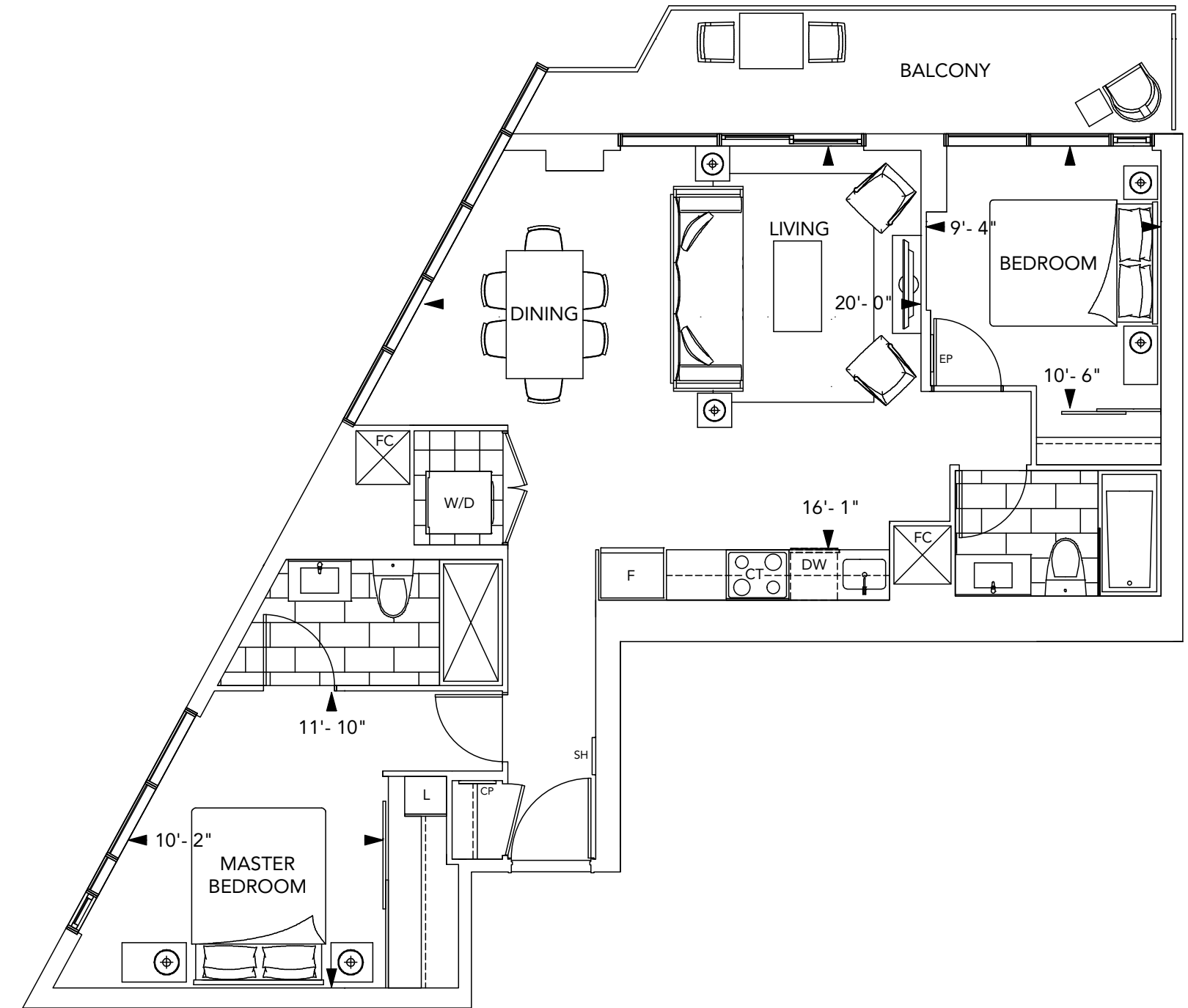
Suite 2C
2 Bedroom •



6th - 36th Floor

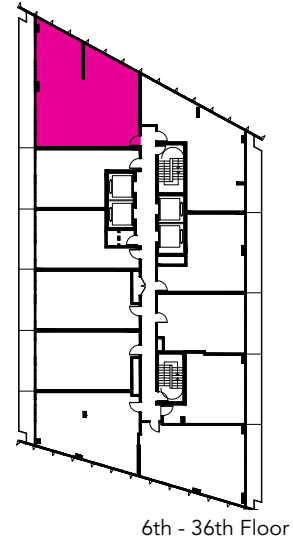
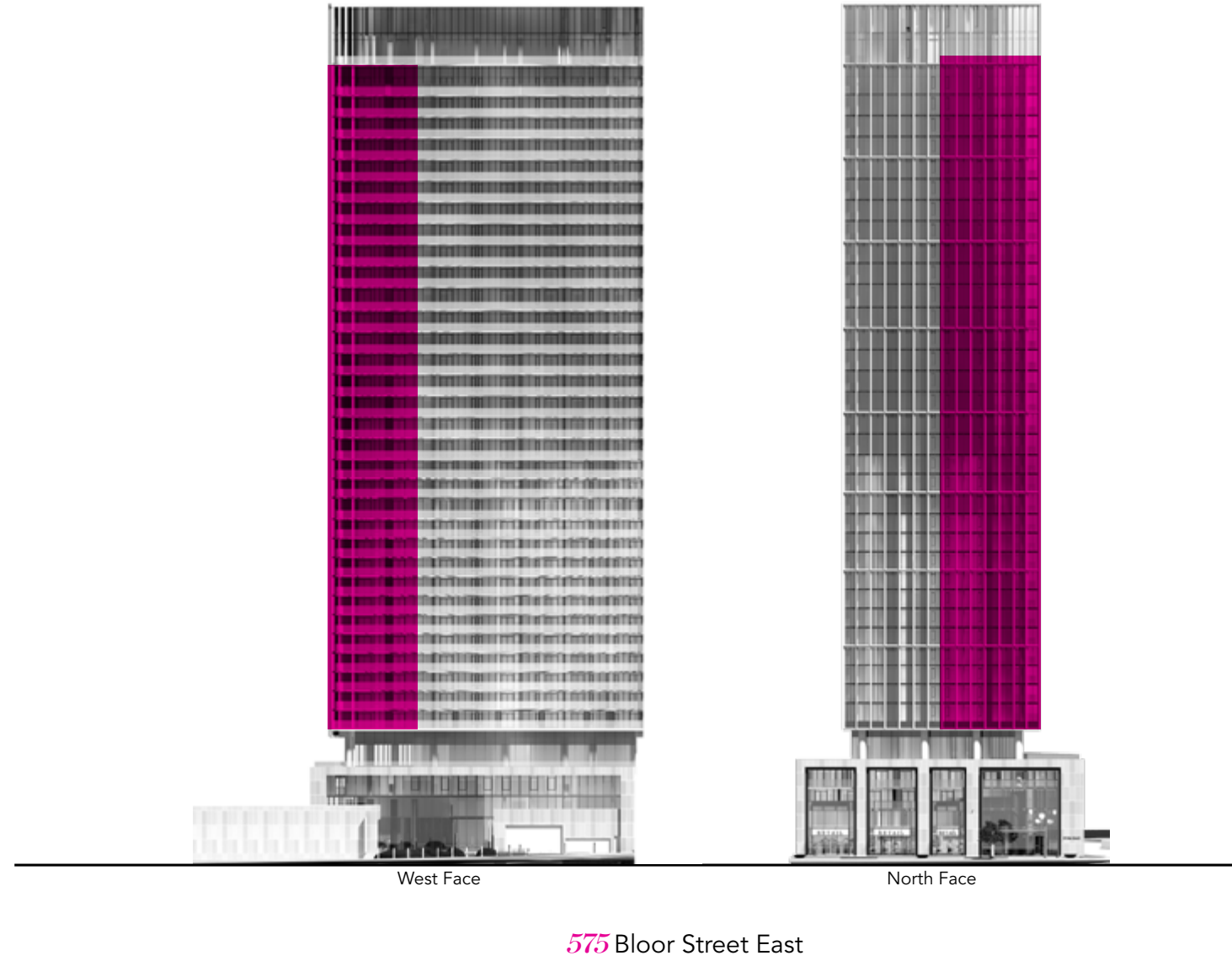


5th Floor

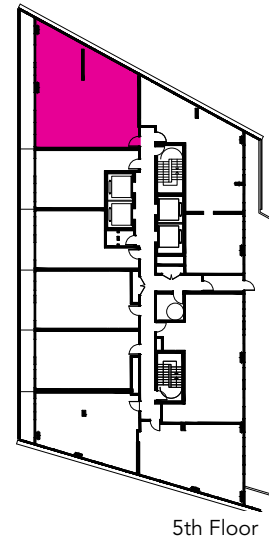


All dimensions are approximate and subject to normal construction variances. Dimensions may exceed the useable floor area. Sizes and specifications subject to change without notice. Furniture is displayed for illustration purposes only and does not necessarily reflect the electrical plan for the suite. Suites are sold unfurnished. E.&O.E. ©Tridel 2016. ©Tridel, "D" design, Tridel Built for Life, Tridel Built for Life Design, and Built Green. Built for Life are registered Trademarks of Tridel Corporation. Project names and logos are Trademarks of their respective owners. All rights reserved. E.&O.E. January 2017.

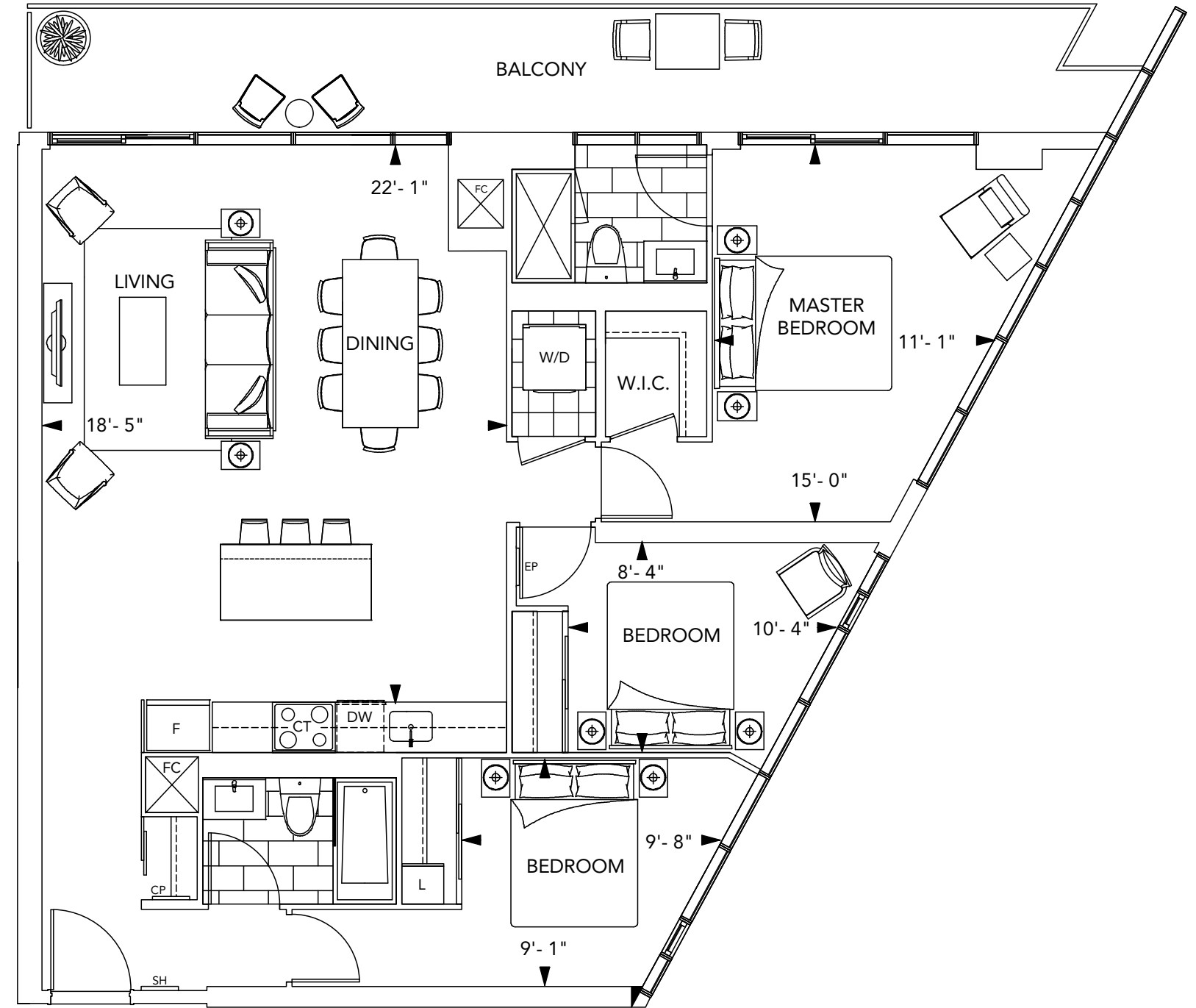
Suite 3A
3 Bedroom •



6th - 36th Floor



5th Floor



All dimensions are approximate and subject to normal construction variances. Dimensions may exceed the useable floor area. Sizes and specifications subject to change without notice. Furniture is displayed for illustration purposes only and does not necessarily reflect the electrical plan for the suite. Suites are sold unfurnished. E.&O.E. ©Tridel 2016. ©Tridel, "D" design, Tridel Built for Life, Tridel Built for Life Design, and Built Green. Built for Life are registered Trademarks of Tridel Corporation. Project names and logos are Trademarks of their respective owners. All rights reserved. E.&O.E. January 2017.

Suite Features & Finishes

GENERAL

- Smooth ceilings painted white to all areas of suite.
- The ceiling height of the unit will be approximately 8' for Floors 5 to 18 inclusive, measured from the upper surface of the concrete floor slab to the underside of the concrete ceiling slab, provided however that various areas of the dwelling unit may contain (or be subject to) ceiling bulkheads and/or dropped ceilings, in order to facilitate the installation of structural components, mechanical systems and/or ductwork, and accordingly in those areas of the unit that are subject to said bulkheads and/or dropped ceilings the overall ceiling height will be reduced accordingly.
- The ceiling height of the unit will be approximately 9' for Floors 2 and 3 and 19 to 36 inclusive, measured from the upper surface of the concrete floor slab to the underside of the concrete ceiling slab, provided however that various areas of the dwelling unit may contain (or be subject to) ceiling bulkheads and/or dropped ceilings, in order to facilitate the installation of structural components, mechanical systems and/or ductwork, and accordingly in those areas of the unit that are subject to said bulkheads and/or dropped ceilings the overall ceiling height will be reduced accordingly.
- Interior walls are primed and then painted with two coats of off-white, quality latex paint (bathroom(s) painted satin off-white, and all woodwork and trim painted with durable white semi-gloss paint). Paints have low levels of volatile organic compounds (VOCs).
- 6'-8" interior contemporary style doors with metal lever hardware for suites with 8' ceilings. Suites with 9' ceilings will feature 7' interior contemporary style doors.

FLOOR COVERINGS

- Premium plank laminate floating floor with acoustic underlay to all rooms except bathroom(s) and laundry.
- Designer selected premium porcelain floor tiles in bathroom(s).
- White ceramic floor tiles in laundry/storage areas.

KITCHEN

- Selection of one of three designer kitchen cabinetry packages with two tone kitchen cabinets featuring contemporary style doors. Finishes include designer hardware.
 - Choice of granite or quartz kitchen countertop with polished single square edge and undermount single basin stainless steel sink.
 - Tile backsplash.
 - Polished chrome, single lever kitchen faucet, complete with pull out spray.
 - Surface mounted lighting in kitchen area.
 - LED undercabinet lighting.
- 1 bedroom and 1 bedroom plus den suites will feature appliances with:
- Panel ready energy efficient 18" dishwasher.
 - Counter depth energy efficient stainless steel 24" refrigerator with bottom mount freezer.
 - 24" stainless steel microwave/hood combo.
 - 24" built in convection oven in stainless steel finish.
 - 24" built in glass ceramic cooktop.
- 2 bedroom, 2 bedroom plus den and 3 bedroom suites will feature appliances with:
- Panel ready energy efficient 24" dishwasher.
 - Counter depth energy efficient stainless steel 30" refrigerator with bottom mount freezer.
 - 30" stainless steel microwave/hood combo.
 - 30" built in convection oven in stainless steel finish.
 - 30" built in glass ceramic cooktop.

BATHROOM(S)

- Vanity including solid surface top with integrated rectangular basin.
- Contemporary vanity mirror with integrated back lighting.
- 5' white soaker tub with polished chrome faucet*.
- Choice of ceramic and/or porcelain tiles in tub* and shower* enclosure and vanity wall subject to design.
- Potlight(s) in tub(s)* and shower enclosure(s)*.
- Pressure balanced and temperature controlled single lever shower faucet.
- High pressure, low-flow shower head(s).
- Polished chrome single lever vanity faucet.
- Dual flush, low consumption white toilet(s).
- Shower base complete with frameless glass shower enclosure* with chrome hardware.
- Polished chrome towel bar and toilet paper holder.

LAUNDRY

- Heavy-duty wiring and receptacle for dryer.
- 1 bedroom and 1 bedroom plus den suites to feature 24" wide stacked Energy Star high efficiency front loading washer and dryer (complete with stainless steel braided hose connections).
- 2 bedroom, 2 bedroom plus den and 3 bedroom suites to feature 27" wide stacked Energy Star high efficiency front loading washer and dryer.
- Laundry sink* complete with upper and lower cabinetry.





BUILT *for you.*

Award-winning homes.
Relax it's aTridel.