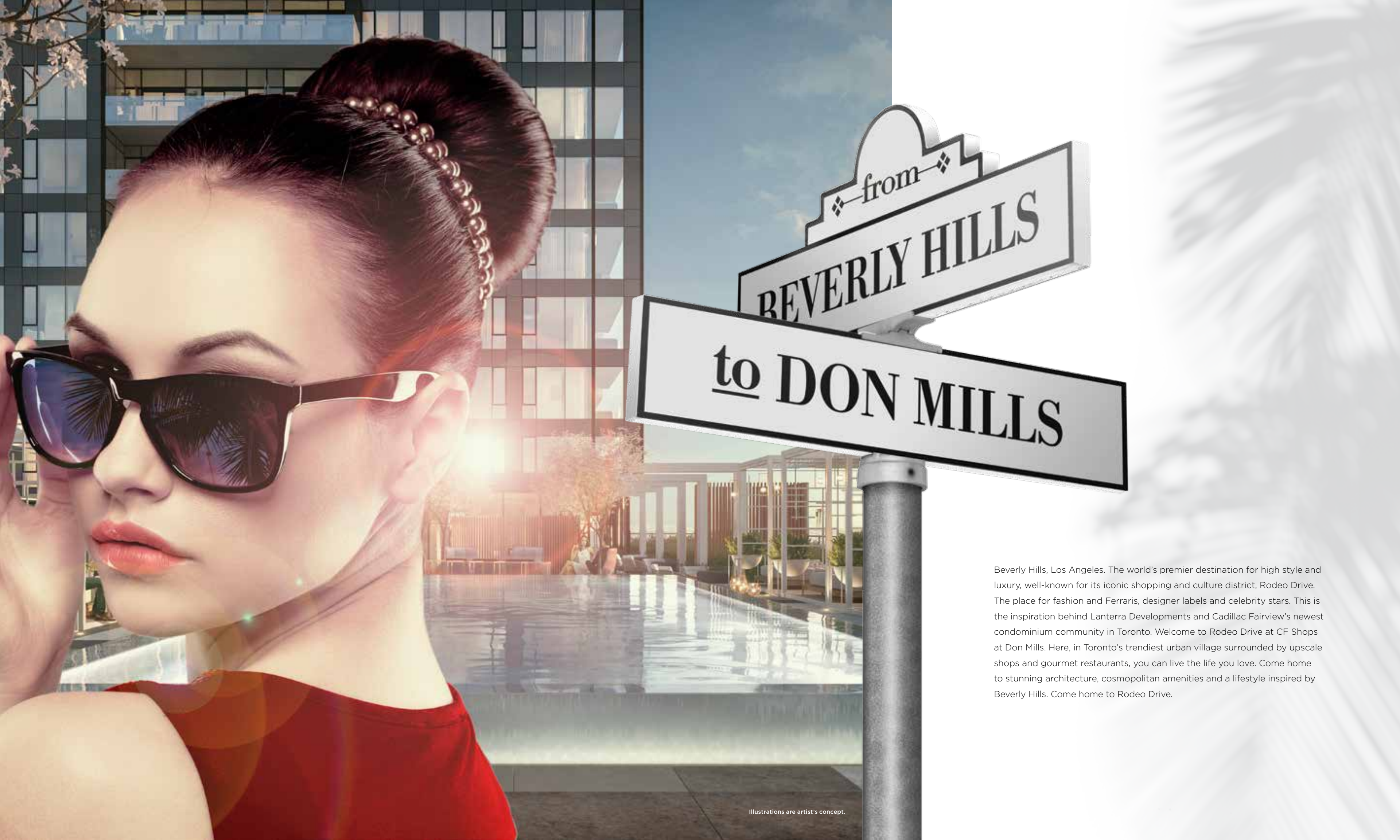




Rodeo
DRIVE
CONDOMINIUMS





from
BEVERLY HILLS
to **DON MILLS**

Beverly Hills, Los Angeles. The world's premier destination for high style and luxury, well-known for its iconic shopping and culture district, Rodeo Drive. The place for fashion and Ferraris, designer labels and celebrity stars. This is the inspiration behind Lanterra Developments and Cadillac Fairview's newest condominium community in Toronto. Welcome to Rodeo Drive at CF Shops at Don Mills. Here, in Toronto's trendiest urban village surrounded by upscale shops and gourmet restaurants, you can live the life you love. Come home to stunning architecture, cosmopolitan amenities and a lifestyle inspired by Beverly Hills. Come home to Rodeo Drive.

Illustrations are artist's concept.



Stunning architecture by the renowned firm of Hariri Pontarini and stylish interiors by award-winning Alessandro Munge set Rodeo Drive apart as an inspiring landmark in the Don Mills community. Set on a majestic podium, Rodeo Drive rises 32 floors and is marked by a striking black-and-white colour palette evocative of classic modernism. The tower offers panoramic views of downtown Toronto, Don Mills and the Bridle Path neighbourhood, with park-like vistas in every direction.



Illustrations are artist's concept.



Perforated metal screens, pre-cast panels and fritted white glass on the building facade speak to a contemporary design vocabulary.



The spectacular lobby welcomes you with its soaring 16' ceiling, concierge desk, marble feature walls and sculptural wood paneling. The overall ambience is one of warmth in a space that is classically minimalist. A prestigious address for those who appreciate the finer things in life, Rodeo Drive is a statement of extraordinary distinction.



From Here to Anywhere

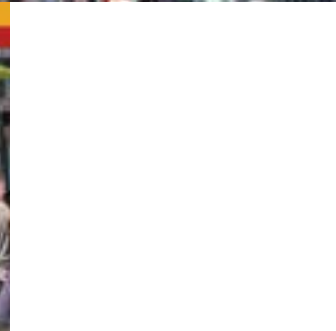
Welcome to Toronto's coolest urban village. CF Shops at Don Mills is a European-inspired walkable plaza complete with a central Town Square, beautiful landscaping and a Douglas Coupland clock tower surrounded by upscale shops, restaurants, offices and residences. It's the perfect place to connect with the community, whether to sip a gourmet coffee or enjoy an event like outdoor yoga or music festival. Here you can experience Toronto's finest name-brand shopping and dining, including Canada's first Anthropologie store, Bier Markt, Glow grill and wine bar, Joey Restaurant and celebrity chef, Mark McEwan's Fabbrica.

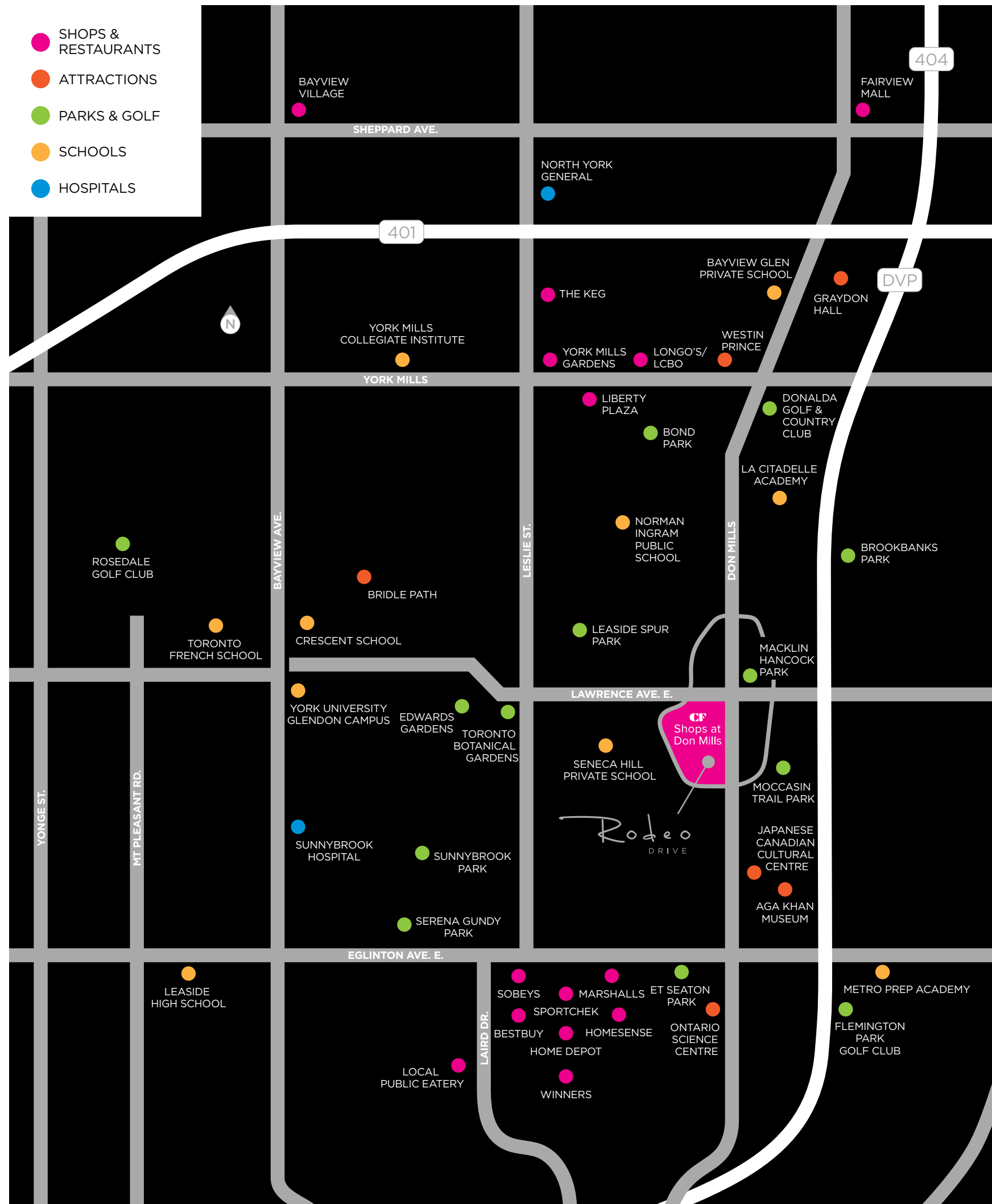




Living at Rodeo Drive, you are connected to everything that matters. Envisioned as Toronto's first master-planned community, Don Mills is in the heart of midtown, connected to great shopping, fine dining, schools, parks, libraries and community centres. The TTC is at your doorstep offering fast connections to the Yonge/Bloor subway line and downtown. Just five minutes to the south, you have the upcoming Crosstown LRT on Eglinton, a speedy gateway to east and west Toronto.

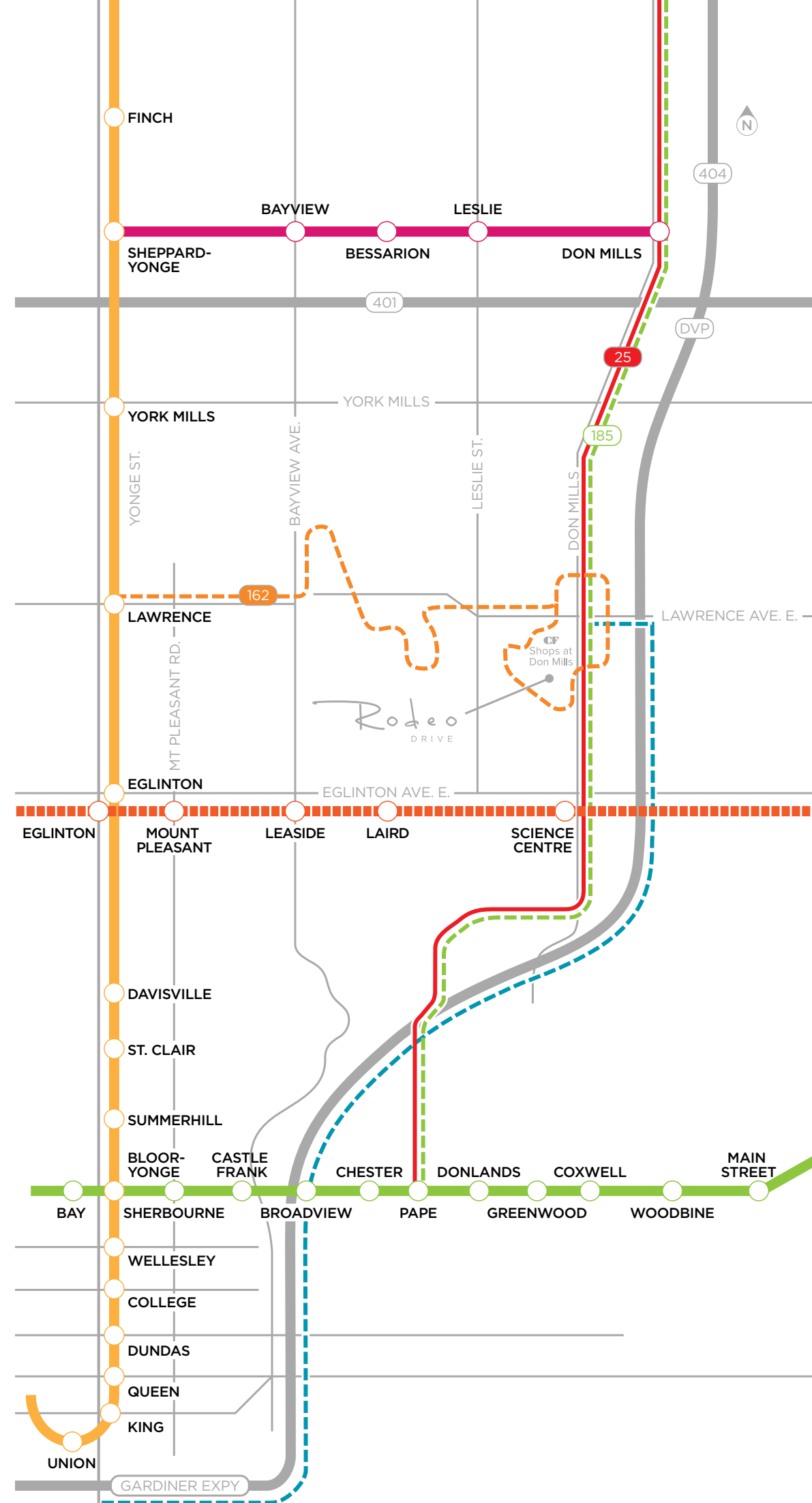
Maps are artist's concept.





LIVE CONNECTED TO EVERYTHING

- 162** 162 Lawrence-Donway To Don Mills
- 185** 185 Don Mills Rocket, North and South to Pape & Bloor (Pape Station)
- 25** 25 Don Mills, North and South to Pape & Bloor (Pape Station)
- DVP** Minutes from the Don Valley Parkway, connecting you to major highways and an express route downtown
- FUTURE LRT** 25 Don Mills, North and South to the future Science Centre Stop on the Eglinton Crosstown LRT



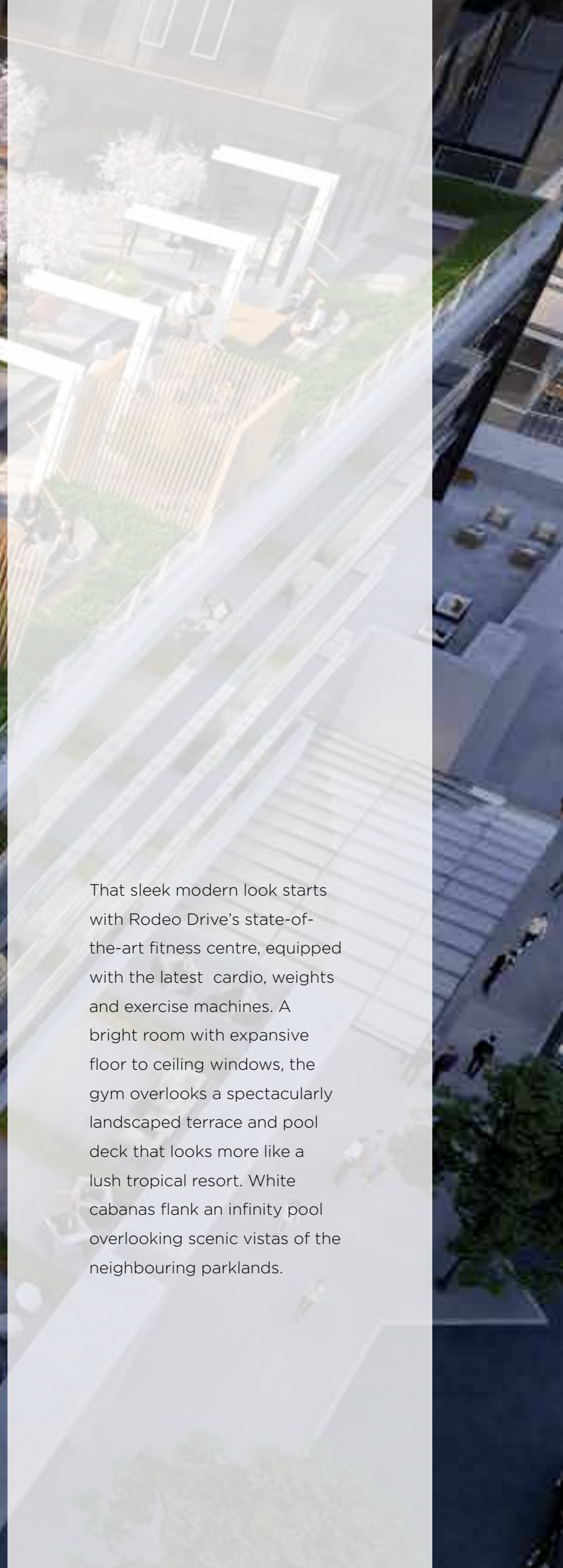
Maps are artist's concept.



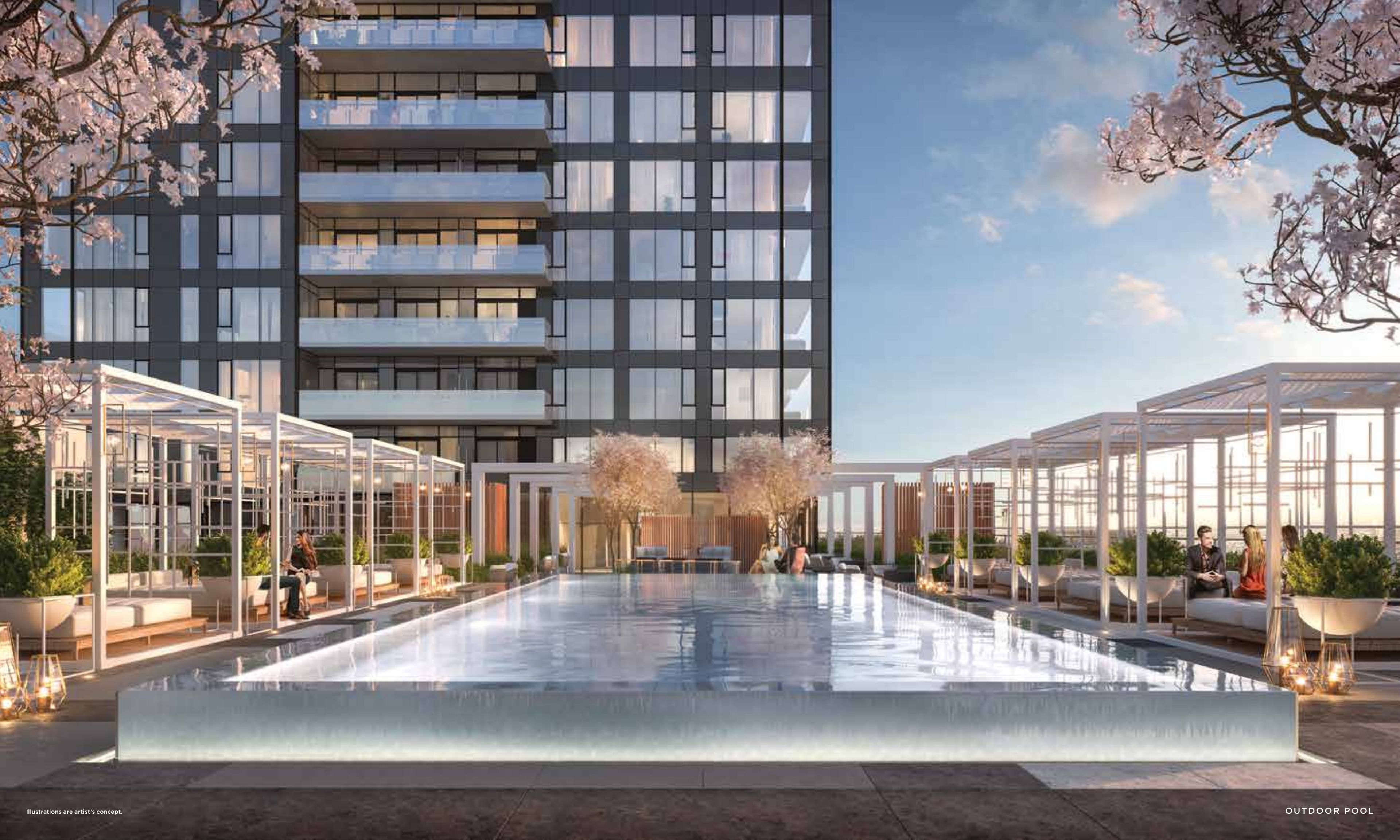
Maps are artist's concept.

from LA to TO

Rodeo Drive offers residents a magnificent array of fitness and social amenities befitting the chic lifestyle of its namesake in Beverly Hills. Award-winning designer Alessandro Munge has designed the amenities to be stylish, cutting edge and totally fashion forward.



That sleek modern look starts with Rodeo Drive's state-of-the-art fitness centre, equipped with the latest cardio, weights and exercise machines. A bright room with expansive floor to ceiling windows, the gym overlooks a spectacularly landscaped terrace and pool deck that looks more like a lush tropical resort. White cabanas flank an infinity pool overlooking scenic vistas of the neighbouring parklands.





Take your summer entertaining to the next level. The fabulous outdoor terrace lounge, with a central firepit and swanky lounge-style seating all around, is the perfect venue to entertain and relax.



LOUNGE

Illustrations are artist's concept.

Make it an occasion to remember on the spectacular outdoor terrace lounge. With its beautifully landscaped ambience and panoramic views of the neighbourhood, your social life is about to get a whole lot more exciting.



Illustrations are artist's concept.

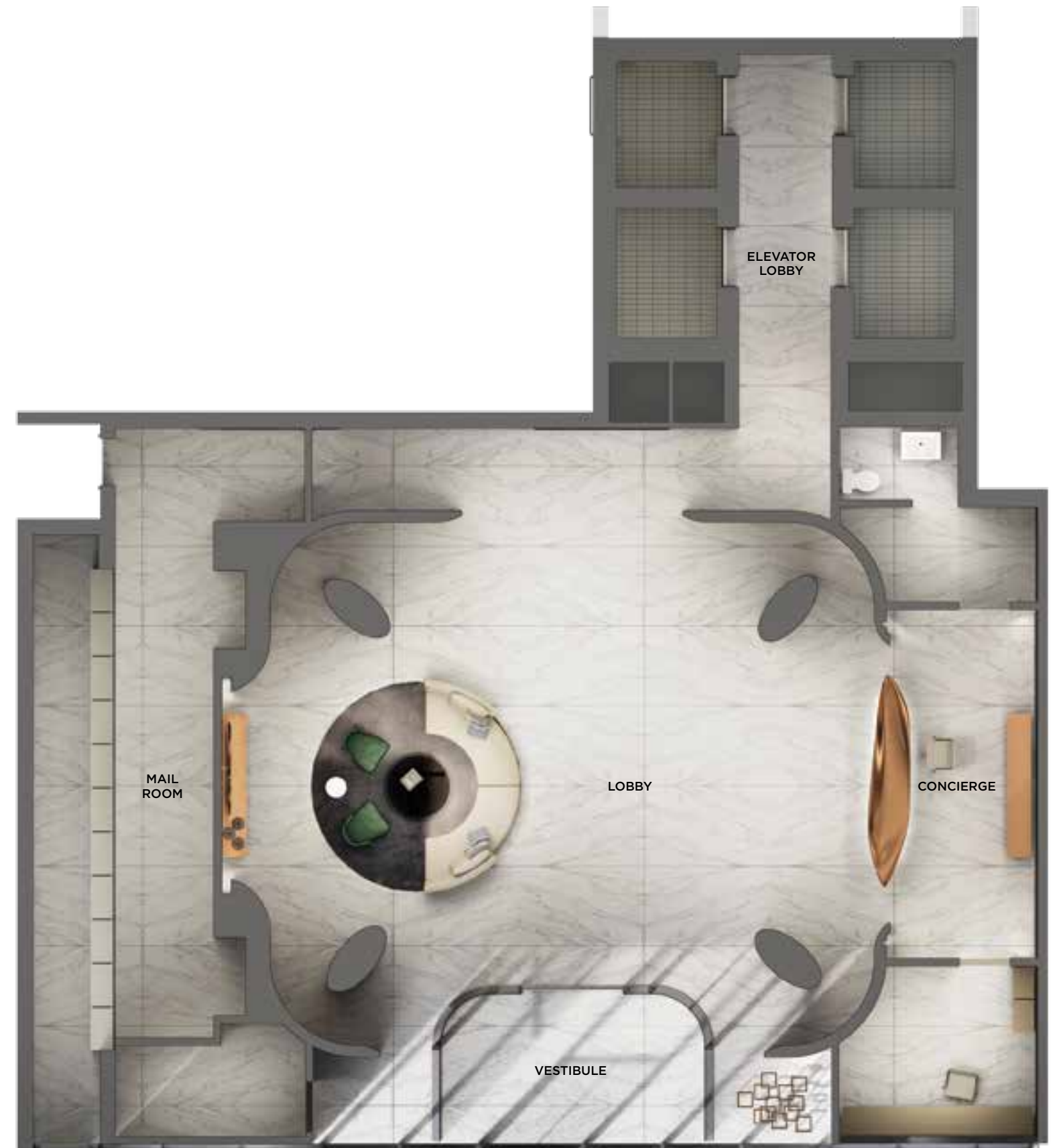
FITNESS ROOM

8TH FLOOR AMENITY PLAN



Illustrations are artist's concept.

LOBBY PLAN





FPO

From the Hills to the Mills

At Rodeo Drive, suite interior design is inspired by a passion for modern comfortable living. Designer Alessandro Munge has envisioned clean open concept spaces that seamlessly flow from one to the other. Bright and spacious interiors are detailed with sleek wood finishes, a contemporary colour palette and natural textures.



Most suites come with spacious balconies, extending your living space to the great outdoors, perfect for summer entertaining or just relaxing by yourself.



Generously proportioned bedrooms offer a tranquil private retreat from the everyday.





BATHROOM

Exquisitely detailed bathrooms with polished tile floors, designer-selected fittings, floating vanities and sleek cabinets evoke a sense of spa-inspired luxury.



Illustrations are artist's concept.

MASTER BATHROOM

Floor to ceiling windows offer great views of the neighbourhood.



Thoughtfully designed layouts maximize form and function while creating the perfect ambience for living, relaxing and entertaining. Welcome to your oasis in the heart of Don Mills.



Views from

RODEO DRIVE



NORTH



SOUTH



WEST



EAST

Features

Finishes

BUILDING FEATURES

- Ground level entry lobby
- 24 Hour Concierge
- Pet Spa
- Eight Floor Amenities include
 - a) Fitness Room
 - b) Washrooms and Change Room
 - c) Unisex Dry Sauna
 - d) Indoor Lounge/Party Room area
 - e) Outdoor pool, Hot Tub and Lounging Deck
 - f) Outdoor Lounge and BBQ Areas
 - g) Dining Room with Kitchen
 - h) Bar Lounge
 - i) Board Room
 - j) Game Room
 - k) Management Office
- Individual storage/bicycle lockers**
- Laminate Glass Balcony Railings

SUITE FINISHES

- Approximately 9 ft. high ceilings *** *****
- Exterior glass sliding doors***
- Solid core entry door with hardware and security viewer
- Approximately 40 Ounce broadloom and upgraded under pad in bedrooms***
- Laminate flooring in den, living rooms, dining rooms, foyers and halls***
- Mirror sliders on closet doors***

- In-suite smoke detector
- Individually controlled heating and cooling system
- Laundry with stacked washer/dryer vented to exterior
- Ceramic flooring in laundry area
- Interior walls painted off-white quality latex paint*

KITCHEN

- Laminate flooring *
- Selection of designer series kitchen cabinetry*
- Granite countertop*
- Designer series ceramic backsplash*
- S/S sink with single lever faucet and pullout vegetable spray***
- S/S counter depth refrigerator ,S/S slide in range with glass top, Panelled multi cycle Dishwasher, S/S Microwave ***
- Built-in hood fan vented to the exterior
- Ceiling mounted lighting fixture*

MASTER ENSUITE BATHROOM

- Marble tile flooring* ***
- Medicine cabinet **
- Vanity with integrated sink
- Safety pressure-balancing valve in tub**
- 5' soaker tub or shower with glass panel with chrome faucets*** **
- Designer selected plumbing fixtures and cabinetry**
- Marble wall tile in tub or shower area ***
- Exterior vented exhaust fan
- Entry privacy lock

MAIN BATHROOM

- Porcelain tile flooring * ***
- Vanity with integrated sink
- Safety pressure-balancing valve in tub**
- 5' soaker tub or shower with glass panel with chrome faucets*** **
- Designer selected plumbing fixtures and cabinetry**
- Porcelain wall tile in tub or shower area ***
- Exterior vented exhaust fan
- Entry privacy lock

ELECTRICAL FEATURES

- Rough in ceiling light outlets in dining room
- Lighting fixtures in bathrooms**
- Lighting fixture in hallway **
- Cable television outlets in den, living room and master bedroom**
- Telephone outlets in living room and master bedroom**
- Service panel with circuit breaker

SECURITY FEATURES

- 24-hour concierge
- 24-hour security cameras in select garage/parking areas
- Closed circuit camera monitoring at select building entry points
- Electronic communication system in lobby vestibule permits visitors to communicate with suite from building entrances

ENERGY EFFICIENCY FEATURES

- Energy Star appliances for refrigerator and dishwasher
- Dual flush toilets
- Energy efficient light bulbs
- Water conserving faucets
- Individually metered hydro

GENERAL:

Please see provisions in Schedule A relating to Purchaser's rights to select finishes and Vendor's rights to install substitute materials and finishes

* Colours and/or materials to be selected from Vendor's standard sample packages, as provided for below. Vendor shall not be responsible for shade differences occurring from different dye lots.

** If applicable

*** As per plan

**** Except bathrooms, laundry, bulkheads and drop ceilings for mechanical systems, as required

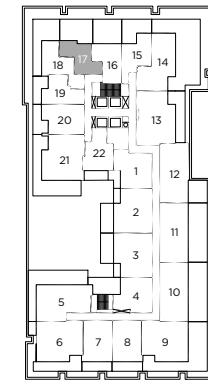
(1) The Vendor shall have the right to make alterations to the selection and specifications relating to Energy Efficient Features.

Dated: June 9th, 2016

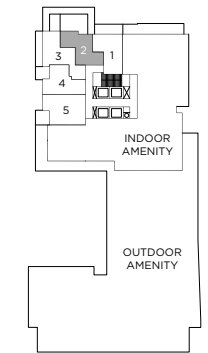
The Suites



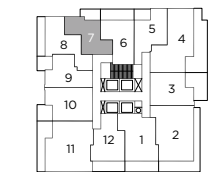
ONE BEDROOM 479 SQ. FT.



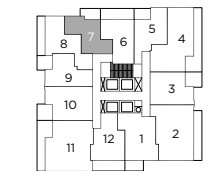
FLOOR 2



FLOOR 8



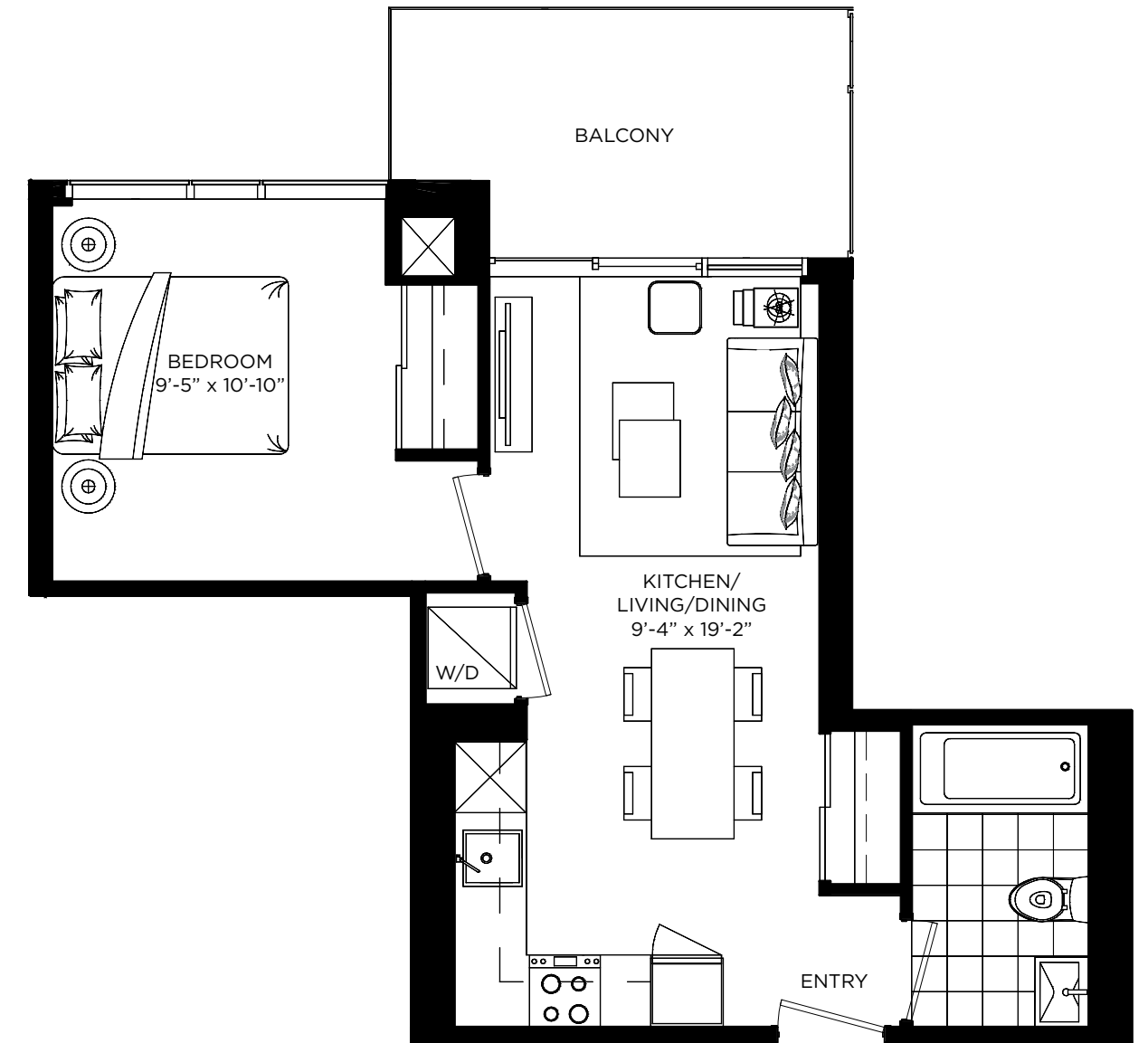
FLOOR 9



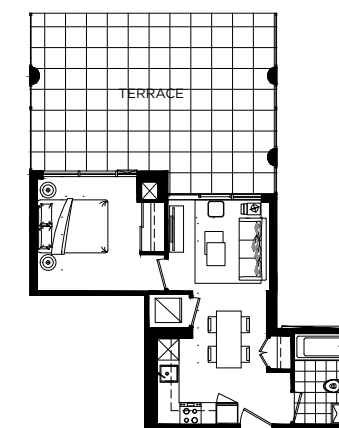
FLOOR 10-32



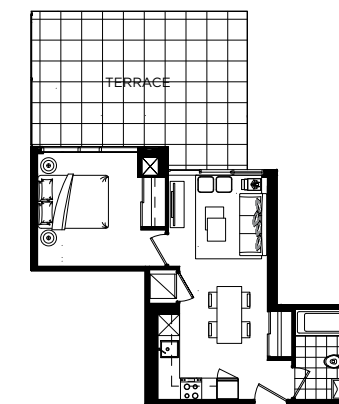
All dimensions, specifications and drawings are approximate. Plans may be mirror image. Furniture not included. Actual square footage may vary from the stated floor plan. E. & O. E. 6-10-2016



FLOOR 9, 10-32



FLOOR 2



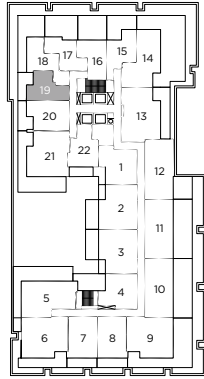
FLOOR 8

Clark

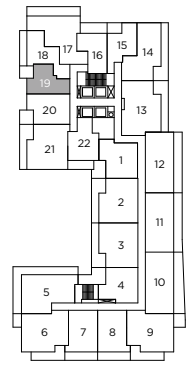
ONE BEDROOM 487 SQ. FT.

Maple

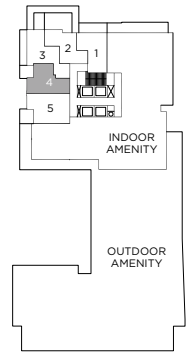
ONE BEDROOM 495 SQ. FT.



FLOOR 2



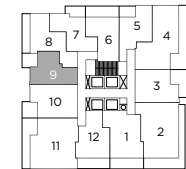
FLOOR 3-7



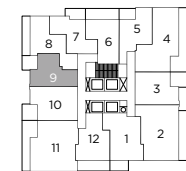
INDOOR AMENITY

OUTDOOR AMENITY

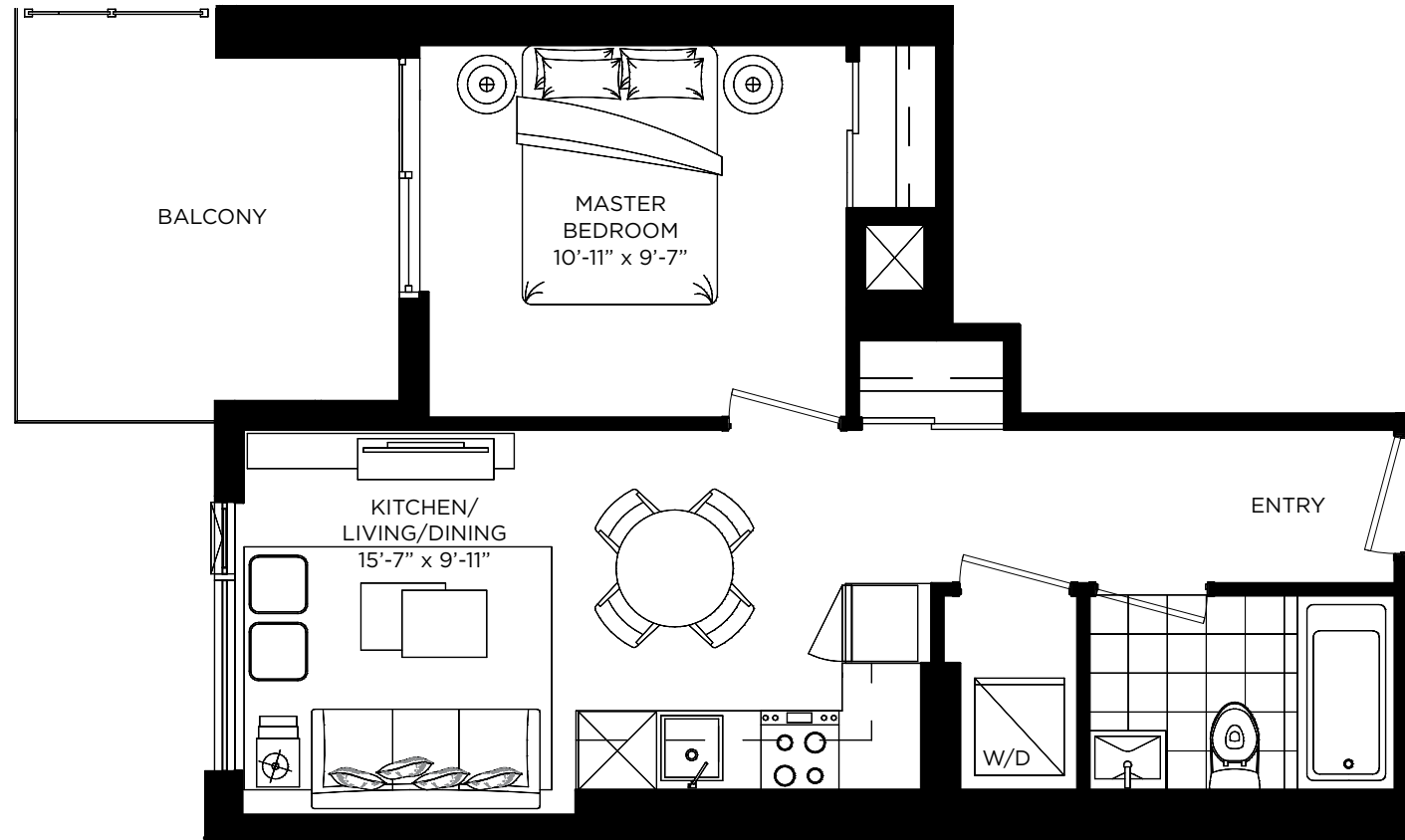
FLOOR 8



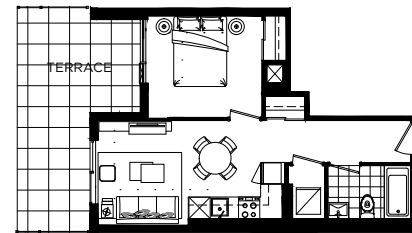
FLOOR 9



FLOOR 10-32

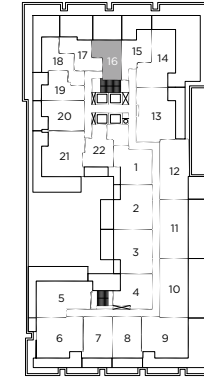


FLOOR 3-7, 8, 9, 10-32

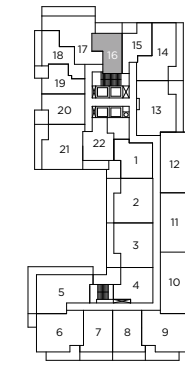


FLOOR 2

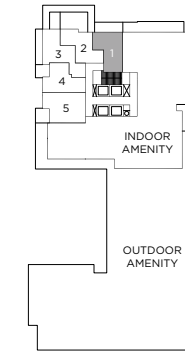
All dimensions, specifications and drawings are approximate. Plans may be mirror image. Furniture not included. Actual square footage may vary from the stated floor plan. E. & O. E. 6-10-2016



FLOOR 2



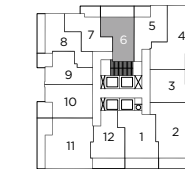
FLOOR 3-7



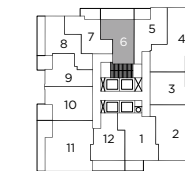
INDOOR AMENITY

OUTDOOR AMENITY

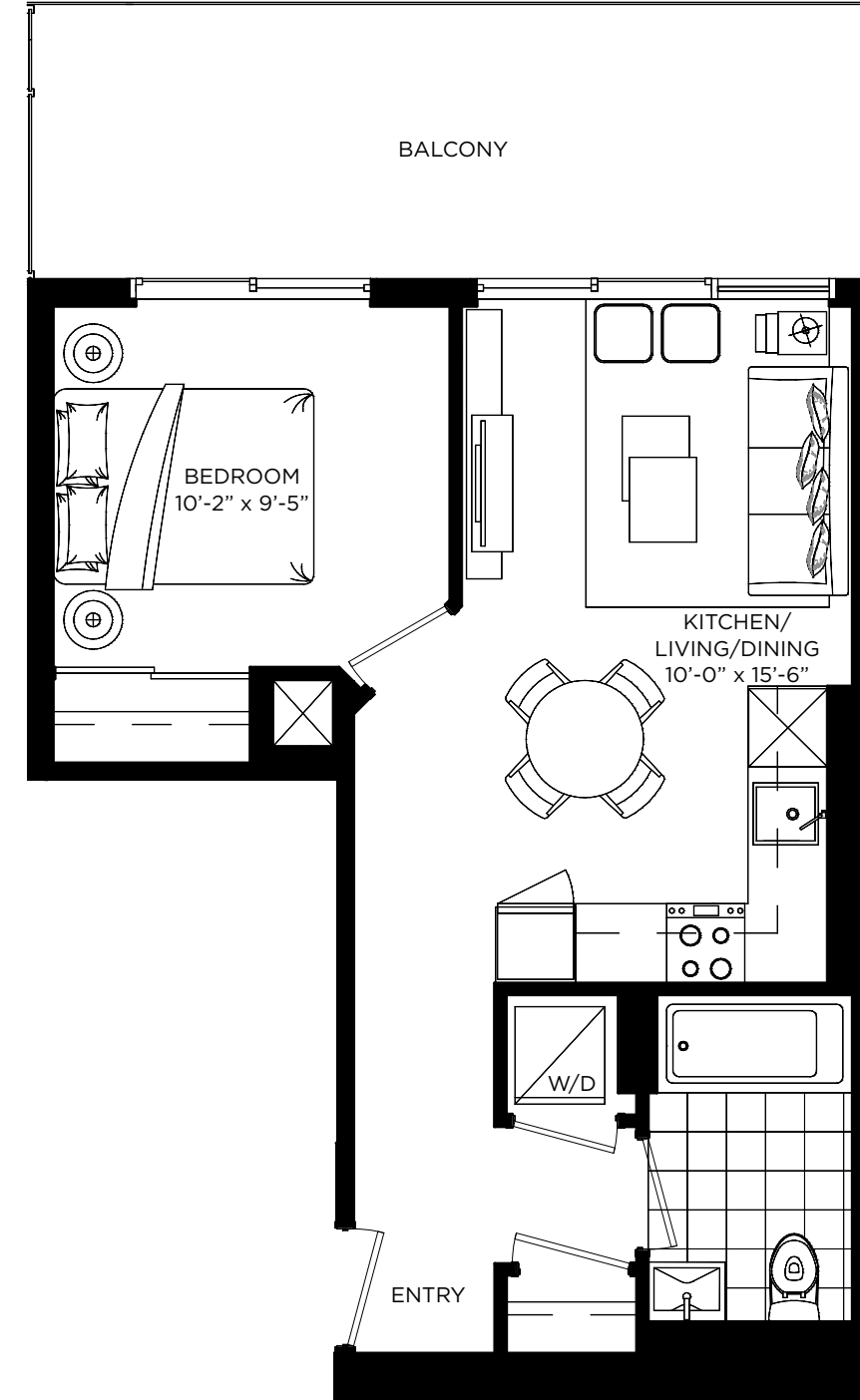
FLOOR 8



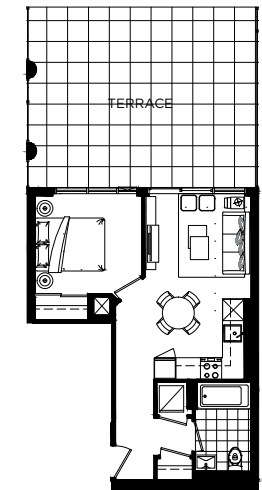
FLOOR 9



FLOOR 10-32



FLOOR 3-7, 8, 9, 10-32

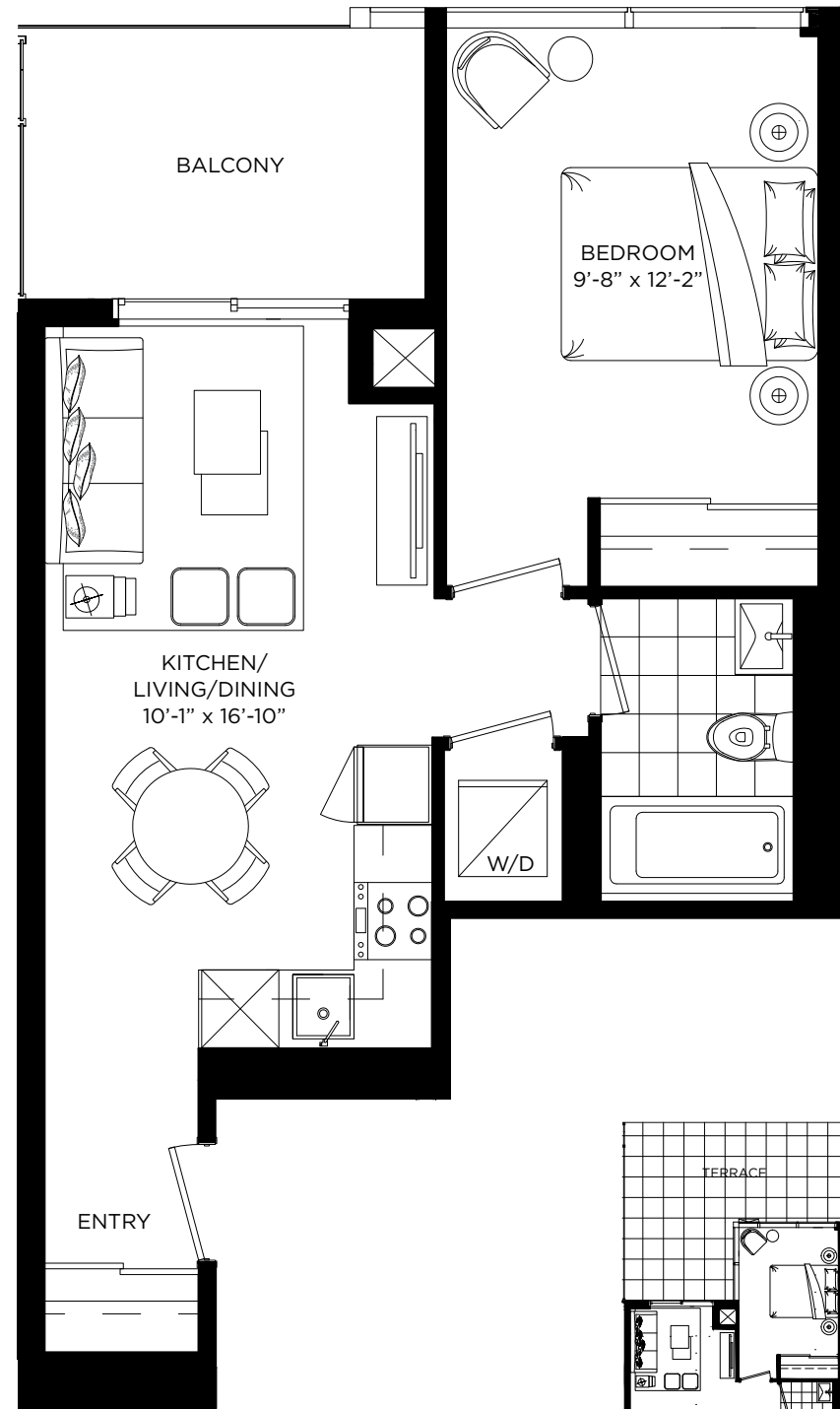


FLOOR 2

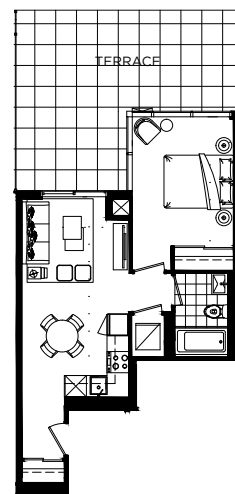
All dimensions, specifications and drawings are approximate. Plans may be mirror image. Furniture not included. Actual square footage may vary from the stated floor plan. E. & O. E. 6-10-2016

Palm

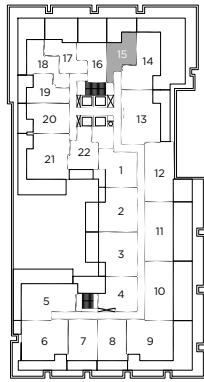
ONE BEDROOM 513 SQ. FT.



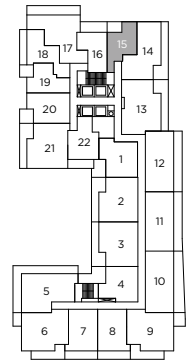
FLOOR 3-7, 9, 10-32



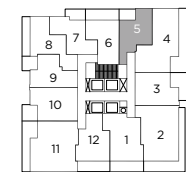
FLOOR 2



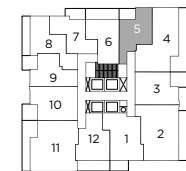
FLOOR 2



FLOOR 3-7



FLOOR 9



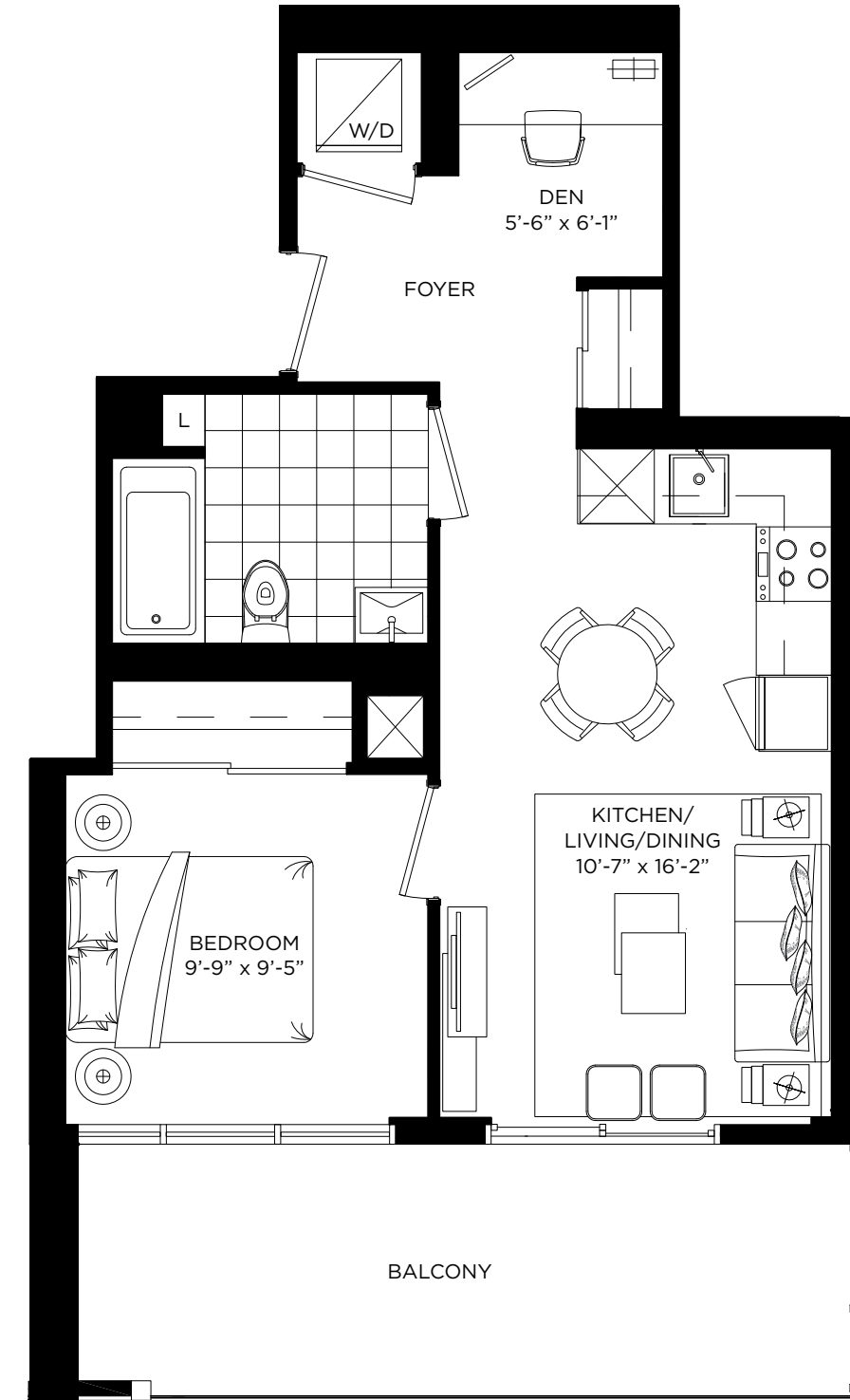
FLOOR 10-32



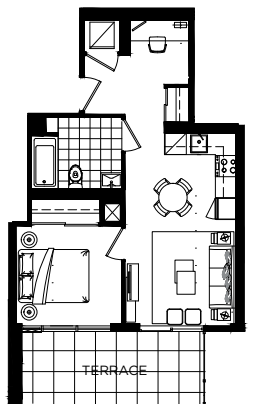
All dimensions, specifications and drawings are approximate. Plans may be mirror image. Furniture not included. Actual square footage may vary from the stated floor plan. E. & O. E. 6-10-2016

Melrose

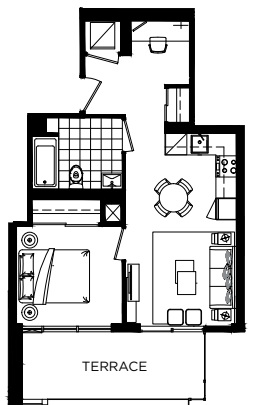
ONE BEDROOM + DEN 539 SQ. FT.



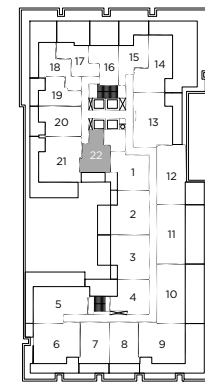
FLOOR 3-7, 9, 10-32



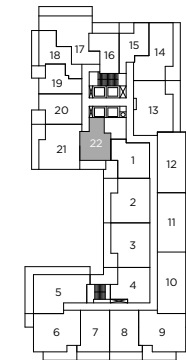
FLOOR 2



FLOOR 3-7



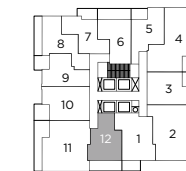
FLOOR 2



FLOOR 3-7



FLOOR 9



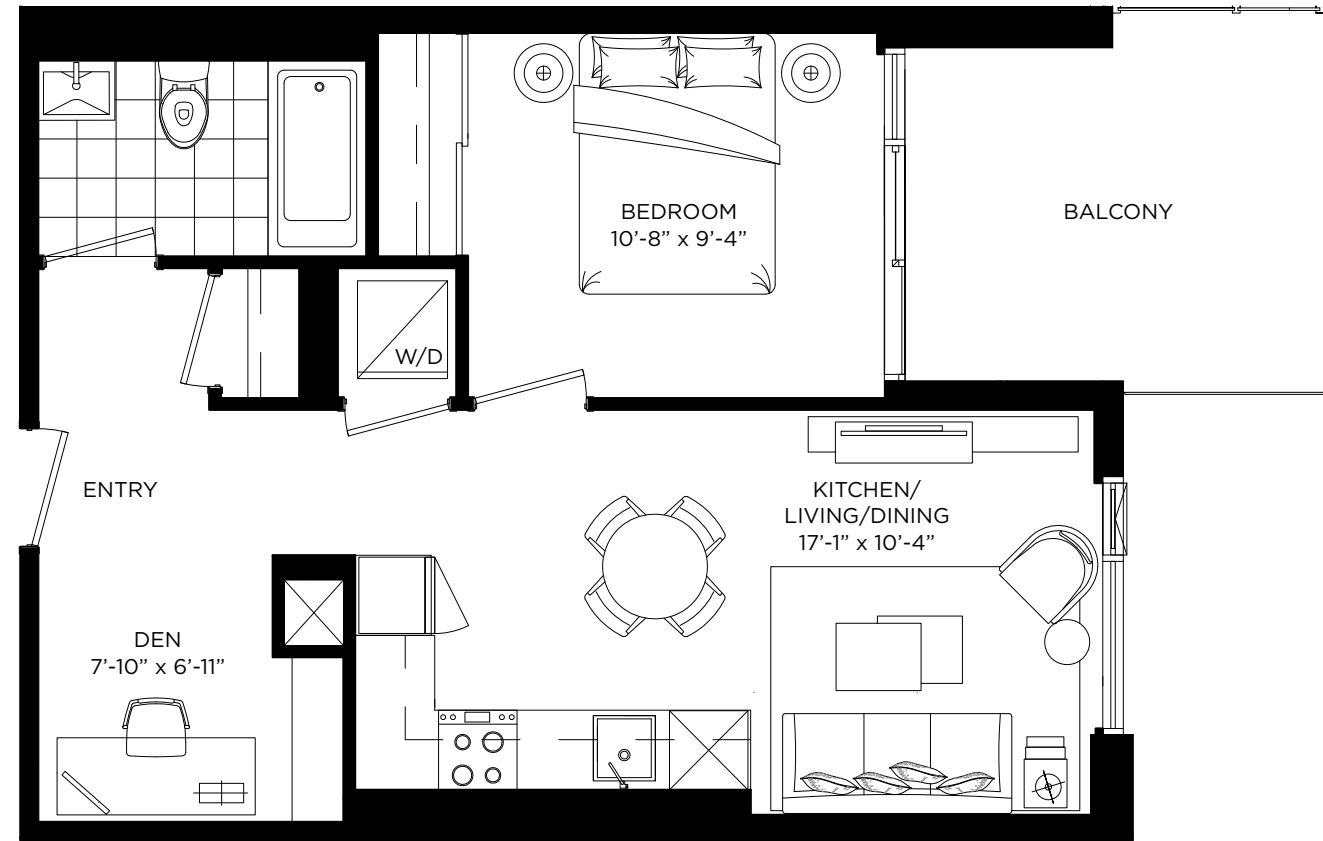
FLOOR 10-32



All dimensions, specifications and drawings are approximate. Plans may be mirror image. Furniture not included. Actual square footage may vary from the stated floor plan. E. & O. E. 6-10-2016

Linden

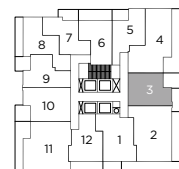
ONE BEDROOM + DEN 543 SQ. FT.



FLOOR 10-32



FLOOR 9



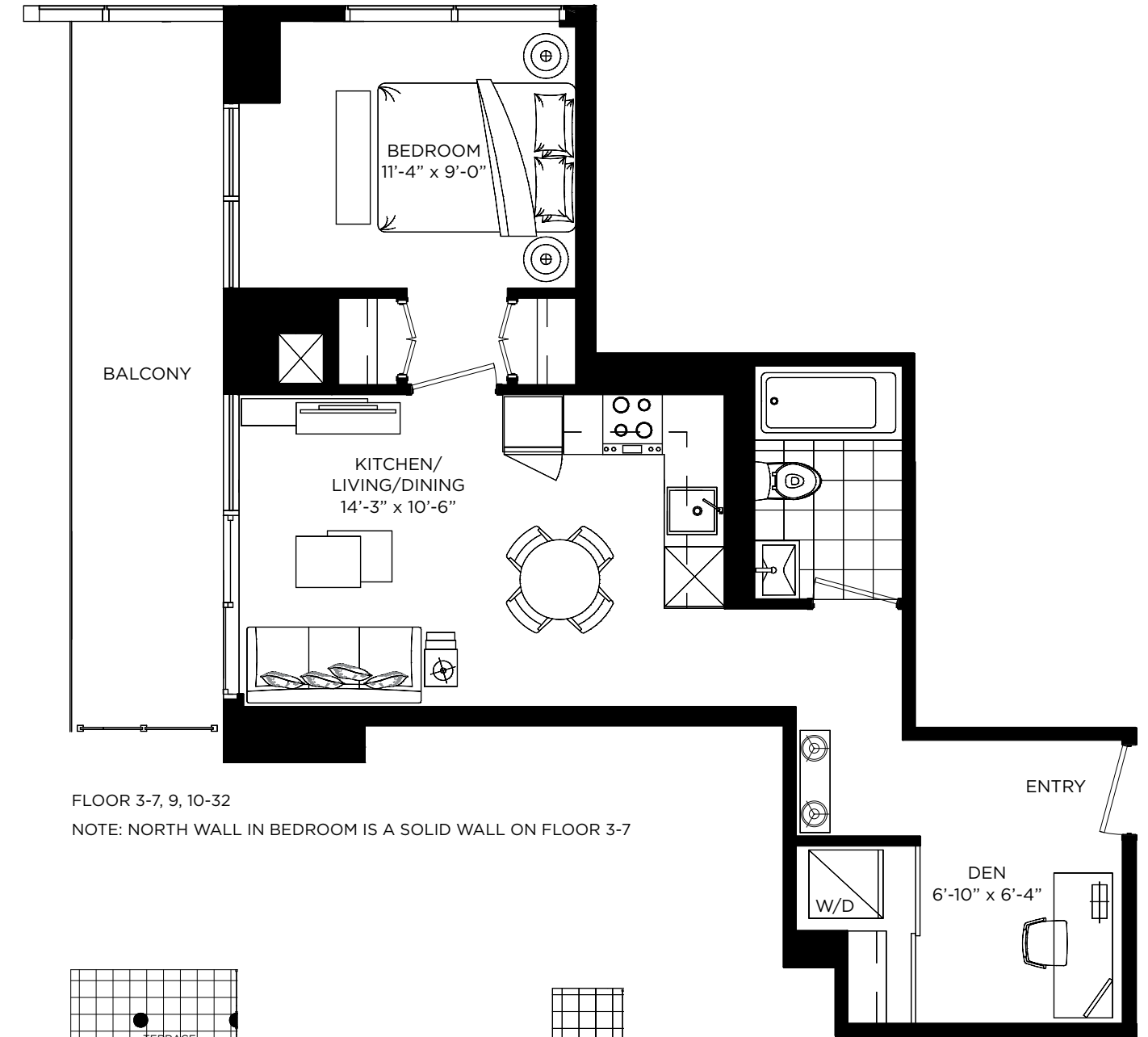
FLOOR 10-32



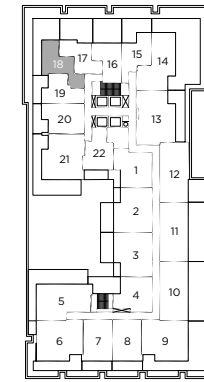
All dimensions, specifications and drawings are approximate. Plans may be mirror image. Furniture not included. Actual square footage may vary from the stated floor plan. E. & O. E. 6-10-2016

Sunset

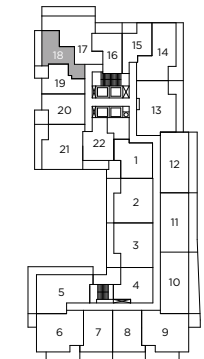
ONE BEDROOM + DEN 557 SQ. FT.



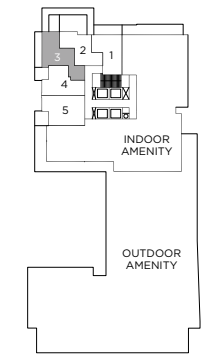
FLOOR 3-7, 9, 10-32
NOTE: NORTH WALL IN BEDROOM IS A SOLID WALL ON FLOOR 3-7



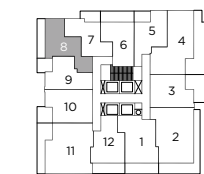
FLOOR 2



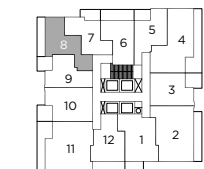
FLOOR 3-7



FLOOR 8



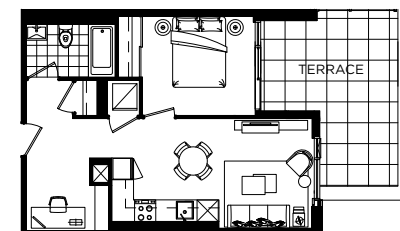
FLOOR 9



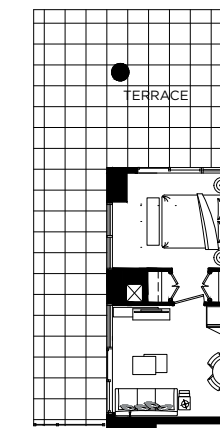
FLOOR 10-32



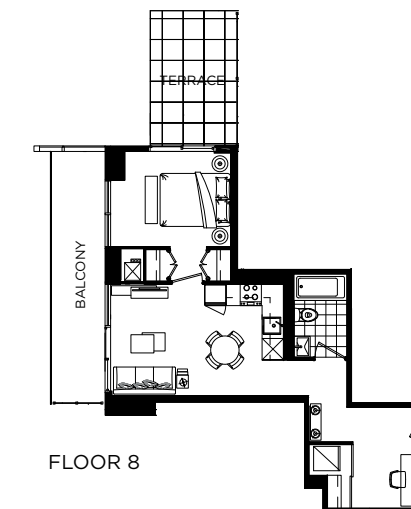
All dimensions, specifications and drawings are approximate. Plans may be mirror image. Furniture not included. Actual square footage may vary from the stated floor plan. E. & O. E. 6-10-2016



FLOOR 9



FLOOR 2



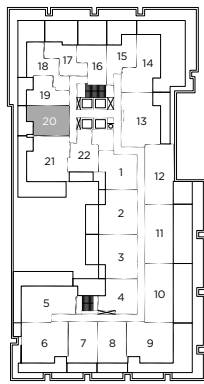
FLOOR 8

Alexis

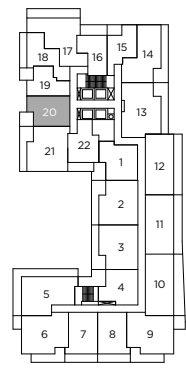
ONE BEDROOM + DEN 617 SQ. FT.

Laurel

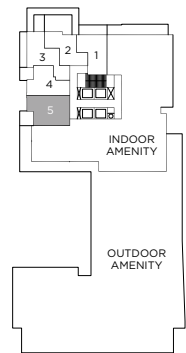
ONE BEDROOM + DEN 617 SQ. FT.



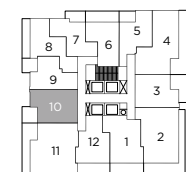
FLOOR 2



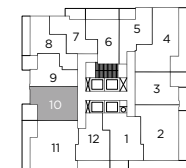
FLOOR 3-7



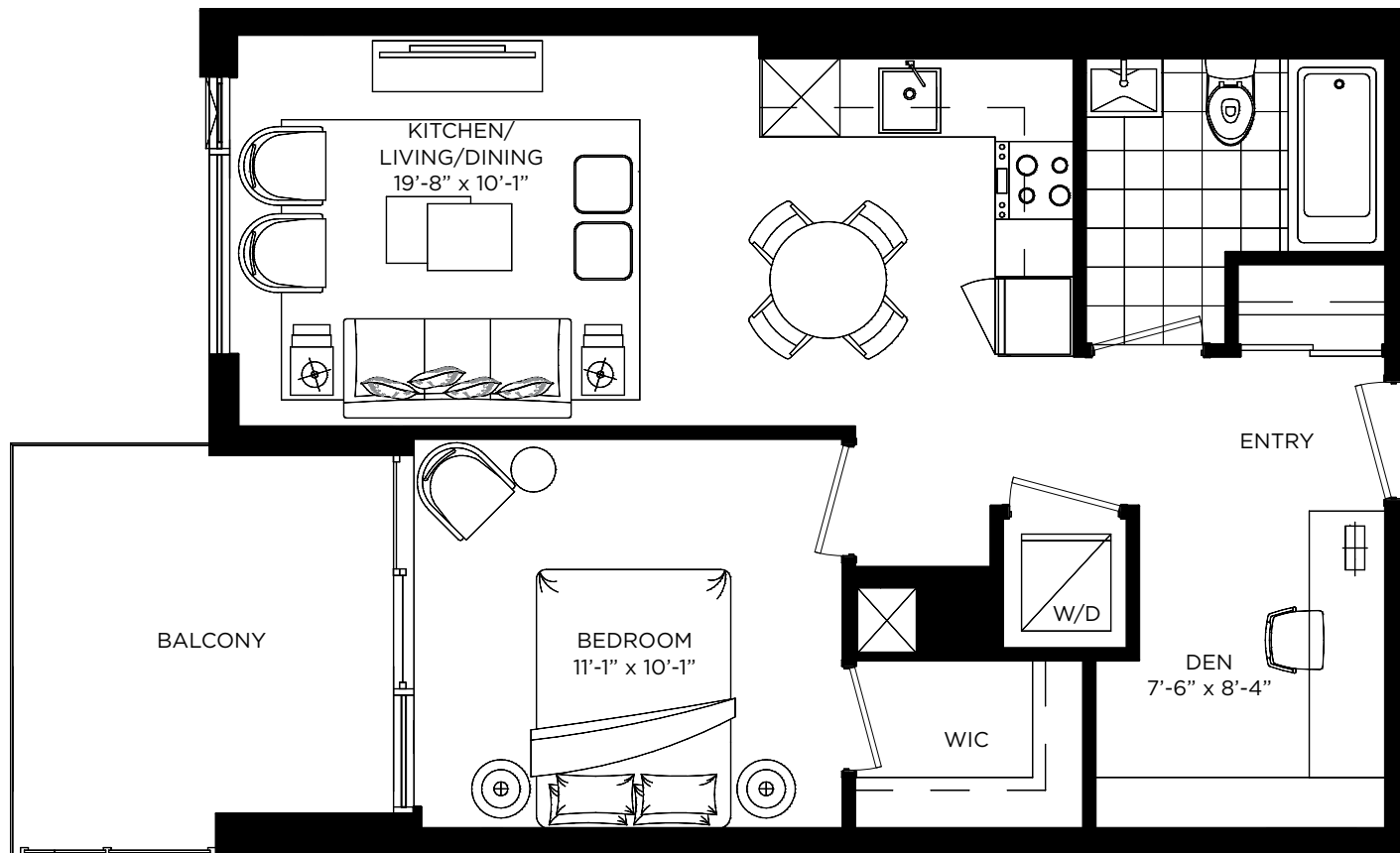
FLOOR 8



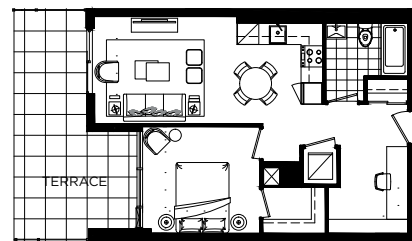
FLOOR 9



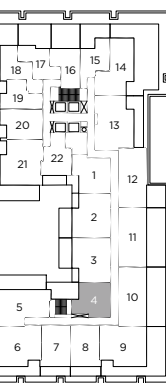
FLOOR 10-32



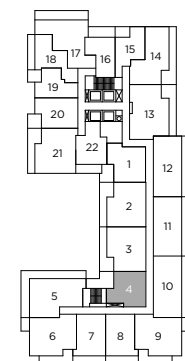
FLOOR 3-7, 8, 9, 10-32



FLOOR 2



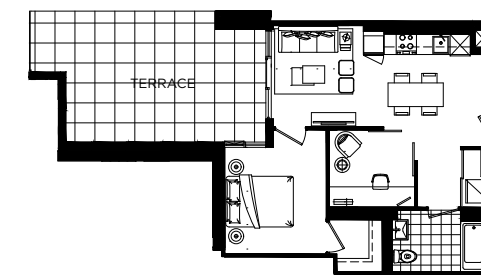
FLOOR 2



FLOOR 3-7



FLOOR 3-7



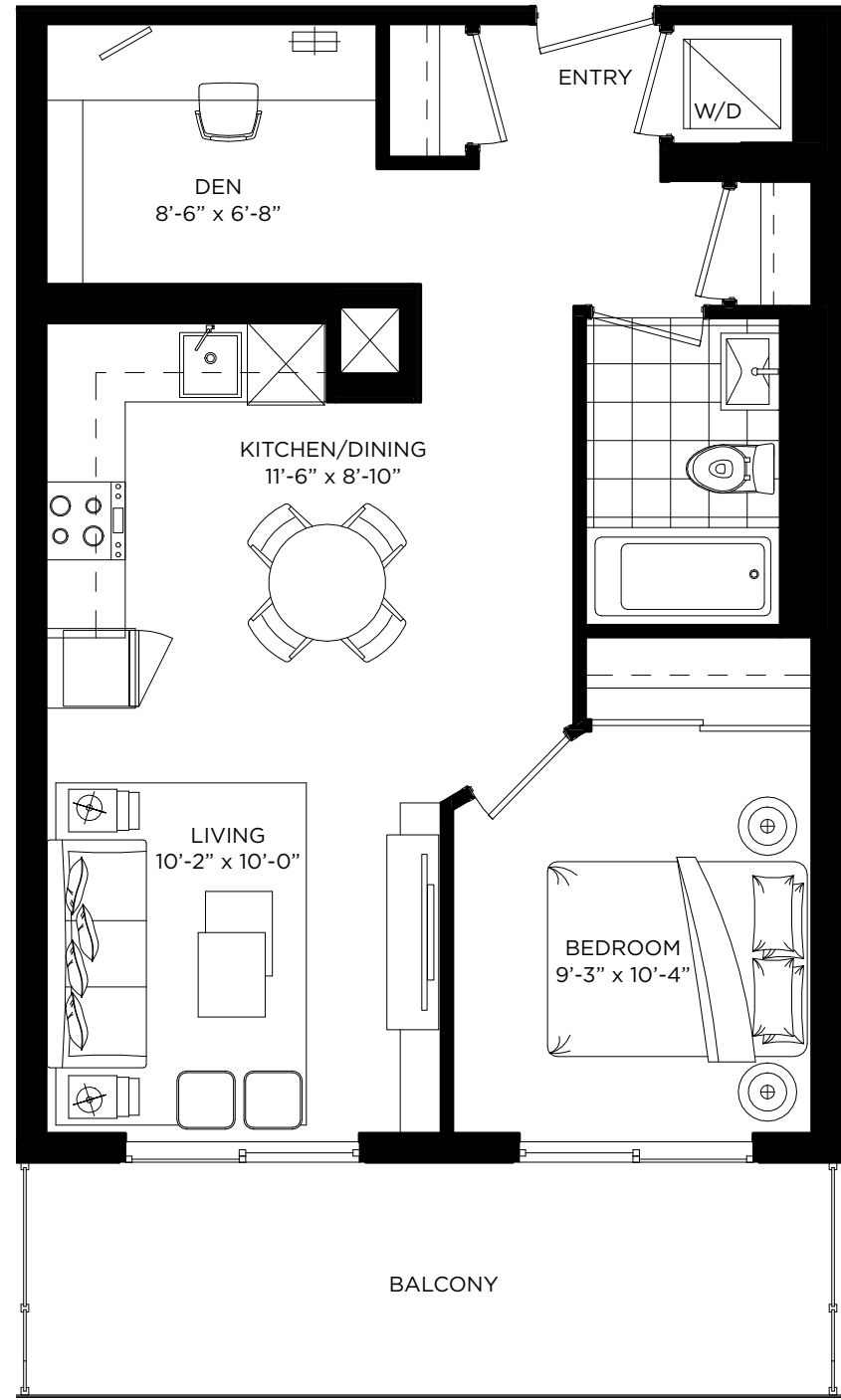
FLOOR 2

Dayton

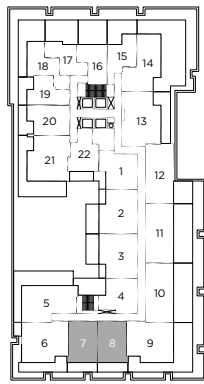
ONE BEDROOM + DEN 621 SQ. FT.

Haynes

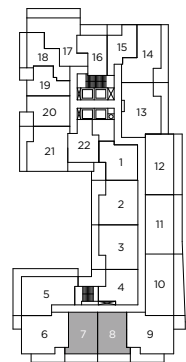
ONE BEDROOM + DEN 662 SQ. FT.



FLOOR 3-7



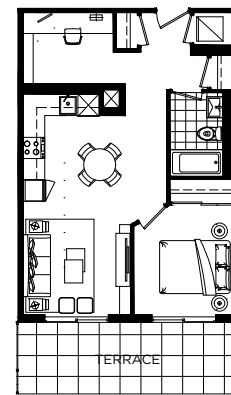
FLOOR 2



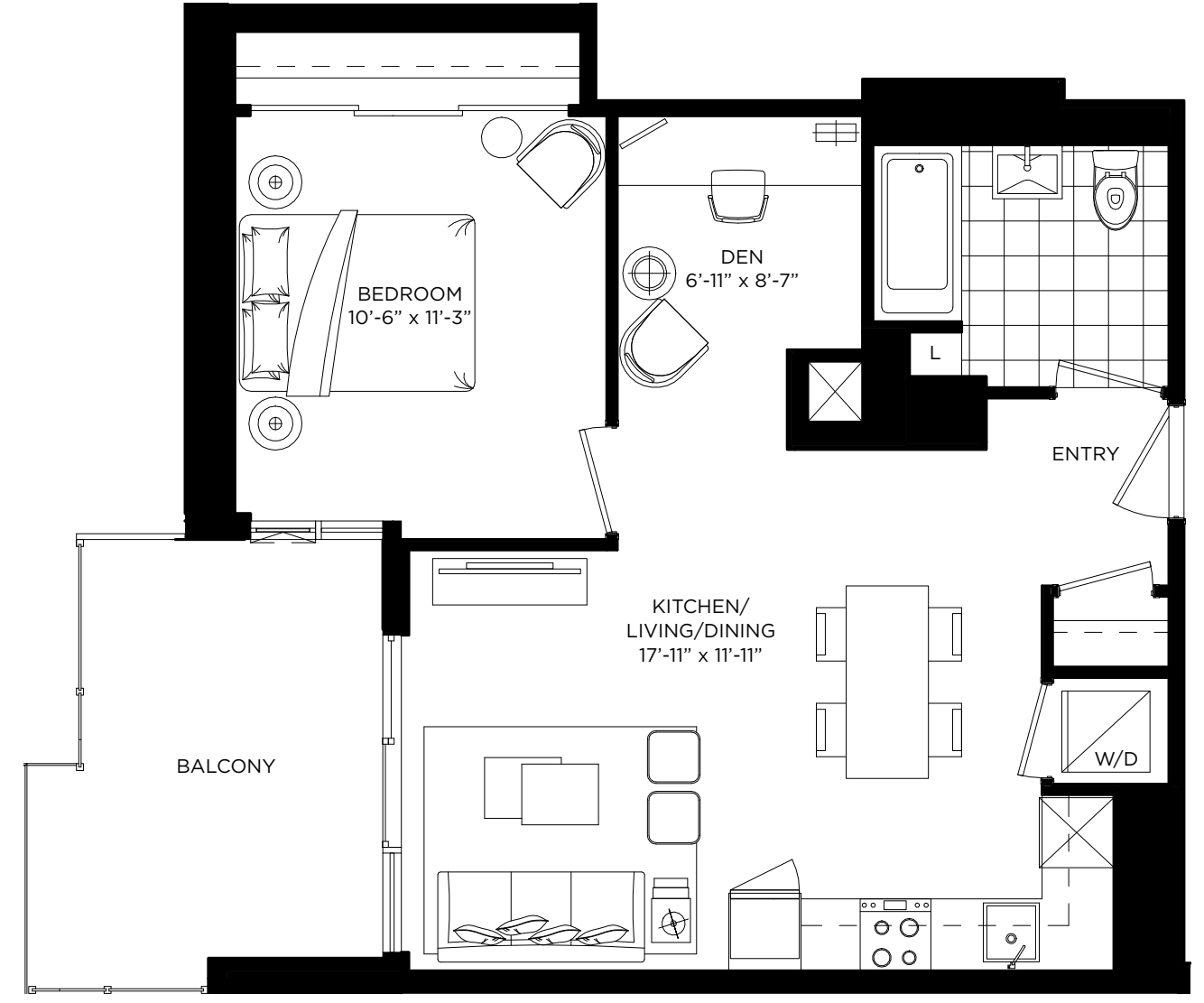
FLOOR 3-7



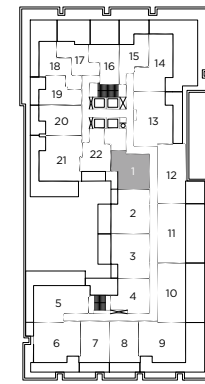
All dimensions, specifications and drawings are approximate. Plans may be mirror image. Furniture not included. Actual square footage may vary from the stated floor plan. E. & O. E. 6-10-2016



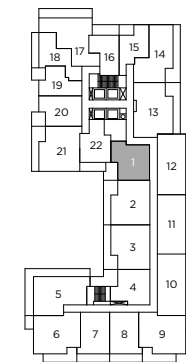
FLOOR 2



FLOOR 3-7



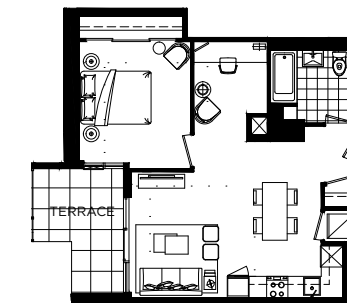
FLOOR 2



FLOOR 3-7



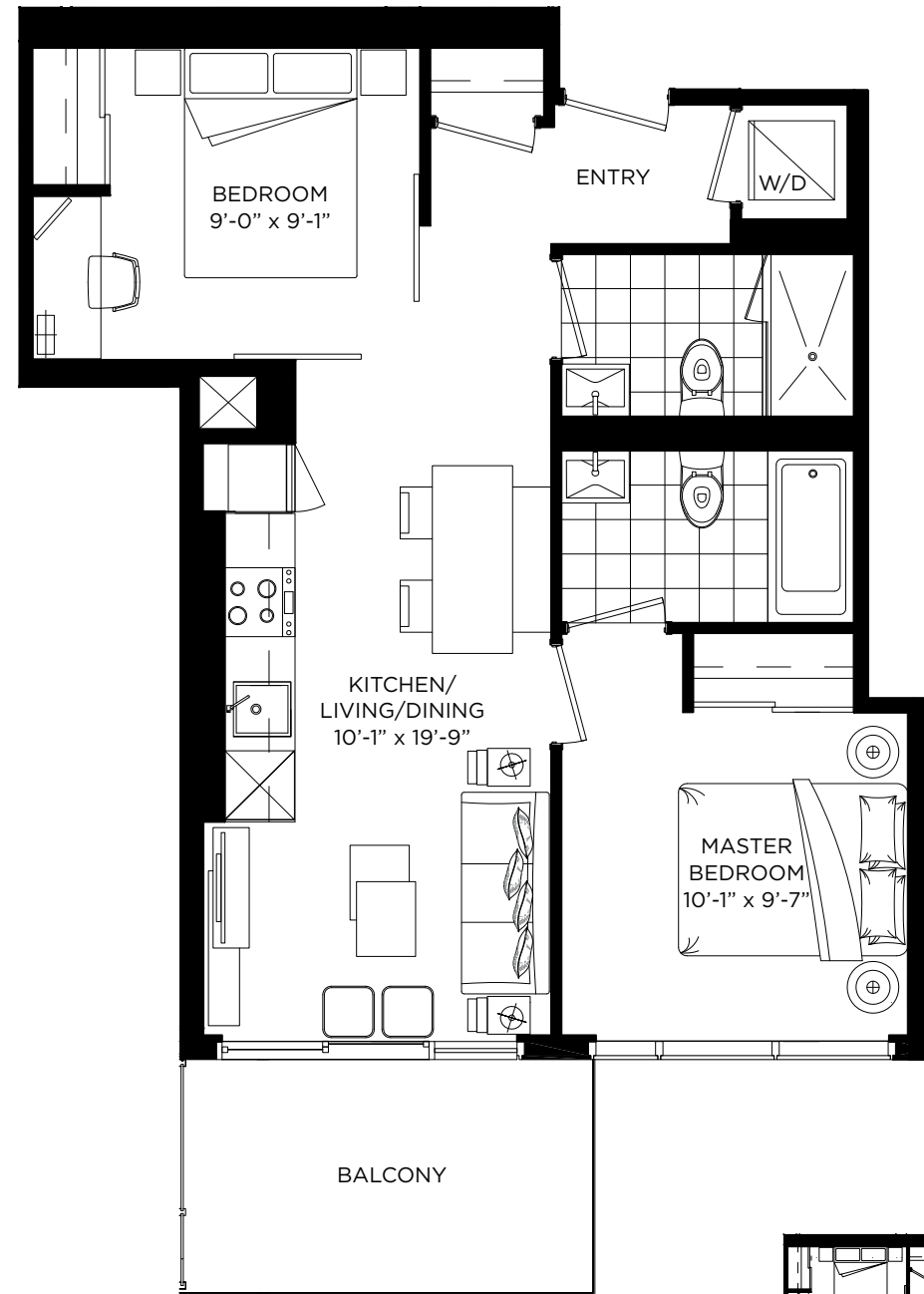
All dimensions, specifications and drawings are approximate. Plans may be mirror image. Furniture not included. Actual square footage may vary from the stated floor plan. E. & O. E. 6-10-2016



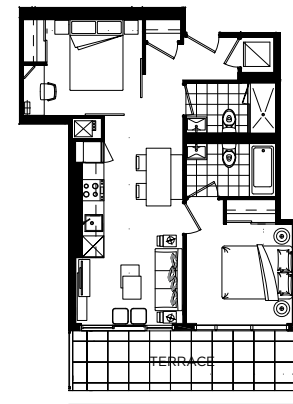
FLOOR 2

Beverley

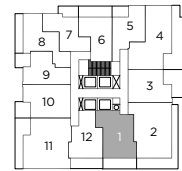
TWO BEDROOM 656 SQ. FT.



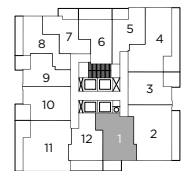
FLOOR 10-32



FLOOR 9



FLOOR 9



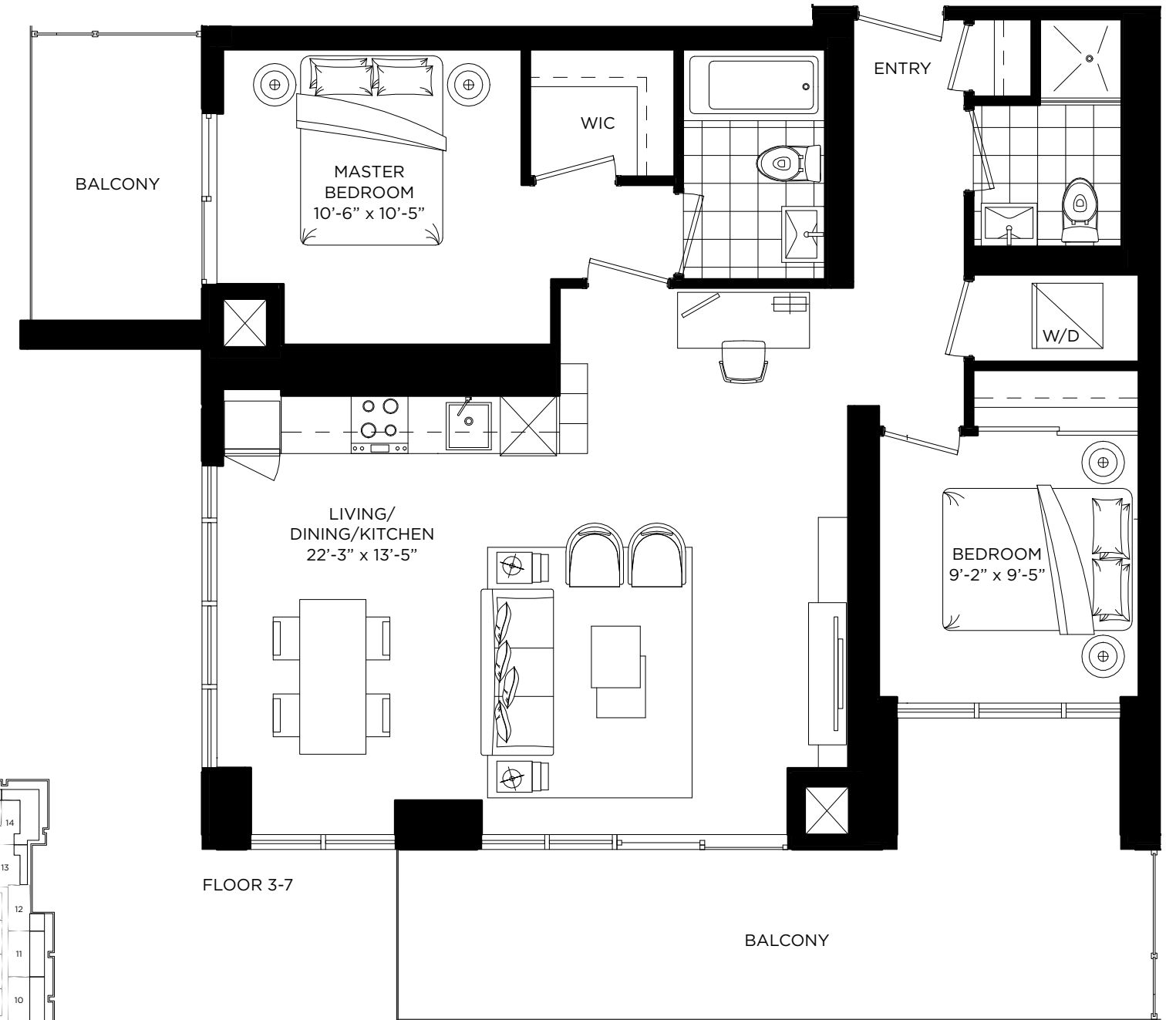
FLOOR 10-32



All dimensions, specifications and drawings are approximate. Plans may be mirror image. Furniture not included. Actual square footage may vary from the stated floor plan. E. & O. E. 6-10-2016

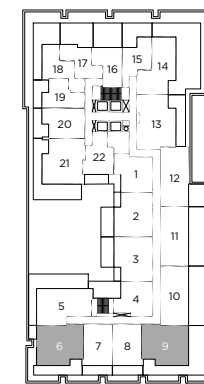
Bedford

TWO BEDROOM 931 SQ. FT.

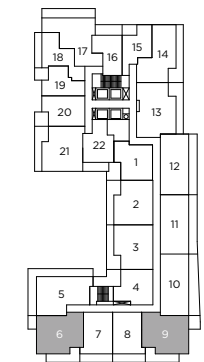


FLOOR 3-7

BALCONY



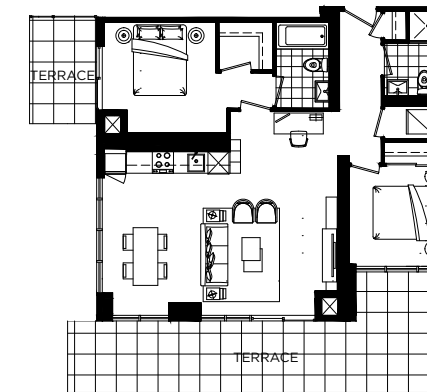
FLOOR 2



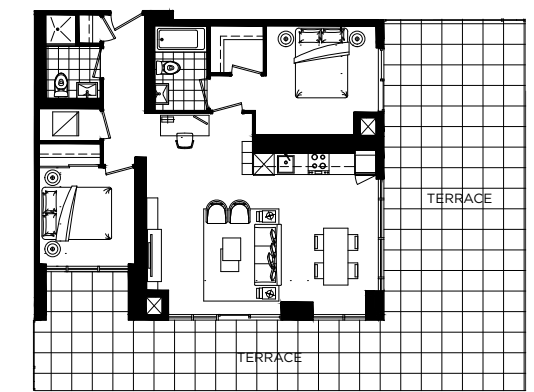
FLOOR 3-7



All dimensions, specifications and drawings are approximate. Plans may be mirror image. Furniture not included. Actual square footage may vary from the stated floor plan. E. & O. E. 6-10-2016



FLOOR 2 UNIT 6



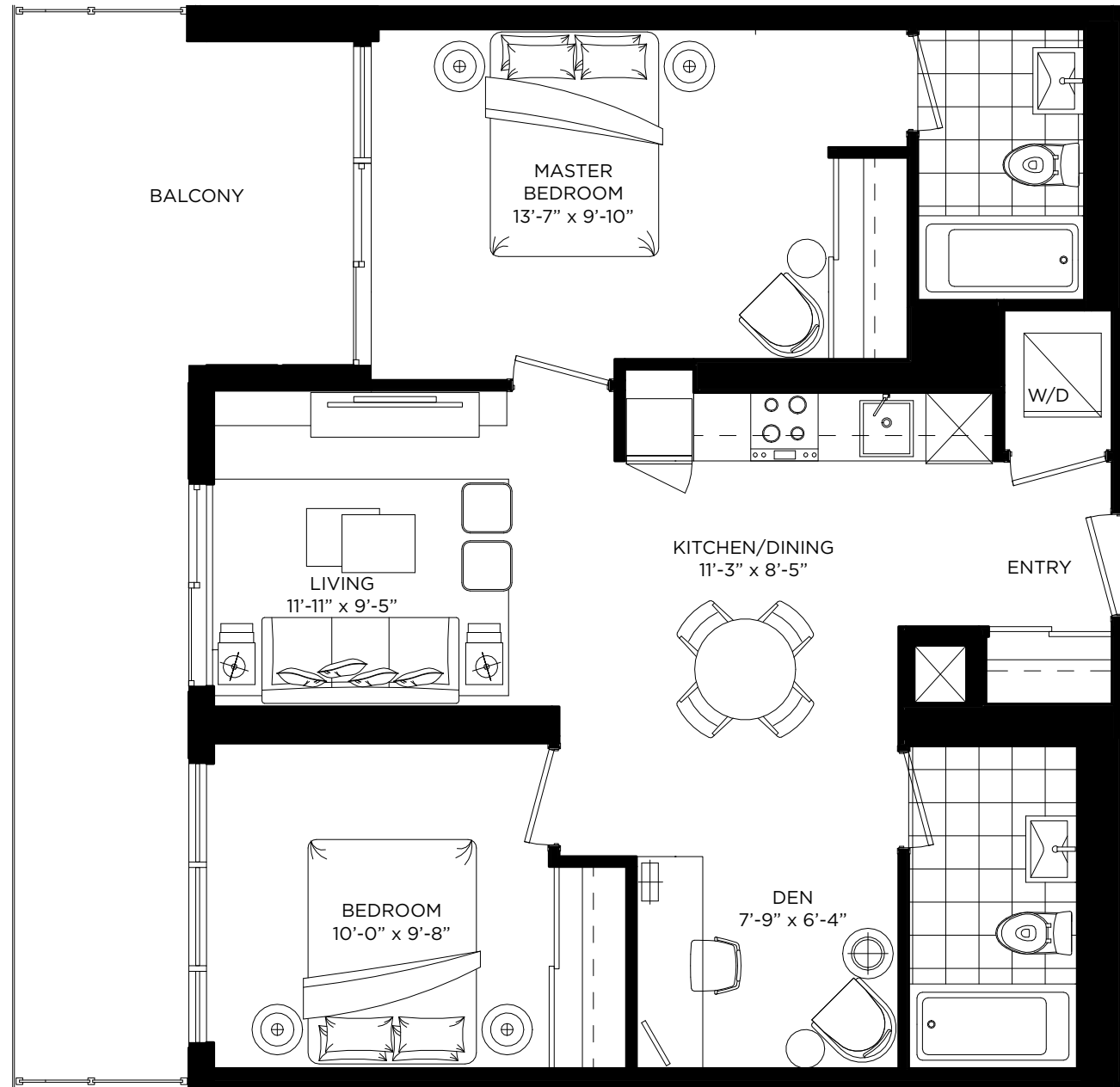
FLOOR 2 UNIT 9

Wetherly

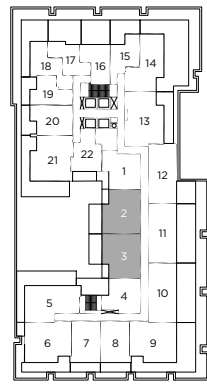
TWO BEDROOM + DEN 834 SQ. FT.

Wilshire

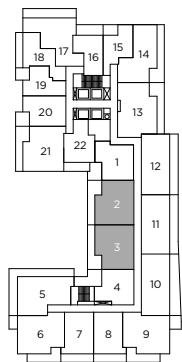
TWO BEDROOM + DEN 844 SQ. FT.



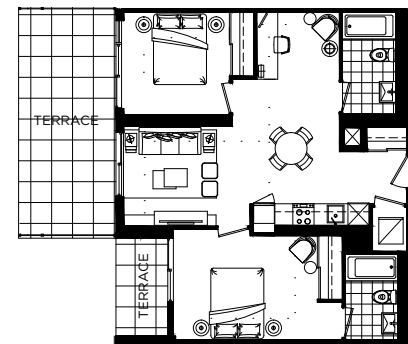
FLOOR 3-7



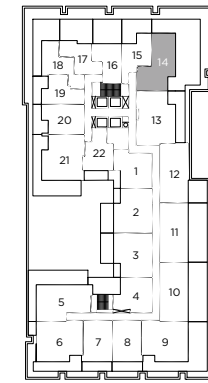
FLOOR 2



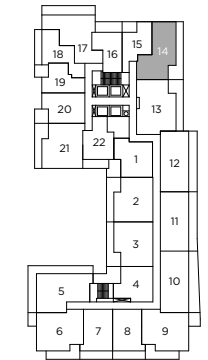
FLOOR 3-7



FLOOR 2



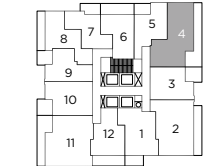
FLOOR 2



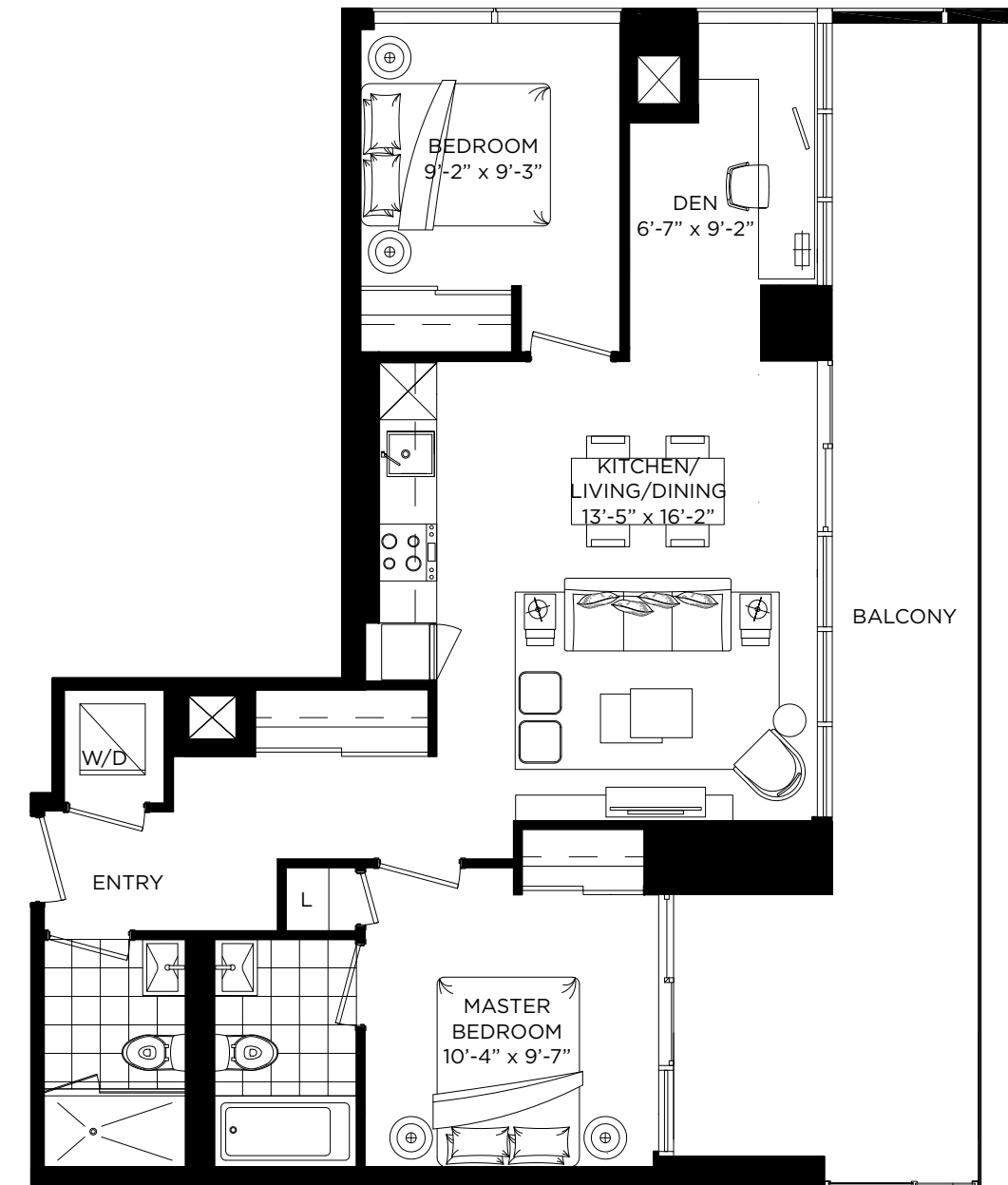
FLOOR 3-7



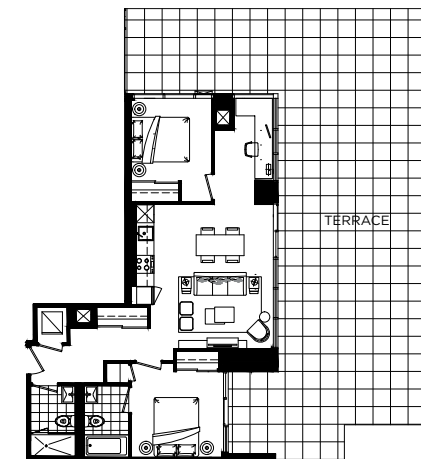
FLOOR 9



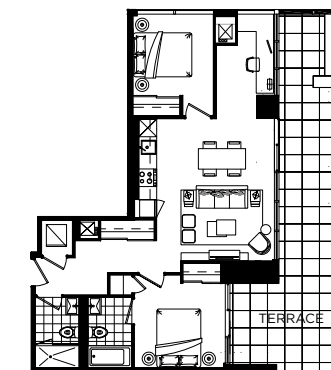
FLOOR 10-32



FLOOR 3-7, 10-32



FLOOR 2



FLOOR 9

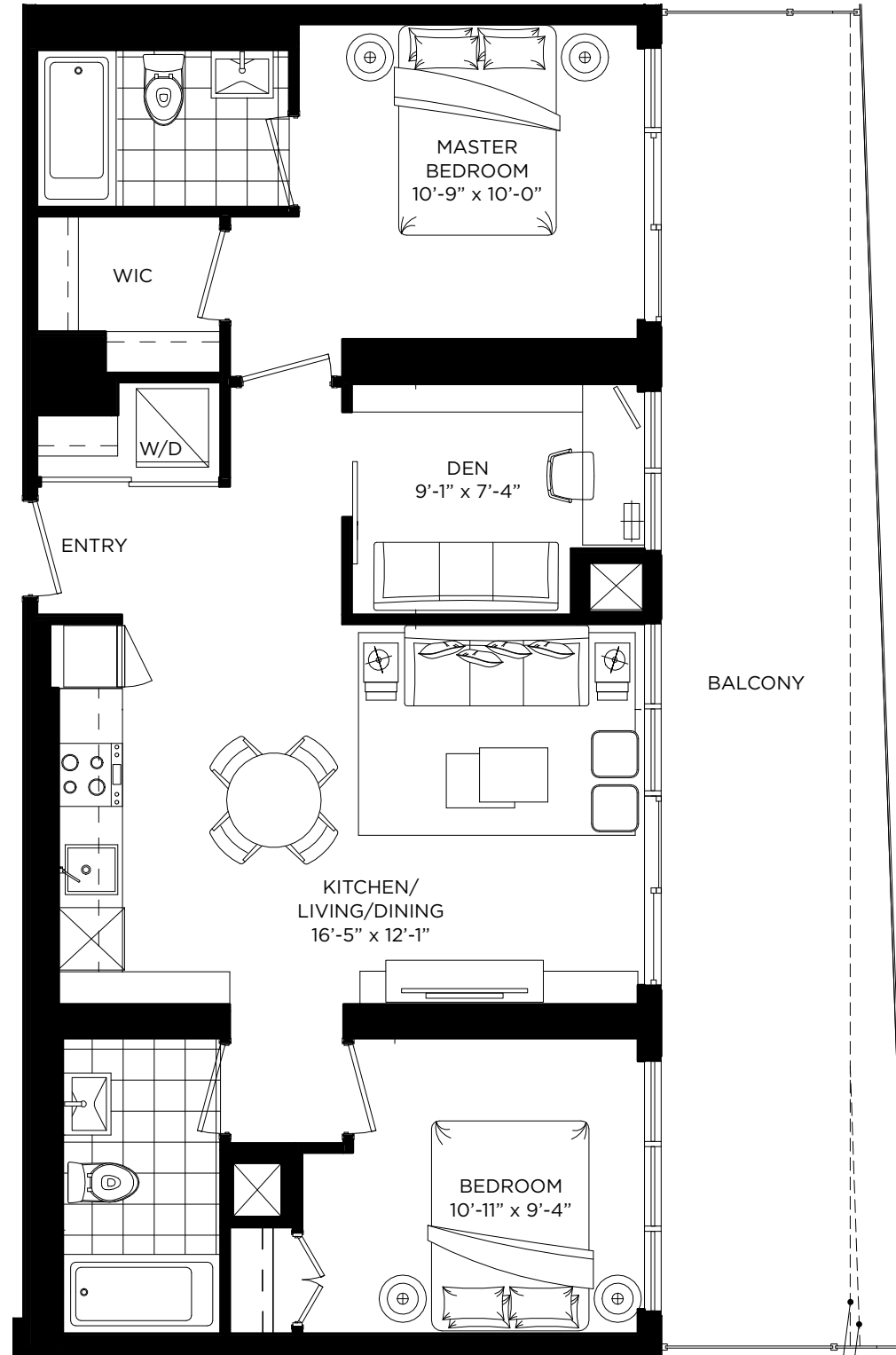


Rodeo

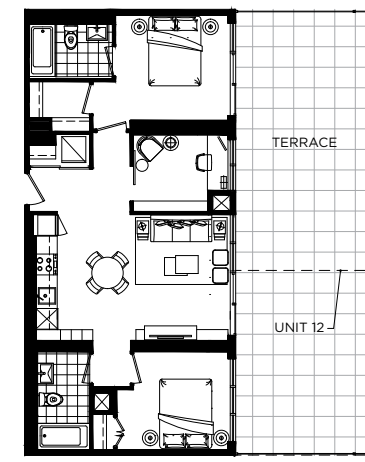
TWO BEDROOM + DEN 857 SQ. FT.

Roxbury

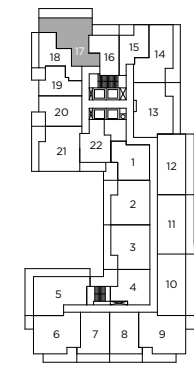
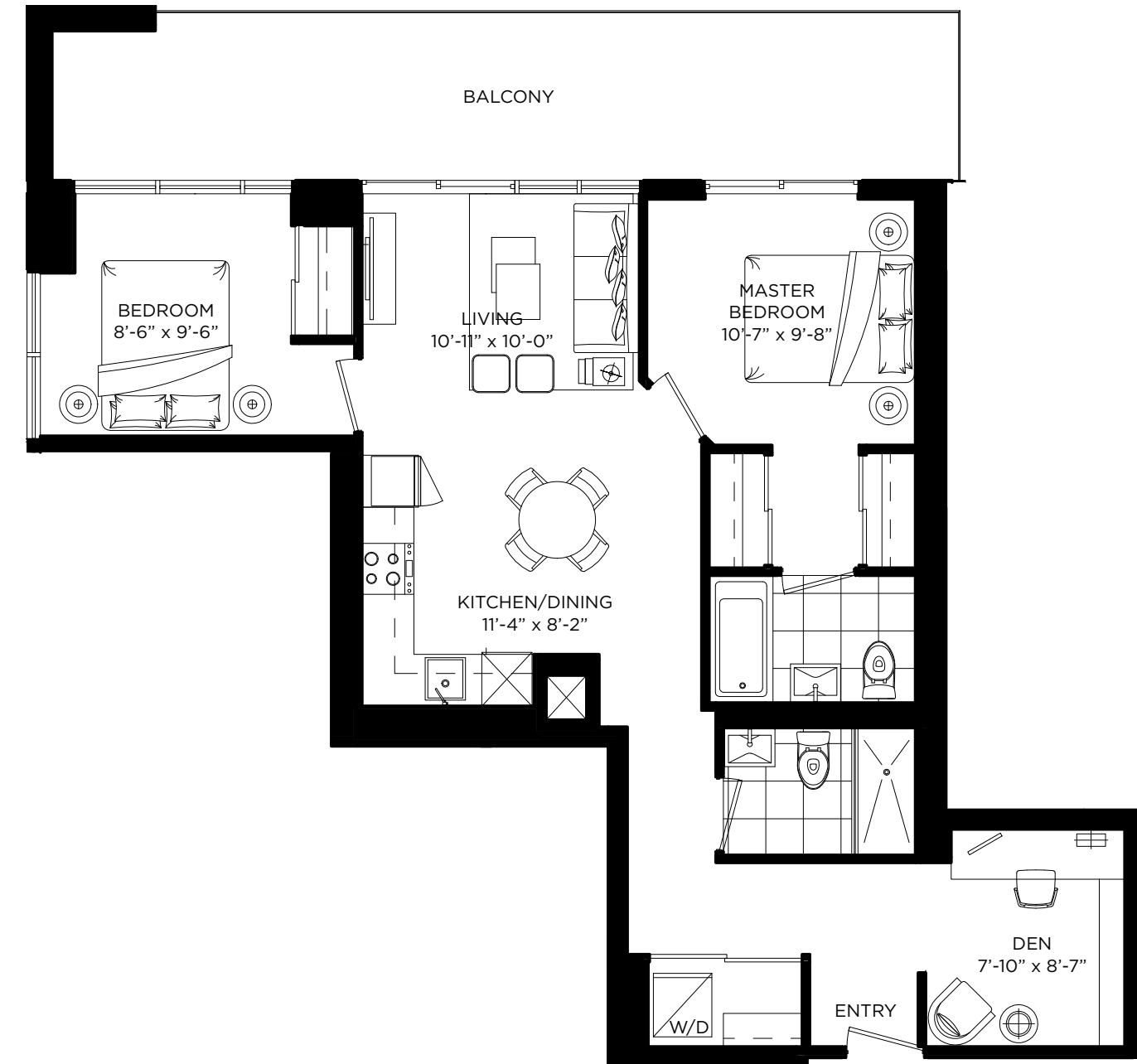
TWO BEDROOM + DEN 881 SQ. FT.



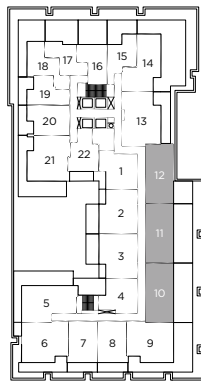
FLOOR 3-7 UNIT 10



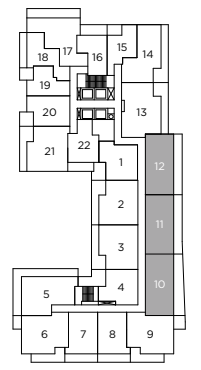
FLOOR 2 UNIT 10/11



FLOOR 3-7



FLOOR 2



FLOOR 3-7



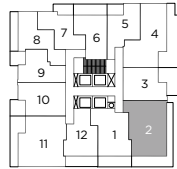
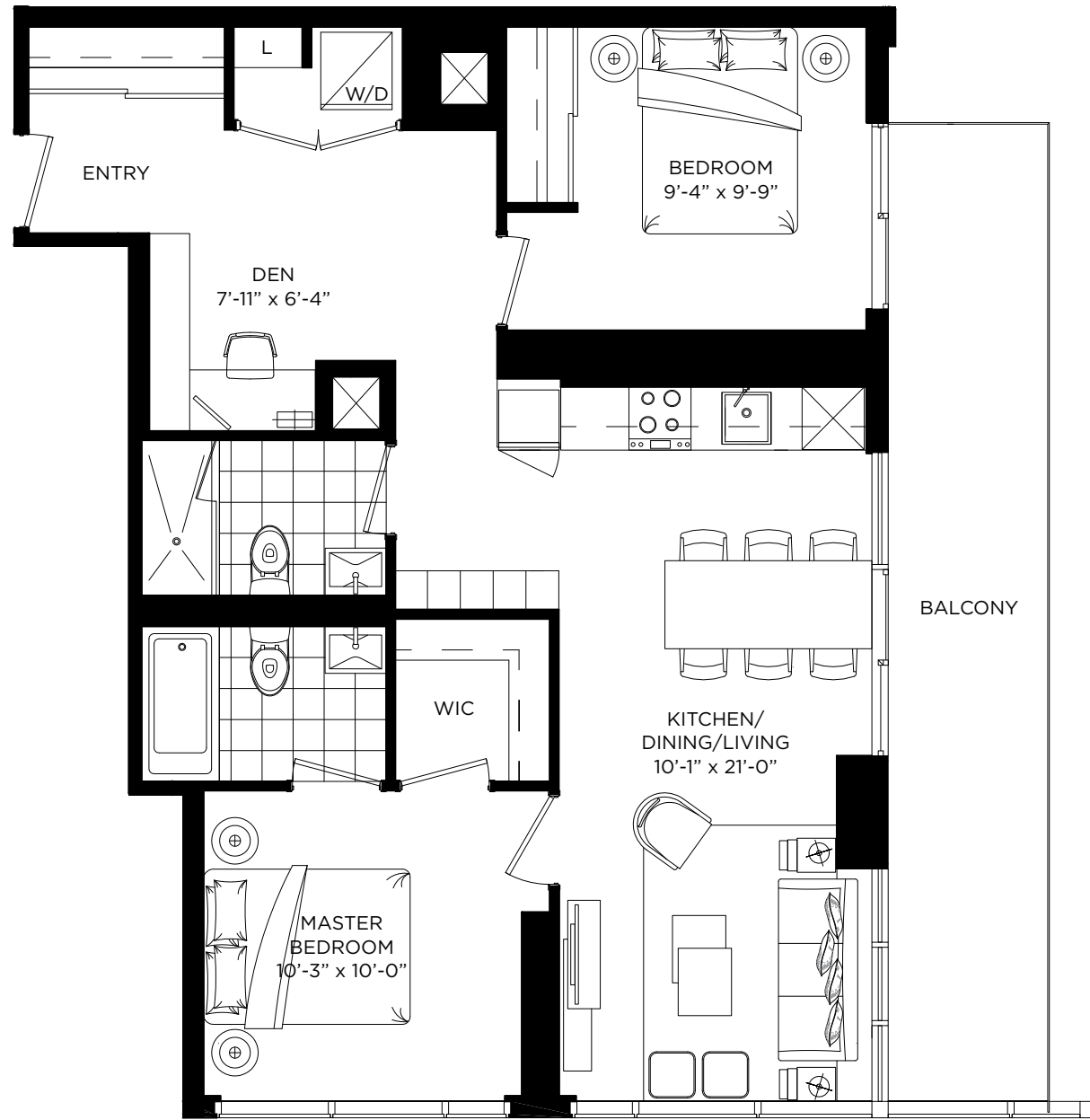
All dimensions, specifications and drawings are approximate. Plans may be mirror image. Furniture not included. Actual square footage may vary from the stated floor plan. E. & O. E. 6-10-2016



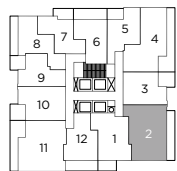
All dimensions, specifications and drawings are approximate. Plans may be mirror image. Furniture not included. Actual square footage may vary from the stated floor plan. E. & O. E. 6-10-2016

Lexington

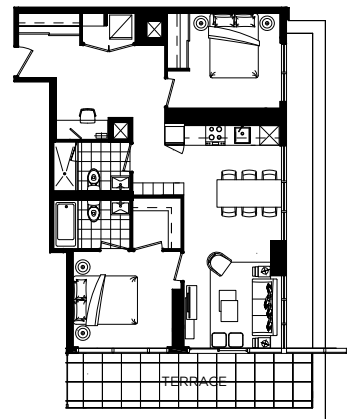
TWO BEDROOM + DEN 883 SQ. FT.



FLOOR 9



FLOOR 10-32



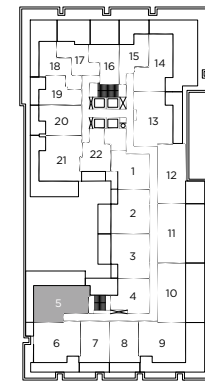
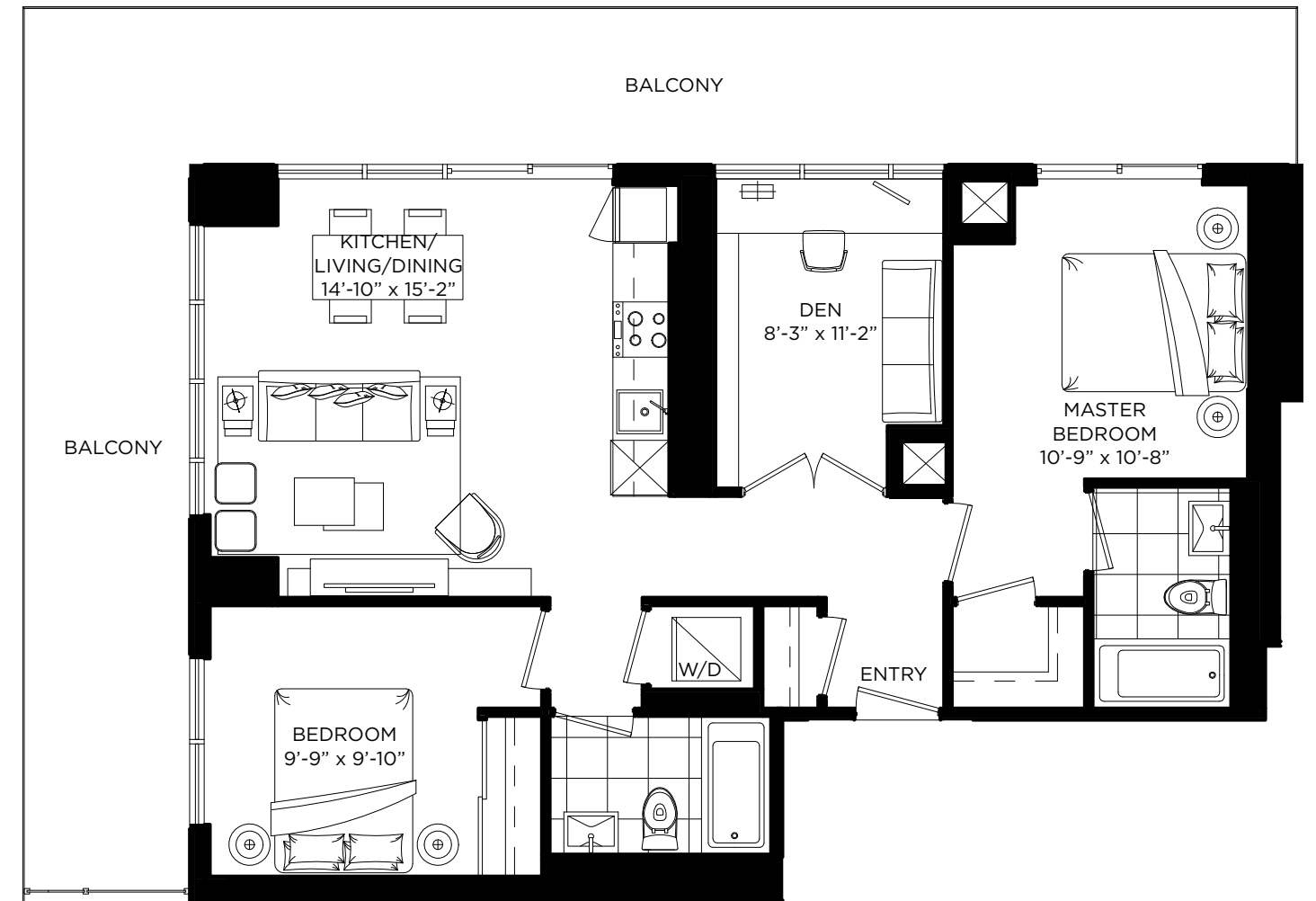
FLOOR 9



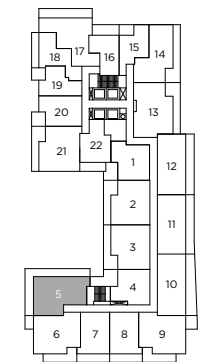
All dimensions, specifications and drawings are approximate. Plans may be mirror image. Furniture not included. Actual square footage may vary from the stated floor plan. E. & O. E. 6-10-2016

Rexford

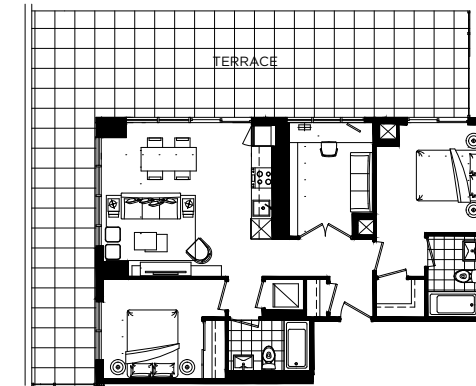
TWO BEDROOM + DEN 934 SQ. FT.



FLOOR 2



FLOOR 3-7



FLOOR 2



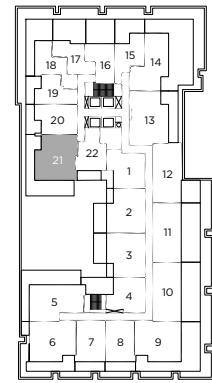
All dimensions, specifications and drawings are approximate. Plans may be mirror image. Furniture not included. Actual square footage may vary from the stated floor plan. E. & O. E. 6-10-2016

Santa Monica

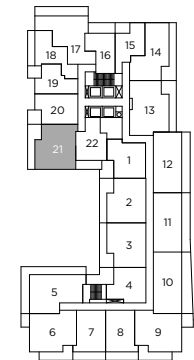
TWO BEDROOM
+ DEN 936 SQ. FT.

Hillcrest

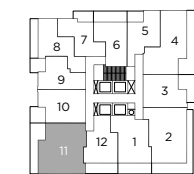
TWO BEDROOM + DEN 1013 SQ. FT.



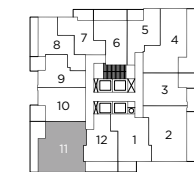
FLOOR 2



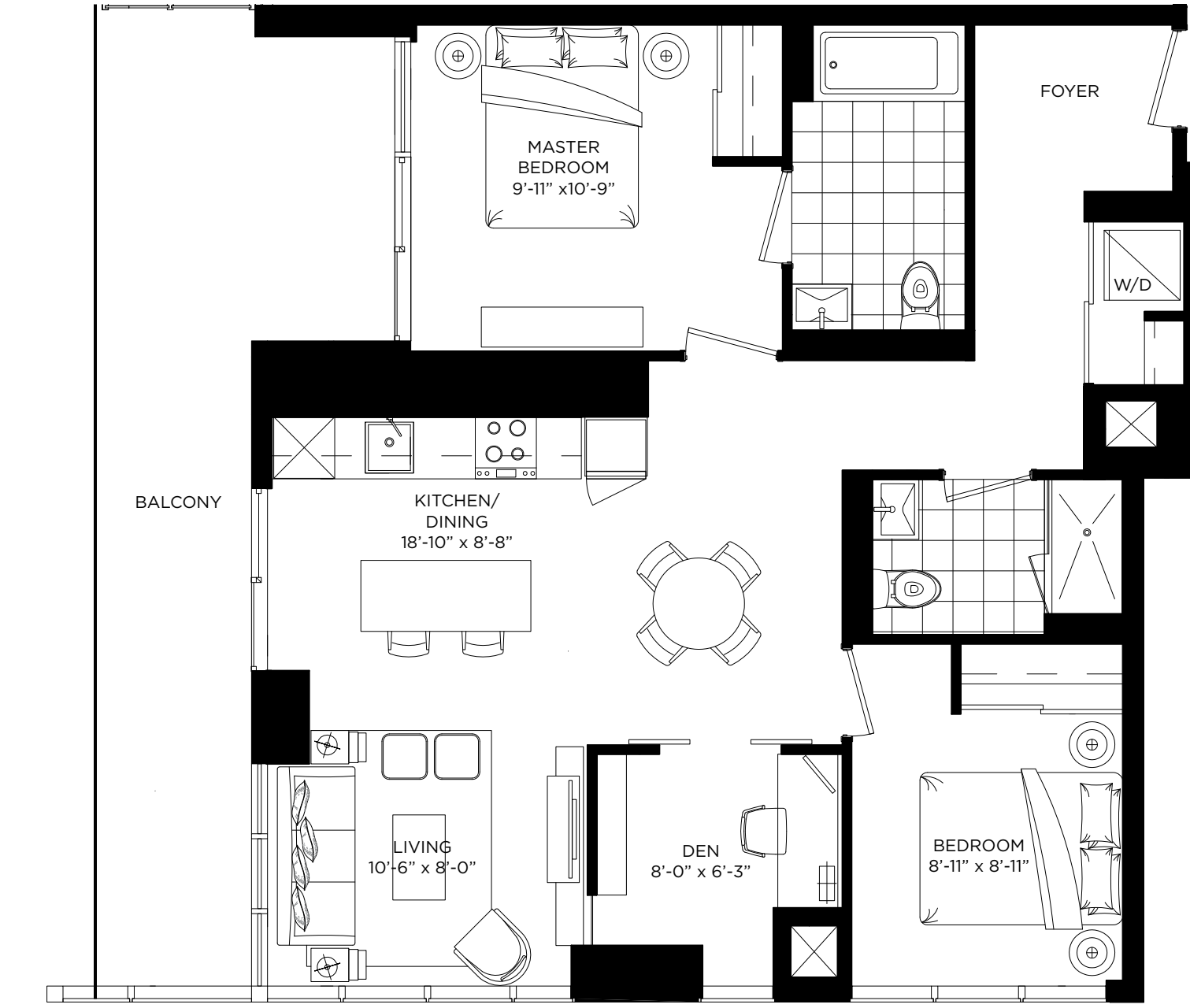
FLOOR 3-7



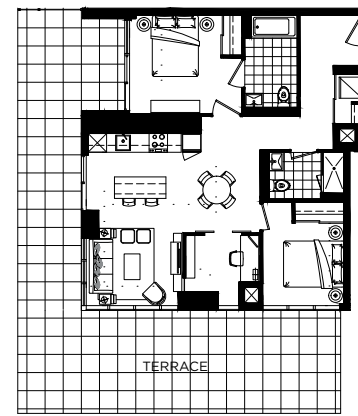
FLOOR 9



FLOOR 10-32



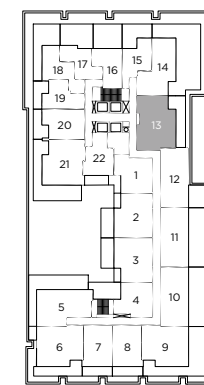
FLOOR 3-7, 9, 10-32



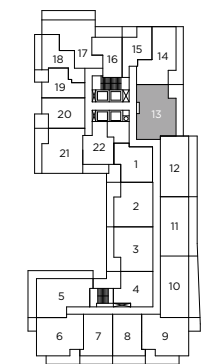
FLOOR 2



All dimensions, specifications and drawings are approximate. Plans may be mirror image. Furniture not included. Actual square footage may vary from the stated floor plan. E. & O. E. 6-10-2016



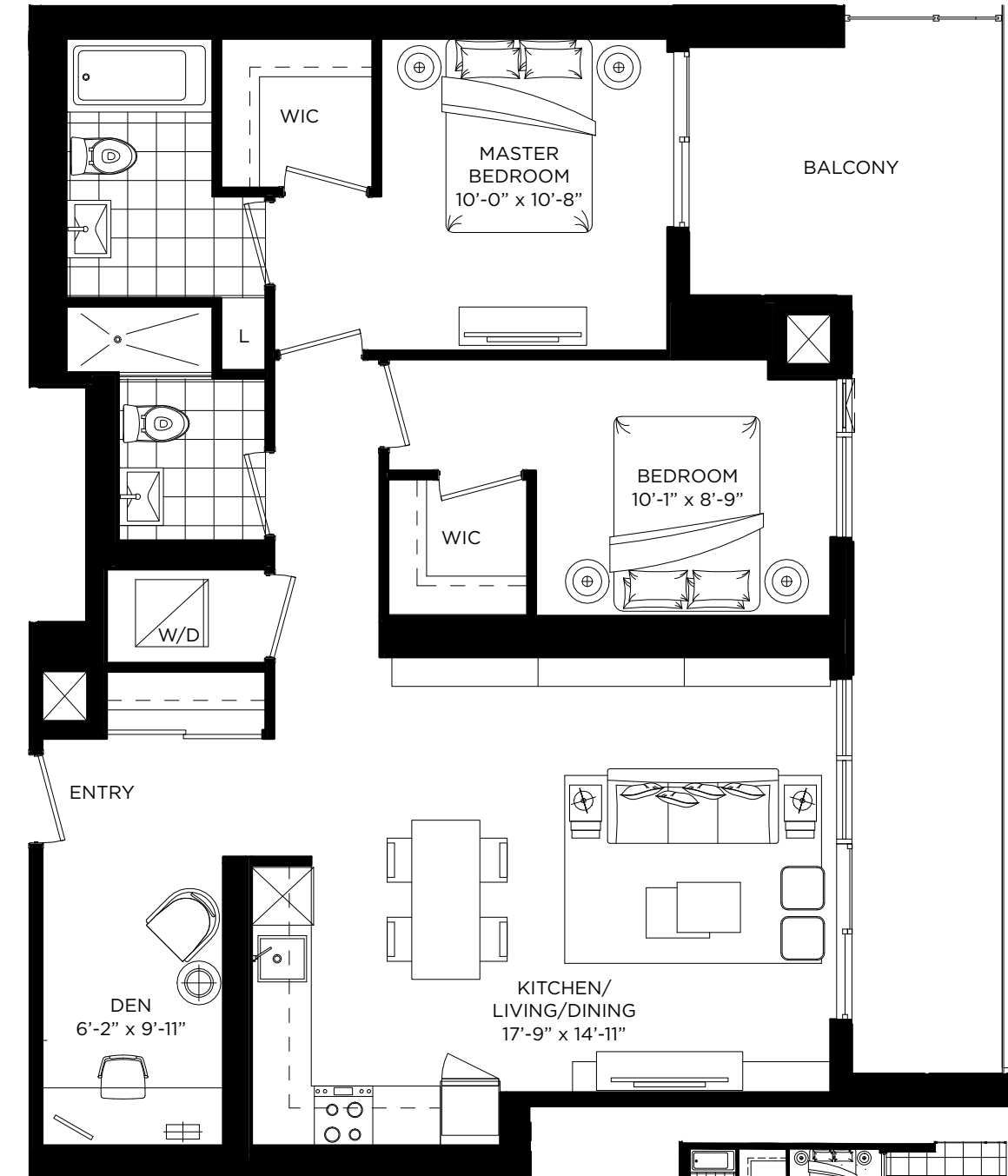
FLOOR 2



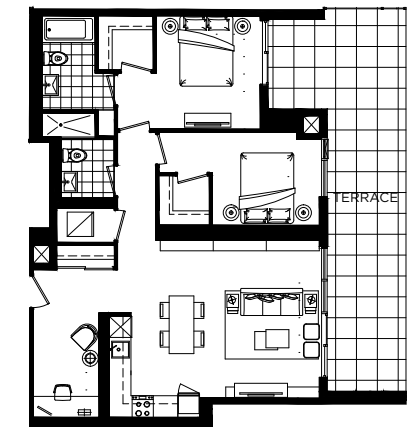
FLOOR 3-7



All dimensions, specifications and drawings are approximate. Plans may be mirror image. Furniture not included. Actual square footage may vary from the stated floor plan. E. & O. E. 6-10-2016



FLOOR 3-7



FLOOR 2

ICE CONDOMINIUMS



THE RESIDENCES OF MAPLE LEAF SQUARE



ONE BEDFORD



THE BRITT



TEAHOUSE



MURANO



11 WELLESLEY



Within a single decade, multi-award-winning Lanterra Developments has established a reputation as a company that creates landmark residential communities admired for their exceptional architecture, brilliant interior design and an array of amenities that make urban living truly exciting and vital. Led by Chairman Mark Mandelbaum and President and CEO Barry Fenton, Lanterra Developments is firmly committed to delivering state-of-the-art urban environments with exceptional value. The firm has been honoured locally by the Greater Toronto Home Builder Association (now BILD) as Project of the Year for Toy Factory Lofts, Project of the Year for The Residences of Maple Leaf Square, Best Model Suite for Neptune at WaterParkCity, and earned international recognition at the prestigious Nationals for Murano, Toy Factory Lofts, The Residences of Maple Leaf Square, and ICE Condominiums at York Centre.



CF TORONTO EATON CENTRE, TORONTO



DELOITTE TOWER, MONTREAL



MAPLE LEAF SQUARE, TORONTO

CF Cadillac Fairview

The Cadillac Fairview Corporation Limited is one of North America's largest investors, owners and managers of commercial real estate. For more than 50 years, Cadillac Fairview has been leading the way in commercial real estate with innovative design, development and management. Cadillac Fairview focuses on developing and managing high quality office properties, regional shopping centres, and residences in Canada and the United States, as well as international investments in real estate companies and investment funds. With a portfolio valued at more than \$28 billion, Cadillac Fairview and its affiliates own and manage nearly 36 million square feet of leasable space at 66 properties across North America, including some of Canada's landmark developments such as CF Toronto-Dominion Centre, CF Toronto Eaton Centre, CF Pacific Centre and CF Chinook Centre.



RITZ-CARLTON, TORONTO

When it comes to residential development, Cadillac Fairview is committed to delivering the highest quality of living by creating landmark communities in some of the most sought-after neighbourhoods. These communities are distinguished by iconic urban architecture, exquisitely detailed suites and fabulous lifestyle amenities. Some of the company's most notable and recent projects in Toronto include: Development of the RBC office tower, Maple Leaf Square (mixed use), The Residences at The Ritz-Carlton and the revitalization of the Toronto Eaton Centre and Toronto-Dominion Centre. Cadillac Fairview is wholly owned by the Ontario Teacher's Pension Plan, which invests to secure the retirement income of 300,000 active and retired teachers in Ontario.

an Outstanding Team



HARIRI PONTARINI

Hariri Pontarini Architects is a full-service Canadian firm devoted to producing work of lasting value. Siamak Hariri and David Pontarini founded the Toronto office in 1994 motivated by a shared commitment to design quality. Today their 85-person practice offers its clients in-depth partner involvement through all stages of design and the breadth of building experience and technical expertise to rigorously oversee construction. HPA believes solid relationships result in strong projects. They take pride in forging lasting collaborations with all involved in the design, development and construction process: clients, consultants, fabricators, policymakers, construction workers and colleagues.



STUDIO MUNGE

Studio Munge is guided by a passion for great design, inspired by excellence and committed to exceptional service. With more than 20 years of experience in the industry, Principal Alessandro Munge's global perspective, inquisitive nature and quest for the perfect solution has propelled Studio Munge onto the international stage. Creative leadership is what informs and inspires Studio Munge's multidisciplinary team to produce distinctive, transformative design. As avid collaborators, Studio Munge forms partnerships with a global roster of top hospitality brands, condominium and residential developers, and architects.



NAK DESIGN STRATEGIES

Located in Toronto, NAK Design Strategies is one of the largest landscape architectural practices in Ontario, working across Canada and in China, Thailand, the US and the Caribbean. The founding principals believe the design process combines a synthesis of the site characteristics with a deep understanding of the programme requirements. NAK's projects include Gardiner Museum of Ceramic Arts, Bell Lightbox and Festival Tower, The Cheddington and One Post Road in the exclusive Bridle Path district of Toronto. NAK Design Strategies has won prestigious national design awards for their outstanding creative work.

CF Cadillac
Fairview

LANTERRA
DEVELOPMENTS

CF Shops at Don Mills

