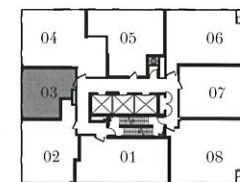
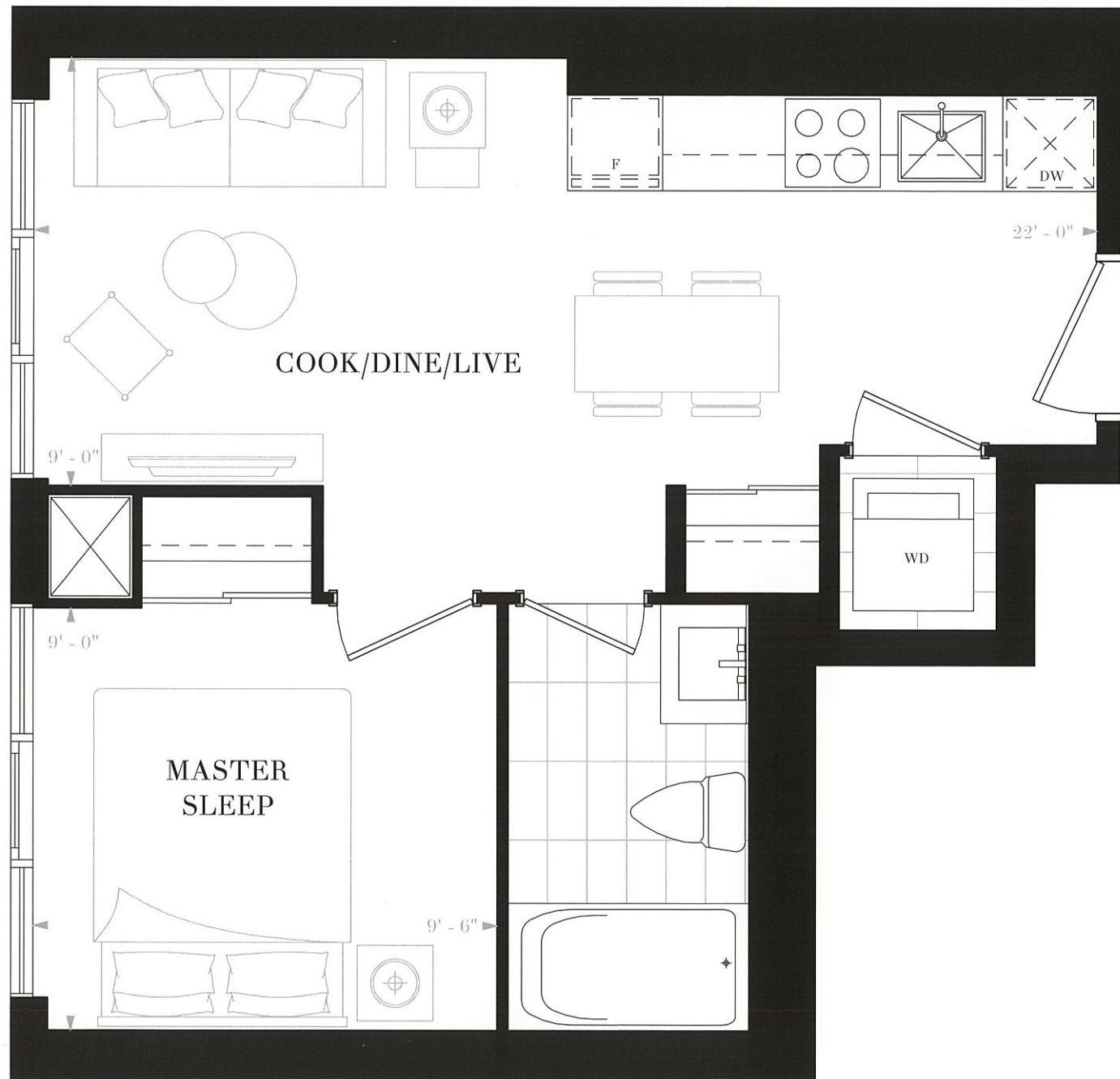


NOBU
RESIDENCES
TORONTO

SUITE E1B
1 BEDROOM
1 BATH
INTERIOR: 427 SF



FLOORS 13-19, 28-35

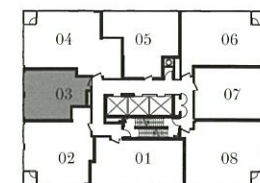
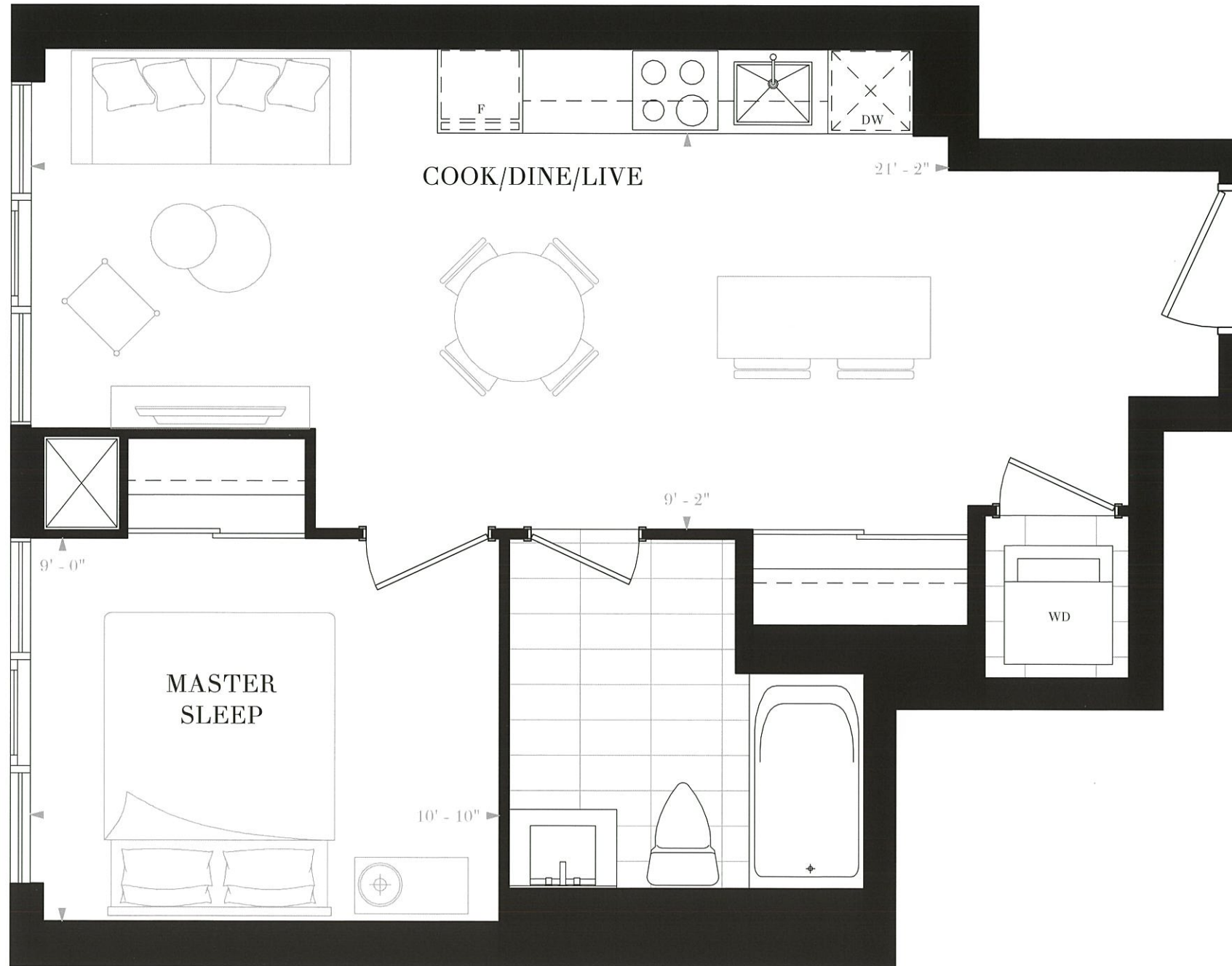
NOBURESIDENCES.CA

Any stated areas and/or dimensions shown are approximate only and subject to normal construction variances. Actual usable floor space may vary from any stated or depicted floor area. The layout of the suite may be reversed depending on the location of the unit within the project. Any furniture depicted is for illustration purposes only and does not necessarily reflect the electrical plan of the unit. Windows behind the cladding, installed as a design element, may be spandrel or vision glass. The view from or through the windows to the exterior may be partially obstructed by materials affixed to the exterior cladding of the building as part of an overall design element. Any and all sizes and/or specifications are subject to change without notice. All illustrations are artist's concept only. E. & O.E. May 2017



NOBU
RESIDENCES
TORONTO

SUITE E1C
1 BEDROOM
1 BATH
INTERIOR: 527 SF



FLOORS 20-27

NOBURESIDENCES.CA

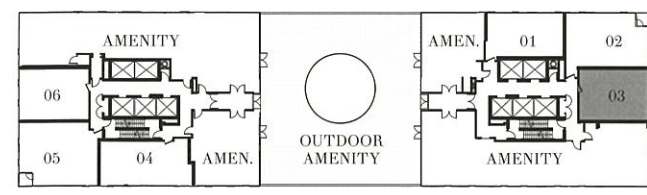
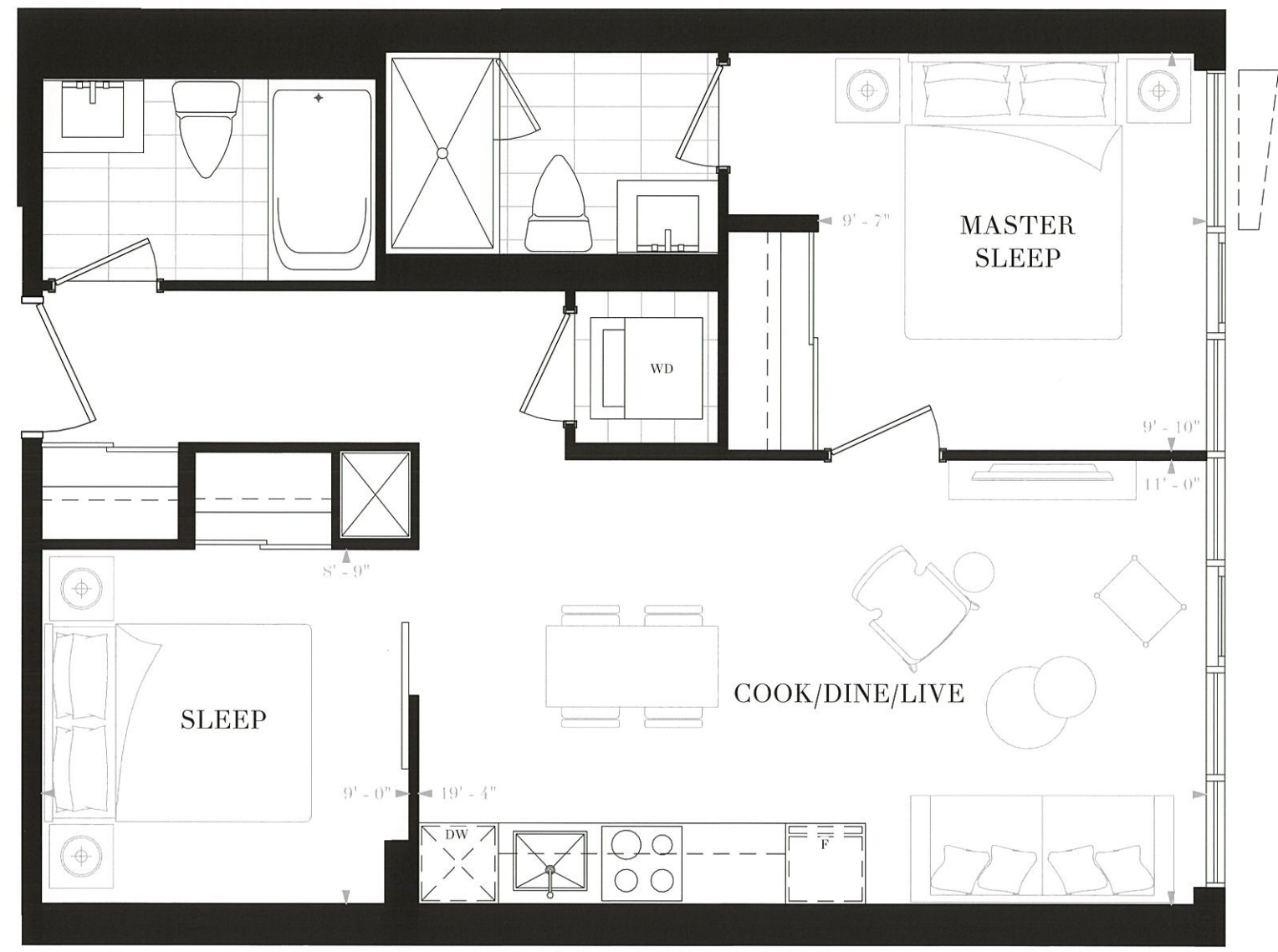
Any stated areas and/or dimensions shown are approximate only and subject to normal construction variances. Actual usable floor space may vary from any stated or depicted floor area. The layout of the suite may be reversed depending on the location of the unit within the project. Any furniture depicted is for illustration purposes only and does not necessarily reflect the electrical plan of the unit. Windows behind the cladding, installed as a design element, may be spandrel or vision glass. The view from or through the windows to the exterior may be partially obstructed by materials affixed to the exterior cladding of the building as part of an overall design element. Any and all sizes and/or specifications are subject to change without notice. All illustrations are artist's concept only. E. & O. E. May 2017



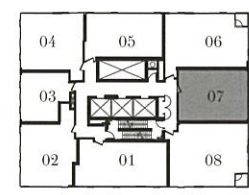
NOBU

RESIDENCES
TORONTO

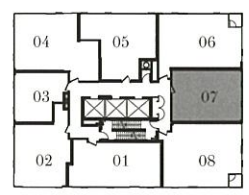
SUITE E2B
 2 BEDROOMS
 2 BATHS
 INTERIOR: 652 SF



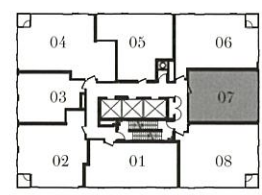
FLOOR 10



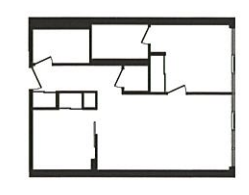
FLOORS 11-12



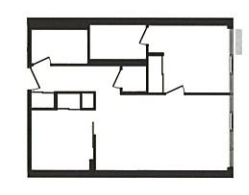
FLOORS 13-19, 28-35



FLOORS 20-27



FLOORS 10-11, 14-15, 18-19,
22-23, 26-27, 30-31, 34-35



FLOORS 12-13, 16-17,
20-21, 24-25, 28-29, 32-33

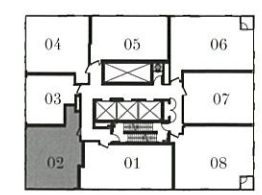
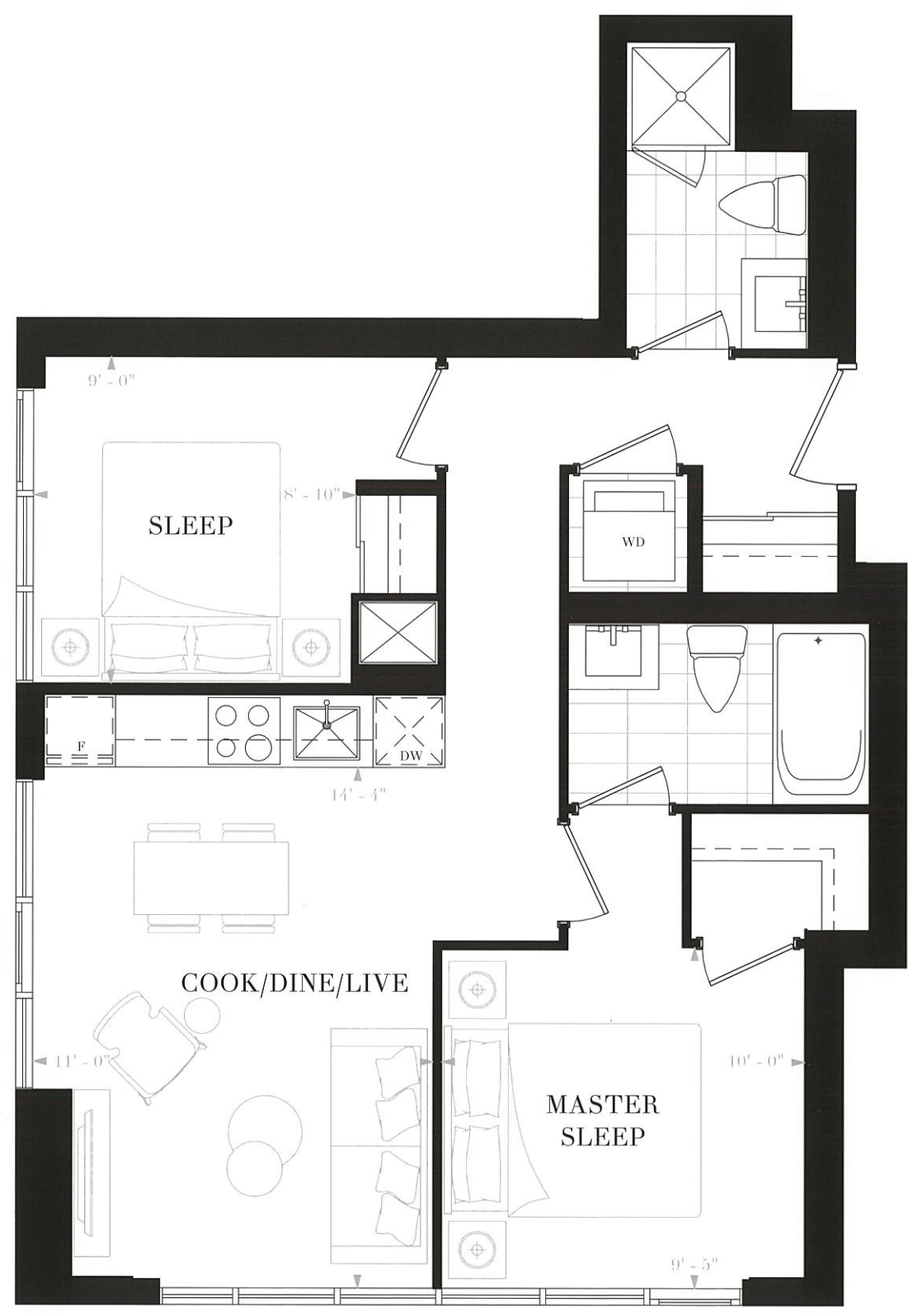
NOBURESIDENCES.CA

Any stated areas and/or dimensions shown are approximate only and subject to normal construction variances. Actual usable floor space may vary from any stated or depicted floor area. The layout of the suite may be reversed depending on the location of the unit within the project. Any furniture depicted is for illustration purposes only and does not necessarily reflect the electrical plan of the unit. Windows behind the cladding, installed as a design element, may be spandrel or vision glass. The view from or through the windows to the exterior may be partially obstructed by materials affixed to the exterior cladding of the building as part of an overall design element. Any and all sizes and/or specifications are subject to change without notice. All illustrations are artist's concept only. E. & O. E. May 2017

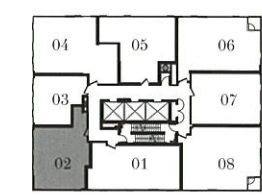


NOBU
RESIDENCES
TORONTO

SUITE E2C
2 BEDROOMS
2 BATHS
INTERIOR: 667 SF



FLOORS 11-12



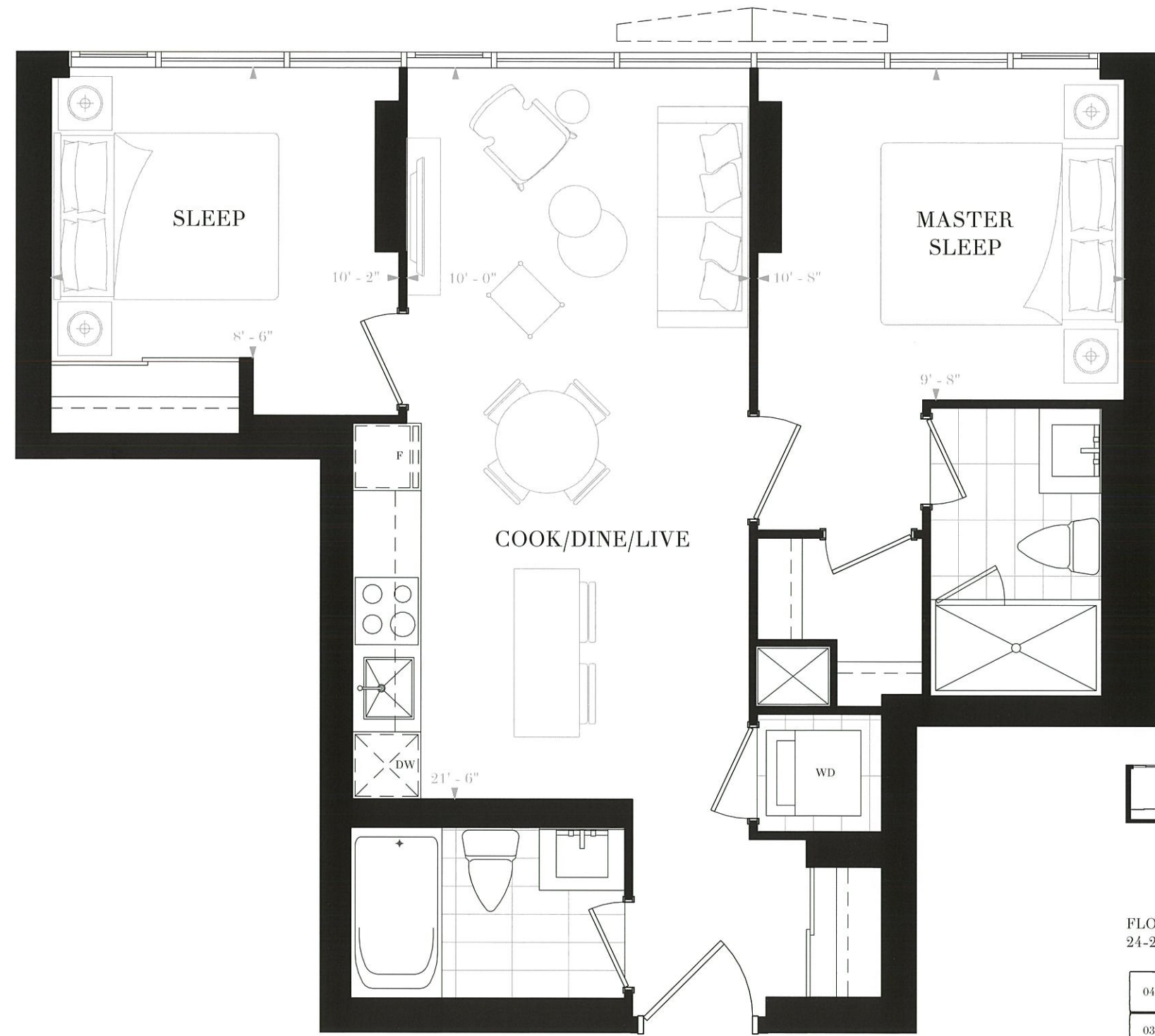
FLOORS 13-19, 28-35



NOBU

RESIDENCES
TORONTO

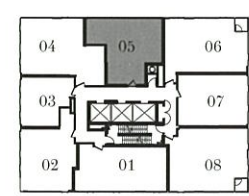
SUITE E2E
2 BEDROOMS
2 BATHS
INTERIOR: 719 SF



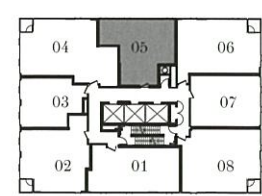
FLOORS 13, 16-17, 20-21,
24-25, 28-29, 32-33



FLOORS 14-15, 18-19,
22-23, 26-27, 30-31, 34-35



FLOORS 13-19, 28-35



FLOORS 20-27

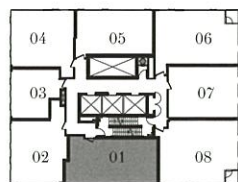
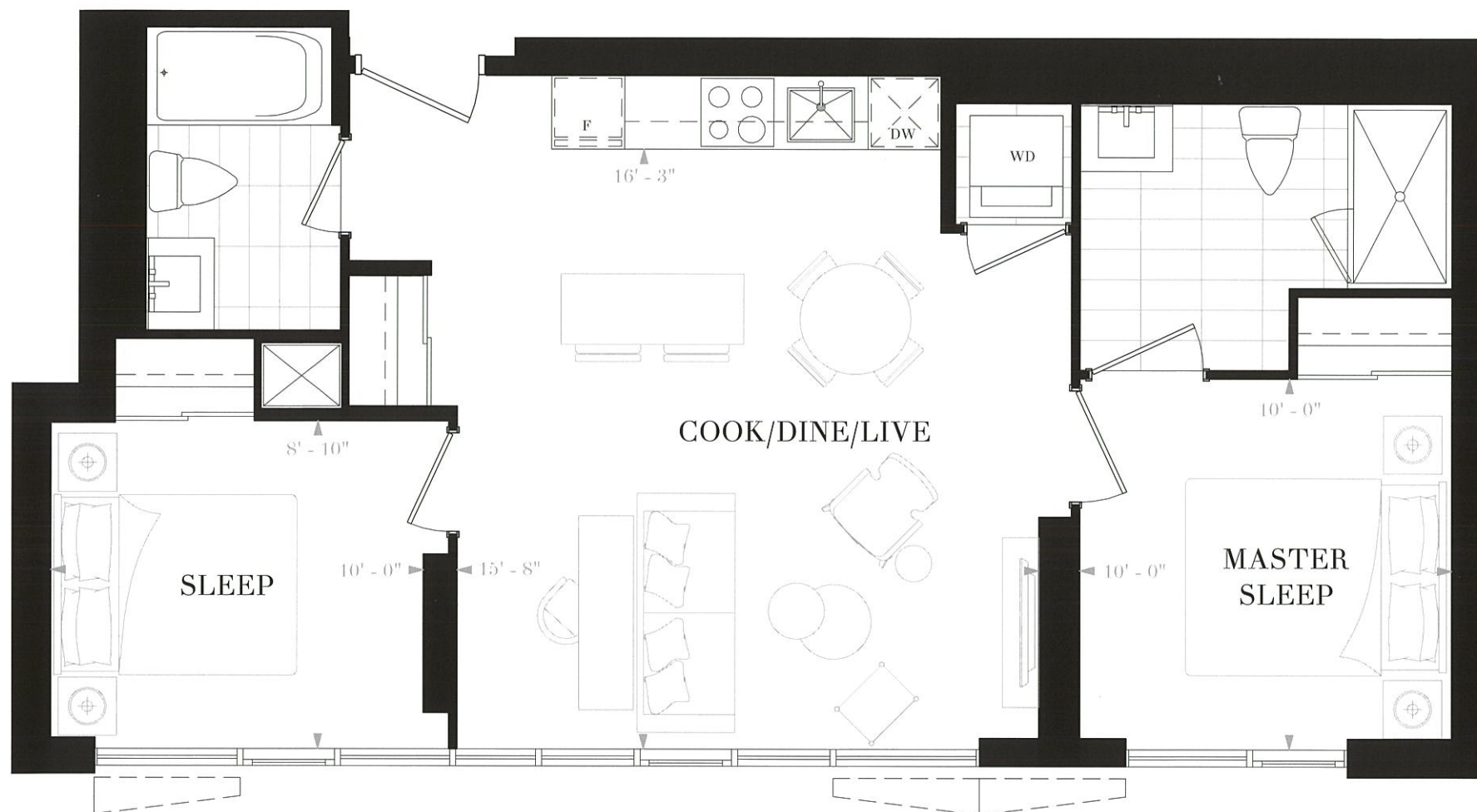
NOBURESIDENCES.CA

Any stated areas and/or dimensions shown are approximate only and subject to normal construction variances. Actual usable floor space may vary from any stated or depicted floor area. The layout of the suite may be reversed depending on the location of the unit within the project. Any furniture depicted is for illustration purposes only and does not necessarily reflect the electrical plan of the unit. Windows behind the cladding, installed as a design element, may be spandrel or vision glass. The view from or through the windows to the exterior may be partially obstructed by materials affixed to the exterior cladding of the building as part of an overall design element. Any and all sizes and/or specifications are subject to change without notice. All illustrations are artist's concept only. E. & O. E. May 2017

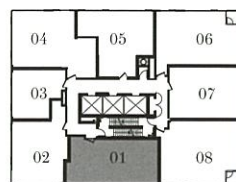


NOBU
RESIDENCES
TORONTO

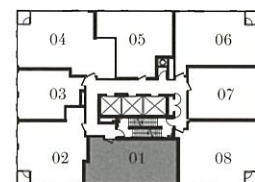
SUITE E2F
2 BEDROOMS
2 BATHS
INTERIOR: 748 SF



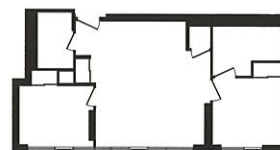
FLOORS 11-12



FLOORS 13-19, 28-35



FLOORS 20-27



FLOORS 11, 14-15, 18-19,
22-23, 26-27, 30-31, 34-35



FLOORS 12-13, 16-17, 20-21,
24-25, 28-29, 32-33



NOBU

RESIDENCES
TORONTO

SUITE E2G

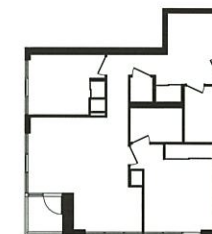
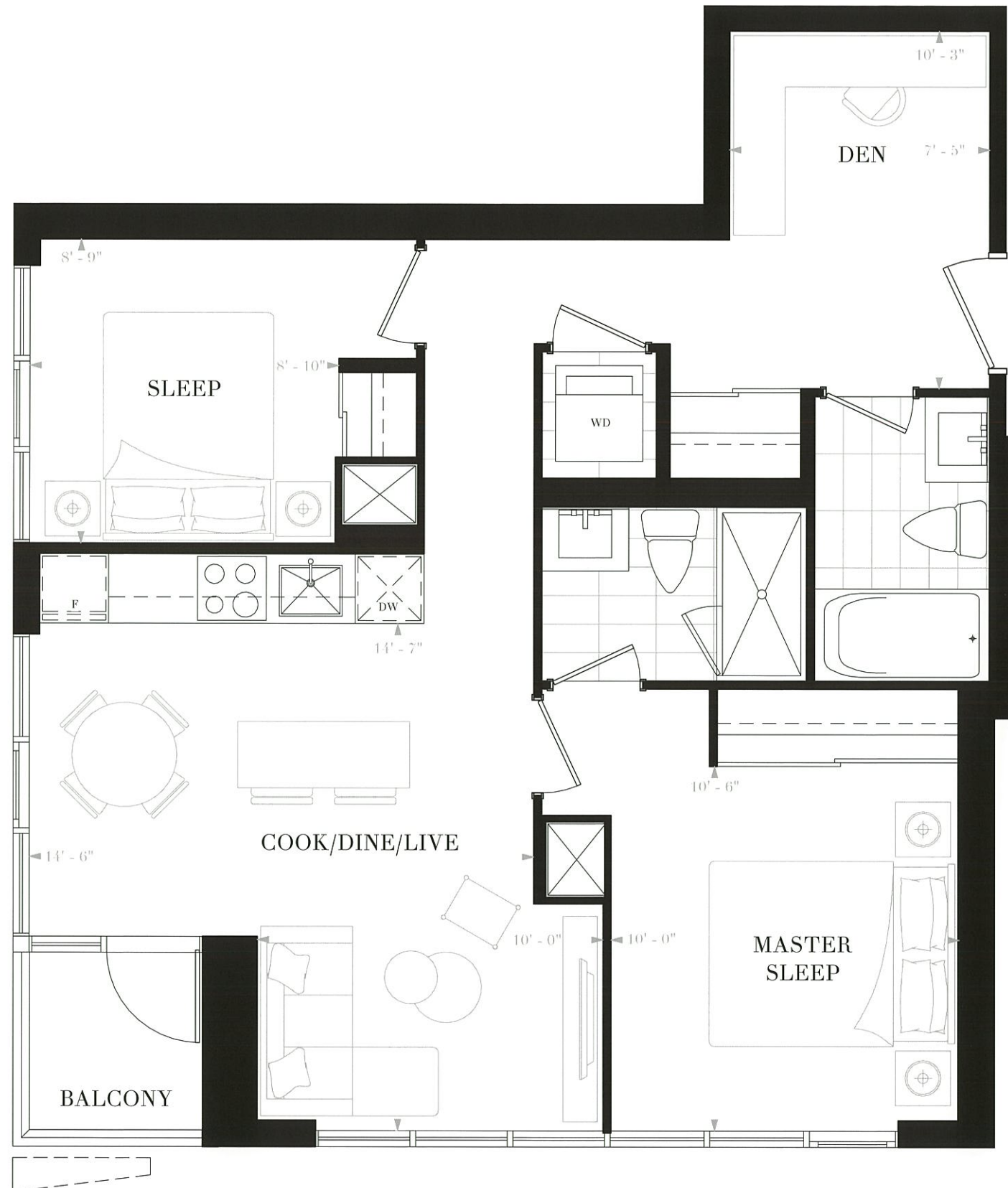
2 BEDROOMS & DEN

2 BATHS

INTERIOR: 776 SF

BALCONY: 28 SF

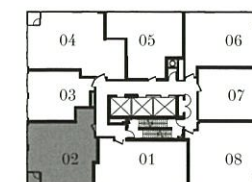
TOTAL: 804 SF



FLOORS 20-21, 24-25



FLOORS 22-23, 26-27



FLOORS 20-27

NOBURESIDENCES.CA

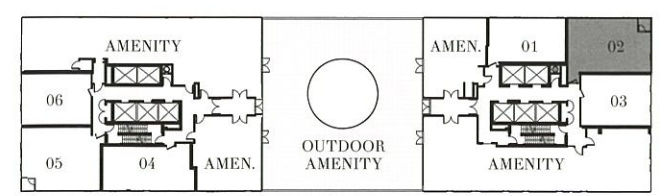
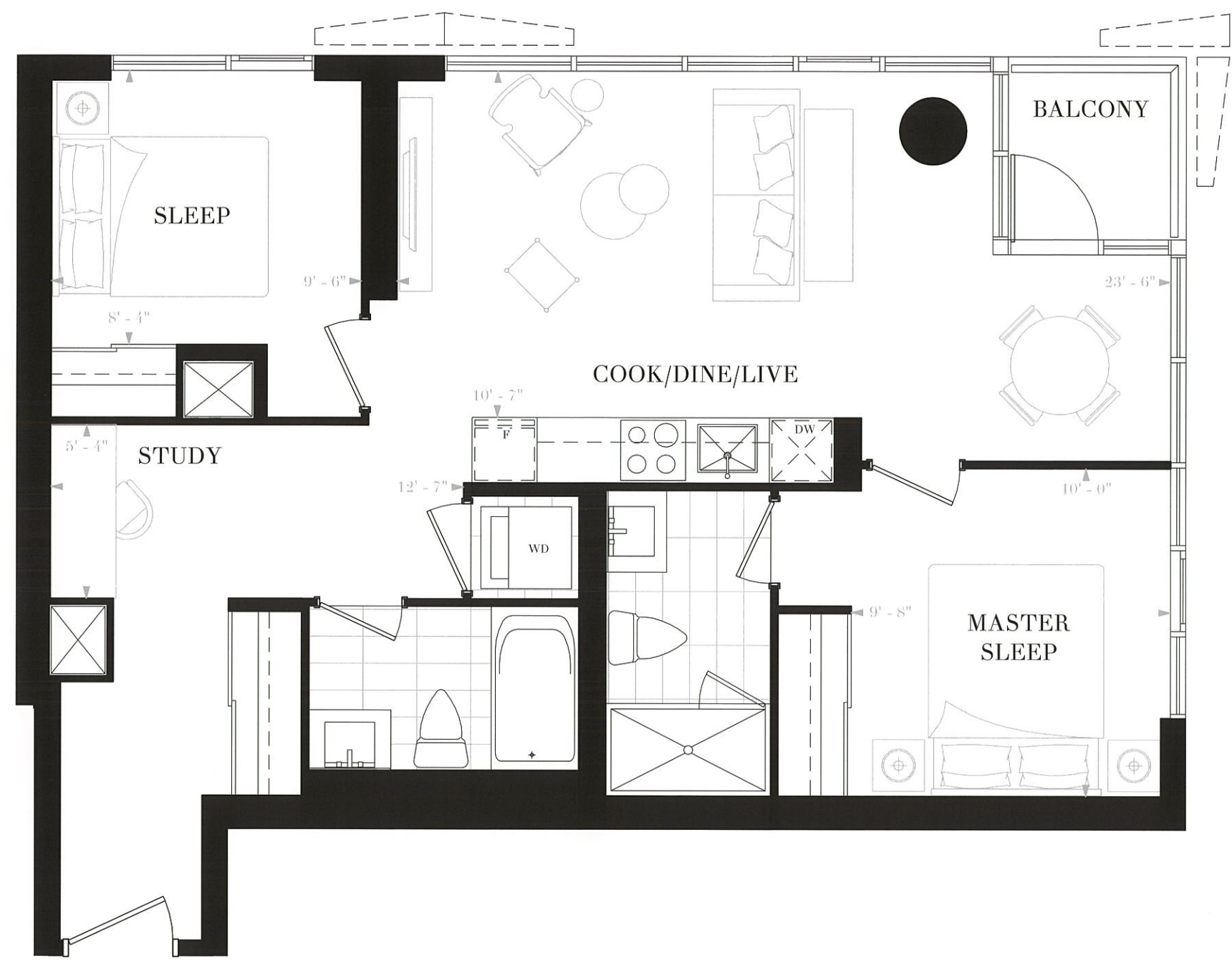
Any stated areas and/or dimensions shown are approximate only and subject to normal construction variances. Actual usable floor space may vary from any stated or depicted floor area. The layout of the suite may be reversed depending on the location of the unit within the project. Any furniture depicted is for illustration purposes only and does not necessarily reflect the electrical plan of the unit. Windows behind the cladding, installed as a design element, may be spandrel or vision glass. The view from or through the windows to the exterior may be partially obstructed by materials affixed to the exterior cladding of the building as part of an overall design element. Any and all sizes and/or specifications are subject to change without notice. All illustrations are artist's concept only. E. & O. E. May 2017



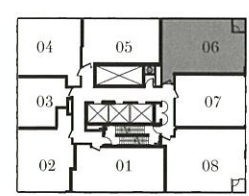
NOBU

RESIDENCES
TORONTO

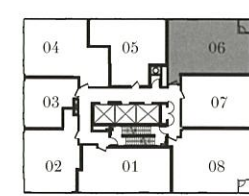
SUITE E2H
 2 BEDROOMS
 2 BATHS
 INTERIOR: 799 SF
 BALCONY: 28 SF
 TOTAL: 827 SF



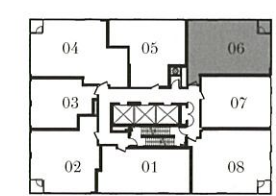
FLOOR 10



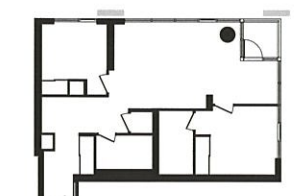
FLOORS 11-12



FLOORS 13-19, 28-35



FLOORS 20-27



FLOORS 10-11, 14-15, 18-19, 22-23, 26-27, 30-31, 34-35



FLOORS 12-13, 16-17, 20-21, 24-25, 28-29, 32-33

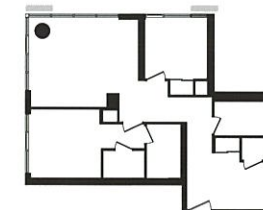
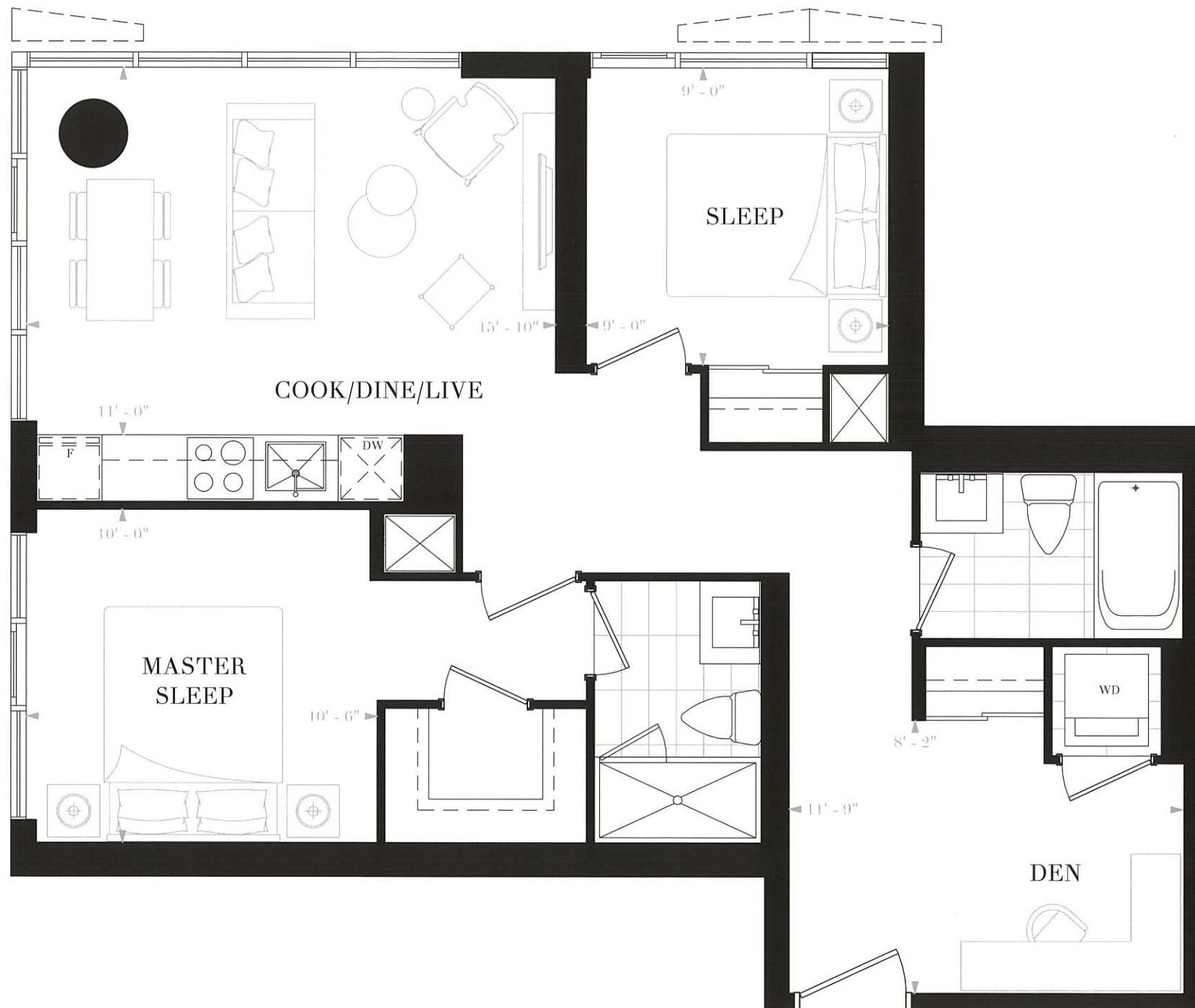


NOBU

RESIDENCES
TORONTO

EAST TOWER RESIDENCES

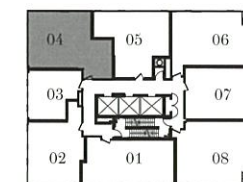
SUITE E2J
2 BEDROOMS & DEN
2 BATHS
INTERIOR: 814 SF



FLOORS 13, 16-17, 28-29,
32-33



FLOORS 14-15, 18-19, 30-31,
34-35



FLOORS 13-19, 28-35

NOBURESIDENCES.CA

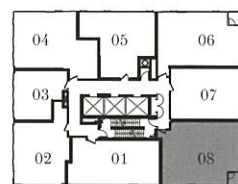
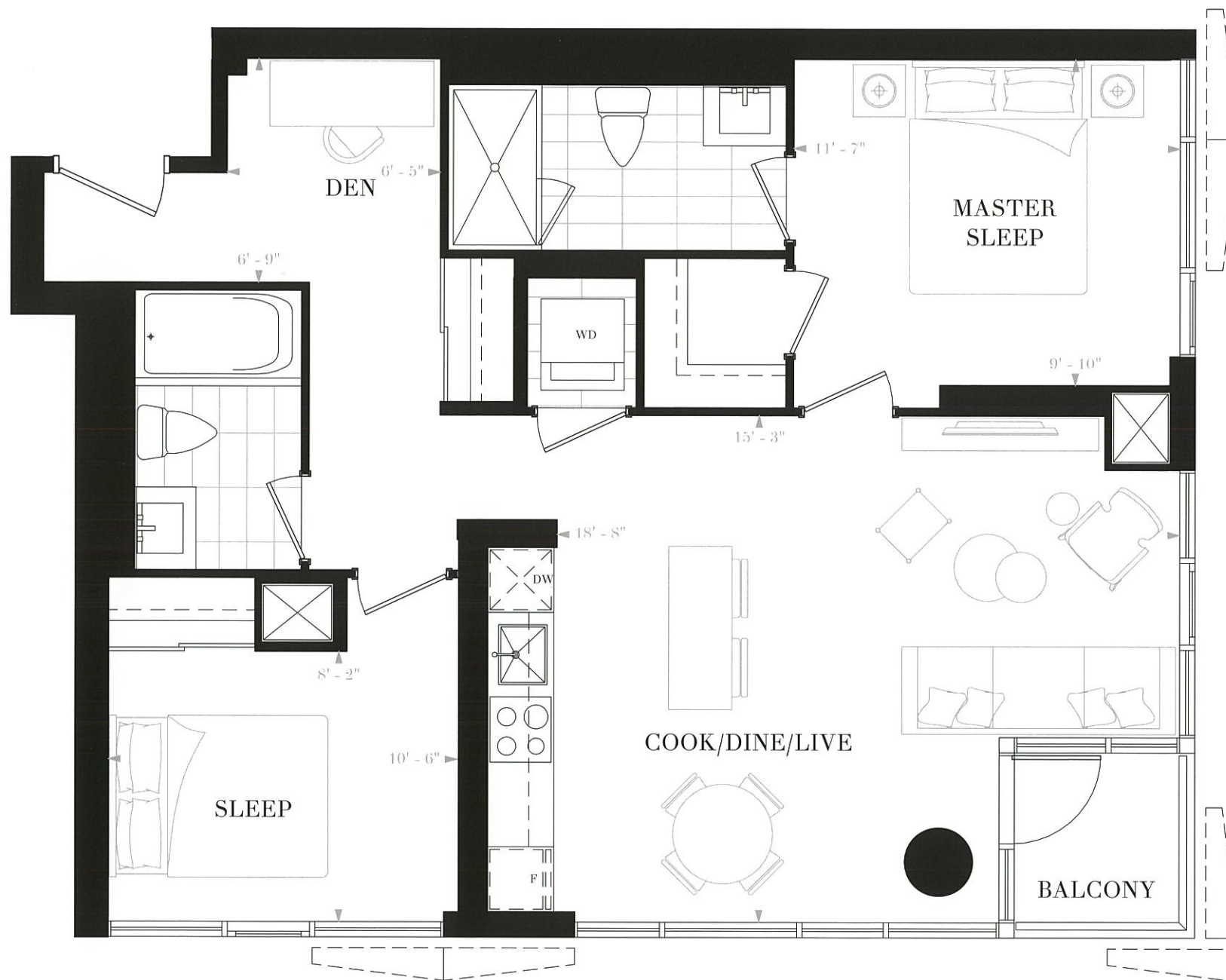
Any stated areas and/or dimensions shown are approximate only and subject to normal construction variances. Actual usable floor space may vary from any stated or depicted floor area. The layout of the suite may be reversed depending on the location of the unit within the project. Any furniture depicted is for illustration purposes only and does not necessarily reflect the electrical plan of the unit. Windows behind the cladding, installed as a design element, may be spandrel or vision glass. The view from or through the windows to the exterior may be partially obstructed by materials affixed to the exterior cladding of the building as part of an overall design element. Any and all sizes and/or specifications are subject to change without notice. All illustrations are artist's concept only. E. & O. E. May 2017



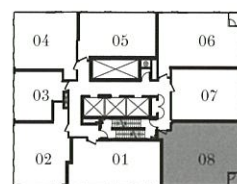
NOBU

RESIDENCES
TORONTO

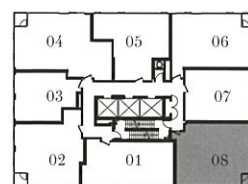
SUITE E2K
 2 BEDROOMS & DEN
 2 BATHS
 INTERIOR: 862 SF
 BALCONY: 28 SF
 TOTAL: 890 SF



FLOORS 11-12



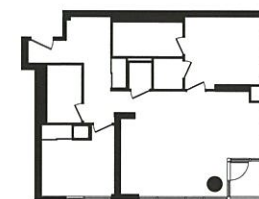
FLOORS 13-19, 28-35



FLOORS 20-27



FLOORS 11, 14-15, 18-19,
22-23, 26-27, 30-31, 34-35



FLOORS 12-13, 16-17,
20-21, 24-25, 28-29, 32-33

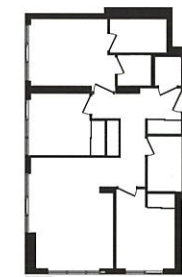
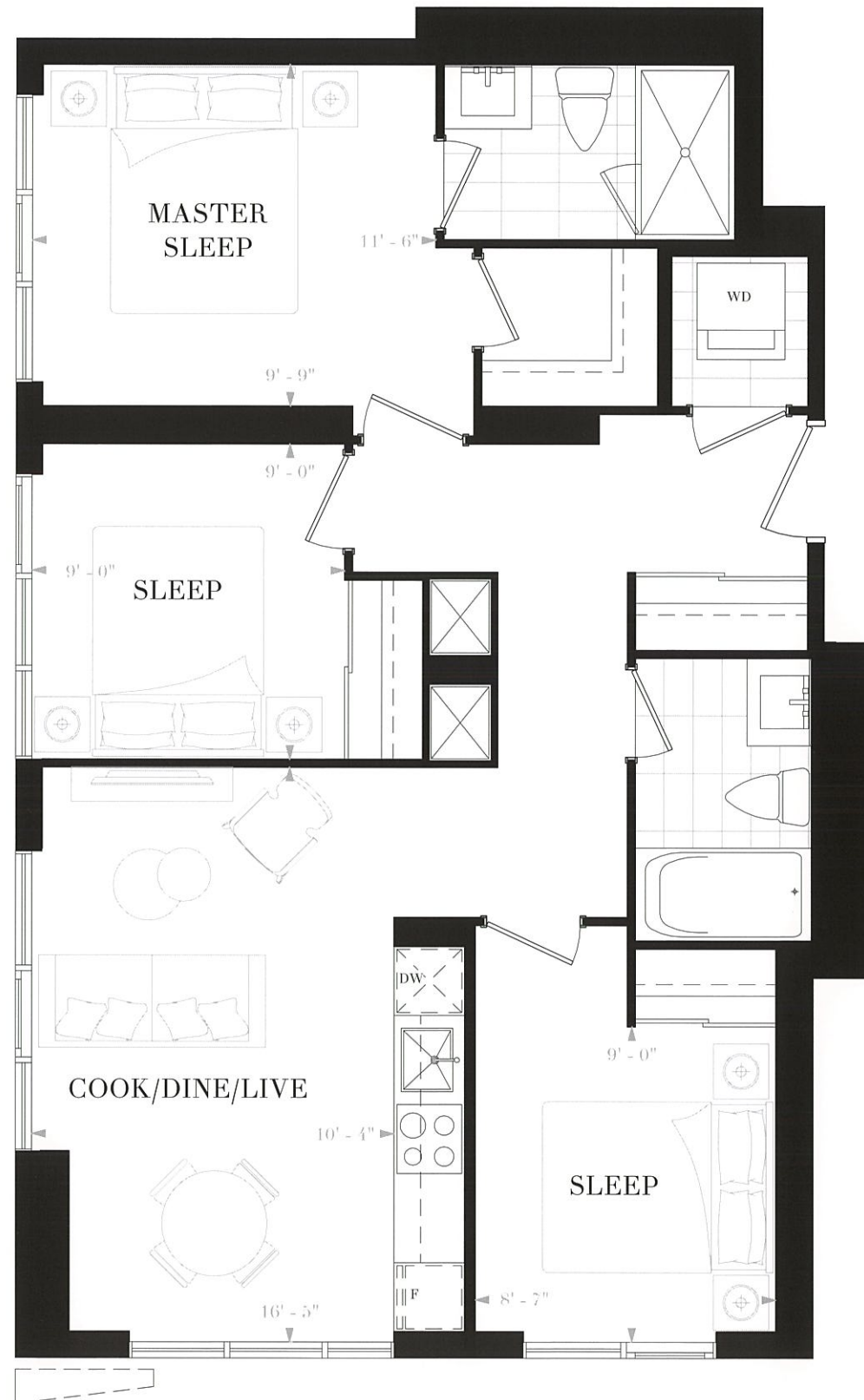


NOBU

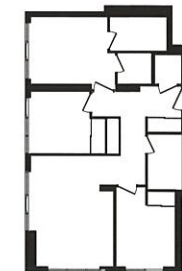
RESIDENCES
TORONTO

SUITE E3A
3 BEDROOMS
2 BATHS

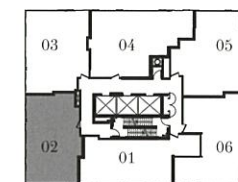
INTERIOR: 856 SF



FLOORS 42-43



FLOORS 44-45



FLOORS 42-45

NOBURESIDENCES.CA

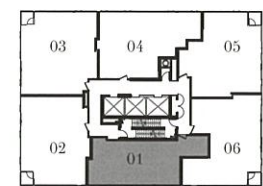
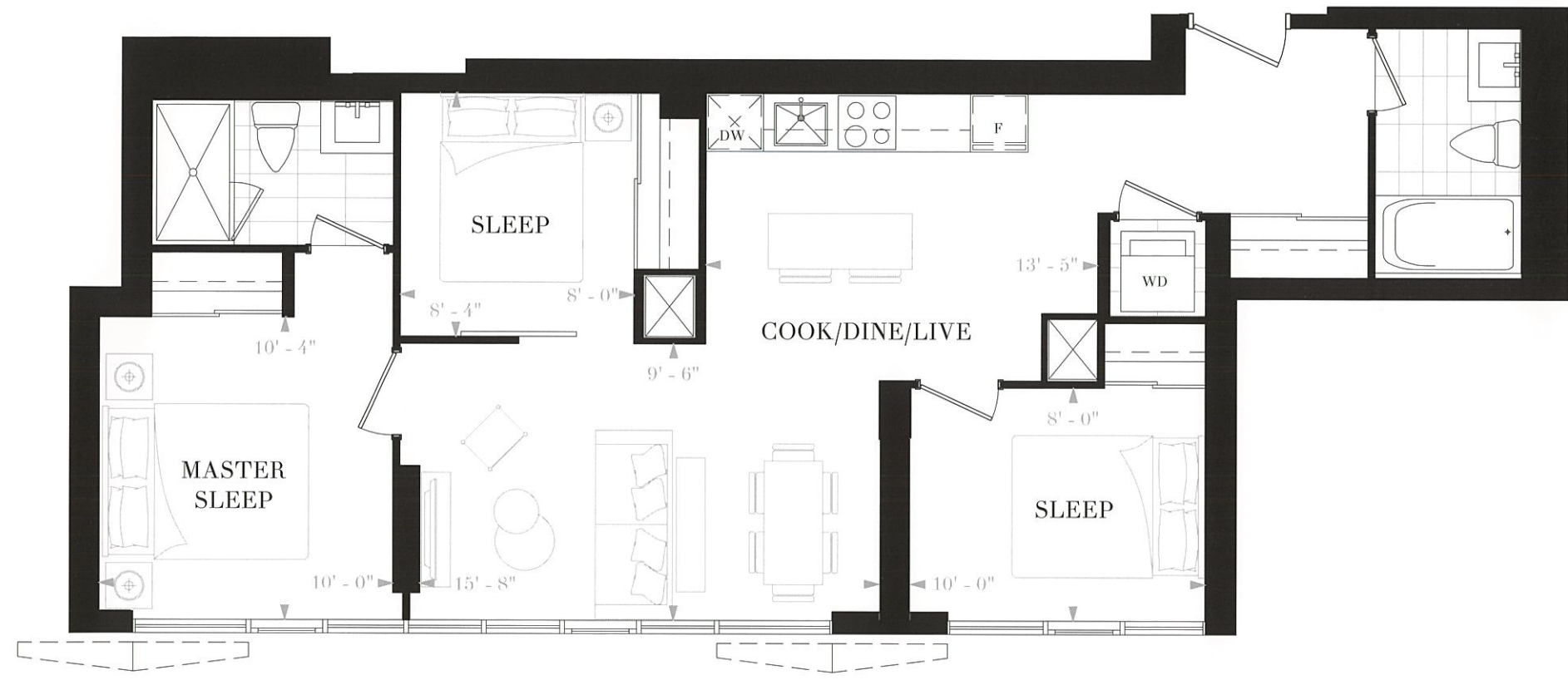
Any stated areas and/or dimensions shown are approximate only and subject to normal construction variances. Actual usable floor space may vary from any stated or depicted floor area. The layout of the suite may be reversed depending on the location of the unit within the project. Any furniture depicted is for illustration purposes only and does not necessarily reflect the electrical plan of the unit. Windows behind the cladding, installed as a design element, may be spandrel or vision glass. The view from or through the windows to the exterior may be partially obstructed by materials affixed to the exterior cladding of the building as part of an overall design element. Any and all sizes and/or specifications are subject to change without notice. All illustrations are artist's concept only. E. & O. E. May 2017



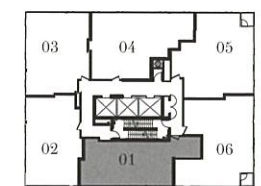
NOBU

RESIDENCES
TORONTO

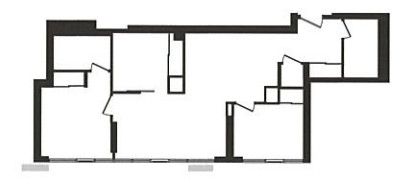
SUITE E3B
3 BEDROOMS
2 BATHS
INTERIOR: 864 SF



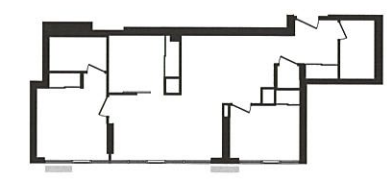
FLOORS 36-41



FLOORS 42-45



FLOORS 36-37, 40-41, 44-45



FLOORS 38-39, 42-43



NOBU

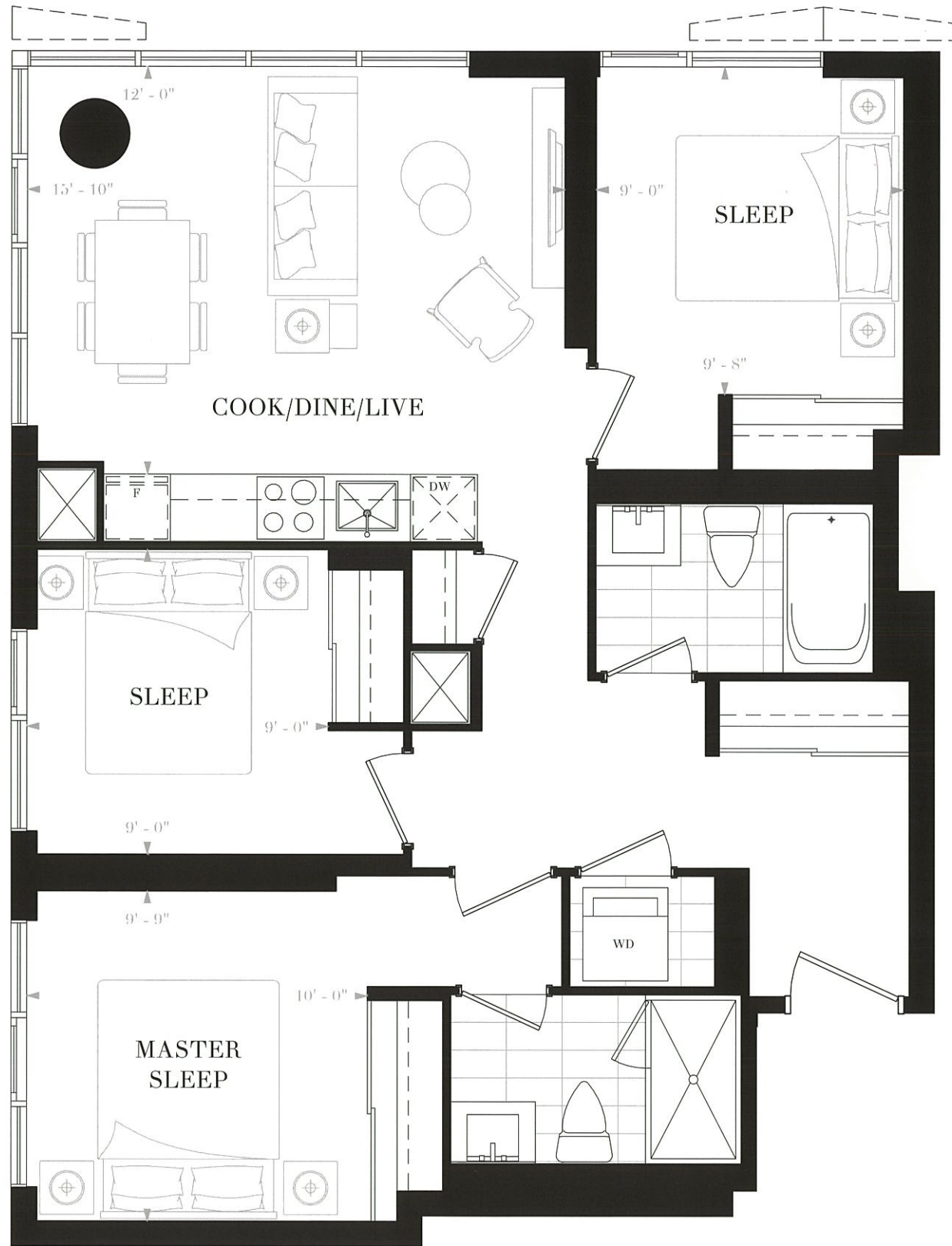
RESIDENCES
TORONTO

SUITE E3C

3 BEDROOMS

2 BATHS

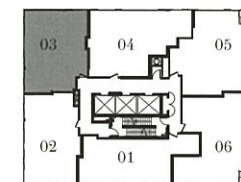
INTERIOR: 888 SF



FLOORS 42-43



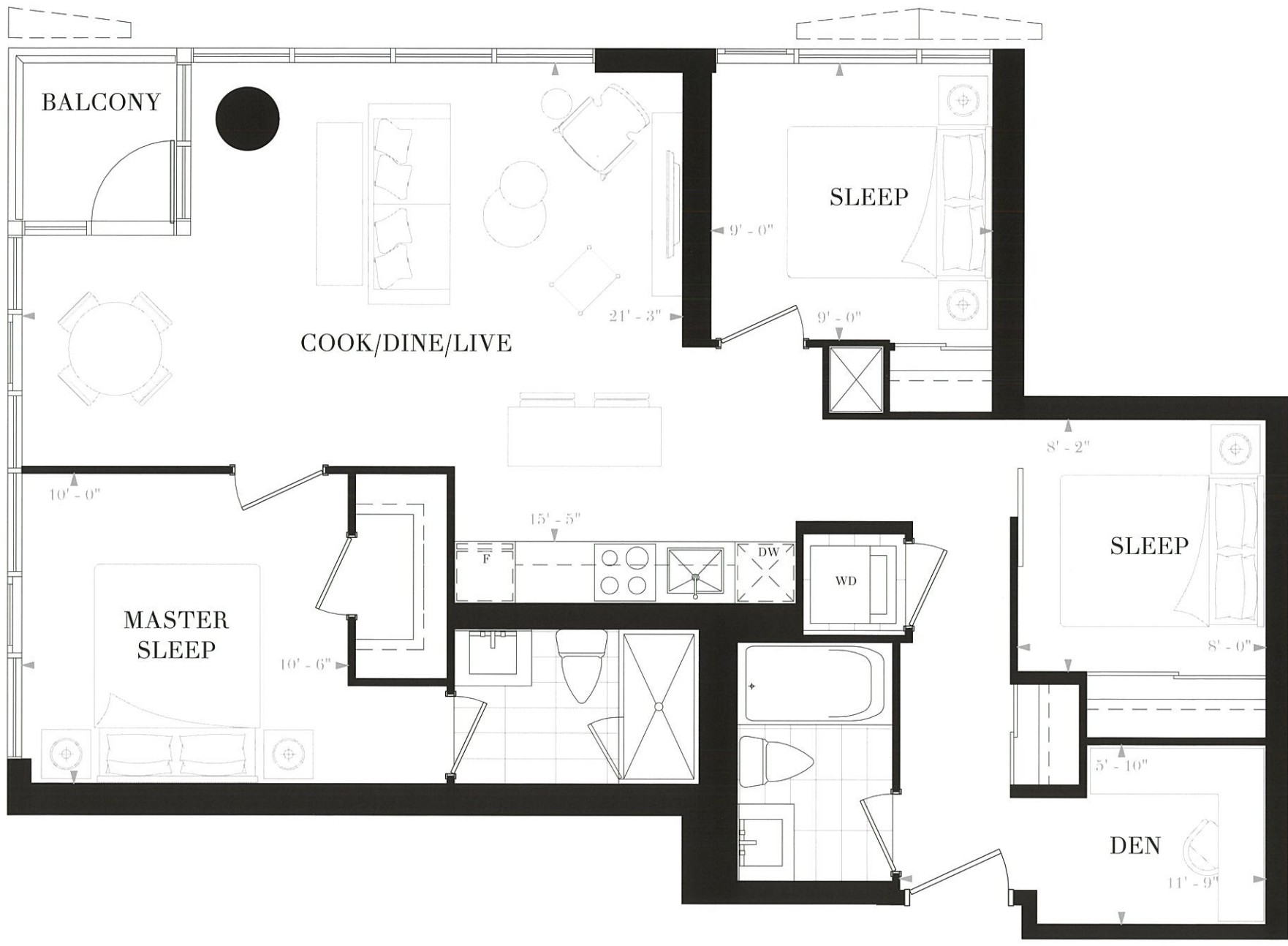
FLOORS 44-45



FLOORS 42-45



NOBU
RESIDENCES
TORONTO



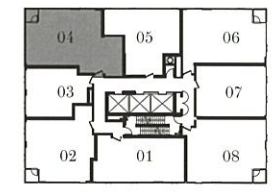
SUITE E3D
3 BEDROOMS & DEN
2 BATHS
INTERIOR: 929 SF
BALCONY: 28 SF
TOTAL: 957 SF



FLOORS 20-21, 24-25



FLOORS 22-23, 26-27



FLOORS 20-27



NOBU

RESIDENCES
TORONTO



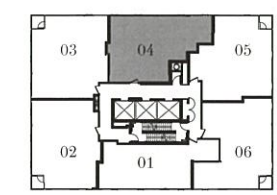
SUITE E3E
3 BEDROOMS
2 BATHS
INTERIOR: 1011 SF



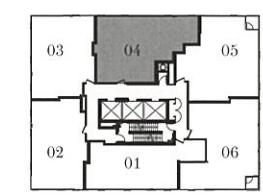
FLOORS 36-37, 40-41, 44-45



FLOORS 38-39, 42-43



FLOORS 36-41



FLOORS 42-45

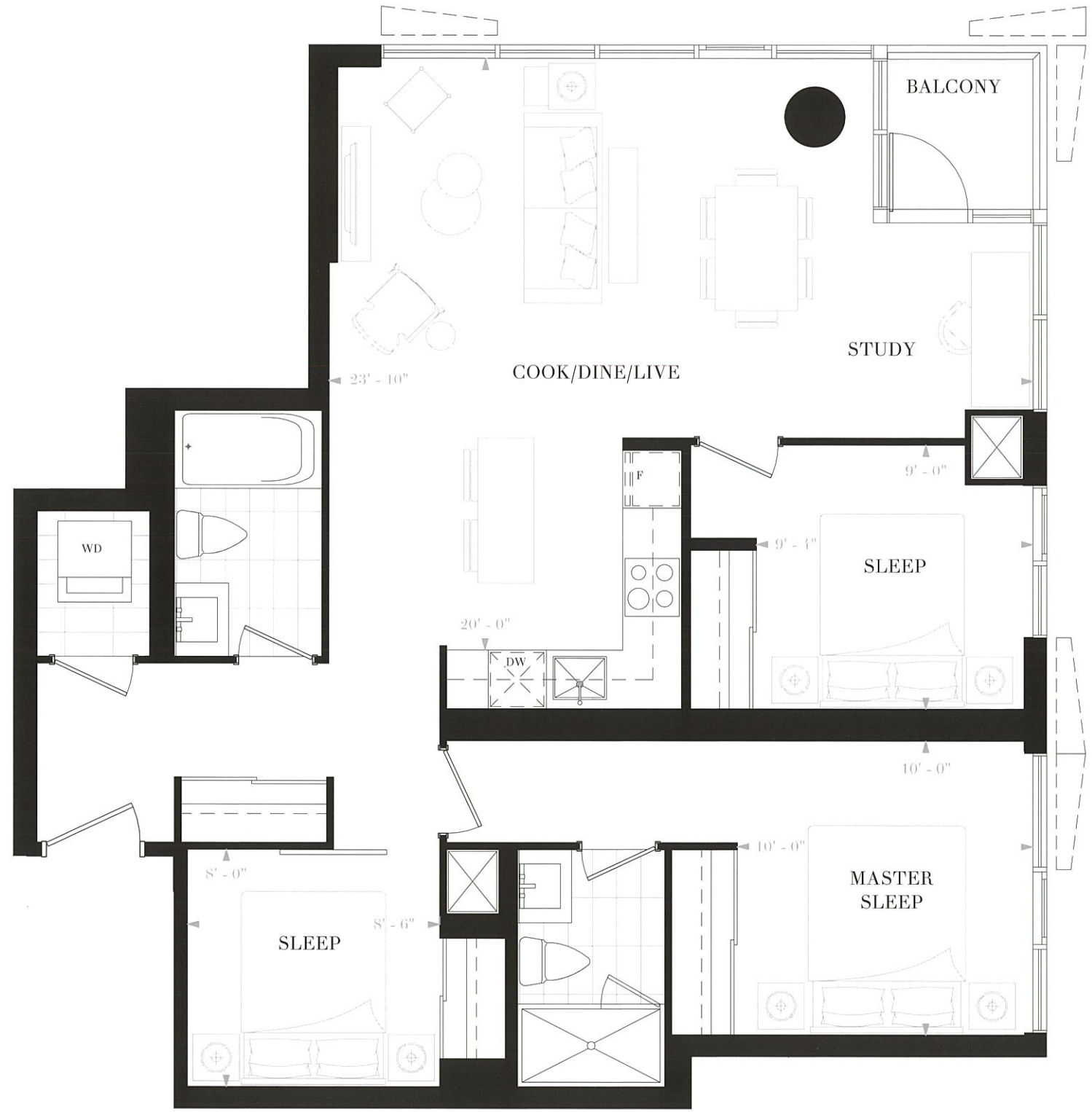


NOBU

RESIDENCES
TORONTO

SUITE E3F
3 BEDROOMS
2 BATHS

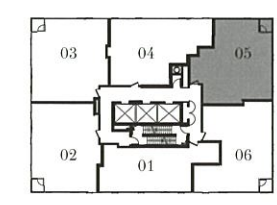
INTERIOR: 1015 SF
BALCONY: 28 SF
TOTAL: 1043 SF



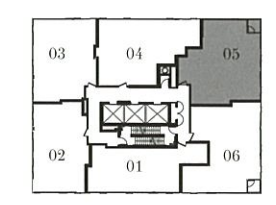
FLOORS 36-37, 40-41, 44-45



FLOORS 38-39, 42-43



FLOORS 36-41



FLOORS 42-45

NOBURESIDENCES.CA

Any stated areas and/or dimensions shown are approximate only and subject to normal construction variances. Actual usable floor space may vary from any stated or depicted floor area. The layout of the suite may be reversed depending on the location of the unit within the project. Any furniture depicted is for illustration purposes only and does not necessarily reflect the electrical plan of the unit. Windows behind the cladding, installed as a design element, may be spandrel or vision glass. The view from or through the windows to the exterior may be partially obstructed by materials affixed to the exterior cladding of the building as part of an overall design element. Any and all sizes and/or specifications are subject to change without notice. All illustrations are artist's concept only. E. & O. E. May 2017

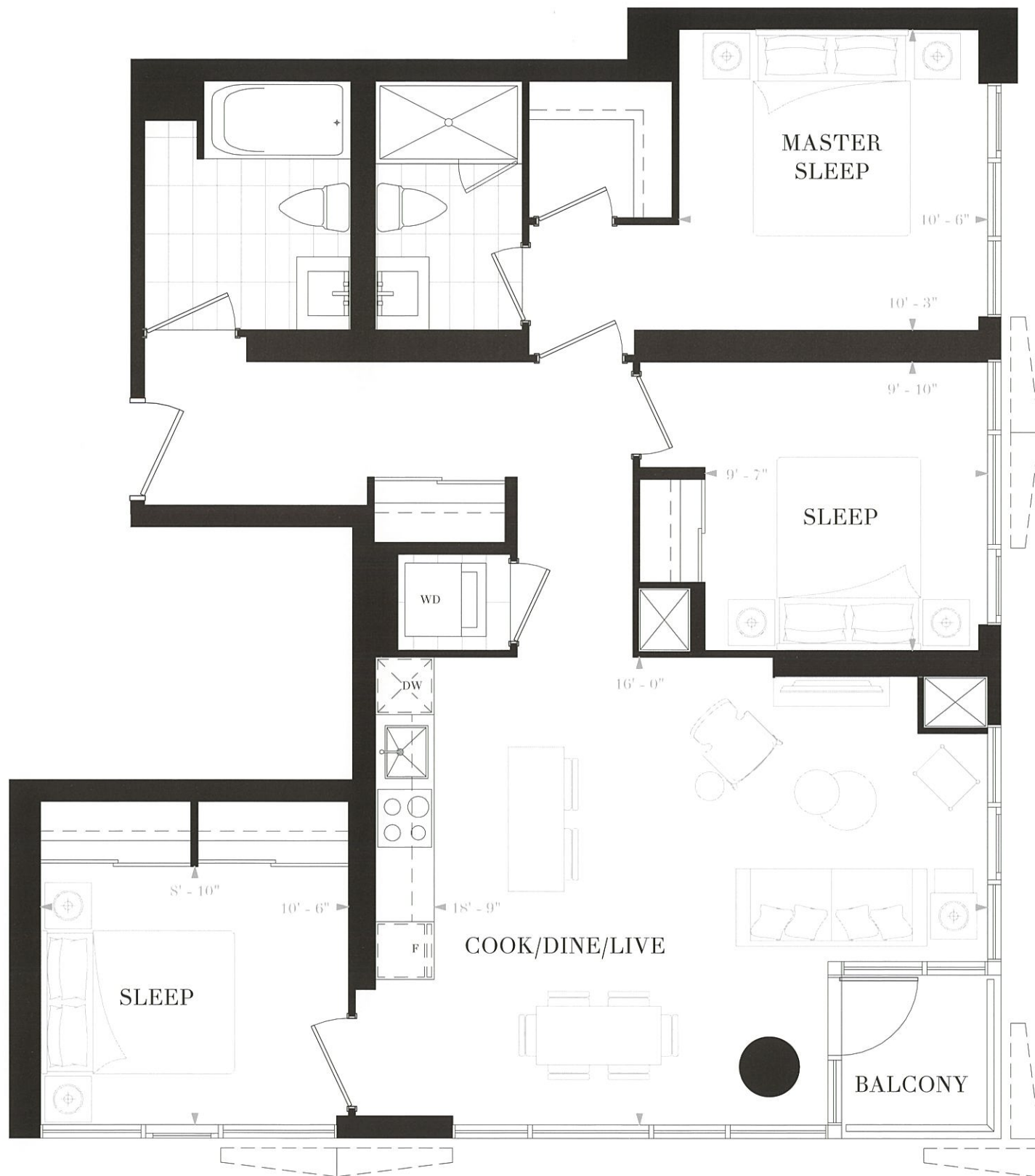


NOBU

RESIDENCES
TORONTO

SUITE E3G
3 BEDROOMS
2 BATHS

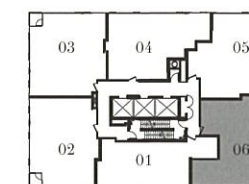
INTERIOR: 1036 SF
BALCONY: 28 SF
TOTAL: 1064 SF



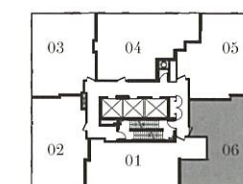
FLOORS 36-37, 40-41, 44-45



FLOORS 38-39, 42-43



FLOORS 36-41



FLOORS 42-45



NOBU
RESIDENCES
TORONTO

SUITE E3H

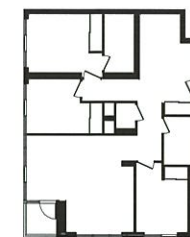
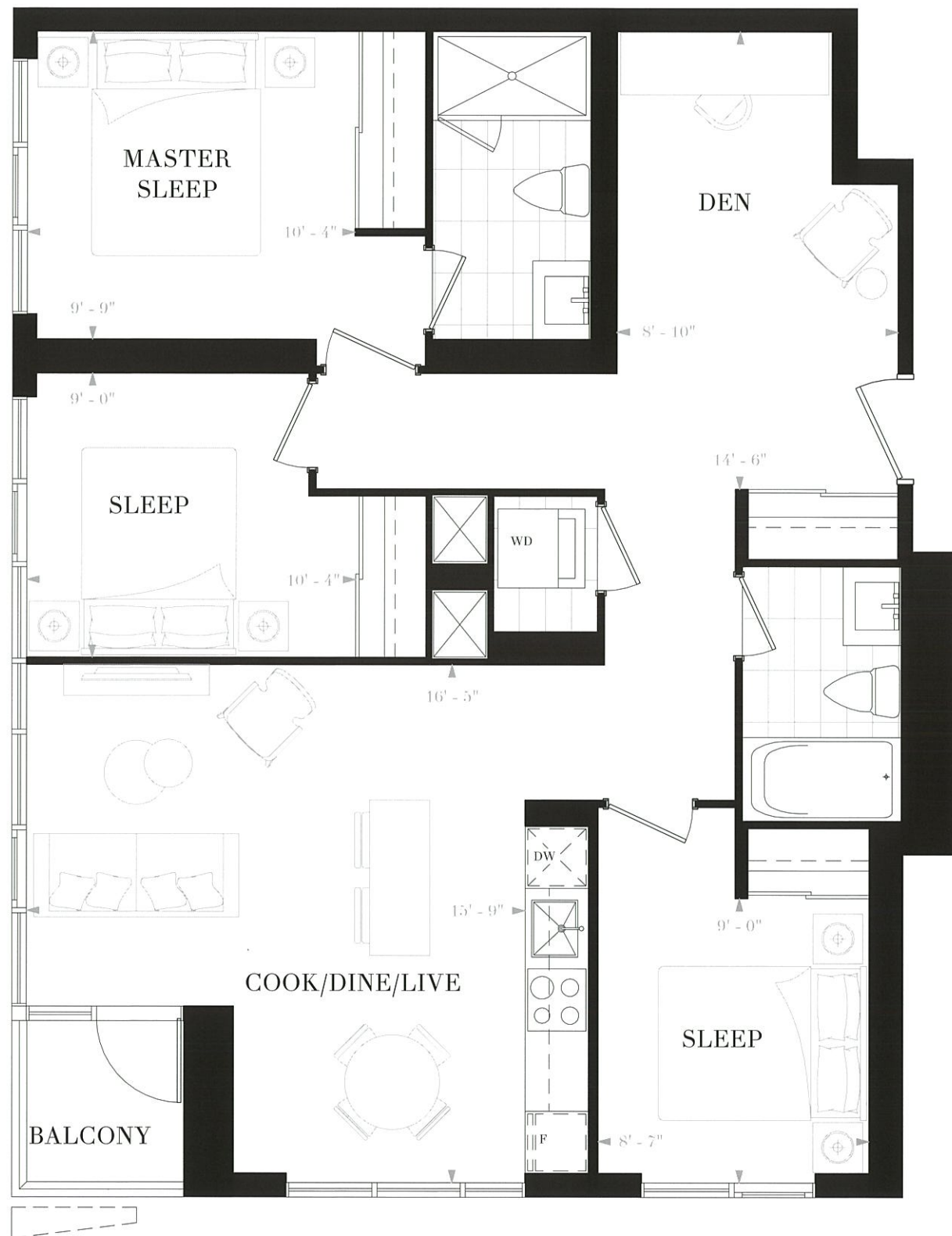
3 BEDROOMS & DEN

2 BATHS

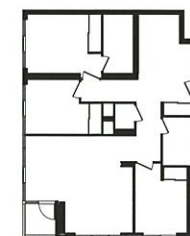
INTERIOR: 1049 SF

BALCONY: 28 SF

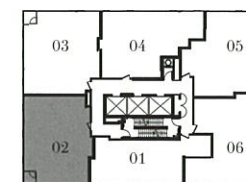
TOTAL: 1077 SF



FLOORS 36-37, 40-41



FLOORS 38-39



FLOORS 36-41

NOBURESIDENCES.CA

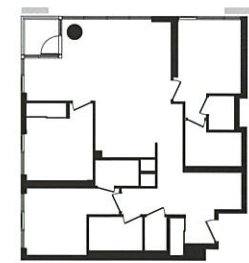
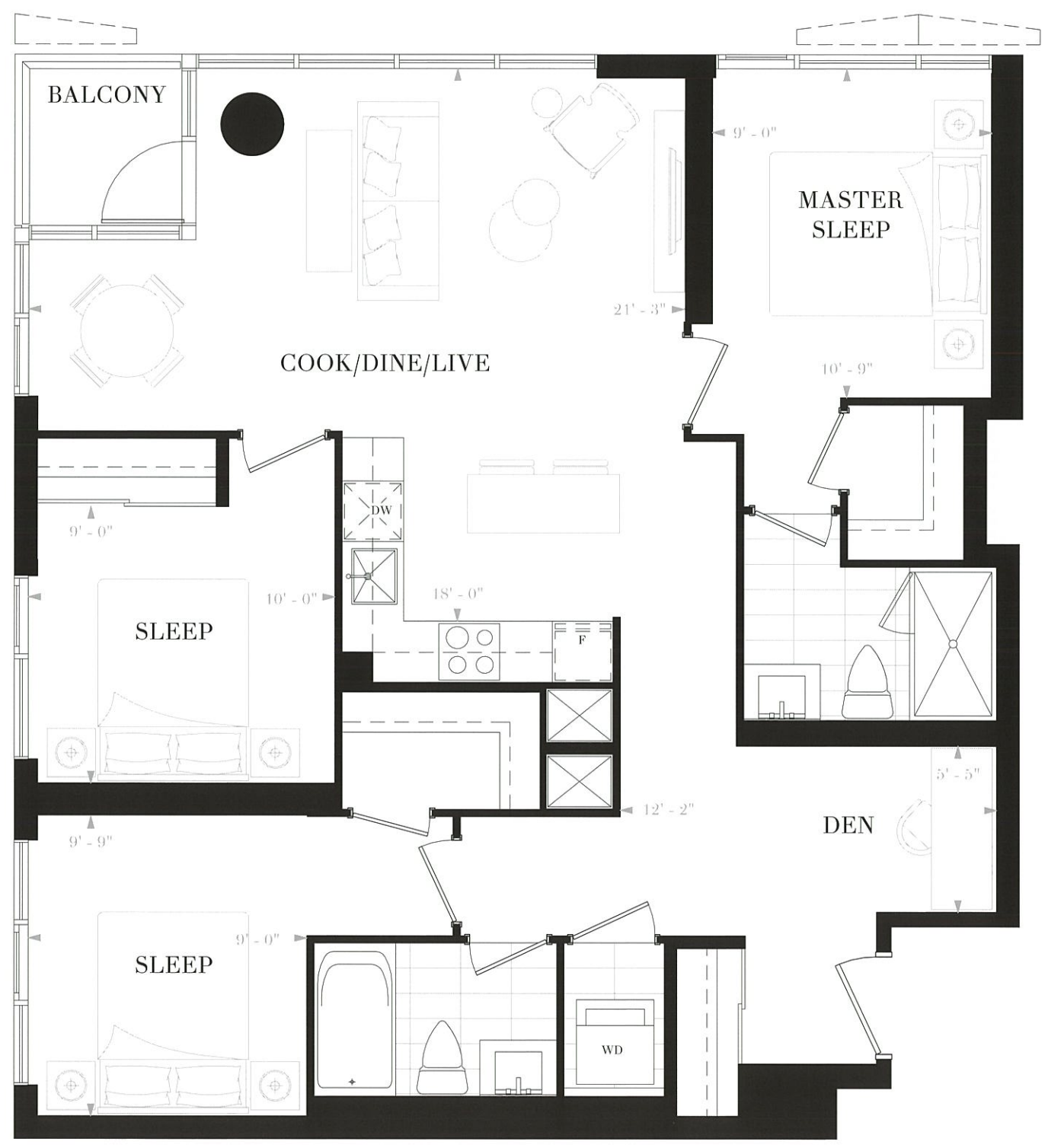
Any stated areas and/or dimensions shown are approximate only and subject to normal construction variances. Actual usable floor space may vary from any stated or depicted floor area. The layout of the suite may be reversed depending on the location of the unit within the project. Any furniture depicted is for illustration purposes only and does not necessarily reflect the electrical plan of the unit. Windows behind the cladding, installed as a design element, may be spandrel or vision glass. The view from or through the windows to the exterior may be partially obstructed by materials affixed to the exterior cladding of the building as part of an overall design element. Any and all sizes and/or specifications are subject to change without notice. All illustrations are artist's concept only. E. & O. E. May 2017



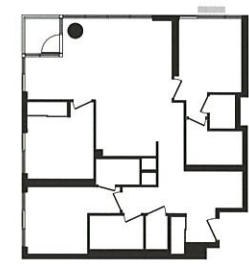
NOBU

RESIDENCES
TORONTO

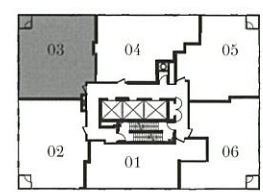
SUITE E3J
 3 BEDROOMS & DEN
 2 BATHS
 INTERIOR: 1091 SF
 BALCONY: 28 SF
 TOTAL: 1119 SF



FLOORS 36-37, 40



FLOORS 38-39



FLOORS 36-40

NOBURESIDENCES.CA

Any stated areas and/or dimensions shown are approximate only and subject to normal construction variances. Actual usable floor space may vary from any stated or depicted floor area. The layout of the suite may be reversed depending on the location of the unit within the project. Any furniture depicted is for illustration purposes only and does not necessarily reflect the electrical plan of the unit. Windows behind the cladding, installed as a design element, may be spandrel or vision glass. The view from or through the windows to the exterior may be partially obstructed by materials affixed to the exterior cladding of the building as part of an overall design element. Any and all sizes and/or specifications are subject to change without notice. All illustrations are artist's concept only. E. & O. E. May 2017

