



me2

MARKHAM & ELLESMERE LIVING

BROKER KIT



magnificently master planned perfectly designed

ME2 (Markham and Ellesmere Living) is phase 2 of this landmark community. Envisioned by **The Lash Group of Companies** phase 2 follows in the **success of Building 1**. With more designs, more panoramic views and more opportunity for you and your clients, we welcome you to **ME2**. **M2E** is a master planned community of condominiums, townhomes, shops and parks. Inspired by world class **Turner Fleisher Architects Inc.** and the award winning interior designers **Tanner Hill & Associates**, **ME2** has been perfectly designed. Building highlights include dramatic livable interiors, carefully designed amenities and a chic **private landscaped Miami-style rooftop oasis**. We welcome you to **ME2**!





SEASONAL POND AND WINTER SKATING RINK

arriving at me2 impressive entrance

ME2 is the continuation of this true neighbourhood renaissance in an area that is already surrounded by everything, transit, shops, schools, parks and more. This **master planned community** has been designed to be a self contained oasis, with its **tree lined courtyard entrance** and **scenic water feature**. Here landscape features abound, including our highlighted **seasonal pond and skating area**.





welcoming me2 first impressions

Here your new lifestyle begins the moment you arrive into the **grand designer-inspired lobby with concierge** and the dramatic coloured glass water feature. Colour and texture pallets include, white and grey porcelain floors with red stone inserts, polished lacquered panelled walls, marble and mirror columns and polished lacquer ceiling all complemented with designer detailed leather furniture. At **ME2** we understand that first impressions are lasting.

LASH
GROUP OF COMPANIES
60 years

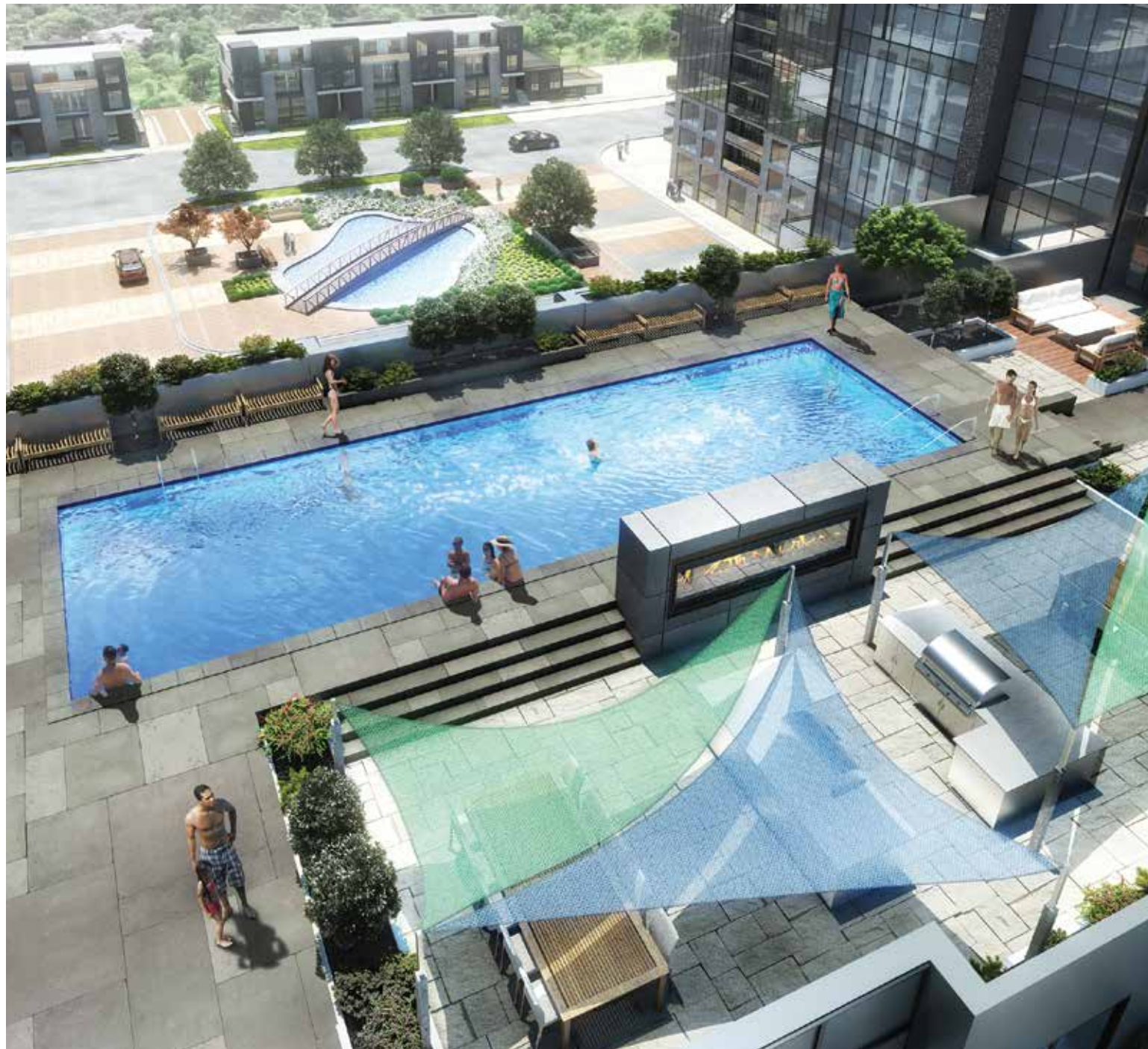




winning me2 sports lounge

At **ME2**, you can also enjoy a truly remarkable variety of amenities, from the interactive Sports Lounge with **games area, billiard table, bar and multiple plasma screens**, to **cutting-edge fully equipped fitness yoga area** - welcome to a winning lifestyle. Ground floor amenities also include **multi-purpose Demonstration Kitchen, Private Dining Room, spacious Party Room, Hollywood Style Theatre** and convenient **guest suites**. At **ME2**, it's all about you!





look up to me2 up on the roof

ME2 is designed to take you to great heights with its spectacular professionally landscaped **Miami-style Podium Rooftop Deck** highlighted by a custom **outdoor fireplace feature**. A breath of fresh air, the rooftop deck is a remarkable vantage point for connecting with the great outdoors in a completely private setting. Enjoy a refreshing swim in the **outdoor pool** and soak up the sun in the **tanning areas**. Entertaining is a breeze with spacious **private dining** and comfortable **lounge areas complete with BBQ stations**. Up on the roof is where you'll want to be. We invite you to look up to **ME2**.





	TTC STATION		COMMUNITY CENTRE		MOVIE THEATRE
	LIGHT RAIL TRANSIT		BIKE ROUTE		HOTEL
	GO TRAIN STATION		DRUG STORE		GAS STATION
	PARKS		HAIR SALON		RETIREMENT COMMUNITY
	GOLF COURSE		MALL		RESTAURANT
	HOSPITAL		APPAREL STORE		GO TRAIN LINE
	CHILD CARE CENTRE		STORE		LRT LINE
	SCHOOL		MOSQUE		BIKE PATH
	LIBRARY		CHURCH		

convenient to everything

Strategically located in close proximity to Hwy. 401, ME2 residents can be on their way both east and west of the City in just moments, and downtown Toronto is easily accessible via the Don Valley Parkway. The TTC is almost at your doorstep. While the GO Train System is minutes away. Here great schools abound, nearby is the University of Toronto Scarborough Campus and Centennial College along with a multiple choice of primary and secondary schools. Naturally the area offers parklands, bicycle trails and golfing nearby. Toronto's magnificent Scarborough Bluffs with its dramatic scenery and acres of lakefront parklands is a short drive away. Shopping is within walking distance and for those wishing greater choices the Scarborough Town Centre to the west is but minutes away. Isn't it time you got connected to ME2?



MOVE NEXT DOOR TO **me**

MARKHAM & ELLESMERE

ME2 FLOORPLANS:

- 1 BEDROOM
- 1 BEDROOM + DEN
- 2 BEDROOM + DEN





Lash & ME2

The roots of The Lash Group of Companies go back to 1955. From there, the company evolved into what is today one of Toronto's premiere residential builders. From striving to reach ever-higher standards of quality to raising the bar on design and construction to its focus on providing outstanding property management services Lash is committed to leading never following. Over the years the company has prided itself on its vision to see future potential in untapped neighbourhoods both in the GTA and in Florida. With its insightful ability for creating unique, inspired condominium lifestyles, the company today is proud to introduce ME2.

One need only to look at the many renowned condominium communities across Greater Toronto to see The Lash Group's commitment for establishing lasting value in its condominium residences.

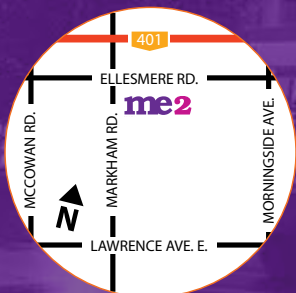
Recent Highlighted Projects: 66 Portland, 20 Stewart, 777 Steeles, 455 Adelaide West, The Fashion District Lofts, 500 & 530 St. Clair West and most recently The Rushton on St. Clair Avenue West, Cloud9 Condos in Etobicoke.

UNDER CONSTRUCTION: The Barrington at Bathurst & St. Clair.

NOW OPEN: Distinction in the Yonge & Eglinton neighbourhood.

lashgroup.ca







Presentation Centre

1151 Markham Road,
Scarborough, ON
M1H 2Y5

meliving.ca • 416.430.0003

follow our exciting **blog** or visit us on   @melivingcondos

Prices and specifications are subject to change without notice. Exclusive Listing Broker,
The Condo Store Realty Inc., Brokerage. Brokers Protected. E.&O.E. 2016.


GROUP OF COMPANIES