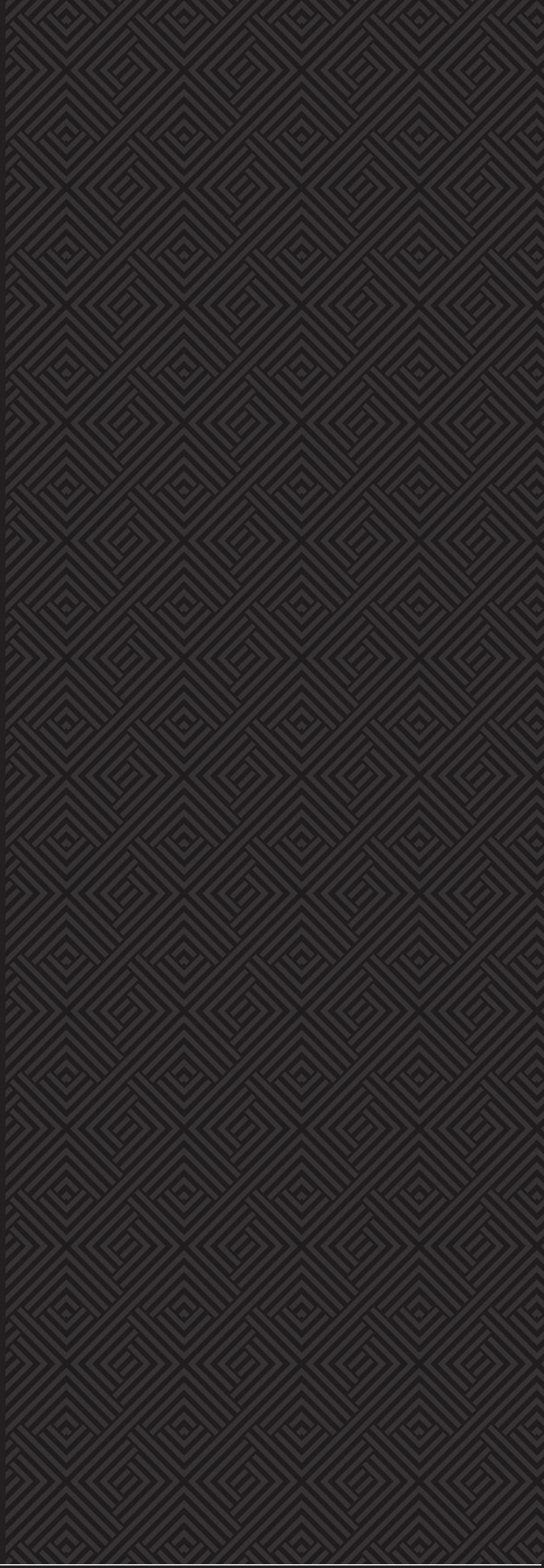




AT EPLACE

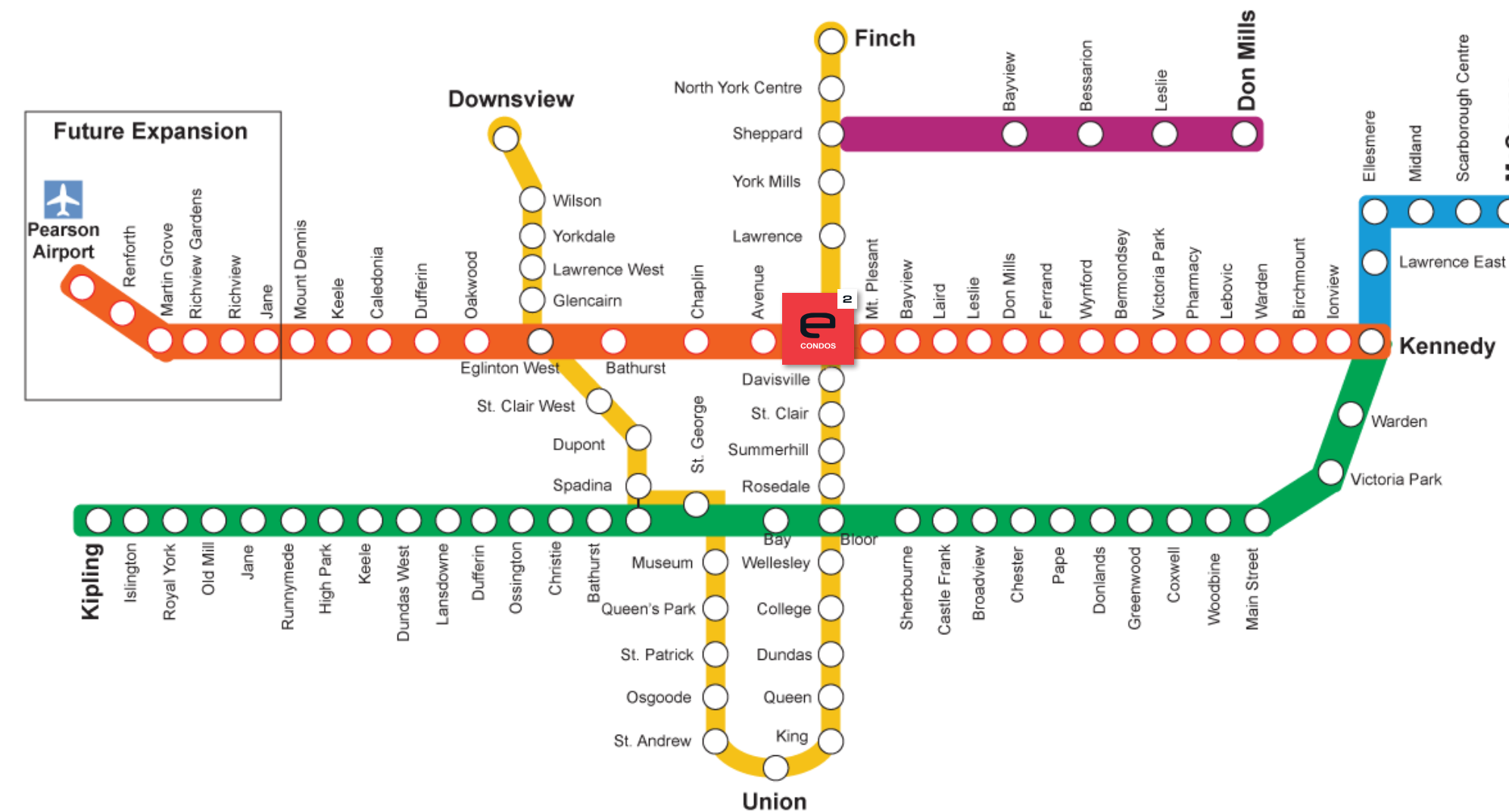


TORONTO'S FIRST...

CONDOS WITH DIRECT INDOOR CONNECTION TO EGLINTON SUBWAY AND THE NEW CROSSTOWN LRT.

- INSTANT INDOOR ACCESS TO TORONTO'S GREATEST NEW PUBLIC TRANSIT HUB.
- NEW CROSSTOWN LRT WILL RUN FROM MOUNT DENIS IN THE WEST TO KENNEDY IN THE EAST.
- THE LINE WILL HAVE 25 STATIONS WHEN IT OPENS IN 2021, THEN EVENTUALLY EXPAND TO 61 STATIONS.
- HUB FOR 79,000 DAILY COMMUTERS.
- ESTIMATED 100 MILLION TRIPS ANNUALLY BY 2031.

“ IDEAL FOR TRANSIT ORIENTED TORONTONIANS THAT WANT TO LIVE IN ONE OF TORONTO'S FINEST NEIGHBOURHOODS AND ONLY A 19 MINUTES SUBWAY RIDE TO DOWNTOWN. ”



AT EPLACE

CONNECTED TO YONGE EGLINTON CENTRE

e2 ALSO OFFERS DIRECT INDOOR CONNECTION TO ALL OF THE EXCEPTIONAL SHOPPING & DINING AT RIOCAN YONGE EGLINTON CENTRE.

• METRO SUPERMARKET

• LCBO

• CINEPLEX THEATRES

• INDIGO

• OVER 60 ADDITIONAL SHOPS AND RESTAURANTS



CONNECTED TO ePLACE

ePLACE IS A VISIONARY NEW LIVE, WORK, PLAY COMMUNITY

UPON COMPLETION, PHASE 1 ePLACE WILL HOLD 1M SQ.FT OF RESIDENTIAL, COMMERCIAL AND RETAIL SPACE AND WILL BE HOME TO TD'S NEW FLAGSHIP OFFICE, PI CO, AND OTHER GREAT AMENITIES.

E2 CONDOS IS THE NEXT PHASE OF THE EPLACE SUCCESS STORY THAT SOLD OUT IN 2015 AND WILL ADD ANOTHER 400,000 SQ. FT. AND OVER 450 UNITS.

“

E2 CONDOS IS A HUGE SUCCESS STORY AND SOLD OUT IN 2015 WITH RECORD PRICES FOR THE MID-TOWN NEIGHBOURHOOD. ITS REPUTATION AND ARCHITECTURE ARE WELL KNOWN IN THE CITY.

”

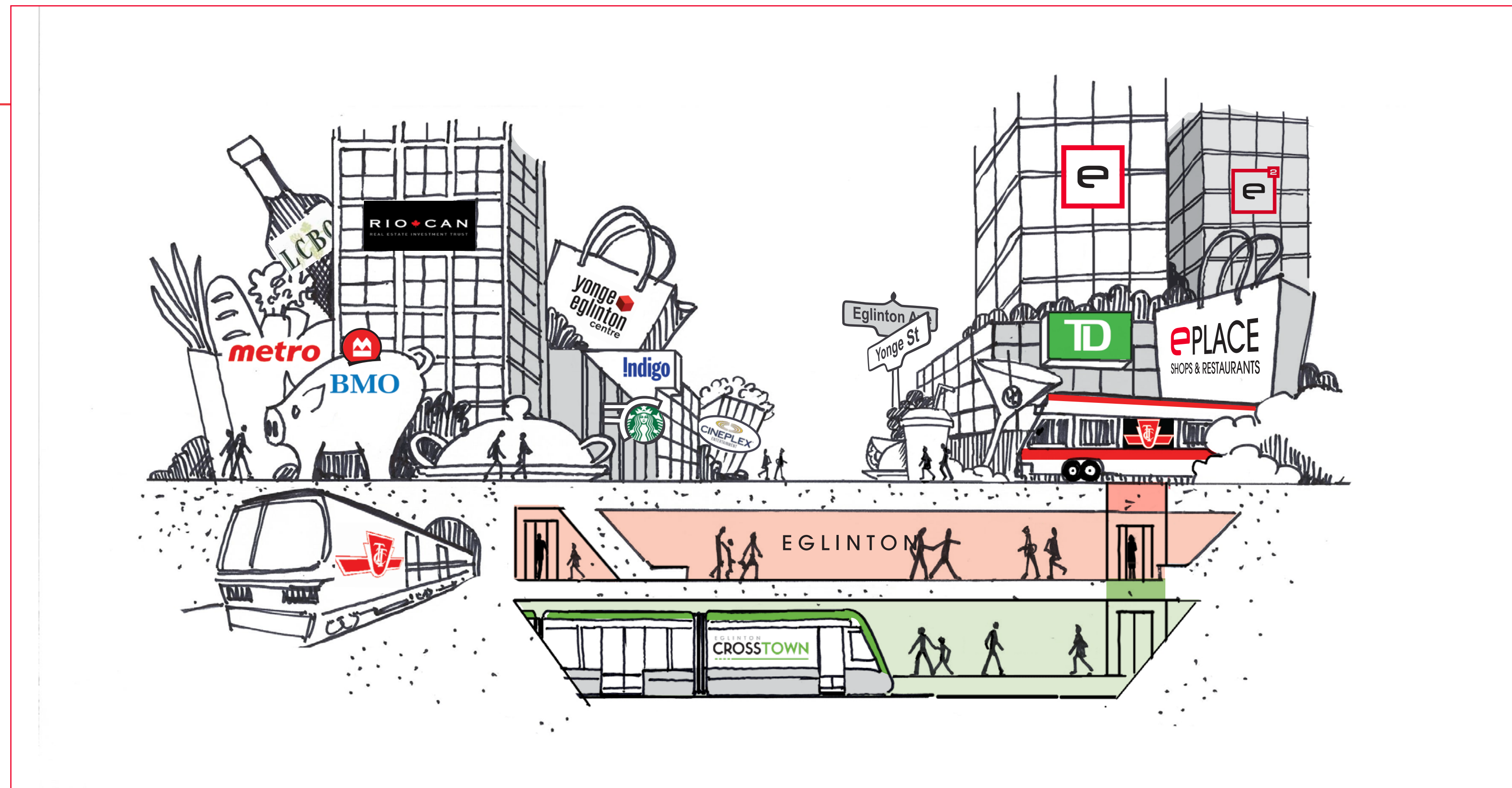


AT ePLACE

METROPIA



CONNECTED TO CONVENIENCE



AT **ePLACE**

METROPIA



CONNECTED TO TORONTO'S TOP 3 UNIVERSITIES:

U OF T, RYERSON AND YORK

DIRECT INDOOR SUBWAY ACCESS MAKES
IT EASY TO GET TO TORONTO'S THREE TOP
UNIVERSITIES ALL IN UNDER 30 MINUTES.

RYERSON STUDENT POPULATION APPROX.
40,000; 15 MINUTE SUBWAY RIDE.

YORK STUDENT POPULATION APPROX..
53,000; ABOUT 30 MINUTE SUBWAY RIDE
WHEN THE EGLINTON CROSSTOWN IS
COMPLETED.

U OF T STUDENT POPULATION APPROX.
60,000; 19 MINUTE SUBWAY RIDE.



AT EPLACE

METROPIA



CONNECTED TO PRIME NEIGHBOURHOODS

A CENTRAL HUB FOR TORONTO'S MOST AFFLUENT NEIGHBOURHOODS WITH AN AVERAGE MEDIAN INCOME OF \$147,862
(ALMOST DOUBLE THE TORONTO MEDIAN (\$69,329))



SURROUNDED BY FOREST HILL, DEER PARK, MOORE PARK, DAVISVILLE VILLAGE, LEASIDE, LAWRENCE PARK AND LYTTON PARK

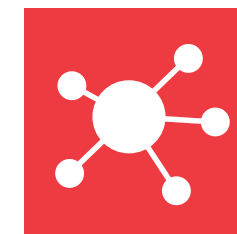


COVETED LOCATION FOR EDUCATED YOUNG PROFESSIONALS AND FAMILIES

72% OF POPULATION COMPRISED OF FAMILIES (2011 CITY OF TORONTO NEIGHBOURHOOD CENSUS)



HUB FOR 79,000 DAILY TRANSIT RIDERS



2015 FOOT TRAFFIC 82,000 — PROJECTED TO RISE TO 150,000 BY 2025!



“ YONGE EGLINTON AVG. HOME PRICE **\$1,401,837** ”



AT EPLACE

METROPIA





2

AT ePLACE



METROPIA



MIDTOWN'S MOST TRUSTED TEAM

METROPIA AND CAPITAL DEVELOPMENTS HAVE CREATED MORE THAN 2,500 UNITS COMBINED IN THE YONGE AND EGLINTON NEIGHBOURHOOD.

PROUD TO BE COLLABORATING ON THIS LATEST EXCITING PROJECT!

METROPIATM



155 REDPATH



150 REDPATH



AT **EPLACE**

METROPIATM



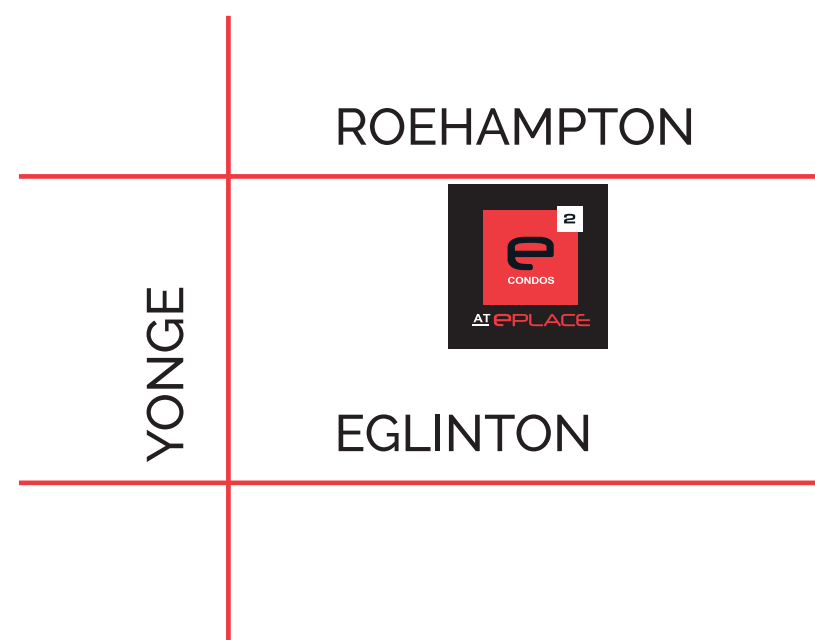
TOWERING ABOVE YONGE & EGLINTON, A MAGNIFICENT NEW HI-RISE RESIDENCE

*BUILDING WILL
FEATURE OVER
450 UNITS.*

*1 BED, 1 BED + DEN,
2 BED,
2 BED + DEN
& 3 BED.*

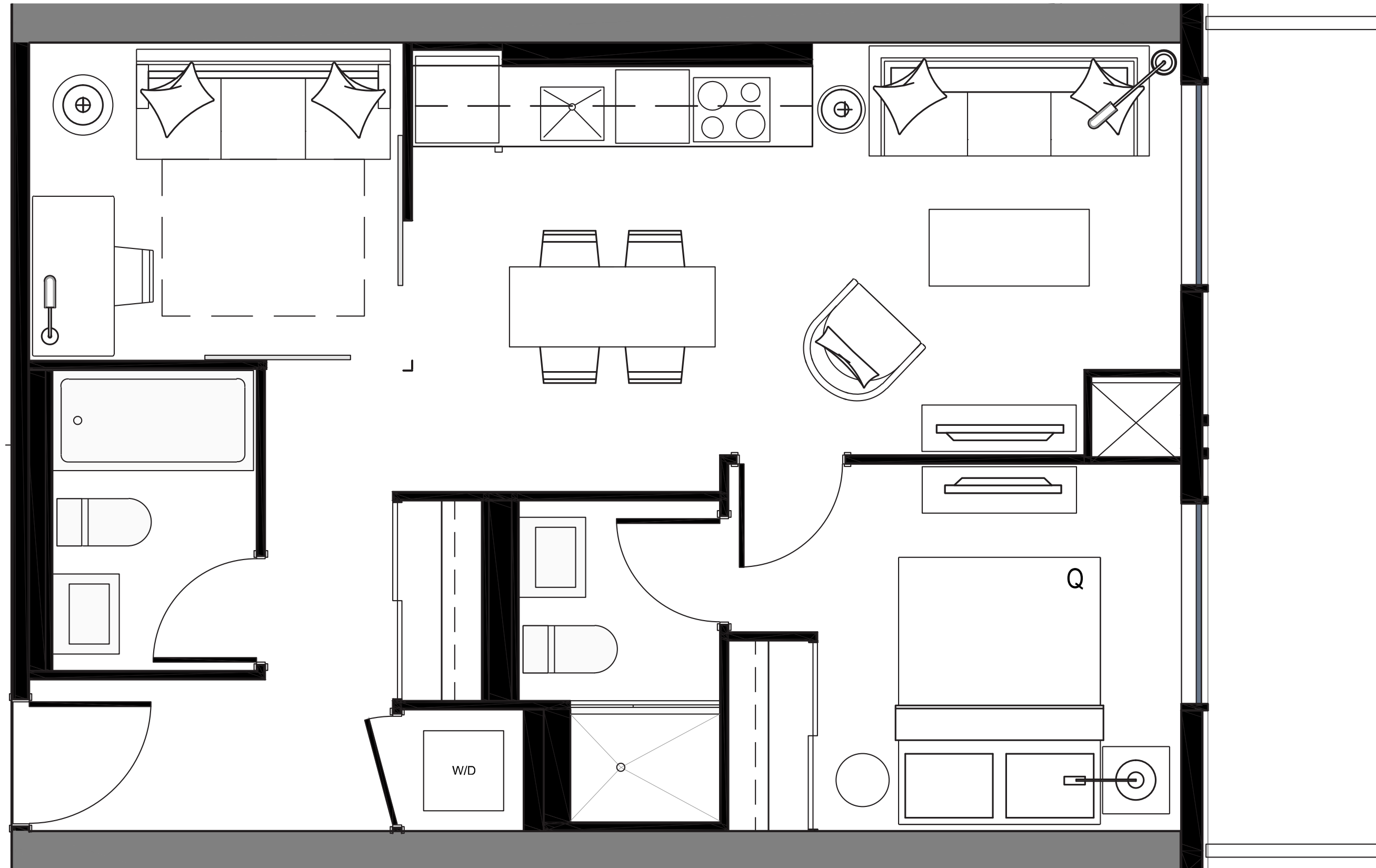
*PREMIUM
FEATURES
& FINISHES.*

*INNOVATIVE
WIDE-SHALLOW
FLOOR PLANS
INCLUDING
DESIRABLE SPLIT
2 BEDROOMS.*



SUITE 01

613 SF / ONE BEDROOM + FLEX



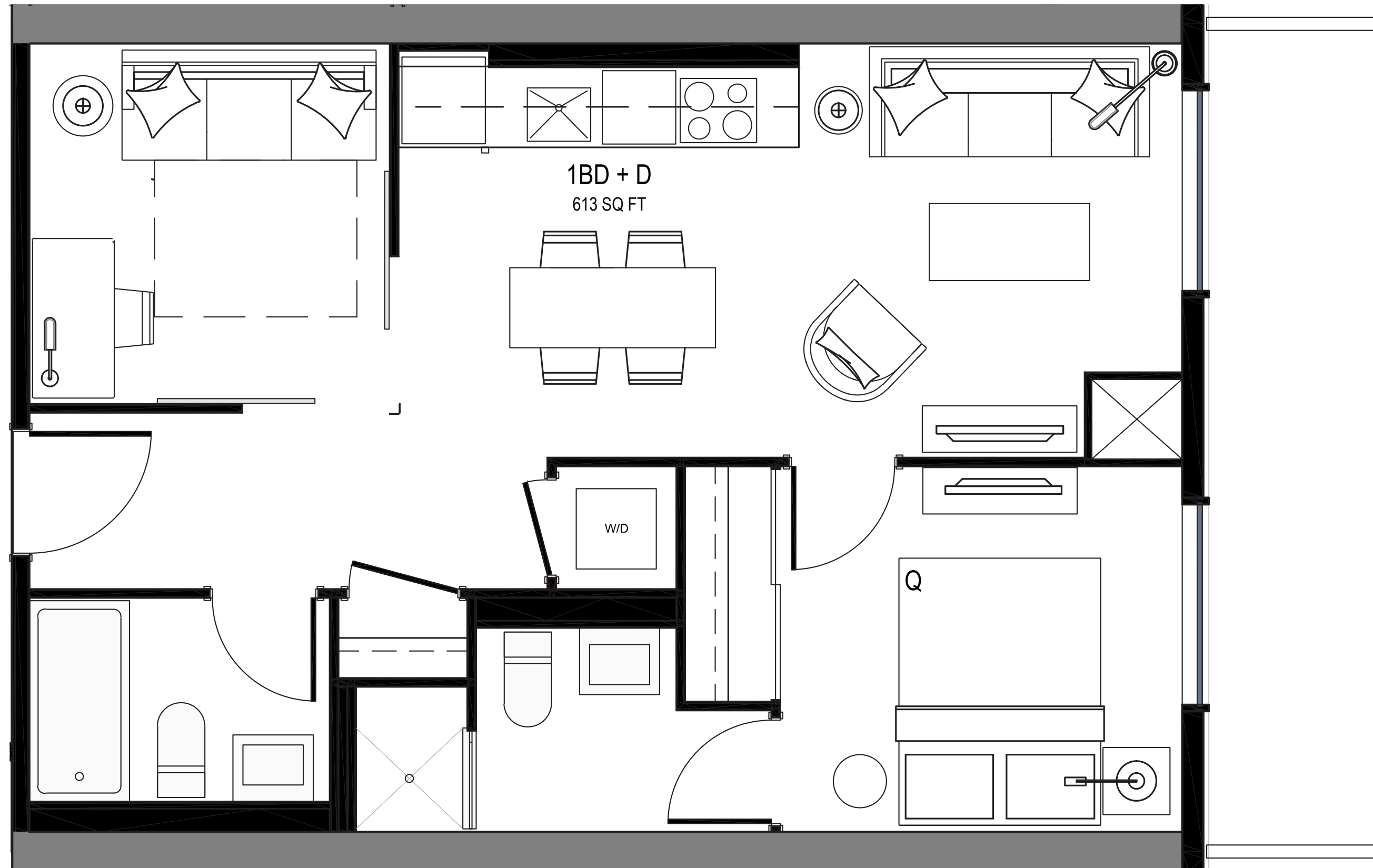
AT EPLACE

METROPIA



SUITE 02 & 10

613 SF / ONE BEDROOM + FLEX



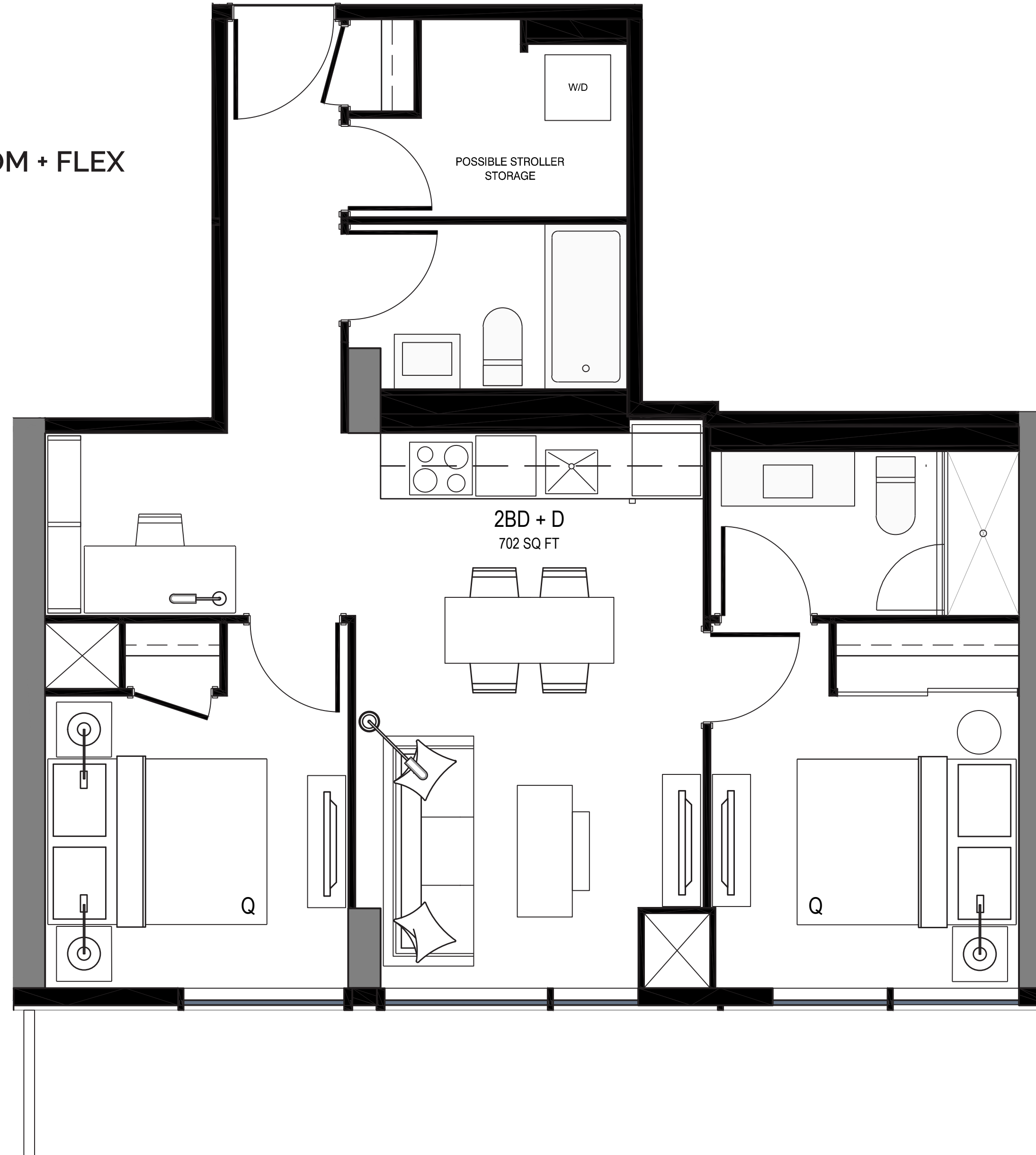
AT EPLACE

METROPIA



SUITE 04

702 SF / TWO BEDROOM + FLEX



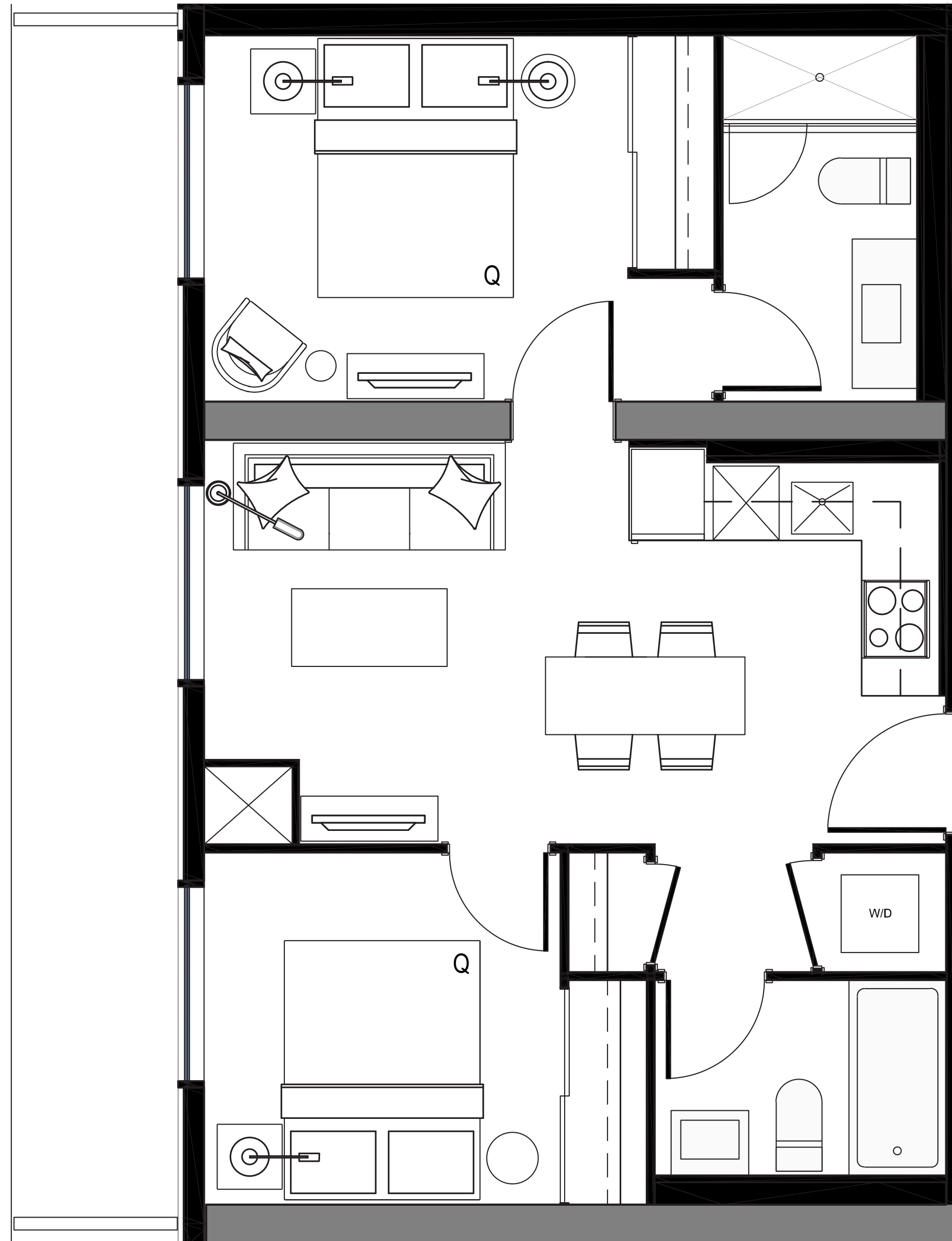
AT **EPLACE**

METROPIA



SUITE 06 & 07

619 SF / TWO BEDROOM



AT EPLACE

METROPIA



MIDTOWN'S BEST BUILDING AMENITIES

FEATURING OVER 13,734 SQ. FT. OF INDOOR AMENITY SPACE.

7,448 SQ. FT. OF OUTDOOR TERRACE AND 4,757 SQ. FT. OF OUTDOOR PARK.

INNOVATIVE KIDS ZONE & TEEN ZONE SPACES.

EXPANSIVE OUTDOOR TERRACE WITH BBQ AREA.

GAMES ROOM, OUTDOOR THEATRE, DOG SPA AND MORE!

ADDITIONAL INCREDIBLE AMENITIES TO BE ANNOUNCED SOON!

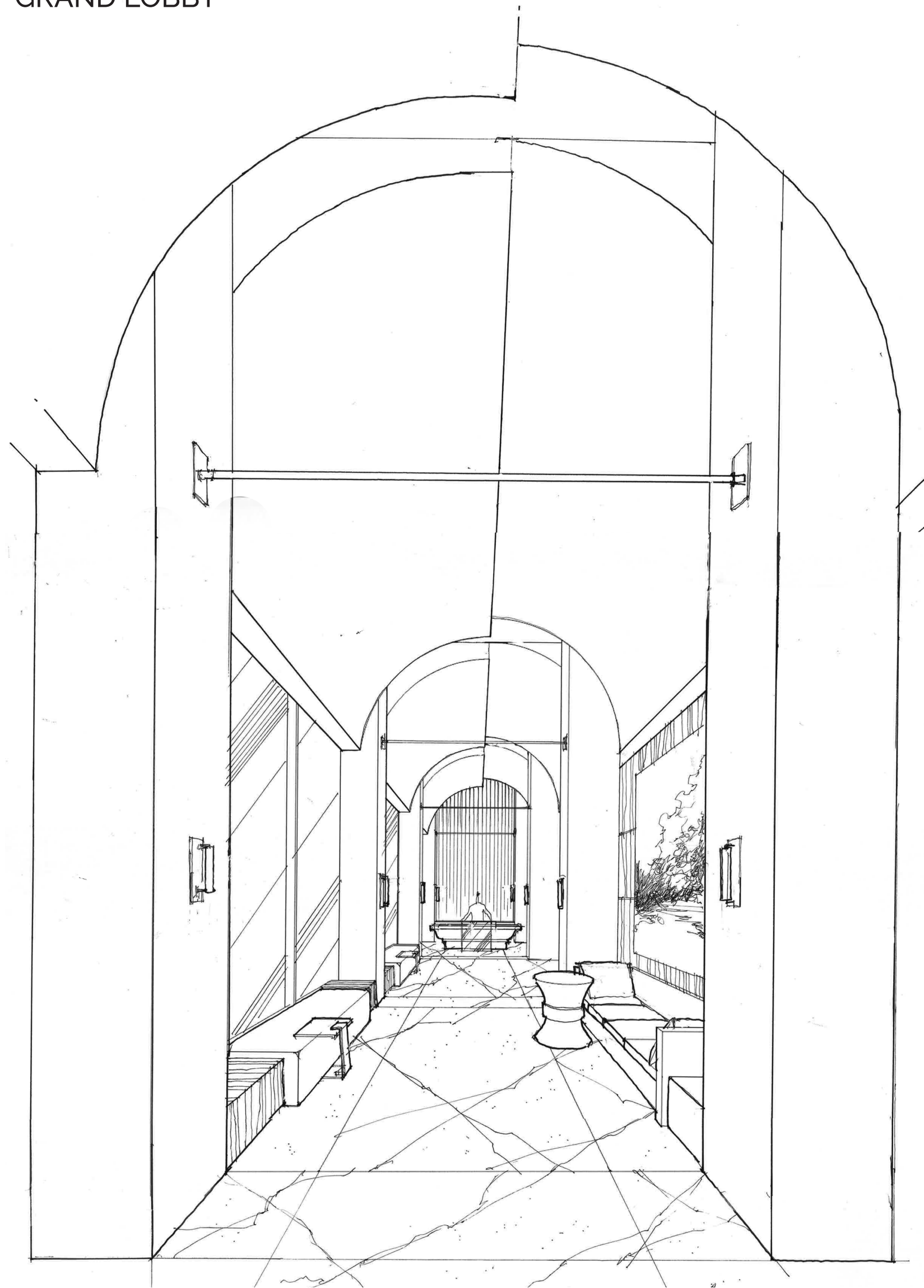


AT EPLACE

METROPIA



GRAND LOBBY



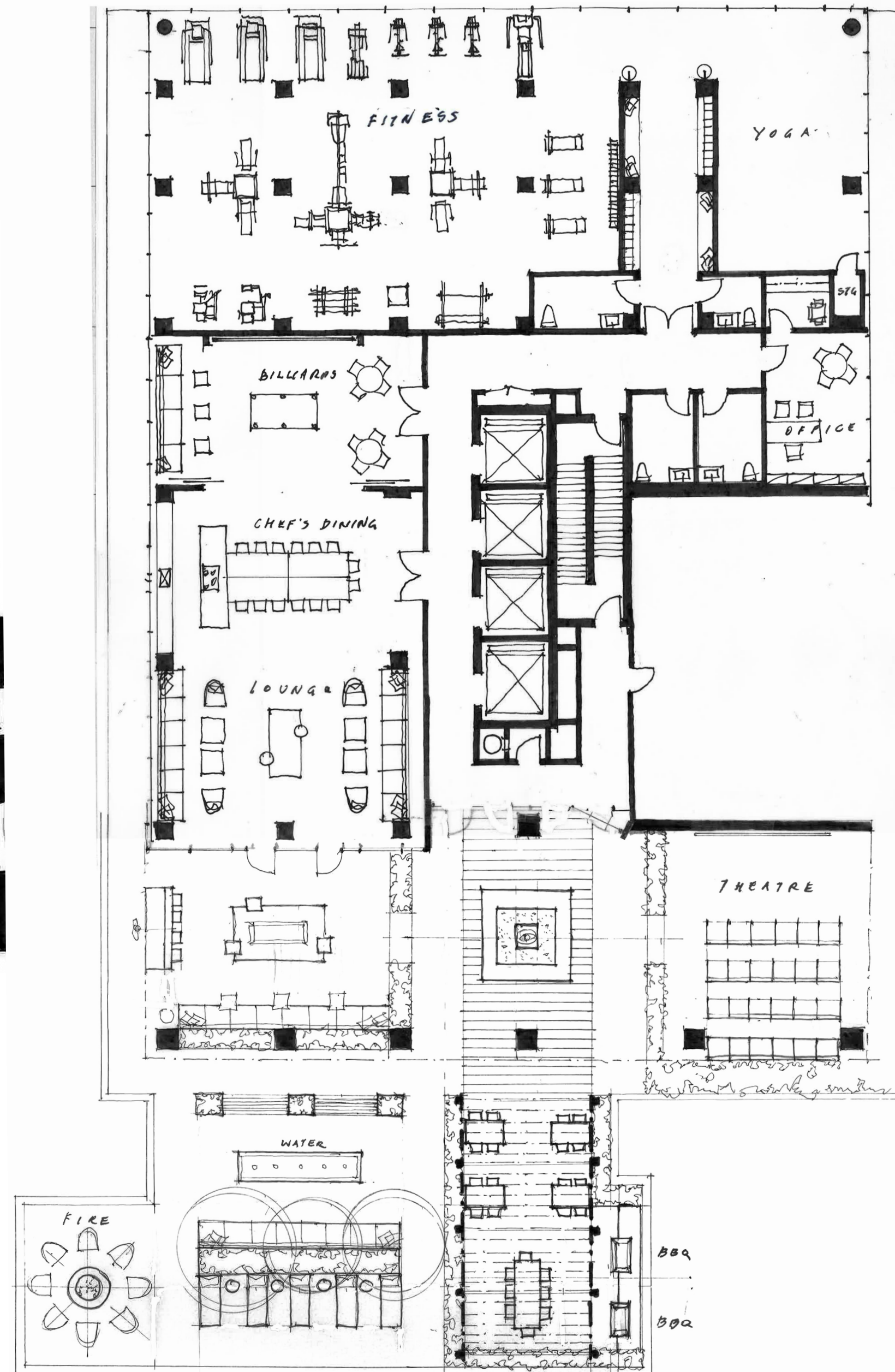
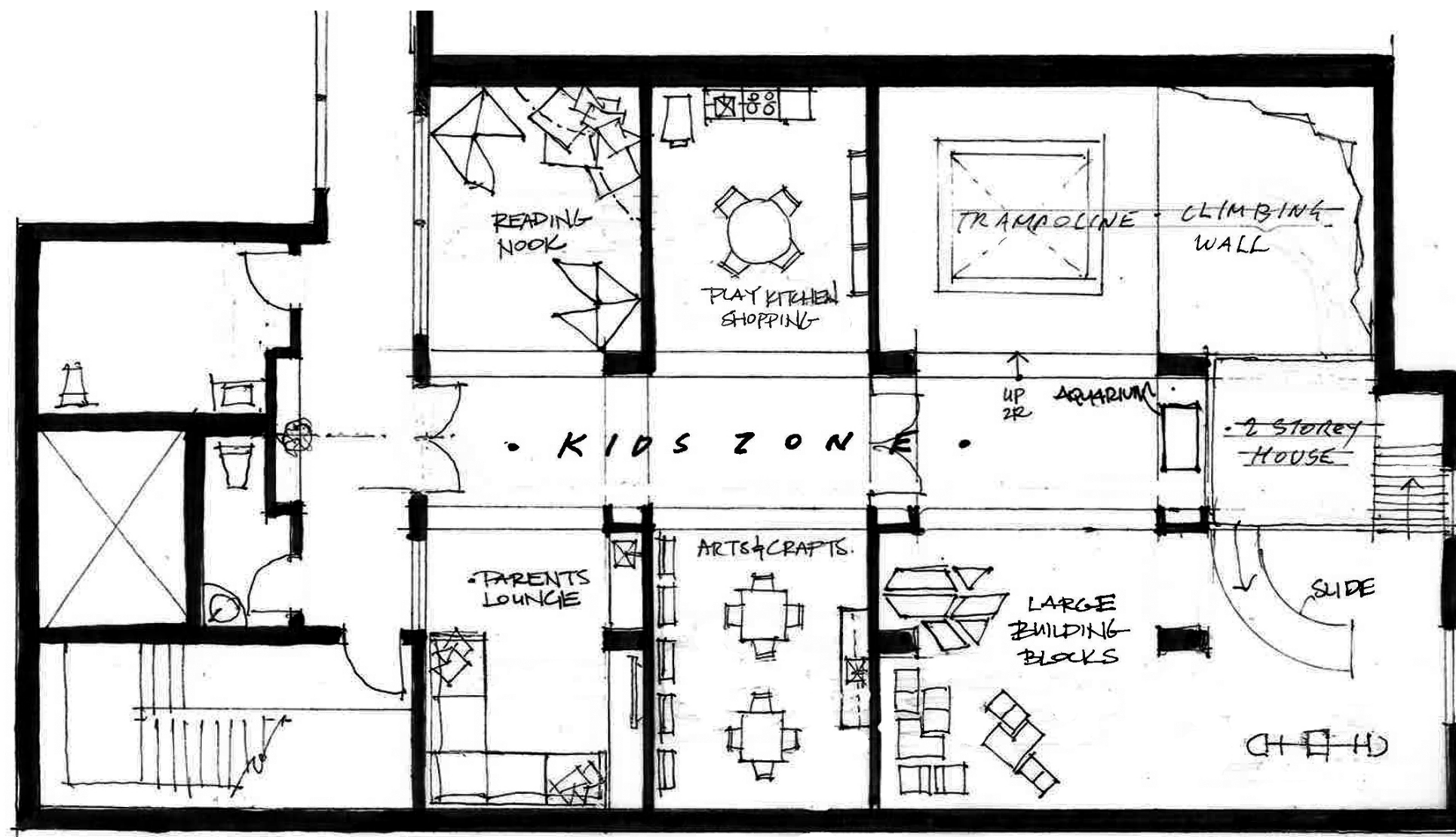
GRAND LOBBY



AT EPLACE

METROPIA





AT EPLACE

METROPIA





AT EPLACE

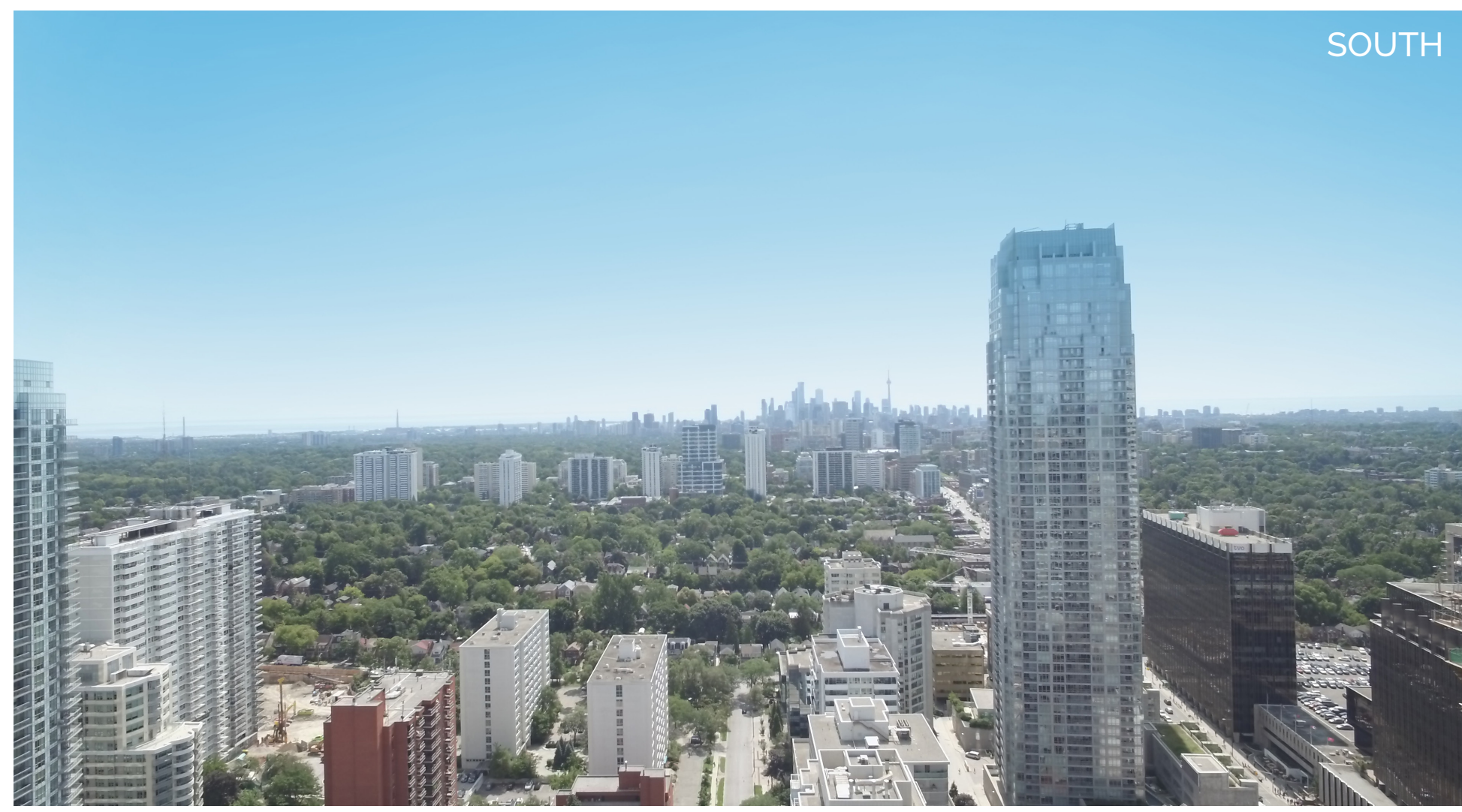
SPECTACULAR CITY VIEWS

SOUTH FACING SUITES OVERLOOKING THE DOWNTOWN CITY SKYLINE.

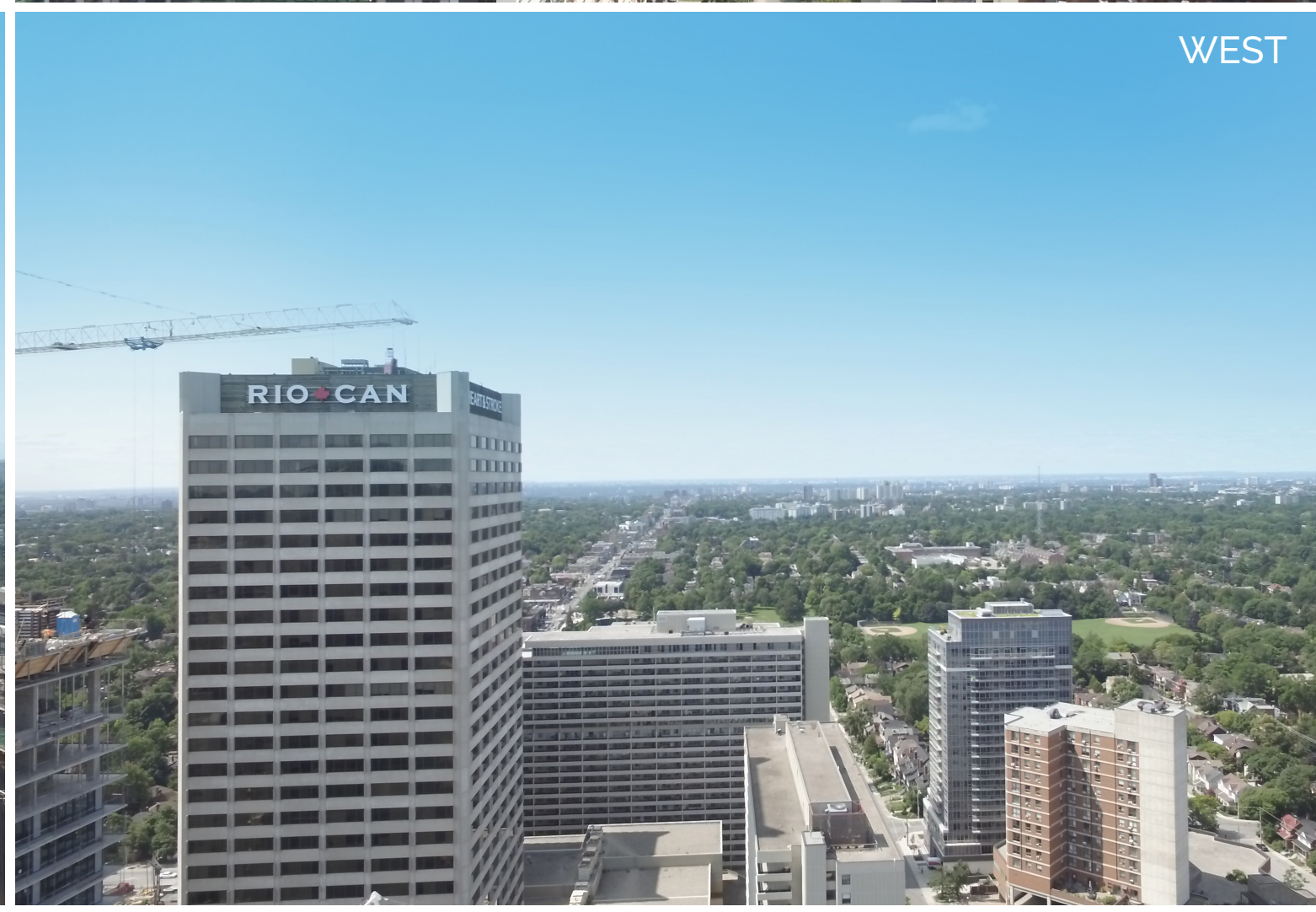
SOUTHEAST AND EAST FACING SUITES OVERLOOKING THE NATURAL BEAUTY OF THE ROSEDALE VALLEY & DON VALLEY.



EAST



SOUTH



WEST

COMING SOON

FROM CAPITAL DEVELOPMENTS & METROPIA,
A NEW PROJECT LOCATED AT BLOOR & DUFFERIN

- SUBMITTING OUR REZONING APPLICATION THIS MONTH
- PROPOSAL FOR 1.8 MILLION SQ. FT. OF GFA
- OVER 2,000 RESIDENTIAL UNITS, A NEW PARK, RETAIL, FIRST PROVINCIALLY FUNDED COMMUNITY HUB AND A VISIONARY COMMUNITY PLAN.
- CREATING A NEW LIFESTYLE DESTINATION STEPS FROM DUFFERIN SUBWAY STATION



AT EPLACE



THE e2 SALES TEAM

IRA NAIDENOVA
SALES REPRESENTATIVE
TEL: 416-923-4621
CELL: 416-894-0231

PHILIP A. LEBOEUF
SALES REPRESENTATIVE
TEL: 416-923-4621
CELL: 416-432-0007

E2CONDOS@BAKERSALES.INFO



AT **EPLACE**

METROPIA



STAY TUNED FOR YOUR INVITATION
TO e2 PLATINUM TEAM LAUNCH

THANK YOU



AT EPLACE

METROPIA

