

EDENBRIDGE™  
KINGSWAY

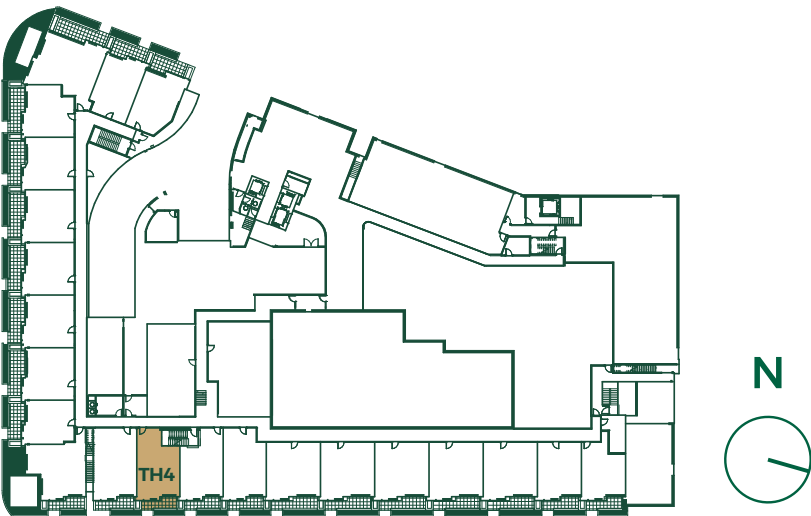
Townhomes

TOWNHOMES

# TOWNHOME 4

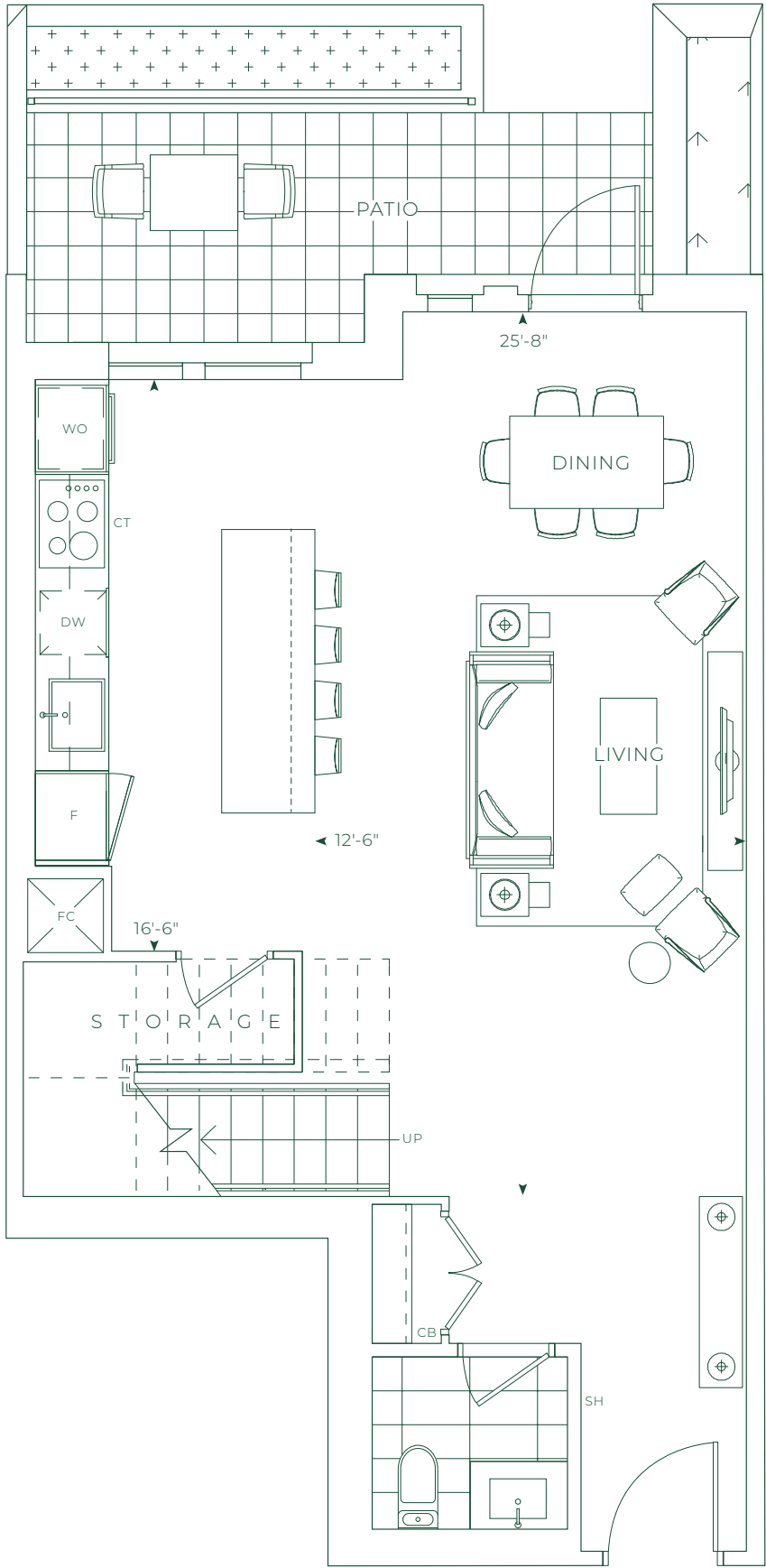
1,430 SQ.FT.

2 BEDROOMS, 2.5 BATHROOMS

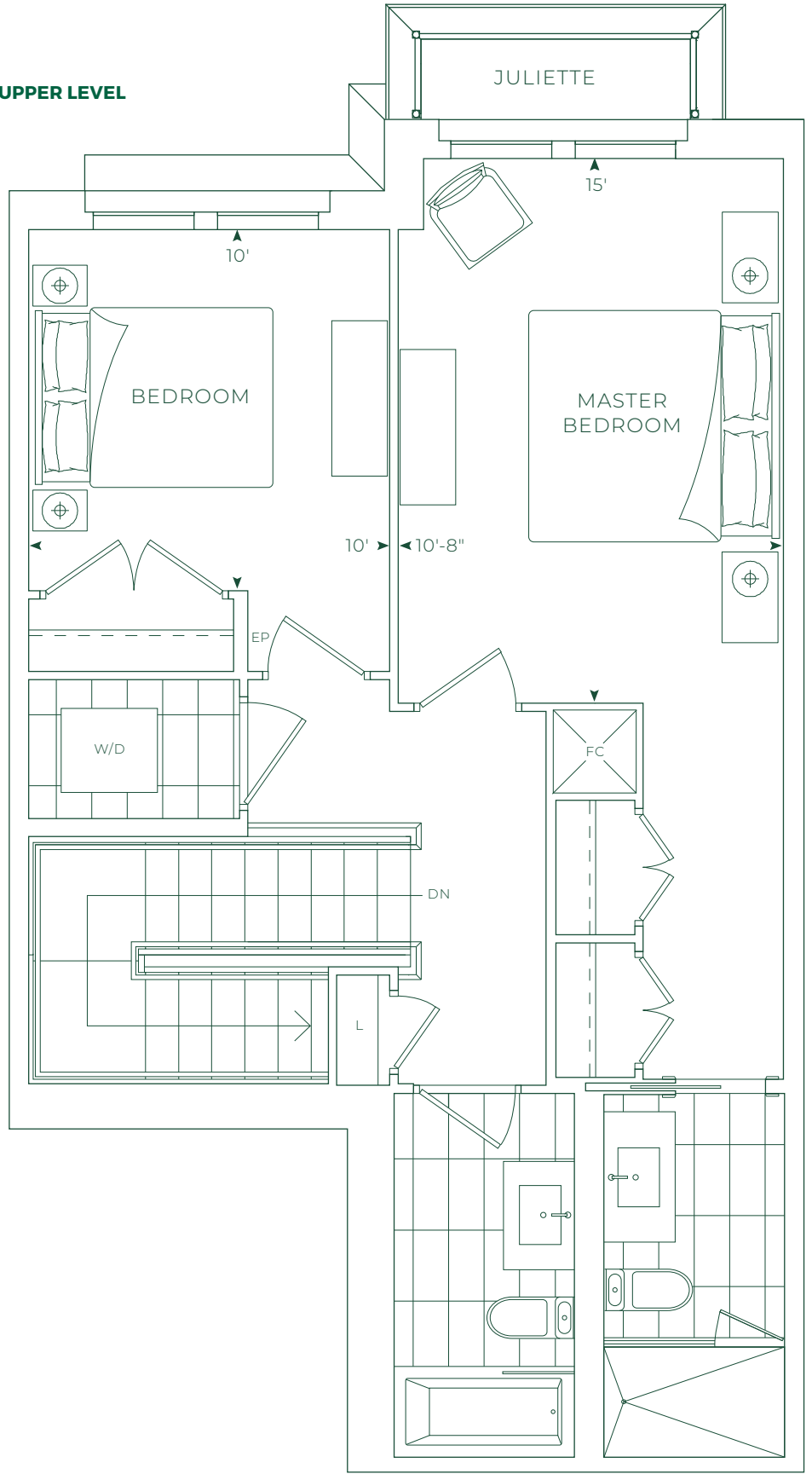


GROUND FLOOR

LOWER LEVEL



UPPER LEVEL

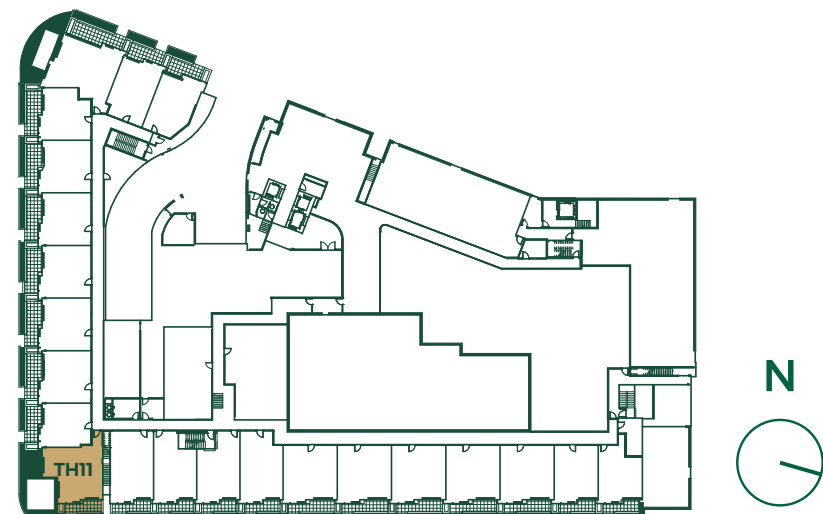


© Tridel 2019. ® Tridel, "D" design, Tridel Built for Life, Tridel Built for Life Design, and Tridel Built Green Built for Life are registered Trademarks of Tridel Corporation. Project names and logos are Trademarks of their respective owners. All rights reserved. Building and view not to scale. All dimensions are approximate and subject to normal construction variances. Dimensions may exceed the usable floor area. Some features and finishes herein are upgrades or are for illustrative purposes only and may not be available. Furniture is displayed for illustrative purposes only and does not necessarily reflect the electrical plan for the suite. Suites are sold unfurnished. Balcony, terrace and facade variations may apply, contact a sales representative for further details. Furniture, BBQs and planter locations on balcony/terraces are for illustration purposes only and subject to change. Illustrations are artist's concept only. Sizes and specifications subject to change without notice. E. & O.E. June 2019.

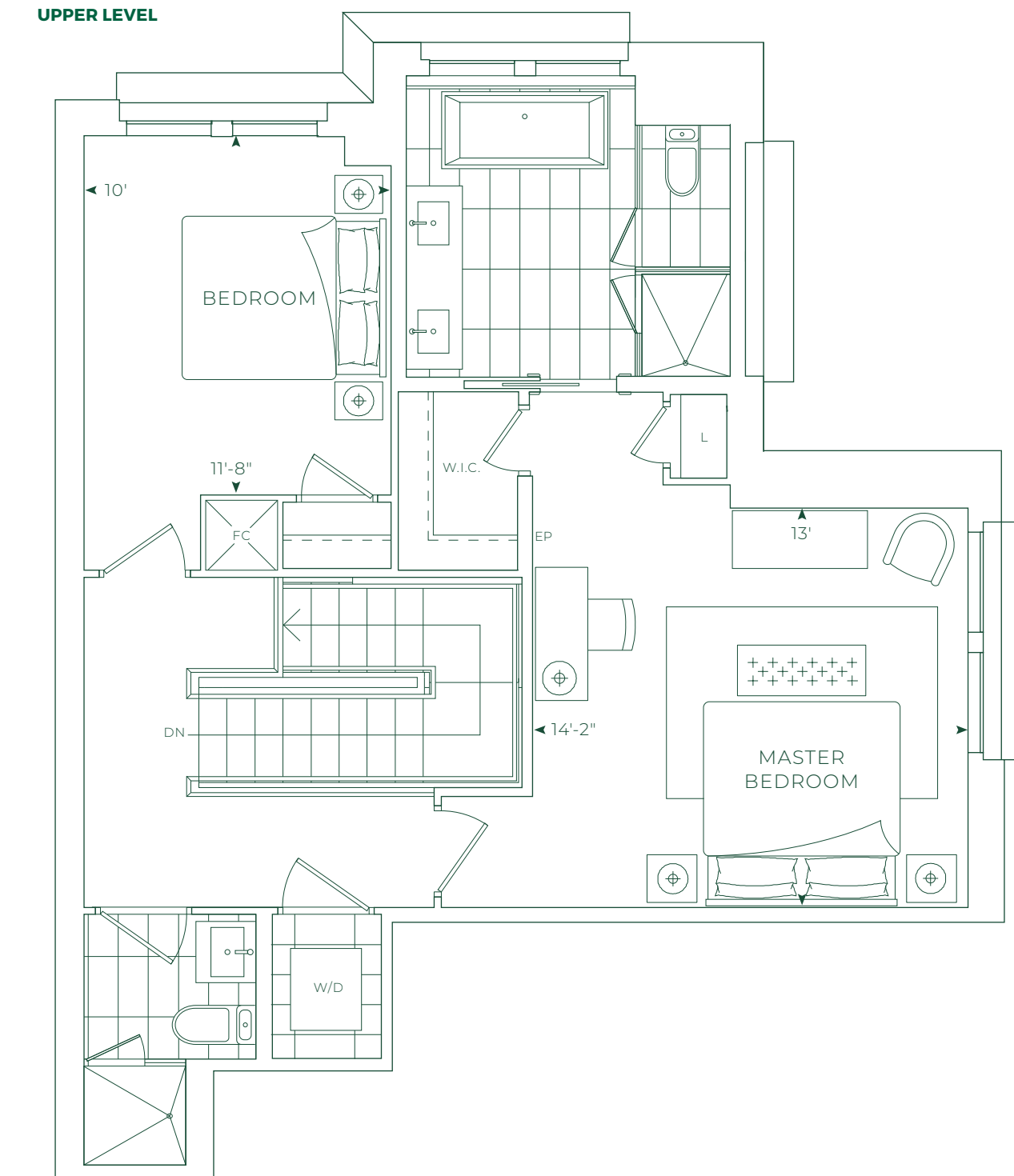
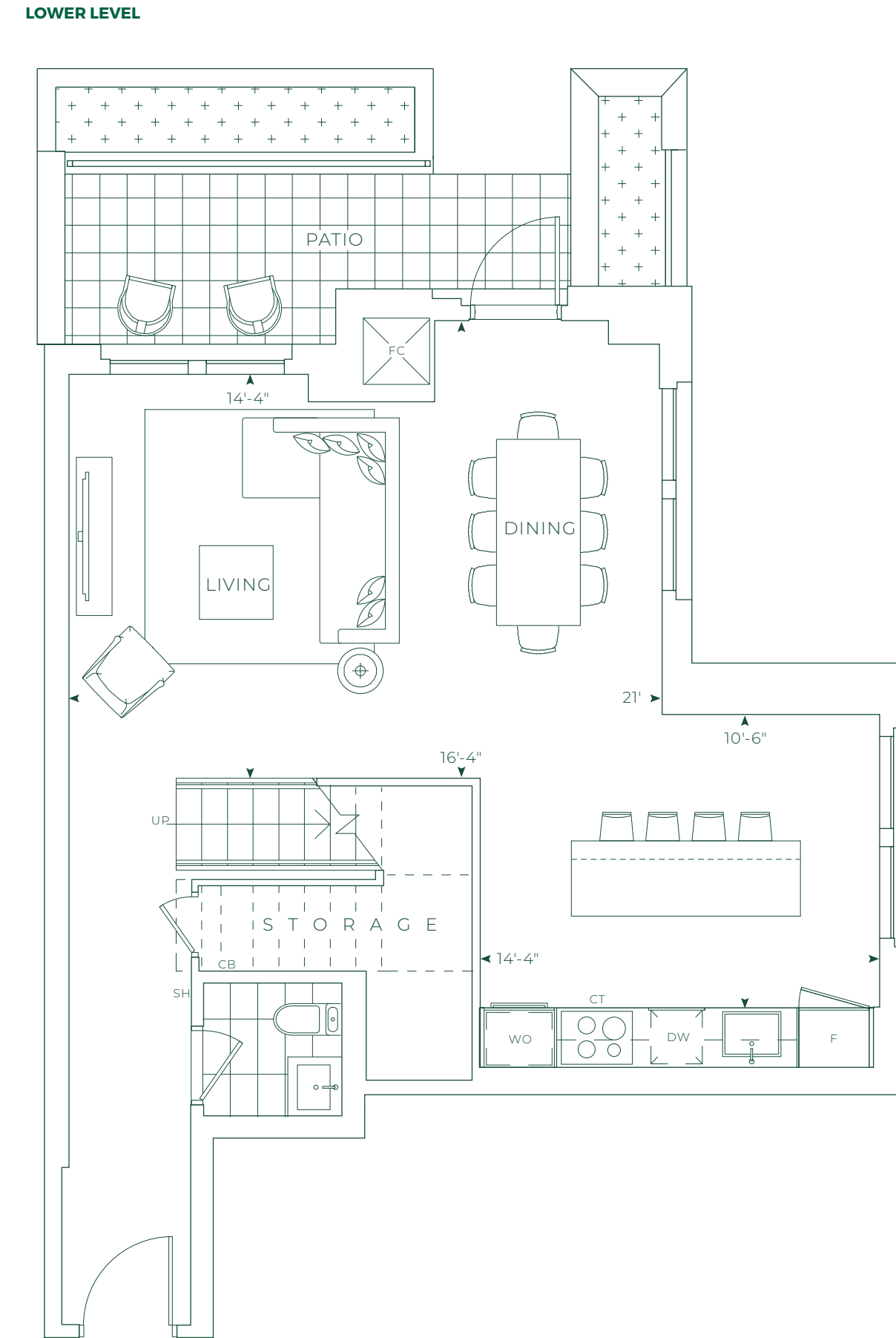
# TOWNHOME 11

1,660 SQ.FT.

2 BEDROOMS, 2.5 BATHROOMS



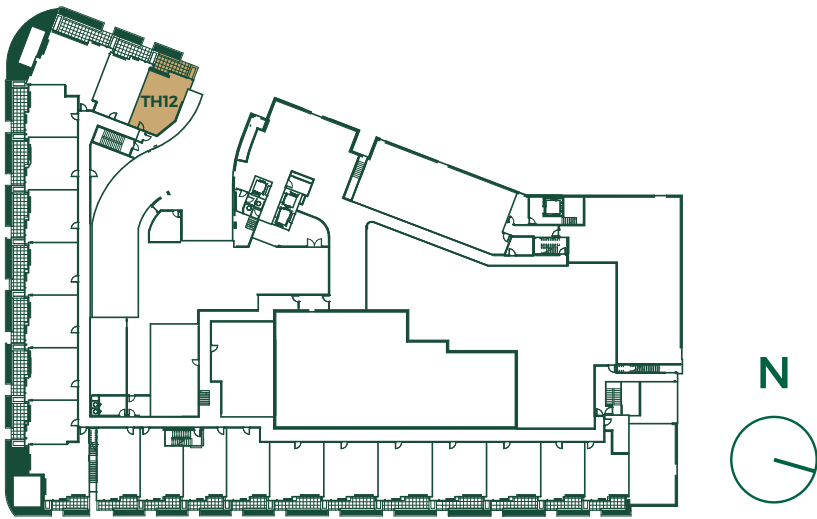
## GROUND FLOOR



# Townhome 12

1,800 SQ.FT.

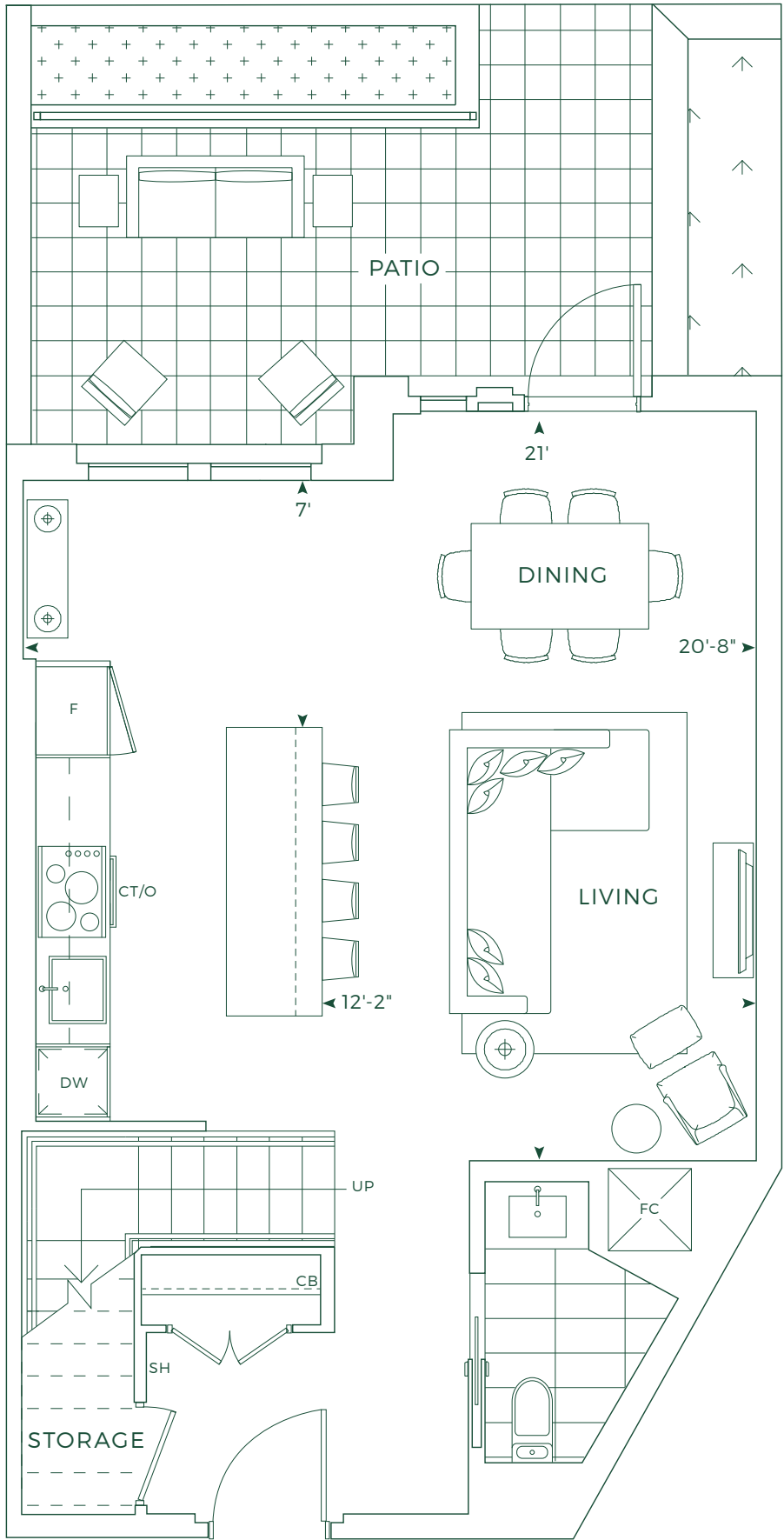
2 BEDROOMS + DEN, 2.5 BATHROOMS



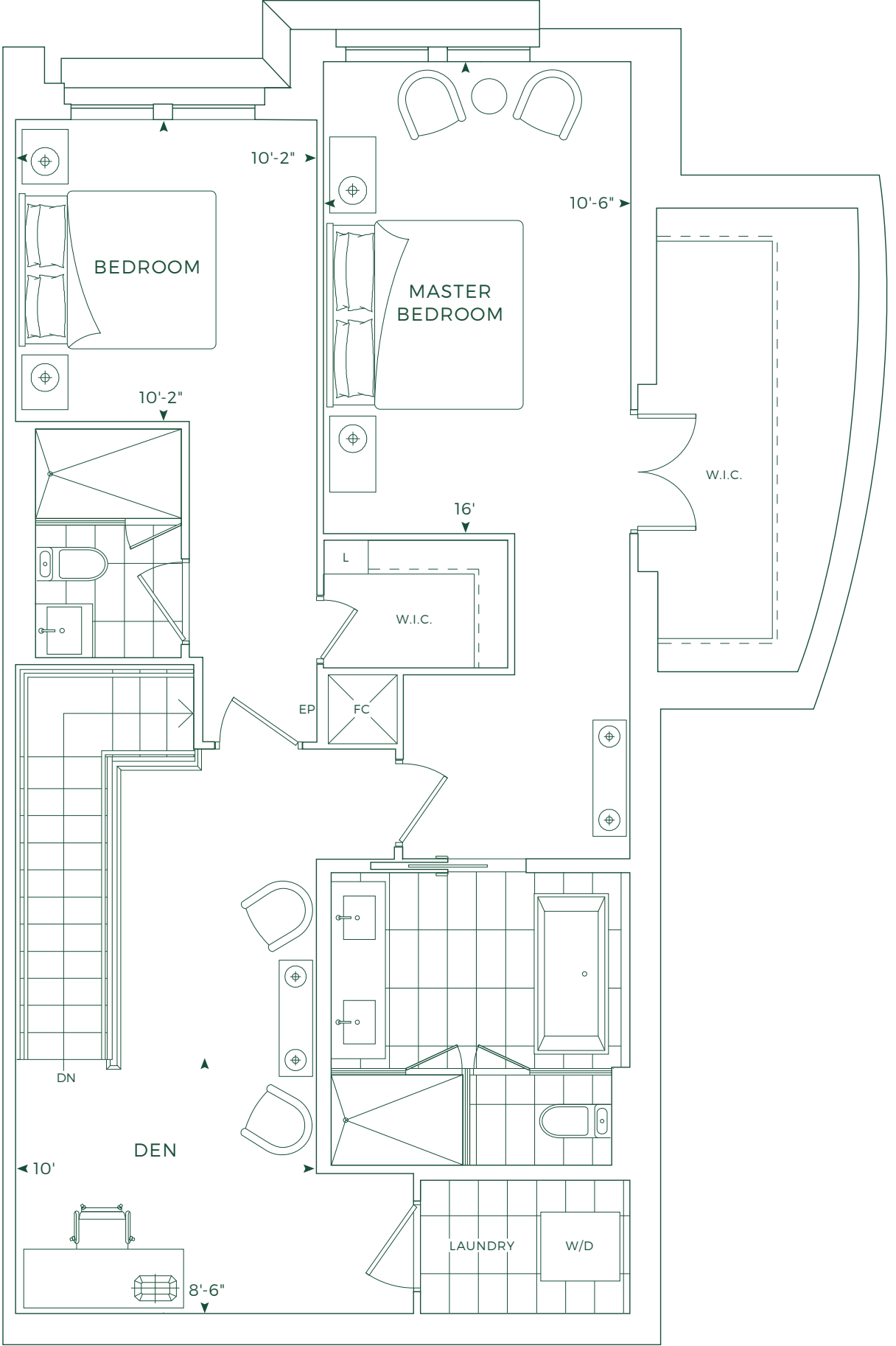
GROUND FLOOR

© Tridel 2019. ® Tridel, "D" design, Tridel Built for Life, Tridel Built for Life Design, and Tridel Built Green Built for Life are registered Trademarks of Tridel Corporation. Project names and logos are Trademarks of their respective owners. All rights reserved. Building and view not to scale. All dimensions are approximate and subject to normal construction variances. Dimensions may exceed the usable floor area. Some features and finishes herein are upgrades or are for illustrative purposes only and may not be available. Furniture is displayed for illustrative purposes only and does not necessarily reflect the electrical plan for the suite. Suites are sold unfurnished. Balcony, terrace and landscape variations may apply, contact a sales representative for further details. Furniture, BBQs and planter locations on balcony/terraces are for illustration purposes only and subject to change. Illustrations are artist's concept only. Sizes and specifications subject to change without notice. E. & O.E. June 2019.

LOWER LEVEL



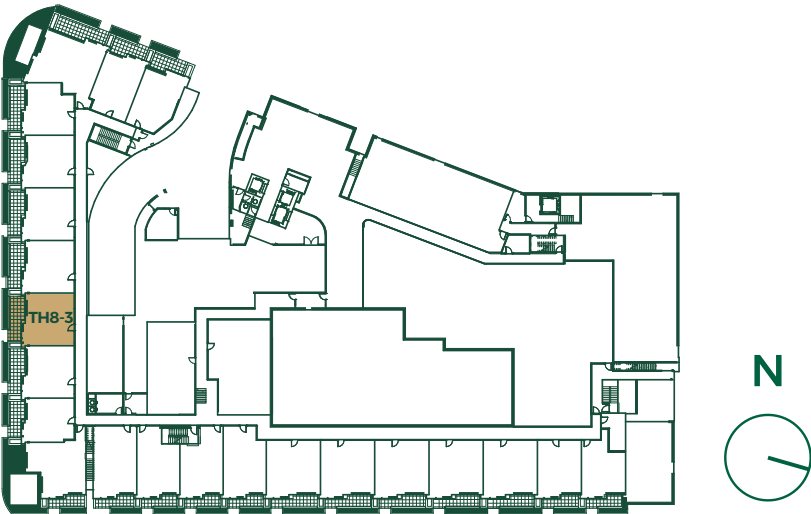
UPPER LEVEL



# TOWNHOME 8-3

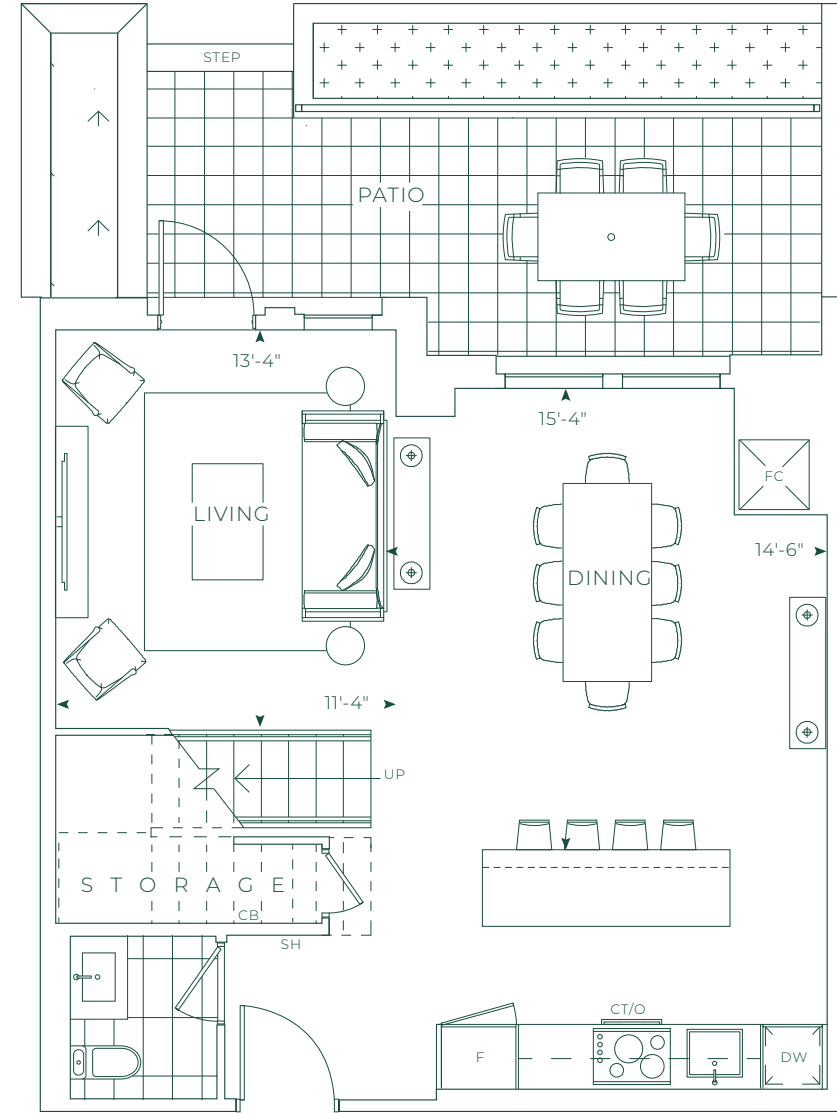
1,620 SQ.FT.

3 BEDROOMS, 2.5 BATHROOMS

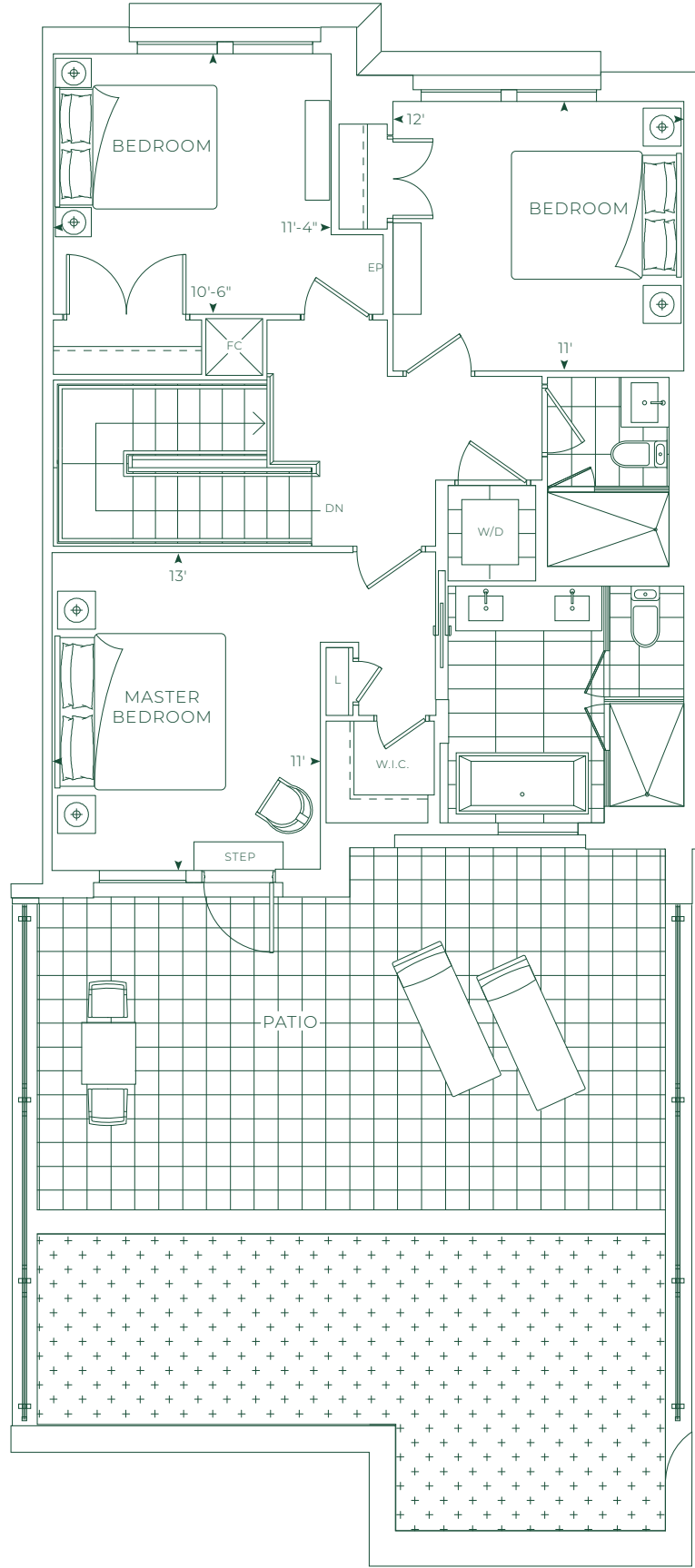


GROUND FLOOR

LOWER LEVEL



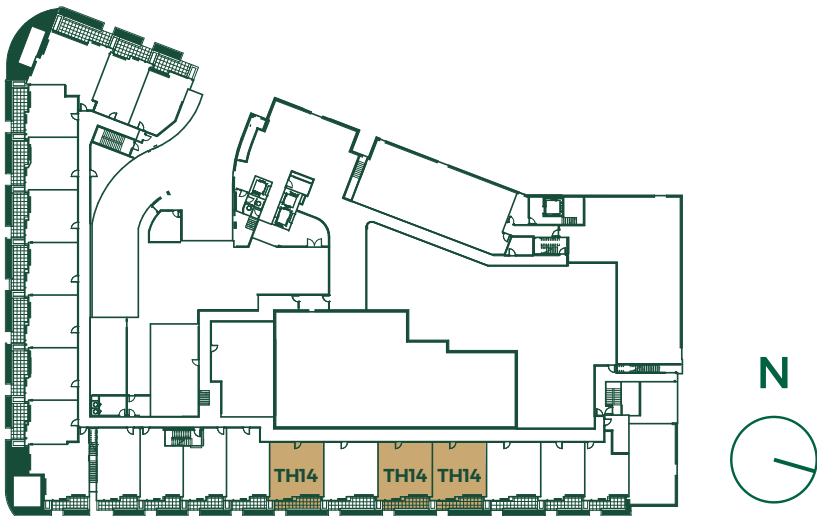
UPPER LEVEL



# Townhome 14

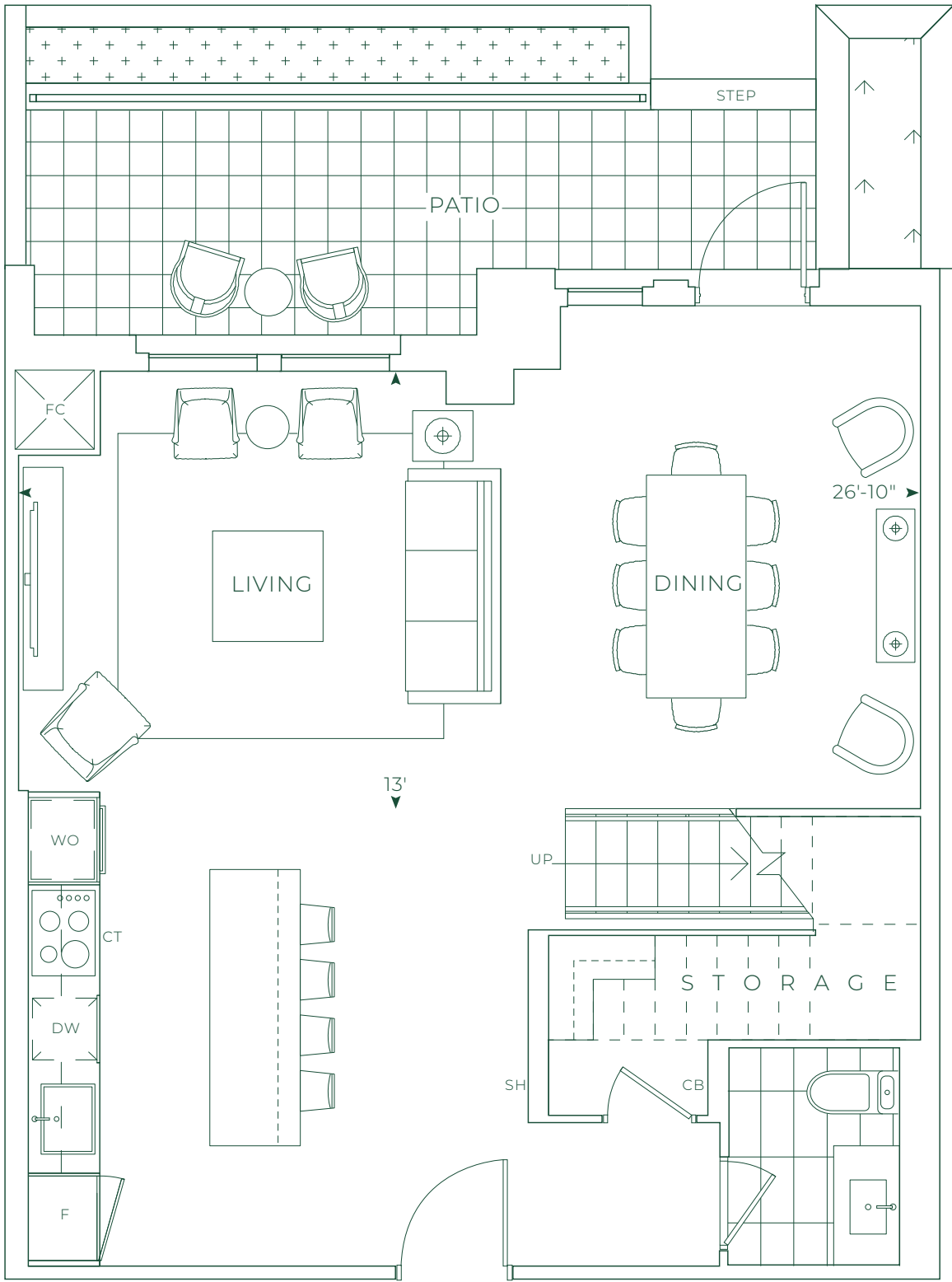
1,820 SQ.FT.

3 BEDROOMS, 2.5 BATHROOMS

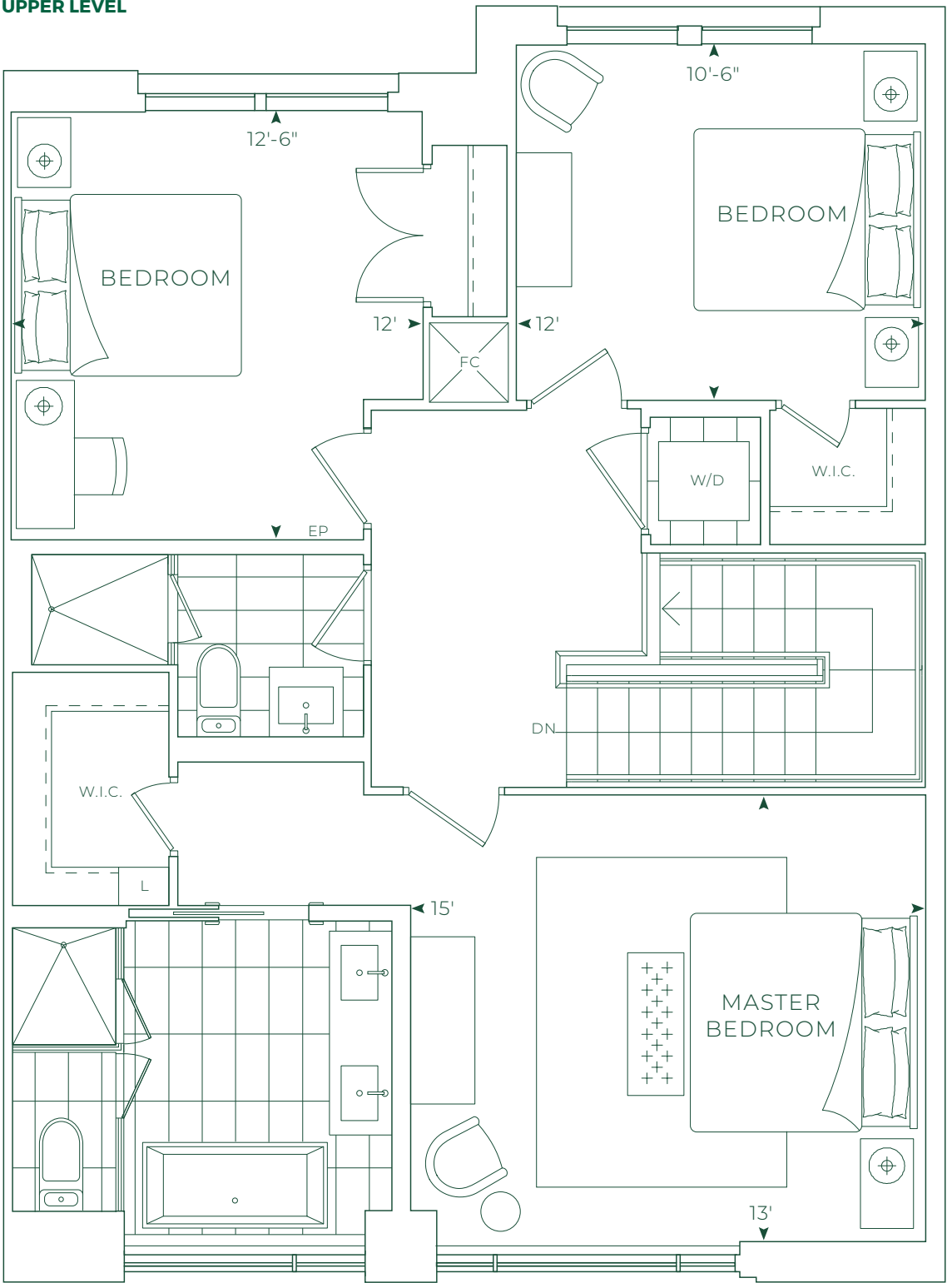


GROUND FLOOR

LOWER LEVEL



UPPER LEVEL



© Tridel 2019. © Tridel, "D" design, Tridel Built for Life, Tridel Built for Life Design, and Tridel Built Green Built for Life are registered Trademarks of Tridel Corporation. Project names and logos are Trademarks of their respective owners. All rights reserved. Building and view not to scale. All dimensions are approximate and subject to normal construction variances. Dimensions may exceed the usable floor area. Some features and finishes herein are upgrades or are for illustrative purposes only and may not be available. Furniture is displayed for illustrative purposes only and does not necessarily reflect the electrical plan for the suite. Suites are sold unfurnished. Balcony, terrace and facade variations may apply, contact a sales representative for further details. Furniture, BBQs and planter locations on balcony/terraces are for illustration purposes only and subject to change. Illustrations are artist's concept only. Sizes and specifications subject to change without notice. E. & O.E. June 2019.





TOWNHOME KITCHEN





TOWNHOME LIVING AREA



## TOWNHOME COLLECTION

### Features & Finishes

Rich materials and thoughtful details evoke a sense of timeless elegance in every space within your Edenbridge townhome. Luxury appliances provide a chic, innovative counterpoint. Your home makes lavish use of natural materials to create a stunning environment. Natural stone, quartz, and wood grace the interiors, an interplay of the sleekly modern with the treasured traditional.

Throughout your home, engineered hardwood flooring adds to the feeling of a luxurious retreat. In the kitchen, double square edge natural stone or engineered quartz countertops and fully integrated Miele® refrigerator and dishwasher ensure convenience and efficiency as well as beauty. And in your bathroom the glass-enclosed shower or soaker tub help instill a feeling of peace and relaxation.

Spacious walk-in closets, chrome faucets in the kitchen and bathrooms, and contemporary style interior doors with coordinated hardware further convey the impression of utmost comfort and elegance.