

EDENBRIDGE™

KINGSWAY

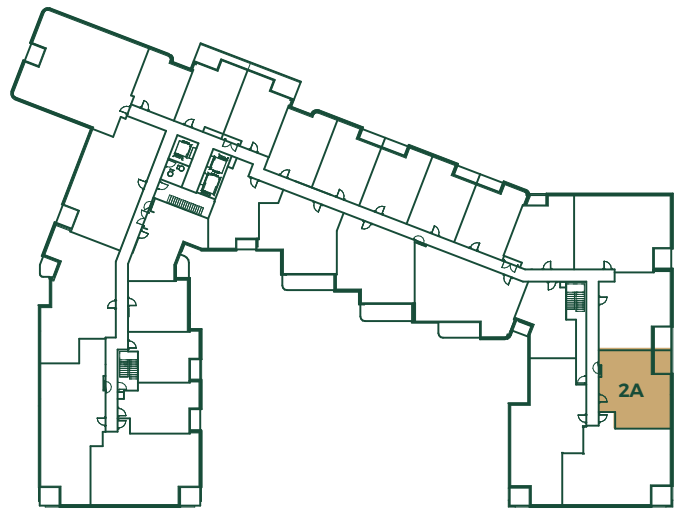
Suites

CONDOMINIUMS

2A

947 SQ.FT.

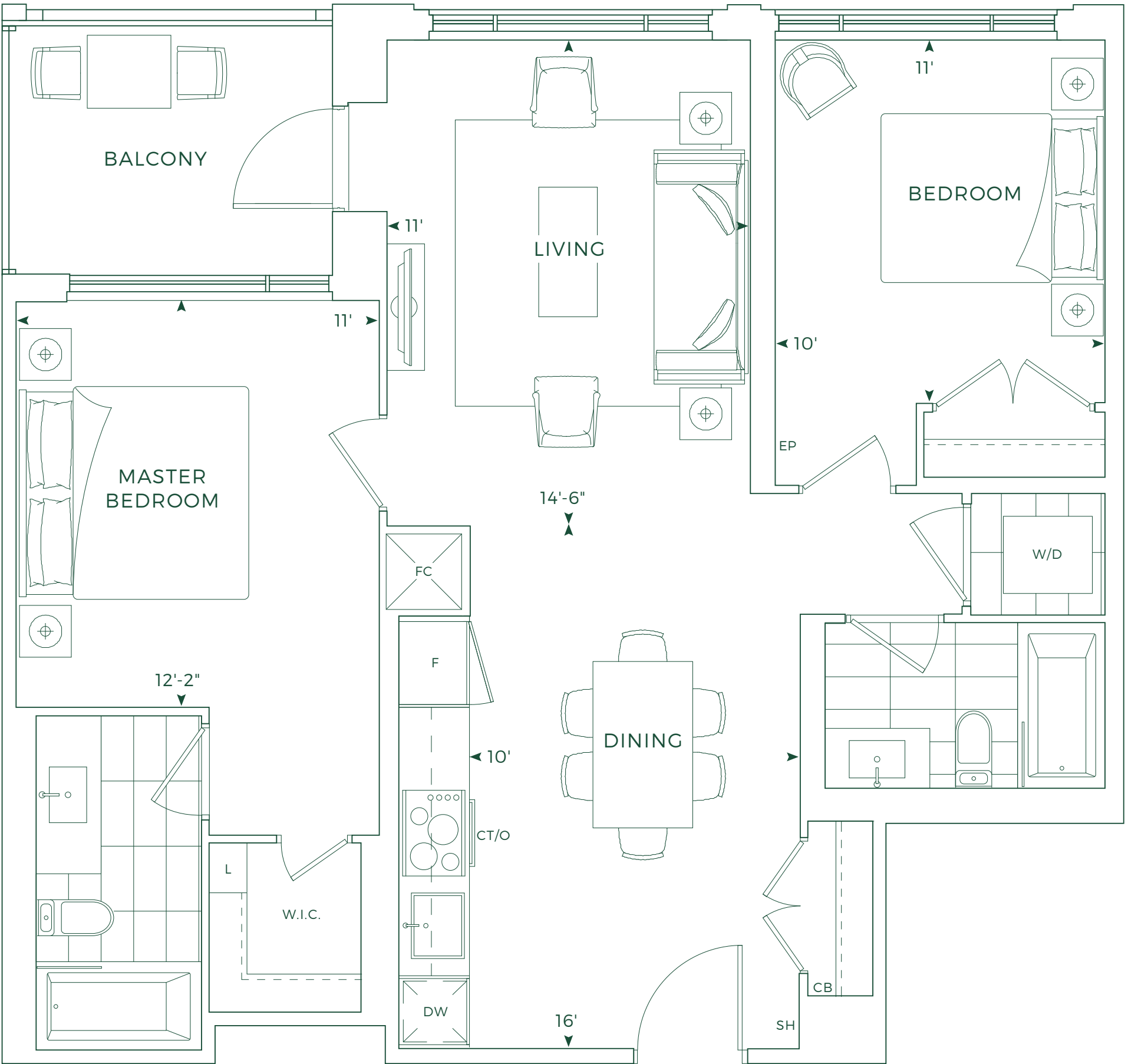
2 BEDROOMS, 2 BATHROOMS



FLOOR 3-5



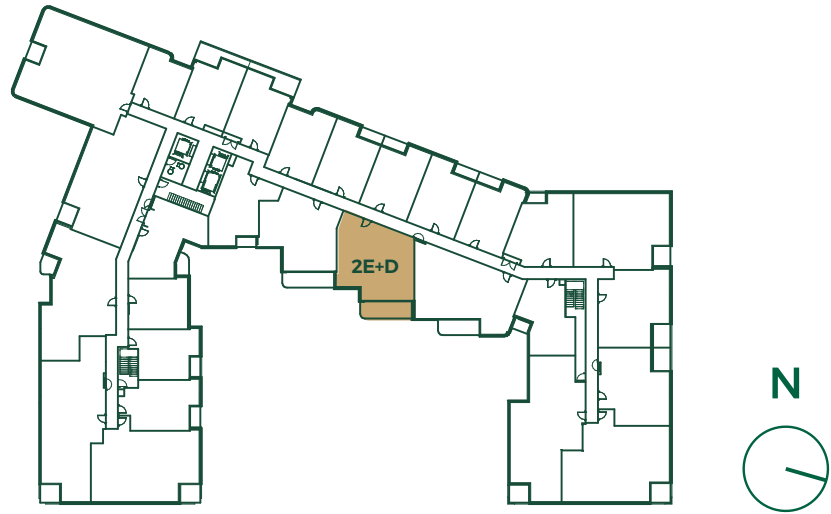
© Tridel 2019. ® Tridel, "D" design, Tridel Built for Life, Tridel Built for Life Design, and Tridel Built Green Built for Life are registered Trademarks of Tridel Corporation. Project names and logos are Trademarks of their respective owners. All rights reserved. Building and view not to scale. All dimensions are approximate and subject to normal construction variances. Dimensions may exceed the usable floor area. Some features and finishes herein are upgrades or are for illustrative purposes only and may not be available. Furniture is displayed for illustrations purposes only and does not necessarily reflect the electrical plan for the suite. Suites are sold unfurnished. Balcony, terrace and facade variations may apply; contact a sales representative for further details. Furniture, BBQs and planter locations on balcony/terraces are for illustration purposes only and subject to change. Illustrations are artist's concept only. Sizes and specifications subject to change without notice. E. & O.E. June 2019.



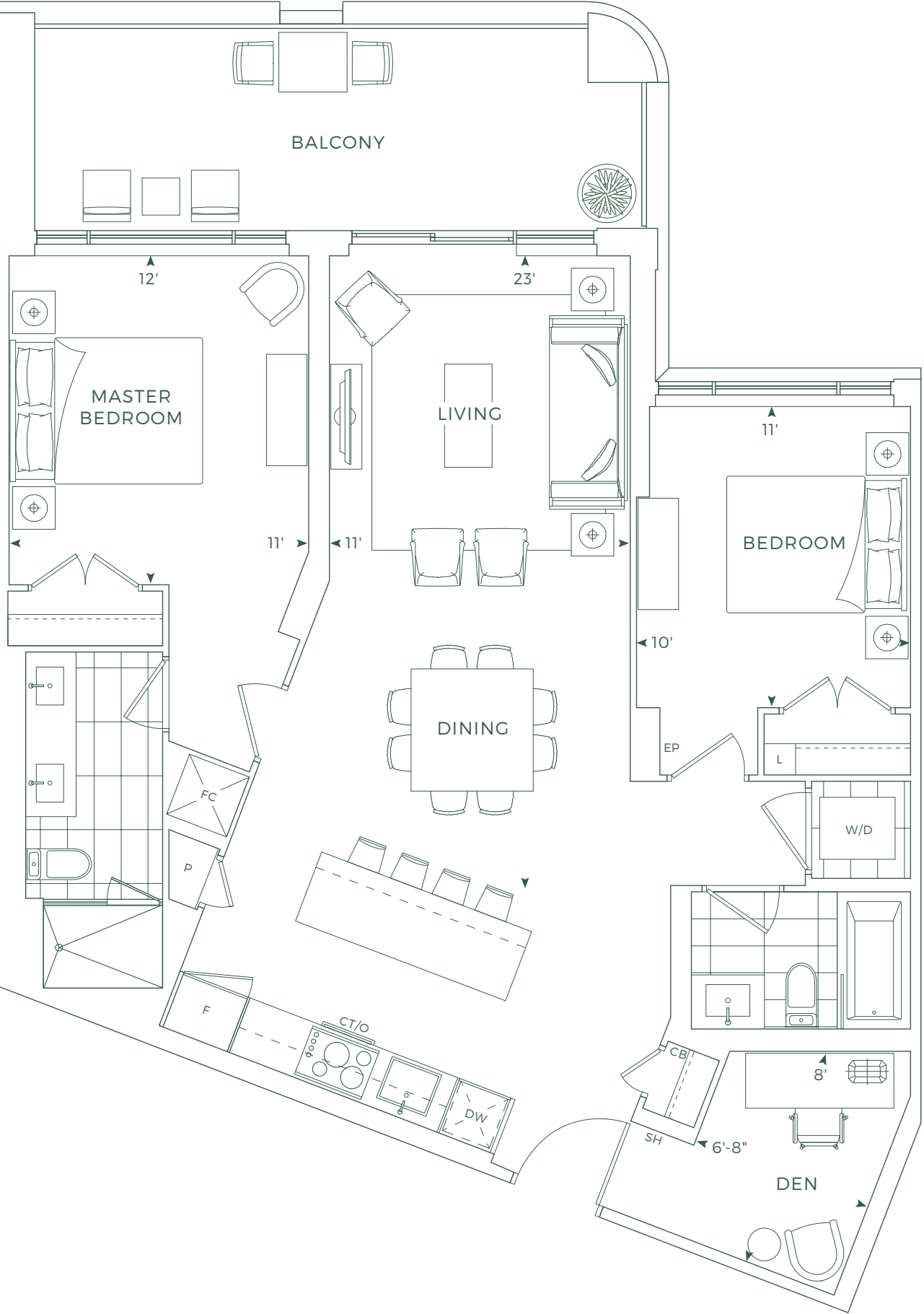
2E+D

1,093 SQ.FT.

2 BEDROOMS + DEN, 2 BATHROOMS



FLOOR 3-7



© Tridel 2019. © Tridel, "D" design, Tridel Built for Life, Tridel Built for Life Design, and Tridel Built Green Built for Life are registered Trademarks of Tridel Corporation. Project names and logos are Trademarks of their respective owners. All rights reserved. Building and view not to scale. All dimensions are approximate and subject to normal construction variances. Dimensions may exceed the usable floor area. Some features and finishes herein are upgrades or are for illustrative purposes only and may not be available. Furniture is displayed for illustrative purposes only and does not necessarily reflect the electrical plan for the suite. Suites are sold unfurnished. Balcony, terrace and lapide variations may apply, contact a sales representative for further details. Furniture, BBQs and planter locations on balcony/terraces are for illustration purposes only and subject to change. Illustrations are artist's concept only. Sizes and specifications subject to change without notice. E. & O.E. June 2019.

2J

1,349 SQ.FT.

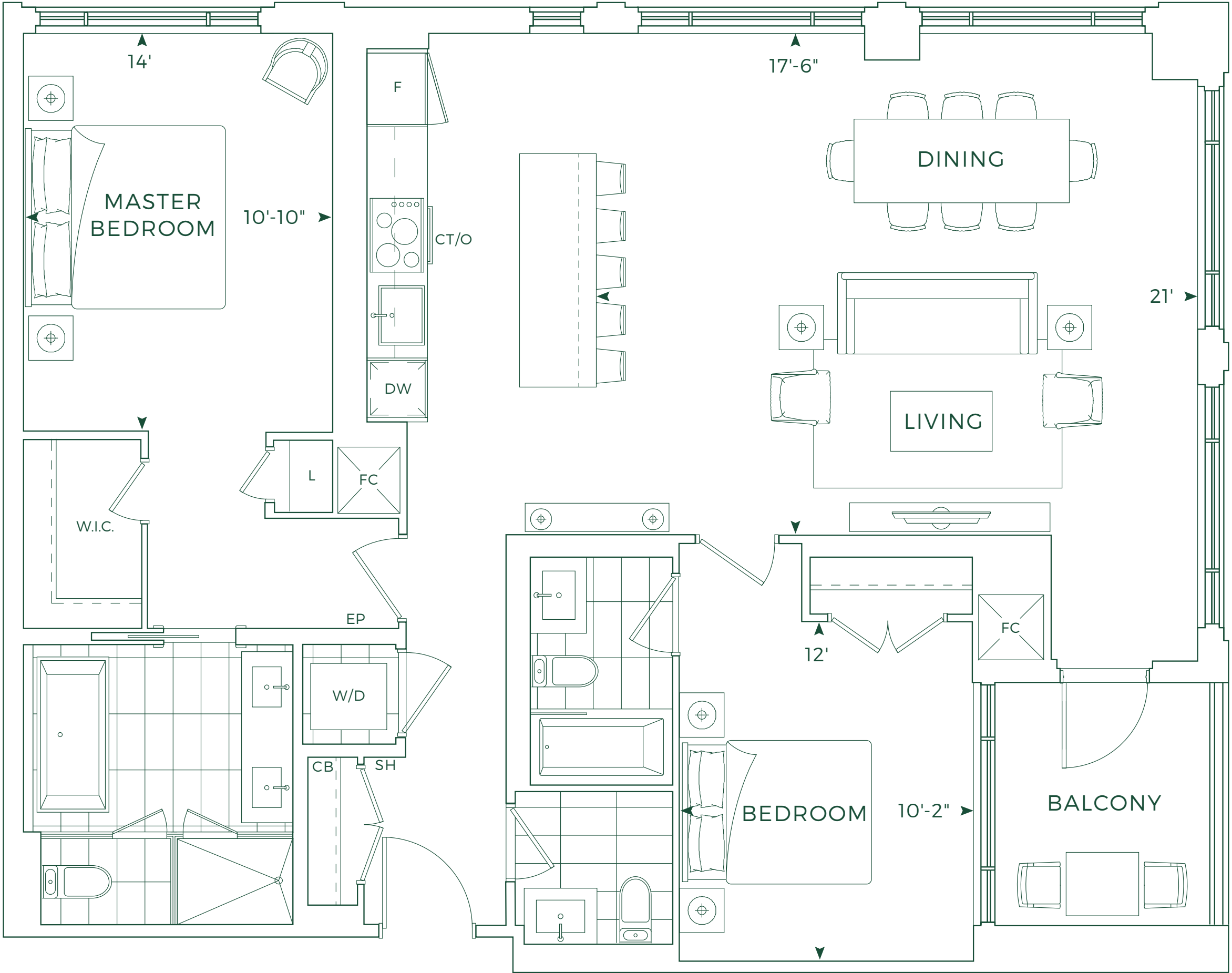
2 BEDROOMS, 2.5 BATHROOMS



FLOOR 3-5



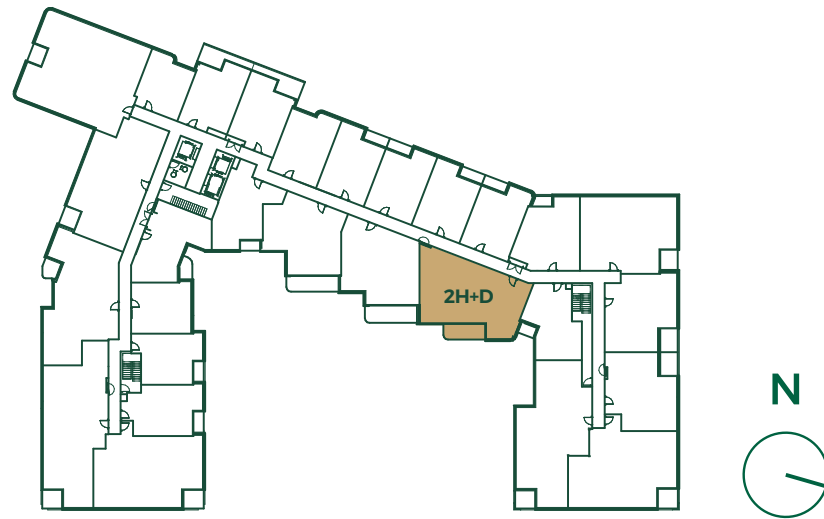
© Tridel 2019. ® Tridel, "D" design, Tridel Built for Life, Tridel Built for Life Design, and Tridel Built Green Built for Life are registered Trademarks of Tridel Corporation. Project names and logos are Trademarks of their respective owners. All rights reserved. Building and view not to scale. All dimensions are approximate and subject to normal construction variances. Dimensions may exceed the usable floor area. Some features and finishes herein are upgrades or are for illustrative purposes only and may not be available. Furniture is displayed for illustrative purposes only and does not necessarily reflect the electrical plan for the suite. Suites are sold unfurnished. Balcony, terrace and lapide variations may apply; contact a sales representative for further details. Furniture, BBQs and planter locations on balcony/terraces are for illustration purposes only and subject to change. Illustrations are artist's concept only. Sizes and specifications subject to change without notice. E. & O.E. June 2019.



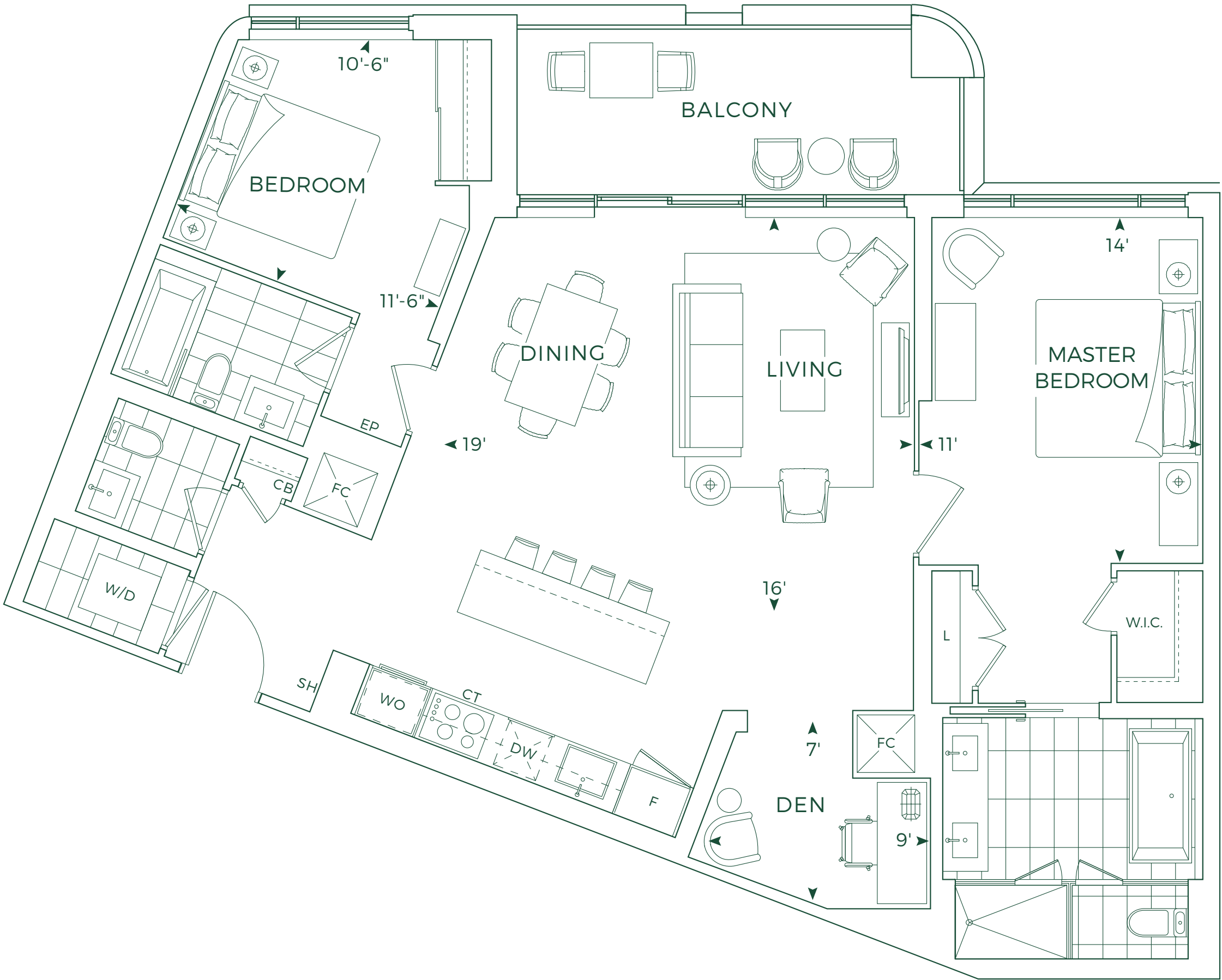
2H+D

1,332 SQ.FT.

2 BEDROOMS + DEN, 2.5 BATHROOMS



FLOOR 3-7

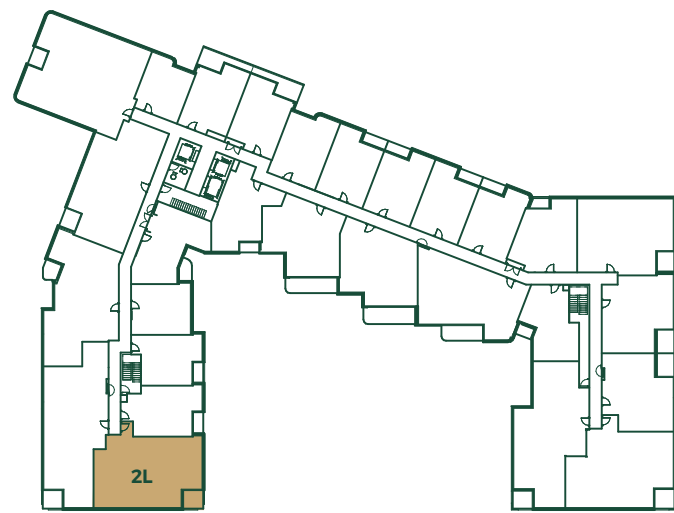


© Tridel 2019. ® Tridel, "D" design, Tridel Built for Life, Tridel Built for Life Design, and Tridel Built Green Built for Life are registered Trademarks of Tridel Corporation. Project names and logos are Trademarks of their respective owners. All rights reserved. Building and view not to scale. All dimensions are approximate and subject to normal construction variances. Dimensions may exceed the usable floor area. Some features and finishes herein are upgrades or are for illustrative purposes only and may not be available. Furniture is displayed for illustrative purposes only and does not necessarily reflect the electrical plan for the suite. Suites are sold unfurnished. Balcony, terrace and facade variations may apply; contact a sales representative for further details. Furniture, BBQs and planter locations on balcony/terraces are for illustration purposes only and subject to change. Illustrations are artist's concept only. Sizes and specifications subject to change without notice. E. & O.E. June 2019.

2L

1,464 SQ.FT.

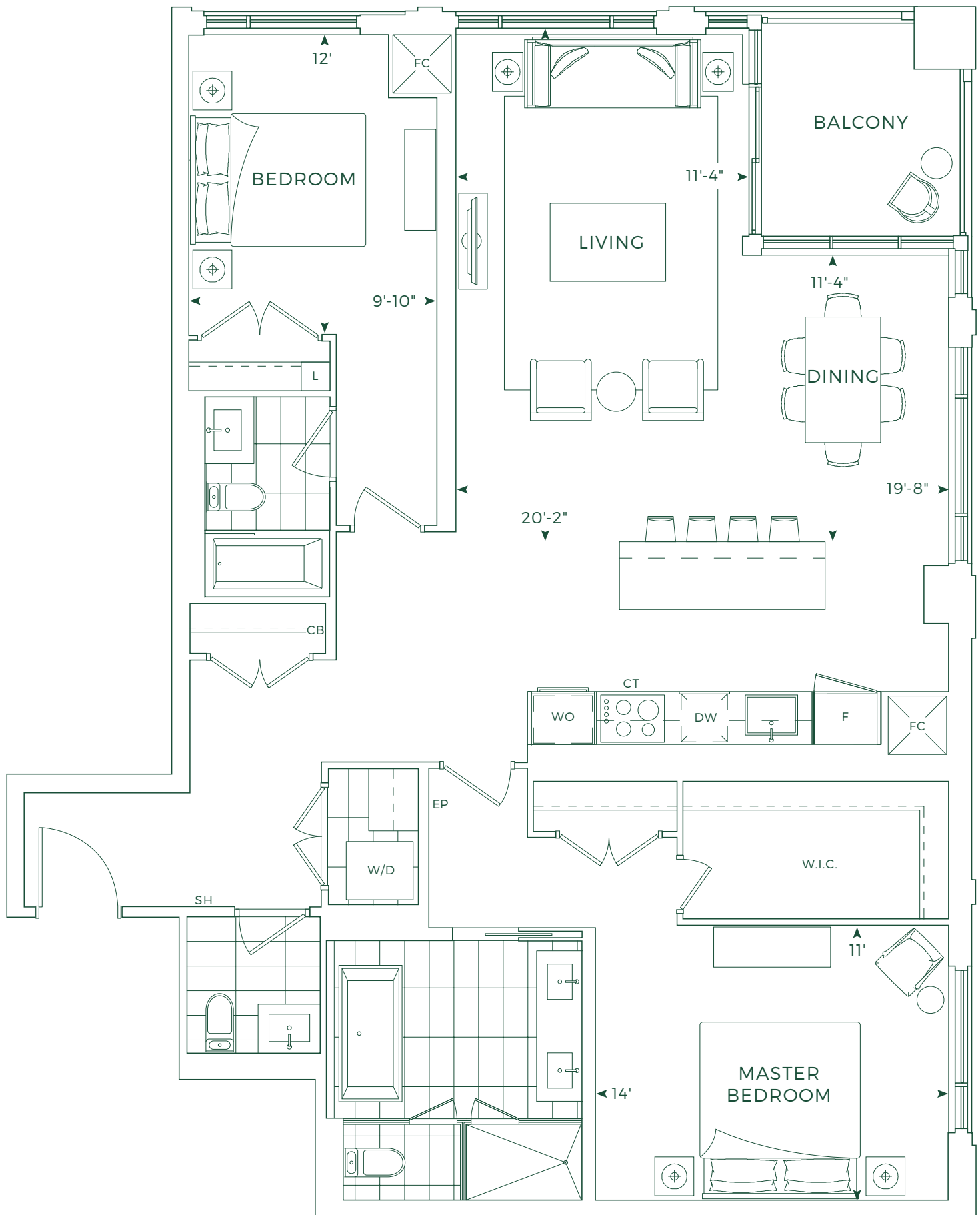
2 BEDROOMS, 2.5 BATHROOMS



FLOOR 3-5



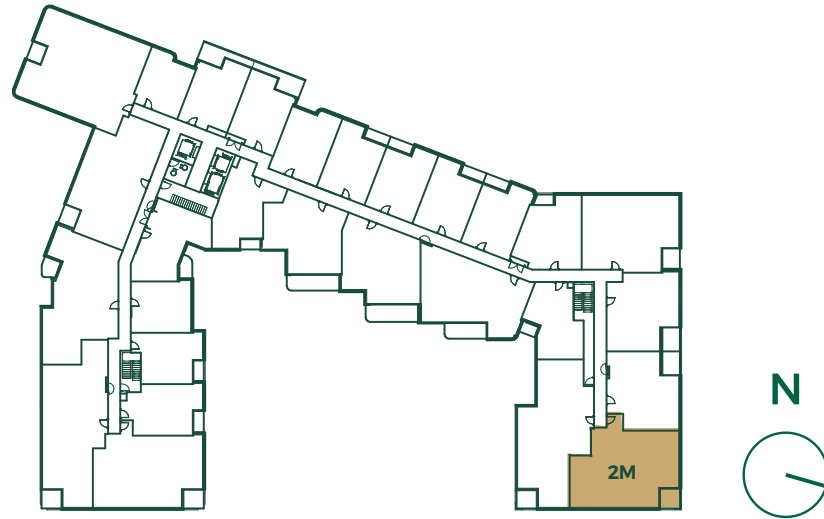
© Tridel 2019. © Tridel, "D" design, Tridel Built for Life, Tridel Built for Life Design, and Tridel Built Green Built for Life are registered Trademarks of Tridel Corporation. Project names and logos are Trademarks of their respective owners. All rights reserved. Building and view not to scale. All dimensions are approximate and subject to normal construction variances. Dimensions may exceed the usable floor area. Some features and finishes herein are upgrades or are for illustrative purposes only and may not be available. Furniture is displayed for illustrative purposes only and does not necessarily reflect the electrical plan for the suite. Suites are sold unfurnished. Balcony, terrace and ledge variations may apply; contact a sales representative for further details. Furniture, BBQs and planter locations on balcony/terraces are for illustration purposes only and subject to change. Illustrations are artist's concept only. Sizes and specifications subject to change without notice. E. & O.E. June 2019.



2M

1,497 SQ.FT.

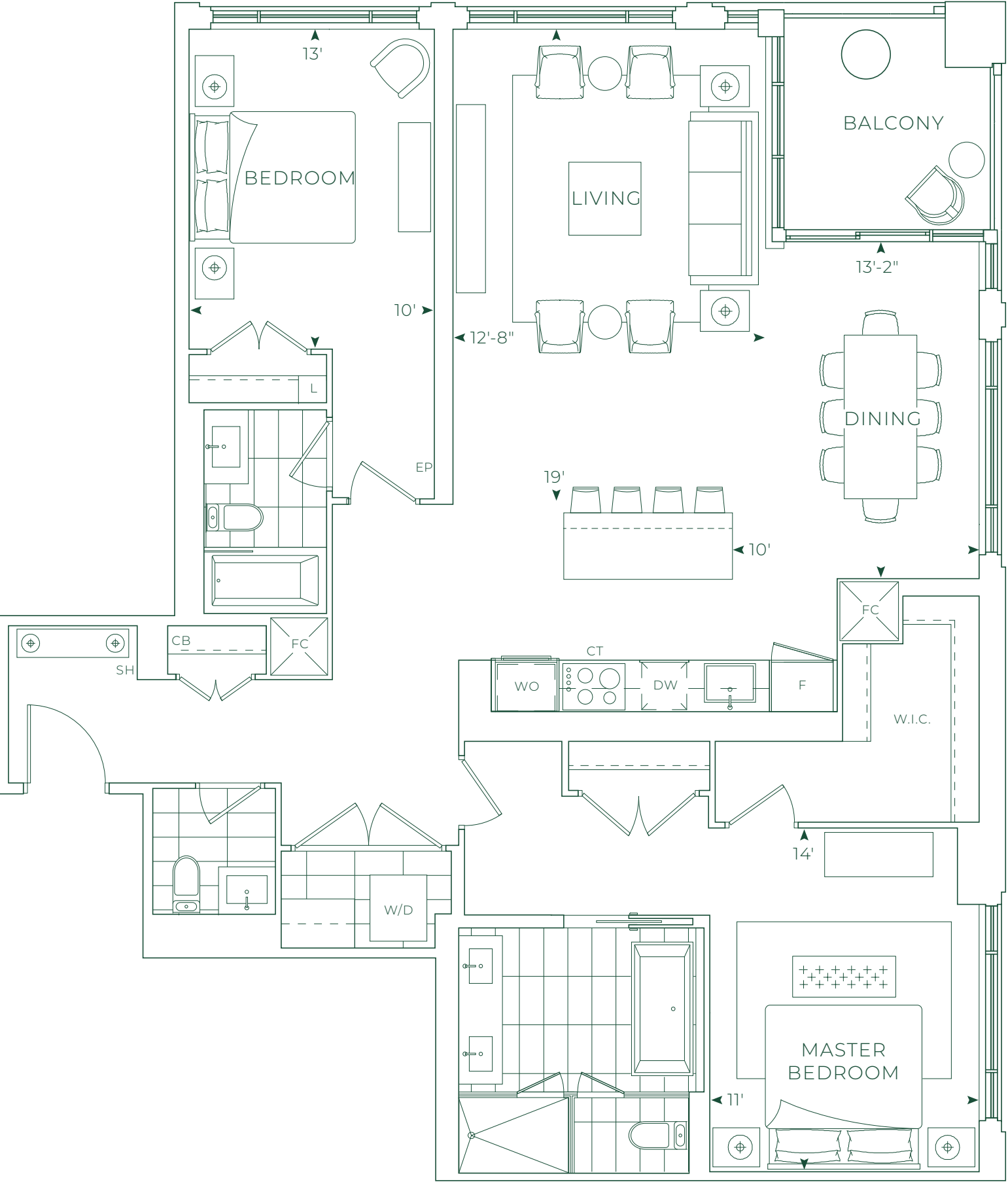
2 BEDROOMS, 2.5 BATHROOMS



FLOOR 3-5



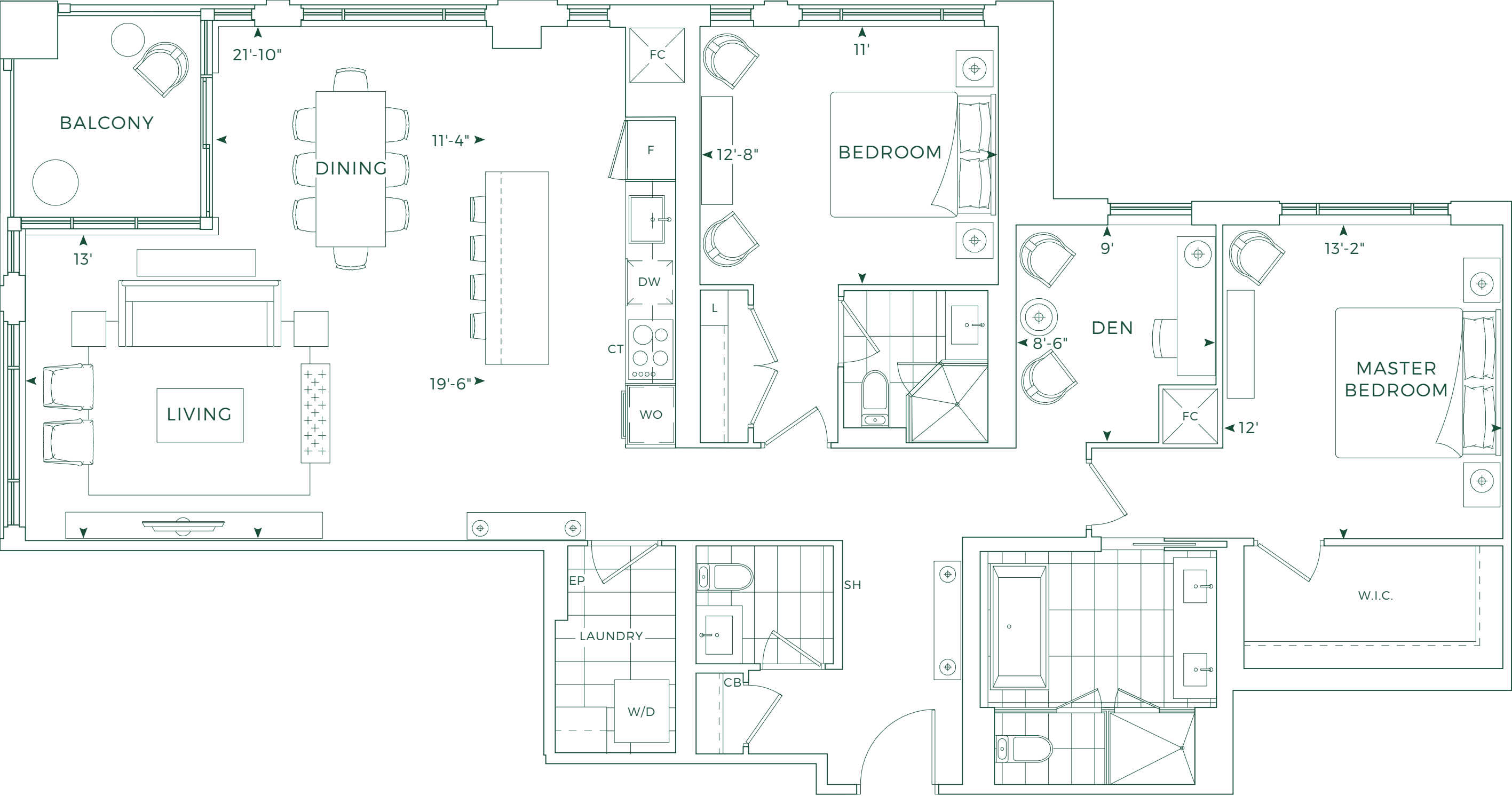
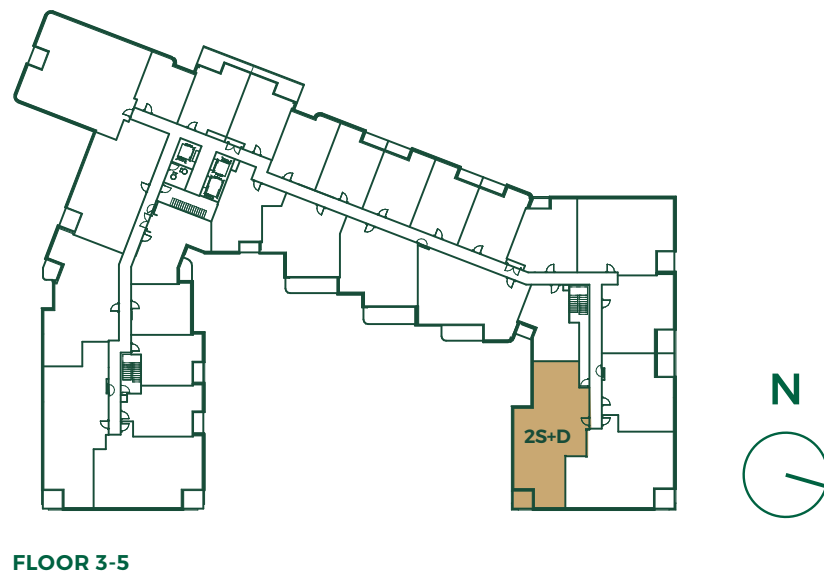
© Tridel 2019. © Tridel, "D" design, Tridel Built for Life, Tridel Built for Life Design, and Tridel Built Green Built for Life are registered Trademarks of Tridel Corporation. Project names and logos are Trademarks of their respective owners. All rights reserved. Building and view not to scale. All dimensions are approximate and subject to normal construction variances. Dimensions may exceed the usable floor area. Some features and finishes herein are upgrades or are for illustrative purposes only and may not be available. Furniture is displayed for illustrative purposes only and does not necessarily reflect the electrical plan for the suite. Suites are sold unfurnished. Balcony, terrace and facade variations may apply; contact a sales representative for further details. Furniture, BBQs and planter locations on balcony/terraces are for illustration purposes only and subject to change. Illustrations are artist's concept only. Sizes and specifications subject to change without notice. E. & O.E. June 2019.



2S+D

1,620 SQ.FT.

2 BEDROOMS + DEN, 2.5 BATHROOMS

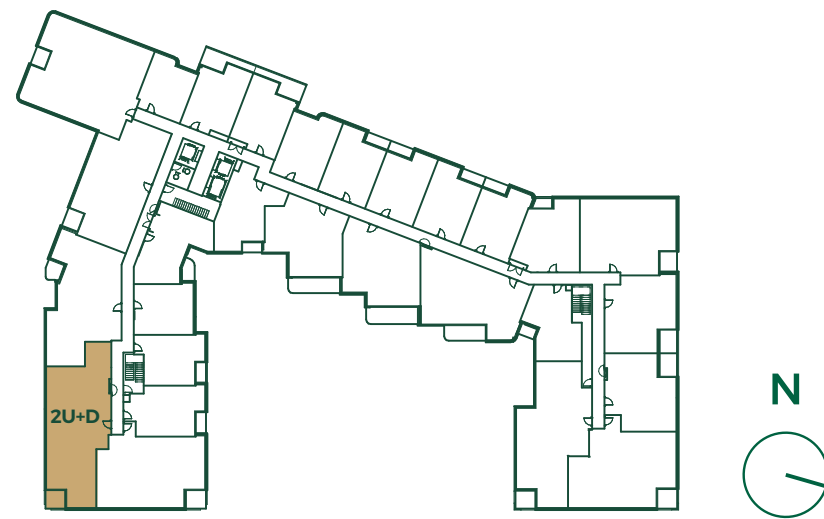


© Tridel 2019. ® Tridel, "D" design, Tridel Built for Life, Tridel Built for Life Design, and Tridel Built Green Built for Life are registered Trademarks of Tridel Corporation. Project names and logos are Trademarks of their respective owners. All rights reserved. Building and view not to scale. All dimensions are approximate and subject to normal construction variances. Dimensions may exceed the usable floor area. Some features and finishes herein are upgrades or are for illustrative purposes only and may not be available. Furniture is displayed for illustrative purposes only and does not necessarily reflect the electrical plan for the suite. Suites are sold unfurnished. Balcony, terrace and facade variations may apply; contact a sales representative for further details. Furniture, BBQs and planter locations on balcony/terraces are for illustration purposes only and subject to change. Illustrations are artist's concept only. Sizes and specifications subject to change without notice. E. & O.E. June 2019.

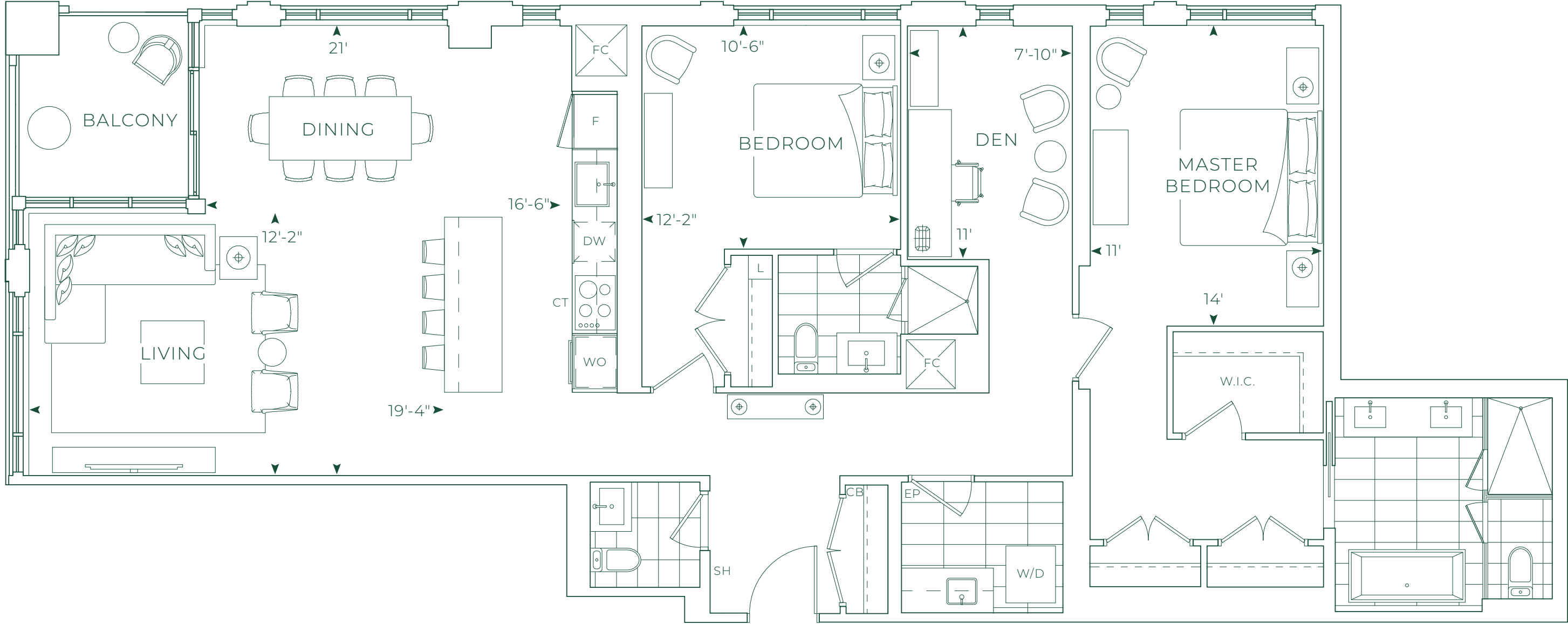
2U+D

1,662 SQ.FT.

2 BEDROOMS + DEN, 2.5 BATHROOMS



FLOOR 3-5

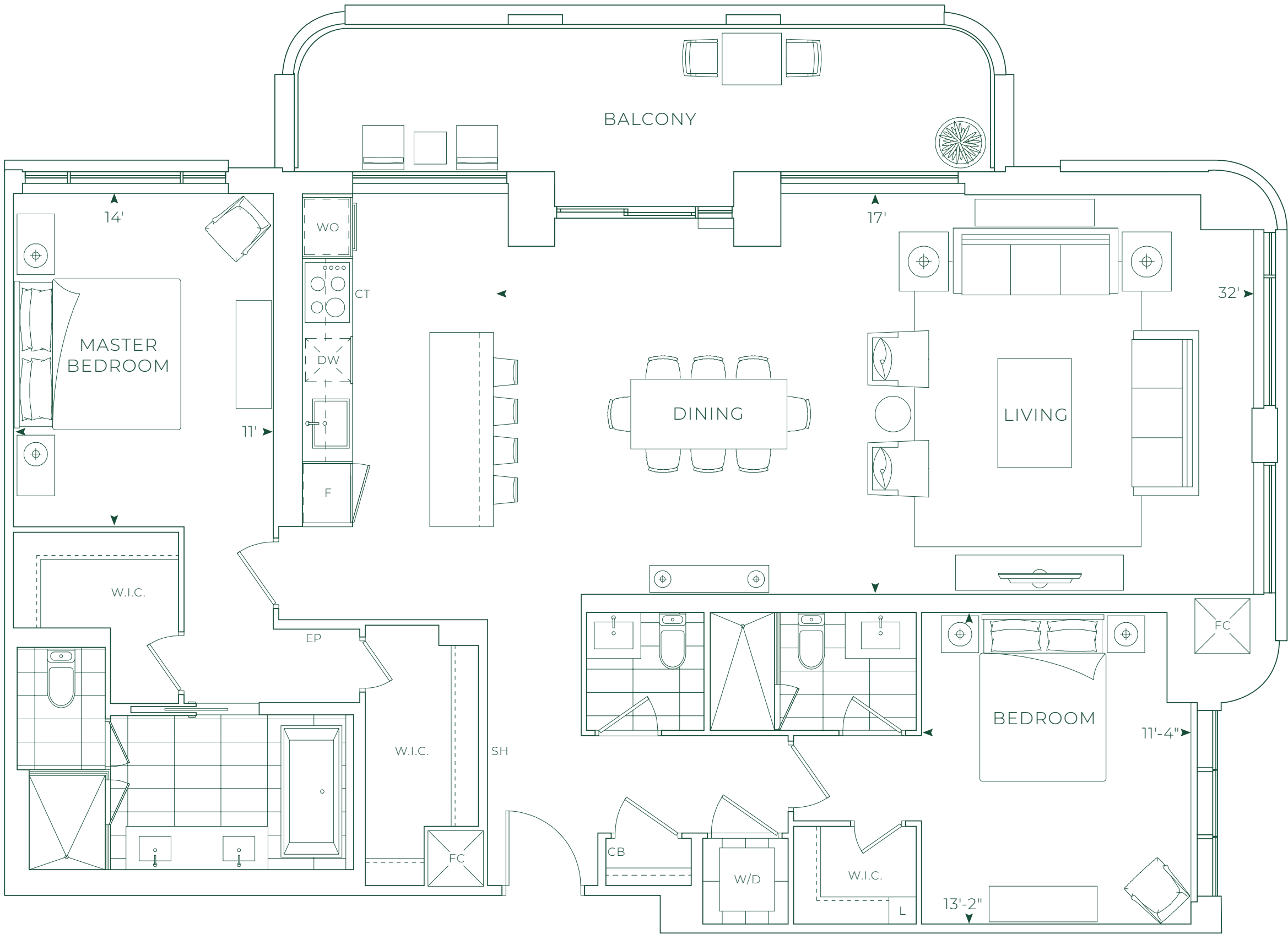
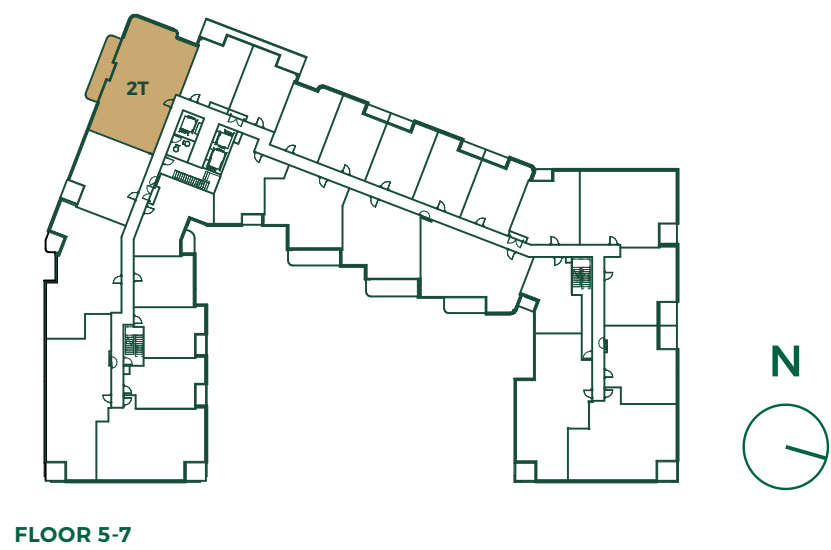


© Tridel 2019. ® Tridel, "D" design, Tridel Built for Life, Tridel Built for Life Design, and Tridel Built Green Built for Life are registered Trademarks of Tridel Corporation. Project names and logos are Trademarks of their respective owners. All rights reserved. Building and view not to scale. All dimensions are approximate and subject to normal construction variances. Dimensions may exceed the usable floor area. Some features and finishes herein are upgrades or are for illustrative purposes only and may not be available. Furniture is displayed for illustrative purposes only and does not necessarily reflect the electrical plan for the suite. Suites are sold unfurnished. Balcony, terrace and facade variations may apply; contact a sales representative for further details. Furniture, BBQs and planter locations on balcony/terraces are for illustration purposes only and subject to change. Illustrations are artist's concept only. Sizes and specifications subject to change without notice. E. & O.E. June 2019.

2T

1,658 SQ.FT.

2 BEDROOMS, 2.5 BATHROOMS

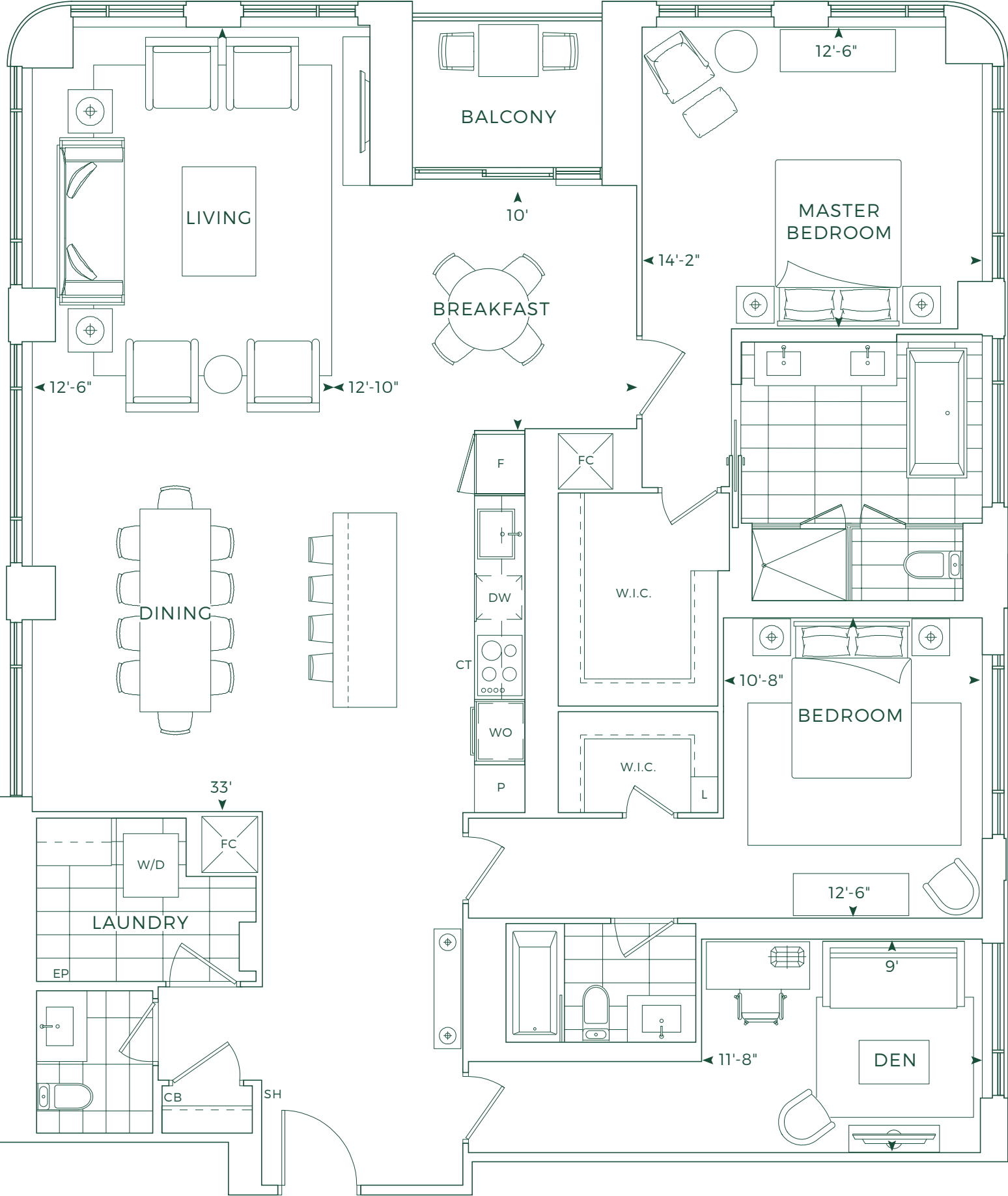
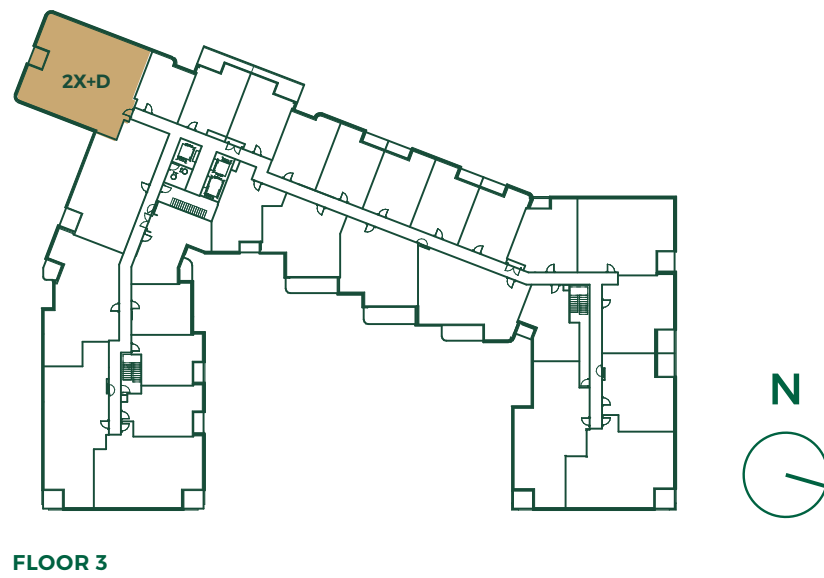


© Tridel 2019. © Tridel, "D" design, Tridel Built for Life, Tridel Built for Life Design, and Tridel Built Green Built for Life are registered Trademarks of Tridel Corporation. Project names and logos are Trademarks of their respective owners. All rights reserved. Building and view not to scale. All dimensions are approximate and subject to normal construction variances. Dimensions may exceed the usable floor area. Some features and finishes herein are upgrades or are for illustrative purposes only and may not be available. Furniture is displayed for illustrative purposes only and does not necessarily reflect the electrical plan for the suite. Suites are sold unfurnished. Balcony, terrace and lapide variations may apply; contact a sales representative for further details. Furniture, BBQs and planter locations on balcony/terraces are for illustration purposes only and subject to change. Illustrations are artist's concept only. Sizes and specifications subject to change without notice. E. & O.E. June 2019.

2X+D

2,014 SQ.FT.

2 BEDROOMS + DEN, 2.5 BATHROOMS



© Tridel 2019. © Tridel, "D" design, Tridel Built for Life, Tridel Built for Life Design, and Tridel Built Green Built for Life are registered Trademarks of Tridel Corporation. Project names and logos are Trademarks of their respective owners. All rights reserved. Building and view not to scale. All dimensions are approximate and subject to normal construction variances. Dimensions may exceed the usable floor area. Some features and finishes herein are upgrades or are for illustrative purposes only and may not be available. Furniture is displayed for illustrative purposes only and does not necessarily reflect the electrical plan for the suite. Suites are sold unfurnished. Balcony, terrace and facade variations may apply, contact a sales representative for further details. Furniture, BBQs and planter locations on balcony/terraces are for illustration purposes only and subject to change. Illustrations are artist's concept only. Sizes and specifications subject to change without notice. E. & O.E. June 2019.

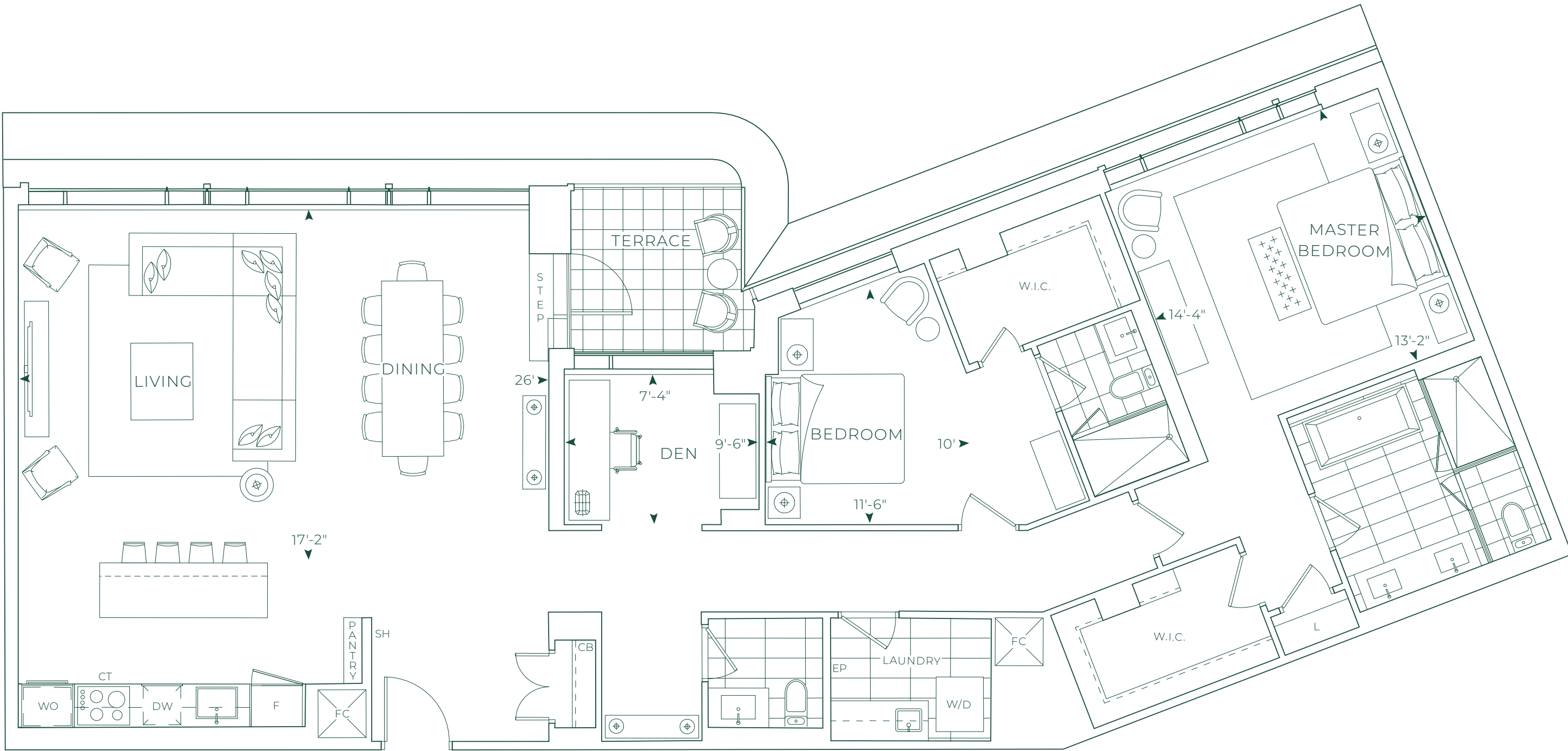
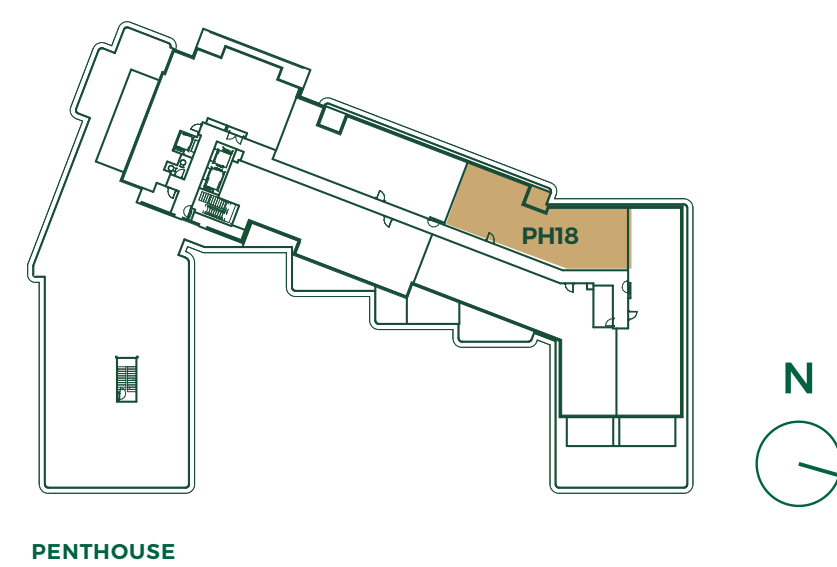
EDENBRIDGE™
KINGSWAY

Penthouse Suites

PENTHOUSE 18

1,868 SQ.FT.

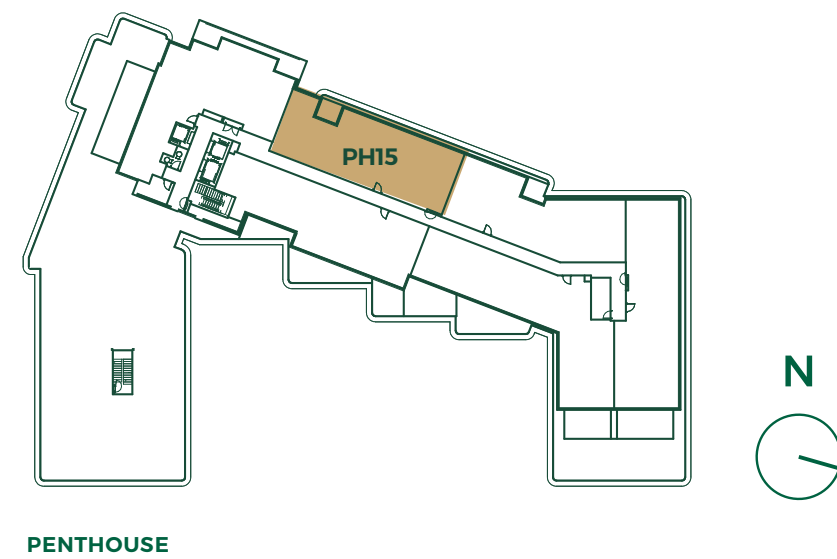
2 BEDROOMS + DEN, 2.5 BATHROOMS



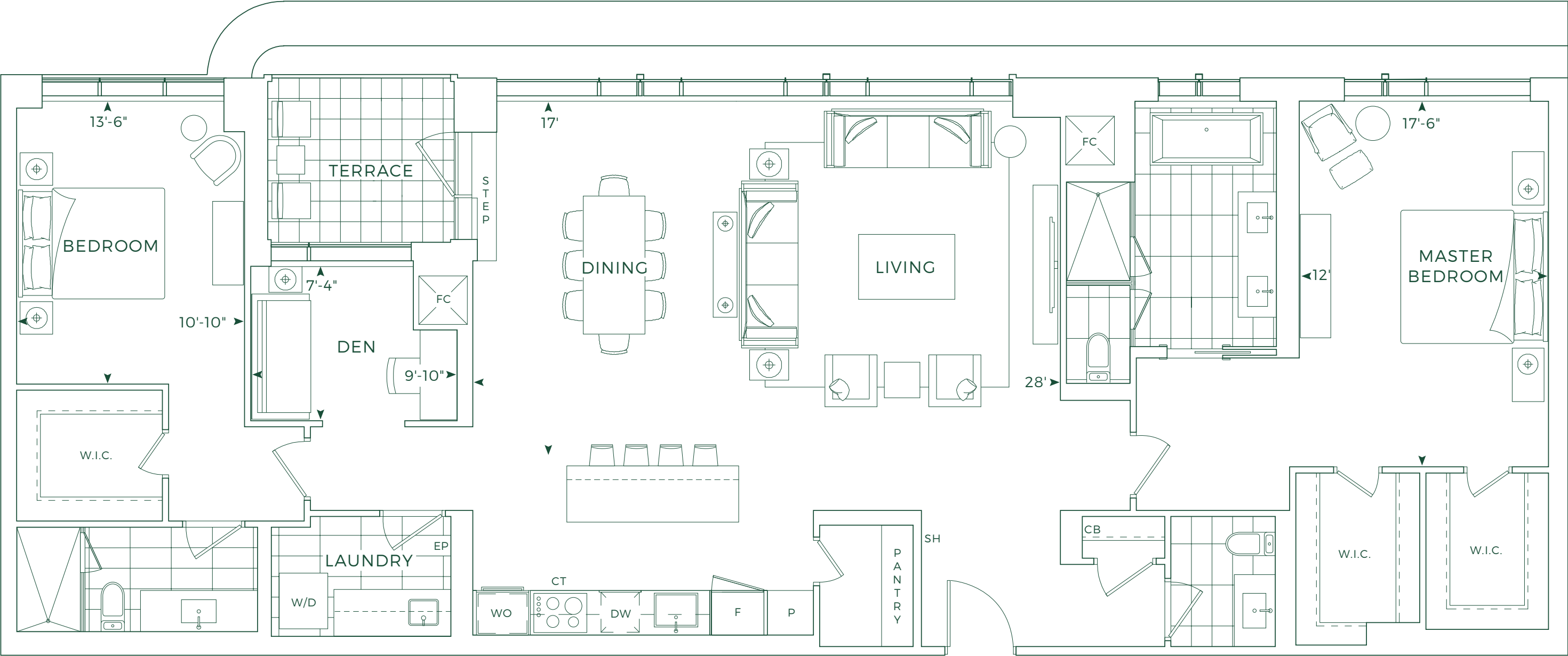
PENTHOUSE 15

1,977 SQ.FT.

2 BEDROOMS + DEN, 2.5 BATHROOMS



PENTHOUSE

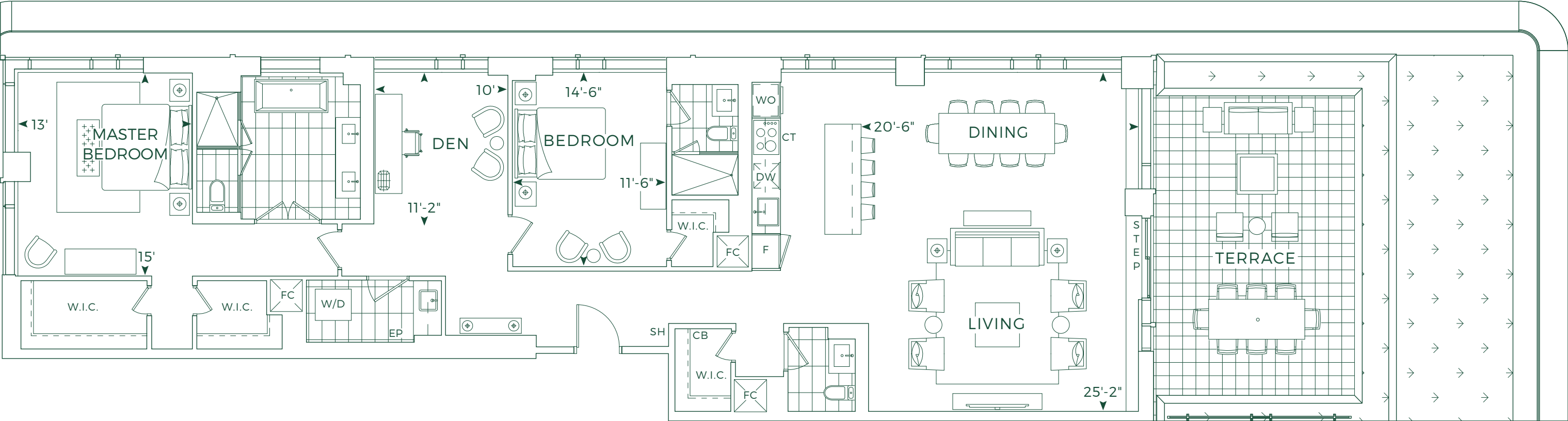
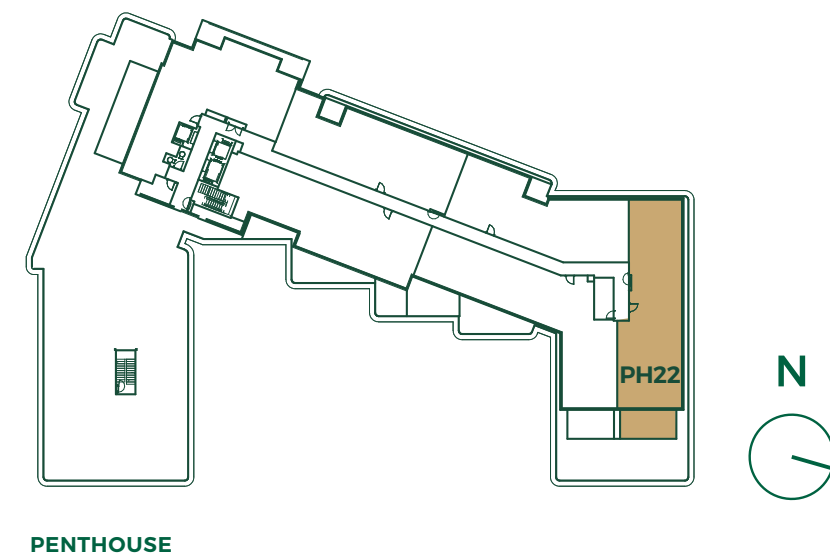


© Tridel 2019. © Tridel, "D" design, Tridel Built for Life, Tridel Built for Life Design, and Tridel Built Green Built for Life are registered trademarks of Tridel Corporation. Project names and logos are trademarks of their respective owners. All rights reserved. Building and view not to scale. All dimensions are approximate and subject to normal construction variances. Dimensions may exceed the usable floor area. Some features and finishes herein are upgrades or are for illustrative purposes only and may not be available. Furniture is displayed for illustrative purposes only and does not necessarily reflect the electrical plan for the suite. Suites are sold unfurnished. Balcony, terrace and facade variations may apply; contact a sales representative for further details. Furniture, BBQs and planter locations on balcony/terraces are for illustration purposes only and subject to change. Illustrations are artist's concept only. Sizes and specifications subject to change without notice. E. & O.E. June 2019.

PENTHOUSE 22

2,048 SQ.FT.

2 BEDROOMS + DEN, 2.5 BATHROOMS

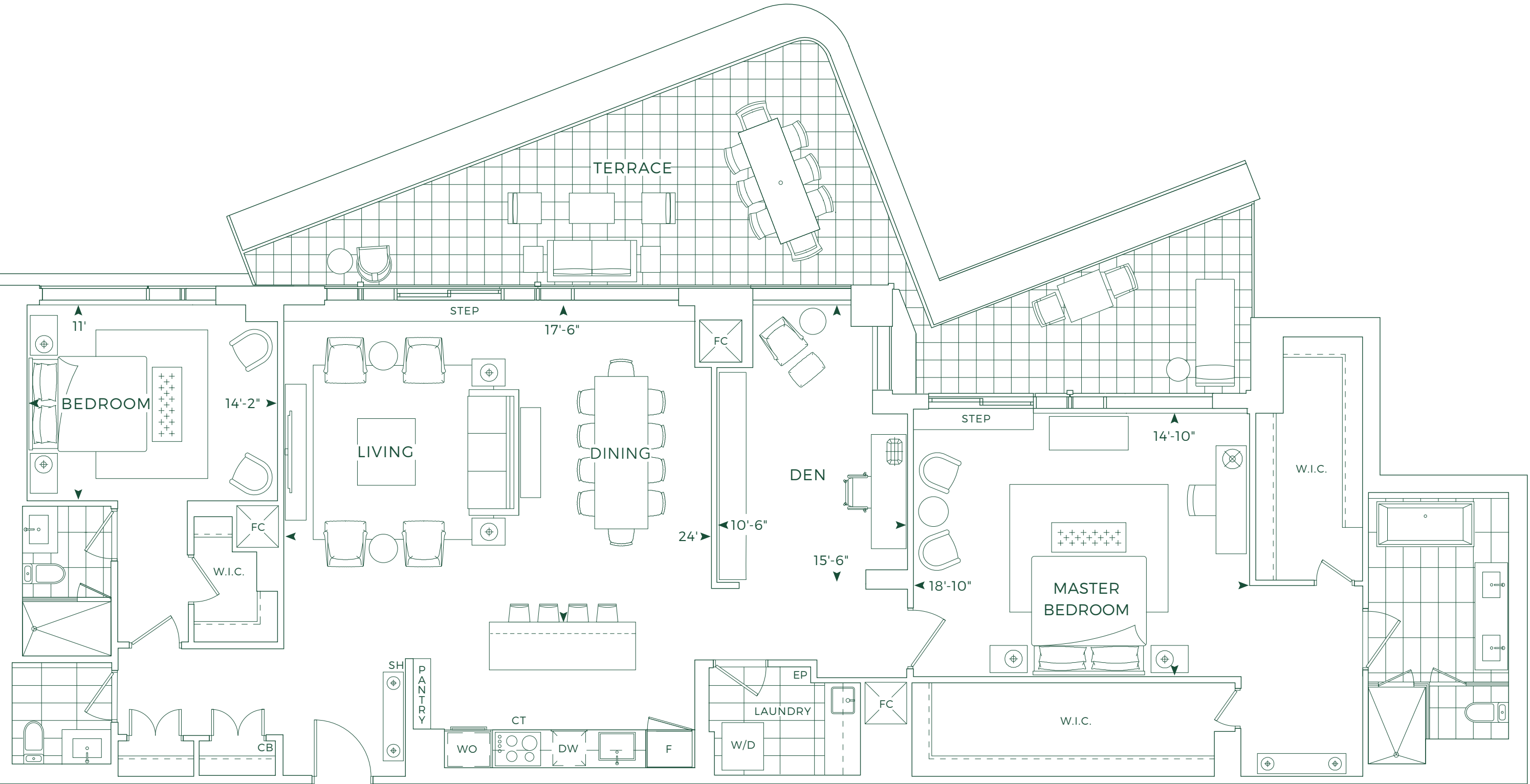
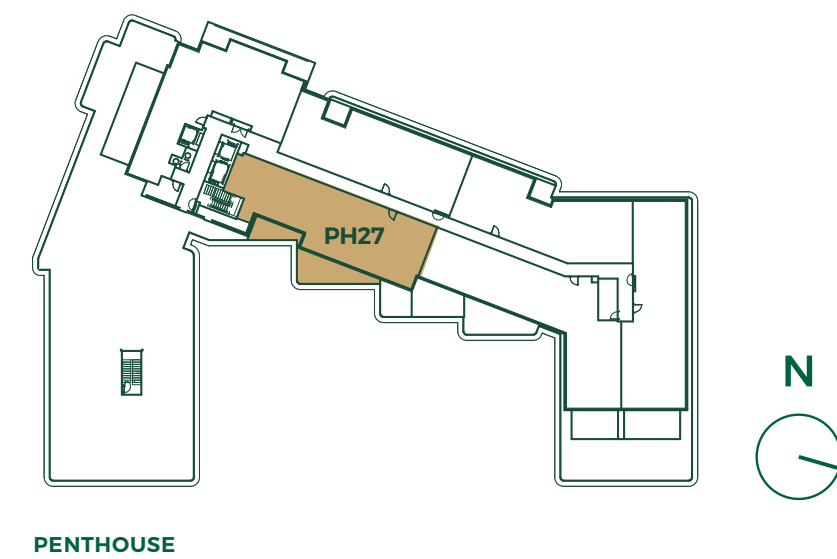


© Tridel 2019. ® Tridel, "D" design, Tridel Built for Life, Tridel Built for Life Design, and Tridel Built Green Built for Life are registered Trademarks of Tridel Corporation. Project names and logos are Trademarks of their respective owners. All rights reserved. Building and view not to scale. All dimensions are approximate and subject to normal construction variances. Dimensions may exceed the usable floor area. Some features and finishes herein are upgrades or are for illustrative purposes only and may not be available. Furniture is displayed for illustrations purposes only and does not necessarily reflect the electrical plan for the suite. Suites are sold unfurnished. Balcony, terrace and facade variations may apply, contact a sales representative for further details. Furniture, BBQs and planter locations on balcony/terraces are for illustration purposes only and subject to change. Illustrations are artist's concept only. Sizes and specifications subject to change without notice. E. & O.E. June 2019.

PENTHOUSE 27

2,173 SQ.FT.

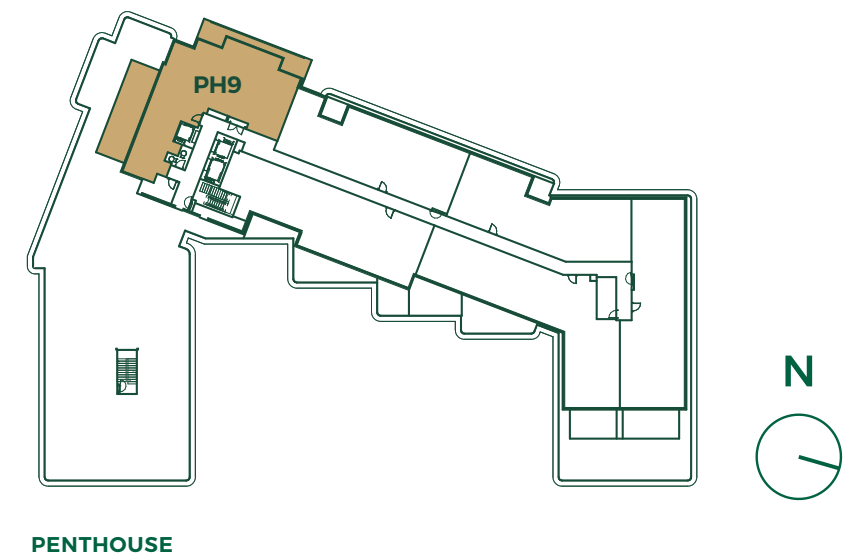
2 BEDROOMS + DEN, 2.5 BATHROOMS



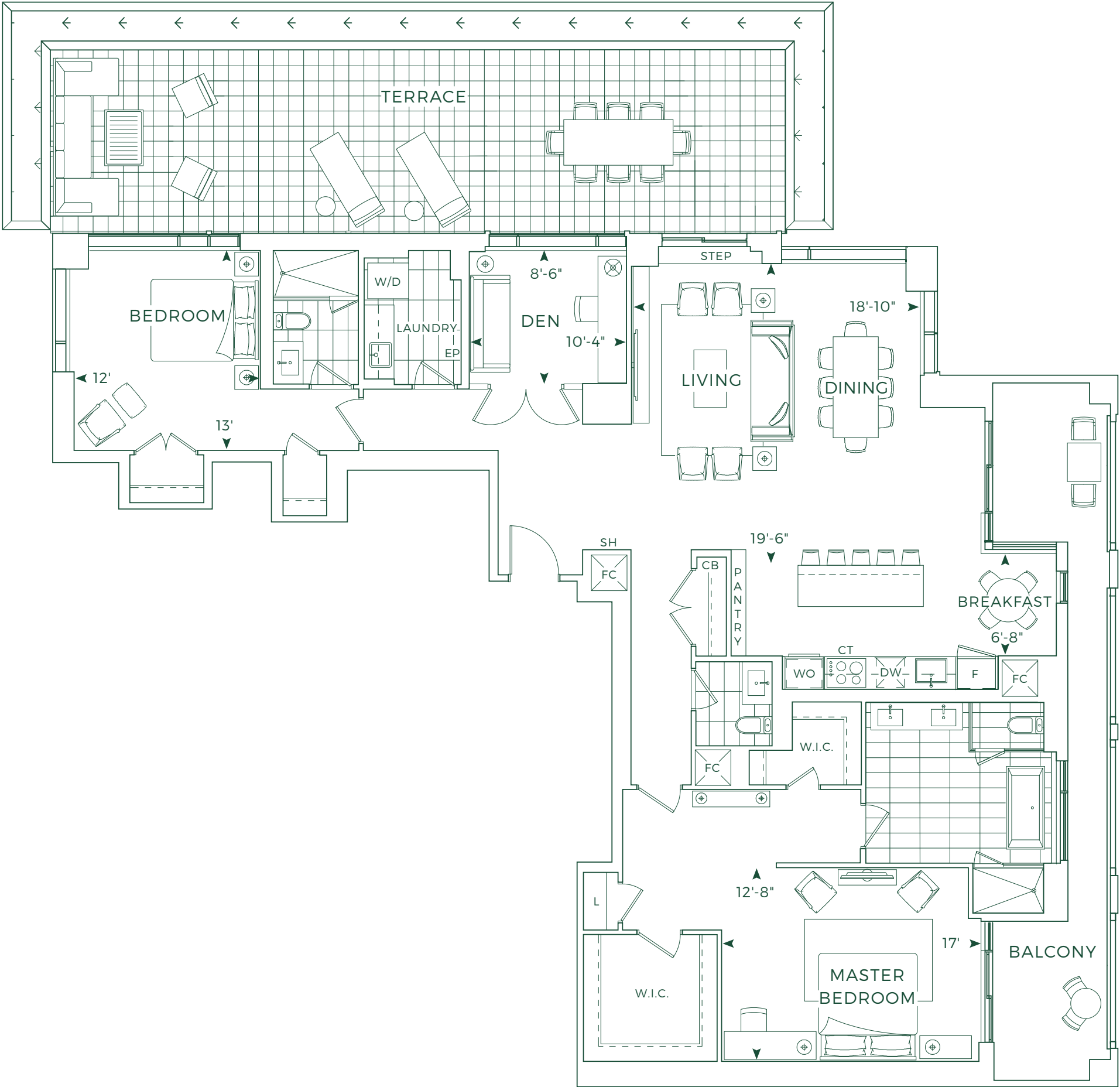
PENTHOUSE 9

2,127 SQ.FT.

2 BEDROOMS + DEN, 2.5 BATHROOMS



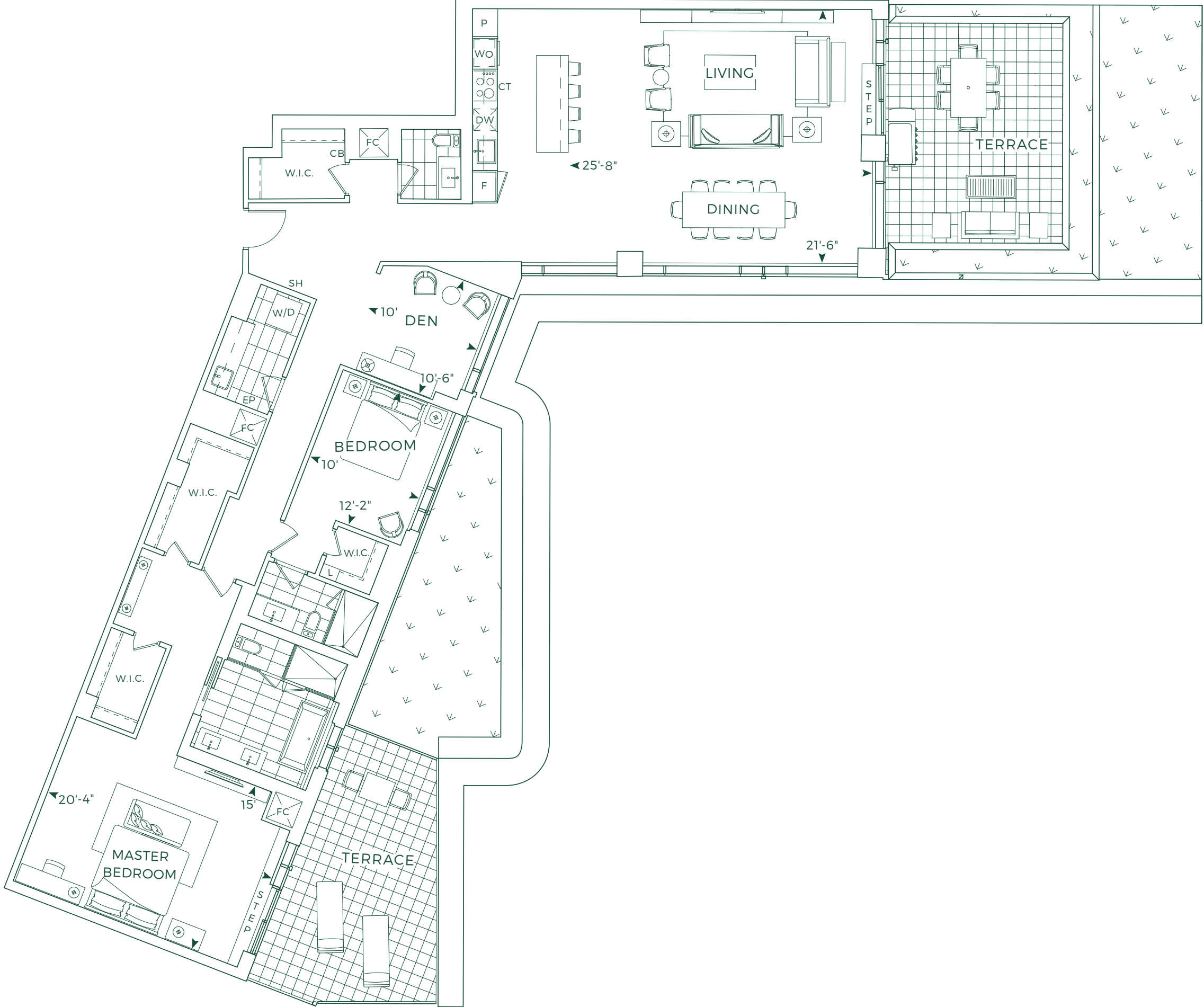
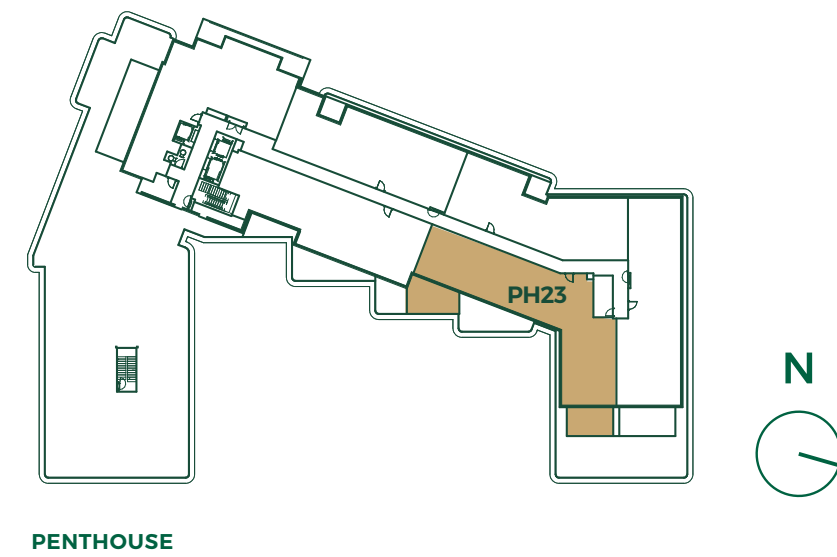
© Tridel 2019. ® Tridel, "D" design, Tridel Built for Life, Tridel Built for Life Design, and Tridel Built Green Built for Life are registered Trademarks of Tridel Corporation. Project names and logos are Trademarks of their respective owners. All rights reserved. Building and view not to scale. All dimensions are approximate and subject to normal construction variances. Dimensions may exceed the usable floor area. Some features and finishes herein are upgrades or are for illustrative purposes only and may not be available. Furniture is displayed for illustrative purposes only and does not necessarily reflect the electrical plan for the suite. Suites are sold unfurnished. Balcony, terrace and facade variations may apply; contact a sales representative for further details. Furniture, BBQs and planter locations on balcony/terraces are for illustration purposes only and subject to change. Illustrations are artist's concept only. Sizes and specifications subject to change without notice. E. & O.E. June 2019.



PENTHOUSE 23

2,379 SQ.FT.

2 BEDROOMS + DEN, 2.5 BATHROOMS



© Tridel 2019. © Tridel, "TD" design, Tridel Built for Life, Tridel Built for Life Design, and Tridel Built Green Built for Life are registered Trademarks of Tridel Corporation. Project names and logos are Trademarks of their respective owners. All rights reserved. Building and view not to scale. All dimensions are approximate and subject to normal construction variances. Dimensions may exceed the usable floor area. Some features and finishes herein are upgrades or are for illustrative purposes only and may not be available. Furniture is displayed for illustrative purposes only and does not necessarily reflect the electrical plan for the suite. Suites are sold unfurnished. Balcony, terrace and facade variations may apply, contact a sales representative for further details. Furniture, BBQs and planter locations on balcony/terraces are for illustration purposes only and subject to change. Illustrations are artist's concept only. Sizes and specifications subject to change without notice. E. & O.E. June 2019.



PENTHOUSE DINING AREA



SIGNATURE SUITE LIVING AREA



**SIGNATURE AND PENTHOUSE
COLLECTION**
Features & Finishes

Rich materials and thoughtful details evoke a sense of timeless elegance in every space within your Edenbridge suite. Luxury appliances provide a chic, innovative counterpoint. Your home makes lavish use of natural materials to create a stunning environment. Natural stone, quartz, and wood grace the interiors, an interplay of the sleekly modern with the treasured traditional.

Throughout your home, engineered hardwood flooring adds to the feeling of a luxurious retreat. In the kitchen, double square edge natural stone or engineered quartz countertops and fully integrated Miele® refrigerator and dishwasher ensure convenience and efficiency as well as beauty. And in your bathroom the glass-enclosed shower or soaker tub help instill a feeling of peace and relaxation.

Spacious walk-in closets, chrome faucets in the kitchen and bathrooms, and contemporary style interior doors with coordinated hardware further convey the impression of utmost comfort and elegance.*

* Signature and Penthouse Collection Finishes do not apply to suite types 2A and 2E+D